



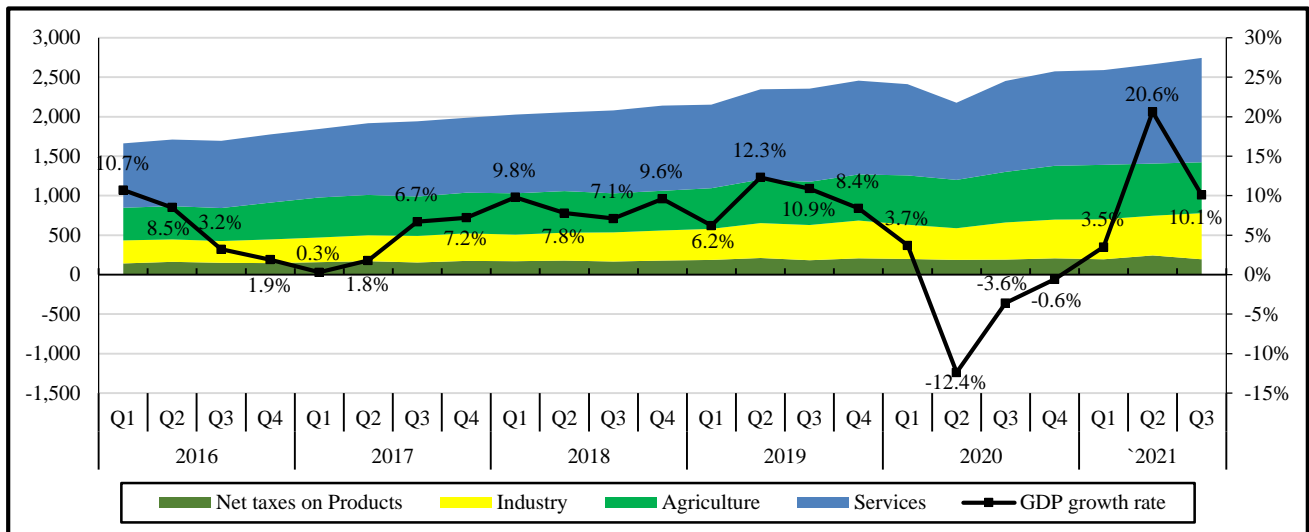
REPUBLIC OF RWANDA

## Gross Domestic Product – 2021 Q3

### 1. Gross Domestic Product and its structure

In the third quarter of 2021, GDP at current market prices was estimated at Frw 2,746 billion, up from Frw 2,453 billion in the same quarter of 2020. Services continue to lead in terms of shares to GDP with 48 percent compared to 23 percent and 21 percent shares for agriculture and industry respectively. The remainder 7 percent was attributed to adjustment for taxes and subsidies on products.

**Figure 1: Gross Domestic Product Structure and growth rate**



### 2. Growth rate by kind of activity

In this quarter, estimates calculated in 2017 prices show that GDP was 10.1 percent higher when compared to the same quarter of 2020.

#### 2.1. Agriculture

Agricultural activities grew by 6 percent and contributed 1.6 percentage points to overall GDP growth. Within agriculture, the production of food crops increased by 6 percent and the production of export crops increased by 2 percent.

#### 2.2. Industry

Industrial activities grew by 12 percent and contributed 2.2 percentage points to GDP growth. The main contributors in the industry sector were construction activities, which grew by 15 percent, and manufacturing activities, which grew by 7 percent. Mining and quarrying activities also increased by 30 percent.

The growth in manufacturing activities is due to an increase of 6 percent in the production of processed food, 32 percent in manufacturing of non-metallic products and 17 percent in production of chemicals, rubber & plastic products. However, the manufacturing of metal products, machinery & equipment decreased by 11 percent after a high increase of 31 percent in the third quarter of 2020.

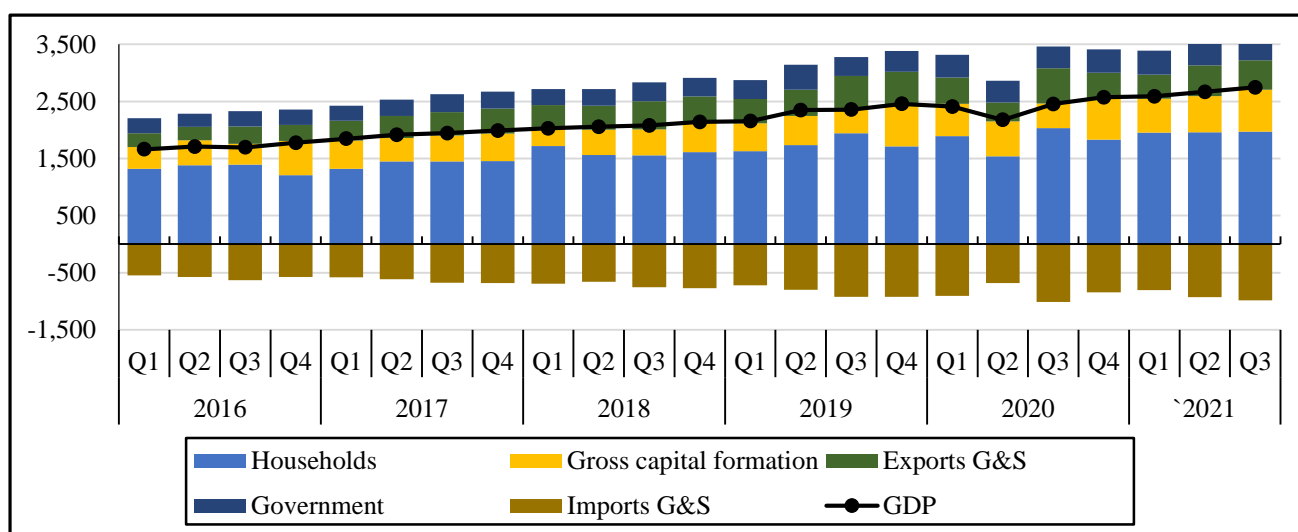
### 2.3. Services

Services activities grew by 11 percent and contributed 5.3 percentage points to GDP growth. Within services sector, wholesale & retail trade increased by 4 percent, transport increased by 19 percent, information & communication increased by 14 percent, financial services increased by 11 percent while education increased by 140 percent when compared to same quarter of 2020 when most of schools and universities were still closed.

## 3. Expenditure GDP

In the third quarter of 2021, total final consumption expenditure increased by 4 percent, with Government final consumption increasing by 28%. However, household final consumption decreased by 1 percent. Gross capital formation increased 54% while Imports and Exports decreased by 8% and 24% respectively.

**Figure 2: Expenditure on GDP (Billion Frw)**



## 4. Reference Tables

**Table A**  
**Macro-economic aggregates**

	2017	2018Q1	2018Q2	2018Q3	2018Q4	2019Q1	2019Q2	2019Q3	2019Q4	2020Q1	2020Q2	2020Q3	2020Q4	2021Q1	2021Q2	2021Q3
<b>Gross Domestic Product (Frw billions)</b>																
<b>GDP at current prices</b>	7,694	2,027	2,057	2,079	2,139	2,153	2,347	2,357	2,458	2,410	2,177	2,453	2,572	2,588	2,666	2,746
<i>Growth rate</i>		9.8%	7.3%	7.0%	7.5%	6.2%	14.1%	13.4%	14.9%	11.9%	-7.2%	4.1%	4.7%	7.4%	22.4%	12.0%
<b>GDP at constant 2017 prices</b>	7,694	2,044	2,053	2,094	2,164	2,170	2,306	2,322	2,347	2,249	2,019	2,238	2,331	2,329	2,435	2,464
<i>Growth rate</i>		9.8%	7.8%	7.1%	9.6%	6.2%	12.3%	10.9%	8.4%	3.7%	-12.4%	-3.6%	-0.6%	3.5%	20.6%	10.1%
<b>Implicit GDP deflator</b>	400	99	100	99	99	99	102	101	105	107	108	110	110	111	109	111
<i>Growth rate</i>	0.0%	0.1%	-0.5%	-0.1%	-1.9%	0.1%	1.6%	2.2%	6.0%	8.0%	6.0%	8.0%	5.4%	3.7%	1.5%	1.7%
<b>GDP per head (in '000 Frw)</b>	657	171	172	173	177	177	192	192	199	194	174	195	203	203	208	213
<b>GDP per head (in current US dollars)</b>	790	201	201	200	202	200	215	212	217	209	186	206	210	208	212	215
<b>Proportions of GDP</b>																
<b>Total final consumption expenditure</b>																
<i>Government</i>	15%	14%	14%	16%	15%	16%	19%	14%	15%	17%	17%	16%	16%	16%	17%	18%
<i>Private</i>	74%	85%	76%	75%	75%	76%	74%	82%	70%	79%	71%	83%	71%	75%	73%	72%
<b>Gross capital formation</b>	24%	16%	21%	22%	25%	23%	22%	18%	30%	23%	28%	18%	28%	23%	24%	27%
<b>Resource balance</b>	-13%	-15%	-12%	-12%	-16%	-14%	-14%	-15%	-14%	-18%	-16%	-16%	-15%	-15%	-15%	-17%
<b>Value added by</b>																
<i>Agriculture</i>	26%	26%	26%	24%	23%	24%	23%	23%	24%	26%	28%	26%	26%	27%	25%	23%
<i>Industry</i>	17%	17%	17%	18%	18%	18%	19%	19%	19%	18%	19%	19%	19%	19%	19%	21%
<i>Services</i>	48%	49%	49%	51%	50%	49%	49%	50%	48%	48%	45%	47%	46%	46%	47%	48%
<i>Adjustments</i>	8%	8%	9%	8%	8%	9%	9%	8%	8%	8%	9%	8%	8%	8%	9%	7%
<b>National income and expenditure (Frw billions)</b>																
<b>Gross Domestic Product at current prices</b>	7,694	2,027	2,057	2,079	2,139	2,153	2,347	2,357	2,458	2,410	2,177	2,453	2,572	2,588	2,666	2,746
Factor income from abroad, net	-242	-73	-81	-73	-73	-83	-80	-80	-70	-75	-47	-47	-55	-50	-53	-63
<b>Gross National Income</b>	7,452	1,954	1,976	2,006	2,066	2,071	2,266	2,277	2,388	2,336	2,130	2,406	2,517	2,538	2,613	2,684
Current transfers, net	496	130	124	155	166	136	102	129	160	129	137	157	160	176	196	173
<b>Gross National Disposable Income</b>	7,948	2,084	2,100	2,162	2,232	2,207	2,368	2,405	2,548	2,465	2,268	2,563	2,677	2,715	2,808	2,857
Less Final consumption expenditure	-6,831	-1,999	-1,855	-1,880	-1,936	-1,961	-2,175	-2,278	-2,074	-2,292	-1,921	-2,413	-2,242	-2,375	-2,423	-2,478
<b>Gross National Saving</b>	1,117	85	245	282	296	246	193	127	474	172	347	150	435	340	385	379
Less Gross capital formation	-1,834	-325	-440	-458	-534	-488	-511	-433	-729	-563	-608	-435	-726	-596	-634	-732
<b>Net lending to the rest of the world</b>	-717	-240	-195	-177	-238	-242	-318	-305	-255	-390	-261	-285	-291	-256	-249	-353
<b>Memorandum items</b>																
Total population (millions)		11.9	11.9	12.0	12.1	12.2	12.2	12.3	12.4	12.4	12.5	12.6	12.7	12.7	12.8	12.9
<i>Growth rate</i>		2.4%	2.4%	2.4%	2.4%	2.4%	2.4%	2.4%	2.4%	2.4%	2.3%	2.3%	2.3%	2.3%	2.3%	2.3%
Exchange rate: Frw per US dollar		849	856	864	875	884	893	904	916	927	933	947	966	976	983	992
<i>Growth rate</i>		3.2%	3.4%	3.7%	3.9%	4.2%	4.3%	4.6%	4.7%	4.9%	4.4%	4.7%	5.4%	5.3%	5.4%	4.8%

Source: National Institute of Statistics of Rwanda

December 16, 2021

**Table 1**  
**Gross Domestic Product by Kind of Activity**  
**at current prices**  
*(in billion Frw)*

Activity description	ISIC4	2017	2018 Q1	2018 Q2	2018 Q3	2018 Q4	2019 Q1	2019 Q2	2019 Q3	2019 Q4	2020 Q1	2020 Q2	2020 Q3	2020 Q4	2021 Q1	2021 Q2	2021 Q3
<b>GROSS DOMESTIC PRODUCT (GDP)</b>		<b>7,694</b>	<b>2,027</b>	<b>2,057</b>	<b>2,079</b>	<b>2,139</b>	<b>2,153</b>	<b>2,347</b>	<b>2,357</b>	<b>2,458</b>	<b>2,410</b>	<b>2,177</b>	<b>2,453</b>	<b>2,572</b>	<b>2,588</b>	<b>2,666</b>	<b>2,746</b>
<b>AGRICULTURE, FORESTRY &amp; FISHING</b>	<b>A</b>	<b>2,027</b>	<b>524</b>	<b>527</b>	<b>493</b>	<b>500</b>	<b>514</b>	<b>549</b>	<b>547</b>	<b>583</b>	<b>624</b>	<b>612</b>	<b>641</b>	<b>682</b>	<b>690</b>	<b>663</b>	<b>643</b>
Food crops	AA	1,297	320	315	263	259	292	321	300	332	373	363	366	410	411	376	336
Export crops	AB	138	31	26	37	44	24	22	34	34	27	23	37	39	28	24	41
Livestock & livestock products	AC	186	50	52	54	56	58	61	66	69	71	77	81	84	83	90	92
Forestry	AD	378	114	126	131	133	132	136	138	139	145	144	150	138	158	163	163
Fishing	AE	29	9	8	8	8	8	8	9	9	9	5	8	10	9	10	11
<b>INDUSTRY</b>	<b>B-F</b>	<b>1,330</b>	<b>335</b>	<b>351</b>	<b>371</b>	<b>382</b>	<b>394</b>	<b>442</b>	<b>447</b>	<b>476</b>	<b>434</b>	<b>403</b>	<b>469</b>	<b>490</b>	<b>505</b>	<b>501</b>	<b>587</b>
Mining & quarrying	B	165	32	46	56	51	46	38	30	21	31	24	33	33	43	63	89
<b>TOTAL MANUFACTURING</b>	<b>C</b>	<b>591</b>	<b>157</b>	<b>161</b>	<b>155</b>	<b>159</b>	<b>167</b>	<b>196</b>	<b>200</b>	<b>217</b>	<b>200</b>	<b>199</b>	<b>224</b>	<b>223</b>	<b>242</b>	<b>244</b>	<b>253</b>
<i>Of which: Food</i>	<i>CA</i>	<i>210</i>	<i>52</i>	<i>52</i>	<i>36</i>	<i>45</i>	<i>51</i>	<i>65</i>	<i>63</i>	<i>78</i>	<i>70</i>	<i>83</i>	<i>69</i>	<i>68</i>	<i>91</i>	<i>81</i>	<i>77</i>
<i>Beverages &amp; tobacco</i>	<i>CB</i>	<i>159</i>	<i>42</i>	<i>43</i>	<i>46</i>	<i>44</i>	<i>43</i>	<i>49</i>	<i>48</i>	<i>50</i>	<i>51</i>	<i>46</i>	<i>53</i>	<i>53</i>	<i>57</i>	<i>57</i>	<i>62</i>
<i>Textiles, clothing &amp; leather goods</i>	<i>CC</i>	<i>34</i>	<i>14</i>	<i>15</i>	<i>15</i>	<i>15</i>	<i>16</i>	<i>17</i>	<i>19</i>	<i>20</i>	<i>18</i>	<i>18</i>	<i>22</i>	<i>23</i>	<i>22</i>	<i>25</i>	<i>23</i>
<i>Wood &amp; paper; printing</i>	<i>CD</i>	<i>26</i>	<i>7</i>	<i>6</i>	<i>7</i>	<i>8</i>	<i>8</i>	<i>9</i>	<i>8</i>	<i>8</i>	<i>7</i>	<i>7</i>	<i>8</i>	<i>10</i>	<i>9</i>	<i>10</i>	<i>10</i>
<i>Chemicals, rubber &amp; plastic products</i>	<i>CE</i>	<i>34</i>	<i>9</i>	<i>9</i>	<i>10</i>	<i>9</i>	<i>11</i>	<i>12</i>	<i>16</i>	<i>17</i>	<i>15</i>	<i>16</i>	<i>20</i>	<i>17</i>	<i>18</i>	<i>25</i>	<i>22</i>
<i>Non-metallic mineral products</i>	<i>CF</i>	<i>34</i>	<i>8</i>	<i>6</i>	<i>10</i>	<i>10</i>	<i>9</i>	<i>10</i>	<i>13</i>	<i>12</i>	<i>11</i>	<i>9</i>	<i>13</i>	<i>13</i>	<i>10</i>	<i>8</i>	<i>18</i>
<i>Metal products, machinery &amp; equipment</i>	<i>CG</i>	<i>32</i>	<i>8</i>	<i>11</i>	<i>11</i>	<i>9</i>	<i>10</i>	<i>14</i>	<i>12</i>	<i>11</i>	<i>9</i>	<i>9</i>	<i>16</i>	<i>16</i>	<i>12</i>	<i>14</i>	<i>15</i>
<i>Furniture &amp; other manufacturing</i>	<i>CH</i>	<i>61</i>	<i>17</i>	<i>18</i>	<i>19</i>	<i>19</i>	<i>20</i>	<i>20</i>	<i>20</i>	<i>21</i>	<i>20</i>	<i>12</i>	<i>23</i>	<i>23</i>	<i>24</i>	<i>25</i>	<i>25</i>
Electricity	D	84	21	22	23	22	21	23	23	23	22	21	23	25	22	24	24
Water & waste management	E	32	8	8	8	8	12	14	14	14	14	14	15	15	15	15	16
Construction	F	458	116	115	129	142	147	170	180	200	167	144	174	195	181	155	206
<b>SERVICES</b>	<b>G-T</b>	<b>3,684</b>	<b>998</b>	<b>999</b>	<b>1,050</b>	<b>1,079</b>	<b>1,060</b>	<b>1,144</b>	<b>1,180</b>	<b>1,190</b>	<b>1,155</b>	<b>977</b>	<b>1,151</b>	<b>1,194</b>	<b>1,200</b>	<b>1,258</b>	<b>1,323</b>
<b>TRADE &amp; TRANSPORT</b>	<b>G-H</b>	<b>992</b>	<b>287</b>	<b>283</b>	<b>318</b>	<b>331</b>	<b>317</b>	<b>331</b>	<b>383</b>	<b>380</b>	<b>362</b>	<b>271</b>	<b>372</b>	<b>392</b>	<b>383</b>	<b>400</b>	<b>434</b>
Maintenance & repair of motor vehicles	GA	40	10	11	11	12	12	12	13	13	13	9	19	16	16	17	17
Wholesale & retail trade	GB	597	172	165	181	188	179	196	210	203	207	165	214	209	218	238	273
Transport	HA	355	104	107	126	131	126	122	160	163	142	97	140	167	149	144	144
<b>OTHER SERVICES</b>	<b>I-T</b>	<b>2,692</b>	<b>711</b>	<b>716</b>	<b>732</b>	<b>748</b>	<b>743</b>	<b>814</b>	<b>798</b>	<b>810</b>	<b>793</b>	<b>705</b>	<b>780</b>	<b>802</b>	<b>817</b>	<b>858</b>	<b>889</b>
Hotels & restaurants	I	140	37	37	41	43	42	41	44	45	37	14	18	23	23	18	29
Information & communication	J	134	38	37	34	35	40	48	48	50	36	46	56	57	41	59	55
Financial services	K	191	50	48	55	52	53	58	52	62	57	52	63	48	63	68	66
Real estate activities	L	560	150	149	156	153	159	181	159	150	157	148	163	176	164	165	174
Professional, scientific & technical activities	M	163	43	45	45	47	48	51	49	56	52	53	55	59	58	64	61
Administrative & support service activities	N	277	71	72	75	73	73	75	81	84	80	76	80	78	78	84	85
Public administration & defense; compulsory social security	O	446	119	116	125	128	118	128	143	134	141	130	152	140	141	142	157
Education	P	231	58	61	59	61	61	67	63	67	67	23	27	49	79	68	89
Human health & social work activities	Q	160	40	43	34	38	37	45	38	37	51	47	40	46	43	57	40
Cultural, domestic & other services	R-T	391	105	107	108	117	113	119	120	126	115	117	124	126	126	133	133
<b>Taxes less subsidies on products</b>		<b>654</b>	<b>170</b>	<b>179</b>	<b>165</b>	<b>178</b>	<b>186</b>	<b>212</b>	<b>183</b>	<b>208</b>	<b>197</b>	<b>186</b>	<b>191</b>	<b>207</b>	<b>194</b>	<b>243</b>	<b>193</b>

Source: National Institute of Statistics of Rwanda  
December 16, 2021

**Table 1A**  
**Gross Domestic Product by Kind of Activity**  
**Shares at current prices**  
*(Percentages)*

Activity description	ISIC4	2017	2018 Q1	2018 Q2	2018 Q3	2018 Q4	2019 Q1	2019 Q2	2019 Q3	2019 Q4	2020 Q1	2020 Q2	2020 Q3	2020 Q4	2021 Q1	2021 Q2	2021 Q3
<b>GROSS DOMESTIC PRODUCT (GDP)</b>		<b>100%</b>	<b>100%</b>	<b>100%</b>	<b>100%</b>	<b>100%</b>	<b>100%</b>	<b>100%</b>	<b>100%</b>	<b>100%</b>	<b>100%</b>	<b>100%</b>	<b>100%</b>	<b>100%</b>	<b>100%</b>	<b>100%</b>	<b>100%</b>
<b>AGRICULTURE, FORESTRY &amp; FISHING</b>	<b>A</b>	<b>26%</b>	<b>26%</b>	<b>26%</b>	<b>24%</b>	<b>23%</b>	<b>24%</b>	<b>23%</b>	<b>23%</b>	<b>24%</b>	<b>26%</b>	<b>28%</b>	<b>26%</b>	<b>27%</b>	<b>27%</b>	<b>25%</b>	<b>23%</b>
Food crops	AA	17%	16%	15%	13%	12%	14%	14%	13%	14%	16%	17%	15%	16%	16%	14%	12%
Export crops	AB	2%	2%	1%	2%	2%	1%	1%	2%	1%	1%	1%	2%	2%	1%	1%	2%
Livestock & livestock products	AC	2%	3%	3%	3%	3%	3%	3%	3%	3%	3%	4%	3%	3%	3%	3%	3%
Forestry	AD	5%	6%	6%	6%	6%	6%	6%	6%	6%	6%	7%	6%	5%	6%	6%	6%
Fishing	AE	0%	0%	0%	0%	0%	0%	0%	0%	0%	0%	0%	0%	0%	0%	0%	0%
<b>INDUSTRY</b>	<b>B-F</b>	<b>17%</b>	<b>17%</b>	<b>17%</b>	<b>18%</b>	<b>18%</b>	<b>18%</b>	<b>19%</b>	<b>19%</b>	<b>19%</b>	<b>18%</b>	<b>19%</b>	<b>19%</b>	<b>19%</b>	<b>20%</b>	<b>19%</b>	<b>21%</b>
Mining & quarrying	B	2%	2%	2%	3%	2%	2%	2%	1%	1%	1%	1%	1%	1%	2%	2%	3%
<b>TOTAL MANUFACTURING</b>	<b>C</b>	<b>8%</b>	<b>8%</b>	<b>8%</b>	<b>8%</b>	<b>7%</b>	<b>8%</b>	<b>8%</b>	<b>9%</b>	<b>9%</b>	<b>8%</b>	<b>9%</b>	<b>9%</b>	<b>9%</b>	<b>9%</b>	<b>9%</b>	<b>9%</b>
<i>Of which: Food</i>	<i>CA</i>	<i>3%</i>	<i>3%</i>	<i>3%</i>	<i>2%</i>	<i>2%</i>	<i>2%</i>	<i>3%</i>	<i>3%</i>	<i>3%</i>	<i>3%</i>	<i>4%</i>	<i>3%</i>	<i>3%</i>	<i>4%</i>	<i>3%</i>	<i>3%</i>
<i>Beverages &amp; tobacco</i>	<i>CB</i>	<i>2%</i>	<i>2%</i>	<i>2%</i>	<i>2%</i>	<i>2%</i>	<i>2%</i>	<i>2%</i>	<i>2%</i>	<i>2%</i>	<i>2%</i>	<i>2%</i>	<i>2%</i>	<i>2%</i>	<i>2%</i>	<i>2%</i>	<i>2%</i>
<i>Textiles, clothing &amp; leather goods</i>	<i>CC</i>	<i>0%</i>	<i>1%</i>	<i>1%</i>	<i>1%</i>	<i>1%</i>	<i>1%</i>	<i>1%</i>	<i>1%</i>	<i>1%</i>	<i>1%</i>	<i>1%</i>	<i>1%</i>	<i>1%</i>	<i>1%</i>	<i>1%</i>	<i>1%</i>
<i>Wood &amp; paper; printing</i>	<i>CD</i>	<i>0%</i>	<i>0%</i>	<i>0%</i>	<i>0%</i>	<i>0%</i>	<i>0%</i>	<i>0%</i>	<i>0%</i>	<i>0%</i>	<i>0%</i>	<i>0%</i>	<i>0%</i>	<i>0%</i>	<i>0%</i>	<i>0%</i>	<i>0%</i>
<i>Chemicals, rubber &amp; plastic products</i>	<i>CE</i>	<i>0%</i>	<i>1%</i>	<i>1%</i>	<i>1%</i>	<i>0%</i>	<i>1%</i>	<i>1%</i>	<i>1%</i>	<i>1%</i>	<i>1%</i>	<i>1%</i>	<i>1%</i>	<i>1%</i>	<i>1%</i>	<i>1%</i>	<i>1%</i>
<i>Non-metallic mineral products</i>	<i>CF</i>	<i>0%</i>	<i>0%</i>	<i>0%</i>	<i>1%</i>	<i>1%</i>	<i>0%</i>	<i>0%</i>	<i>1%</i>	<i>1%</i>	<i>0%</i>	<i>0%</i>	<i>1%</i>	<i>1%</i>	<i>0%</i>	<i>0%</i>	<i>1%</i>
<i>Metal products, machinery &amp; equipment</i>	<i>CG</i>	<i>0%</i>	<i>0%</i>	<i>1%</i>	<i>1%</i>	<i>0%</i>	<i>1%</i>	<i>1%</i>	<i>1%</i>	<i>1%</i>	<i>0%</i>	<i>0%</i>	<i>1%</i>	<i>1%</i>	<i>1%</i>	<i>1%</i>	<i>1%</i>
<i>Furniture &amp; other manufacturing</i>	<i>CH</i>	<i>1%</i>	<i>1%</i>	<i>1%</i>	<i>1%</i>	<i>1%</i>	<i>1%</i>	<i>1%</i>	<i>1%</i>	<i>1%</i>	<i>1%</i>	<i>1%</i>	<i>1%</i>	<i>1%</i>	<i>1%</i>	<i>1%</i>	<i>1%</i>
Electricity	D	1%	1%	1%	1%	1%	1%	1%	1%	1%	1%	1%	1%	1%	1%	1%	1%
Water & waste management	E	0%	0%	0%	0%	0%	1%	1%	1%	1%	1%	1%	1%	1%	1%	1%	1%
Construction	F	6%	6%	6%	6%	7%	7%	7%	8%	8%	7%	7%	7%	8%	7%	6%	8%
<b>SERVICES</b>	<b>G-T</b>	<b>48%</b>	<b>49%</b>	<b>49%</b>	<b>51%</b>	<b>50%</b>	<b>49%</b>	<b>49%</b>	<b>50%</b>	<b>48%</b>	<b>48%</b>	<b>45%</b>	<b>47%</b>	<b>46%</b>	<b>46%</b>	<b>47%</b>	<b>48%</b>
<b>TRADE &amp; TRANSPORT</b>	<b>G-H</b>	<b>13%</b>	<b>14%</b>	<b>14%</b>	<b>15%</b>	<b>16%</b>	<b>15%</b>	<b>14%</b>	<b>16%</b>	<b>15%</b>	<b>13%</b>	<b>15%</b>	<b>15%</b>	<b>15%</b>	<b>15%</b>	<b>15%</b>	<b>16%</b>
Maintenance & repair of motor vehicles	GA	1%	1%	1%	1%	1%	1%	1%	1%	1%	0%	1%	1%	1%	1%	1%	1%
Wholesale & retail trade	GB	8%	9%	8%	9%	9%	8%	8%	9%	8%	9%	8%	9%	8%	8%	9%	10%
Transport	HA	5%	5%	5%	6%	6%	6%	5%	7%	7%	6%	5%	6%	7%	6%	5%	5%
<b>OTHER SERVICES</b>	<b>I-T</b>	<b>35%</b>	<b>35%</b>	<b>35%</b>	<b>35%</b>	<b>35%</b>	<b>35%</b>	<b>35%</b>	<b>34%</b>	<b>33%</b>	<b>33%</b>	<b>32%</b>	<b>32%</b>	<b>31%</b>	<b>32%</b>	<b>32%</b>	<b>32%</b>
Hotels & restaurants	I	2%	2%	2%	2%	2%	2%	2%	2%	2%	2%	1%	1%	1%	1%	1%	1%
Information & communication	J	2%	2%	2%	2%	2%	2%	2%	2%	2%	2%	2%	2%	2%	2%	2%	2%
Financial services	K	3%	3%	2%	3%	2%	3%	3%	2%	3%	2%	2%	3%	2%	2%	3%	2%
Real estate activities	L	7%	7%	7%	8%	7%	7%	8%	7%	6%	7%	7%	7%	7%	6%	6%	6%
Professional, scientific & technical activities	M	2%	2%	2%	2%	2%	2%	2%	2%	2%	2%	2%	2%	2%	2%	2%	2%
Administrative & support service activities	N	4%	4%	4%	4%	3%	3%	3%	3%	3%	3%	4%	3%	3%	3%	3%	3%
Public administration & defense; compulsory social security	O	6%	6%	6%	6%	6%	6%	6%	6%	6%	6%	6%	6%	5%	5%	5%	6%
Education	P	3%	3%	3%	3%	3%	3%	3%	3%	3%	3%	1%	1%	2%	3%	3%	3%
Human health & social work activities	Q	2%	2%	2%	2%	2%	2%	2%	2%	2%	2%	2%	2%	2%	2%	2%	2%
Cultural, domestic & other services	R-T	5%	5%	5%	5%	6%	5%	5%	5%	5%	5%	5%	5%	5%	5%	5%	5%
<b>Taxes less subsidies on products</b>	<b>0</b>	<b>9%</b>	<b>8%</b>	<b>9%</b>	<b>8%</b>	<b>8%</b>	<b>9%</b>	<b>9%</b>	<b>8%</b>	<b>9%</b>	<b>8%</b>	<b>9%</b>	<b>8%</b>	<b>8%</b>	<b>8%</b>	<b>9%</b>	<b>7%</b>

Source: National Institute of Statistics of Rwanda  
December 16, 2021

**Table 2**  
**Gross Domestic Product by Kind of Activity**  
**At constant 2017 prices**  
*(in billion Frw)*

Activity description	ISIC4	2017	2018 Q1	2018 Q2	2018 Q3	2018 Q4	2019 Q1	2019 Q2	2019 Q3	2019 Q4	2020 Q1	2020 Q2	2020 Q3	2020 Q4	2021 Q1	2021 Q2	2021 Q3
<b>GROSS DOMESTIC PRODUCT (GDP)</b>		<b>7,694</b>	<b>2,044</b>	<b>2,053</b>	<b>2,094</b>	<b>2,164</b>	<b>2,170</b>	<b>2,306</b>	<b>2,322</b>	<b>2,347</b>	<b>2,249</b>	<b>2,019</b>	<b>2,238</b>	<b>2,331</b>	<b>2,329</b>	<b>2,435</b>	<b>2,464</b>
<b>AGRICULTURE, FORESTRY &amp; FISHING</b>	<b>A</b>	<b>2,027</b>	<b>546</b>	<b>543</b>	<b>526</b>	<b>537</b>	<b>568</b>	<b>570</b>	<b>561</b>	<b>561</b>	<b>565</b>	<b>561</b>	<b>573</b>	<b>579</b>	<b>603</b>	<b>602</b>	<b>609</b>
Food crops	AA	1,297	359	359	328	328	372	372	342	342	365	365	351	351	391	391	374
Export crops	AB	138	34	28	39	47	32	30	48	45	27	25	44	45	28	24	45
Livestock & livestock products	AC	186	49	51	52	54	55	56	58	59	59	61	63	65	65	66	68
Forestry	AD	378	97	98	99	101	102	104	105	106	106	107	109	111	112	113	115
Fishing	AE	29	7	8	8	8	8	8	8	8	8	4	6	8	8	8	8
<b>INDUSTRY</b>	<b>B-F</b>	<b>1,330</b>	<b>337</b>	<b>352</b>	<b>369</b>	<b>387</b>	<b>387</b>	<b>428</b>	<b>429</b>	<b>443</b>	<b>395</b>	<b>347</b>	<b>422</b>	<b>451</b>	<b>433</b>	<b>451</b>	<b>472</b>
Mining & quarrying	B	165	35	40	46	49	41	46	40	43	30	22	30	35	31	41	39
<b>TOTAL MANUFACTURING</b>	<b>C</b>	<b>591</b>	<b>162</b>	<b>170</b>	<b>166</b>	<b>173</b>	<b>173</b>	<b>196</b>	<b>188</b>	<b>189</b>	<b>183</b>	<b>172</b>	<b>200</b>	<b>207</b>	<b>198</b>	<b>211</b>	<b>214</b>
<i>Of which: Food</i>	<i>CA</i>	<i>210</i>	<i>62</i>	<i>65</i>	<i>51</i>	<i>60</i>	<i>61</i>	<i>68</i>	<i>58</i>	<i>61</i>	<i>68</i>	<i>68</i>	<i>63</i>	<i>67</i>	<i>73</i>	<i>75</i>	<i>66</i>
<i>Beverages &amp; tobacco</i>	<i>CB</i>	<i>159</i>	<i>39</i>	<i>40</i>	<i>45</i>	<i>42</i>	<i>42</i>	<i>47</i>	<i>48</i>	<i>46</i>	<i>44</i>	<i>41</i>	<i>50</i>	<i>50</i>	<i>46</i>	<i>45</i>	<i>52</i>
<i>Textiles, clothing &amp; leather goods</i>	<i>CC</i>	<i>34</i>	<i>12</i>	<i>13</i>	<i>14</i>	<i>14</i>	<i>13</i>	<i>15</i>	<i>17</i>	<i>19</i>	<i>15</i>	<i>13</i>	<i>16</i>	<i>17</i>	<i>15</i>	<i>18</i>	<i>18</i>
<i>Wood &amp; paper; printing</i>	<i>CD</i>	<i>26</i>	<i>7</i>	<i>7</i>	<i>7</i>	<i>8</i>	<i>9</i>	<i>10</i>	<i>9</i>	<i>9</i>	<i>8</i>	<i>7</i>	<i>9</i>	<i>10</i>	<i>9</i>	<i>10</i>	<i>11</i>
<i>Chemicals, rubber &amp; plastic products</i>	<i>CE</i>	<i>34</i>	<i>9</i>	<i>10</i>	<i>10</i>	<i>11</i>	<i>11</i>	<i>14</i>	<i>13</i>	<i>14</i>	<i>12</i>	<i>13</i>	<i>13</i>	<i>16</i>	<i>14</i>	<i>18</i>	<i>15</i>
<i>Non-metallic mineral products</i>	<i>CF</i>	<i>34</i>	<i>8</i>	<i>7</i>	<i>11</i>	<i>11</i>	<i>10</i>	<i>11</i>	<i>12</i>	<i>11</i>	<i>10</i>	<i>10</i>	<i>13</i>	<i>12</i>	<i>9</i>	<i>10</i>	<i>17</i>
<i>Metal products, machinery &amp; equipment</i>	<i>CG</i>	<i>32</i>	<i>8</i>	<i>11</i>	<i>11</i>	<i>9</i>	<i>10</i>	<i>14</i>	<i>12</i>	<i>12</i>	<i>10</i>	<i>10</i>	<i>16</i>	<i>16</i>	<i>12</i>	<i>14</i>	<i>14</i>
<i>Furniture &amp; other manufacturing</i>	<i>CH</i>	<i>61</i>	<i>17</i>	<i>17</i>	<i>17</i>	<i>17</i>	<i>17</i>	<i>17</i>	<i>17</i>	<i>18</i>	<i>17</i>	<i>10</i>	<i>20</i>	<i>20</i>	<i>20</i>	<i>21</i>	<i>21</i>
Electricity	D	84	22	22	24	24	24	24	25	25	24	23	26	27	25	28	29
Water & waste management	E	32	8	8	8	8	8	8	8	8	8	8	9	9	9	9	9
Construction	F	458	110	112	125	134	141	153	167	178	149	122	157	173	170	162	181
<b>SERVICES</b>	<b>G-T</b>	<b>3,684</b>	<b>986</b>	<b>984</b>	<b>1,023</b>	<b>1,050</b>	<b>1,025</b>	<b>1,092</b>	<b>1,129</b>	<b>1,131</b>	<b>1,083</b>	<b>914</b>	<b>1,045</b>	<b>1,093</b>	<b>1,079</b>	<b>1,133</b>	<b>1,164</b>
<b>TRADE &amp; TRANSPORT</b>	<b>G-H</b>	<b>992</b>	<b>284</b>	<b>277</b>	<b>299</b>	<b>312</b>	<b>301</b>	<b>329</b>	<b>357</b>	<b>352</b>	<b>322</b>	<b>233</b>	<b>315</b>	<b>327</b>	<b>310</b>	<b>328</b>	<b>343</b>
Maintenance & repair of motor vehicles	GA	40	10	11	11	11	11	11	12	12	11	6	13	14	14	15	15
Wholesale & retail trade	GB	597	175	166	176	189	183	205	214	215	203	161	214	211	202	215	222
Transport	HA	355	99	101	112	112	107	112	132	126	108	66	89	102	93	98	106
<b>OTHER SERVICES</b>	<b>I-T</b>	<b>2,692</b>	<b>702</b>	<b>706</b>	<b>724</b>	<b>738</b>	<b>724</b>	<b>764</b>	<b>772</b>	<b>778</b>	<b>761</b>	<b>681</b>	<b>730</b>	<b>766</b>	<b>770</b>	<b>805</b>	<b>821</b>
Hotels & restaurants	I	140	36	37	38	39	39	40	43	44	40	15	19	24	26	20	31
Information & communication	J	134	34	37	41	40	35	41	41	51	47	54	58	56	55	70	67
Financial services	K	191	52	52	54	52	55	57	56	59	52	52	55	63	58	62	61
Real estate activities	L	560	145	145	149	148	151	159	151	148	151	147	154	159	155	157	161
Professional, scientific & technical activities	M	163	43	44	45	47	48	50	48	52	47	47	49	52	52	56	54
Administrative & support service activities	N	277	71	71	74	73	73	73	78	78	73	68	70	70	70	75	76
Public administration & defense; compulsory social security	O	446	117	113	122	125	113	123	137	127	130	119	138	128	128	129	139
Education	P	231	60	60	60	60	61	61	61	61	59	20	26	47	63	55	63
Human health & social work activities	Q	160	41	44	36	39	39	46	41	39	52	48	43	48	45	59	45
Cultural, domestic & other services	R-T	391	102	104	106	114	111	114	117	120	110	110	118	118	117	124	125
<b>Taxes less subsidies on products</b>		<b>654</b>	<b>175</b>	<b>174</b>	<b>176</b>	<b>190</b>	<b>189</b>	<b>216</b>	<b>205</b>	<b>213</b>	<b>207</b>	<b>197</b>	<b>197</b>	<b>209</b>	<b>213</b>	<b>249</b>	<b>219</b>

Source: National Institute of Statistics of Rwanda  
December 16, 2021

**Table 2A**  
**Gross Domestic Product by Kind of Activity**  
**Growth rates at constant 2017 prices**  
*(Percentage change from the previous year)*

Activity description	ISIC4	2018 Q1	2018 Q2	2018 Q3	2018 Q4	2019 Q1	2019 Q2	2019 Q3	2019 Q4	2020 Q1	2020 Q2	2020 Q3	2020 Q4	2021 Q1	2021 Q2	2021 Q3
<b>GROSS DOMESTIC PRODUCT (GDP)</b>		<b>9.8%</b>	<b>7.8%</b>	<b>7.1%</b>	<b>9.6%</b>	<b>6.2%</b>	<b>12.3%</b>	<b>10.9%</b>	<b>8.4%</b>	<b>3.7%</b>	<b>-12.4%</b>	<b>-3.6%</b>	<b>-0.6%</b>	<b>3.5%</b>	<b>20.6%</b>	<b>10.1%</b>
<b>AGRICULTURE, FORESTRY &amp; FISHING</b>	<b>A</b>	<b>9%</b>	<b>7%</b>	<b>5%</b>	<b>4%</b>	<b>4%</b>	<b>5%</b>	<b>7%</b>	<b>4%</b>	<b>-1%</b>	<b>-2%</b>	<b>2%</b>	<b>3%</b>	<b>7%</b>	<b>7%</b>	<b>6%</b>
Food crops	AA	8%	8%	4%	4%	4%	4%	4%	4%	-2%	-2%	3%	3%	7%	7%	6%
Export crops	AB	40%	-1%	4%	-3%	-7%	8%	23%	-4%	-16%	-19%	-8%	0%	7%	-2%	2%
Livestock & livestock products	AC	10%	11%	11%	11%	12%	11%	11%	11%	8%	8%	8%	9%	9%	9%	8%
Forestry	AD	4%	4%	4%	5%	5%	6%	6%	5%	4%	3%	4%	4%	5%	6%	5%
Fishing	AE	8%	6%	5%	2%	2%	3%	4%	5%	5%	-48%	-20%	1%	1%	103%	30%
<b>INDUSTRY</b>	<b>B-F</b>	<b>4%</b>	<b>8%</b>	<b>10%</b>	<b>12%</b>	<b>15%</b>	<b>21%</b>	<b>16%</b>	<b>14%</b>	<b>2%</b>	<b>-19%</b>	<b>-1%</b>	<b>2%</b>	<b>10%</b>	<b>30%</b>	<b>12%</b>
Mining & quarrying	B	-3%	8%	6%	2%	16%	15%	-13%	-12%	-26%	-53%	-24%	-19%	3%	87%	30%
<b>TOTAL MANUFACTURING</b>	<b>C</b>	<b>12%</b>	<b>14%</b>	<b>14%</b>	<b>15%</b>	<b>7%</b>	<b>16%</b>	<b>13%</b>	<b>9%</b>	<b>6%</b>	<b>-13%</b>	<b>6%</b>	<b>10%</b>	<b>8%</b>	<b>23%</b>	<b>7%</b>
<i>Of which: Food</i>	<i>CA</i>	<i>17%</i>	<i>24%</i>	<i>1%</i>	<i>9%</i>	<i>-1%</i>	<i>4%</i>	<i>15%</i>	<i>2%</i>	<i>11%</i>	<i>0%</i>	<i>8%</i>	<i>10%</i>	<i>7%</i>	<i>11%</i>	<i>6%</i>
<i>Beverages &amp; tobacco</i>	<i>CB</i>	<i>-7%</i>	<i>-2%</i>	<i>13%</i>	<i>13%</i>	<i>8%</i>	<i>19%</i>	<i>8%</i>	<i>9%</i>	<i>6%</i>	<i>-13%</i>	<i>4%</i>	<i>8%</i>	<i>4%</i>	<i>9%</i>	<i>3%</i>
<i>Textiles, clothing &amp; leather goods</i>	<i>CC</i>	<i>56%</i>	<i>42%</i>	<i>68%</i>	<i>74%</i>	<i>9%</i>	<i>12%</i>	<i>21%</i>	<i>30%</i>	<i>11%</i>	<i>-13%</i>	<i>-5%</i>	<i>-8%</i>	<i>-2%</i>	<i>38%</i>	<i>12%</i>
<i>Wood &amp; paper; printing</i>	<i>CD</i>	<i>12%</i>	<i>6%</i>	<i>16%</i>	<i>17%</i>	<i>24%</i>	<i>47%</i>	<i>27%</i>	<i>12%</i>	<i>-11%</i>	<i>-27%</i>	<i>-1%</i>	<i>5%</i>	<i>17%</i>	<i>33%</i>	<i>17%</i>
<i>Chemicals, rubber &amp; plastic products</i>	<i>CE</i>	<i>25%</i>	<i>14%</i>	<i>17%</i>	<i>20%</i>	<i>24%</i>	<i>44%</i>	<i>34%</i>	<i>24%</i>	<i>5%</i>	<i>-9%</i>	<i>-3%</i>	<i>13%</i>	<i>20%</i>	<i>39%</i>	<i>17%</i>
<i>Non-metallic mineral products</i>	<i>CF</i>	<i>0%</i>	<i>-13%</i>	<i>28%</i>	<i>22%</i>	<i>31%</i>	<i>55%</i>	<i>5%</i>	<i>1%</i>	<i>-6%</i>	<i>-14%</i>	<i>6%</i>	<i>11%</i>	<i>-3%</i>	<i>4%</i>	<i>32%</i>
<i>Metal products, machinery &amp; equipment</i>	<i>CG</i>	<i>8%</i>	<i>31%</i>	<i>36%</i>	<i>14%</i>	<i>19%</i>	<i>28%</i>	<i>11%</i>	<i>23%</i>	<i>-2%</i>	<i>-31%</i>	<i>31%</i>	<i>39%</i>	<i>29%</i>	<i>47%</i>	<i>-11%</i>
<i>Furniture &amp; other manufacturing</i>	<i>CH</i>	<i>23%</i>	<i>12%</i>	<i>9%</i>	<i>1%</i>	<i>1%</i>	<i>2%</i>	<i>2%</i>	<i>6%</i>	<i>0%</i>	<i>-42%</i>	<i>14%</i>	<i>13%</i>	<i>16%</i>	<i>111%</i>	<i>5%</i>
Electricity	D	11%	9%	11%	8%	8%	9%	6%	6%	4%	-6%	2%	8%	2%	23%	12%
Water & waste management	E	2%	1%	3%	3%	3%	3%	2%	1%	2%	1%	3%	3%	3%	4%	5%
Construction	F	-4%	1%	7%	14%	28%	37%	34%	33%	5%	-20%	-6%	-2%	14%	33%	15%
<b>SERVICES</b>	<b>G-T</b>	<b>12%</b>	<b>8%</b>	<b>7%</b>	<b>12%</b>	<b>4%</b>	<b>11%</b>	<b>10%</b>	<b>8%</b>	<b>6%</b>	<b>-16%</b>	<b>-7%</b>	<b>-3%</b>	<b>0%</b>	<b>24%</b>	<b>11%</b>
<b>TRADE &amp; TRANSPORT</b>	<b>G-H</b>	<b>26%</b>	<b>13%</b>	<b>15%</b>	<b>20%</b>	<b>6%</b>	<b>18%</b>	<b>19%</b>	<b>13%</b>	<b>7%</b>	<b>-29%</b>	<b>-12%</b>	<b>-7%</b>	<b>-4%</b>	<b>41%</b>	<b>9%</b>
Maintenance & repair of motor vehicles	GA	6%	7%	6%	7%	6%	6%	7%	9%	1%	-43%	14%	15%	29%	132%	16%
Wholesale & retail trade	GB	27%	12%	14%	21%	5%	24%	21%	14%	11%	-22%	0%	-2%	0%	34%	4%
Transport	HA	26%	15%	18%	20%	8%	11%	18%	12%	0%	-41%	-33%	-19%	-14%	48%	19%
<b>OTHER SERVICES</b>	<b>I-T</b>	<b>8%</b>	<b>6%</b>	<b>5%</b>	<b>8%</b>	<b>3%</b>	<b>8%</b>	<b>7%</b>	<b>5%</b>	<b>5%</b>	<b>-11%</b>	<b>-5%</b>	<b>-2%</b>	<b>1%</b>	<b>18%</b>	<b>12%</b>
Hotels & restaurants	I	1%	8%	11%	10%	7%	9%	11%	12%	3%	-62%	-55%	-44%	-34%	34%	62%
Information & communication	J	18%	15%	17%	8%	2%	9%	-1%	25%	34%	33%	43%	12%	18%	28%	14%
Financial services	K	15%	11%	9%	6%	6%	10%	5%	13%	-5%	-8%	-3%	6%	10%	19%	11%
Real estate activities	L	3%	6%	5%	5%	4%	10%	2%	0%	0%	-7%	1%	8%	3%	6%	5%
Professional, scientific & technical activities	M	13%	7%	10%	8%	11%	13%	6%	9%	-1%	-6%	2%	1%	10%	20%	11%
Administrative & support service activities	N	6%	4%	5%	2%	2%	3%	6%	7%	1%	-8%	-9%	-11%	-4%	10%	7%
Public administration & defense; compulsory social security	O	12%	2%	-4%	21%	-3%	9%	12%	1%	14%	-3%	1%	0%	-2%	8%	1%
Education	P	4%	4%	4%	4%	2%	2%	2%	2%	-3%	-67%	-57%	-23%	5%	168%	140%
Human health & social work activities	Q	5%	2%	-3%	-5%	-4%	5%	14%	-1%	32%	5%	6%	24%	-12%	22%	5%
Cultural, domestic & other services	R-T	7%	9%	7%	14%	8%	9%	10%	5%	-1%	-4%	1%	-2%	6%	13%	6%
<b>Taxes less subsidies on products</b>		<b>10%</b>	<b>9%</b>	<b>7%</b>	<b>11%</b>	<b>9%</b>	<b>24%</b>	<b>16%</b>	<b>12%</b>	<b>9%</b>	<b>-9%</b>	<b>-4%</b>	<b>-2%</b>	<b>3%</b>	<b>27%</b>	<b>11%</b>

Source: National Institute of Statistics of Rwanda  
December 16, 2021

**Table 2B**  
**Gross Domestic Product by Kind of Activity**  
**Contribution to the growth rates**  
*(Percentage point)*

Activity description	ISIC4	2018 Q1	2018 Q2	2018 Q3	2018 Q4	2019 Q1	2019 Q2	2019 Q3	2019 Q4	2020 Q1	2020 Q2	2020 Q3	2020 Q4	2021 Q1	2021 Q2	2021 Q3
<b>GROSS DOMESTIC PRODUCT (GDP)</b>		<b>9.8</b>	<b>7.8</b>	<b>7.1</b>	<b>9.6</b>	<b>6.2</b>	<b>12.3</b>	<b>10.9</b>	<b>8.4</b>	<b>3.7</b>	<b>-12.4</b>	<b>-3.6</b>	<b>-0.6</b>	<b>3.5</b>	<b>20.6</b>	<b>10.1</b>
<b>AGRICULTURE, FORESTRY &amp; FISHING</b>	<b>A</b>	<b>2.4</b>	<b>1.9</b>	<b>1.2</b>	<b>1.0</b>	<b>1.1</b>	<b>1.3</b>	<b>1.7</b>	<b>1.1</b>	<b>-0.1</b>	<b>-0.4</b>	<b>0.5</b>	<b>0.8</b>	<b>1.7</b>	<b>2.0</b>	<b>1.6</b>
Food crops	AA	1.4	1.4	0.6	0.6	0.6	0.6	0.7	0.7	-0.3	-0.3	0.4	0.4	1.1	1.3	1.0
Export crops	AB	0.5	0.0	0.1	-0.1	-0.1	0.1	0.4	-0.1	-0.2	-0.2	-0.2	0.0	0.1	0.0	0.0
Livestock & livestock products	AC	0.2	0.3	0.3	0.3	0.3	0.3	0.3	0.3	0.2	0.2	0.2	0.2	0.2	0.3	0.2
Forestry	AD	0.2	0.2	0.2	0.2	0.3	0.3	0.3	0.3	0.2	0.1	0.2	0.2	0.2	0.3	0.3
Fishing	AE	0.0	0.0	0.0	0.0	0.0	0.0	0.0	0.0	0.0	-0.2	-0.1	0.0	0.0	0.2	0.1
<b>INDUSTRY</b>	<b>B-F</b>	<b>0.7</b>	<b>1.4</b>	<b>1.7</b>	<b>2.1</b>	<b>2.4</b>	<b>3.7</b>	<b>2.8</b>	<b>2.5</b>	<b>0.3</b>	<b>-3.5</b>	<b>-0.3</b>	<b>0.3</b>	<b>1.7</b>	<b>5.1</b>	<b>2.2</b>
Mining & quarrying	B	-0.1	0.1	0.1	0.0	0.3	0.3	-0.3	-0.3	-0.5	-1.1	-0.4	-0.3	0.0	0.9	0.4
<b>TOTAL MANUFACTURING</b>	<b>C</b>	<b>0.9</b>	<b>1.1</b>	<b>1.1</b>	<b>1.1</b>	<b>0.6</b>	<b>1.3</b>	<b>1.0</b>	<b>0.7</b>	<b>0.4</b>	<b>-1.1</b>	<b>0.5</b>	<b>0.8</b>	<b>0.7</b>	<b>1.9</b>	<b>0.6</b>
<i>Of which: Food</i>	<i>CA</i>	<i>0.5</i>	<i>0.7</i>	<i>0.0</i>	<i>0.3</i>	<i>0.0</i>	<i>0.1</i>	<i>0.4</i>	<i>0.0</i>	<i>0.3</i>	<i>0.0</i>	<i>0.2</i>	<i>0.3</i>	<i>0.2</i>	<i>0.4</i>	<i>0.2</i>
<i>Beverages &amp; tobacco</i>	<i>CB</i>	<i>-0.2</i>	<i>-0.1</i>	<i>0.3</i>	<i>0.2</i>	<i>0.1</i>	<i>0.4</i>	<i>0.2</i>	<i>0.2</i>	<i>0.1</i>	<i>-0.3</i>	<i>0.1</i>	<i>0.2</i>	<i>0.1</i>	<i>0.2</i>	<i>0.1</i>
<i>Textiles, clothing &amp; leather goods</i>	<i>CC</i>	<i>0.2</i>	<i>0.2</i>	<i>0.3</i>	<i>0.3</i>	<i>0.1</i>	<i>0.1</i>	<i>0.1</i>	<i>0.2</i>	<i>0.1</i>	<i>-0.1</i>	<i>0.0</i>	<i>-0.1</i>	<i>0.0</i>	<i>0.2</i>	<i>0.1</i>
<i>Wood &amp; paper; printing</i>	<i>CD</i>	<i>0.0</i>	<i>0.0</i>	<i>0.1</i>	<i>0.1</i>	<i>0.1</i>	<i>0.2</i>	<i>0.1</i>	<i>0.0</i>	<i>0.0</i>	<i>-0.1</i>	<i>0.0</i>	<i>0.0</i>	<i>0.1</i>	<i>0.1</i>	<i>0.1</i>
<i>Chemicals, rubber &amp; plastic products</i>	<i>CE</i>	<i>0.1</i>	<i>0.1</i>	<i>0.1</i>	<i>0.1</i>	<i>0.1</i>	<i>0.2</i>	<i>0.2</i>	<i>0.1</i>	<i>0.0</i>	<i>-0.1</i>	<i>0.0</i>	<i>0.1</i>	<i>0.1</i>	<i>0.3</i>	<i>0.1</i>
<i>Non-metallic mineral products</i>	<i>CF</i>	<i>0.0</i>	<i>-0.1</i>	<i>0.1</i>	<i>0.1</i>	<i>0.1</i>	<i>0.2</i>	<i>0.0</i>	<i>0.0</i>	<i>0.0</i>	<i>-0.1</i>	<i>0.0</i>	<i>0.0</i>	<i>0.0</i>	<i>0.0</i>	<i>0.2</i>
<i>Metal products, machinery &amp; equipment</i>	<i>CG</i>	<i>0.0</i>	<i>0.1</i>	<i>0.2</i>	<i>0.1</i>	<i>0.1</i>	<i>0.1</i>	<i>0.1</i>	<i>0.1</i>	<i>0.0</i>	<i>-0.2</i>	<i>0.2</i>	<i>0.2</i>	<i>0.1</i>	<i>0.2</i>	<i>-0.1</i>
<i>Furniture &amp; other manufacturing</i>	<i>CH</i>	<i>0.2</i>	<i>0.1</i>	<i>0.1</i>	<i>0.0</i>	<i>0.0</i>	<i>0.0</i>	<i>0.0</i>	<i>0.0</i>	<i>0.0</i>	<i>-0.3</i>	<i>0.1</i>	<i>0.1</i>	<i>0.1</i>	<i>0.5</i>	<i>0.0</i>
Electricity	D	0.1	0.1	0.1	0.1	0.1	0.1	0.1	0.1	0.0	-0.1	0.0	0.1	0.0	0.3	0.1
Water & waste management	E	0.0	0.0	0.0	0.0	0.0	0.0	0.0	0.0	0.0	0.0	0.0	0.0	0.0	0.0	0.0
Construction	F	-0.3	0.1	0.4	0.9	1.5	2.0	2.0	2.0	0.3	-1.3	-0.4	-0.2	1.0	2.0	1.1
<b>SERVICES</b>	<b>G-T</b>	<b>5.8</b>	<b>3.8</b>	<b>3.6</b>	<b>5.5</b>	<b>1.9</b>	<b>5.3</b>	<b>5.1</b>	<b>3.7</b>	<b>2.7</b>	<b>-7.7</b>	<b>-3.6</b>	<b>-1.6</b>	<b>-0.2</b>	<b>10.8</b>	<b>5.3</b>
<b>TRADE &amp; TRANSPORT</b>	<b>G-H</b>	<b>3.1</b>	<b>1.7</b>	<b>2.0</b>	<b>2.6</b>	<b>0.8</b>	<b>2.5</b>	<b>2.8</b>	<b>1.9</b>	<b>1.0</b>	<b>-4.1</b>	<b>-1.8</b>	<b>-1.1</b>	<b>-0.6</b>	<b>4.7</b>	<b>1.2</b>
Maintenance & repair of motor vehicles	GA	0.0	0.0	0.0	0.0	0.0	0.0	0.0	0.0	0.0	-0.2	0.1	0.1	0.1	0.4	0.1
Wholesale & retail trade	GB	2.0	1.0	1.1	1.6	0.4	1.9	1.8	1.2	1.0	-1.9	0.0	-0.1	0.0	2.7	0.4
Transport	HA	1.1	0.7	0.9	1.0	0.4	0.5	1.0	0.6	0.0	-2.0	-1.8	-1.0	-0.7	1.6	0.8
<b>OTHER SERVICES</b>	<b>I-T</b>	<b>2.6</b>	<b>2.1</b>	<b>1.6</b>	<b>2.9</b>	<b>1.1</b>	<b>2.8</b>	<b>2.3</b>	<b>1.9</b>	<b>1.7</b>	<b>-3.6</b>	<b>-1.8</b>	<b>-0.5</b>	<b>0.4</b>	<b>6.2</b>	<b>4.1</b>
Hotels & restaurants	I	0.0	0.1	0.2	0.2	0.1	0.2	0.2	0.2	0.1	-1.1	-1.0	-0.8	-0.6	0.2	0.5
Information & communication	J	0.3	0.3	0.3	0.2	0.0	0.2	0.0	0.5	0.5	0.6	0.8	0.3	0.4	0.7	0.4
Financial services	K	0.4	0.3	0.2	0.1	0.2	0.3	0.1	0.3	-0.1	-0.2	-0.1	0.1	0.2	0.5	0.3
Real estate activities	L	0.3	0.4	0.4	0.3	0.3	0.7	0.1	0.0	0.0	-0.5	0.1	0.5	0.2	0.5	0.3
Professional, scientific & technical activities	M	0.3	0.1	0.2	0.2	0.2	0.3	0.1	0.2	0.0	-0.1	0.0	0.0	0.2	0.5	0.2
Administrative & support service activities	N	0.2	0.1	0.2	0.1	0.1	0.1	0.2	0.2	0.0	-0.2	-0.3	-0.4	-0.1	0.3	0.2
Public administration & defense; compulsory social security	O	0.7	0.1	-0.2	1.1	-0.2	0.5	0.7	0.1	0.8	-0.2	0.1	0.0	-0.1	0.5	0.1
Education	P	0.1	0.1	0.1	0.1	0.1	0.1	0.1	0.1	-0.1	-1.8	-1.5	-0.6	0.1	1.7	1.6
Human health & social work activities	Q	0.1	0.0	-0.1	-0.1	-0.1	0.1	0.2	0.0	0.6	0.1	0.1	0.4	-0.3	0.5	0.1
Cultural, domestic & other services	R-T	0.4	0.5	0.4	0.7	0.4	0.5	0.5	0.3	0.0	-0.2	0.0	-0.1	0.3	0.7	0.3
<b>Taxes less subsidies on products</b>	<b>0</b>	<b>0.9</b>	<b>0.8</b>	<b>0.6</b>	<b>1.0</b>	<b>0.7</b>	<b>2.0</b>	<b>1.3</b>	<b>1.1</b>	<b>0.8</b>	<b>-0.8</b>	<b>-0.3</b>	<b>-0.2</b>	<b>0.3</b>	<b>2.6</b>	<b>1.0</b>

Source: National Institute of Statistics of Rwanda  
December 16, 2021



**Table 3**  
**Gross Domestic Product by Kind of Activity**  
**Deflators**  
*(2017=100)*

Activity description	ISIC4	2017	2018 Q1	2018 Q2	2018 Q3	2018 Q4	2019 Q1	2019 Q2	2019 Q3	2019 Q4	2020 Q1	2020 Q2	2020 Q3	2020 Q4	2021 Q1	2021 Q2	2021 Q3
<b>GROSS DOMESTIC PRODUCT (GDP)</b>		<b>100</b>	<b>99</b>	<b>100</b>	<b>99</b>	<b>99</b>	<b>99</b>	<b>102</b>	<b>101</b>	<b>105</b>	<b>107</b>	<b>108</b>	<b>110</b>	<b>110</b>	<b>111</b>	<b>109</b>	<b>111</b>
<b>AGRICULTURE, FORESTRY &amp; FISHING</b>	<b>A</b>	<b>100</b>	<b>96</b>	<b>97</b>	<b>94</b>	<b>93</b>	<b>90</b>	<b>96</b>	<b>98</b>	<b>104</b>	<b>110</b>	<b>109</b>	<b>112</b>	<b>118</b>	<b>114</b>	<b>110</b>	<b>106</b>
Food crops	AA	100	89	88	80	79	79	86	88	97	102	100	104	117	105	96	90
Export crops	AB	100	92	92	96	94	77	74	73	75	101	94	85	88	99	99	92
Livestock & livestock products	AC	100	102	103	103	104	105	108	114	117	119	126	129	130	128	136	136
Forestry	AD	100	118	128	132	132	129	131	131	131	136	135	137	125	142	144	142
Fishing	AE	100	115	111	106	101	101	106	110	115	107	114	120	127	117	127	130
<b>INDUSTRY</b>	<b>B-F</b>	<b>100</b>	<b>99</b>	<b>100</b>	<b>100</b>	<b>99</b>	<b>102</b>	<b>103</b>	<b>104</b>	<b>108</b>	<b>110</b>	<b>116</b>	<b>111</b>	<b>109</b>	<b>117</b>	<b>111</b>	<b>124</b>
Mining & quarrying	B	100	92	115	122	104	112	83	74	50	102	109	110	96	139	155	225
<b>TOTAL MANUFACTURING</b>	<b>C</b>	<b>100</b>	<b>97</b>	<b>95</b>	<b>93</b>	<b>92</b>	<b>96</b>	<b>100</b>	<b>106</b>	<b>115</b>	<b>109</b>	<b>116</b>	<b>112</b>	<b>107</b>	<b>122</b>	<b>116</b>	<b>118</b>
<i>Of which: Food</i>	<i>CA</i>	<i>100</i>	<i>84</i>	<i>80</i>	<i>71</i>	<i>76</i>	<i>84</i>	<i>96</i>	<i>109</i>	<i>129</i>	<i>103</i>	<i>122</i>	<i>110</i>	<i>102</i>	<i>125</i>	<i>109</i>	<i>116</i>
<i>Beverages &amp; tobacco</i>	<i>CB</i>	<i>100</i>	<i>109</i>	<i>109</i>	<i>104</i>	<i>104</i>	<i>102</i>	<i>104</i>	<i>100</i>	<i>108</i>	<i>115</i>	<i>111</i>	<i>106</i>	<i>106</i>	<i>124</i>	<i>127</i>	<i>119</i>
<i>Textiles, clothing &amp; leather goods</i>	<i>CC</i>	<i>100</i>	<i>113</i>	<i>111</i>	<i>111</i>	<i>107</i>	<i>120</i>	<i>111</i>	<i>111</i>	<i>109</i>	<i>121</i>	<i>141</i>	<i>141</i>	<i>135</i>	<i>150</i>	<i>138</i>	<i>133</i>
<i>Wood &amp; paper; printing</i>	<i>CD</i>	<i>100</i>	<i>98</i>	<i>94</i>	<i>92</i>	<i>92</i>	<i>92</i>	<i>92</i>	<i>91</i>	<i>92</i>	<i>87</i>	<i>88</i>	<i>86</i>	<i>103</i>	<i>99</i>	<i>97</i>	<i>94</i>
<i>Chemicals, rubber &amp; plastic products</i>	<i>CE</i>	<i>100</i>	<i>102</i>	<i>95</i>	<i>103</i>	<i>82</i>	<i>92</i>	<i>87</i>	<i>117</i>	<i>123</i>	<i>122</i>	<i>121</i>	<i>152</i>	<i>109</i>	<i>122</i>	<i>137</i>	<i>146</i>
<i>Non-metallic mineral products</i>	<i>CF</i>	<i>100</i>	<i>100</i>	<i>88</i>	<i>91</i>	<i>90</i>	<i>91</i>	<i>94</i>	<i>108</i>	<i>104</i>	<i>109</i>	<i>93</i>	<i>102</i>	<i>106</i>	<i>105</i>	<i>78</i>	<i>108</i>
<i>Metal products, machinery &amp; equipment</i>	<i>CG</i>	<i>100</i>	<i>100</i>	<i>102</i>	<i>102</i>	<i>101</i>	<i>101</i>	<i>100</i>	<i>99</i>	<i>99</i>	<i>99</i>	<i>100</i>	<i>98</i>	<i>100</i>	<i>101</i>	<i>101</i>	<i>101</i>
<i>Furniture &amp; other manufacturing</i>	<i>CH</i>	<i>100</i>	<i>101</i>	<i>104</i>	<i>108</i>	<i>112</i>	<i>114</i>	<i>115</i>	<i>115</i>	<i>116</i>	<i>115</i>	<i>116</i>	<i>115</i>	<i>116</i>	<i>119</i>	<i>121</i>	<i>122</i>
Electricity	D	100	98	96	94	92	90	93	91	93	92	93	91	92	90	86	83
Water & waste management	E	100	98	98	101	100	147	169	171	170	170	170	174	172	174	173	178
Construction	F	100	106	103	103	106	104	112	108	113	112	118	110	112	106	95	113
<b>SERVICES</b>	<b>G-T</b>	<b>100</b>	<b>101</b>	<b>102</b>	<b>103</b>	<b>103</b>	<b>103</b>	<b>105</b>	<b>105</b>	<b>105</b>	<b>107</b>	<b>107</b>	<b>110</b>	<b>109</b>	<b>111</b>	<b>111</b>	<b>114</b>
<b>TRADE &amp; TRANSPORT</b>	<b>G-H</b>	<b>100</b>	<b>101</b>	<b>102</b>	<b>106</b>	<b>106</b>	<b>105</b>	<b>101</b>	<b>107</b>	<b>108</b>	<b>112</b>	<b>116</b>	<b>118</b>	<b>120</b>	<b>124</b>	<b>122</b>	<b>127</b>
Maintenance & repair of motor vehicles	GA	100	100	106	106	107	106	109	110	113	114	134	141	118	115	114	112
Wholesale & retail trade	GB	100	99	100	103	100	98	96	98	95	102	103	100	99	108	111	123
Transport	HA	100	105	106	113	116	118	109	122	130	132	147	157	164	161	147	136
<b>OTHER SERVICES</b>	<b>I-T</b>	<b>100</b>	<b>101</b>	<b>101</b>	<b>101</b>	<b>101</b>	<b>103</b>	<b>107</b>	<b>103</b>	<b>104</b>	<b>104</b>	<b>104</b>	<b>107</b>	<b>105</b>	<b>106</b>	<b>107</b>	<b>108</b>
Hotels & restaurants	I	100	103	100	107	110	109	104	104	102	93	97	95	93	89	91	93
Information & communication	J	100	111	100	82	88	114	118	119	99	78	84	97	101	74	85	83
Financial services	K	100	96	93	103	99	97	102	92	104	109	99	115	77	110	110	109
Real estate activities	L	100	103	103	105	103	105	114	105	101	104	101	106	110	105	106	108
Professional, scientific & technical activities	M	100	100	103	102	101	101	103	104	108	110	113	114	113	112	113	113
Administrative & support service activities	N	100	100	103	101	100	101	103	104	107	110	112	113	112	112	113	112
Public administration & defense; compulsory social security	O	100	102	103	103	102	104	105	105	106	108	109	110	110	110	111	112
Education	P	100	97	102	99	103	100	109	104	110	113	113	105	104	126	124	142
Human health & social work activities	Q	100	98	98	94	96	93	97	94	95	99	97	93	96	94	96	88
Cultural, domestic & other services	R-T	100	102	103	102	103	102	104	103	105	105	106	106	106	107	107	107
<b>Taxes less subsidies on products</b>		<b>100</b>	<b>97</b>	<b>103</b>	<b>94</b>	<b>94</b>	<b>98</b>	<b>98</b>	<b>90</b>	<b>98</b>	<b>95</b>	<b>94</b>	<b>97</b>	<b>99</b>	<b>91</b>	<b>97</b>	<b>88</b>

Source: National Institute of Statistics of Rwanda  
December 16, 2021

**Table 4**  
**Expenditure on GDP**  
**( in billion Frw)**

	2017	2018 Q1	2018 Q2	2018 Q3	2018 Q4	2019 Q1	2019 Q2	2019 Q3	2019 Q4	2020 Q1	2020 Q2	2020 Q3	2020 Q4	2021 Q1	2021 Q2	2021 Q3
<b>In current prices</b>																
<b>Gross Domestic Product</b>	7,694	2,027	2,057	2,079	2,139	2,153	2,347	2,357	2,458	2,410	2,177	2,453	2,572	2,588	2,666	2,746
<b>Total final consumption expenditure</b>	6,831	1,999	1,855	1,880	1,936	1,961	2,175	2,278	2,074	2,292	1,921	2,413	2,242	2,375	2,423	2,478
Government	1,155	281	291	327	324	335	439	335	363	399	380	382	412	423	464	506
Households and NGOs	5,676	1,717	1,564	1,553	1,612	1,626	1,736	1,944	1,711	1,894	1,540	2,031	1,830	1,951	1,959	1,972
<b>Gross capital formation</b>	1,834	325	440	458	534	488	511	433	729	563	608	435	726	596	634	732
<b>Gross fixed capital formation</b>	1,748	450	443	486	526	557	662	616	669	618	499	625	689	715	652	743
Construction	1,143	282	287	321	347	369	402	429	451	391	323	407	452	437	406	509
Other	605	168	156	165	179	188	260	187	218	227	176	218	236	278	245	234
<b>Change in inventories</b>	86	-125	-3	-28	8	-69	-151	-183	60	-55	108	-190	38	-120	-18	-11
<b>Resource balance</b>	-971	-297	-238	-259	-332	-296	-339	-354	-345	-445	-351	-395	-396	-382	-391	-463
<b>Exports of goods &amp; services</b>	1,580	396	422	494	440	426	459	567	579	461	333	615	446	421	536	519
Goods (fob)	853	235	244	242	235	225	256	301	326	291	261	481	329	282	353	375
Services	726	161	177	252	206	201	203	266	253	170	72	134	117	138	183	144
<b>Imports of goods &amp; services</b>	2,550	692	660	753	772	722	798	921	924	906	684	1,010	842	803	927	982
Goods (fob)	1,672	467	457	508	537	494	595	658	689	703	602	879	743	707	801	806
Services	878	226	204	245	235	228	203	263	235	202	82	131	98	96	126	176
<b>In constant 2017 prices</b>																
<b>Gross Domestic Product</b>	7,694	2,044	2,053	2,094	2,164	2,170	2,306	2,322	2,347	2,249	2,019	2,238	2,331	2,329	2,435	2,464
<b>Total final consumption expenditure</b>	6,831	1,983	1,788	1,833	1,926	1,942	2,084	2,149	1,917	2,056	1,705	2,062	1,962	2,070	2,119	2,140
Government	1,155	282	290	321	321	329	432	324	341	378	356	343	377	377	427	439
Households and NGOs	5,676	1,701	1,498	1,513	1,605	1,613	1,653	1,824	1,576	1,679	1,349	1,719	1,585	1,693	1,692	1,701
<b>Gross capital formation</b>	1,834	338	477	494	531	499	520	468	732	573	584	431	711	596	620	666
<b>Gross fixed capital formation</b>	1,748	439	429	473	511	541	636	606	663	594	475	602	663	694	636	675
Construction	1,143	274	278	310	334	352	380	415	443	371	304	392	432	424	405	451
Other	605	165	151	162	178	190	258	189	219	225	171	209	231	271	232	222
<b>Change in inventories</b>	86	-99	47	21	20	-41	-113	-134	69	-21	107	-166	47	-95	-15	-8
<b>Resource balance</b>	-971	-277	-211	-233	-293	-271	-298	-294	-303	-379	-270	-255	-341	-337	-304	-342
<b>Exports of goods &amp; services</b>	1,580	396	414	489	443	431	469	594	595	486	357	632	422	396	495	478
Goods (fob)	853	236	241	241	239	232	273	339	359	331	292	513	318	272	333	350
Services	726	161	173	248	204	199	196	256	237	155	65	118	104	124	163	128
<b>Imports of goods &amp; services</b>	2,550	673	626	722	736	701	767	889	898	865	627	887	763	733	799	820
Goods (fob)	1,672	453	433	487	512	480	571	635	670	672	552	771	674	645	691	672
Services	878	219	193	235	224	221	195	254	228	193	75	115	89	87	108	147

Source: National Institute of Statistics of Rwanda  
December 16, 2021

**Deflators**

<b>Gross Domestic Product</b>	100	99	100	99	99	99	102	101	105	107	108	110	110	111	109	111
<b>Total final consumption expenditure</b>	100	101	104	103	101	101	104	106	108	111	113	117	114	115	114	116
Government	100	100	100	102	101	102	102	103	107	106	107	111	109	112	109	115
Households and NGOs	100	101	104	103	100	101	105	107	109	113	114	118	115	115	116	116
<b>Gross capital formation</b>	100	96	92	93	101	98	98	92	100	98	104	101	102	100	102	110
<b>Gross fixed capital formation</b>	100	103	103	103	103	103	104	102	101	104	105	104	104	103	102	110
Construction	100	103	103	104	104	105	106	103	102	105	106	104	105	103	100	113
Other	100	102	104	101	101	99	101	99	99	101	103	104	102	102	106	105
<b>Change in inventories</b>																
<b>Resource balance</b>	100	107	113	111	113	109	114	120	114	117	130	155	116	113	129	135
<b>Exports of goods &amp; services</b>	100	100	102	101	99	99	98	95	97	95	93	97	106	106	108	109
Goods (fob)	100	100	101	101	98	97	94	89	91	88	89	94	103	104	106	107
Services	100	100	103	102	101	101	104	104	107	110	112	114	112	112	113	113
<b>Imports of goods &amp; services</b>	100	103	106	104	105	103	104	104	103	105	109	114	110	110	116	120
Goods (fob)	100	103	106	104	105	103	104	104	103	105	109	114	110	110	116	120
Services	100	103	106	104	105	103	104	104	103	105	109	114	110	110	116	120

Source: National Institute of Statistics of Rwanda  
December 16, 2021

**Table 4a**  
**Expenditure on GDP**

	2017	2018 Q1	2018 Q2	2018 Q3	2018 Q4	2019 Q1	2019 Q2	2019 Q3	2019 Q4	2020 Q1	2020 Q2	2020 Q3	2020 Q4	2021 Q1	2021 Q2	2021 Q3
<b>Percentage of GDP, in current prices</b>																
<b>Gross Domestic Product</b>	<b>100%</b>	<b>100%</b>	<b>100%</b>	<b>100%</b>	<b>100%</b>	<b>100%</b>	<b>100%</b>	<b>100%</b>	<b>100%</b>	<b>100%</b>	<b>100%</b>	<b>100%</b>	<b>100%</b>	<b>100%</b>	<b>100%</b>	<b>100%</b>
<b>Total final consumption expenditure</b>	<b>99%</b>	<b>90%</b>	<b>90%</b>	<b>91%</b>	<b>91%</b>	<b>93%</b>	<b>97%</b>	<b>84%</b>	<b>95%</b>	<b>88%</b>	<b>98%</b>	<b>87%</b>	<b>92%</b>	<b>91%</b>	<b>90%</b>	
Government	14%	14%	16%	15%	16%	19%	14%	15%	17%	17%	16%	16%	16%	17%	18%	
Households and NGOs	85%	76%	75%	75%	76%	74%	82%	70%	79%	71%	83%	71%	75%	73%	72%	
<b>Gross capital formation</b>	<b>16%</b>	<b>21%</b>	<b>22%</b>	<b>25%</b>	<b>23%</b>	<b>22%</b>	<b>18%</b>	<b>30%</b>	<b>23%</b>	<b>28%</b>	<b>18%</b>	<b>28%</b>	<b>23%</b>	<b>24%</b>	<b>27%</b>	
<b>Gross fixed capital formation</b>	<b>22%</b>	<b>22%</b>	<b>23%</b>	<b>25%</b>	<b>26%</b>	<b>28%</b>	<b>26%</b>	<b>27%</b>	<b>26%</b>	<b>23%</b>	<b>25%</b>	<b>27%</b>	<b>28%</b>	<b>24%</b>	<b>27%</b>	
Construction	14%	14%	15%	16%	17%	17%	18%	18%	16%	15%	17%	18%	17%	15%	19%	
Other	8%	8%	8%	8%	9%	11%	8%	9%	9%	8%	9%	9%	11%	9%	9%	
<b>Change in inventories</b>	<b>-6%</b>	<b>0%</b>	<b>-1%</b>	<b>0%</b>	<b>-3%</b>	<b>-6%</b>	<b>-8%</b>	<b>2%</b>	<b>-2%</b>	<b>5%</b>	<b>-8%</b>	<b>1%</b>	<b>-5%</b>	<b>-1%</b>	<b>0%</b>	
<b>Resource balance</b>	<b>-15%</b>	<b>-12%</b>	<b>-12%</b>	<b>-16%</b>	<b>-14%</b>	<b>-14%</b>	<b>-15%</b>	<b>-14%</b>	<b>-18%</b>	<b>-16%</b>	<b>-16%</b>	<b>-15%</b>	<b>-15%</b>	<b>-15%</b>	<b>-17%</b>	
<b>Exports of goods &amp; services</b>	<b>20%</b>	<b>21%</b>	<b>24%</b>	<b>21%</b>	<b>20%</b>	<b>20%</b>	<b>24%</b>	<b>24%</b>	<b>19%</b>	<b>15%</b>	<b>25%</b>	<b>17%</b>	<b>16%</b>	<b>20%</b>	<b>19%</b>	
Goods (fob)	12%	12%	12%	11%	10%	11%	13%	13%	12%	12%	20%	13%	11%	13%	14%	
Services	8%	9%	12%	10%	9%	9%	11%	10%	7%	3%	5%	5%	5%	7%	5%	
<b>Imports of goods &amp; services</b>	<b>34%</b>	<b>32%</b>	<b>36%</b>	<b>36%</b>	<b>34%</b>	<b>34%</b>	<b>39%</b>	<b>38%</b>	<b>38%</b>	<b>31%</b>	<b>41%</b>	<b>33%</b>	<b>31%</b>	<b>35%</b>	<b>36%</b>	
Goods (fob)	23%	22%	24%	25%	23%	25%	28%	28%	29%	28%	36%	29%	27%	30%	29%	
Services	11%	10%	12%	11%	11%	9%	11%	10%	8%	4%	5%	4%	4%	5%	6%	
<b>Growth rates, in constant 2017 prices</b>																
<b>Gross Domestic Product</b>	<b>9.8%</b>	<b>7.8%</b>	<b>7.1%</b>	<b>9.6%</b>	<b>6.2%</b>	<b>12.3%</b>	<b>10.9%</b>	<b>8.4%</b>	<b>3.7%</b>	<b>-12.4%</b>	<b>-3.6%</b>	<b>-0.6%</b>	<b>3.5%</b>	<b>20.6%</b>	<b>10.1%</b>	
<b>Total final consumption expenditure</b>	<b>25%</b>	<b>4%</b>	<b>4%</b>	<b>10%</b>	<b>-2%</b>	<b>17%</b>	<b>17%</b>	<b>0%</b>	<b>6%</b>	<b>-18%</b>	<b>-4%</b>	<b>2%</b>	<b>1%</b>	<b>24%</b>	<b>4%</b>	
Government	4%	3%	4%	9%	17%	49%	1%	6%	15%	-18%	6%	11%	0%	20%	28%	
Households and NGOs	29%	4%	3%	10%	-5%	10%	21%	-2%	4%	-18%	-6%	1%	1%	25%	-1%	
<b>Gross capital formation</b>	<b>-33%</b>	<b>18%</b>	<b>7%</b>	<b>14%</b>	<b>48%</b>	<b>9%</b>	<b>-5%</b>	<b>38%</b>	<b>15%</b>	<b>12%</b>	<b>-8%</b>	<b>-3%</b>	<b>4%</b>	<b>6%</b>	<b>54%</b>	
<b>Gross fixed capital formation</b>	<b>1%</b>	<b>2%</b>	<b>5%</b>	<b>15%</b>	<b>23%</b>	<b>48%</b>	<b>28%</b>	<b>30%</b>	<b>10%</b>	<b>-25%</b>	<b>-1%</b>	<b>0%</b>	<b>17%</b>	<b>34%</b>	<b>12%</b>	
Construction	-4%	1%	7%	14%	28%	37%	34%	33%	5%	-20%	-6%	-2%	14%	33%	15%	
Other	13%	4%	1%	16%	15%	71%	16%	24%	18%	-34%	11%	5%	21%	35%	6%	
<b>Change in inventories</b>																
<b>Resource balance</b>																
<b>Exports of goods &amp; services</b>	<b>10%</b>	<b>7%</b>	<b>22%</b>	<b>3%</b>	<b>9%</b>	<b>13%</b>	<b>22%</b>	<b>34%</b>	<b>13%</b>	<b>-24%</b>	<b>6%</b>	<b>-29%</b>	<b>-19%</b>	<b>39%</b>	<b>-24%</b>	
Goods (fob)	23%	15%	8%	5%	-2%	13%	41%	50%	43%	7%	52%	-11%	-18%	14%	-32%	
Services	-5%	-2%	38%	2%	24%	13%	3%	16%	-22%	-67%	-54%	-56%	-20%	151%	8%	
<b>Imports of goods &amp; services</b>	<b>14%</b>	<b>2%</b>	<b>6%</b>	<b>10%</b>	<b>4%</b>	<b>23%</b>	<b>23%</b>	<b>22%</b>	<b>23%</b>	<b>-18%</b>	<b>0%</b>	<b>-15%</b>	<b>-15%</b>	<b>27%</b>	<b>-8%</b>	
Goods (fob)	16%	6%	12%	18%	6%	32%	30%	31%	40%	-3%	22%	1%	-4%	25%	-13%	
Services	9%	-5%	-3%	-4%	1%	1%	8%	2%	-13%	-61%	-55%	-61%	-55%	44%	27%	

*Source: National Institute of Statistics of Rwanda  
December 16, 2021*

**Contacts:**

National Institute of Statistics of Rwanda (NISR),  
P.O. BOX 6139 Kigali,  
Tel.: (250) 571035 Fax: (250) 570705.  
Web site: <http://www.statistics.gov.rw>

**Publication Directors:**

**MURANGWA Yusuf**, Director General, NISR;

[yusuf.murangwa@statistics.gov.rw](mailto:yusuf.murangwa@statistics.gov.rw);

**MURENZI Ivan**, Deputy Director General, NISR;

[ivan.murenzi@statistics.gov.rw](mailto:ivan.murenzi@statistics.gov.rw);

**MWIZERWA J. Claude**, Director of Economic Statistics Department, NISR;

[claudemwizerwa@statistics.gov.rw](mailto:claudemwizerwa@statistics.gov.rw);

**KAYITARE Ivan Patrick**, National Accounts Research Statistician Team Leader, NISR;

[patrick.kayitare@statistics.gov.rw](mailto:patrick.kayitare@statistics.gov.rw);