

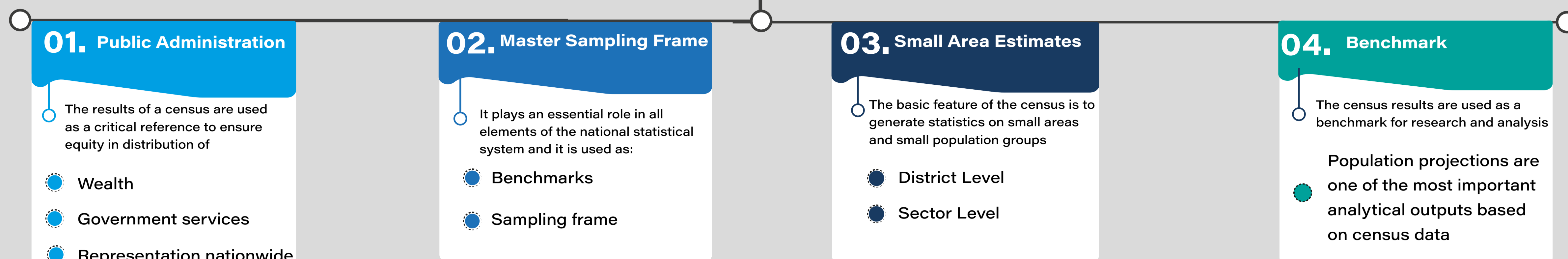
RWANDA POPULATION AND HOUSING CENSUS

GENERAL OVERVIEW OF PHC

Population and Housing Census (PHC) is a full count of people and housing units in a nation on a specific date. In Rwanda population and housing census (RPHC) is undertaken every ten years.

OBJECTIVE OF PHC

Based on Long term Objective



TIMELINE OF PHC CARRIED OUT IN RWANDA

A recent RPHC happened in 2012 at 4th time



PHC - PHASES

There are different phases to attain the desired result to ensure users and policy makers have confidence in data:

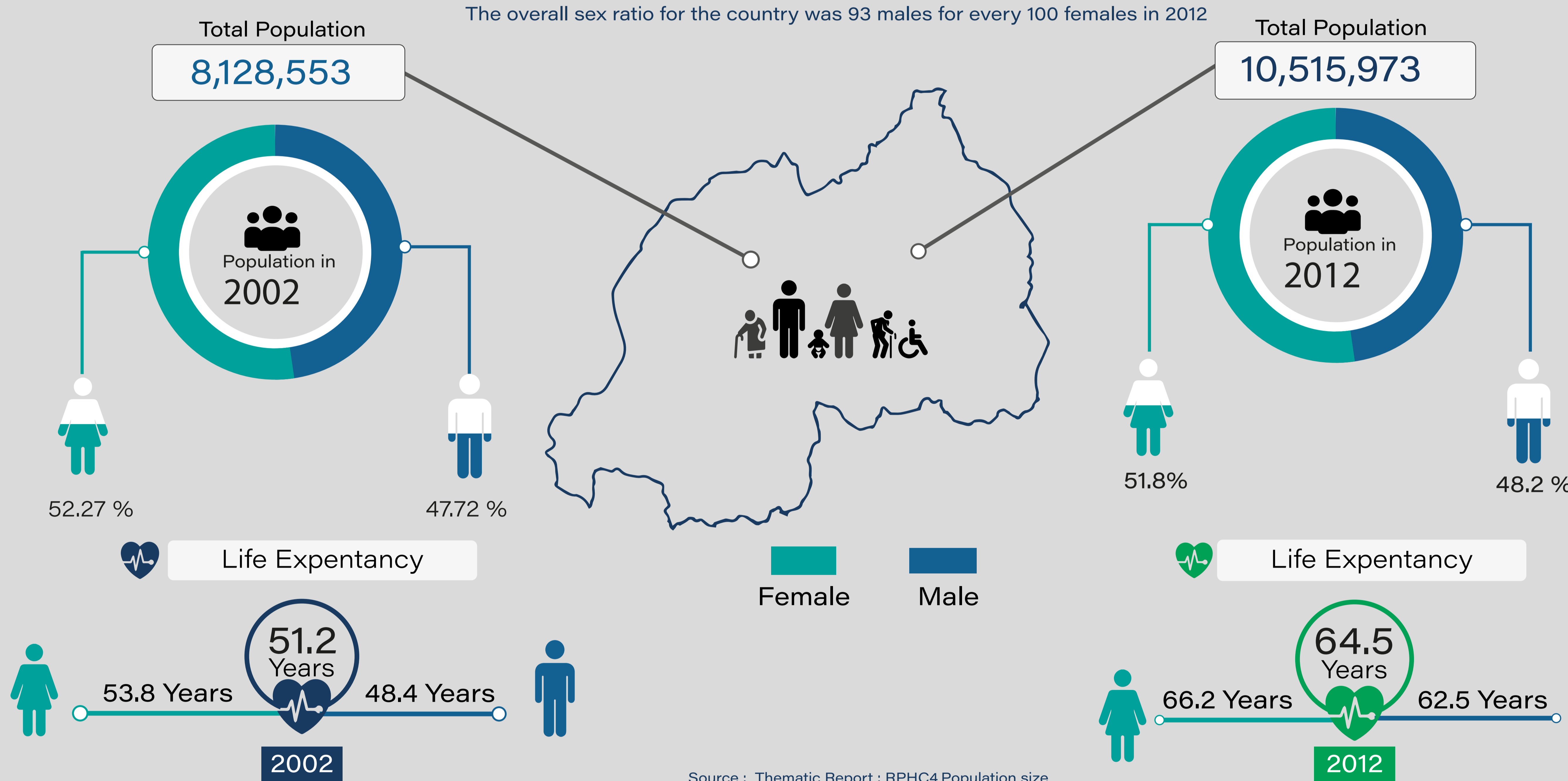


Source : Main indicator report RPHC4

DATA PRESENTATION

Population Size based on 2002 PHC and 2012 PHC

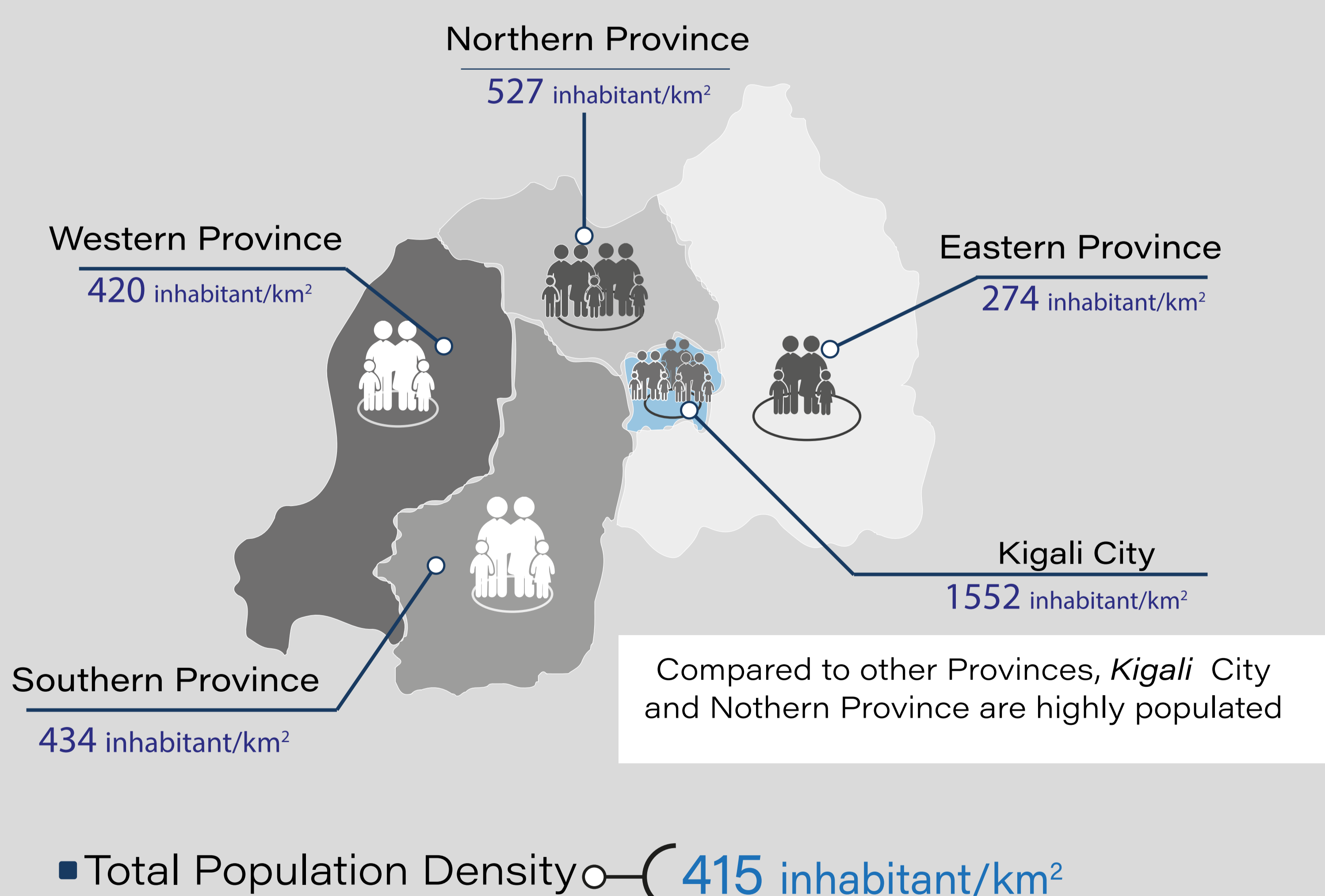
The overall sex ratio for the country was 93 males for every 100 females in 2012



Source : Thematic Report : RPHC4 Population size

Population density - Province level

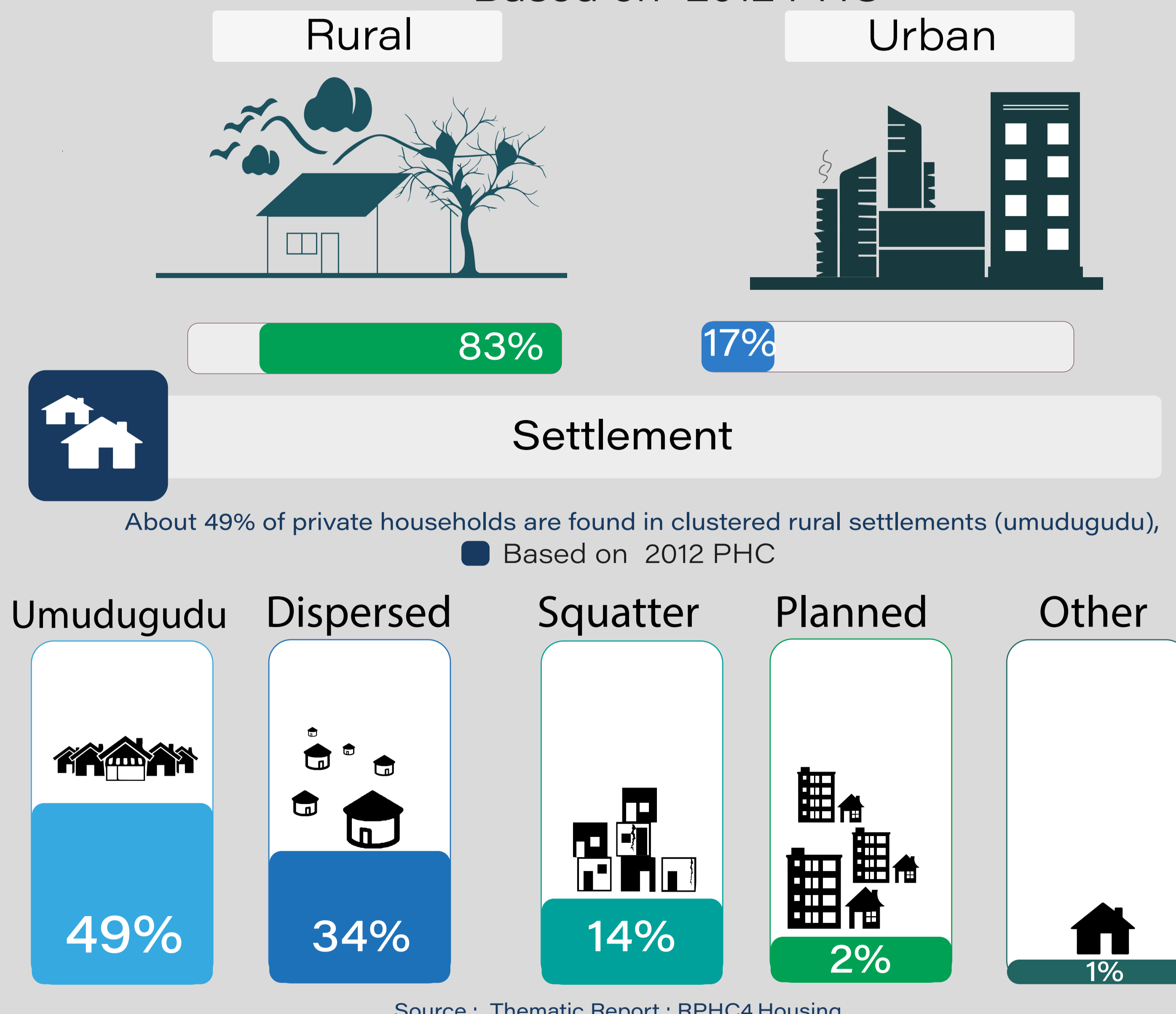
Based on 2012 PHC



Source : Main indicator report RPHC4

The population of Rwanda was largely in Rural

Based on 2012 PHC



Source : Thematic Report : RPHC4 Housing

IMPORTANCE OF PHC

RPHC PROVIDES DETAILS AND AUTHENTIC INFORMATION ON



RWANDA uses Census Data

- To update the national mapping and demographic databases
- Achievement of international development goals.
- To Provide indicators for monitoring poverty reduction strategies

Source : Main indicator report RPHC4
Accessed from: www.statistics.gov.rw