



REPUBLIC OF RWANDA



OCTOBER 2022 INDEX OF INDUSTRIAL PRODUCTION (IIP)

This is the monthly Index of Industrial Production (IIP). Series has been developed by the National Institute of Statistics of Rwanda (NISR) to provide more timely estimates of the broad trends of industrial output.

October 2022

Index of
Industrial
Production
(IIP)

December 2022

NATIONAL INSTITUTE OF STATISTICS OF RWANDA

Monthly Index of Industrial Production- Formal Activity-October 2022

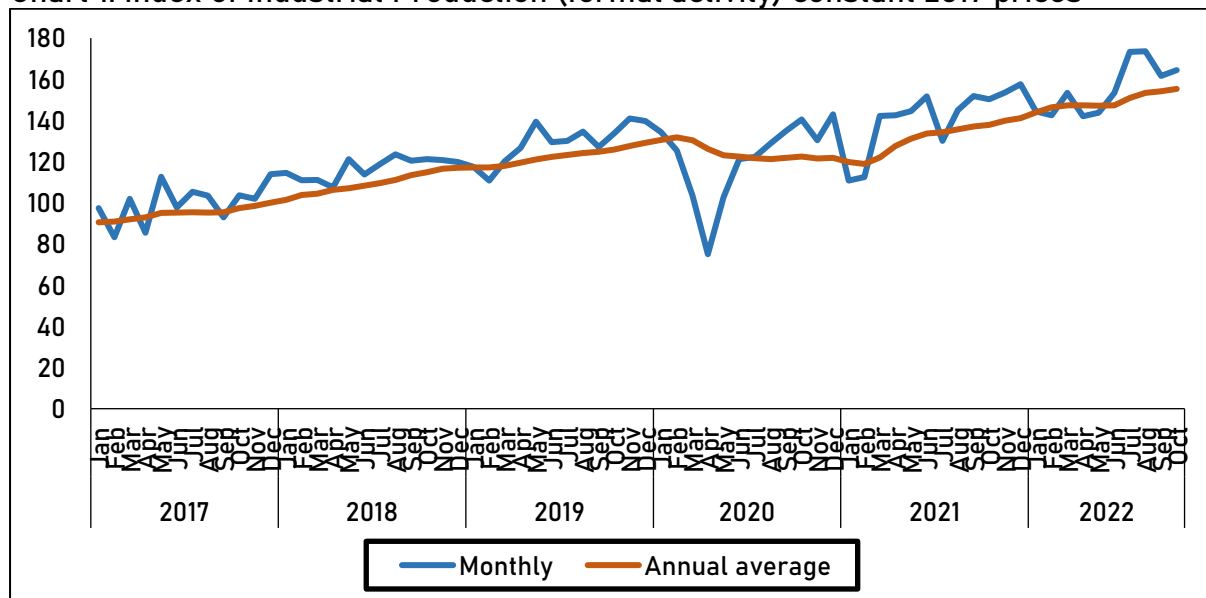
1. Summary

In October 2022, the Index of Industrial Production (IIP) shows that, industrial output (formal sector) increased by 9.4 percent compared to October 2021, against an increase of 12.6 percent on annual average basis.

Activities performed as follows:

- Mining and quarrying increased by 23.6 percent.
- Manufacturing increased by 14.7 percent.
- Electricity increased by 8.6 percent; and
- Water and waste management increased by 18.6 percent

Chart 1: Index of Industrial Production (formal activity) constant 2017 prices



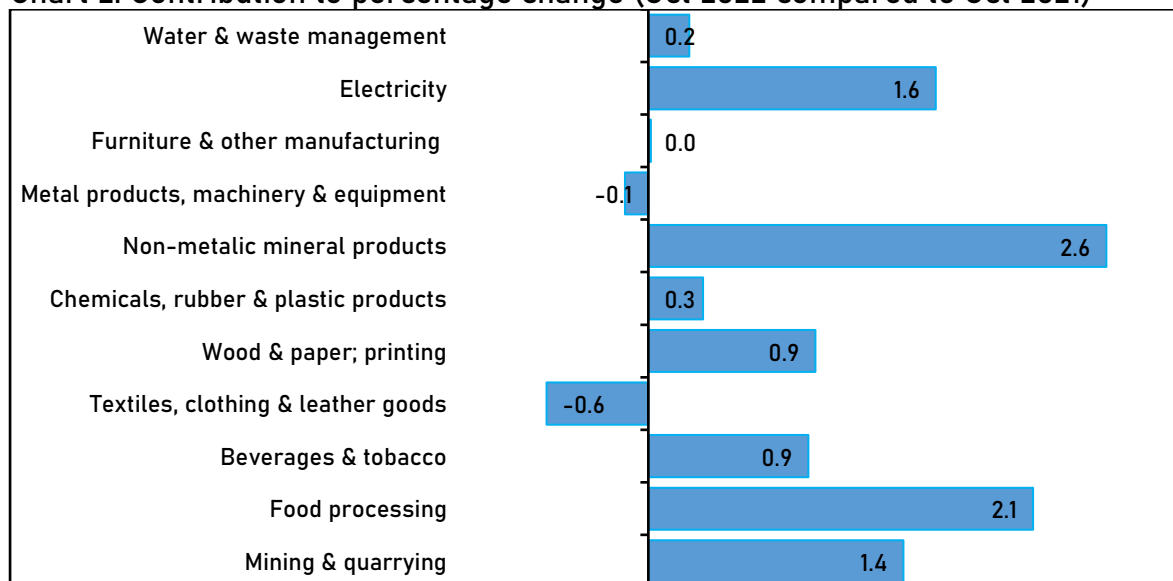
Source: NISR/Index of Industrial Production

2. Details

All activities have contributed positively to the annual change of the overall index, namely mining and quarrying; manufacturing; and utilities.

The manufacturing activity has registered positive changes in many of its components. The positive change in manufacturing activity is mainly due to 8.5 percent increase in food processing and 78.7 percent increase in manufacturing of non-metallic mineral products.

Chart 2: Contribution to percentage change (Oct 2022 compared to Oct 2021)



Source: NISR/ Index of Industrial Production

Table 1: Index of Industrial Production, formal activity, 2017=100, monthly

| | Mining & quarrying | Manufacturing of: | | | | | | | | | Electricity | Water & waste management | General Index |
|-----------|--------------------|-------------------|---------------------|------------------------------------|------------------------|--------------------------------------|-------------------------------|---------------------------------------|---------------------------------|---------------------|-------------|--------------------------|---------------|
| | | Food processing | Beverages & tobacco | Textiles, clothing & leather goods | Wood & paper; printing | Chemicals, rubber & plastic products | Non-metallic mineral products | Metal products, machinery & equipment | Furniture & other manufacturing | Manufacturing Total | | | |
| Jan 2020 | 141.9 | 116.6 | 131.0 | 256.4 | 128.7 | 161.2 | 131.9 | 139.0 | 137.9 | 138.8 | 118.9 | 111.9 | 134.3 |
| Feb 2020 | 125.3 | 98.3 | 123.3 | 302.5 | 117.6 | 159.5 | 125.0 | 131.6 | 97.7 | 125.7 | 116.2 | 101.6 | 125.5 |
| Mar 2020 | 64.0 | 100.8 | 96.0 | 165.5 | 65.3 | 148.4 | 90.3 | 128.6 | 86.8 | 112.7 | 118.2 | 108.0 | 103.5 |
| Apr 2020 | 33.2 | 84.0 | 78.2 | 100.1 | 74.4 | 104.1 | 57.1 | 35.3 | 14.8 | 75.7 | 98.2 | 100.8 | 75.0 |
| May 2020 | 28.1 | 111.0 | 103.3 | 117.1 | 65.9 | 100.6 | 153.7 | 142.7 | 142.7 | 124.7 | 114.7 | 107.2 | 102.8 |
| June 2020 | 70.2 | 133.8 | 120.8 | 123.8 | 137.7 | 138.7 | 128.1 | 161.1 | 154.1 | 146.9 | 115.6 | 114.4 | 121.2 |
| July 2020 | 53.3 | 124.7 | 143.1 | 123.8 | 67.7 | 132.6 | 176.6 | 182.9 | 140.6 | 152.7 | 115.6 | 114.4 | 121.2 |
| Aug 2020 | 41.7 | 101.2 | 145.8 | 271.2 | 143.6 | 186.4 | 154.5 | 218.8 | 134.9 | 153.0 | 126.1 | 125.6 | 128.8 |
| Sept 2020 | 49.8 | 123.1 | 134.3 | 194.0 | 207.3 | 164.6 | 232.7 | 245.9 | 141.3 | 169.6 | 123.1 | 119.2 | 134.9 |
| Oct 2020 | 46.3 | 120.5 | 131.5 | 370.2 | 151.5 | 172.5 | 180.2 | 294.4 | 129.7 | 172.6 | 129.0 | 118.6 | 140.5 |
| Nov 2020 | 49.9 | 102.8 | 128.2 | 358.7 | 142.1 | 190.9 | 181.5 | 182.2 | 107.8 | 141.7 | 127.4 | 114.5 | 130.3 |
| Dec 2020 | 35.7 | 119.3 | 153.7 | 392.7 | 195.4 | 194.9 | 177.7 | 200.9 | 156.5 | 160.0 | 130.5 | 123.9 | 142.9 |
| Jan 2021 | 42.6 | 89.8 | 133.0 | 235.5 | 121.6 | 134.1 | 124.2 | 114.8 | 76.4 | 113.5 | 126.9 | 123.5 | 110.8 |
| Feb 2021 | 38.6 | 89.6 | 122.8 | 248.6 | 138.1 | 160.3 | 133.4 | 153.2 | 120.2 | 121.6 | 116.3 | 110.3 | 112.5 |
| Mar 2021 | 43.6 | 129.5 | 155.1 | 326.8 | 185.2 | 166.5 | 178.6 | 206.0 | 141.6 | 161.2 | 133.8 | 120.1 | 142.2 |
| Apr 2021 | 56.4 | 116.9 | 151.5 | 375.3 | 215.7 | 174.7 | 183.1 | 182.6 | 139.3 | 153.3 | 132.5 | 124.3 | 142.5 |
| May 2021 | 47.2 | 101.9 | 162.4 | 458.7 | 199.2 | 183.0 | 186.7 | 178.3 | 152.9 | 151.1 | 136.0 | 127.8 | 144.6 |
| Jun 2021 | 91.1 | 110.6 | 160.5 | 318.4 | 183.8 | 224.3 | 213.4 | 174.6 | 203.8 | 155.3 | 140.6 | 142.7 | 151.6 |
| July 2021 | 19.7 | 117.3 | 155.9 | 300.6 | 146.9 | 135.9 | 185.9 | 140.0 | 103.3 | 140.0 | 139.3 | 155.4 | 130.0 |
| Aug 2021 | 67.3 | 157.1 | 112.4 | 325.9 | 181.3 | 195.8 | 105.3 | 211.2 | 173.6 | 163.6 | 139.4 | 136.6 | 145.0 |
| Sept 2021 | 103.9 | 163.4 | 122.6 | 350.5 | 189.0 | 182.4 | 107.7 | 185.8 | 146.8 | 163.3 | 142.0 | 124.4 | 151.9 |
| Oct 2021 | 69.8 | 158.8 | 121.7 | 391.2 | 172.2 | 199.3 | 96.3 | 195.6 | 161.0 | 160.5 | 149.2 | 130.8 | 150.3 |
| Nov 2021 | 44.6 | 168.9 | 148.2 | 374.0 | 171.5 | 164.7 | 231.9 | 165.5 | 120.8 | 172.7 | 138.2 | 148.5 | 153.6 |
| Dec 2021 | 44.8 | 173.3 | 155.6 | 366.0 | 169.8 | 181.3 | 219.8 | 173.6 | 144.0 | 178.8 | 141.5 | 150.4 | 157.7 |
| Jan 2022 | 44.4 | 134.0 | 154.9 | 366.5 | 151.9 | 135.2 | 210.1 | 152.9 | 158.0 | 155.2 | 143.4 | 149.2 | 144.4 |
| Feb 2022 | 38.6 | 146.9 | 140.0 | 390.0 | 213.1 | 160.9 | 130.0 | 180.0 | 120.2 | 168.5 | 135.6 | 131.9 | 142.5 |
| Mar 2022 | 30.8 | 156.3 | 155.8 | 367.2 | 218.1 | 213.4 | 128.9 | 178.5 | 154.1 | 176.4 | 154.9 | 149.5 | 153.4 |
| Apr 2022 | 27.8 | 134.2 | 138.1 | 374.1 | 237.8 | 188.8 | 108.3 | 195.7 | 133.1 | 163.6 | 149.6 | 143.5 | 142.1 |
| May 2022 | 67.8 | 132.1 | 146.0 | 269.6 | 155.9 | 196.3 | 167.8 | 153.1 | 139.2 | 140.1 | 153.1 | 146.4 | 143.7 |
| Jun 2022 | 73.7 | 139.0 | 153.1 | 330.6 | 165.4 | 235.1 | 177.5 | 151.3 | 166.6 | 162.6 | 149.9 | 150.1 | 153.3 |
| Jul 2022 | 93.9 | 174.5 | 167.1 | 322.3 | 217.3 | 292.1 | 157.3 | 203.1 | 172.2 | 196.4 | 153.4 | 161.5 | 173.3 |
| Aug 2022 | 90.9 | 178.4 | 134.6 | 358.7 | 259.1 | 228.5 | 181.8 | 228.7 | 244.0 | 201.9 | 160.5 | 156.7 | 173.6 |
| Sept 2022 | 49.3 | 173.9 | 126.1 | 396.8 | 275.3 | 190.9 | 149.4 | 197.8 | 238.3 | 186.4 | 156.6 | 149.2 | 161.6 |
| Oct 2022 | 86.2 | 172.3 | 129.6 | 372.2 | 226.4 | 207.5 | 172.0 | 191.2 | 161.7 | 184.1 | 161.9 | 155.2 | 164.5 |

Source: NISR/ Index of Industrial Production

Table 2: Index of Industrial Production, formal activity, 2017=100, percentage change on same month in previous year

| | Mining & quarrying | Manufacturing of: | | | | | | | | | Manufacturing Total | Electricity | Water & waste management | General Index |
|-----------|--------------------|-------------------|---------------------|------------------------------------|------------------------|--------------------------------------|-------------------------------|---------------------------------------|---------------------------------|--------|---------------------|-------------|--------------------------|---------------|
| | | Food processing | Beverages & tobacco | Textiles, clothing & leather goods | Wood & paper; printing | Chemicals, rubber & plastic products | Non-metallic mineral products | Metal products, machinery & equipment | Furniture & other manufacturing | | | | | |
| Jan 2020 | 101.5% | -9.7% | 10.4% | 28.0% | 3.9% | 10.6% | 32.0% | 25.1% | 42.7% | 7.7% | 3.2% | 1.8% | 14.4% | |
| Feb 2020 | 98.6% | 17.5% | 13.8% | 58.6% | -16.3% | 33.4% | 29.7% | 15.2% | -34.3% | 3.1% | 9.0% | 0.8% | 13.2% | |
| Mar 2020 | 18.7% | 21.7% | -5.9% | -35.6% | -59.8% | 10.7% | -45.6% | -2.9% | -21.5% | -15.0% | 1.7% | -0.8% | -13.9% | |
| Apr 2020 | -59.4% | 37.4% | -38.6% | -49.6% | -58.7% | -40.3% | -49.7% | -71.7% | -88.2% | -43.5% | -13.9% | -3.9% | -40.7% | |
| May2020 | -72.7% | -11.9% | -28.1% | -57.9% | -67.9% | -48.4% | 25.6% | -12.6% | 10.8% | -14.6% | -5.6% | -2.5% | -26.2 | |
| Jun 2020 | 34.5% | 22.2% | 16.9% | -49.4% | -20.8% | -9.4% | -16.9% | -36.6% | 8.6% | -8.3% | 0.2% | 4.4% | -6.4% | |
| Jul 2020 | 18.3% | 9.8% | -4.7% | -58.3% | -56.5% | -16.6% | 19.0% | 21.5% | -11.8% | 8.1% | 1.6% | 5.1% | -6.0% | |
| Aug2020 | -48.9% | -22.9% | 2.8% | -8.1% | 4.7% | 16.3% | 23.4% | 42.3% | 6.0% | 3.4% | 2.4% | 6.5% | -4.3% | |
| Sep 2020 | -49.3% | 7.0% | 13.0% | -30.0% | 62.0% | 16.4% | 66.1% | 50.2% | 17.0% | 21.5% | 2.6% | 12.3% | 6.1% | |
| Oct 2020 | -62.0% | -8.7% | 10.1% | 36.8% | 9.5% | 17.7% | 56.1% | 93.3% | 9.5% | 20.1% | 6.2% | 7.4% | 5.0% | |
| Nov 020 | -72.2% | -24.7% | 15.5% | 20.6% | 39.3% | 15.7% | 34.3% | 33.7% | -12.5% | -0.4% | 9.3% | 8.4% | -7.6% | |
| Dec 2020 | -72.9% | -0.3% | 6.2% | 4.9% | 45.8% | 21.3% | 74.1% | 51.6% | 17.9% | 12.0% | 8.2% | 17.8% | 2.3% | |
| Jan 2021 | -69.9% | -23.0% | 1.5% | -8.1% | -5.5% | -16.9% | -5.8% | -17.4% | -44.6% | -18.3% | 6.7% | 10.4% | -17.5% | |
| Feb 2021 | -69.2% | -8.9% | -0.4% | -17.8% | 17.5% | 0.5% | 6.7% | 16.4% | 23.1% | -3.3% | 0.1% | 8.6% | -10.3% | |
| Mar 2021 | -32.0% | 28.4% | 61.5% | 97.5% | 183.6% | 12.2% | 97.8% | 60.2% | 63.2% | 43.0% | 13.1% | 11.2% | 37.3% | |
| Apr 2021 | 69.7% | 39.1% | 93.8% | 274.8% | 189.9% | 67.8% | 220.6% | 417.7% | 843.7% | 102.5% | 35.0% | 23.3% | 90.0% | |
| May2021 | 68.0% | -8.2% | 57.3% | 291.8% | 202.1% | 82.0% | 21.5% | 25.0% | 7.1% | 21.2% | 18.6% | 19.2% | 40.7% | |
| Jun 2021 | 29.7% | -17.4% | 32.8% | 157.2% | 33.5% | 61.7% | 66.6% | 8.4% | 32.3% | 5.8% | 21.6% | 24.7% | 25.1% | |
| July 2021 | -63.1% | -5.9% | 9.0% | 185.7% | 117.1% | 2.5% | 5.3% | -23.4% | -26.5% | -8.3% | 12.1% | 24.9% | 6.2% | |
| Aug 2021 | 41.6% | 48.8% | -20.9% | 11.9% | 30.2% | 39.8% | -15.2% | -1.3% | 25.2% | 16.7% | 11.7% | 8.5% | 14.8% | |
| Sep 2021 | 108.8% | 32.8% | -8.7% | 80.6% | -8.8% | 10.8% | -53.7% | -24.5% | 3.9% | -3.7% | 15.4% | 4.3% | 12.6% | |
| Oct 2021 | 50.6% | 31.8% | -7.5% | 5.7% | 13.7% | 15.6% | -46.6% | -33.6% | 24.2% | -7.0% | 15.6% | 10.3% | 7.0% | |
| Nov 2021 | -10.5% | 64.3% | 15.6% | 4.2% | 20.7% | -13.7% | 27.7% | -9.2% | 12.1% | 21.9% | 8.5% | 29.7% | 17.9 | |
| Dec 2021 | 25.6% | 45.2% | 1.2% | -6.8% | -13.1% | -7.0% | 23.7% | -13.6% | -8.0% | 11.8% | 8.4% | 21.4% | 10.3% | |
| Jan 2022 | 4.1% | 49.2% | 16.5% | 55.6% | 24.9% | 0.9% | 69.1% | 33.2% | 106.8% | 36.8% | 13.0% | 20.8% | 30.3% | |
| Feb 2022 | 0,0% | 64,0% | 14,0% | 56,9% | 54,3% | 0,4% | -2,6% | 17,5% | 0,0% | 38,6% | 16,6% | 19,6% | 26,6% | |
| Mar 2022 | -29.4% | 20.7% | 0.5% | 12.3% | 17.8% | 28.2% | -27.8% | -13.3% | 8.8% | 9.4% | 15.8% | 24.5% | 7.9% | |
| Apr 2022 | -50.8% | 14.8% | -8.8% | -0.3% | 10.2% | 8.0% | -40.9% | 7.2% | -4.5% | 6.7% | 12.9% | 15.4% | -0.3% | |
| May 2022 | 43.6% | 29.6% | -10.1% | -41.2% | -21.7% | 7.2% | -10.1% | -14.2% | -9.0% | -7.3% | 12.6% | 14.5% | -0.6% | |
| Jun 2022 | -19.1% | 25.7% | -4.6% | 3.8% | -10.0% | 4.8% | -16.8% | -13.4% | -18.3% | 4.7% | 6.6% | 5.2% | 1.1% | |
| Jul 2022 | 377.2% | 48.7% | 7.2% | 7.2% | 47.9% | 114.8% | -15.4% | 45.1% | 66.6% | 40.3% | 10.1% | 3.9% | 33.3% | |
| Aug 2022 | 35.2% | 13.6% | 19.7% | 10.0% | 42.9% | 16.7% | 72.7% | 8.3% | 40.5% | 23.5% | 15.1% | 14.7% | 19.7% | |
| Sep 2022 | -52.6% | 6.4% | 2.9% | 13.2% | 45.7% | 4.6% | 38.7% | 6.5% | 62.4% | 14.2% | 10.3% | 20.0% | 6.4% | |
| Oct 2022 | 23.6% | 8.5% | 6.5% | -4.9% | 31.4% | 4.1% | 78.7% | -2.2% | 0.4% | 14.7% | 8.6% | 18.6% | 9.4% | |

Source: NISR/ Index of Industrial Production

Table 3: Index of Industrial Production, formal activity, 2017=100, annual average

| | Mining & quarrying | Manufacturing of: | | | | | | | | | Electricity | Water & waste management | General Index |
|-----------|--------------------|-------------------|---------------------|------------------------------------|------------------------|--------------------------------------|-------------------------------|---------------------------------------|---------------------------------|---------------------|-------------|--------------------------|---------------|
| | | Food processing | Beverages & tobacco | Textiles, clothing & leather goods | Wood & paper; printing | Chemicals, rubber & plastic products | Non-metallic mineral products | Metal products, machinery & equipment | Furniture & other manufacturing | Manufacturing Total | | | |
| Jan 2020 | 97.8 | 123.5 | 128.7 | 266.1 | 148.8 | 155.8 | 129.2 | 151.4 | 132.9 | 140.9 | 118.1 | 109.1 | 130.6 |
| Feb 2020 | 103.0 | 121.8 | 129.9 | 275.4 | 146.9 | 159.2 | 131.6 | 152.8 | 128.7 | 141.2 | 118.9 | 109.2 | 131.8 |
| Mar 2020 | 103.9 | 119.5 | 129.4 | 267.8 | 138.8 | 160.4 | 125.3 | 152.5 | 126.7 | 139.6 | 119.0 | 109.1 | 130.4 |
| Apr 2020 | 99.8 | 115.3 | 125.3 | 259.6 | 130.0 | 154.5 | 120.6 | 145.1 | 117.5 | 134.7 | 117.7 | 108.8 | 126.1 |
| May 2020 | 93.6 | 114.0 | 121.9 | 246.2 | 118.4 | 146.6 | 123.2 | 143.4 | 118.7 | 133.0 | 117.1 | 108.6 | 123.1 |
| Jun 2020 | 95.1 | 116.0 | 119.9 | 236.1 | 115.4 | 145.4 | 121.0 | 135.6 | 119.7 | 131.8 | 117.2 | 109.0 | 122.4 |
| July 2020 | 94.1 | 117.0 | 119.3 | 223.8 | 108.0 | 143.2 | 123.4 | 138.3 | 118.1 | 132.8 | 117.3 | 109.5 | 121.7 |
| Aug 2020 | 90.8 | 114.5 | 119.6 | 221.8 | 108.6 | 145.4 | 125.8 | 143.7 | 118.7 | 132.2 | 117.6 | 110.1 | 121.3 |
| Sept 2020 | 86.7 | 115.1 | 120.9 | 214.9 | 115.2 | 147.4 | 133.6 | 150.6 | 120.5 | 135.7 | 117.8 | 111.2 | 121.9 |
| Oct 2020 | 80.4 | 114.2 | 121.9 | 223.2 | 116.3 | 149.5 | 138.9 | 162.4 | 119.7 | 138.1 | 118.5 | 111.9 | 122.5 |
| Nov 2020 | 69.6 | 111.4 | 123.4 | 228.3 | 119.6 | 151.7 | 142.8 | 166.2 | 118.4 | 138.1 | 119.4 | 112.6 | 121.6 |
| Dec 2020 | 61.6 | 111.3 | 124.1 | 229.8 | 124.7 | 154.5 | 149.1 | 171.9 | 120.4 | 139.5 | 120.2 | 114.2 | 121.9 |
| Jan 2021 | 53.3 | 109.1 | 124.3 | 228.0 | 124.2 | 152.3 | 148.5 | 169.9 | 115.3 | 137.4 | 120.9 | 115.1 | 119.9 |
| Feb 2021 | 46.1 | 108.4 | 124.2 | 223.6 | 125.9 | 152.3 | 149.2 | 171.7 | 117.1 | 137.0 | 120.9 | 115.9 | 118.8 |
| Mar 2021 | 44.4 | 110.8 | 129.1 | 237.0 | 135.9 | 153.8 | 156.5 | 178.2 | 121.7 | 141.1 | 122.2 | 116.9 | 122.0 |
| Apr 2021 | 46.3 | 113.5 | 135.3 | 259.9 | 147.6 | 159.7 | 167.0 | 190.4 | 132.1 | 147.5 | 125.0 | 118.8 | 127.7 |
| May 2021 | 47.9 | 112.7 | 140.2 | 288.4 | 158.7 | 166.6 | 169.8 | 193.4 | 132.9 | 149.7 | 126.8 | 120.6 | 131.1 |
| Jun 2021 | 49.7 | 110.8 | 143.5 | 304.6 | 162.6 | 173.7 | 176.9 | 194.5 | 137.1 | 150.5 | 128.9 | 122.9 | 133.7 |
| July 2021 | 46.9 | 110.2 | 144.6 | 320.9 | 169.2 | 174.0 | 177.7 | 191.0 | 134.0 | 149.4 | 130.1 | 125.5 | 134.3 |
| Aug 2021 | 49.0 | 114.9 | 141.8 | 325.5 | 172.3 | 174.8 | 173.6 | 190.3 | 137.2 | 150.3 | 131.2 | 126.4 | 135.7 |
| Sep 2021 | 53.5 | 118.2 | 140.8 | 338.5 | 170.8 | 176.3 | 163.2 | 185.3 | 137.7 | 149.7 | 132.8 | 126.8 | 137.1 |
| Oct 2021 | 55.5 | 121.4 | 140.0 | 340.2 | 172.5 | 178.5 | 156.2 | 177.1 | 140.3 | 148.7 | 134.5 | 127.9 | 137.9 |
| Nov 2021 | 55.0 | 126.9 | 141.6 | 341.5 | 175.0 | 176.3 | 160.4 | 175.7 | 141.4 | 151.3 | 135.4 | 130.7 | 139.8 |
| Dec 2021 | 55.8 | 131.4 | 141.8 | 339.3 | 172.9 | 175.2 | 163.9 | 173.4 | 140.3 | 152.9 | 136.3 | 132.9 | 141.1 |
| Jan 2022 | 55.9 | 135.1 | 143.6 | 350.2 | 175.4 | 175.3 | 171.0 | 176.6 | 147.1 | 156.4 | 137.7 | 135.0 | 143.9 |
| Feb 2022 | 55.9 | 139.9 | 145.1 | 362.0 | 181.6 | 175.3 | 170.7 | 178.8 | 147.1 | 160.3 | 139.3 | 136.8 | 146.4 |
| Mar 2022 | 54.9 | 142.1 | 145.1 | 365.4 | 184.4 | 179.3 | 166.6 | 176.6 | 148.2 | 161.6 | 141.1 | 139.3 | 161.6 |
| Apr 2022 | 52.5 | 143.6 | 144.0 | 365.3 | 186.2 | 180.4 | 160.4 | 177.6 | 147.6 | 162.4 | 142.5 | 140.9 | 147.3 |
| May 2022 | 54.2 | 146.1 | 142.6 | 349.5 | 182.6 | 181.5 | 158.8 | 175.5 | 146.5 | 161.5 | 143.9 | 142.4 | 147.2 |
| Jun 2022 | 52.8 | 148.4 | 142.0 | 350.5 | 181.1 | 182.4 | 155.8 | 173.6 | 143.4 | 162.1 | 144.7 | 143.1 | 147.3 |
| Jul 2022 | 58.9 | 153.2 | 143.0 | 352.3 | 186.9 | 195.4 | 153.4 | 178.9 | 149.1 | 166.8 | 145.9 | 143.6 | 150.9 |
| Aug 2022 | 60.9 | 155.0 | 144.8 | 355.0 | 193.4 | 198.2 | 159.8 | 180.3 | 155.0 | 170.0 | 147.6 | 145.2 | 153.3 |
| Sept 2022 | 56.4 | 155.9 | 145.1 | 358.9 | 200.6 | 198.9 | 163.2 | 181.3 | 162.6 | 171.9 | 148.8 | 147.3 | 154.1 |
| Oct 2022 | 57.7 | 157.0 | 145.8 | 357.3 | 205.1 | 199.5 | 169.6 | 181.0 | 162.7 | 173.9 | 149.9 | 149.3 | 155.3 |

Source: NISR/ Index of Industrial Production

Table 4: Linking factors between old base and new base (linking year = 2017)

| | Mining & quarrying | Manufacturing of: | | | | | | | | Electricity | Water & waste management | General Index | |
|-----------------|--------------------|-------------------|---------------------|------------------------------------|------------------------|--------------------------------------|-------------------------------|---------------------------------------|---------------------------------|-------------|--------------------------|---------------|---------------------|
| | | Food processing | Beverages & tobacco | Textiles, clothing & leather goods | Wood & paper; printing | Chemicals, rubber & plastic products | Non-metallic mineral products | Metal products, machinery & equipment | Furniture & other manufacturing | | | | Manufacturing Total |
| Linking factors | 1.29 | 1.28 | 1.00 | 2.25 | 1.18 | 1.62 | 1.95 | 1.69 | 1.23 | 1.29 | 1.32 | 1.14 | 1.29 |

Source: NISR/Index of Industrial Production

Note:

- The series from 2017 are based on the new weights.
- For the years before 2017, the growth rates of old series are preserved by dividing the old series by the above linking factors.

Notes

The Index of Industrial Production (IIP) is a statistical instrument used to monitor the monthly trends in output of industrial activities. It is developed based on a range of short term (monthly) indicators of economic activity.

The IIP series were developed since 2017 and the first publication was done in June 2019. In this publication a series from January 2011 have been compiled and availed to the public. Moreover, figures in this publication are the results of the 2017 rebasing exercise explained below in this note.

The IIP in this statistical release relates to the activity of businesses in the formal sector in Rwanda, defined as those registered with the tax authorities. The IIP series is entirely consistent with the quarterly estimates of Gross Value Added published by NISR, which still provide the most comprehensive and detailed assessment of economic activity.

The scope of the IIP as recommended by the United Nations Statistical Office (UNSO) includes mining and quarrying, manufacturing, construction, electricity, gas and water production and supply. But due to constraints of data availability, the IIP compiled in Rwanda has excluded construction activities.

2017 Rebasing

The National Institute of Statistics of Rwanda finalised new series that are based on the 2017 weights replacing old series based on 2014 weights. The International best practice recommends doing it at least once in five years but in Rwanda it is compiled every three years due to the availability of information collected at a higher frequency. Note that the series from 2017 are based on the 2017 weights. For the years before 2017, the growth rates of old series are preserved by dividing the published indices by the linking factors found in the above table 4.

The IIP is produced based on monthly indicators of the volume of economic activity for eleven Rwanda Classification of Products by Activity (RCPA). These are weighted together based on the gross value added in the reference year for the series (currently, 2017), consistent with the estimates of published value added within the Gross Domestic Product series, see table 5.

The correspondence table between RCPA and ISIC (International Standard Industrial Classification) Revision 4 is shown in Table 6.

Table 5: 2017 Gross Value Added

| RCPA | Activity | Gross Value Added (RWF, billions) | Percentage of total GVA |
|------|--------------------------------------------------------|-----------------------------------|-------------------------|
| B | Mining & quarrying | 57.4 | 13.0% |
| CA | Manufacturing of food processing | 105.8 | 23.9% |
| CB | Manufacturing of beverages & tobacco | 75.3 | 17.0% |
| CC | Manufacturing of textiles, clothing & leather goods | 19.9 | 4.5% |
| CD | Manufacturing of wood & paper; printing | 11.5 | 2.6% |
| CE | Manufacturing of chemicals, rubber & plastic products | 25.0 | 5.7% |
| CF | Manufacturing of non-metallic mineral products | 22.4 | 5.1% |
| | Manufacturing of metal products, machinery & equipment | 20.0 | 4.5% |
| CG | | | |
| CH | Furniture & other manufacturing | 15.0 | 3.4% |
| D | Electricity | 83.6 | 18.9% |
| E | Water & waste management | 6.2 | 1.4% |
| | Total | 442.1 | 100.0% |

Source: NISR/ Index of Industrial Production

Table 6: Matching table between Rwanda Products Classification by Activity (RPCA) and International Standard Industrial Classification Revision 4 (ISIC Rev 4)

| RPCA (Rwanda Classification of Products by Activity) | | | ISIC Rev.4 (here R stands for Rwanda) | | |
|------------------------------------------------------|-------|--------------------------------------------------------|---------------------------------------|-------|---------------------------------------------------------------------------------------------------------------------------------|
| Code | Level | Description | Code | Code1 | Description |
| B | 2 | Mining and quarrying | R | RB | Mining and quarrying |
| CA | 4 | Manufacturing of food | RC | RC10 | Manufacture of food products |
| CB | 4 | Manufacturing of beverages & tobacco | RC | RC11 | Manufacture of beverages |
| | | | RC | RC12 | Manufacture of tobacco products |
| CC | 4 | Manufacturing of textiles, clothing & leather goods | RC | RC13 | Manufacture of textiles |
| | | | RC | RC14 | Manufacture of wearing apparel |
| | | | RC | RC15 | Manufacture of leather and related products |
| CD | 4 | Manufacturing of wood & paper; printing | RC | RC16 | Manufacture of wood and of products of wood and cork, except furniture; Manufacture of articles of straw and plaiting materials |
| CD | 4 | Manufacturing of wood & paper; printing | RC | RC17 | Manufacture of paper and paper products |
| | | | RC | RC18 | Printing and reproduction of recorded media |
| CE | 4 | Manufacturing of chemicals, rubber & plastic products | RC | RC19 | Manufacture of coke and refined petroleum products |
| | | | RC | RC20 | Manufacture of chemicals and chemical products |
| | | | RC | RC21 | Manufacture of pharmaceuticals, medicinal chemical and botanical products |
| | | | RC | RC22 | Manufacture of rubber and plastics products |
| CF | 4 | Manufacturing of non-metallic mineral products | RC | RC23 | Manufacture of other non-metallic mineral products |
| CG | 4 | Manufacturing of metal products, machinery & equipment | RC | RC24 | Manufacture of basic metals |
| | | | RC | RC25 | Manufacture of fabricated metal products, except machinery and equipment |
| | | | RC | RC26 | Manufacture of computer, electronic and optical products |
| | | | RC | RC27 | Manufacture of electrical equipment |
| | | | RC | RC28 | Manufacture of machinery and equipment n.e.c. |
| | | | RC | RC29 | Manufacture of motor vehicles, trailers and semi-trailers |
| | | | RC | RC30 | Manufacture of other transport equipment |
| CH | 4 | Furniture & other manufacturing | RC | RC31 | Manufacture of furniture |
| | | | RC | RC32 | Other manufacturing |
| | | | RC | RC33 | Repair and installation of machinery and equipment |
| D | 2 | Electricity | RD | RD35 | Electricity, gas, steam and air conditioning supply |
| E | 2 | Water & waste management | RE | RE36 | Water collection, treatment and supply |

Source: NISR/ Index of Industrial Production

For more information, please contact:

Contacts:

NATIONAL INSTITUTE OF STATISTICS OF RWANDA (NISR),

P.O. BOX 6139 Kigali,

Tel.: (+250) 788383103

Web site: www.statistics.gov.rw;

E-mail: info@statistics.gov.rw;