



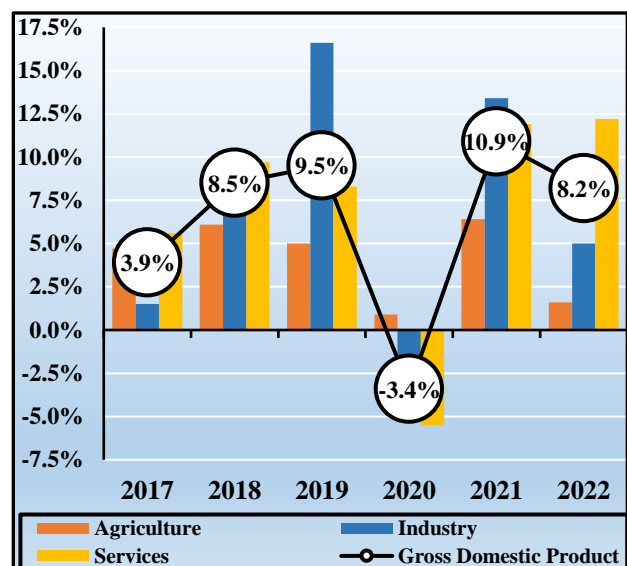
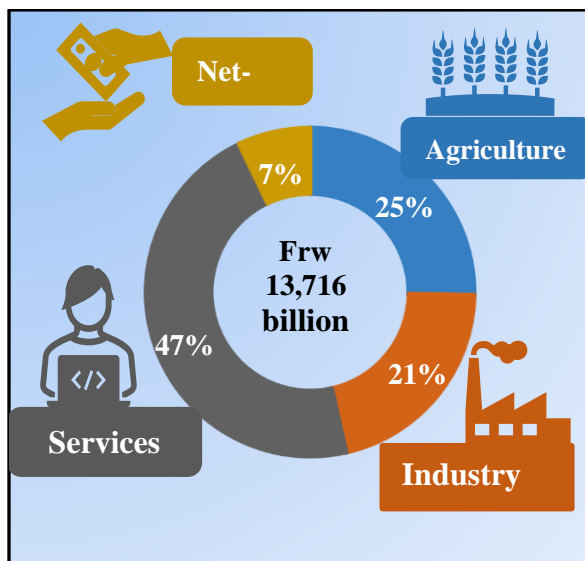
REPUBLIC OF RWANDA



Gross Domestic Product - 2022

I. Gross Domestic Product and its structure

In 2022, GDP at current market prices was estimated at Frw 13,716 billion, up from Frw 10,930 billion in 2021. Services sector contributed 47 percent of GDP, Agriculture sector contributed 25 percent of the GDP, and Industry sector contributed 21 percent of GDP while 7 percent was attributed to adjustment for taxes less subsidies on products.



II. Growth rate by kind of activity

In 2022, the economy continued to grow throughout the year. GDP growth was 7.9 percent in the first quarter, 7.5 percent in the second quarter, 10 percent in the third quarter and 7.3 percent in the fourth quarter. This led the year 2022 to grow by 8.2 percent when compared to 2021.

In agriculture, the growth was 2 percent and contributed 0.4 percentage points to the overall growth. Food crops decreased by 1 percent; export crops grew by 4 percent.

In industry, the growth was 5 percent and contributed 0.9 percentage points to the overall growth. This growth is attributed to the growth of 11 percent in manufacturing activities, and 15 percent growth in mining & quarrying activities. This growth in industry was however affected by the decrease of 6 percent in construction activities.

The growth in manufacturing was boosted by an increase of 13 percent in food processing activities; 9 percent increase in beverages & tobacco; 21 percent increase in Textiles, clothing & leather goods;

14 percent increase in chemicals rubber & plastic products and 7 percent increase in metal products, machinery & equipment.

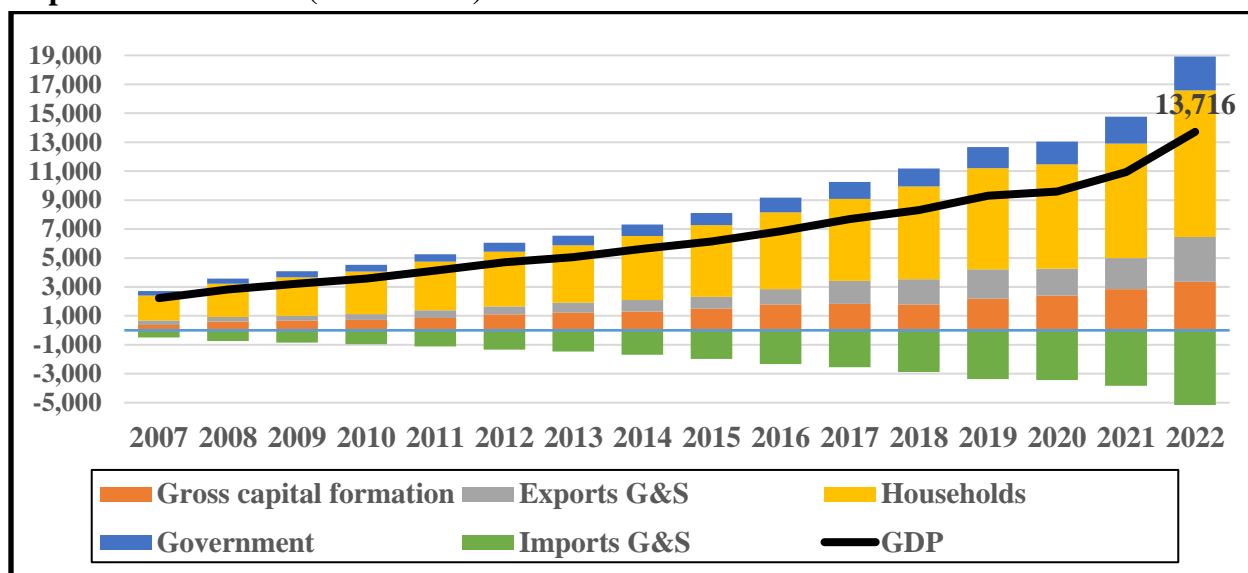
In Services, the overall growth in service sector was 12 percent and contributed 5.7 percentage points to overall growth. Within services, activities performed as follows: wholesale & retail trade activities increased by 14 percent, Hotels & restaurants increased by 87 percent, Transport activities increased by 22 percent, Financial services increased by 10 percent and Information & communication increased by 20 percent. On the other hand, public administration services increased by 10 percent, education services increased by 17 percent while human health activities increased by 8 percent.

III. Expenditure GDP

In 2022, private final consumption expenditure was 74 percent of GDP while government final consumption expenditure was 17 percent. Gross capital formation was estimated at 24 percent of GDP.

In this year, at constant 2017 prices, imports of goods & services increased by 30 percent; exports of goods & services increased by 16 percent.

Expenditure on GDP (Billion Frw)



IV. GDP Deflator

Based on 2017=100, the implied GDP deflator increased from 112 in 2021 to 129 in 2022.

V. GDP Per Capita

In the year 2022, GDP per Head in current US Dollars was estimated at 1004 from 853 in the previous year of 2021.

For more details, visit www.statistics.gov.rw

Table A
Macro-economic aggregates

	2007	2008	2009	2010	2011	2012	2013	2014	2015	2016	2017	2018	2019	2020	2021	2022
Gross Domestic Product (Rwf billions)																
GDP at current prices	2,226	2,833	3,225	3,571	4,133	4,702	5,057	5,623	6,150	6,845	7,694	8,298	9,305	9,596	10,930	13,716
<i>Growth rate</i>	21.6%	27.2%	13.8%	10.8%	15.7%	13.8%	7.5%	11.2%	9.4%	11.3%	12.4%	7.8%	12.1%	3.1%	13.9%	25.5%
GDP at constant 2017 prices	3,882	4,315	4,585	4,921	5,313	5,772	6,045	6,417	6,986	7,403	7,694	8,351	9,142	8,833	9,794	10,593
<i>Growth rate</i>	7.6%	11.2%	6.2%	7.3%	8.0%	8.6%	4.7%	6.2%	8.9%	6.0%	3.9%	8.5%	9.5%	-3.4%	10.9%	8.2%
Implicit GDP deflator	57	66	70	73	78	81	84	88	88	92	100	99	102	109	112	129
<i>Growth rate</i>	12.9%	14.5%	7.1%	3.2%	7.2%	4.7%	2.7%	4.7%	0.5%	5.0%	8.1%	-0.6%	2.4%	6.7%	2.7%	16.0%
GDP per head (in '000 Rwf)	241	299	332	358	404	449	471	511	546	594	652	686	752	758	844	1,035
GDP per head (in current US dollars)	441	547	584	615	674	730	728	749	759	754	784	797	836	803	853	1,004
Proportions of GDP																
Total final consumption expenditure																
<i>Government</i>	14%	12%	13%	13%	12%	13%	13%	14%	14%	15%	15%	15%	16%	16%	17%	17%
<i>Private (includes changes in stock)</i>	78%	81%	82%	82%	82%	80%	78%	79%	81%	77%	74%	77%	75%	75%	73%	74%
Gross capital formation	17%	21%	21%	21%	21%	23%	24%	23%	24%	26%	24%	21%	24%	25%	26%	25%
Resource balance	-9%	-15%	-16%	-16%	-14%	-17%	-16%	-16%	-19%	-19%	-13%	-14%	-14%	-17%	-16%	-15%
Value added by																
<i>Agriculture</i>	26%	25%	25%	24%	24%	25%	25%	25%	24%	25%	26%	25%	24%	27%	24%	25%
<i>Industry</i>	17%	16%	16%	16%	18%	18%	18%	18%	18%	17%	17%	17%	19%	19%	20%	21%
<i>Services</i>	48%	49%	50%	50%	48%	49%	50%	49%	50%	49%	48%	50%	49%	47%	48%	47%
<i>Adjustments</i>	9%	10%	9%	10%	10%	8%	8%	9%	9%	9%	9%	8%	9%	8%	8%	7%
National income and expenditure (Rwf billions)																
Gross Domestic Product at current prices	2,226	2,833	3,225	3,571	4,133	4,702	5,057	5,623	6,150	6,845	7,694	8,298	9,305	9,596	10,930	13,716
Factor income from abroad, net	-9	-20	-21	-30	-34	-63	-85	-129	-117	-188	-242	-299	-313	-223	-224	-288
Gross National Income	2,217	2,812	3,204	3,542	4,099	4,639	4,972	5,494	6,034	6,658	7,452	7,999	8,992	9,373	10,706	13,428
Current transfers, net	252	284	341	339	479	388	479	395	267	271	496	575	527	583	747	1,009
Gross National Disposable Income	2,469	3,096	3,545	3,880	4,578	5,027	5,451	5,888	6,301	6,928	7,948	8,574	9,519	9,956	11,453	14,437
Less Final consumption expenditure	-2,045	-2,655	-3,065	-3,402	-3,864	-4,385	-4,616	-5,226	-5,812	-6,332	-6,831	-7,650	-8,456	-8,772	-9,780	-12,470
Gross National Saving	424	441	479	478	713	643	835	663	489	596	1,117	924	1,063	1,184	1,673	1,966
Less Gross capital formation	-374	-605	-678	-733	-864	-1,096	-1,235	-1,306	-1,491	-1,789	-1,834	-1,774	-2,183	-2,410	-2,856	-3,359
Net lending to the rest of the world	51	-163	-198	-255	-150	-453	-400	-643	-1,002	-1,193	-717	-850	-1,120	-1,227	-1,184	-1,393
Memorandum items																
Total population (millions)	9.2	9.5	9.7	10.0	10.2	10.5	10.7	11.0	11.3	11.5	11.8	12.1	12.4	12.7	13.0	13.3
<i>Growth rate</i>	2.6%	2.6%	2.6%	2.6%	2.6%	2.6%	2.4%	2.4%	2.4%	2.4%	2.4%	2.4%	2.4%	2.3%	2.3%	2.3%
Exchange rate: Rwf per US dollar	547	547	568	583	600	614	647	683	720	787	832	861	899	943	989	1,031
<i>Growth rate</i>	-0.9%	0.0%	3.9%	2.6%	3.0%	2.3%	5.3%	5.6%	5.4%	9.4%	5.6%	3.6%	4.5%	4.9%	4.8%	4.2%

Source: National Institute of Statistics of Rwanda
March 16, 2023

Table 1
Gross Domestic product by Kind of Activity
at current prices
(in billion Rwf)

Activity description	ISIC4	2007	2008	2009	2010	2011	2012	2013	2014	2015	2016	2017	2018	2019	2020	2021	2022
GROSS DOMESTIC PRODUCT (GDP)		2,226	2,833	3,225	3,571	4,133	4,702	5,057	5,623	6,150	6,845	7,694	8,298	9,305	9,596	10,930	13,716
AGRICULTURE, FORESTRY & FISHING	A	580	702	818	868	985	1,165	1,260	1,388	1,475	1,722	2,027	2,044	2,193	2,558	2,633	3,415
Food crops	AA	311	350	437	457	534	652	739	823	874	1,065	1,297	1,156	1,245	1,513	1,450	1,879
Export crops	AB	41	55	53	64	67	86	68	87	89	105	138	138	115	126	133	209
Livestock & livestock products	AC	53	67	80	84	94	106	117	129	144	166	186	212	254	312	360	457
Forestry	AD	169	220	236	250	274	303	315	327	343	360	378	504	545	576	649	816
Fishing	AE	7	10	11	13	16	18	21	22	25	26	29	33	34	31	41	55
INDUSTRY	B-F	373	461	506	583	751	857	891	987	1,073	1,153	1,330	1,438	1,753	1,787	2,220	2,913
Mining & quarrying	B	35	41	27	37	83	78	100	119	106	110	165	185	135	121	307	388
TOTAL MANUFACTURING	C	181	225	257	295	346	389	345	383	420	459	591	633	778	839	1,003	1,359
<i>Of which: Food</i>	<i>CA</i>	<i>36</i>	<i>48</i>	<i>60</i>	<i>69</i>	<i>82</i>	<i>90</i>	<i>96</i>	<i>105</i>	<i>108</i>	<i>124</i>	<i>210</i>	<i>186</i>	<i>256</i>	<i>283</i>	<i>341</i>	<i>575</i>
<i>Beverages & tobacco</i>	<i>CB</i>	<i>39</i>	<i>52</i>	<i>72</i>	<i>78</i>	<i>84</i>	<i>98</i>	<i>108</i>	<i>122</i>	<i>131</i>	<i>140</i>	<i>159</i>	<i>176</i>	<i>190</i>	<i>203</i>	<i>241</i>	<i>289</i>
<i>Textiles, clothing & leather goods</i>	<i>CC</i>	<i>55</i>	<i>63</i>	<i>62</i>	<i>68</i>	<i>81</i>	<i>87</i>	<i>20</i>	<i>22</i>	<i>22</i>	<i>25</i>	<i>34</i>	<i>59</i>	<i>71</i>	<i>82</i>	<i>95</i>	<i>105</i>
<i>Wood & paper; printing</i>	<i>CD</i>	<i>11</i>	<i>12</i>	<i>13</i>	<i>16</i>	<i>15</i>	<i>18</i>	<i>20</i>	<i>21</i>	<i>25</i>	<i>29</i>	<i>26</i>	<i>27</i>	<i>34</i>	<i>31</i>	<i>39</i>	<i>37</i>
<i>Chemicals, rubber & plastic products</i>	<i>CE</i>	<i>15</i>	<i>17</i>	<i>17</i>	<i>19</i>	<i>24</i>	<i>26</i>	<i>27</i>	<i>26</i>	<i>29</i>	<i>31</i>	<i>34</i>	<i>38</i>	<i>55</i>	<i>67</i>	<i>85</i>	<i>118</i>
<i>Non-metallic mineral products</i>	<i>CF</i>	<i>8</i>	<i>9</i>	<i>10</i>	<i>12</i>	<i>15</i>	<i>17</i>	<i>18</i>	<i>22</i>	<i>25</i>	<i>30</i>	<i>34</i>	<i>34</i>	<i>44</i>	<i>45</i>	<i>48</i>	<i>64</i>
<i>Metal products, machinery & equipment</i>	<i>CG</i>	<i>5</i>	<i>6</i>	<i>6</i>	<i>9</i>	<i>13</i>	<i>16</i>	<i>14</i>	<i>18</i>	<i>25</i>	<i>29</i>	<i>32</i>	<i>40</i>	<i>47</i>	<i>51</i>	<i>54</i>	<i>58</i>
<i>Furniture & other manufacturing</i>	<i>CH</i>	<i>12</i>	<i>16</i>	<i>17</i>	<i>24</i>	<i>33</i>	<i>37</i>	<i>41</i>	<i>47</i>	<i>55</i>	<i>52</i>	<i>61</i>	<i>72</i>	<i>80</i>	<i>77</i>	<i>101</i>	<i>113</i>
Electricity	D	26	17	20	23	27	35	41	45	55	78	84	86	89	90	91	65
Water & waste management	E	21	14	16	19	22	24	25	26	28	32	32	33	55	59	63	63
Construction	F	110	163	186	209	273	331	380	414	464	474	458	502	696	678	756	1,038
SERVICES	G-T	1,073	1,397	1,596	1,781	1,979	2,297	2,518	2,767	3,059	3,374	3,684	4,124	4,570	4,471	5,218	6,377
TRADE & TRANSPORT	G-H	259	376	417	475	540	649	699	754	824	897	992	1,219	1,410	1,396	1,710	2,238
Maintenance and repair of motor vehicles	GA	12	17	19	21	24	27	29	31	33	37	40	45	50	56	68	77
Wholesale & retail trade	GB	164	245	267	302	344	408	435	482	528	559	597	707	789	795	1,039	1,355
Transport services	H	84	114	131	152	171	213	235	242	263	300	355	467	571	545	602	806
OTHER SERVICES	I-T	814	1,020	1,180	1,306	1,440	1,648	1,819	2,013	2,235	2,477	2,692	2,905	3,161	3,074	3,509	4,139
Hotels & restaurants	I	59	71	75	84	90	96	100	119	134	154	140	157	172	92	106	189
Information & communication	J	44	59	67	77	86	108	107	118	135	138	134	144	185	194	215	201
Financial services	K	53	59	59	75	94	121	144	145	159	164	191	206	225	220	281	369
Real estate activities	L	203	280	341	356	374	371	367	401	430	488	560	607	648	644	683	712
Professional, scientific and technical activities	M	52	71	87	90	95	107	116	109	128	144	163	181	204	219	249	287
Administrative and support service activities	N	70	96	116	122	128	145	156	183	218	253	277	291	313	314	334	386
Public administration and defence; compulsory social security	O	110	127	147	174	211	268	303	332	359	417	446	489	524	562	590	721
Education	P	50	58	74	90	112	138	185	204	208	220	231	240	258	166	326	494
Human health and social work activities	Q	43	53	64	76	79	100	114	130	134	137	160	153	155	182	190	181
Cultural, domestic & other services	R-T	130	146	148	162	170	195	226	271	330	361	391	437	478	482	533	599
TAXES LESS SUBSIDIES ON PRODUCTS		200	273	305	338	417	384	387	480	543	597	654	692	789	780	858	1,012

Source: National Institute of Statistics of Rwanda
March 16, 2023

Table 1A
Gross Domestic product by Kind of Activity
Shares at current prices
(percentages)

Activity description	ISIC4	2007	2008	2009	2010	2011	2012	2013	2014	2015	2016	2017	2018	2019	2020	2021	2022
GROSS DOMESTIC PRODUCT (GDP)		100%	100%	100%	100%	100%	100%	100%	100%	100%	100%	100%	100%	100%	100%	100%	100%
AGRICULTURE, FORESTRY & FISHING	A	26%	25%	25%	24%	24%	25%	25%	25%	24%	25%	26%	25%	24%	27%	24%	25%
Food crops	AA	14%	12%	14%	13%	13%	14%	15%	15%	14%	16%	17%	14%	13%	16%	13%	14%
Export crops	AB	2%	2%	2%	2%	2%	2%	1%	2%	1%	2%	2%	2%	1%	1%	1%	2%
Livestock & livestock products	AC	2%	2%	2%	2%	2%	2%	2%	2%	2%	2%	2%	3%	3%	3%	3%	3%
Forestry	AD	8%	8%	7%	7%	7%	6%	6%	6%	6%	5%	5%	6%	6%	6%	6%	6%
Fishing	AE	0%	0%	0%	0%	0%	0%	0%	0%	0%	0%	0%	0%	0%	0%	0%	0%
INDUSTRY	B-F	17%	16%	16%	16%	18%	18%	18%	18%	17%	17%	17%	17%	19%	19%	20%	21%
Mining & quarrying	B	2%	2%	1%	1%	2%	2%	2%	2%	2%	2%	2%	2%	1%	1%	3%	3%
TOTAL MANUFACTURING	C	8%	8%	8%	8%	8%	8%	7%	7%	7%	7%	8%	8%	8%	9%	9%	10%
<i>Of which: Food</i>	<i>CA</i>	<i>2%</i>	<i>2%</i>	<i>2%</i>	<i>2%</i>	<i>2%</i>	<i>2%</i>	<i>2%</i>	<i>2%</i>	<i>2%</i>	<i>2%</i>	<i>3%</i>	<i>2%</i>	<i>3%</i>	<i>3%</i>	<i>3%</i>	<i>4%</i>
<i>Beverages & tobacco</i>	<i>CB</i>	<i>2%</i>	<i>2%</i>	<i>2%</i>	<i>2%</i>	<i>2%</i>	<i>2%</i>	<i>2%</i>	<i>2%</i>	<i>2%</i>	<i>2%</i>	<i>2%</i>	<i>2%</i>	<i>2%</i>	<i>2%</i>	<i>2%</i>	<i>2%</i>
<i>Textiles, clothing & leather goods</i>	<i>CC</i>	<i>3%</i>	<i>2%</i>	<i>2%</i>	<i>2%</i>	<i>2%</i>	<i>2%</i>	<i>0%</i>	<i>0%</i>	<i>0%</i>	<i>0%</i>	<i>0%</i>	<i>1%</i>	<i>1%</i>	<i>1%</i>	<i>1%</i>	<i>1%</i>
<i>Wood & paper; printing</i>	<i>CD</i>	<i>1%</i>	<i>0%</i>	<i>0%</i>	<i>0%</i>	<i>0%</i>	<i>0%</i>	<i>0%</i>	<i>0%</i>	<i>0%</i>	<i>0%</i>	<i>0%</i>	<i>0%</i>	<i>0%</i>	<i>0%</i>	<i>0%</i>	<i>0%</i>
<i>Chemicals, rubber & plastic products</i>	<i>CE</i>	<i>1%</i>	<i>1%</i>	<i>1%</i>	<i>1%</i>	<i>1%</i>	<i>1%</i>	<i>1%</i>	<i>1%</i>	<i>1%</i>	<i>1%</i>	<i>0%</i>	<i>1%</i>	<i>1%</i>	<i>1%</i>	<i>1%</i>	<i>1%</i>
<i>Non-metallic mineral products</i>	<i>CF</i>	<i>0%</i>	<i>0%</i>	<i>0%</i>	<i>0%</i>	<i>0%</i>	<i>0%</i>	<i>0%</i>	<i>0%</i>	<i>0%</i>	<i>0%</i>	<i>0%</i>	<i>0%</i>	<i>1%</i>	<i>1%</i>	<i>0%</i>	<i>1%</i>
<i>Metal products, machinery & equipment</i>	<i>CG</i>	<i>0%</i>	<i>0%</i>	<i>0%</i>	<i>0%</i>	<i>0%</i>	<i>0%</i>	<i>0%</i>	<i>0%</i>	<i>0%</i>	<i>0%</i>	<i>0%</i>	<i>1%</i>	<i>1%</i>	<i>1%</i>	<i>1%</i>	<i>0%</i>
<i>Furniture & other manufacturing</i>	<i>CH</i>	<i>1%</i>	<i>1%</i>	<i>1%</i>	<i>1%</i>	<i>1%</i>	<i>1%</i>	<i>1%</i>	<i>1%</i>	<i>1%</i>	<i>1%</i>	<i>1%</i>	<i>1%</i>	<i>1%</i>	<i>1%</i>	<i>1%</i>	<i>1%</i>
Electricity	D	1%	1%	1%	1%	1%	1%	1%	1%	1%	1%	1%	1%	1%	1%	1%	1%
Water & waste management	E	1%	1%	1%	1%	1%	1%	1%	1%	0%	1%	0%	0%	1%	1%	1%	1%
Construction	F	5%	6%	6%	6%	7%	7%	8%	7%	8%	7%	6%	6%	8%	7%	7%	8%
SERVICES	G-T	48%	49%	50%	50%	48%	49%	50%	49%	50%	49%	48%	50%	49%	47%	48%	47%
TRADE & TRANSPORT	G-H	12%	13%	13%	13%	13%	14%	14%	13%	13%	13%	13%	15%	15%	15%	16%	16%
Maintenance and repair of motor vehicles	GA	1%	1%	1%	1%	1%	1%	1%	1%	1%	1%	1%	1%	1%	1%	1%	1%
Wholesale & retail trade	GB	7%	9%	8%	8%	8%	9%	9%	9%	9%	8%	8%	9%	8%	8%	10%	10%
Transport services	H	4%	4%	4%	4%	4%	5%	5%	4%	4%	4%	5%	6%	6%	6%	6%	6%
OTHER SERVICES	I-T	37%	36%	37%	37%	35%	35%	36%	36%	36%	36%	35%	35%	34%	32%	32%	30%
Hotels & restaurants	I	3%	3%	2%	2%	2%	2%	2%	2%	2%	2%	2%	2%	2%	1%	1%	1%
Information & communication	J	2%	2%	2%	2%	2%	2%	2%	2%	2%	2%	2%	2%	2%	2%	2%	2%
Financial services	K	2%	2%	2%	2%	2%	3%	3%	3%	3%	2%	3%	3%	2%	2%	3%	3%
Real estate activities	L	9%	10%	11%	10%	9%	8%	7%	7%	7%	7%	7%	7%	7%	7%	6%	5%
Professional, scientific and technical activities	M	2%	3%	3%	3%	2%	2%	2%	2%	2%	2%	2%	2%	2%	2%	2%	2%
Administrative and support service activities	N	3%	3%	4%	3%	3%	3%	3%	3%	4%	4%	4%	4%	3%	3%	3%	3%
Public administration and defence; compulsory social security	O	5%	5%	5%	5%	5%	6%	6%	6%	6%	6%	6%	6%	6%	6%	5%	5%
Education	P	2%	2%	2%	3%	3%	3%	4%	4%	3%	3%	3%	3%	3%	2%	3%	4%
Human health and social work activities	Q	2%	2%	2%	2%	2%	2%	2%	2%	2%	2%	2%	2%	2%	2%	2%	1%
Cultural, domestic & other services	R-T	6%	5%	5%	5%	4%	4%	5%	5%	5%	5%	5%	5%	5%	5%	5%	4%
TAXES LESS SUBSIDIES ON PRODUCTS		9%	10%	9%	9%	10%	8%	8%	9%	9%	9%	8%	8%	8%	8%	8%	7%

Source: National Institute of Statistics of Rwanda
March 16, 2023

Table 2
Gross Domestic product by Kind of Activity
at constant 2017 prices
(in billion Rwf)

Activity description	ISIC4	2007	2008	2009	2010	2011	2012	2013	2014	2015	2016	2017	2018	2019	2020	2021	2022
GROSS DOMESTIC PRODUCT (GDP)		3,882	4,315	4,585	4,921	5,313	5,772	6,045	6,417	6,986	7,403	7,694	8,351	9,142	8,833	9,794	10,593
AGRICULTURE, FORESTRY & FISHING	A	1,200	1,278	1,377	1,445	1,508	1,611	1,664	1,775	1,863	1,935	2,027	2,151	2,259	2,278	2,424	2,461
Food crops	AA	748	795	869	912	946	1,023	1,063	1,157	1,199	1,235	1,297	1,373	1,428	1,433	1,529	1,516
Export crops	AB	89	115	97	111	114	124	118	116	132	136	138	147	154	140	139	144
Livestock & livestock products	AC	102	105	108	113	116	124	132	142	155	170	186	206	229	247	268	291
Forestry	AD	276	286	293	302	310	321	330	341	354	367	378	395	417	432	455	477
Fishing	AE	22	22	23	24	24	24	25	26	26	27	29	30	31	26	33	34
INDUSTRY	B-F	623	717	726	787	928	1,005	1,099	1,127	1,228	1,310	1,330	1,446	1,686	1,614	1,831	1,922
Mining & quarrying	B	102	86	71	63	94	87	105	131	124	137	165	170	170	117	148	169
TOTAL MANUFACTURING	C	385	407	419	458	496	525	549	480	520	555	591	671	746	762	842	935
<i>Of which: Food</i>	<i>CA</i>	<i>115</i>	<i>124</i>	<i>132</i>	<i>144</i>	<i>150</i>	<i>151</i>	<i>163</i>	<i>172</i>	<i>174</i>	<i>188</i>	<i>210</i>	<i>237</i>	<i>248</i>	<i>265</i>	<i>284</i>	<i>322</i>
<i>Beverages & tobacco</i>	<i>CB</i>	<i>116</i>	<i>119</i>	<i>125</i>	<i>127</i>	<i>137</i>	<i>143</i>	<i>148</i>	<i>159</i>	<i>168</i>	<i>174</i>	<i>159</i>	<i>166</i>	<i>184</i>	<i>186</i>	<i>197</i>	<i>214</i>
<i>Textiles, clothing & leather goods</i>	<i>CC</i>	<i>86</i>	<i>85</i>	<i>83</i>	<i>85</i>	<i>83</i>	<i>90</i>	<i>20</i>	<i>21</i>	<i>22</i>	<i>24</i>	<i>34</i>	<i>54</i>	<i>64</i>	<i>61</i>	<i>71</i>	<i>85</i>
<i>Wood & paper; printing</i>	<i>CD</i>	<i>15</i>	<i>16</i>	<i>17</i>	<i>18</i>	<i>16</i>	<i>19</i>	<i>21</i>	<i>23</i>	<i>26</i>	<i>28</i>	<i>26</i>	<i>29</i>	<i>37</i>	<i>34</i>	<i>40</i>	<i>47</i>
<i>Chemicals, rubber & plastic products</i>	<i>CE</i>	<i>18</i>	<i>19</i>	<i>19</i>	<i>20</i>	<i>22</i>	<i>23</i>	<i>22</i>	<i>21</i>	<i>24</i>	<i>26</i>	<i>34</i>	<i>40</i>	<i>53</i>	<i>54</i>	<i>66</i>	<i>75</i>
<i>Non-metallic mineral products</i>	<i>CF</i>	<i>12</i>	<i>12</i>	<i>12</i>	<i>13</i>	<i>15</i>	<i>17</i>	<i>19</i>	<i>22</i>	<i>26</i>	<i>31</i>	<i>34</i>	<i>37</i>	<i>44</i>	<i>44</i>	<i>49</i>	<i>53</i>
<i>Metal products, machinery & equipment</i>	<i>CG</i>	<i>6</i>	<i>7</i>	<i>7</i>	<i>10</i>	<i>13</i>	<i>16</i>	<i>14</i>	<i>18</i>	<i>25</i>	<i>29</i>	<i>32</i>	<i>39</i>	<i>47</i>	<i>51</i>	<i>53</i>	<i>57</i>
<i>Furniture & other manufacturing</i>	<i>CH</i>	<i>19</i>	<i>21</i>	<i>20</i>	<i>28</i>	<i>38</i>	<i>41</i>	<i>46</i>	<i>52</i>	<i>61</i>	<i>55</i>	<i>61</i>	<i>68</i>	<i>69</i>	<i>67</i>	<i>83</i>	<i>82</i>
Electricity	D	26	30	35	40	46	54	58	63	68	77	84	92	98	100	112	128
Water & waste management	E	14	17	19	22	25	28	29	30	30	32	32	33	33	34	36	37
Construction	F	173	221	224	244	301	345	382	420	485	509	458	480	638	602	693	653
SERVICES	G-T	1,646	1,873	1,990	2,173	2,347	2,618	2,756	2,948	3,256	3,488	3,684	4,041	4,376	4,134	4,625	5,188
TRADE & TRANSPORT	G-H	406	490	516	563	602	692	732	782	871	930	992	1,172	1,338	1,196	1,357	1,573
Maintenance and repair of motor vehicles	GA	20	23	24	27	29	31	33	34	36	38	40	43	46	45	60	63
Wholesale & retail trade	GB	255	305	317	346	373	426	450	488	550	584	597	705	815	788	880	1,002
Transport services	H	128	158	173	189	197	234	250	260	285	308	355	424	477	364	417	508
OTHER SERVICES	I-T	1,258	1,383	1,476	1,613	1,754	1,928	2,024	2,166	2,385	2,558	2,692	2,869	3,039	2,938	3,268	3,615
Hotels & restaurants	I	78	82	78	84	87	92	95	107	117	130	140	150	165	98	118	221
Information & communication	J	44	55	60	65	67	89	89	95	112	121	134	153	167	216	257	307
Financial services	K	83	84	81	100	120	135	149	154	173	179	191	210	228	222	262	289
Real estate activities	L	352	407	441	445	444	443	446	471	493	523	560	586	609	611	636	646
Professional, scientific and technical activities	M	97	112	122	123	123	130	135	125	143	151	163	179	197	195	221	223
Administrative and support service activities	N	131	151	163	165	165	175	181	208	242	266	277	288	302	281	297	301
Public administration and defence; compulsory social security	O	177	186	200	229	262	319	349	373	393	437	446	477	500	514	527	577
Education	P	117	125	145	157	185	198	207	214	218	226	231	239	244	153	242	284
Human health and social work activities	Q	61	68	78	91	93	114	121	131	144	153	160	160	165	192	209	225
Cultural, domestic & other services	R-T	197	201	190	203	202	224	252	292	348	372	391	427	462	456	499	540
TAXES LESS SUBSIDIES ON PRODUCTS		405	452	495	520	528	538	520	562	641	669	654	713	820	806	914	1,022

Source: National Institute of Statistics of Rwanda
March 16, 2023

Tables 2A
Gross Domestic product by Kind of Activity
Growth rates at constant 2017 prices
(percentage change from previous year)

Activity description	ISIC4	2007	2008	2009	2010	2011	2012	2013	2014	2015	2016	2017	2018	2019	2020	2021	2022
GROSS DOMESTIC PRODUCT (GDP)		7.6%	11.2%	6.2%	7.3%	8.0%	8.6%	4.7%	6.2%	8.9%	6.0%	3.9%	8.5%	9.5%	-3.4%	10.9%	8.2%
AGRICULTURE, FORESTRY & FISHING	A	3%	6%	8%	5%	4%	7%	3%	7%	5%	4%	5%	6%	5%	1%	6%	2%
Food crops	AA	4%	6%	9%	5%	4%	8%	4%	9%	4%	3%	5%	6%	4%	0%	7%	-1%
Export crops	AB	-29%	29%	-15%	14%	3%	9%	-5%	-2%	14%	2%	2%	7%	5%	-9%	-1%	4%
Livestock & livestock products	AC	3%	3%	3%	5%	3%	6%	7%	8%	9%	10%	9%	11%	11%	8%	8%	9%
Forestry	AD	3%	4%	2%	3%	3%	4%	3%	3%	4%	4%	3%	4%	6%	4%	5%	5%
Fishing	AE	3%	3%	3%	3%	3%	-2%	5%	4%	3%	3%	5%	5%	4%	-16%	24%	3%
INDUSTRY	B-F	9%	15%	1%	8%	18%	8%	9%	3%	9%	7%	2%	9%	17%	-4%	13%	5%
Mining & quarrying	B	43%	-16%	-18%	-11%	50%	-7%	20%	25%	-5%	10%	20%	3%	0%	-31%	27%	14%
TOTAL MANUFACTURING	C	1%	6%	3%	9%	8%	6%	5%	-13%	8%	7%	7%	14%	11%	2%	11%	11%
<i>Of which: Food</i>	<i>CA</i>	<i>-5%</i>	<i>8%</i>	<i>6%</i>	<i>9%</i>	<i>4%</i>	<i>1%</i>	<i>8%</i>	<i>6%</i>	<i>1%</i>	<i>8%</i>	<i>12%</i>	<i>13%</i>	<i>4%</i>	<i>7%</i>	<i>7%</i>	<i>13%</i>
<i>Beverages & tobacco</i>	<i>CB</i>	<i>-2%</i>	<i>3%</i>	<i>4%</i>	<i>2%</i>	<i>8%</i>	<i>4%</i>	<i>4%</i>	<i>7%</i>	<i>6%</i>	<i>3%</i>	<i>-8%</i>	<i>4%</i>	<i>11%</i>	<i>1%</i>	<i>6%</i>	<i>9%</i>
<i>Textiles, clothing & leather goods</i>	<i>CC</i>	<i>9%</i>	<i>-1%</i>	<i>-2%</i>	<i>2%</i>	<i>-1%</i>	<i>8%</i>	<i>-78%</i>	<i>7%</i>	<i>3%</i>	<i>10%</i>	<i>40%</i>	<i>60%</i>	<i>18%</i>	<i>-4%</i>	<i>16%</i>	<i>21%</i>
<i>Wood & paper; printing</i>	<i>CD</i>	<i>18%</i>	<i>8%</i>	<i>8%</i>	<i>5%</i>	<i>-11%</i>	<i>15%</i>	<i>12%</i>	<i>10%</i>	<i>11%</i>	<i>11%</i>	<i>-8%</i>	<i>13%</i>	<i>27%</i>	<i>-9%</i>	<i>19%</i>	<i>16%</i>
<i>Chemicals, rubber & plastic products</i>	<i>CE</i>	<i>1%</i>	<i>3%</i>	<i>0%</i>	<i>5%</i>	<i>14%</i>	<i>2%</i>	<i>-3%</i>	<i>-2%</i>	<i>13%</i>	<i>5%</i>	<i>33%</i>	<i>19%</i>	<i>31%</i>	<i>1%</i>	<i>23%</i>	<i>14%</i>
<i>Non-metallic mineral products</i>	<i>CF</i>	<i>1%</i>	<i>5%</i>	<i>-6%</i>	<i>11%</i>	<i>18%</i>	<i>14%</i>	<i>7%</i>	<i>17%</i>	<i>20%</i>	<i>21%</i>	<i>8%</i>	<i>10%</i>	<i>19%</i>	<i>-1%</i>	<i>12%</i>	<i>7%</i>
<i>Metal products, machinery & equipment</i>	<i>CG</i>	<i>22%</i>	<i>11%</i>	<i>-5%</i>	<i>44%</i>	<i>33%</i>	<i>26%</i>	<i>-14%</i>	<i>29%</i>	<i>39%</i>	<i>16%</i>	<i>11%</i>	<i>23%</i>	<i>20%</i>	<i>8%</i>	<i>4%</i>	<i>7%</i>
<i>Furniture & other manufacturing</i>	<i>CH</i>	<i>22%</i>	<i>11%</i>	<i>-5%</i>	<i>44%</i>	<i>33%</i>	<i>10%</i>	<i>12%</i>	<i>13%</i>	<i>17%</i>	<i>-10%</i>	<i>11%</i>	<i>11%</i>	<i>3%</i>	<i>-4%</i>	<i>23%</i>	<i>-1%</i>
Electricity	D	5%	18%	15%	15%	15%	17%	8%	9%	8%	14%	8%	10%	7%	2%	12%	14%
Water & waste management	E	5%	18%	15%	15%	15%	9%	5%	3%	1%	5%	2%	2%	2%	2%	5%	4%
Construction	F	15%	28%	1%	9%	24%	15%	11%	10%	15%	5%	-10%	5%	33%	-6%	15%	-6%
SERVICES	G-T	12%	14%	6%	9%	8%	12%	5%	7%	10%	7%	6%	10%	8%	-6%	12%	12%
TRADE & TRANSPORT	G-H	15%	21%	5%	9%	7%	15%	6%	7%	12%	7%	7%	18%	14%	-11%	14%	16%
Maintenance and repair of motor vehicles	GA	15%	19%	4%	9%	8%	8%	6%	4%	5%	7%	6%	7%	7%	-3%	35%	5%
Wholesale & retail trade	GB	15%	19%	4%	9%	8%	14%	6%	8%	13%	6%	2%	18%	16%	-3%	12%	14%
Transport services	H	15%	24%	9%	9%	4%	19%	7%	4%	10%	8%	15%	20%	12%	-24%	15%	22%
OTHER SERVICES	I-T	11%	10%	7%	9%	9%	10%	5%	7%	10%	7%	5%	7%	6%	-3%	11%	11%
Hotels & restaurants	I	3%	6%	-6%	8%	4%	6%	3%	12%	9%	11%	7%	7%	10%	-40%	20%	87%
Information & communication	J	15%	23%	9%	9%	4%	33%	0%	7%	18%	9%	11%	14%	9%	29%	19%	20%
Financial services	K	12%	2%	-4%	24%	20%	13%	10%	4%	12%	3%	7%	10%	8%	-2%	18%	10%
Real estate activities	L	11%	16%	8%	1%	0%	0%	1%	6%	5%	6%	7%	5%	4%	0%	4%	2%
Professional, scientific and technical activities	M	11%	16%	8%	1%	0%	6%	4%	-8%	14%	6%	8%	10%	10%	-1%	13%	1%
Administrative and support service activities	N	11%	16%	8%	1%	0%	7%	4%	15%	16%	10%	4%	4%	5%	-7%	6%	1%
Public administration and defence; compulsory social security	O	6%	5%	7%	14%	15%	22%	9%	7%	5%	11%	2%	7%	5%	3%	2%	10%
Education	P	15%	7%	16%	9%	18%	7%	4%	3%	2%	4%	2%	4%	2%	-38%	59%	17%
Human health and social work activities	Q	14%	12%	15%	16%	2%	23%	6%	8%	10%	6%	5%	0%	3%	16%	9%	8%
Cultural, domestic & other services	R-T	14%	2%	-5%	7%	-1%	11%	12%	16%	19%	7%	5%	-1%	9%	8%	10%	8%
TAXES LESS SUBSIDIES ON PRODUCTS		4%	12%	10%	5%	2%	2%	-3%	8%	14%	5%	-2%	9%	15%	-2%	13%	12%

Source: National Institute of Statistics of Rwanda
March 16, 2023

Table 2B
Gross Domestic product by Kind of Activity
Growth rates at constant 2017 prices
(Percentage points)

Activity description	ISIC4	2007	2008	2009	2010	2011	2012	2013	2014	2015	2016	2017	2018	2019	2020	2021	2022	
GROSS DOMESTIC PRODUCT (GDP)		7.3	10.5	5.3	6.5	6.3	8.5	3.3	7.6	8.8	5.9	3.9	8.5	9.5	-3.4	10.9	8.2	
AGRICULTURE, FORESTRY & FISHING	A	0.1	2.2	1.6	1.6	1.0	2.0	0.9	1.9	1.3	1.0	1.2	1.6	1.3	0.2	1.6	0.4	
Food crops	AA	0.8	1.2	1.7	0.9	0.7	1.5	0.7	1.5	0.7	0.5	0.8	1.0	0.7	0.1	1.1	-0.1	
Export crops	AB	-1.0	0.7	-0.4	0.3	0.1	0.2	-0.1	0.0	0.3	0.0	0.0	0.1	0.1	-0.2	0.0	0.1	
Livestock & livestock products	AC	0.1	0.1	0.1	0.1	0.1	0.1	0.1	0.2	0.2	0.2	0.2	0.3	0.3	0.2	0.2	0.2	
Forestry	AD	0.2	0.3	0.2	0.2	0.2	0.2	0.2	0.2	0.2	0.2	0.2	0.2	0.3	0.2	0.3	0.2	
Fishing	AE	0.0	0.0	0.0	0.0	0.0	0.0	0.0	0.0	0.0	0.0	0.0	0.0	0.0	-0.1	0.1	0.0	
INDUSTRY	B-F	1.7	1.4	0.1	1.1	2.6	1.4	0.2	1.8	1.6	1.1	0.3	1.5	2.9	-0.8	2.4	0.9	
Mining & quarrying	B	0.8	-0.4	-0.4	-0.2	0.6	-0.1	0.3	0.4	-0.1	0.2	0.4	0.1	0.0	-0.6	0.4	0.2	
TOTAL MANUFACTURING	C	0.2	0.4	0.2	0.7	0.6	0.5	-0.8	0.6	0.6	0.4	0.5	1.0	0.9	0.2	0.9	0.9	
<i>Of which: Food</i>	<i>CA</i>	<i>-0.2</i>	<i>0.2</i>	<i>0.2</i>	<i>0.3</i>	<i>0.1</i>	<i>0.0</i>	<i>0.2</i>	<i>0.2</i>	<i>0.0</i>	<i>0.2</i>	<i>0.3</i>	<i>0.4</i>	<i>0.1</i>	<i>0.2</i>	<i>0.2</i>	<i>0.4</i>	
<i>Beverages & tobacco</i>	<i>CB</i>	<i>-0.1</i>	<i>0.1</i>	<i>0.1</i>	<i>0.1</i>	<i>0.2</i>	<i>0.1</i>	<i>0.1</i>	<i>0.2</i>	<i>0.1</i>	<i>0.1</i>	<i>-0.2</i>	<i>0.1</i>	<i>0.2</i>	<i>0.0</i>	<i>0.1</i>	<i>0.2</i>	
<i>Textiles, clothing & leather goods</i>	<i>CC</i>	<i>0.2</i>	<i>0.0</i>	<i>0.0</i>	<i>0.0</i>	<i>0.0</i>	<i>0.1</i>	<i>-1.2</i>	<i>0.0</i>	<i>0.0</i>	<i>0.0</i>	<i>0.1</i>	<i>0.3</i>	<i>0.1</i>	<i>0.0</i>	<i>0.1</i>	<i>0.2</i>	
<i>Wood & paper; printing</i>	<i>CD</i>	<i>0.1</i>	<i>0.0</i>	<i>0.0</i>	<i>0.0</i>	<i>0.0</i>	<i>0.0</i>	<i>0.0</i>	<i>0.0</i>	<i>0.0</i>	<i>0.0</i>	<i>0.0</i>	<i>0.0</i>	<i>0.1</i>	<i>0.0</i>	<i>0.1</i>	<i>0.1</i>	
<i>Chemicals, rubber & plastic products</i>	<i>CE</i>	<i>0.0</i>	<i>0.0</i>	<i>0.0</i>	<i>0.0</i>	<i>0.1</i>	<i>0.0</i>	<i>0.0</i>	<i>0.0</i>	<i>0.0</i>	<i>0.0</i>	<i>0.1</i>	<i>0.1</i>	<i>0.2</i>	<i>0.0</i>	<i>0.1</i>	<i>0.1</i>	
<i>Non-metallic mineral products</i>	<i>CF</i>	<i>0.0</i>	<i>0.0</i>	<i>0.0</i>	<i>0.0</i>	<i>0.0</i>	<i>0.0</i>	<i>0.0</i>	<i>0.1</i>	<i>0.1</i>	<i>0.1</i>	<i>0.0</i>	<i>0.0</i>	<i>0.1</i>	<i>0.0</i>	<i>0.1</i>	<i>0.0</i>	
<i>Metal products, machinery & equipment</i>	<i>CG</i>	<i>0.0</i>	<i>0.0</i>	<i>0.0</i>	<i>0.1</i>	<i>0.1</i>	<i>0.1</i>	<i>0.0</i>	<i>0.1</i>	<i>0.1</i>	<i>0.1</i>	<i>0.0</i>	<i>0.1</i>	<i>0.1</i>	<i>0.0</i>	<i>0.0</i>	<i>0.0</i>	
<i>Furniture & other manufacturing</i>	<i>CH</i>	<i>0.1</i>	<i>0.1</i>	<i>0.0</i>	<i>0.2</i>	<i>0.2</i>	<i>0.1</i>	<i>0.1</i>	<i>0.1</i>	<i>0.1</i>	<i>-0.1</i>	<i>0.1</i>	<i>0.1</i>	<i>0.0</i>	<i>0.0</i>	<i>0.2</i>	<i>0.0</i>	
Electricity	D	0.0	0.1	0.1	0.1	0.1	0.1	0.1	0.1	0.1	0.1	0.1	0.1	0.1	0.1	0.0	0.1	0.2
Water & waste management	E	0.0	0.1	0.1	0.1	0.1	0.0	0.0	0.0	0.0	0.0	0.0	0.0	0.0	0.0	0.0	0.0	
Construction	F	0.6	1.3	0.1	0.4	1.2	0.8	0.6	0.6	1.0	0.3	-0.7	0.3	1.9	-0.4	1.0	-0.4	
SERVICES	G-T	5.0	5.9	2.7	4.0	3.5	5.1	2.4	3.2	4.8	3.3	2.6	4.6	4.0	-2.6	5.6	5.7	
TRADE & TRANSPORT	G-H	1.4	2.2	0.6	1.0	0.8	1.7	0.7	0.8	1.4	0.8	0.8	2.3	2.0	-1.5	1.8	2.2	
Maintenance and repair of motor vehicles	GA	0.1	0.1	0.0	0.0	0.0	0.0	0.0	0.0	0.0	0.0	0.0	0.0	0.0	0.0	0.2	0.0	
Wholesale & retail trade	GB	0.9	1.3	0.3	0.6	0.6	1.0	0.4	0.6	1.0	0.5	0.2	1.4	1.3	-0.3	1.0	1.2	
Transport services	H	0.5	0.8	0.3	0.3	0.2	0.7	0.3	0.2	0.4	0.3	0.6	0.9	0.6	-1.2	0.6	0.9	
OTHER SERVICES	I-T	3.6	3.5	2.0	2.3	1.8	3.2	1.8	2.4	3.3	2.5	1.8	2.3	2.0	-1.1	3.7	3.5	
Hotels & restaurants	I	0.1	0.1	-0.1	0.1	0.1	0.1	0.1	0.2	0.2	0.2	0.1	0.1	0.2	-0.7	0.2	1.1	
Information & communication	J	0.2	0.3	0.1	0.1	0.1	0.4	0.0	0.1	0.3	0.1	0.2	0.2	0.2	0.5	0.5	0.5	
Financial services	K	0.2	0.0	-0.1	0.4	0.4	0.3	0.2	0.1	0.3	0.1	0.2	0.2	0.2	-0.1	0.5	0.3	
Real estate activities	L	0.9	1.4	0.8	0.1	0.0	0.0	0.1	0.4	0.3	0.4	0.5	0.3	0.3	0.0	0.3	0.1	
Professional, scientific and technical activities	M	0.3	0.4	0.2	0.0	0.0	0.1	0.1	-0.2	0.3	0.1	0.2	0.2	0.2	0.0	0.3	0.0	
Administrative and support service activities	N	0.3	0.5	0.3	0.0	0.0	0.2	0.1	0.4	0.5	0.3	0.2	0.1	0.2	-0.2	0.2	0.0	
Public administration and defence; compulsory social security	O	0.3	0.2	0.3	0.6	0.7	1.1	0.5	0.4	0.3	0.6	0.1	0.4	0.3	0.2	0.1	0.5	
Education	P	0.4	0.2	0.5	0.3	0.6	0.2	0.2	0.1	0.1	0.1	0.1	0.1	0.1	-1.0	1.0	0.4	
Human health and social work activities	Q	0.2	0.2	0.2	0.3	0.0	0.4	0.1	0.2	0.2	0.1	0.1	0.0	0.1	0.3	0.2	0.2	
Cultural, domestic & other services	R-T	0.7	0.1	-0.2	0.3	0.0	0.4	0.5	0.7	0.9	0.3	0.2	0.5	0.4	-0.1	0.5	0.4	
TAXES LESS SUBSIDIES ON PRODUCTS		0.5	1.2	1.0	0.5	0.2	0.2	-0.3	0.7	1.2	0.4	-0.2	0.8	1.3	-0.2	1.2	1.1	

Source: National Institute of Statistics of Rwanda
March 16, 2023

Table 3
Gross Domestic product by Kind of Activity

Deflators

(2017=100)

Activity description	ISIC4	2007	2008	2009	2010	2011	2012	2013	2014	2015	2016	2017	2018	2019	2020	2021	2022
GROSS DOMESTIC PRODUCT (GDP)		57	66	70	73	78	81	84	88	88	92	100	99	102	109	112	129
AGRICULTURE, FORESTRY & FISHING	A	48	55	59	60	65	72	76	78	79	89	100	95	97	112	109	139
Food crops	AA	42	44	50	50	56	64	70	71	73	86	100	84	87	106	95	124
Export crops	AB	46	48	54	58	59	69	58	75	67	78	100	94	75	90	96	145
Livestock & livestock products	AC	52	64	74	74	81	86	89	90	93	97	100	103	111	126	134	157
Forestry	AD	61	77	81	83	89	94	95	96	97	98	100	128	131	133	142	171
Fishing	AE	35	44	50	55	64	75	83	86	93	95	100	108	108	117	126	162
INDUSTRY	B-F	60	64	70	74	81	85	81	88	87	88	100	99	104	111	121	152
Mining & quarrying	B	34	48	38	58	88	89	96	91	85	80	100	109	79	104	207	230
TOTAL MANUFACTURING	C	47	55	61	64	70	74	63	80	81	83	100	94	104	110	119	145
<i>Of which: Food</i>	<i>CA</i>	<i>31</i>	<i>39</i>	<i>45</i>	<i>48</i>	<i>55</i>	<i>60</i>	<i>59</i>	<i>61</i>	<i>62</i>	<i>66</i>	<i>100</i>	<i>78</i>	<i>103</i>	<i>107</i>	<i>120</i>	<i>179</i>
<i>Beverages & tobacco</i>	<i>CB</i>	<i>34</i>	<i>44</i>	<i>57</i>	<i>61</i>	<i>62</i>	<i>69</i>	<i>73</i>	<i>77</i>	<i>78</i>	<i>81</i>	<i>100</i>	<i>106</i>	<i>103</i>	<i>109</i>	<i>123</i>	<i>135</i>
<i>Textiles, clothing & leather goods</i>	<i>CC</i>	<i>64</i>	<i>74</i>	<i>75</i>	<i>80</i>	<i>97</i>	<i>97</i>	<i>102</i>	<i>102</i>	<i>102</i>	<i>102</i>	<i>100</i>	<i>110</i>	<i>112</i>	<i>134</i>	<i>135</i>	<i>123</i>
<i>Wood & paper; printing</i>	<i>CD</i>	<i>77</i>	<i>78</i>	<i>77</i>	<i>88</i>	<i>95</i>	<i>95</i>	<i>95</i>	<i>93</i>	<i>98</i>	<i>102</i>	<i>100</i>	<i>94</i>	<i>91</i>	<i>92</i>	<i>96</i>	<i>79</i>
<i>Chemicals, rubber & plastic products</i>	<i>CE</i>	<i>81</i>	<i>94</i>	<i>93</i>	<i>99</i>	<i>106</i>	<i>116</i>	<i>123</i>	<i>123</i>	<i>119</i>	<i>121</i>	<i>100</i>	<i>95</i>	<i>105</i>	<i>125</i>	<i>129</i>	<i>156</i>
<i>Non-metallic mineral products</i>	<i>CF</i>	<i>66</i>	<i>75</i>	<i>87</i>	<i>93</i>	<i>95</i>	<i>97</i>	<i>99</i>	<i>99</i>	<i>96</i>	<i>95</i>	<i>100</i>	<i>92</i>	<i>100</i>	<i>103</i>	<i>97</i>	<i>121</i>
<i>Metal products, machinery & equipment</i>	<i>CG</i>	<i>73</i>	<i>88</i>	<i>95</i>	<i>94</i>	<i>97</i>	<i>99</i>	<i>99</i>	<i>99</i>	<i>100</i>	<i>100</i>	<i>100</i>	<i>101</i>	<i>100</i>	<i>99</i>	<i>101</i>	<i>102</i>
<i>Furniture & other manufacturing</i>	<i>CH</i>	<i>66</i>	<i>79</i>	<i>86</i>	<i>85</i>	<i>87</i>	<i>90</i>	<i>89</i>	<i>89</i>	<i>90</i>	<i>94</i>	<i>100</i>	<i>106</i>	<i>115</i>	<i>116</i>	<i>122</i>	<i>139</i>
Electricity	D	99	57	58	58	59	65	70	71	81	100	100	94	90	90	81	51
Water & waste management	E	147	84	86	87	88	88	88	88	92	101	100	99	164	171	175	169
Construction	F	64	74	83	86	91	96	99	99	96	93	100	104	109	113	109	159
SERVICES	G-T	65	75	80	82	84	88	91	94	94	97	100	102	104	108	113	123
TRADE & TRANSPORT	G-H	64	77	81	84	90	94	96	97	95	96	100	104	105	117	126	142
Maintenance and repair of motor vehicles	GA	59	74	77	80	85	88	90	91	92	98	100	105	109	126	113	121
Wholesale & retail trade	GB	64	80	84	87	92	96	97	99	96	96	100	100	97	101	118	135
Transport services	H	65	72	76	81	87	91	94	93	92	98	100	110	120	150	144	159
OTHER SERVICES	I-T	65	74	80	81	82	85	90	93	94	97	100	101	104	105	107	115
Hotels & restaurants	I	76	86	97	101	104	104	105	111	114	119	100	105	105	94	89	85
Information & communication	J	98	107	113	120	128	121	120	125	121	114	100	94	111	90	84	66
Financial services	K	64	70	73	75	78	89	96	94	92	92	100	98	99	99	107	128
Real estate activities	L	58	69	77	80	84	84	82	85	87	93	100	104	106	105	107	110
Professional, scientific and technical activities	M	53	63	71	74	78	83	86	88	90	95	100	101	104	112	113	129
Administrative and support service activities	N	53	63	71	74	78	83	86	88	90	95	100	101	104	112	112	128
Public administration and defence; compulsory social security	O	62	68	74	76	80	84	87	89	91	95	100	103	105	109	112	125
Education	P	42	47	51	57	61	70	89	95	95	97	100	100	105	108	134	174
Human health and social work activities	Q	71	78	82	84	85	88	95	100	93	90	100	96	94	95	91	80
Cultural, domestic & other services	R-T	66	73	78	80	84	87	90	93	95	97	100	102	103	106	107	111
TAXES LESS SUBSIDIES ON PRODUCTS		49	60	61	65	79	71	74	85	85	89	100	97	96	97	94	99

Source: National Institute of Statistics of Rwanda
March 16, 2023

Table 4
Expenditure on GDP
(in billion Rwf)

	2017	2007	2008	2009	2010	2011	2012	2013	2014	2015	2016	2017	2018	2019	2020	2021	2022
in current prices																	
Gross Domestic Product	7,694	2,226	2,833	3,225	3,571	4,133	4,702	5,057	5,623	6,150	6,845	7,694	8,298	9,305	9,596	10,930	13,716
Total final consumption expenditure	6,831	2,045	2,655	3,065	3,402	3,864	4,385	4,616	5,226	5,812	6,332	6,831	7,650	8,456	8,772	9,780	12,470
Government	1,155	315	348	411	467	497	609	651	803	852	1,032	1,155	1,224	1,472	1,573	1,856	2,338
Households and NGOs	5,676	1,729	2,307	2,654	2,935	3,367	3,776	3,965	4,423	4,960	5,301	5,676	6,426	6,983	7,200	7,924	10,133
Gross capital formation	1,834	374	605	678	733	864	1,096	1,235	1,306	1,491	1,789	1,834	1,774	2,183	2,410	2,856	3,359
Gross fixed capital formation	1,748	363	584	654	710	847	1,064	1,197	1,273	1,474	1,858	1,748	1,905	2,504	2,430	2,914	3,359
Construction	1,143	265	390	437	486	629	768	886	945	1,107	1,201	1,143	1,238	1,651	1,573	1,876	2,228
Other	605	97	193	217	223	218	297	312	327	367	657	605	668	853	857	1,038	1,130
Change in inventories	86	11	21	24	24	16	31	38	33	17	-68	86	-132	-321	-20	-58	1
Resource balance	-971	-192	-427	-518	-564	-595	-778	-794	-909	-1,152	-1,276	-971	-1,126	-1,333	-1,587	-1,707	-2,113
Exports of goods & services	1,580	304	319	334	384	523	564	682	780	814	1,056	1,580	1,752	2,031	1,855	2,136	3,084
Goods (fob)	853	105	157	122	168	298	337	419	429	403	391	853	956	1,108	1,361	1,500	2,187
Services	726	199	162	213	215	225	227	263	351	411	665	726	796	924	493	636	897
Imports of goods & services	2,550	497	746	853	948	1,118	1,342	1,477	1,689	1,966	2,332	2,550	2,878	3,365	3,442	3,843	5,197
Goods (fob)	1,672	304	469	562	659	790	994	1,046	1,174	1,221	1,475	1,672	1,968	2,436	2,928	3,254	4,243
Services	878	192	277	291	288	328	348	430	514	746	857	878	910	929	514	590	954
in constant 2017 prices																	
Gross Domestic Product	7,694	3,882	4,315	4,585	4,921	5,313	5,772	6,045	6,417	6,986	7,403	7,694	8,351	9,142	8,833	9,794	10,593
Total final consumption expenditure	6,831	3,553	3,803	4,188	4,450	4,816	5,194	5,377	5,833	6,469	6,791	6,831	7,526	8,088	7,780	8,538	9,530
Government	1,155	513	525	586	647	672	778	777	938	985	1,076	1,155	1,213	1,426	1,453	1,653	1,827
Households and NGOs	5,676	3,040	3,278	3,602	3,803	4,144	4,416	4,600	4,896	5,484	5,715	5,676	6,313	6,661	6,327	6,885	7,702
Gross capital formation	1,834	682	900	925	991	1,082	1,323	1,425	1,503	1,771	1,921	1,834	1,841	2,222	2,301	2,563	2,305
Gross fixed capital formation	1,748	688	913	938	1,003	1,097	1,337	1,434	1,503	1,786	1,947	1,748	1,852	2,445	2,334	2,719	2,605
Construction	1,143	444	575	582	635	791	913	1,016	1,068	1,236	1,267	1,143	1,197	1,590	1,499	1,727	1,628
Other	605	238	328	343	356	306	416	416	434	549	680	605	656	856	837	996	982
Change in inventories	86	-10	-11	-12	-13	-15	-18	-22	-28	-26	-23	86	-9	-216	-31	-151	-291
Resource balance	-971	-353	-387	-528	-519	-586	-745	-758	-919	-1,255	-1,309	-971	-1,016	-1,168	-1,247	-1,307	-1,242
Exports of goods & services	1,580	575	510	494	534	661	721	857	919	976	1,102	1,580	1,741	2,088	1,897	1,951	2,538
Goods (fob)	853	142	178	130	167	271	333	414	375	368	406	853	956	1,200	1,454	1,387	1,842
Services	726	473	340	393	387	382	363	403	529	605	696	726	785	887	442	564	696
Imports of goods & services	2,550	893	869	1,019	1,042	1,227	1,457	1,590	1,821	2,240	2,411	2,550	2,757	3,256	3,144	3,257	3,780
Goods (fob)	1,672	488	576	663	725	872	1,070	1,132	1,280	1,426	1,525	1,672	1,886	2,357	2,671	2,756	3,086
Services	878	435	302	368	321	355	380	458	541	815	886	878	871	899	473	501	694
Deflators (2017=100)																	
Gross Domestic Product	100	57	66	70	73	78	81	84	88	88	92	100	99	102	109	112	129
Total final consumption expenditure	100	58	70	73	76	80	84	86	90	90	93	100	102	105	113	115	131
Government	100	61	66	70	72	74	78	84	86	86	96	100	101	103	108	112	128
Households and NGOs	100	57	70	74	77	81	85	86	90	90	93	100	102	105	114	115	132
Gross capital formation	100	55	67	73	74	80	83	87	87	84	93	100	96	98	105	111	146
Gross fixed capital formation	100	53	64	70	71	77	80	84	85	83	95	100	103	102	104	107	129
Construction	100	60	68	75	77	80	84	87	89	90	95	100	103	104	105	109	137
Other	100	41	59	63	63	71	71	75	76	67	97	100	102	100	102	104	115
Change in inventories																	
Resource balance	100	54	110	98	109	102	104	105	99	92	97	100	111	114	127	131	170
Exports of goods & services	100	53	63	68	72	79	78	80	85	83	96	100	101	97	98	110	121
Goods (fob)	100	74	88	94	101	110	101	101	114	109	96	100	100	92	94	108	119
Services	100	42	48	54	56	59	63	65	66	68	95	100	101	104	112	113	129
Imports of goods & services	100	56	86	84	91	91	92	93	93	88	97	100	104	103	109	118	137
Goods (fob)	100	62	81	85	91	91	93	92	92	86	97	100	104	103	110	118	138
Services	100	44	92	79	90	92	92	94	95	92	97	100	104	103	109	118	137

Source: National Institute of Statistics of Rwanda

March 16, 2023

Table 4A
Expenditure on GDP

	2007	2008	2009	2010	2011	2012	2013	2014	2015	2016	2017	2018	2019	2020	2021	2022
Percentage of GDP, in current prices																
Gross Domestic Product	100%	100%	100%	100%	100%	100%	100%	100%	100%	100%	100%	100%	100%	100%	100%	100%
Total final consumption expenditure	92%	94%	95%	95%	93%	93%	91%	93%	94%	93%	89%	92%	91%	91%	89%	91%
Government	14%	12%	13%	13%	12%	13%	13%	14%	14%	15%	15%	15%	16%	16%	17%	17%
Households and NGOs	78%	81%	82%	82%	81%	80%	78%	79%	81%	77%	74%	77%	75%	75%	73%	74%
Gross capital formation	17%	21%	21%	21%	21%	23%	24%	23%	24%	26%	24%	21%	23%	25%	26%	24%
Gross fixed capital formation	16%	21%	20%	20%	21%	23%	24%	23%	24%	27%	23%	23%	27%	25%	27%	24%
Construction	12%	14%	14%	14%	15%	16%	18%	17%	18%	18%	15%	15%	18%	16%	17%	16%
Other	4%	7%	7%	6%	5%	6%	6%	6%	6%	10%	8%	8%	9%	9%	9%	8%
Change in inventories	1%	1%	1%	1%	0%	1%	1%	1%	0%	-1%	1%	-2%	-3%	0%	-1%	0%
Resource balance	-9%	-15%	-16%	-16%	-14%	-17%	-16%	-16%	-19%	-19%	-13%	-14%	-14%	-17%	-16%	-15%
Exports of goods & services	14%	11%	10%	11%	13%	12%	13%	14%	13%	15%	21%	21%	22%	19%	20%	22%
Goods (fob)	5%	6%	4%	5%	7%	7%	8%	8%	7%	6%	11%	12%	12%	14%	14%	16%
Services	9%	6%	7%	6%	5%	5%	5%	6%	7%	10%	9%	10%	10%	5%	6%	7%
Imports of goods & services	22%	26%	26%	27%	27%	29%	29%	30%	32%	34%	33%	35%	36%	36%	35%	38%
Goods (fob)	14%	17%	17%	18%	19%	21%	21%	21%	20%	22%	22%	24%	26%	31%	30%	31%
Services	9%	10%	9%	8%	8%	7%	9%	9%	12%	13%	11%	11%	10%	5%	5%	7%
Growth rates, in constant 2017 prices																
Gross Domestic Product	7.6%	11.2%	6.2%	7.3%	8.0%	8.6%	4.7%	6.2%	8.9%	6.0%	3.9%	8.5%	9.5%	-3.4%	10.9%	8.2%
Total final consumption expenditure	2%	7%	10%	6%	8%	8%	4%	9%	11%	5%	1%	10%	8%	-4%	10%	12%
Government	1%	2%	12%	10%	4%	16%	0%	21%	5%	9%	7%	5%	18%	2%	14%	11%
Households and NGOs	3%	8%	10%	6%	9%	7%	4%	6%	12%	4%	-1%	11%	6%	-5%	9%	12%
Gross capital formation	27%	32%	3%	7%	9%	22%	8%	5%	18%	9%	-5%	0%	21%	4%	11%	-10%
Gross fixed capital formation	28%	33%	3%	7%	9%	22%	7%	5%	19%	9%	-10%	6%	32%	-5%	17%	-4%
Construction	16%	30%	1%	9%	25%	15%	11%	5%	16%	3%	-10%	5%	33%	-6%	15%	-6%
Other	53%	38%	4%	4%	-14%	36%	0%	4%	27%	24%	-11%	8%	31%	-2%	19%	-2%
Change in inventories																
Resource balance																
Exports of goods & services	44%	-11%	-3%	8%	24%	9%	19%	7%	6%	13%	43%	10%	20%	-9%	3%	30%
Goods (fob)	16%	26%	-27%	29%	62%	23%	24%	-9%	-2%	10%	110%	12%	26%	21%	-5%	33%
Services	62%	-28%	16%	-2%	-1%	-5%	11%	31%	14%	15%	4%	8%	13%	-50%	28%	23%
Imports of goods & services	12%	-3%	17%	2%	18%	19%	9%	15%	23%	8%	6%	8%	18%	-3%	4%	16%
Goods (fob)	26%	18%	15%	9%	20%	23%	6%	13%	11%	7%	10%	13%	25%	13%	3%	12%
Services	-1%	-31%	22%	-13%	11%	7%	21%	18%	51%	9%	-1%	-1%	3%	-47%	6%	38%

Source: National Institute of Statistics of Rwanda
March 16, 2023

Contacts:

National Institute of Statistics of Rwanda (NISR),
P.O. BOX 6139 Kigali,
Tel.: (250) 571035 Fax: (250) 570705.
Web site: <http://www.statistics.gov.rw>

Publication Directors:

MURANGWA Yusuf, Director General, NISR;
yusuf.murangwa@statistics.gov.rw;

MURENZI Ivan, Deputy Director General, NISR;
ivan.murenzi@statistics.gov.rw;

MWIZERWA J. Claude, Director of Economic Statistics Department, NISR;
claud.mwizerwa@statistics.gov.rw;

KAYITARE Ivan Patrick, National Accounts Statistics Team Leader, NISR;
patrick.kayitare@statistics.gov.rw;