



REPUBLIKA Y'U RWANDA



IBARURIZE KUKO URI UW'AGACIRO



IBARURA RUSANGE RYA 5 RY'ABATURAGE N'IMITURIRE MU RWANDA



“Ibaruze kuko uri uw'agaciro”





**IBARURA RUSANGE
RYA 5 RY'ABATURAGE
N'IMITURIRE MU RWANDA**





UMUBARE W'ABATURAGE, UKO WAGIYE WIYONGERA, IBYICIRO BYABO N'IMITERERE YABO

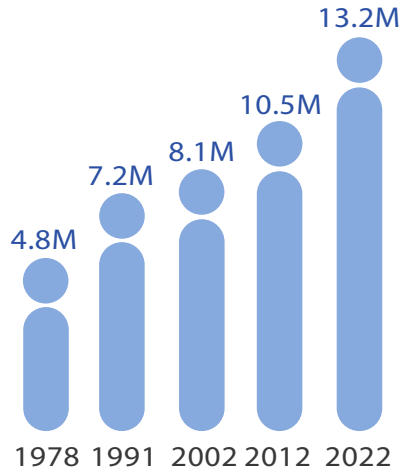


13,246,394

Umubare w'abaturage
bose mu mwaka wa 2022



Umubare w'abaturage wariyongereye uva kuri miliyoni 10.5 mu wa 2012 ugera kuri miliyoni 13.2. Igipimo cy'ubwiyongere buri mwaka ni 2.3%



UMUBARE W'INGO N'IMPUZANDENGO Y'UMUBARE W'ABANTU MU RUGO

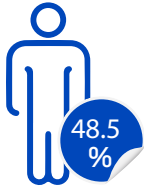


Ingo
3,312,743



Impuzandengo y'umubare
w'abantu mu rugo **4.0**

Umubare w'abaturage Hakurikijwe igitsina, aho batuye (Icyaro.Umujiyi), n'intara



Abagabo



Abagore

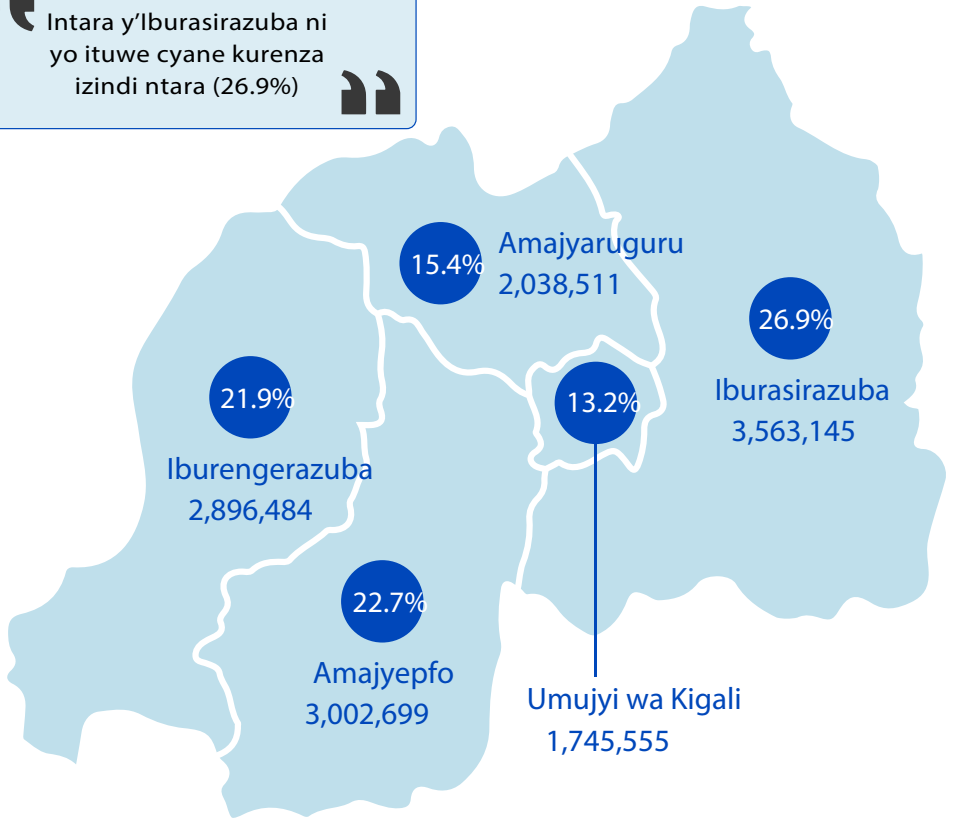


Icyaro

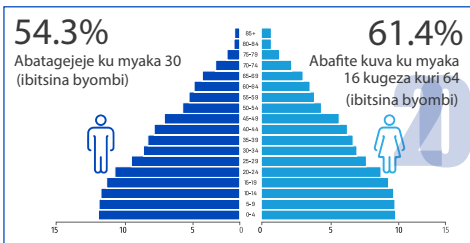
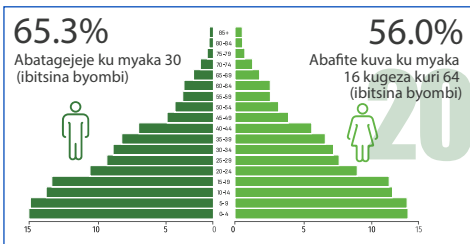
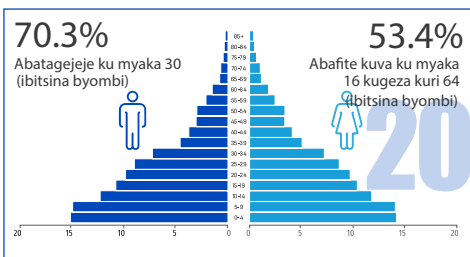
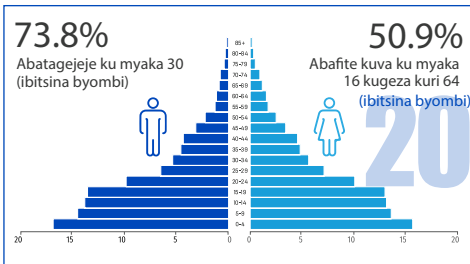


Umujiyi

“ Intara y'Iburasirazuba ni yo ituwe cyane kurenza izindi ntara (26.9%) ”



UMUBARE W'ABATURAGE HAKURIKIJWE IBYICIRO BY'IMYAKA Y'AMAVUKO (2002, 2012, 2022...2050)



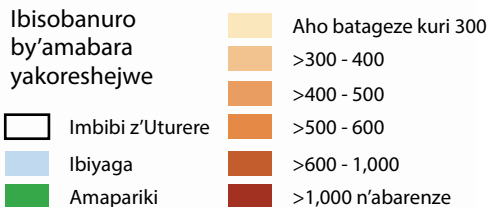
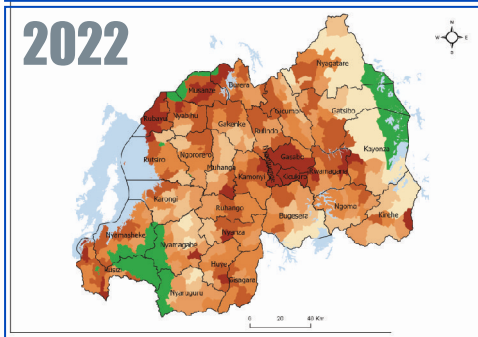
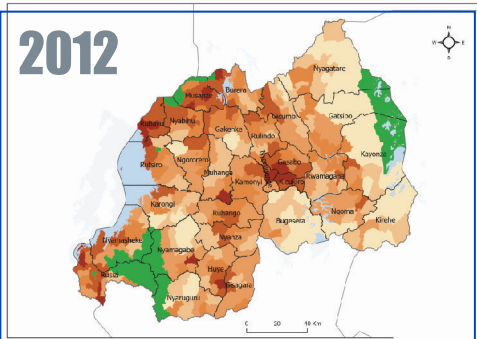
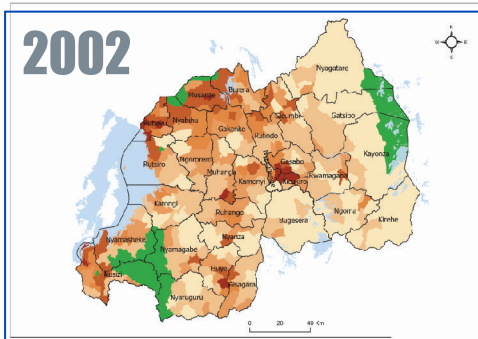
Umubare w'abana n'urubyiruko (<30)

Ujanishije, umubare w'abaturage batagejeje ku myaka 30 y'amavuko wavuye kuri 70.3% mu wa 2012 ugera kuri 65.3% mu wa 2022. Biteganyijwe ko uzakomeza kugabanuka ukagera kuri 54.3% mu wa 2050.

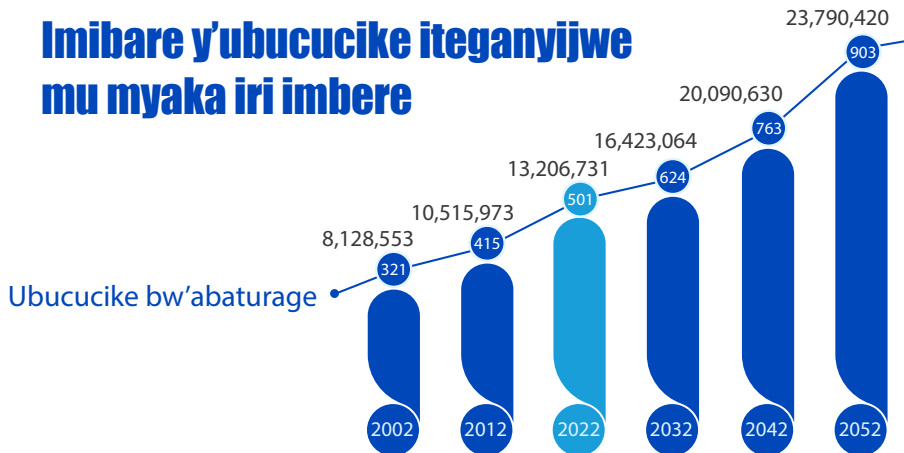
Umubare w'abafite imyaka y'amavuko kuva kuri 16 kugeza kuri 64

Ujanishije, umubare w'abaturage bafite kuva ku myaka 16 y'amavuko kugeza kuri 64 warazamutse uva kuri 53.4% mu wa 2012 ugera 56.0% kandi biteganyijwe ko uzakomeza kuzamuka ukagera kuri 61.4% mu wa 2050.

UBUCUCIKE BW'ABATURAGE MU TURERE MURI BURI MWAKA W'IBARURA N'UKO BUZAGENDA BUHINDUKA MU MYAKA IRI IMBERE



Imibare y'ubucucike iteganyijwe mu myaka iri imbere

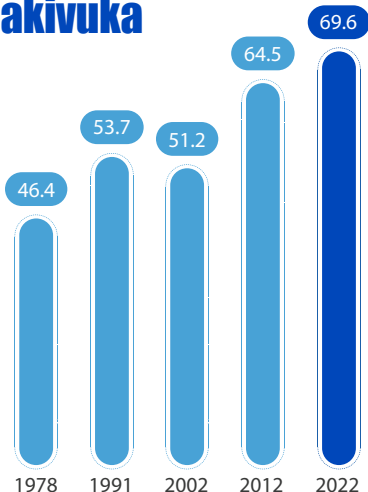




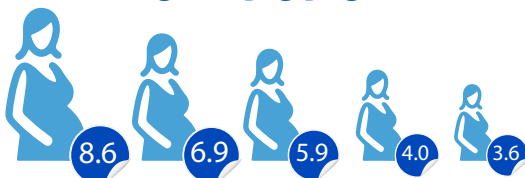
ICYIZERE CYO KUBAHO, UBURUMBUKE KU BAGORE NO KWIMUKA

Icyizere cyo kubaho umuntu akivuka

Abaturarwanda bafite icyizere cyo kubaho igihe kirekire kandi mu buzima bwiza



Uko igipimo cy'uburumbuke ku bagore cyagiye gihinduka

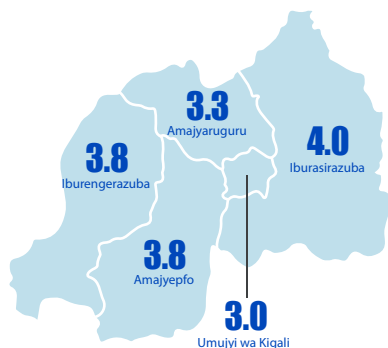


Year — 1978 — 1991 — 2002 — 2012 — 2022



Ibarura Rusange rya 2022 ryagaragaje ko igipimo cy'uburumbuke ku bagore bafite kuva ku myaka 15 y'amavuko kugeza kuri 49 ari 3.8 mu cyaro mu gihe ari 3.2 mu mujyi

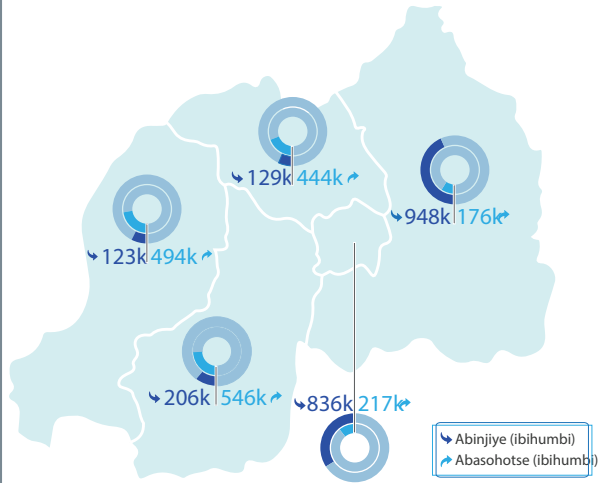
Igipimo cy'uburumbuke mu mwaka wa 2022 hakurikijwe intara



ABIMUTSE MU TURERE BAVUKIYEMO



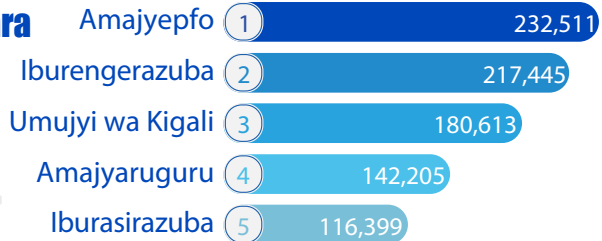
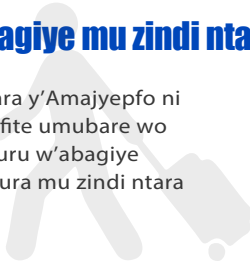
Intara y'Amajyepfo ni yo ifite umubare munini w'abaturage bayivuyemo bakajya gutura mu zindi ntara mu gihe Intara y'Iburasirazuba ari yo yakiriye abaturage benshi baje kuyitwamo baravukiye mu zindi ntara



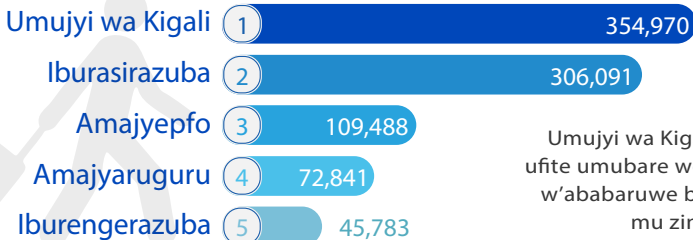
ABATUYE MU TURERE DUTANDUKANYE N'UTWO BARIBATUYEMO MBERE (MU MYAKA ITANU IBANZIRIZA IBARURA)

Abagiye mu zindi ntara

Intara y'Amajyepfo ni yo ifite umubare wo hejuru w'abagiye gutura mu zindi ntara



Abinjiye mu ntara



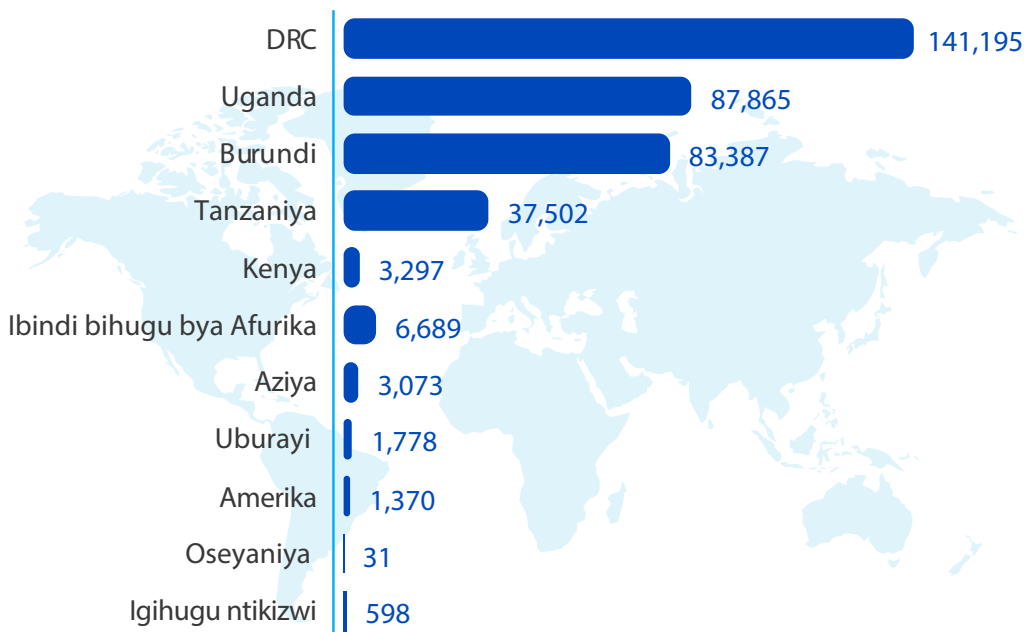
Umujyi wa Kigali ni wo ufite umubare wo hejuru w'ababaruwe baravuye mu zindi ntara



366,785 Bavukiye mu mahanga

65,762 Bari batuye mu mahanga (mu myaka 5 ibanziriza ibarura)

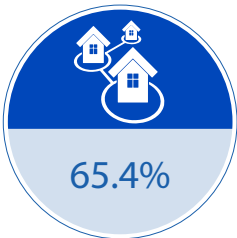
Abatuye mu Rwanda bavuye mu mahanga hakurikijwe igihugu bavukiyemo



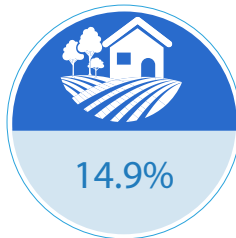


IMITERERE Y'IMITURIRE

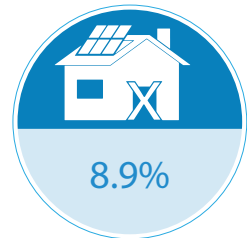
Umubare w'ingo zisanzwe hakurikijwe uburyo bw'imiturire



Umudugudu usanzwe



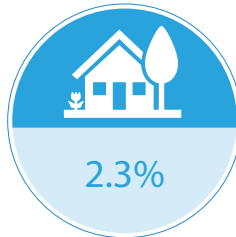
Uburyo bwitaruye
mu cyaro



Akajagari



Uburyo bukurikije
igishushanyombonera

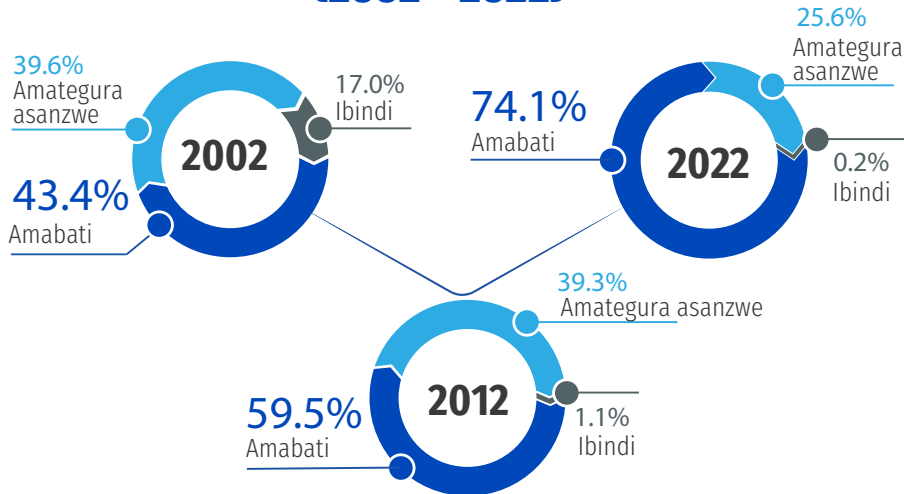


Urusisiro



Umudugudu
w'icyitegererezo

Uko imibare yagiye ihinduka ku rwego rw'igihugu (2002 – 2022)



Umubare w'ingo zisanzwe hakurikijwe ibisakaye inzu n'aho zihereye (mu cyaro cyangwa mu mujiyi)

Umujyi



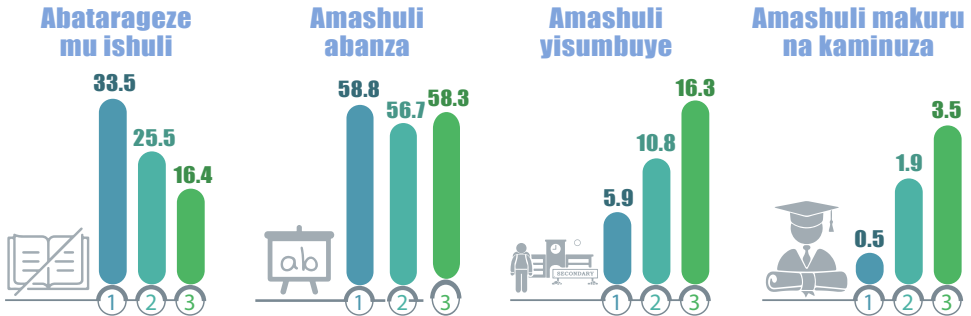
Icyaro





IBIPIMO BY'IMIBEREHO MYIZA N'UBUKUNGU

IMIBARE (%) Y'ABATURAGE BAGEZE MU ISHULI HAKURIKIJE ICYICIRO CY'AMASHULI CYO HEJURU BAGEZEMO N'UKO YAGIYE IHINDUKA (2002-2022)



Umwaka w'ibarura

①

2002

②

2012

③

2022

Igipimo rusange cy'abiga - GAR (%)
n'igipimo cy'abagomba kwiga - NAR (%)

Amashuri abanza
(Imyaka y' amavuko: 6-11)



141.7

89.3

Amashuri yisumbuye
(Imyaka y' amavuko: 12-17)



39.9

22.3

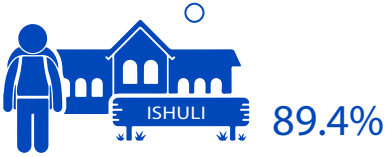
①

Igipimo rusange cy'abiga

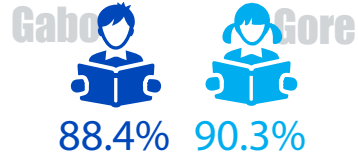
②

igipimo cy'abagomba kwiga

Ku rwego rw'igihugu



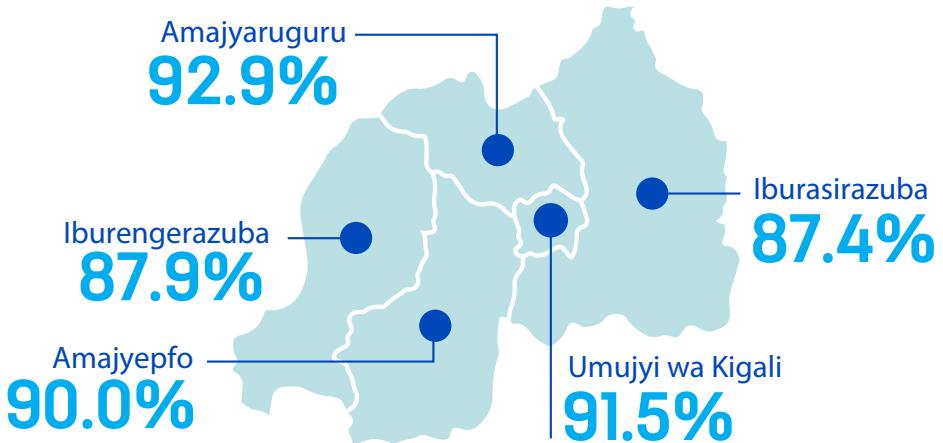
Hakurikijwe igitsina



Abari mu ishuli hakurikijwe aho batuye

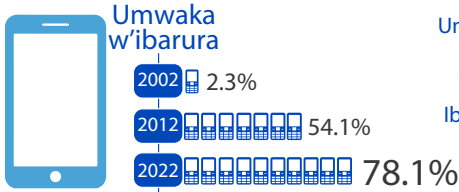


Abari mu ishuli hakurikijwe intara batuyemo

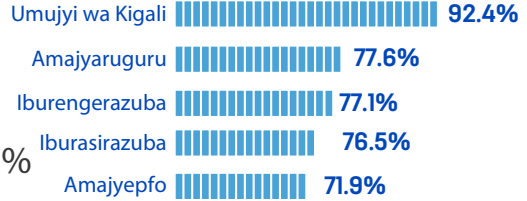


INGO ZISANZWE ZITUNZE TELEFONE NGENDANWA

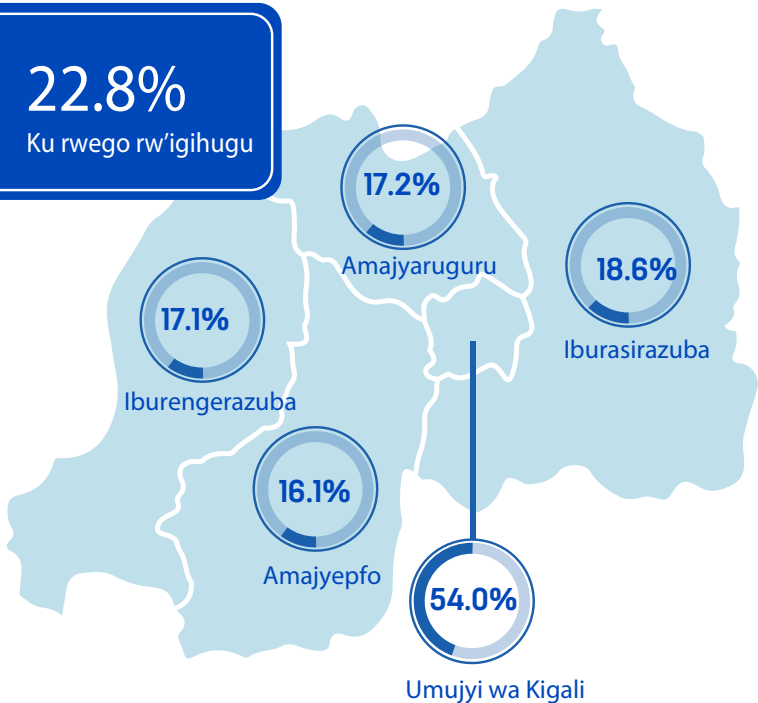
Ku rwego rw'igihugu



Hakurikijwe intara



Ingo zisanzwe zirimo nibura umuntu umwe mu bazigize wakoreshije interineti/murandasi mu mezi 12 abanziriza ibarura



UMUBARE W'INGO ZISANZWE HAKURIKIJE UBURYO BW'INGENZI BUKORESHWA MU KUBONESHA MU NZU



47.1%

Amashyamba ya REG



28.4%

Itoroshi/Itoroshi ya telephone



13.9%

Ingufu z'imirasire y'izuba



4.2%

Inkwi/Igishirira



2.9%

Buji



1.6%

Itara rya peteroli



1.3%

Moteri

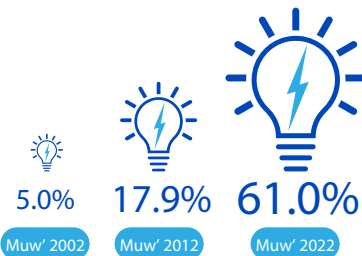


0.6%

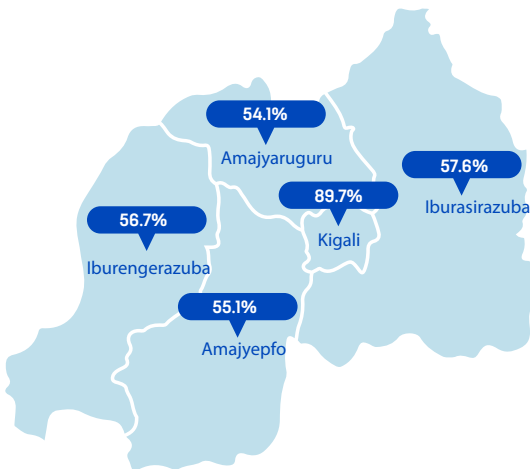
Ibindi

UMUBARE W'INGO ZISANZWE ZIKORESHA AMASHANYARAZI NK'UBURYO BW'INGENZI MU KUBONESHA MU NZU

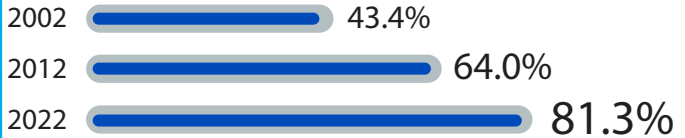
Ku rwego rw'igihugu



Hakurikijwe intara



UMUBARE (%) W'INGO ZITUNZE RADIIYO



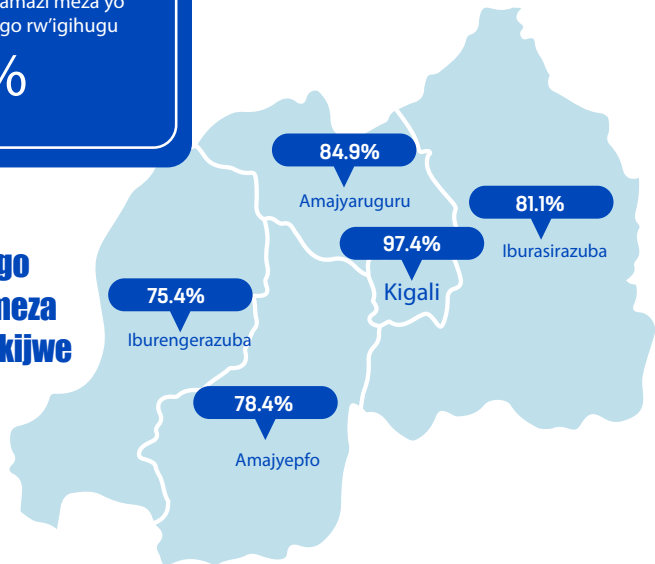
UMUBARE (%) W'INGO ZIKORESHA AMAZI MEZA YO KUNYWA



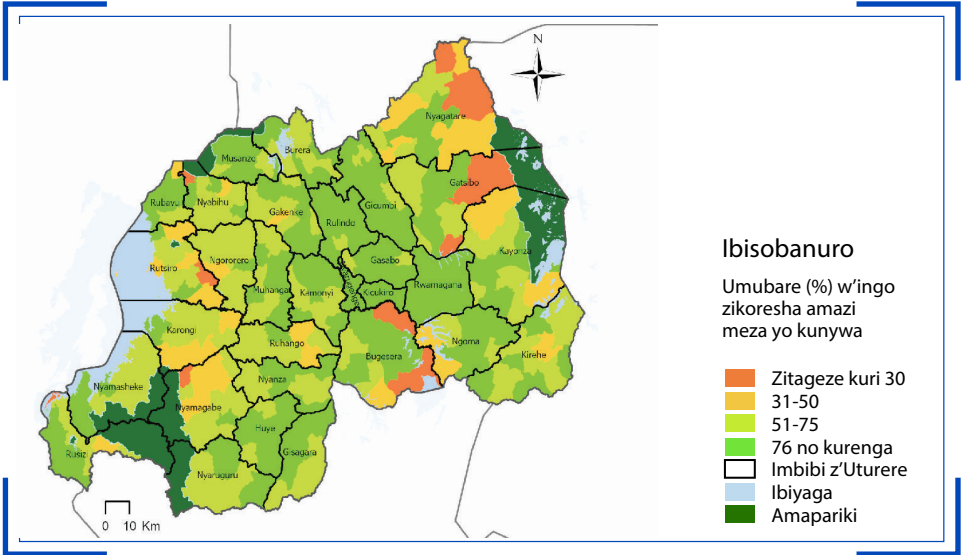
Ingo zikoresha amazi meza yo kunywa ku rwego rw'igihugu

82.3%

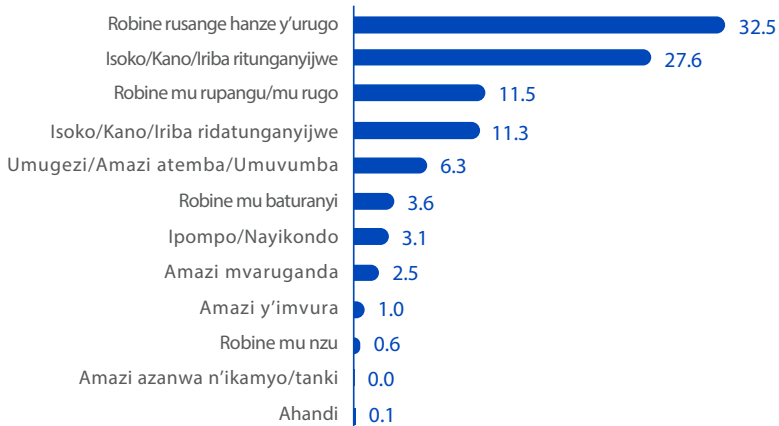
Umubare (%) w'ingo zikoresha amazi meza yo kunywa hakurikijwe intara



INGO ZIKORESHA AMAZI MEZA YO KUNYWA



Umubare (%) w'ingo hakurikijwe aho zikura amazi meza yo kunywa

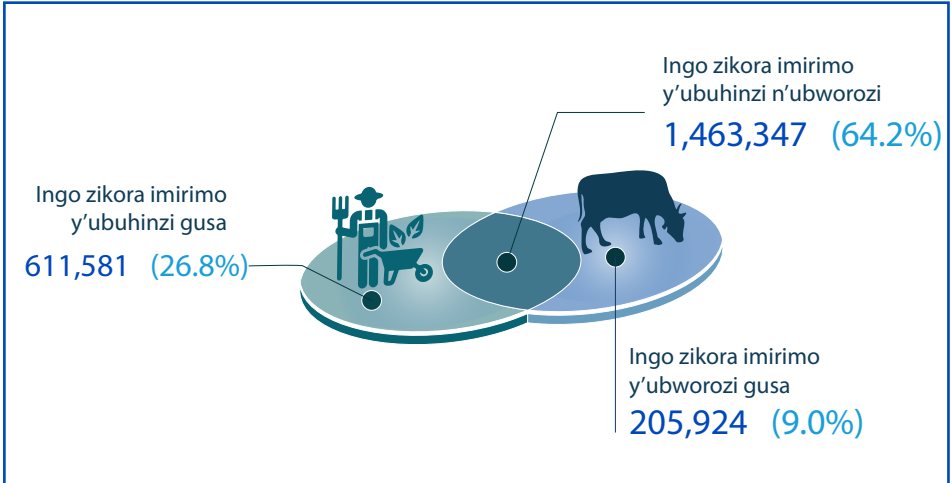


UBUHINZI



Ingo zikora imirimo y'ubuhinzi bw'ibiribwa cyangwa iy'ubworozi bw'amatungo

2,280,854 (69%)



Ingo zikora imirimo y'ubuhinzi n'ubworozi

1,463,347 (64.2%)

Ingo zikora imirimo y'ubuhinzi gusa

611,581 (26.8%)

Ingo zikora imirimo y'ubworozi gusa

205,924 (9.0%)

Igenzura ry'ubuziranenge bw'imibare y'ibarura:



Igipimo cy'ingo zabajijwe
(Net coverage rate)

98.7%



Igipimo cy'ingo zibagiranye
(Rate of erroneous inclusion)

0.2%

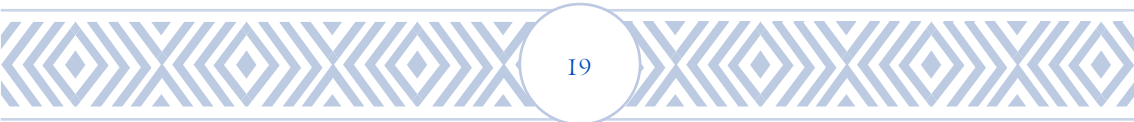
Umubare w'abaturage hakurikijwe aho batuye Icyaro/Umujyi, Intara n'Uturere

Intara/Uturere	Umubare			%		
	Bose hamwe	Umujyi	Icyaro	Bose hamwe	Umujyi	Icyaro
Rwanda	13,246,394	3,701,245	9,545,149	100	27.9	72.1
Umujyi wa Kigali	1,745,555	1,517,168	228,387	100	86.9	13.1
Nyarugenge	374,319	315,899	58,420	100	84.4	15.6
Gasabo	879,505	714,069	165,436	100	81.2	18.8
Kicukiro	491,731	487,200	4,531	100	99.1	0.9
Amajyepfo	3,002,699	444,106	2,558,593	100	14.8	85.2
Nyanza	365,718	33,765	331,953	100	9.2	90.8
Gisagara	397,051	13,513	383,538	100	3.4	96.6
Nyaruguru	318,126	7,641	310,485	100	2.4	97.6
Huye	381,900	79,744	302,156	100	20.9	79.1
Nyamagabe	371,501	40,592	330,909	100	10.9	89.1
Ruhango	359,121	39,079	320,042	100	10.9	89.1
Muhanga	358,433	87,252	271,181	100	24.3	75.7
Kamonyi	450,849	142,520	308,329	100	31.6	68.4
Iburengerazuba	2,896,484	640,307	2,256,177	100	22.1	77.9
Karongi	373,869	33,542	340,327	100	9.0	91.0
Rutsiro	369,180	20,606	348,574	100	5.6	94.4
Rubavu	546,683	294,448	252,235	100	53.9	46.1
Nyabihu	319,047	78,027	241,020	100	24.5	75.5
Ngororero	367,955	18,142	349,813	100	4.9	95.1
Rusizi	485,529	162,165	323,364	100	33.4	66.6
Nyamasheke	434,221	33,377	400,844	100	7.7	92.3
Amajyaruguru	2,038,511	353,729	1,684,782	100	17.4	82.6
Rulindo	360,144	38,110	322,034	100	10.6	89.4
Gakenke	365,292	14,788	350,504	100	4.0	96.0
Musanze	476,522	234,258	242,264	100	49.2	50.8
Burera	387,729	38,442	349,287	100	9.9	90.1
Gicumbi	448,824	28,131	420,693	100	6.3	93.7
Iburasirazuba	3,563,145	745,935	2,817,210	100	20.9	79.1
Rwamagana	484,953	180,056	304,897	100	37.1	62.9
Nyagatare	653,861	157,894	495,967	100	24.1	75.9
Gatsibo	551,164	55,351	495,813	100	10.0	90.0
Kayanza	457,156	65,071	392,085	100	14.2	85.8
Kirehe	460,860	29,039	431,821	100	6.3	93.7
Ngoma	404,048	37,297	366,751	100	9.2	90.8
Bugesera	551,103	221,227	329,876	100	40.1	59.9

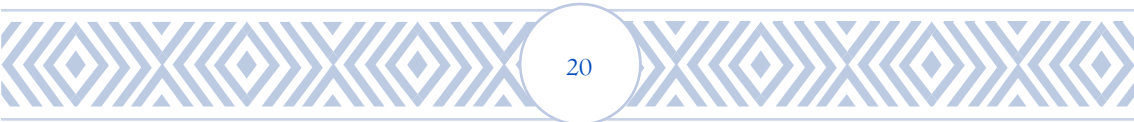
**Umubare w'Abaturage uteganyijwe (hagati mu mwaka)
mu myaka iri imbere (2022-2050)**

Umwaka	Ibipimo byo hasi	Ibipimo byo hagati	Ibipimo byo hejuru
2022	13,206,731	13,206,731	13,206,731
2023	13,498,611	13,499,134	13,499,656
2024	13,796,964	13,798,561	13,800,155
2025	14,101,706	14,104,965	14,108,214
2026	14,412,600	14,418,145	14,423,666
2027	14,729,313	14,737,803	14,746,250
2028	15,051,507	15,063,640	15,075,696
2029	15,378,830	15,395,339	15,411,725
2030	15,710,973	15,732,629	15,754,101
2031	16,047,669	16,075,281	16,102,628
2032	16,388,509	16,423,064	16,457,107
2033	16,733,030	16,775,708	16,817,301
2034	17,080,855	17,132,899	17,182,921
2035	17,431,549	17,494,219	17,553,613
2036	17,784,561	17,858,979	17,928,898
2037	18,139,264	18,226,565	18,308,202
2038	18,495,048	18,596,391	18,690,979
2039	18,851,722	18,968,311	19,077,155
2040	19,208,703	19,341,762	19,466,201
2041	19,565,308	19,716,059	19,857,454
2042	19,920,968	20,090,630	20,250,317
2043	20,275,332	20,465,139	20,644,388
2044	20,628,114	20,839,343	21,039,473
2045	20,978,999	21,212,882	21,435,255
2046	21,327,455	21,585,415	21,831,442
2047	21,673,212	21,956,640	22,227,792
2048	22,016,073	22,326,433	22,624,265
2049	22,355,932	22,694,774	23,020,951
2050	22,692,602	23,061,561	23,417,853
2051	23,025,978	23,426,776	23,815,071
2052	23,355,976	23,790,420	24,212,725

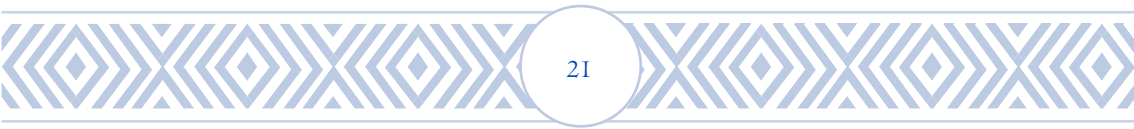
Handwriting practice lines consisting of 20 horizontal dashed lines.



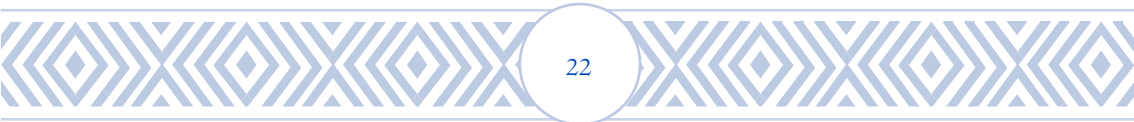
Handwriting practice lines consisting of 20 horizontal dashed lines.



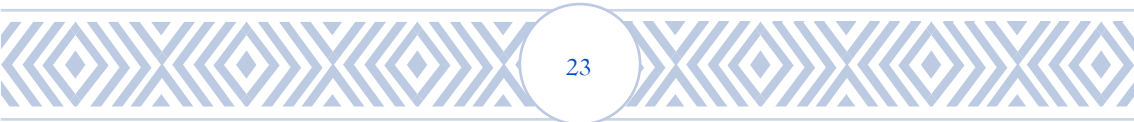
Handwriting practice lines consisting of 20 horizontal dashed lines.



Handwriting practice lines consisting of 20 horizontal dashed lines.



Handwriting practice lines consisting of 20 horizontal dashed lines.





European Union



WORLD BANK GROUP



GOVERNMENT OF RWANDA



UNFPA



unicef
unite for children



UN WOMEN



ECA



USAID



UKaid



Enabel



PARIS21



