



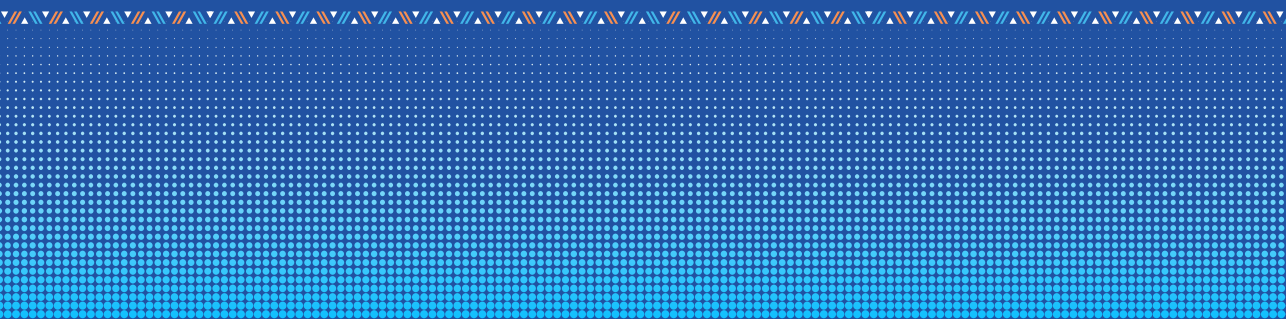
nisr

NATIONAL INSTITUTE OF
STATISTICS OF RWANDA



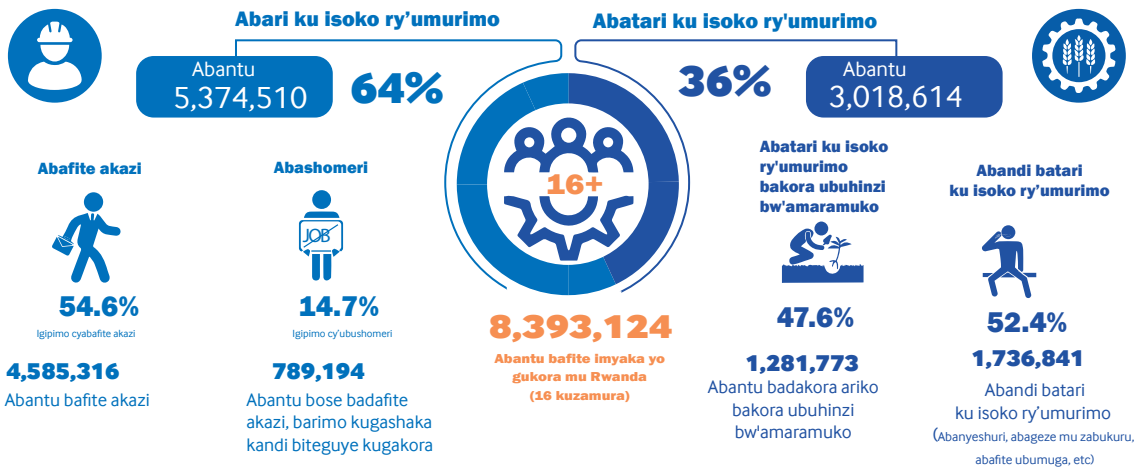
**INSHAMACYE Y' U
BUSHAKASHATSI KU BAKORA
N'ABASHOMERI MU RWANDA**

Igihembwe cya 4 - 2024

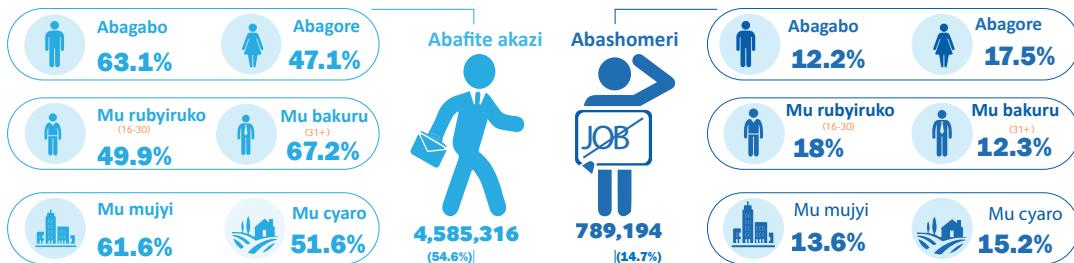


Inshamacye y'ubushakashatsi ku bakora n'abashomeri mu Rwanda 2024(Q4)

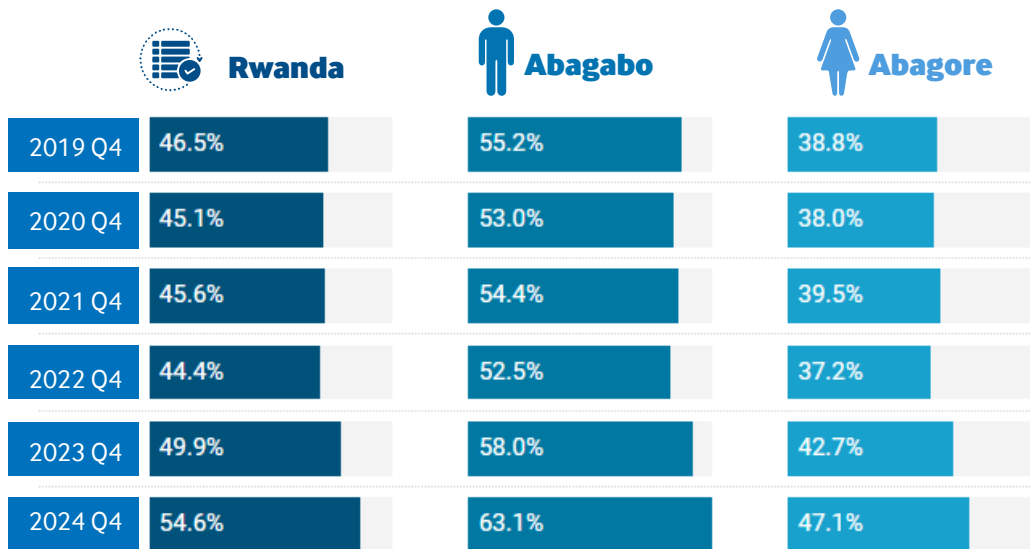
Incamake ku bipimo by'ingenzi



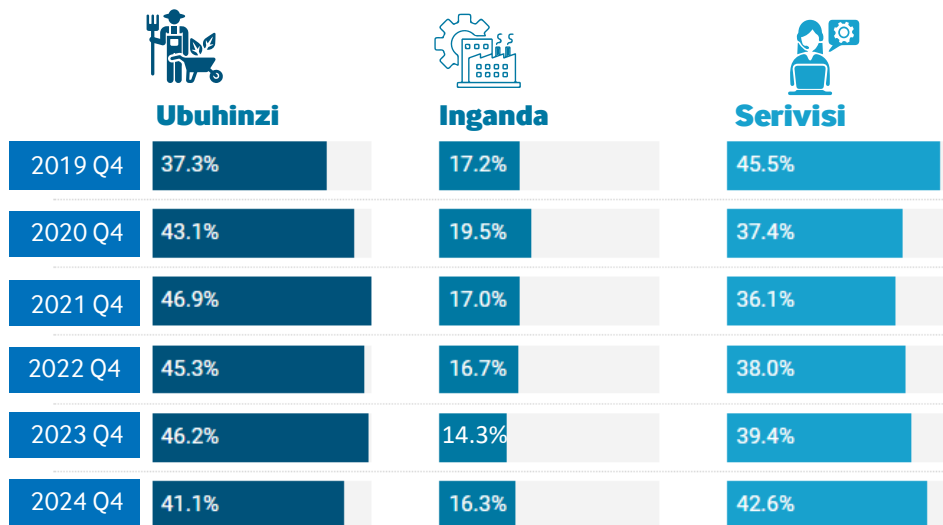
Ishusho ry'abafite akazi n'abashomeri mu byiciro bitandukanye



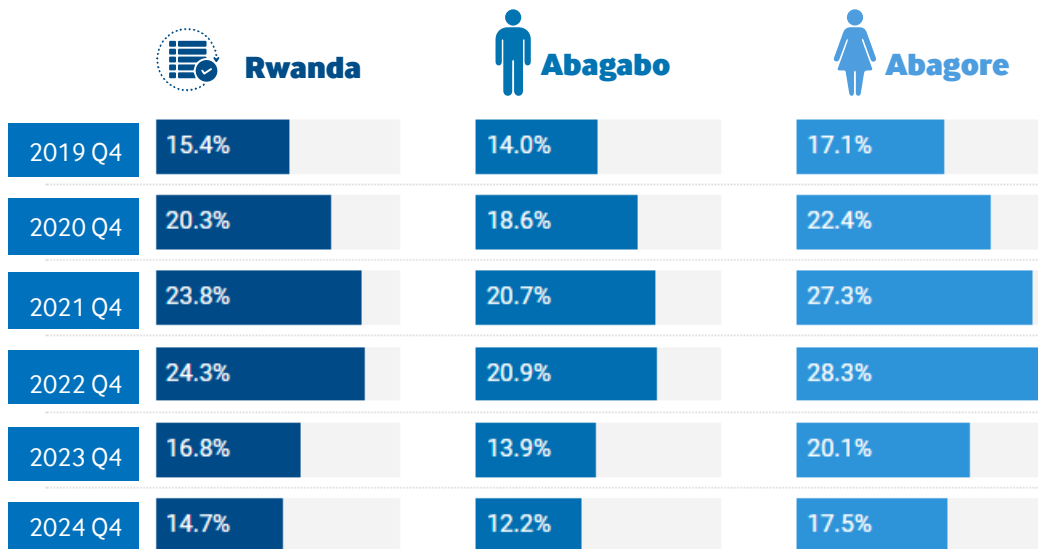
Ikigereranyo cy'abafite akazi ugendeye ku gitsina mu gihembwe cya 4 mu myaka itandukanye



Ikigereranyo cy'abafite akazi ugendeye ku byiciro bakoramo mu gihembwe cya 4 mu myaka itandukanye



Ikigereranyo cy'ubushomeri ugendeye ku gitsina mu gihembwe cya 4 mu myaka itandukanye



Abantu batabyazwa umusaruro uko bikwiye

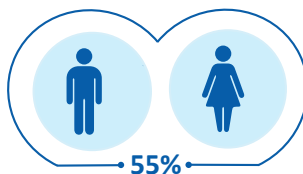
Muri rusange bagizwe



Abantu 3,660,136

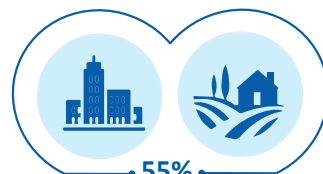
Abashomeri	Abakora amasaha macye	Abantu bashobora gukora ariko batashatse akazi
789,194	1,589,169	1,281,773

Abatabyazwa umusaruro ugendeye ku gitsina



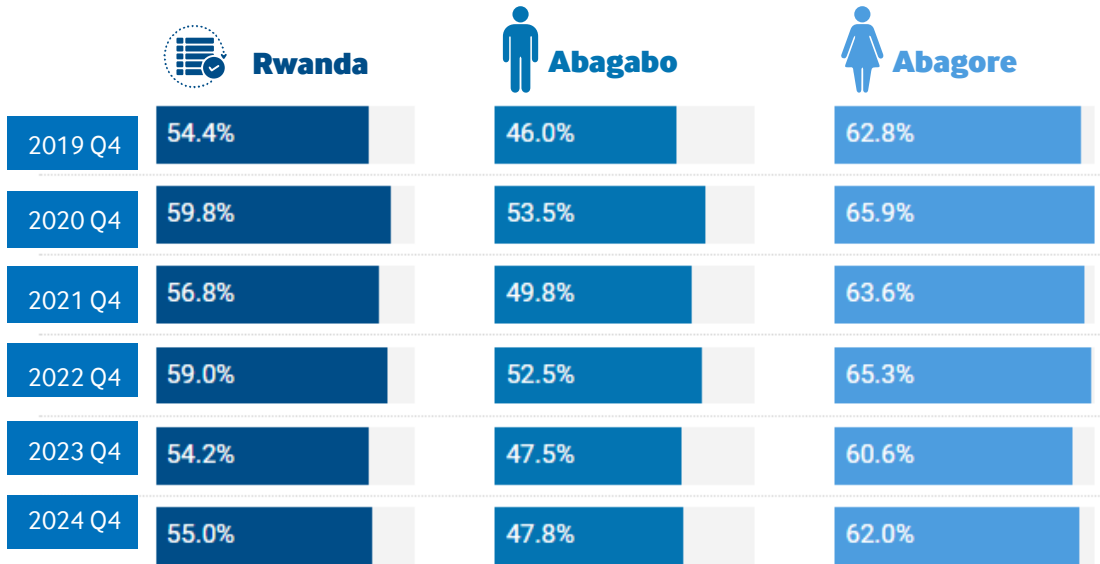
Abagabo	Abagore
47.8%	62%

Abatabyazwa umusaruro ugendeye aho batuye

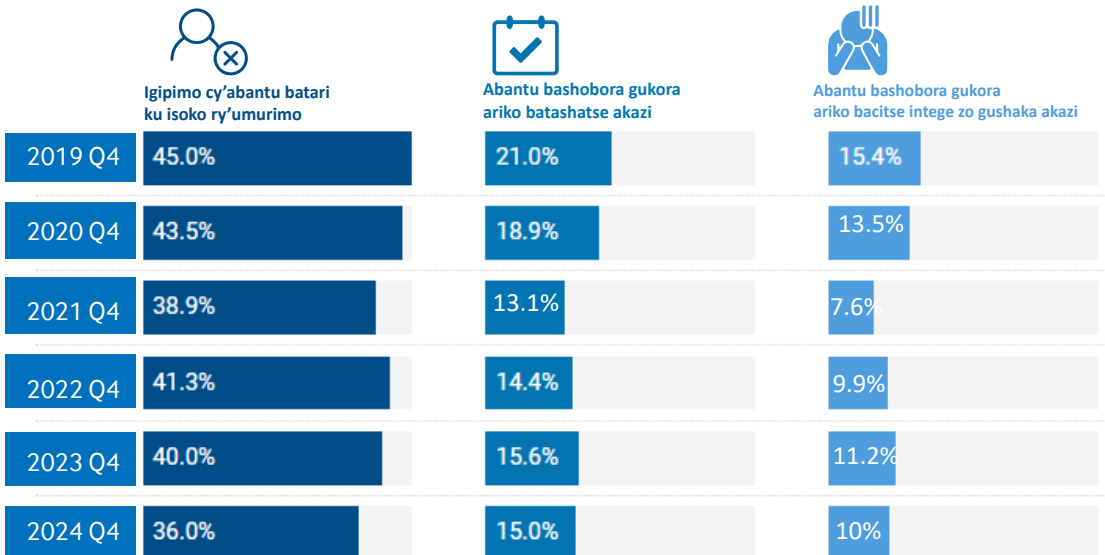


Umujiyi	Icyaro
44.1%	60%

Ikigereranyo cy'abantu batabyazwa umusaruro uko bikwiye mu gihembwe cya 4 mu myaka itandukanye



Ikigereranyo y'abantu batari ku isoko ry'umurimo mu gihembwe cya 4 mu myaka itandukanye



"If you Don't Count You Don't Coun't"



+250 788 38 3103



www.statistics.gov.rw



info@statistics.gov.rw