



REPUBLIC OF RWANDA



# DECEMBER 2024 INDEX OF INDUSTRIAL PRODUCTION (IIP)

*This is the monthly Index of Industrial Production (IIP). Series has been developed by the National Institute of Statistics of Rwanda (NISR) to provide more timely estimates of the broad trends of industrial output.*

December 2024

Index of  
Industrial  
Production  
(IIP)

February 2025

NATIONAL INSTITUTE OF STATISTICS OF RWANDA

## Monthly Index of Industrial Production – Formal Activity-December 2024

### 1. Introduction

This is the monthly Index of Industrial Production (IIP). The IIP, one of the core sets of economic indicators, enables to monitor the industrial performance overtime. The IIP has been developed by the National Institute of Statistics of Rwanda (NISR) to provide more timely estimates of the broad trends of industrial output. Highlights of IIP for December 2024 are given below.

The present report highlights the concept, and the methodology used in compilation of IIP. The results refer to the general index as well as to the sectorial indices (Manufacturing, Mining, Electricity, and Water & waste management). Although the scope of the IIP recommended by the United Nations Statistical Office (UNSO) includes mining and quarrying, manufacturing, construction, electricity, gas and water production and supply, this compilation exclude the construction activities due to constraints of data availability.

The IIP serves as a tool to measure the industrial production performance of the industries. It is a composite indicator that measures the short-term changes in the volume of production in each period with respect to a chosen base period. The index can be a tool to compare the performance and growth of state in the industrial sector.

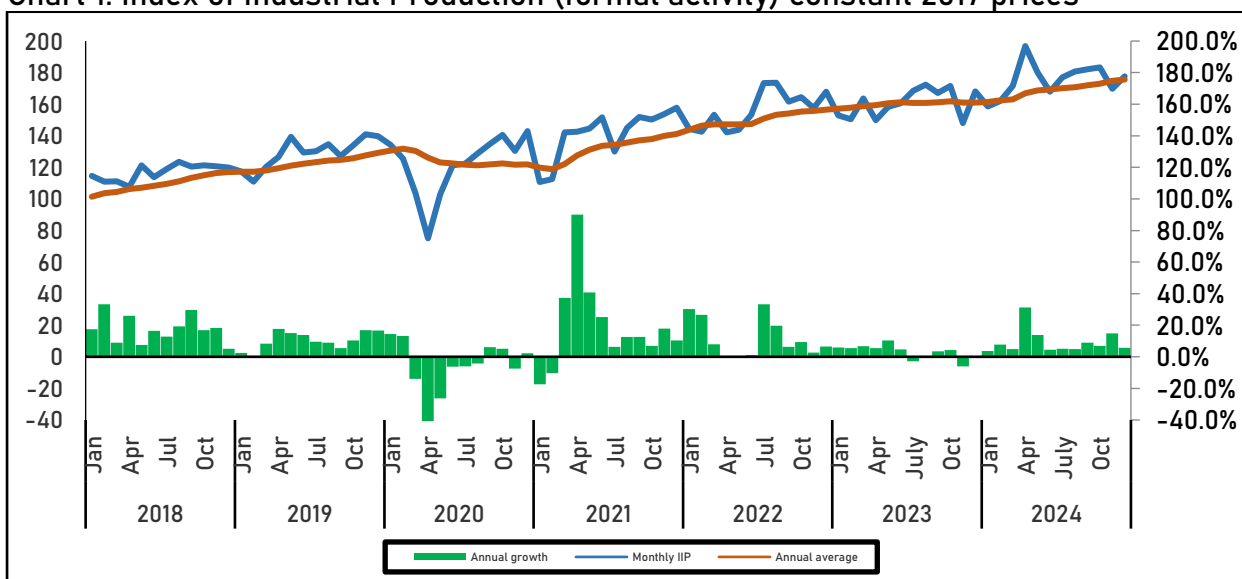
### 2. Highlights of IIP/ Summary

In December 2024, the industrial output (formal sector) increased by 5.7 percent compared to December 2024, against an increase of 9.0 percent on annual average basis.

Activities performed as follows:

- Mining and quarrying increased by 2.5 percent
- Manufacturing increased by 13.7 percent
- Electricity increased by 12.2 percent; and
- Water & waste management increased by 12.5 percent

Chart 1: Index of Industrial Production (formal activity) constant 2017 prices



Source: NISR/ Index of Industrial Production

### 3. Details

The output of manufacturing activities increased by 13.7 percent. The increase in manufacturing activities is due to a 10.5 percent increase in food processing and a 21.7 percent increase in manufacturing of beverages and tobacco products. However, manufacturing of textiles, clothing & leather decreased by 42.1 percent.

Table 1: Growth of sectors and their contributions to annual change

Activity	Weights	% Changes in December 2024			Contributions to annual change
		On November 2024	On December 2023	Annual average	
Mining and quarrying	13.0%	-28.9%	2.5%	-0.3%	0.1
Manufacturing of:					
<i>Food processing</i>	23.9%	0.7%	10.5%	13.7%	2.3
<i>Beverages and tobacco</i>	17.0%	20.2%	21.7%	2.9%	3.3
<i>Textiles, clothing &amp; leather goods</i>	4.5%	24.2%	-42.1%	-11.4%	-5.8
<i>Wood, paper; and printing</i>	2.6%	21.3%	19.1%	-0.2%	0.6
<i>Chemicals, rubber, &amp; plastic products</i>	5.7%	-25.0%	3.5%	15.8%	0.2
<i>Non-metallic mineral products</i>	5.1%	-0.7%	18.1%	9.2%	0.8
<i>Metal products, machinery &amp; equipment</i>	4.5%	17.6%	19.3%	13.8%	1.1
<i>Furniture and other manufacturing</i>	3.4%	28.7%	12.0%	1.4%	0.4
Electricity	18.9%	5.0%	12.2%	21.7%	2.5
Water & waste management	1.4%	2.1%	12.5%	11.2%	0.2
<b>General Index</b>	<b>100%</b>	<b>4.7%</b>	<b>5.7%</b>	<b>9.0%</b>	<b>5.7</b>

Source: NISR/ Index of Industrial Production

## Annexes

**Table 2: General Index of Industrial Production**

Month	2014	2015	2016	2017	2018	2019	2020	2021	2022	2023	2024
Jan	70.7	74.8	79.6	97.5	114.5	117.4	134.3	110.8	144.4	152.9	158.6
Feb	68.1	72.4	79.7	83.3	110.9	110.8	125.5	112.5	142.5	150.4	162.0
Mar	71.3	75.9	88.0	102.0	111.0	120.2	103.5	142.2	153.4	163.6	171.5
Apr	66.5	73.1	74.0	85.4	107.6	126.6	75.0	142.5	142.1	149.9	196.8
May	73.4	76.0	86.2	112.7	121.2	139.3	102.8	144.6	143.7	158.5	180.3
Jun	70.8	82.8	97.2	97.7	113.8	129.4	121.2	151.6	153.3	160.6	168.0
Jul	96.3	87.8	103.0	105.4	118.8	130.1	122.4	130.0	173.3	168.6	177.1
Aug	104.5	90.3	104.7	103.5	123.5	134.6	128.8	145.0	173.6	172.4	180.7
Sep	74.5	87.6	91.3	92.9	120.4	127.1	134.9	151.9	161.6	167.2	182.0
Oct	79.1	90.5	80.0	103.7	121.2	133.8	140.5	150.3	164.5	171.7	183.4
Nov	74.3	79.8	89.1	102.0	120.7	141.0	130.3	153.6	157.7	148.0	169.8
Dec	80.9	91.8	95.7	114.0	119.8	139.8	142.9	157.7	167.8	168.0	177.7

*Source: NISR/ Index of Industrial Production*

**Table 3: Index of Mining and quarrying**

Month	2014	2015	2016	2017	2018	2019	2020	2021	2022	2023	2024
Jan	68.5	66.5	69.9	95.4	84.9	70.4	141.9	42.6	44.4	50.2	66.8
Feb	66.5	65.4	70.7	75.0	80.7	63.1	125.3	38.6	38.6	64.8	58.4
Mar	69.1	65.2	75.8	113.8	68.5	53.9	64.0	43.6	30.8	66.1	75.0
Apr	60.9	64.1	60.8	70.9	68.8	82.0	33.2	56.4	27.8	64.9	54.4
May	66.6	62.9	72.9	140.0	80.0	103.0	28.1	47.2	67.8	78.2	51.5
Jun	65.6	70.3	92.6	80.8	60.3	52.2	70.2	91.1	73.7	60.7	52.6
Jul	120.1	80.5	105.1	119.0	54.4	65.2	53.3	19.7	93.9	58.9	74.8
Aug	133.7	85.5	102.7	109.0	59.3	81.4	41.7	67.3	90.9	60.8	48.2
Sep	67.4	80.8	85.9	88.1	67.2	98.2	49.8	103.9	49.3	68.5	69.4
Oct	74.5	90.4	65.2	120.4	60.8	121.7	46.3	69.8	86.2	79.0	75.8
Nov	72.9	71.8	88.8	99.4	63.2	179.7	49.9	44.7	94.4	61.3	89.0
Dec	66.7	83.1	88.4	88.4	70.8	131.9	35.7	44.8	116.7	61.7	63.3

*Source: NISR/ Index of Industrial Production*

**Table 4: Index of Manufacturing**

Month	2014	2015	2016	2017	2018	2019	2020	2021	2022	2023	2024
Jan	69.1	78.1	84.1	97.3	122.5	128.9	138.8	113.5	155.2	159.0	169.4
Feb	70.1	79.0	86.8	85.8	118.3	122.0	125.7	121.6	168.5	171.4	187.6
Mar	71.4	85.6	97.1	99.2	122.9	132.5	112.7	161.2	176.4	184.2	200.0
Apr	68.5	80.1	79.5	86.3	113.6	134.0	75.7	153.3	163.6	162.8	266.5
May	77.7	82.9	94.2	104.5	128.2	146.1	124.7	151.1	140.1	172.8	214.7
Jun	72.9	95.9	104.9	105.8	133.4	160.2	146.9	155.3	162.7	188.2	214.1
Jul	79.1	95.7	103.3	100.2	134.0	141.3	152.7	140.0	196.4	201.2	181.5
Aug	84.9	98.0	108.9	101.9	141.1	148.1	153.1	163.6	201.9	208.0	201.8
Sep	83.1	97.0	98.0	94.5	129.2	139.6	169.6	163.3	186.5	186.8	214.5
Oct	86.0	92.6	88.5	100.6	133.2	143.7	172.6	160.5	184.1	184.9	209.7
Nov	70.6	86.1	88.8	103.1	134.7	142.2	141.7	172.7	171.0	150.4	178.1
Dec	93.8	101.8	100.1	120.9	133.9	142.8	160.0	178.8	176.0	186.8	212.3

*Source: NISR/ Index of Industrial Production*

**Table 5: Index of Electricity**

Month	2014	2015	2016	2017	2018	2019	2020	2021	2022	2023	2024
Jan	75.5	80.7	92.2	94.7	105.4	115.2	118.9	126.9	143.4	164.8	194.8
Feb	66.5	73.3	84.3	88.2	99.4	106.6	116.2	116.3	135.6	155.0	158.1
Mar	73.8	77.9	93.2	100.1	109.4	116.3	118.2	133.8	154.9	173.1	172.9
Apr	74.0	79.9	91.1	96.1	100.5	114.1	98.2	132.5	149.6	159.6	172.8
May	76.7	90.5	96.1	102.3	112.1	121.6	114.7	136.0	153.1	176.5	196.1
Jun	75.2	76.2	90.7	97.0	110.2	115.4	115.6	140.6	149.9	137.3	188.5
Jul	75.6	83.4	91.0	102.7	115.3	122.4	124.3	139.3	153.4	136.9	195.4
Aug	76.1	81.6	96.2	105.4	116.0	123.1	126.1	139.4	160.5	137.5	213.6
Sep	73.7	79.3	90.7	101.7	111.8	119.9	123.1	142.0	156.6	135.2	202.9
Oct	79.1	86.6	95.8	105.8	116.5	121.4	129.0	149.2	161.9	156.7	209.0
Nov	81.1	85.0	93.8	101.6	109.8	116.6	127.4	138.2	156.1	178.1	195.3
Dec	78.6	83.9	97.0	104.4	111.7	120.5	130.5	141.5	152.3	182.8	205.1

Source: NISR/ Index of Industrial Production

**Table 6: Index of Water and Waste Management**

Month	2014	2015	2016	2017	2018	2019	2020	2021	2022	2023	2024
Jan	90.8	93.2	90.5	99.9	103.7	109.9	111.9	123.5	149.2	160.1	156.3
Feb	78.9	82.1	85.8	89.2	91.1	100.8	101.6	110.3	131.9	143.5	150.4
Mar	89.1	89.1	98.7	96.8	99.4	108.8	108.0	120.1	149.5	153.7	166.1
Apr	86.5	84.6	94.1	95.6	93.4	104.9	100.9	124.3	143.5	148.9	158.8
May	90.1	88.3	97.3	101.5	100.8	110.0	107.2	127.8	146.4	154.7	170.4
Jun	90.7	87.3	99.5	105.1	103.5	109.5	114.4	142.7	150.1	154.3	178.1
Jul	93.1	90.1	104.4	107.2	113.2	118.4	124.5	155.4	161.5	166.7	187.0
Aug	89.8	89.0	105.1	105.5	111.3	117.9	125.6	136.6	156.7	171.3	190.9
Sep	86.9	85.6	98.0	99.9	108.8	106.2	119.2	124.4	149.3	159.8	181.6
Oct	86.9	87.3	100.2	96.5	109.8	110.4	118.6	130.8	155.2	164.4	187.1
Nov	86.9	87.1	94.5	99.2	106.6	105.6	114.5	148.5	147.0	156.7	176.7
Dec	86.9	87.2	100.6	103.7	110.5	105.2	123.9	150.4	151.1	160.3	180.3

Source: NISR/ Index of Industrial Production

## Conceptual note on IIP compilation methodology in Rwanda

The Index of Industrial Production (IIP) is a statistical instrument used to monitor the monthly trends in output of industrial activities in Rwanda. It is developed based on a range of short term (monthly) indicators of economic activity.

The IIP series were developed since 2017, and the first publication was done in June 2019. In this publication a series from March 2011 have been compiled and availed to the public. Moreover, figures in this publication are the results of the 2017 rebasing exercise explained below in this note.

The IIP in this statistical release relates to the activity of businesses in the formal sector in Rwanda, defined as those registered with the tax authorities. The IIP series is entirely consistent with the quarterly estimates of Gross Value Added published by NISR, which still provide the most comprehensive and detailed assessment of economic activity.

### 2017 Rebasing

The National Institute of Statistics of Rwanda finalised new series that are based on the 2017 weights replacing old series based on 2014 weights. The International best practice recommends doing it at least once in five years but in Rwanda it is compiled every three years due to the availability of information collected at a higher frequency. Note that the series from 2017 are based on the 2017 weights. For the years before 2017, the growth rates of old series are preserved by dividing the published indices by the linking factors found in the Table 7.

The IIP is produced based on monthly indicators of the volume of economic activity for eleven Rwanda Classification of Products by Activity (RCPA). These are weighted together based on the gross value added in the reference year for the series (currently, 2017), consistent with the estimates of published value added within the Gross Domestic Product series, see Table 8.

The correspondence table between RCPA and ISIC (International Standard Industrial Classification) Revision 4 is shown in Table 9.

Table 7: Linking factors between old base and new base (linking year = 2017)

Activity	Linking factors
Mining and quarrying	1.29
Food processing	1.28
<i>Manufacturing of beverages and tobacco</i>	<i>1.00</i>
<i>Manufacturing of textiles, clothing, &amp; leather goods</i>	<i>2.25</i>
<i>Manufacturing of wood and paper; &amp; printing</i>	<i>1.18</i>
<i>Manufacturing of chemicals, rubber &amp; plastic products</i>	<i>1.62</i>
<i>Manufacturing of non-metallic mineral products</i>	<i>1.95</i>
<i>Manufacturing of metal products, machinery &amp; equipment</i>	<i>1.69</i>
<i>Furniture and other manufacturing</i>	<i>1.23</i>
Electricity	1.32
Water and waste management	1.14
General Index	1.29

Source: NISR/Index of Industrial Production

N.B:

- The series from 2017 are based on the new weights.
- For the years before 2017, the growth rates of old series are preserved by dividing the old series by the above linking factors.

Table 8: 2017 Gross Value Added

Activity	Gross Value Added (RWF, billions)	Percentage of total GVA
Mining & quarrying	57.4	13.0%
Manufacturing of food processing	105.8	23.9%
Manufacturing of beverages & tobacco	75.3	17.0%
Manufacturing of textiles, clothing & leather goods	19.9	4.5%
Manufacturing of wood & paper; printing	11.5	2.6%
Manufacturing of chemicals, rubber & plastic products	25.0	5.7%
Manufacturing of non-metallic mineral products	22.4	5.1%
Manufacturing of metal products, machinery & equipment	20.0	4.5%
Furniture & other manufacturing	15.0	3.4%
Electricity	83.6	18.9%
Water & waste management	6.2	1.4%
<b>Total</b>	<b>442.1</b>	<b>100.0%</b>

Source: NISR/Index of Industrial Production

Table 9: Matching table between Rwanda Products Classification by Activity (RPCA) and International Standard Industrial Classification Revision 4 (ISIC Rev 4)

RPCA (Rwanda Classification of Products by Activity)			ISIC Rev.4 (here R stands for Rwanda)		
Code	Level	Description	Code	Code1	Description
B	2	Mining and quarrying	R	RB	Mining and quarrying
CA	4	Manufacturing of food	RC	RC10	Manufacture of food products
CB	4	Manufacturing of beverages & tobacco	RC	RC11	Manufacture of beverages
			RC	RC12	Manufacture of tobacco products
CC	4	Manufacturing of textiles, clothing & leather goods	RC	RC13	Manufacture of textiles
			RC	RC14	Manufacture of wearing apparel
			RC	RC15	Manufacture of leather and related products
CD	4	Manufacturing of wood & paper; printing	RC	RC16	Manufacture of wood and of products of wood and cork, except furniture; Manufacture of articles of straw and plaiting materials
CD	4	Manufacturing of wood & paper; printing	RC	RC17	Manufacture of paper and paper products
			RC	RC18	Printing and reproduction of recorded media
CE	4	Manufacturing of chemicals, rubber & plastic products	RC	RC19	Manufacture of coke and refined petroleum products
			RC	RC20	Manufacture of chemicals and chemical products
			RC	RC21	Manufacture of pharmaceuticals, medicinal chemical and botanical products
			RC	RC22	Manufacture of rubber and plastics products
CF	4	Manufacturing of non-metallic mineral products	RC	RC23	Manufacture of other non-metallic mineral products
CG	4	Manufacturing of metal products, machinery & equipment	RC	RC24	Manufacture of basic metals
			RC	RC25	Manufacture of fabricated metal products, except machinery and equipment
			RC	RC26	Manufacture of computer, electronic and optical products
			RC	RC27	Manufacture of electrical equipment
			RC	RC28	Manufacture of machinery and equipment n.e.c.
			RC	RC29	Manufacture of motor vehicles, trailers and semi-trailers
CH	4	Furniture & other manufacturing	RC	RC30	Manufacture of other transport equipment
			RC	RC31	Manufacture of furniture
			RC	RC32	Other manufacturing
D	2	Electricity	RD	RD35	Electricity, gas, steam and air conditioning supply
E	2	Water & waste management	RE	RE36	Water collection, treatment and supply

Source: NISR/ Index of Industrial Production



For more information, please contact:

Contacts:

NATIONAL INSTITUTE OF STATISTICS OF RWANDA (NISR),

P.O. BOX 6139 Kigali,

Tel.: (+250) 788383103

Web site: [www.statistics.gov.rw](http://www.statistics.gov.rw);

E-mail: [info@statistics.gov.rw](mailto:info@statistics.gov.rw);