



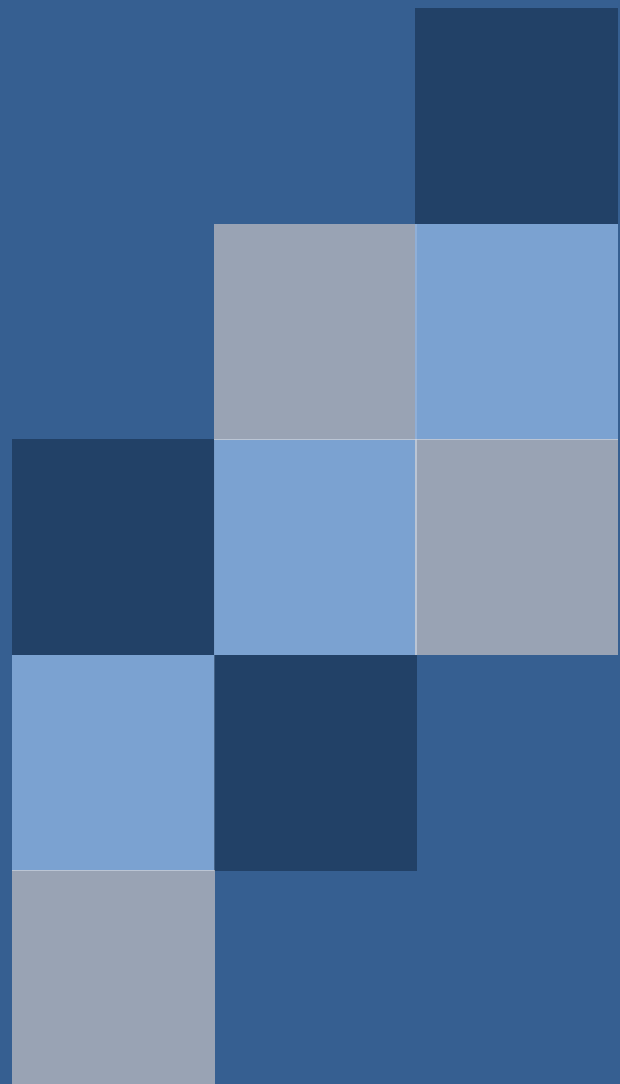
THE REPUBLIC OF RWANDA



Fourth Population and Housing Census, Rwanda, 2012

District Profile

# Kamonyi





THE REPUBLIC OF RWANDA



Ministry of Finance and Economic Planning  
National Institute of Statistics of Rwanda

## Fourth Population and Housing Census, Rwanda, 2012

### District Profile

### Kamonyi

January 2015



The Fourth Rwanda Population and Housing Census (2012 RPHC) was implemented by the National Institute of Statistics of Rwanda (NISR). Field work was conducted from August 16<sup>th</sup> to 30<sup>th</sup>, 2012. The funding for the RPHC was provided by the Government of Rwanda, World Bank (WB), the UKAID (Former DFID), European Union (EU), One UN, United Nations Population Fund (UNFPA), United Nations Development Programme (UNDP), United Nations Children's Fund (UNICEF) and UN Women.

Additional information about the 2012 RPHC may be obtained from the NISR:  
P.O. Box 6139, Kigali, Rwanda; Telephone: (250) 252 571 035  
E-mail: [info@statistics.gov.rw](mailto:info@statistics.gov.rw); Website: <http://www.statistics.gov.rw>.

Recommended citation:

National Institute of Statistics of Rwanda (NISR), Ministry of Finance and Economic Planning (MINECOFIN) [Rwanda]; 2012. Rwanda Fourth Population and Housing Census.

**District Profile: Kamonyi**

## FOREWORD

The undertaking of Population Censuses in Rwanda goes back to the year 1978 where the first ever Census was implemented. The second and third censuses were carried out in 1991 and 2002. The 2012 Census marks the Fourth in the series. It is undoubtedly that Census information, particularly if made available on a regular basis, is indispensable for planning, policy development, evaluation and for research purposes.

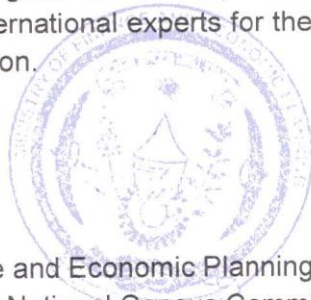
The final results of the 2012 Census are published in the form of statistical tables and analytical thematic reports. Generally, the results provide population counts down to the lowest administrative level, as well as demographic and socioeconomic indicators at both national and district levels. I recommend that such invaluable information contained in the census results be used as updated benchmarks for all development planning, and in monitoring and evaluation of Rwanda's development goals.

On this occasion, I would like to seize this opportunity to thank His Excellency the President of the Republic of Rwanda for his direct support to the census, the Government of Rwanda and development partners for providing the required resources for conducting the 2012 Census. Special gratitude goes to One UN, the European Union (EU), the United Nations Population Fund (UNFPA), the World Bank (WB), the United Kingdom AID (UKAID-formerly DFID), UN Women and UNICEF.

I would also like to thank all members of the National Census Commission and the Census Technical Committee for their able guidance of the entire Census operation. The National Institute of Statistics of Rwanda (NISR) deserves special appreciation for the successful implementation of this huge statistical undertaking and releasing the final results on time.

Special gratitude goes to all respondents, field staff from NISR and other government institutions and international experts for their sincere cooperation and dedication to successfully complete the mission.

  
**Claver GATETE**



Minister of Finance and Economic Planning, and  
Chairperson of the National Census Commission



## ACKNOWLEDGEMENTS

The National Institute of Statistics of Rwanda (NISR) is pleased to release the final results of the Fourth Population and Housing Census (PHC4). The execution of different Census phases: preparatory works, data collection, data processing, tabulation and data analysis continued for about four years -- between 2010 and 2013.

NISR has published several Census analytical reports to be of direct help to policy makers, planners, local authorities and other users. The reports have dealt with several issues from population size and distribution, education, settlement, labour, population projections to mention but a few. NISR hopes that the analytical reports would meet the demand of Census data users at central and local levels.

On this occasion, I would like to pay our sincere gratitude to the President of the Republic of Rwanda for the Presidential Decree No. 02/01 of 07/02/2011 organizing the 4<sup>th</sup> Population and Housing Census and the Minister of Finance and Economic Planning the Chairperson of the National Census Commission for the Ministerial Order No. 001/12/10/TC of 19/01/2012 determining the administrative structure and technical organization of the 2012 Population and Housing Census. These legal instruments laid a solid foundation for all activities that followed without which not much could be achieved.

I also take this opportunity to thank the National Census Commission, the Branches of the Commission at Province and District levels and the Census Technical Committee whose invaluable guidance and advice enabled carrying out Census operations in a highly professional and timely manner.

My greatest gratitude extends to the Government of Rwanda and development partners for availing logistical and technical support.

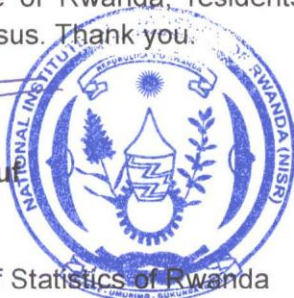
Special recognition goes to the Ministries of Defense, Local Government, Education, Internal Security, Foreign Affairs, the National Police and National Correctional Services for the direct involvement in field data collection operations.

I also wish to express my appreciation to the local government authorities and NISR staff for their excellent operational organization and to the tens of thousands of enumerators and supervisors for their painstaking efforts throughout the data collection phase.

Finally, the people of Rwanda, residents and visitors your cooperation was crucial for the success of the census. Thank you.

  
**MURANGWA Yusu**

Director General,  
National Institute of Statistics of Rwanda





## Table of Content

Foreword.....	i
Acknowledgement.....	iii
LIST OF TABLES.....	vii
LIST OF FIGURES.....	xi
Chapter 1: Population Size, Spatial Distribution, and Structure.....	1
1.1. Size and Spatial Distribution of the Population.....	1
1.1.1 Size and Spatial Distribution of the Population of the Southern Province.....	1
1.1.2 Size and Spatial Distribution of the Population of Kamonyi district.....	3
1.1.3 Size and Spatial Distribution of the Population of Kamonyi district by residence area.....	5
1.1.4 Size and Spatial Distribution of the Population of Kamonyi district.....	6
Chapter 2: Characteristics of the population.....	9
2.1. Socio-cultural characteristics of the population.....	9
2.2. Marital Status.....	11
Chapter 3: Sub-Population.....	21
3.1. Children (0-17 years).....	21
3.2. Persons with Disabilities.....	32
3.3. Elderly Population.....	33
Chapter 4: Households and Housing Characteristics.....	36
4.1. Households Characteristics.....	36
4.2. Housing Characteristics.....	38
ANNEXES.....	60





## List of Tables

Table 1: Distribution (count) of the resident population of Southern Province in 2012 by district, Sex and density .....	1
Table 2: Distribution (count) of the resident population in Kamonyi district in 2012 by Sector, Sex .....	3
Table 3: Distribution (count and %) of the resident population of Kamonyi district by Sector and Area of Residence. ....	5
Table 4: Distribution (count and %) of the resident population of Kamonyi district by 5-year age group and sex.....	6
Table 5: Number and population share (%) of some specific interventions targeted groups in Kamonyi district by sex .....	8
Table 6: Distribution (count and %) of the resident population of Kamonyi district by Nationality and Sector.....	9
Table 7: Distribution (count and %) of the resident population of Kamonyi district by Religious Affiliation and residence areas.....	10
Table 8: Distribution (%) of the resident population of Kamonyi district aged 12 years and above by Marital status and Sector .....	11
Table 9: Distribution (%) of the resident population of Kamonyi district aged 12 years and above by marital status, Age groups and Sex [Both sexes].....	12
Table 10: Distribution (count and %) of the school-age population of Kamonyi district by Sector, School attendance status and by Sex (Both sexes) .....	13
Table 11: Gross and Net Attendance Rate (%) in Primary School of Kamonyi district by Sex and Sector .....	15
Table 12: Gross and Net Attendance Rate (%) in Secondary School of Kamonyi district by Sex and Sector .....	16
Table 13: Distribution (count and %) of the resident population of Kamonyi district aged 3 years and above by Highest level of educational attainment and Sector (Both sexes).....	17
Table 14: Labour-force participation rate (%) among the resident population aged 16 years and above by sex, Southern Province, district and area of residence .....	18
Table 15: Unemployment rate (%) among the active population aged 16 years and above in Southern Province by sex, district and area of residence.....	20
Table 16: Number and share (%) of children aged 0-17 years among the total resident population of Kamonyi district by sex and sector of residence .....	21
Table 17: Percentage of the children aged 0-17 in Southern Province whose birth was registered by sex, district and area of residence .....	22
Table 18: Percentage of the children aged 0-17 in Kamonyi district whose birth was registered by sex, Sector and area of residence .....	23
Table 19: Percentage of children aged 5-17 years currently employed by age group and sex, and by district .....	24
Table 20: Percentage of children aged 5-17 years currently employed by age group and sex and by sector in Kamonyi district .....	25
Table 21: Number and share (%) of the resident youth aged 14-35 years among the total resident population in Kamonyi district by Sector of residence and sex (Both sexes).....	27
Table 22: Distribution (count and %) of the resident youth of Kamonyi district aged 14-35 years by Sector of residence and school attendance status (Both sexes).....	28

Table 23: Distribution (count and %) of the youth population of Kamonyi district aged 14-35 years by Sector of residence and highest level of education attained (Both sexes) 29	
Table 24: Distribution (count and %) of the resident youth of Kamonyi district aged 14-35 years by economic activity status and sex, and by sector of residence.....	30
Table 26: Number and share (%) of persons with disabilities of Kamonyi district aged 5 years and above (Prevalence of disabilities) by Sector of residence and sex .....	32
Table 27: Number and share (%) of the resident elderly (aged 60 years and above) among the total resident population in Kamonyi district by Sector of residence and sex.	33
Table 28: Distribution (count) of the elderly resident (aged 60 years and above) by economic activity status and sex, and by sector of residence .....	34
Table 29: Distribution (%) of the elderly resident (aged 60 years and above) in Kamonyi district by sector of residence and marital status (Both sexes) .....	35
Table 30: Number of private households of Kamonyi district and their corresponding population by Sector and mean size of private households.....	36
Table 31: Distribution (count and %) of private households' heads in Kamonyi district by Sector and sex.....	37
Table 32: Distribution (count and %) of the private households in Kamonyi district by type of habitat and Sector.....	38
Table 33: Distribution (%) of private households in Kamonyi district by tenure of housing units and by Sector .....	40
Table 34: Distribution (count and %) of private households of Kamonyi district by main material of the roof of the housing units and by Sector .....	42
Table 35: Distribution (count and %) of private households of Kamonyi district by main material of the walls and by Sector .....	44
Table 36: Distribution (count and %) for private households of Kamonyi district by main source of energy for lighting and by Sector.....	46
Table 37: Distribution (count and %) of private households of Kamonyi district by main source of energy for cooking and by Sector .....	48
Table 38: Distribution (count and %) of private households of Kamonyi district by main source of water and by Sector .....	50
Table 39: Distribution (count and %) of private households in Kamonyi district by main type of toilet facility and by Sector .....	53
Table 40: Distribution (count and %) of private households in Kamonyi district by mode of waste disposal and by Sector .....	55
Table 41: Percentage of private households of Kamonyi district possessing communication assets by Sector .....	57
Table 42: Percentages of private households of Kamonyi district that have access to the Internet by place of access .....	58
Table 43: Distribution (count and %) of the resident population of Kamonyi district by Single age and Sex .....	60
Table 44: Distribution (count and %) of the resident population of Kamonyi district by 5-year age group and sex.....	63
Table 45: Distribution (Count) of the resident population of Kamonyi district aged 12 years and above by Marital status, Sector and Sex [Male] .....	75
Table 46: Distribution (%) of the resident population of Kamonyi district aged 12 years and above by Marital status, Age groups and Sex [Female] .....	77

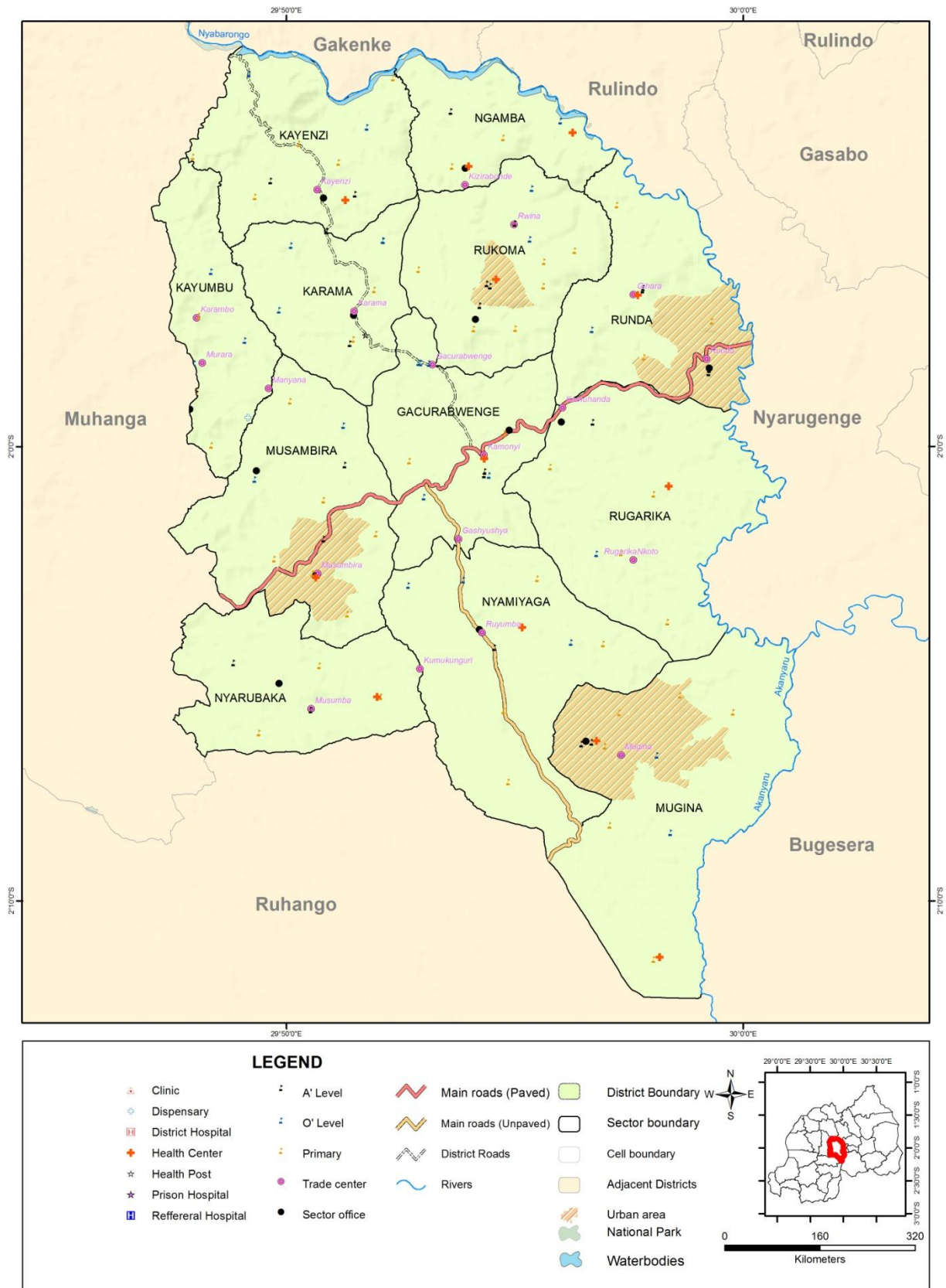
Table 47: Distribution (count and %) of the resident population in Kamonyi district aged 12 years and above by Marital status, Age groups and Sex [Male, Female] .....	79
Table 48: Distribution (count and %) of the school-age population of Kamonyi district by Sector and by School attendance status and Sex (Male) .....	80
Table 49: Distribution (count and %) of the school-age population of Kamonyi district by Sector and by School attendance status and Sex (Female) .....	81
Table 50: Distribution (count and %) of the resident population of Kamonyi district aged 3 years and above by Highest level of educational attainment and Sector (Male) ..	83
Table 51: Distribution (%) of the resident population of Kamonyi district aged 3 years and above by Highest level of educational attainment and Sector (Female) .....	84
Table 52: Distribution (%) of the resident population of Kamonyi district aged 16 years and above by Economic activity status and Sector (both sexes) .....	85
Table 53: Distribution (count and %) of the resident population of Kamonyi district aged 16 years and above by Economic activity status and Sector (Male) .....	86
Table 54: Distribution (%) of the resident population of Kamonyi district aged 16 years and above by Economic activity status and Sector (Female) .....	87
Table 55: Distribution (count and %) of private households in Kamonyi district by main source of water and by Sector .....	88
Table 56: Distribution (count and %) of private households in Kamonyi district by main type of sanitation facilities and by Sector of residence .....	89



**LIST OF FIGURES**

Figure 1: Administrative map of Kamonyi district .....	xii
Figure 2: Population Density (Inhabitants per square km) by district in Southern Province .....	2
Figure 3: Population Density of Kamonyi District by Sector in 2012 .....	4
Figure 4: Age pyramid of the resident population of Kamonyi District in 2012 .....	7
Figure 5: Labour-force participation rate (LFPR) among the resident population in the private households aged 5 years and above by age and by sex .....	19
Figure 6: Employed among children aged 5-9 years by district in Southern province .....	25
Figure 7: Distribution (%) of the private households of Kamonyi District by type of habitat and by Area of residence .....	39
Figure 8: Distribution (%) of the private households of Kamonyi District by tenure of the housing and area of residence .....	41
Figure 9: Distribution (%) of the private households of Kamonyi District by main material of the roof and of the housing unit and by area of residence .....	43
Figure 10: Distribution (%) of the private households of Kamonyi District by main material of the walls of the housing unit and by area of residence .....	45
Figure 11: Distribution (%) of the private households of Kamonyi District by main source of energy for lighting and by area of residence .....	47
Figure 12: Distribution (%) of the private households of Kamonyi District by main source of energy for cooking and by area of residence .....	49
Figure 13: Distribution (%) of the private households of Kamonyi District by improved and unimproved source of water and by Sector .....	51
Figure 14: Distribution (%) of the private households of Kamonyi District by main source of water and by area of residence .....	52
Figure 15: Distribution (%) of the private households of Kamonyi District by main type of toilet facility and by area of residence .....	54
Figure 16: Distribution (%) of the private households of Kamonyi District by mode of waste disposal and by area of residence .....	56
Figure 17: Percentage of private households who's at least one member have access to the Internet from home, office/school, cyber café and other by area of residence .....	59

Figure 1: Administrative map of Kamonyi district



## Chapter 1: Population Size, Spatial Distribution, and Structure

### 1.1. Size and Spatial Distribution of the Population

#### 1.1.1. Size and Spatial Distribution of the Population of the Southern Province

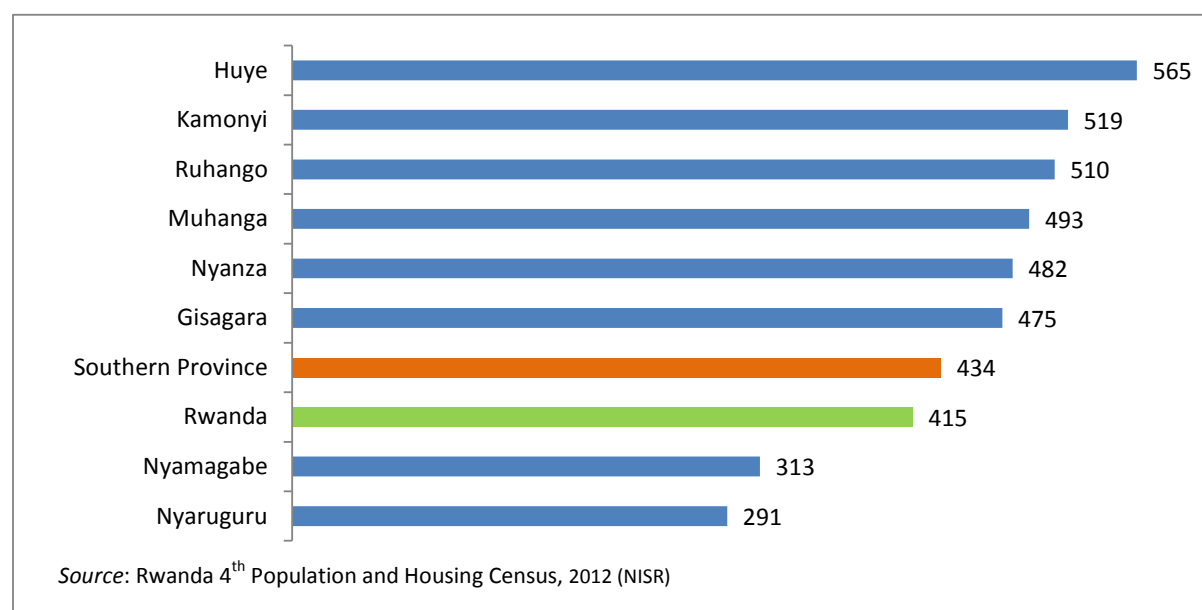
Table 1: Distribution (count) of the resident population of Southern Province in 2012 by district, Sex and density

District	Both sexes	Male	Female	% Female	Population share (% of the total population)	Density (Inhabitants per square km)
<b>Rwanda</b>	<b>10,515,973</b>	<b>5,064,868</b>	<b>5,451,105</b>	<b>51.8</b>		<b>415</b>
<b>Southern Province</b>	<b>2,589,975</b>	<b>1,233,754</b>	<b>1,356,221</b>	<b>52.4</b>	<b>100</b>	<b>434</b>
Nyanza	323,719	157,650	166,069	51.3	12.5	482
Gisagara	322,506	150,455	172,051	53.3	12.5	475
Nyaruguru	294,334	139,279	155,055	52.7	11.4	291
Huye	328,398	158,104	170,294	51.9	12.7	565
Nyamagabe	341,491	161,219	180,272	52.8	13.2	313
Ruhango	319,885	152,075	167,810	52.5	12.4	510
Muhanga	319,141	152,783	166,358	52.1	12.3	493
<b>Kamonyi district</b>	<b>340,501</b>	<b>162,189</b>	<b>178,312</b>	<b>52.4</b>	<b>13.1</b>	<b>519</b>

Source: Rwanda 4th Population and Housing Census, 2012 (NISR)

- The 4<sup>th</sup> Rwanda Population and Housing Census (PHC4) has enumerated 2,589,975, residents in the Southern Province representing 24.6% of the total population of Rwanda (10,515,973 residents).
- The population of the Southern Province is predominantly females (1,356,221) corresponding to 52.4% of the total population of the province.
- Nyamagabe and Kamonyi are the most populated districts with more than 340 thousand residents each. Their populations represent 13.2% and 13.1% respectively of the total resident population of the southern Province.
- The least populated district is Nyaruguru with about 294 thousand residents corresponding to 11.4% of the total resident population of the Southern Province.
- Three districts with high population density (Inhabitants /km<sup>2</sup>) are Huye, (565 inhabitants /km<sup>2</sup>), Kamonyi (519 inhabitants per Sq.km) and Ruhango (510 inhabitants /km<sup>2</sup>).
- Two districts with low population density (Inhabitants /km<sup>2</sup>) are Nyaruguru (291 inhabitants /km<sup>2</sup>), Nyamagabe (313 inhabitants /km<sup>2</sup>)



Figure 2: Population Density (Inhabitants /km<sup>2</sup>) by district in Southern Province

### 1.1.2. Size and Spatial Distribution of the Population of Kamonyi district

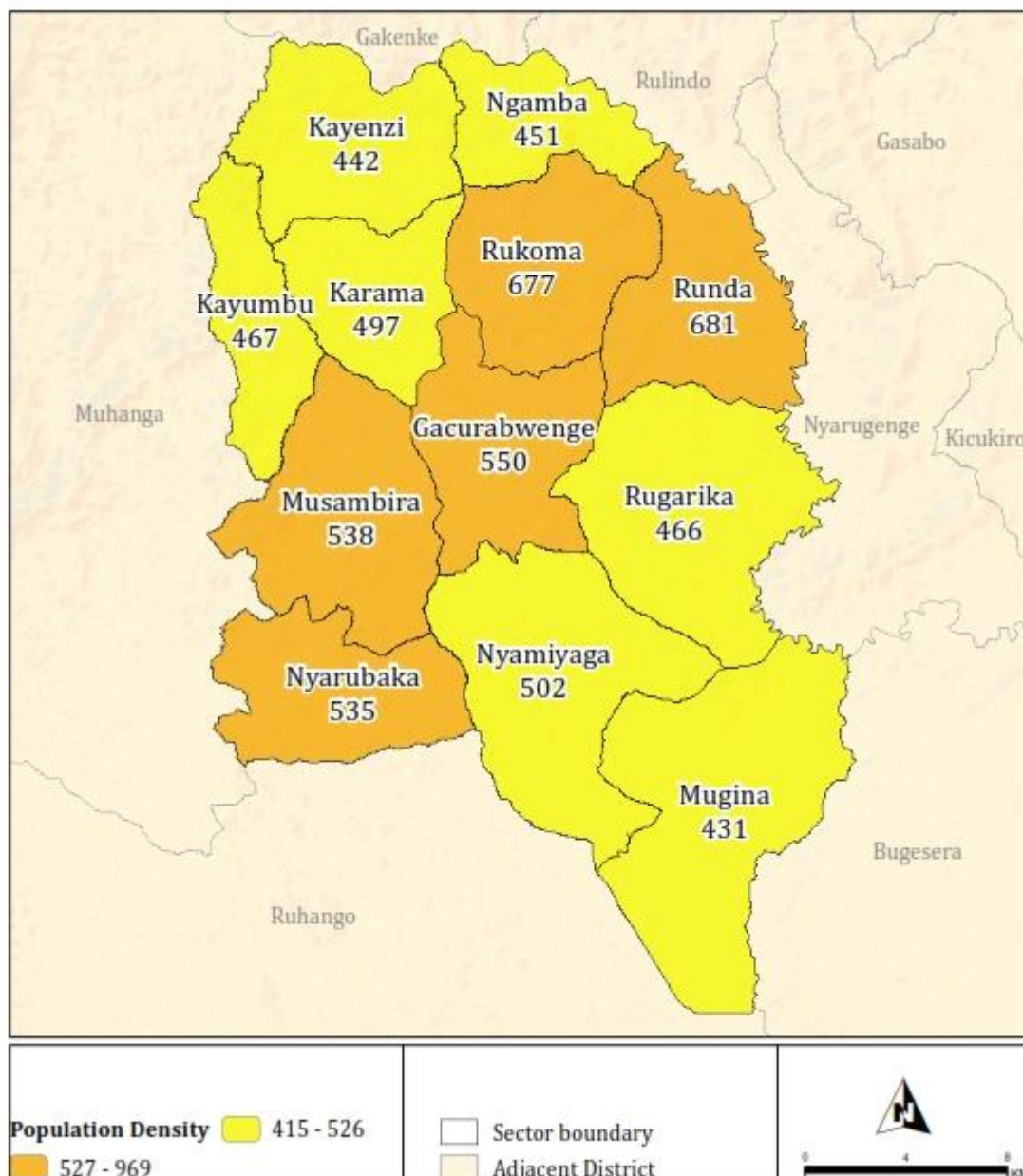
Table 2: Distribution (count) of the resident population in Kamonyi district in 2012 by Sector, Sex and density

Sectors	Both sexes	Male	Female	% of female	Population share (% of the total population)	Density (Inhabitants / km <sup>2</sup> )
<b>Rwanda</b>	<b>10,515,973</b>	<b>5,064,868</b>	<b>5,451,105</b>	<b>51.8</b>		<b>415</b>
<b>Southern Province</b>	<b>2,589,975</b>	<b>1,233,754</b>	<b>1,356,221</b>	<b>52.4</b>		<b>434</b>
<b>Kamonyi district</b>	<b>340,501</b>	<b>162,189</b>	<b>178,312</b>	<b>52.4</b>	<b>100</b>	<b>519</b>
Gacurabwenge	27,850	13,112	14,738	52.9	8.2	550
Karama	18,717	8,758	9,959	53.2	5.5	497
Kayenzi	22,787	10,920	11,867	52.1	6.7	442
Kayumbu	15,530	7,351	8,179	52.7	4.6	467
Mugina	38,709	18,446	20,263	52.3	11.4	431
Musambira	34,025	16,073	17,952	52.8	10.0	538
Ngamba	14,175	6,778	7,397	52.2	4.2	451
Nyamiyaga	38,945	18,489	20,456	52.5	11.4	502
Nyarubaka	25,155	11,774	13,381	53.2	7.4	535
Rugarika	34,860	16,676	18,184	52.2	10.2	466
Rukoma	34,909	16,529	18,380	52.7	10.3	677
Runda	34,839	17,283	17,556	50.4	10.2	681

Source: Rwanda 4th Population and Housing Census, 2012 (NISR)

- The 4<sup>th</sup> Rwanda Population and Housing Census (PHC4) has enumerated 340,501 residents in Kamonyi district, which represents 13.1% of the total population of the Southern Province (2,589,975 residents).
- The population of Kamonyi district is predominantly female; 178,312 are women corresponding to 52.4% of the total population.
- In each sector of Kamonyi district, the percentage of females is more than 50% of the total population.
- Nyamiyaga and Mugina are the most populated sectors with over 38 thousand residents each. They represent 11% of the total population of Kamonyi district each.
- Kayumbu and Ngamba are the least populated sectors in Kamonyi district with 15,530 and 14,175 residents respectively.

Figure 3: Population Density of Kamonyi District by Sector in 2012



Source: Rwanda 4<sup>th</sup> Population and Housing Census, 2012 (NISR)

### 1.1.3. Size and Spatial Distribution of the Population of Kamonyi district by residence area

Table 3: Distribution (count and %) of the resident population of Kamonyi district by Sector and Area of Residence.

District / Sectors	Count			%		
	Total	Urban	Rural	Total	Urban	Rural
<b>Rwanda</b>	<b>10,515,973</b>	<b>1,737,684</b>	<b>8,778,289</b>	<b>100</b>	<b>16.5</b>	<b>83.5</b>
<b>Southern Province</b>	<b>2,589,975</b>	<b>229,766</b>	<b>2,360,209</b>	<b>100</b>	<b>8.9</b>	<b>91.1</b>
<b>Kamonyi district</b>	<b>340501</b>	<b>39035</b>	<b>301466</b>	<b>100</b>	<b>11.5</b>	<b>88.5</b>
Gacurabwenge	27850	0	27850	100	0.0	100.0
Karama	18717	0	18717	100	0.0	100.0
Kayenzi	22787	0	22787	100	0.0	100.0
Kayumbu	15530	0	15530	100	0.0	100.0
Mugina	38709	14755	23954	100	38.1	61.9
Musambira	34025	7824	26201	100	23.0	77.0
Ngamba	14175	0	14175	100	0.0	100.0
Nyamiyaga	38945	0	38945	100	0.0	100.0
Nyarubaka	25155	0	25155	100	0.0	100.0
Rugarika	34860	0	34860	100	0.0	100.0
Rukoma	34909	3461	31448	100	9.9	90.1
Runda	34839	12995	21844	100	37.3	62.7

Source: Rwanda 4th Population and Housing Census, 2012 (NISR)

- Kamonyi district, population is predominantly rural with 88.5% of its population (301466 inhabitants) living in rural areas.
- 11.5% of the population of Kamonyi district resides in urban areas. Eight of twelve sectors in Kamonyi district are entirely rural.

### 1.1.4. Size and Spatial Distribution of the Population of Kamonyi district

Table 4: Distribution (count and %) of the resident population of Kamonyi district by 5-year age group and sex

5-year age group	Count			%		
	Both sexes	Male	Female	Both sexes	Male	Female
<b>Total</b>	<b>340,501</b>	<b>162,189</b>	<b>178,312</b>	<b>100.0</b>	<b>100.0</b>	<b>100.0</b>
0-4	48001	24044	23957	14.1	14.8	13.4
5-9	48155	23961	24194	14.1	14.8	13.6
10-14	39765	19832	19933	11.7	12.2	11.2
15-19	35256	17706	17550	10.4	10.9	9.8
20-24	28226	13460	14766	8.3	8.3	8.3
25-29	27995	13484	14511	8.2	8.3	8.1
30-34	26204	12575	13629	7.7	7.8	7.6
35-39	17942	8047	9895	5.3	5.0	5.5
40-44	15744	6908	8836	4.6	4.3	5.0
45-49	13423	5830	7593	3.9	3.6	4.3
50-54	12530	5530	7000	3.7	3.4	3.9
55-59	8762	3761	5001	2.6	2.3	2.8
60-64	5982	2423	3559	1.8	1.5	2.0
65-69	3697	1331	2366	1.1	0.8	1.3
70-74	3564	1219	2345	1.0	0.8	1.3
75-79	2327	898	1429	0.7	0.6	0.8
80-84	1692	706	986	0.5	0.4	0.6
85+	1236	474	762	0.4	0.3	0.4

Source: Rwanda 4th Population and Housing Census, 2012, ( NISR)

- The population of Kamonyi district is mostly young, 58.6% is under 25 years old, as shown by the age pyramid (Figure 4), reflecting the high level of fertility in the recent past.
- The elderly (60 years and above) represent 5.5% of the total population of the district. The distribution of the resident population by age and by sector is in the annex.

Figure 4: Age pyramid of the resident population of Kamonyi district in 2012

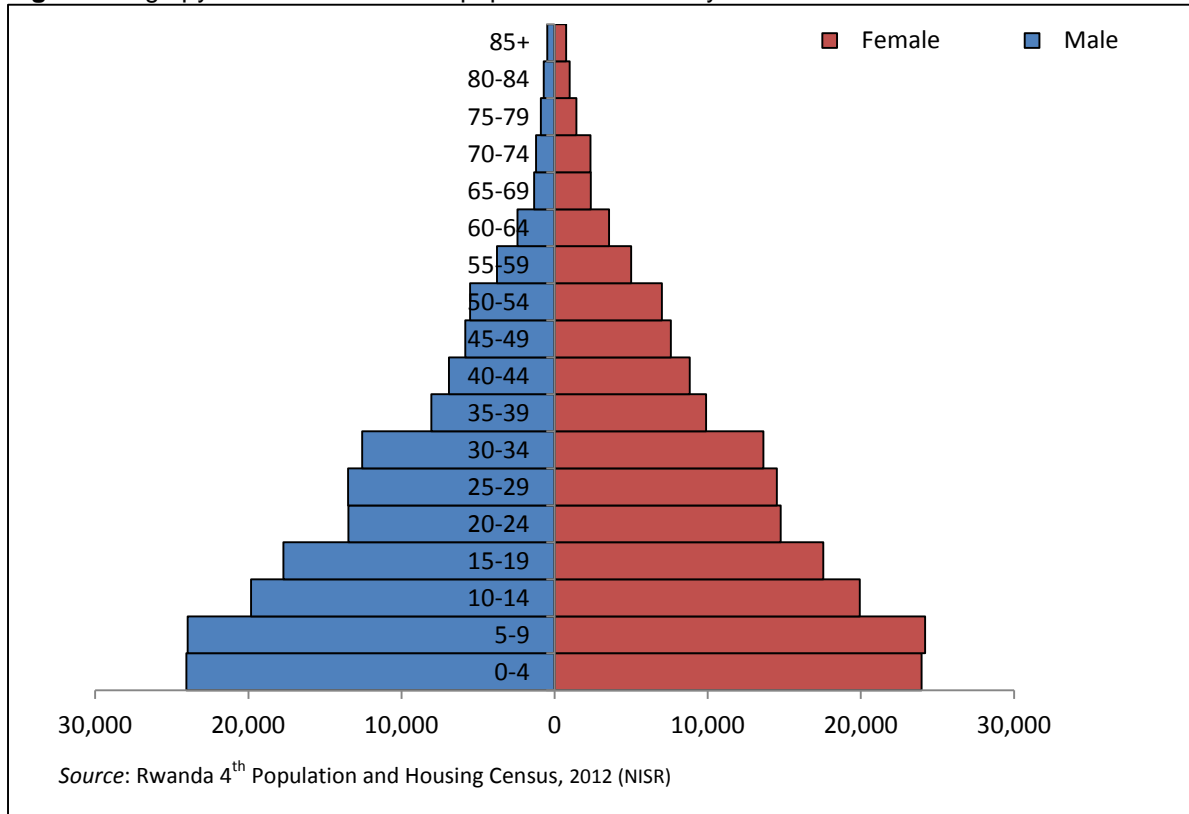


Table 5: Number and population share (%) of some specific interventions targeted groups in Kamonyi district by sex

Age group (years)	Population			Population share (%)		
	Both Sexes	Male	Female	Both Sexes	Male	Female
<1	18298	9255	9043	5.4	2.7	2.7
<5	57721	28845	28876	17.0	8.5	8.5
1-4	38864	19411	19453	11.4	5.7	5.7
3-6	41209	20383	20826	12.1	6.0	6.1
0-15	143412	71606	71806	42.1	21.0	21.1
0-17	158684	79322	79362	46.6	23.3	23.3
7-12	54296	27127	27169	15.9	8.0	8.0
13-18	43076	21598	21478	12.7	6.3	6.3
14+	211184	97593	113591	62.0	28.7	33.4
14-35	128466	62366	66100	37.7	18.3	19.4
15-24	63482	31166	32316	18.6	9.2	9.5
15-49(female)			86780			25.5
16-64	184573	85955	98618	54.2	25.2	29.0
16+	197089	90583	106506	57.9	26.6	31.3
18+	181817	82867	98950	53.4	24.3	29.1
21+	163201	73734	89467	47.9	21.7	26.3
60+	18498	7051	11447	5.4	2.1	3.4
65+	12516	4628	7888	3.7	1.4	2.3
<b>Total resident population</b>	<b>340501</b>	<b>162189</b>	<b>178312</b>	<b>100</b>	<b>47.6</b>	<b>52.4</b>

- Some age groups are targets of specific interventions. For instance children under five years for immunization programs, children in primary school age (7-12 years), people in the official working age group (16-64 years), etc.
- Knowing the size of such groups is of great importance for the design, implementation, monitoring and evaluation of programs targeting such groups. The above table gives the size of the main interventions target groups by sex, and their share in the entire population of Kamonyi district.
- The population aged 0-17 represents 46.6 % of the total population of the district. The economically active population aged 16 and 64 years represents 54.2%.

## Chapter 2: Characteristics of the population

### 2.1. Socio-cultural characteristics of the population

Table 6: Distribution (count and %) of the resident population of Kamonyi district by Nationality and Sector

Sectors	Count				%			
	Total	Rwanda	Foreigners	N.S.	Total	Rwanda	Foreigners	N.S.
<b>Rwanda</b>	<b>10,515,973</b>	<b>10,416,164</b>	<b>87,346</b>	<b>12,463</b>	<b>100</b>	<b>99.1</b>	<b>0.8</b>	<b>0.1</b>
<b>Southern Province</b>	<b>2,589,975</b>	<b>2,567,468</b>	<b>21,214</b>	<b>1,293</b>	<b>100</b>	<b>99.1</b>	<b>0.8</b>	<b>0.0</b>
<b>Kamonyi district</b>	<b>340501</b>	<b>340138</b>	<b>150</b>	<b>213</b>	<b>100</b>	<b>99.9</b>	<b>0.0</b>	<b>0.1</b>
Gacurabwenge	27850	27822	17	11	100	99.9	0.1	0.0
Karama	18717	18706	5	6	100	99.9	0.0	0.0
Kayenzi	22787	22781	0	6	100	100	0.0	0.0
Kayumbu	15530	15508	5	17	100	99.9	0.0	0.1
Mugina	38709	38678	21	10	100	99.9	0.1	0.0
Musambira	34025	33966	16	43	100	99.8	0.0	0.1
Ngamba	14175	14160	2	13	100	99.9	0.0	0.1
Nyamiyaga	38945	38907	10	28	100	99.9	0.0	0.1
Nyarubaka	25155	25123	3	29	100	99.9	0.0	0.1
Rugarika	34860	34827	17	16	100	99.9	0.0	0.0
Rukoma	34909	34880	11	18	100	99.9	0.0	0.1
Runda	34839	34780	43	16	100	99.8	0.1	0.0

Source: Rwandan 4th Population and Housing Census, 2012 (NISR)

- Kamonyi district hosts very few foreigners; only 150 out of 340,501 residents are foreigners.



Table 7: Distribution (count and %) of the resident population of Kamonyi district by Religious Affiliation and residence areas

District / Sectors	Count			%		
	Total	Urban	Rural	Total	Urban	Rural
<b>Rwanda</b>	<b>10,515,973</b>	<b>1,737,687</b>	<b>8,778,289</b>			
<b>Southern Province</b>	<b>2,589,975</b>	<b>229,766</b>	<b>2,360,209</b>			
<b>Kamonyi district</b>	340501	39035	301466	100	100	100
Catholic	165905	16555	149350	48.7	42.4	49.5
Protestant	133695	16333	117362	39.3	41.8	38.9
Adventist	23237	3588	19649	6.8	9.2	6.5
Muslim	7360	1171	6189	2.2	3.0	2.1
Jehovah Witness	1480	279	1201	0.4	0.7	0.4
Traditional/Animist	23	3	20	0.0	0.0	0.0
Non Religion	6931	837	6094	2.0	2.1	2.0
Other	1326	157	1169	0.4	0.4	0.4
Not stated	544	112	432	0.2	0.3	0.1

Source: Rwandan 4th Population and Housing Census, 2012 (NISR)

- Christianity is the predominant religion in Kamonyi district with 95.2%. Catholics are 48.7%, Protestants are 39.3%, Adventists are 6.8% and Jehovah Witnesses are 0.4%
- Muslims represent 2.2% of the resident population

## 2.2. Marital Status

Table 8: Distribution (%) of the resident population of Kamonyi district aged 12 years and above by Marital status and Sector

District / Sectors	Total (count)	Total (%)	Never married	Currently Married	Separated	Widowed	Divorced	Not Stated
Rwanda	6,937,678	100	45.5	46.1	0.5	6.3	1.5	0.0
Southern Province	1,715,418	100.0	44.8	45.6	0.6	7.3	1.6	0.1
Kamonyi district	227509	100.0	45.3	45.8	0.7	6.8	1.3	0.1
Gacurabwenge	18893	100.0	50.1	40.6	0.8	7.6	0.9	0.1
Karama	12447	100.0	43.7	47.7	0.6	7.3	0.7	0.0
Kayenzi	15858	100.0	45.4	48.2	0.5	5.4	0.5	0.0
Kayumbu	10586	100.0	41.8	50.3	0.3	6.5	1.0	0.1
Mugina	24889	100.0	41.7	48.8	0.8	6.9	1.6	0.0
Musambira	22849	100.0	46.6	44.1	0.9	7.2	1.0	0.1
Ngamba	9806	100.0	46.0	46.3	0.5	6.2	1.0	0.1
Nyamiyaga	24782	100.0	41.6	48.8	0.8	6.7	2.0	0.1
Nyarubaka	16689	100.0	43.1	45.8	0.5	8.1	2.5	0.0
Rugarika	22909	100.0	44.9	46.3	0.7	6.8	1.2	0.1
Rukoma	24007	100.0	48.8	42.7	0.5	6.8	1.1	0.1
Runda	23794	100.0	48.3	43.6	0.6	6.0	1.4	0.1

Source: Rwanda 4th Population and Housing Census, 2012 (NISR)

- 45.8% of the resident population of Kamonyi district aged 12 and above were married at the time of the census, while 45.3% were never married. 6.8% were widowed, while separated and divorced were relatively few (0.7% and 1.3% respectively).
- At sector level,
  - Three sectors have the highest percentages of currently married people: Kayumbu (50.3%), Nyamiyaga and Mugina sectors (48.8% each).
  - Gacurabwenge sector has the high percentage of never married persons (50.1%),

Table 9: Distribution (%) of the resident population of Kamonyi district aged 12 years and above by marital status, Age groups and Sex [Both sexes]

District / Sectors	Total (count)	Total (%)	Never married	Currently Married	Separated	Widowed	Divorced	Not Stated
Rwanda	6,937,678	100	45.5	46.1	0.5	6.3	1.5	0.0
South	1,715,418	100	44.8	45.6	0.6	7.3	1.6	0.1
<b>Kamonyi district</b>	<b>227509</b>	<b>100</b>	<b>45.3</b>	<b>45.8</b>	<b>0.7</b>	<b>6.8</b>	<b>1.3</b>	<b>0.1</b>
12-14	22929	100	99.7	0.3	0.0	0.0	0.0	0.0
15-19	35256	100	98.6	1.3	0.0	0.1	0.0	0.0
20-24	28226	100	79.5	19.7	0.3	0.1	0.4	0.0
25-29	27995	100	43.0	55.0	0.7	0.3	0.9	0.0
30-34	26204	100	20.7	75.8	1.0	0.9	1.5	0.0
35-39	17942	100	11.9	81.7	1.2	2.6	2.5	0.1
40-44	15744	100	9.2	79.8	1.2	7.2	2.7	0.1
45-49	13423	100	6.4	76.1	1.3	13.4	2.8	0.1
50-54	12530	100	4.3	73.0	1.2	18.6	2.8	0.1
55-59	8762	100	2.8	69.9	1.1	23.5	2.7	0.1
60-64	5982	100	2.0	64.8	0.8	29.6	2.5	0.2
65-69	3697	100	1.5	56.7	0.9	38.3	2.2	0.3
70-74	3564	100	1.1	53.4	0.6	42.4	1.9	0.6
75-79	2327	100	1.7	50.5	0.4	45.5	1.8	0.3
80-84	1692	100	2.2	44.5	0.5	51.7	0.7	0.4
85+	1236	100	2.9	34.1	0.4	61.4	0.6	0.6

Source: Rwanda 4<sup>th</sup> Population and Housing Census, 2012 (NISR)

The percentages of the resident population of Kamonyi district by marital status vary by sex and age:

- The percentage of never married persons decreases from 99.7% (age group of 12-14 years) to 2.9% (age group of 85 years and above).
- The percentage of persons currently married starts by increasing from 0.3% (age group of 12-14 years) to a maximum of 81% (age group of 35-39 years) before decreasing to 34% mainly due to widowhood.
- The percentage of divorced persons never reaches 3%, while the percentage of the separated persons is below 1.5% among all age groups.
- For more details on marital status and sex distribution, see annex.

### 2.3 Educational Characteristics of the Population

Table 10: Distribution (count and %) of the school-age population of Kamonyi district by Sector, School attendance status and by Sex (Both sexes)

Pre-school age(3-6 years)					
Sectors	Total (count)	Total (%)	Currently attending	No longer attending	Never attended
<b>Rwanda</b>	<b>1,280,857</b>	<b>100</b>	<b>29.8</b>	<b>0.5</b>	<b>69.6</b>
<b>Southern Province</b>	<b>319,120</b>	<b>100</b>	<b>25.5</b>	<b>0.5</b>	<b>74.0</b>
<b>Kamonyi district</b>	<b>41209</b>	<b>100</b>	<b>35.5</b>	<b>0.7</b>	<b>63.8</b>
Gacurabwenge	3274	100	32.5	0.7	66.8
Karama	2338	100	50.4	0.6	49.0
Kayenzi	2477	100	40.5	0.5	59.0
Kayumbu	1780	100	33.5	0.7	65.8
Mugina	5154	100	18.1	1.2	80.7
Musambira	4064	100	39.7	0.5	59.8
Ngamba	1561	100	36.9	0.3	62.8
Nyamiyaga	5255	100	35.4	1.0	63.6
Nyarubaka	3060	100	46.2	0.7	53.1
Rugarika	4495	100	27.9	0.4	71.7
Rukoma	3739	100	35.4	0.3	64.3
Runda	4012	100	45.3	0.5	54.2
Primary school age(7-12 years)					
Sectors	Total (count)	Total (%)	Currently attending	No longer attending	Never attended
<b>Rwanda</b>	<b>1,712,459</b>	<b>100.0</b>	<b>92.5</b>	<b>0.9</b>	<b>6.6</b>
<b>Southern Province</b>	<b>421,040</b>	<b>100.0</b>	<b>92.1</b>	<b>1.1</b>	<b>6.8</b>
<b>Kamonyi district</b>	<b>54296</b>	<b>100</b>	<b>95.1</b>	<b>1.1</b>	<b>3.8</b>
Gacurabwenge	4357	100	94.3	2.0	3.8
Karama	2952	100	97.9	0.3	1.8
Kayenzi	3521	100	97.2	0.5	2.3
Kayumbu	2482	100	95.6	2.3	2.2
Mugina	6599	100	90.0	2.7	7.3
Musambira	5481	100	96.0	1.1	2.9
Ngamba	2186	100	97.6	0.3	2.2
Nyamiyaga	6463	100	94.8	0.9	4.4
Nyarubaka	4259	100	95.2	0.9	4.0
Rugarika	5289	100	94.3	1.0	4.7
Rukoma	5627	100	96.8	0.6	2.6
Runda	5080	100	96.5	0.5	3.1

Secondary school age (13-18 years)					
Sectors	Total (count)	Total (%)	Currently attending	No longer attending	Never attended
<b>Rwanda</b>	<b>1,365,771</b>	<b>100.0</b>	<b>74.4</b>	<b>21.1</b>	<b>4.5</b>
<b>Southern Province</b>	<b>332,451</b>	<b>100.0</b>	<b>76.9</b>	<b>19.3</b>	<b>3.8</b>
<b>Kamonyi district</b>	<b>43076</b>	<b>100</b>	<b>78.7</b>	<b>18.4</b>	<b>2.9</b>
Gacurabwenge	3690	100	81.9	15.7	2.4
Karama	2250	100	82.0	16.4	1.6
Kayenzi	2895	100	82.1	16.0	1.9
Kayumbu	1981	100	75.3	22.0	2.7
Mugina	4708	100	73.0	23.0	4.0
Musambira	4367	100	84.9	12.1	3.0
Ngamba	1850	100	78.8	19.6	1.6
Nyamiyaga	4523	100	77.2	18.9	3.9
Nyarubaka	3133	100	74.5	22.0	3.5
Rugarika	4339	100	76.0	21.0	3.1
Rukoma	4854	100	80.3	17.4	2.3
Runda	4486	100	79.2	18.0	2.7

Source: Rwanda 4<sup>th</sup> Population and Housing Census, 2012 (NISR)

School attendance among children varies across education levels:

- It is very low (35.5%) for the pre-school-age population (3-6 years), very high (95.1%) for the primary school-age population (7-12 years), and high (78.7%) for the secondary school-age population (13-18 years) at the time of census.
- School attendance varies also across the sectors:
  - for the pre-school-age, it varies from 18.1% in Gacurabwenge to 50.4% in Karama;
  - for the primary school-age, it varies from 90 % in Mugina to 97.9% in Karama, and
  - For the secondary school, it varies from 73% in Mugina to 84.9% in Musambira.

Table 11: Gross and Net Attendance Rate (%) in Primary School of Kamonyi district by Sex and Sector

District / Sectors	Gross attendance rates				Net attendance rates			
	Both sexes	Male	Female	GPI	Both sexes	Male	Female	GPI
Rwanda	138.7	138.9	138.4	1.0	88.2	87.3	89.1	1.0
Southern Province	139.8	140.2	139.5	1.0	87.7	86.6	88.8	1.0
<b>Kamonyi district</b>	<b>142.7</b>	<b>143.5</b>	<b>141.9</b>	<b>1.0</b>	<b>90.9</b>	<b>90.2</b>	<b>91.6</b>	<b>1.02</b>
Gacurabwenge	145.5	145.9	145.2	1.0	90.5	90.2	90.8	1.01
Karama	145.1	147.0	143.2	1.0	94.8	94.4	95.3	1.01
Kayenzi	142.6	144.5	140.7	1.0	90.2	90.1	90.3	1.00
Kayumbu	138.3	140.8	135.8	1.0	91.3	91.4	91.3	1.00
Mugina	132.8	132.9	132.7	1.0	87.9	86.7	89.0	1.03
Musambira	145.9	149.0	142.8	1.0	88.5	87.9	89.2	1.01
Ngamba	145.2	143.7	146.7	1.0	95.1	94.7	95.6	1.01
Nyamiyaga	138.1	138.9	137.2	1.0	89.4	88.5	90.3	1.02
Nyarubaka	140.2	140.0	140.4	1.0	91.2	90.5	91.9	1.02
Rugarika	144.4	144.9	143.9	1.0	90.5	89.5	91.5	1.02
Rukoma	146.1	145.1	147.1	1.0	93.5	92.4	94.5	1.02
Runda	152.3	153.6	151.0	1.0	93.5	92.7	94.3	1.02

Source: Rwanda 4<sup>th</sup> Population and Housing Census, 2012 (NISR)

Table 11 reveals that not all children attending primary school level are of the official age for that level (7-12 years).

- The gross attendance rates are greater than 100% in all sectors, with minor variations.
- The net attendance rate (NAR) in Primary school for Kamonyi district is 90.9% above NAR at Province and National level (87.7% and 88.2%, respectively).
- The highest net attendance rate in primary school (95.1%) is in Ngamba sector and low (87.9%) in Mugina sector.

Table 12: Gross and Net Attendance Rate (%) in Secondary School of Kamonyi district by Sex and Sector

District / Sectors	Gross attendance rates				Net attendance rates			
	Both sexes	Male	Female	GPI	Both sexes	Male	Female	GPI
Rwanda	42.3	41.7	43.0	1.0	22.0	20.1	23.8	1.2
Southern Province	40.3	37.4	43.1	1.2	20.3	17.5	23.1	1.3
Kamonyi district	45.6	39.2	52.0	1.3	23.8	18.9	28.7	1.5
Gacurabwenge	56.4	48.0	64.8	1.4	28.6	22.6	34.6	1.5
Karama	55.9	45.9	65.4	1.4	30.7	21.9	39.1	1.8
Kayenzi	51.5	41.8	61.6	1.5	28.6	22.3	35.2	1.6
Kayumbu	44.0	36.9	51.2	1.4	24.3	17.8	30.8	1.7
Mugina	34.5	32.0	37.0	1.2	17.9	14.8	20.9	1.4
Musambira	47.1	41.4	53.0	1.3	22.9	19.1	26.9	1.4
Ngamba	54.4	42.7	66.3	1.6	30.5	23.8	37.4	1.6
Nyamiyaga	35.5	30.7	40.5	1.3	18.6	15.4	21.7	1.4
Nyarubaka	34.3	31.6	36.9	1.2	17.3	14.7	20.0	1.4
Rugarika	41.1	35.9	46.3	1.3	19.3	15.3	23.4	1.5
Rukoma	52.2	41.3	63.0	1.5	29.7	21.8	37.4	1.7
Runda	50.5	47.2	53.9	1.1	24.9	21.4	28.5	1.3

Source: Rwanda 4<sup>th</sup> Population and Housing Census, 2012 (NISR)

- The net and gross attendance rates in Kamonyi district are below 50%. This means that more than half of children who are supposed to attend secondary school are actually not attending.
- There are differences in both attendance rates (GAR and NAR) among males and females: the GAR is 39% for male vs 52% for female while the NAR is 18.9% for male vs 28.7% for female
- There are variations by sector; the net attendance rate in Karama sector is 30.5% while it is 17.3% in Nyarubaka sector.

Table 13: Distribution (count and %) of the resident population of Kamonyi district aged 3 years and above by Highest level of educational attainment and Sector (Both sexes)

District / Sectors	Total (count)	Total (%)	No schooling	Preschool	Primary	Post-primary	Secondary	University	Not stated
<b>Rwanda</b>	<b>9,618,310</b>	<b>100</b>	<b>25.5</b>	<b>3.5</b>	<b>56.7</b>	<b>0.8</b>	<b>10.8</b>	<b>1.9</b>	<b>1.0</b>
<b>Southern Province</b>	<b>2,247,963</b>	<b>100</b>	<b>28.7</b>	<b>2.6</b>	<b>56.3</b>	<b>0.5</b>	<b>9.6</b>	<b>1.2</b>	<b>0.9</b>
<b>Kamonyi district</b>	<b>313489</b>	<b>100</b>	<b>21.7</b>	<b>4.3</b>	<b>61.2</b>	<b>1.2</b>	<b>9.8</b>	<b>0.9</b>	<b>1.0</b>
Gacurabwenge	25695	100	19.9	3.4	59.7	1.6	13.1	1.2	1.2
Karama	17239	100	18.1	5.7	63.7	1.2	10.1	0.6	0.6
Kayenzi	21225	100	17.7	5.3	64.0	1.1	10.1	0.9	0.9
Kayumbu	14405	100	23.0	3.8	61.4	1.0	8.6	0.5	1.7
Mugina	35545	100	26.0	2.2	61.9	0.9	7.7	0.5	0.8
Musambira	31426	100	22.4	5.6	59.1	0.9	10.0	0.8	1.1
Ngamba	13166	100	19.9	3.5	63.4	1.1	10.5	0.6	1.1
Nyamiyaga	35428	100	25.2	5.2	60.5	0.8	6.9	0.3	1.1
Nyarubaka	23229	100	22.4	5.8	63.3	0.8	6.4	0.4	0.9
Rugarika	31790	100	22.9	3.6	61.3	1.5	9.1	0.7	0.9
Rukoma	32329	100	19.7	3.0	61.6	1.7	11.6	1.1	1.3
Runda	32012	100	18.6	4.9	58.4	1.5	13.4	2.2	1.0

Source: Rwanda 4<sup>th</sup> Population and Housing Census, 2012 (NISR)

- Among the population aged 3 years and above in Kamonyi district, 21.7% of them have no education, 61.2% attained primary level and 9.8% attained secondary level, while 0.9% attained university.
- Level of educational attainment varies across sectors and Runda sector has both the highest proportion of residents which attained the secondary and university levels, i.e. 13.4% and 2.2% respectively.



## 2.4 Economic Activity Characteristics of the Population

Table 14: Labour-force participation rate (%) among the resident population aged 16 years and above by sex, Southern Province, district and area of residence

Provinces and Districts	Total			Urban			Rural		
	Both sexes	Male	Female	Both sexes	Male	Female	Both sexes	Male	Female
<b>Rwanda</b>	<b>73.6</b>	<b>75.6</b>	<b>71.7</b>	<b>68.1</b>	<b>75.2</b>	<b>60.9</b>	<b>74.7</b>	<b>75.8</b>	<b>73.9</b>
<b>Southern Province</b>	<b>71.6</b>	<b>73.3</b>	<b>70.1</b>	<b>69.8</b>	<b>74.7</b>	<b>65.1</b>	<b>71.7</b>	<b>73.2</b>	<b>70.6</b>
Nyanza	72.3	74.0	70.8	70.0	74.1	66.2	72.5	74.0	71.2
Gisagara	74.0	74.9	73.2	71.4	69.2	73.2	74.0	75.0	73.2
Nyaruguru	65.8	66.5	65.3	65.3	67.6	63.2	65.8	66.5	65.3
Huye	68.2	70.8	66.0	66.5	73.4	59.8	68.5	70.3	67.0
Nyamagabe	61.2	63.9	59.1	64.7	69.8	60.1	61.0	63.4	59.0
Ruhango	74.6	76.2	73.3	71.2	75.0	67.5	75.0	76.3	73.8
Muhanga	79.4	80.8	78.2	71.7	77.1	66.6	80.8	81.5	80.2
<b>Kamonyi district</b>	<b>75.9</b>	<b>77.9</b>	<b>74.2</b>	<b>73.5</b>	<b>77.9</b>	<b>69.5</b>	<b>76.2</b>	<b>77.9</b>	<b>74.8</b>

Source: Rwanda 4<sup>th</sup> Population and Housing Census, 2012 (NISR)

- The official working age in Rwanda is 16 years and above.
- The labour force participation varies greatly by district in Southern Province: from 61.2% in Nyamagabe and 79.4% in Muhanga district.
- 75.9% of resident aged 16 years and above are in the labour market, either working or looking for a job (economically active).
- Labour force participation rate is slightly higher among males than females in both urban (77.9% vs 69.5%) and rural areas (77.9% vs 74.8%).

Figure 5: Labour-force participation rate (LFPR) among resident population aged 16 years and above in Kamonyi district by age-group and sex

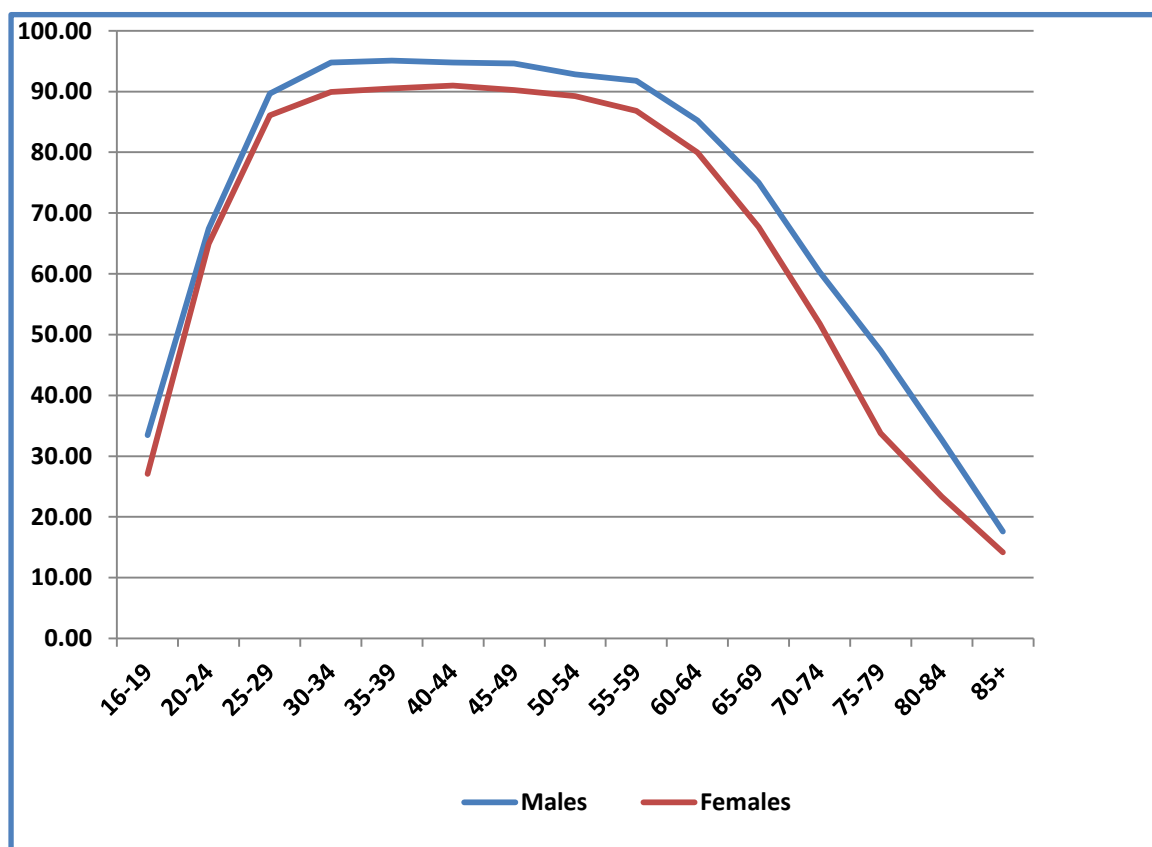


Figure 5 allows the study of the calendar and intensity of labour force participation and its variation by sex. The figure reveals:

- Early entry and late exit to labour market in Kamonyi district were around 30% at age 16 (the official entry age in the labour market) and above 65% at 65 years (official age of retirement).
- Labour force participation is intense between ages 25 and 60 with around 80% of the population in the labour market.
- Some gender disparities are remarkable in labour force participation, at all age groups; males contribute more than females to labour force.

Table 15: Unemployment rate (%) among the active population aged 16 years and above in Southern Province by sex, district and area of residence

Provinces and Districts	Total			Urban			Rural		
	Both sexes	Male	Female	Both sexes	Male	Female	Both sexes	Male	Female
Rwanda	3.4	2.8	4.0	7.7	5.1	11.1	2.6	2.2	2.9
Southern Province	3.3	2.7	3.7	5.0	3.5	6.6	3.1	2.7	3.5
Nyanza	3.1	2.5	3.6	4.5	3.4	5.6	3.0	2.4	3.5
Gisagara	3.0	2.7	3.3	1.2	1.5	1.0	3.1	2.7	3.4
Nyaruguru	3.1	2.7	3.4	2.4	2.1	2.8	3.1	2.7	3.4
Huye	4.0	3.4	4.5	6.3	4.6	8.4	3.6	3.1	4.0
Nyamagabe	5.3	4.7	5.8	4.4	3.5	5.4	5.4	4.8	5.8
Ruhango	3.6	3.0	4.1	4.7	3.4	6.0	3.5	3.0	4.0
Muhanga	2.1	1.6	2.5	6.5	4.0	9.1	1.4	1.2	1.5
<b>Kamonyi district</b>	<b>2.5</b>	<b>1.9</b>	<b>3.1</b>	<b>3.3</b>	<b>2.2</b>	<b>4.6</b>	<b>2.4</b>	<b>1.8</b>	<b>3.0</b>

Source: Rwanda 4<sup>th</sup> Population and Housing Census, 2012 (NISR)

- In Southern Province, variations of unemployment rate are important by district: from 2.1% in Muhanga to 5.3% in Nyamagabe district
- 2.5% of the total active population aged 16 years and above in Kamonyi district was unemployed the week preceding the census.
- In Kamonyi district, unemployment rate (UR) is higher in urban (3.3%) than in rural areas (2.4%).
- Unemployment rate among females is higher than males' (3.1% vs 1.9%).

## Chapter 3: Sub-Population

### 3.1. Children (0-17 years)

#### 3.1.1. Children population

Table 16: Number and share (%) of children aged 0-17 years among the total resident population of Kamonyi district by sex and sector of residence

Sectors	Total resident population			Total resident children			Share (%)		
	Both sexes	Male	Female	Both sexes	Male	Female	Both sexes	Male	Female
Rwanda	10,515,973	5,064,868	5,451,105	5,015,128	2,486,716	2,528,412	47.7	49.1	46.4
Southern Province	2589975	1233754	1356221	1228875	611937	616938	47.4	49.6	45.5
Kamonyi district	<b>340,501</b>	<b>162,189</b>	<b>178,312</b>	<b>158684</b>	<b>79322</b>	<b>79362</b>	<b>46.6</b>	<b>48.9</b>	<b>44.5</b>
Gacurabwenge	27,850	13,112	14,738	12825	6405	6420	46.1	48.8	43.6
Karama	18,717	8,758	9,959	8685	4276	4409	46.4	48.8	44.3
Kayenzi	22,787	10,920	11,867	10087	5076	5011	44.3	46.5	42.2
Kayumbu	15,530	7,351	8,179	7112	3565	3547	45.8	48.5	43.4
Mugina	38,709	18,446	20,263	18872	9374	9498	48.8	50.8	46.9
Musambira	34,025	16,073	17,952	15832	7982	7850	46.5	49.7	43.7
Ngamba	14,175	6,778	7,397	6323	3185	3138	44.6	47.0	42.4
Nyamiyaga	38,945	18,489	20,456	19032	9636	9396	48.9	52.1	45.9
Nyarubaka	25,155	11,774	13,381	11917	5878	6039	47.4	49.9	45.1
Rugarika	34,860	16,676	18,184	16372	8209	8163	47.0	49.2	44.9
Rukoma	34,909	16,529	18,380	16006	7900	8106	45.9	47.8	44.1
Runda	34,839	17,283	17,556	15621	7836	7785	44.8	45.3	44.3

Source: Rwanda 4<sup>th</sup> Population and Housing Census, 2012 (NISR)

- Children constituted (46.6%) of the resident population of Kamonyi district, with a percentage of male children higher than female's. (48.9% against 44.5%)
- The children share is high in Nyamiyaga (48.9%) and Mugina (48.8%) and small in Kayenzi (44.3%).

### 3.1.2 Children birth registration

Table 17: Percentage of the children aged 0-17 in Southern Province whose birth was registered by sex, district and area of residence

Provinces and Districts	Total			Urban			Rural		
	Both sexes	Male	Female	Both sexes	Male	Female	Both sexes	Male	Female
<b>Rwanda</b>	<b>79.0</b>	<b>79.0</b>	<b>79.0</b>	<b>74.1</b>	<b>74.3</b>	<b>73.9</b>	<b>79.8</b>	<b>79.7</b>	<b>79.8</b>
<b>Southern Province</b>	<b>79.8</b>	<b>79.8</b>	<b>79.9</b>	<b>79.5</b>	<b>79.1</b>	<b>79.8</b>	<b>79.9</b>	<b>79.8</b>	<b>79.9</b>
Nyanza	78.2	78.2	78.3	77.4	77.0	77.8	78.3	78.3	78.3
Gisagara	74.8	74.6	74.9	82.7	81.0	84.5	74.6	74.5	74.8
Nyaruguru	84.5	84.5	84.5	80.6	80.3	80.9	84.6	84.6	84.6
Huye	81.2	81.1	81.3	72.8	72.6	73.0	82.4	82.3	82.5
Nyamagabe	72.7	72.7	72.7	77.0	76.3	77.6	72.4	72.5	72.4
Ruhango	77.1	76.9	77.3	76.0	75.3	76.8	77.2	77.0	77.4
Muhanga	87.5	87.5	87.5	84.3	83.9	84.6	88.0	88.0	87.9
<b>Kamonyi district</b>	<b>83.9</b>	<b>83.8</b>	<b>84.1</b>	<b>85.2</b>	<b>85.1</b>	<b>85.4</b>	<b>83.8</b>	<b>83.7</b>	<b>83.9</b>

Source: Rwanda 4<sup>th</sup> Population and Housing Census, 2012 (NISR)

- At national level, the percentage of children whose birth was registered is 79%.
- The situation is better in Muhanga (87%), Nyaruguru (84%) and Kamonyi (83%) whose percentage of birth registration is higher than the average of Southern province.
- Nyamagabe is the district in Southern Province with a low percentage (72.7%) of children whose birth was registered at the time of census.
- Birth registration varies slightly by sex in Kamonyi district while it varies a lot by area of residence and it is more common in urban (85.2%) than in rural areas (83.8%).

Table 18: Percentage of the children aged 0-17 in Kamonyi district whose birth was registered by sex, Sector and area of residence

Sectors	Total			Urban			Rural		
	Both sexes	Male	Female	Both sexes	Male	Female	Both sexes	Male	Female
Rwanda	79.0	79.0	79.0	74.1	74.3	73.9	79.8	79.7	79.8
Southern Province	79.8	79.8	79.9	79.5	79.1	79.8	79.9	79.8	79.9
<b>Kamonyi</b>	<b>83.9</b>	<b>83.8</b>	<b>84.1</b>	<b>85.2</b>	<b>85.1</b>	<b>85.4</b>	<b>83.8</b>	<b>83.7</b>	<b>83.9</b>
Gacurabwenge	84.5	84.5	84.4	0.0	0.0	0.0	84.5	84.5	84.4
Karama	86.3	86.3	86.3	0.0	0.0	0.0	86.3	86.3	86.3
Kayenzi	91.0	90.6	91.3	0.0	0.0	0.0	91.0	90.6	91.3
Kayumbu	84.4	84.0	84.8	0.0	0.0	0.0	84.4	84.0	84.8
Mugina	84.7	84.3	85.2	85.9	86.0	85.8	84.0	83.3	84.8
Musambira	87.9	87.4	88.4	89.3	88.5	90.2	87.5	87.0	87.9
Ngamba	87.7	87.8	87.6	0.0	0.0	0.0	87.7	87.8	87.6
Nyamiyaga	80.6	81.0	80.2	0.0	0.0	0.0	80.6	81.0	80.2
Nyarubaka	82.1	81.6	82.5	0.0	0.0	0.0	82.1	81.6	82.5
Rugarika	82.7	82.3	83.1	0.0	0.0	0.0	82.7	82.3	83.1
Rukoma	82.2	81.9	82.5	85.5	84.8	86.1	81.9	81.6	82.1
Runda	79.6	80.4	78.7	81.5	81.5	81.5	78.5	79.8	77.2

Source: Rwanda 4<sup>th</sup> Population and Housing Census, 2012 (NISR)

- Birth registration varies across sectors. The highest percentage of registered children is in Kayenzi Sector (91%) while the lowest is in Runda Sector (79.6%).
- The percentage of birth registration for males is almost the same as for females.

### 3.1.3. Economically active children

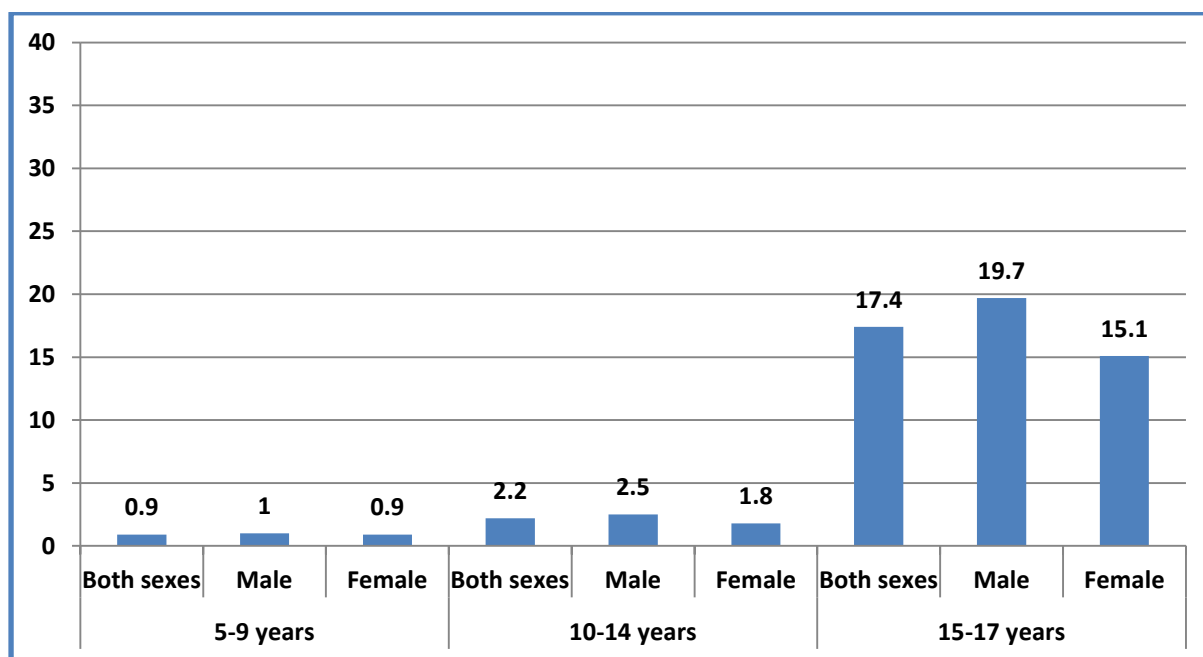
Table 19: Percentage of children aged 5-17 years currently employed by age group and sex, and by district

Districts	5-9years			10-14years			15-17years		
	Total	Male	Female	Total	Male	Female	Total	Male	Female
Rwanda	0.9	1.0	0.9	2.8	3.0	2.7	21.2	20.8	21.6
Southern Province	0.9	0.9	0.8	2.2	2.5	2.0	17.3	17.7	16.8
Nyanza	0.8	0.9	0.8	2.4	2.9	1.9	18.2	18.5	17.8
Gisagara	1.0	1.0	1.1	2.8	3.2	2.5	18.9	18.3	19.6
Nyaruguru	0.7	0.7	0.6	2.2	2.3	2.0	13.4	13.1	13.8
Huye	1.0	1.1	1.0	2.4	2.5	2.2	18.4	18.1	18.8
Nyamagabe	0.8	0.8	0.8	1.7	1.9	1.6	12.9	12.9	12.9
Ruhango	1.2	1.2	1.1	2.2	2.4	2.0	16.3	16.9	15.7
Muhanga	0.5	0.5	0.4	2.1	2.3	2.0	23.1	24.4	21.8
<b>Kamonyi district</b>	<b>0.9</b>	<b>1.0</b>	<b>0.9</b>	<b>2.2</b>	<b>2.5</b>	<b>1.8</b>	<b>17.4</b>	<b>19.7</b>	<b>15.1</b>

Source: Rwanda 4<sup>th</sup> Population and Housing Census, 2012 (NISR)

Children labour depends on their ages.

- Between 5 and 9 years few children (0.9%) were employed seven days preceding the census at the national level. This percentage is 0.9% in Kamonyi district. There is a slight difference between girls and boys.
- Between 10 years and 14 years, the percentage of children who were employed seven days preceding the census is 2.8% at the national level, while it is 2.2% in Kamonyi district.
- Between 15-17years, 21.2% of children were employed seven days preceding the census at national level. This percentage is 17.4% in Kamonyi district.

**Figure 6:** Employment among children aged 5-17 years in Kamonyi district by sex**Table 20:** Percentage of children aged 5-17 years currently employed by age group and sex and by sector in Kamonyi district

Sectors	5-9 years			10-14 years			15-17 years		
	Both sexes	Male	Female	Both sexes	Male	Female	Both sexes	Male	Female
Rwanda	0.9	1.0	0.9	2.8	3.0	2.7	21.2	20.8	21.6
Southern Province	0.9	0.9	0.8	2.2	2.5	2.0	17.3	17.7	16.8
Kamonyi district	0.9	1.0	0.9	2.2	2.5	1.8	17.4	19.7	15.1
Gacurabwenge	1.8	1.9	1.7	3.3	4.0	2.6	14.7	18.4	11.0
Karama	0.5	0.5	0.6	1.5	2.1	0.8	16.5	19.7	13.4
Kayenzi	0.4	0.3	0.5	2.1	2.9	1.3	17.8	21.5	13.8
Kayumbu	1.8	1.9	1.7	2.4	2.3	2.5	13.6	15.1	12.2
Mugina	1.3	1.3	1.2	2.9	2.7	3.0	24.5	26.1	22.8
Musambira	0.4	0.5	0.2	1.2	1.6	0.8	10.4	11.3	9.4
Ngamba	0.3	0.2	0.3	0.6	0.5	0.6	14.5	20.5	8.5
Nyamiyaga	1.5	1.5	1.6	3.5	3.5	3.4	22.1	23.5	20.6
Nyarubaka	0.5	0.7	0.3	1.5	1.6	1.3	17.6	18.9	16.3
Rugarika	1.2	1.2	1.2	2.2	2.9	1.5	18.4	19.7	17.1
Rukoma	0.7	0.9	0.6	1.8	2.5	1.2	17.7	23.5	11.9
Runda	0.3	0.3	0.2	1.5	1.5	1.4	17.3	17.0	17.6

Source: Rwanda 4<sup>th</sup> Population and Housing Census, 2012 (NISR)

- Kayumbu and Gacurabwenge Sectors have the highest percentage (1.8% each) of employed children aged between 5-9 years while Nyamiyaga has a big percentage of employed children aged 10-14 (3.5%). Mugina is the sector which has a high percentage (24.5%) of children aged 15-17 years employed.



- In the age group 15-17 years, males are generally more employed than females in all sectors.

### 3.1.4. Youth population

Table 21: Number and share (%) of the resident youth aged 14-35 years among the total resident population in Kamonyi district by Sector of residence and sex (Both sexes)

Sectors	Total resident population			Youth resident population			Youth Share (%)		
	Both sexes	Male	Female	Both sexes	Male	Female	Both sexes	Male	Female
<b>Rwanda</b>	<b>10,515,973</b>	<b>5,064,868</b>	<b>5,451,105</b>	<b>4,166,777</b>	<b>2,033,130</b>	<b>2,133,647</b>	<b>39.6</b>	<b>40.1</b>	<b>39.1</b>
<b>Southern Province</b>	<b>2589975</b>	<b>1233754</b>	<b>1356221</b>	<b>964671</b>	<b>466566</b>	<b>498105</b>	<b>37.2</b>	<b>37.8</b>	<b>36.7</b>
<b>Kamonyi district</b>	<b>340,501</b>	<b>162,189</b>	<b>178,312</b>	<b>128466</b>	<b>62366</b>	<b>66100</b>	<b>37.7</b>	<b>38.5</b>	<b>37.1</b>
Gacurabwenge	27,850	13,112	14,738	10799	5239	5560	38.8	40.0	37.7
Karama	18,717	8,758	9,959	6770	3204	3566	36.2	36.6	35.8
Kayenzi	22,787	10,920	11,867	8554	4166	4388	37.5	38.2	37.0
Kayumbu	15,530	7,351	8,179	5741	2747	2994	37.0	37.4	36.6
Mugina	38,709	18,446	20,263	14050	6734	7316	36.3	36.5	36.1
Musambira	34,025	16,073	17,952	12729	6138	6591	37.4	38.2	36.7
Ngamba	14,175	6,778	7,397	5418	2613	2805	38.2	38.6	37.9
Nyamiyaga	38,945	18,489	20,456	14031	6639	7392	36.0	35.9	36.1
Nyarubaka	25,155	11,774	13,381	9035	4358	4677	35.9	37.0	35.0
Rugarika	34,860	16,676	18,184	13590	6624	6966	39.0	39.7	38.3
Rukoma	34,909	16,529	18,380	13009	6391	6618	37.3	38.7	36.0
Runda	34,839	17,283	17,556	14740	7513	7227	42.3	43.5	41.2

Source: Rwanda 4<sup>th</sup> Population and Housing Census, 2012 (NISR)

Youth is defined in Rwanda as the population aged 14 to 35.

- At the time of census, young people in Kamonyi district were 128,466 which represent 37.7% of the total resident population of the district (340,504).
- Although the share of youth is almost the same among males and females at district level, it varies a little across sectors of the district.
- Sectors with the highest youth share are Runda (42.3%), Gacurabwenge (38.8%) and Rugarika (39%).

### 3.1.5. Educational characteristics of youth

Table 22: Distribution (count and %) of the resident youth of Kamonyi district aged 14-35 years by Sector of residence and school attendance status (Both sexes)

District and Sectors	Count				%			
	Total	Currently attending	No longer attending	Never attended	Total	Currently attending	No longer attending	Never attended
<b>Rwanda</b>	<b>4,166,777</b>	<b>1,223,587</b>	<b>2,427,974</b>	<b>515,216</b>	<b>100</b>	<b>29.4</b>	<b>58.3</b>	<b>12.4</b>
<b>Southern Province</b>	<b>964,671</b>	<b>299,109</b>	<b>547,114</b>	<b>118,448</b>	<b>100</b>	<b>31.0</b>	<b>56.7</b>	<b>12.3</b>
<b>Kamonyi district</b>	<b>128466</b>	<b>39969</b>	<b>76775</b>	<b>11722</b>	<b>100</b>	<b>31.1</b>	<b>59.8</b>	<b>9.1</b>
Gacurabwenge	10799	3875	6154	770	100	35.9	57.0	7.1
Karama	6770	2182	4130	458	100	32.2	61.0	6.8
Kayenzi	8554	2777	5308	469	100	32.5	62.1	5.5
Kayumbu	5741	1692	3556	493	100	29.5	61.9	8.6
Mugina	14050	3695	8811	1544	100	26.3	62.7	11.0
Musambira	12729	4564	6820	1345	100	35.9	53.6	10.6
Ngamba	5418	1737	3356	325	100	32.1	61.9	6.0
Nyamiyaga	14031	3791	8397	1843	100	27.0	59.8	13.1
Nyarubaka	9035	2553	5428	1054	100	28.3	60.1	11.7
Rugarika	13590	3973	8327	1290	100	29.2	61.3	9.5
Rukoma	13009	4649	7454	906	100	35.7	57.3	7.0
Runda	14740	4481	9034	1225	100	30.4	61.3	8.3

Source: Rwanda 4<sup>th</sup> Population and Housing Census, 2012 (NISR)

- Youth who have never attended school represent 12.4% of the total resident population at national level; it represents 12.3% of the total resident youth population in the Southern Province and 9.1% of the total resident youth population of Kamonyi district.
- The percentage of youth who never attended school varies gradually within Sectors of Kamonyi district. The highest percentage was registered in Nyamiyaga (13.1%), Nyarubaka (11.7%) and Mugina (11%).

Table 23: Distribution (count and %) of the youth population of Kamonyi district aged 14-35 years by Sector of residence and highest level of education attained (Both sexes)

District / Sectors	Total (count)	Total (%)	No schooling	Preschool	Primary	Post-primary	Secondary	University	Not stated
<b>Rwanda</b>	<b>4,166,777</b>	<b>100</b>	<b>12.4</b>	<b>0.3</b>	<b>61.4</b>	<b>0.2</b>	<b>21.7</b>	<b>3.3</b>	<b>0.8</b>
<b>Southern Province</b>	<b>964,671</b>	<b>100</b>	<b>12.3</b>	<b>0.2</b>	<b>64.1</b>	<b>0.2</b>	<b>20.1</b>	<b>2.2</b>	<b>0.9</b>
<b>Kamonyi district</b>	<b>128466</b>	<b>100</b>	<b>9.1</b>	<b>0.2</b>	<b>65.8</b>	<b>0.3</b>	<b>21.9</b>	<b>1.7</b>	<b>1.0</b>
Gacurabwenge	10799	100	7.1	0.2	60.8	0.3	28.1	2.4	1.1
Karama	6770	100	6.8	0.1	66.9	0.2	24.0	1.5	0.6
Kayenzi	8554	100	5.5	0.7	67.4	0.4	23.4	1.8	0.9
Kayumbu	5741	100	8.6	0.1	68.1	0.2	20.2	1.1	1.8
Mugina	14050	100	11.0	0.1	69.0	0.2	17.9	1.0	0.8
Musambira	12729	100	10.6	0.5	63.0	0.2	23.0	1.8	1.0
Ngamba	5418	100	6.0	0.0	67.6	0.1	24.0	1.2	1.1
Nyamiyaga	14031	100	13.1	0.2	68.7	0.2	16.3	0.7	0.8
Nyarubaka	9035	100	11.7	0.1	70.5	0.2	15.6	1.0	1.0
Rugarika	13590	100	9.5	0.2	67.8	0.4	19.7	1.5	0.9
Rukoma	13009	100	7.0	0.2	62.8	0.3	26.4	2.2	1.1
Runda	14740	100	8.3	0.1	60.6	0.4	25.8	3.7	1.0

Source: Rwanda 4<sup>th</sup> Population and Housing Census, 2012 (NISR)

- In Kamonyi district, among youth, 65.8% attained primary school level, 21.9% attained secondary education, 1.7% went to university and 9.1% have no education.
- The highest level of education attained varies across sectors of the district.
  - The sectors with high percentage of youth with no schooling are Nyamiyaga (13.1%), Nyarubaka (11.7%) and Mugina (11%).
  - High number of youth with university level is in Runda sector (3.7%) and 28.1% of youth in Gacurabwenge attained secondary level.
  - The sectors with high percentages of youth with primary education are Nyarubaka (70.5%), Mugina (69%) and Nyamiyaga (68.7%).

### 3.1.6. Economically active youth

Table 24: Distribution (count and %) of the resident youth of Kamonyi district aged 14-35 years by economic activity status and sex, and by sector of residence

Sector of residence	Total (count)	Total (%)	Employed			Unemployed			Inactive			Not stated		
			Both sexes	Male	Female	Both sexes	Male	Female	Both sexes	Male	Female	Both sexes	Male	Female
<b>Rwanda</b>	<b>4,166,777</b>	<b>100</b>	<b>59,6</b>	<b>29,7</b>	<b>29,9</b>	<b>2,5</b>	<b>1,0</b>	<b>1,5</b>	<b>36,6</b>	<b>17,2</b>	<b>19,4</b>	<b>1,3</b>	<b>0,9</b>	<b>0,4</b>
<b>Southern Province</b>	<b>964,671</b>	<b>100</b>	<b>56,8</b>	<b>27,9</b>	<b>28,9</b>	<b>2,3</b>	<b>0,9</b>	<b>1,4</b>	<b>39,9</b>	<b>18,8</b>	<b>21,0</b>	<b>1,1</b>	<b>0,7</b>	<b>0,4</b>
<b>Kamonyi district</b>	<b>128,466</b>	<b>100</b>	<b>60,9</b>	<b>30,6</b>	<b>30,4</b>	<b>1,9</b>	<b>0,7</b>	<b>1,2</b>	<b>37,0</b>	<b>17,2</b>	<b>19,8</b>	<b>0,2</b>	<b>0,1</b>	<b>0,1</b>
Gacurabwenge	10799	100	51.9	27.5	24.5	3.3	1.2	2.1	44.4	19.7	24.6	0.4	0.1	0.2
Karama	6770	100	65.5	31.2	34.3	0.8	0.3	0.5	33.8	15.9	17.9	0.0	0.0	0.0
Kayenzi	8554	100	64.5	31.9	32.6	0.7	0.3	0.5	34.7	16.4	18.2	0.1	0.1	0.0
Kayumbu	5741	100	52.9	27.0	26.0	1.7	0.8	0.9	45.4	20.1	25.3	0.0	0.0	0.0
Mugina	14050	100	67.2	32.4	34.8	1.7	0.5	1.2	31.0	14.9	16.1	0.1	0.1	0.0
Musambira	12729	100	54.1	26.5	27.7	2.5	0.9	1.6	43.2	20.8	22.4	0.2	0.1	0.1
Ngamba	5418	100	59.7	30.0	29.7	1.7	0.9	0.7	38.4	17.2	21.2	0.3	0.2	0.1
Nyamiyaga	14031	100	67.1	31.7	35.4	2.5	0.9	1.6	30.3	14.7	15.6	0.0	0.0	0.0
Nyarubaka	9035	100	56.3	28.1	28.2	1.7	0.7	1.0	42.0	19.5	22.5	0.0	0.0	0.0
Rugarika	13590	100	64.7	32.4	32.3	1.4	0.5	0.9	33.7	15.7	17.9	0.2	0.1	0.1
Rukoma	13009	100	60.7	31.0	29.7	1.3	0.6	0.7	37.9	17.5	20.5	0.1	0.1	0.0
Runda	14740	100	60.4	33.4	27.1	2.7	0.9	1.8	36.5	16.5	20.1	0.3	0.3	0.1

Source: Rwanda 4<sup>th</sup> Population and Housing Census, 2012 (NISR)

- In Kamonyi district, 60.9%, of youth was employed at the time of census while 37% were out of the labour market (inactive). Only 1.9% was unemployed during census.
- Mugina sector had the highest percentage (67.2%) of employed youth, Nyamiyaga (67.1%) and Karama (65.5%).
- High percentage of unemployed youth is in Gacurabwenge Sector (3.3%) while the low is in Kayenzi Sector (0.7%).
- At the time of census, the youth out of labour market was high in Kayumbu (45.4%) and Gacurabwenge (44.4%) sectors.

Table 25: Distribution (%) of the currently employed youth of Kamonyi district aged 14-35 years by employment status and sex (box sexes)

Sectors	Total youth	Total	Employee	Employer	Self-employed	Contributing family worker	Producers cooperative member	Other	Not Stated
Rwanda	4166777	100	21,4	0,4	61,4	12,1	0,3	0,2	4,2
Southern Province	964,671	100	18,5	0,4	58,8	16,3	0,5	0,2	5,3
Kamonyi district	128466	100	17,2	0,4	62,6	15,6	0,2	0,1	3,9
Gacurabwenge	10799	100	25,8	0,5	52,1	13,6	0,1	0,0	7,9
Karama	6770	100	7,8	0,2	81,8	8,0	0,0	0,0	2,1
Kayenzi	8554	100	13,7	0,3	64,4	17,0	0,1	0,1	4,5
Kayumbu	5741	100	9,4	0,3	67,1	16,3	1,5	0,0	5,5
Mugina	14050	100	14,7	0,5	61,5	21,0	0,2	0,1	2,1
Musambira	12729	100	15,5	0,4	68,4	9,7	0,1	0,1	5,9
Ngamba	5418	100	13,2	0,3	68,8	15,8	0,6	0,1	1,3
Nyamiyaga	14031	100	14,0	0,5	60,4	21,0	0,3	0,1	3,8
Nyarubaka	9035	100	11,6	0,4	59,5	21,8	0,1	0,3	6,5
Rugarika	13590	100	17,0	0,2	72,2	8,4	0,1	0,0	2,1
Rukoma	13009	100	14,7	0,5	62,8	17,9	0,6	0,2	3,3
Runda	14740	100	35,7	0,4	45,7	13,9	0,1	0,1	4,1

Source: Rwanda 4<sup>th</sup> Population and Housing Census, 2012 (NISR)

- In Kamonyi district, majority of youth aged 14-35 currently employed are self-employed (62.6%), followed by employees (17.2%) and contributing family workers (15.6%).
- The highest percentage of employee youth is in Runda sector (35.7%) and the lowest is in Karama sectors (7.8%).
- Majority of youth in Karama and Rugarika sectors are self-employed (81.8% and 72.2% respectively) while the low percentage of self-employed youth are in Runda (45.7%) and Gacurabwenge (52.1%) sectors.

### 3.2. Persons with Disabilities

Table 25: Number and share (%) of persons with disabilities of Kamonyi district aged 5 years and above (Prevalence of disabilities) by Sector of residence and sex

District and Sectors	Total population (5 years and above)	Number of persons with disabilities			Prevalence of disabilities (% of persons with disabilities)
	Both sexes	Both sexes	Male	Female	Both sexes
<b>Rwanda</b>	<b>8,975,946</b>	<b>446,453</b>	<b>221,150</b>	<b>225,303</b>	<b>5.0</b>
<b>Southern Province</b>	<b>1,048,397</b>	<b>122,319</b>	<b>59,361</b>	<b>62,958</b>	<b>5.5</b>
<b>Kamonyi district</b>	<b>292500</b>	<b>16032</b>	<b>7745</b>	<b>8287</b>	<b>5.5</b>
Gacurabwenge	23988	1452	686	766	6.1
Karama	16032	675	331	344	4.2
Kayenzi	19990	1158	541	617	5.8
Kayumbu	13550	557	251	306	4.1
Mugina	32942	1809	880	929	5.5
Musambira	29385	2072	990	1082	7.1
Ngamba	12376	354	187	167	2.9
Nyamiyaga	32765	2292	1084	1208	7.0
Nyarubaka	21704	1375	647	728	6.3
Rugarika	29408	1707	832	875	5.8
Rukoma	30419	1423	691	732	4.7
Runda	29941	1158	625	533	3.9

Source: Rwanda 4<sup>th</sup> Population and Housing Census, 2012 (NISR)

- At national level, 5% of the resident population aged 5 years and above have a disability.
- In Southern Province, the prevalence rate of disability among resident population aged 5 years is 5.5%, while in Kamonyi district, it is 5.5%.
- At sector level, high prevalence rate of disability is in Musambira (7.1%) and low in Runda (3.9%).

### 3.3. Elderly Population

#### 3.3.3. Elderly share

Table 26: Number and share (%) of the resident elderly (aged 60 years and above) among the total resident population in Kamonyi district by Sector of residence and sex

Sector of residence	Total Resident population			Total resident elderly			Population share (% of elderly among the resident population)		
	Both sexes	Male	Female	Both sexes	Male	Female	Both sexes	Male	Female
Rwanda	10,515,973	5,064,868	5,451,105	511,738	207,239	304,499	4.9	4.1	5.6
Southern Province	2,589,975	1,233,754	1,356,221	147,023	58,057	88,966	5.7	4.7	6.6
Kamonyi district	340,501	162,189	178,312	18,498	7,051	11,447	5.4	4.3	6.4
Gacurabwenge	27,850	13,112	14,738	1,561	550	1,011	5.6	4.2	6.9
Karama	18,717	8,758	9,959	1,139	455	684	6.1	5.2	6.9
Kayenzi	22,787	10,920	11,867	1,508	603	905	6.6	5.5	7.6
Kayumbu	15,530	7,351	8,179	978	385	593	6.3	5.2	7.3
Mugina	38,709	18,446	20,263	1,695	638	1,057	4.4	3.5	5.2
Musambira	34,025	16,073	17,952	1,905	696	1,209	5.6	4.3	6.7
Ngamba	14,175	6,778	7,397	938	393	545	6.6	5.8	7.4
Nyamiyaga	38,945	18,489	20,456	1,699	627	1,072	4.4	3.4	5.2
Nyarubaka	25,155	11,774	13,381	1,490	565	925	5.9	4.8	6.9
Rugarika	34,860	16,676	18,184	1,586	571	1,015	4.5	3.4	5.6
Rukoma	34,909	16,529	18,380	2,424	935	1,489	6.9	5.7	8.1
Runda	34,839	17,283	17,556	1,575	633	942	4.5	3.7	5.4

Source: Rwanda 4<sup>th</sup> Population and Housing Census, 2012 (NISR)

- In 2012, the elderly persons constituted 5.4% of the total resident population of Kamonyi district.
- The share of elderly females is higher than males (6.4% vs. 4.3%), reflecting the high life expectancy of women.
- The elderly share is both high in Rukoma (6.9%) and low in Mugina and Nyamiyaga (4.4% each).



### 3.3.4. Economically active elderly

Table 27: Distribution (count) of the elderly resident (aged 60 years and above) by economic activity status and sex, and by sector of residence

Sector of residence	Total resident elderly			Currently employed elderly			% of employed elderly		
	Both sexes	Male	Female	Both sexes	Male	Female	Both sexes	Male	Female
<b>Rwanda</b>	<b>511,738</b>	<b>207,239</b>	<b>304,499</b>	<b>271,605</b>	<b>117,822</b>	<b>153,783</b>	<b>53.1</b>	<b>56.9</b>	<b>50.5</b>
<b>Southern Province</b>	<b>147,023</b>	<b>58,057</b>	<b>88,966</b>	<b>75,147</b>	<b>31,078</b>	<b>44,069</b>	<b>51.1</b>	<b>53.5</b>	<b>49.5</b>
<b>Kamonyi district</b>	<b>18,498</b>	<b>7,051</b>	<b>11,447</b>	<b>10,781</b>	<b>4,460</b>	<b>6,321</b>	<b>58.3</b>	<b>63.3</b>	<b>55.2</b>
Gacurabwenge	1,561	550	1,011	758	295	463	48.6	53.6	45.8
Karama	1,139	455	684	702	288	414	61.6	63.3	60.5
Kayenzi	1,508	603	905	989	413	576	65.6	68.5	63.6
Kayumbu	978	385	593	445	185	260	45.5	48.1	43.8
Mugina	1,695	638	1,057	1,029	426	603	60.7	66.8	57.0
Musambira	1,905	696	1,209	913	400	513	47.9	57.5	42.4
Ngamba	938	393	545	604	271	333	64.4	69.0	61.1
Nyamiyaga	1,699	627	1,072	982	400	582	57.8	63.8	54.3
Nyarubaka	1,490	565	925	794	346	448	53.3	61.2	48.4
Rugarika	1,586	571	1,015	1,025	402	623	64.6	70.4	61.4
Rukoma	2,424	935	1,489	1,694	670	1,024	69.9	71.7	68.8
Runda	1,575	633	942	846	364	482	53.7	57.5	51.2

Source: Rwanda 4<sup>th</sup> Population and Housing Census, 2012 (NISR)

- In Kamonyi district, people keep on working until old ages. 58.3% of the elderly population were still working at the time of census.
- The percentage of employed elderly males is higher than females (63.3% vs. 55.2%).
- Employment among elderly resident is high in Rukoma (69.9%) and low in Kayumbu (45.5%).

### 3.3.5. Marital status of elderly

Table 28: Distribution (%) of the elderly resident (aged 60 years and above) in Kamonyi district by sector of residence and marital status (Both sexes)

District and Sectors	Both sexes						
	Total resident elderly	All	Never married	Currently married	Widowed	Divorced/separated	Not stated
Rwanda	511,738	100	2.2	56.5	38.6	2.5	0.2
Southern Province	147,023	100	1.9	54.9	40.2	2.8	0.2
Kamonyi district	18,498	100	1.8	55.3	40	2.6	0.3
Gacurabwenge	1,561	100	2.9	52.1	42.5	2.1	0.3
Karama	1,139	100	0.9	61.3	35.2	2.5	0.2
Kayenzi	1,508	100	2.5	63.5	32	1.9	0.1
Kayumbu	978	100	1.3	59.5	36.9	1.7	0.5
Mugina	1,695	100	1.7	50.1	44.7	3.1	0.4
Musambira	1,905	100	2.2	53.8	40.3	3.1	0.6
Ngamba	938	100	1.3	61.5	34.3	2.3	0.5
Nyamiyaga	1,699	100	1.8	53.1	41.4	3.4	0.2
Nyarubaka	1,490	100	1.6	52.3	42.2	3.8	0.1
Rugarika	1,586	100	1.9	50.2	45.1	2.5	0.3
Rukoma	2,424	100	1.4	58.1	37.7	2.4	0.3
Runda	1,575	100	1.5	53	42.7	2.4	0.4

Source: Rwanda 4<sup>th</sup> Population and Housing Census, 2012 (NISR)

- In Kamonyi district, 55.3% of elderly are married and 40.0% are widowed.
- Marital status among elderly varies slightly by sector of residence. Marriage rate is high in Kayenzi (63.5%) and Ngamba (61.5%) sectors.
- Conversely widowhood is widespread in Rugarika (45.1%) and Mugina (44.7%) sectors.

## Chapter 4: Households and Housing Characteristics

### 4.1. Households Characteristics

#### 4.1.1. Average size of households

Table 29: Number of private households of Kamonyi district and their corresponding population by Sector and mean size of private households

Sectors	Number of private households	Corresponding population	Mean size of private household
<b>Rwanda</b>	<b>2,424,898</b>	<b>10,378,021</b>	<b>4.3</b>
<b>Southern Province</b>	<b>603,800</b>	<b>2,547,846</b>	<b>4.2</b>
<b>Kamonyi district</b>	<b>80,468</b>	<b>340077</b>	<b>4.2</b>
Gacurabwenge	6,470	27778	4.3
Karama	4,367	18717	4.3
Kayenzi	5,346	22779	4.3
Kayumbu	3,787	15530	4.1
Mugina	9,364	38690	4.1
Musambira	7,914	33991	4.3
Ngamba	3,242	14137	4.4
Nyamiyaga	9,293	38938	4.2
Nyarubaka	6,015	25151	4.2
Rugarika	8,510	34798	4.1
Rukoma	7,888	34899	4.4
Runda	8,272	34669	4.2

Source: Rwanda 4<sup>th</sup> Population and Housing Census, 2012 (NISR)

- The average household size in Kamonyi district is 4.2 persons.
- At the Sector level, household size varies between 4.4 and 4.1 persons.

## 4.1.2 Private households' heads in Kamonyi district

Table 30: Distribution (count and %) of private households' heads in Kamonyi district by Sector and sex

Sectors	Count			%		
	Total number of private households	Households headed by Male	Households headed by Female	Total	Households headed by Male	Households headed by Female
Rwanda	2,424,898	1,728,945	695,953	100	71.3	28.7
Southern Province	603,800	406,290	197,510	100	67.3	32.7
Kamonyi district	80,468	56333	24135	100	70.0	30.0
Gacurabwenge	6,470	4213	2257	100	65.1	34.9
Karama	4,367	3090	1277	100	70.8	29.2
Kayenzi	5,346	4023	1323	100	75.3	24.7
Kayumbu	3,787	2769	1018	100	73.1	26.9
Mugina	9,364	6605	2759	100	70.5	29.5
Musambira	7,914	5349	2565	100	67.6	32.4
Ngamba	3,242	2355	887	100	72.6	27.4
Nyamiyaga	9,293	6439	2854	100	69.3	30.7
Nyarubaka	6,015	4123	1892	100	68.5	31.5
Rugarika	8,510	5897	2613	100	69.3	30.7
Rukoma	7,888	5382	2506	100	68.2	31.8
Runda	8,272	6088	2184	100	73.6	26.4

Source: Rwanda 4<sup>th</sup> Population and Housing Census, 2012 (NISR)

- At national level, 28.7% of private households are headed by women.
- High percentage of female-headed households is found in Gacurabwenge (34%) and low in Kayenzi (24%) sectors.

## 4.2. Housing Characteristics

### 4.2.1. Type of habitat

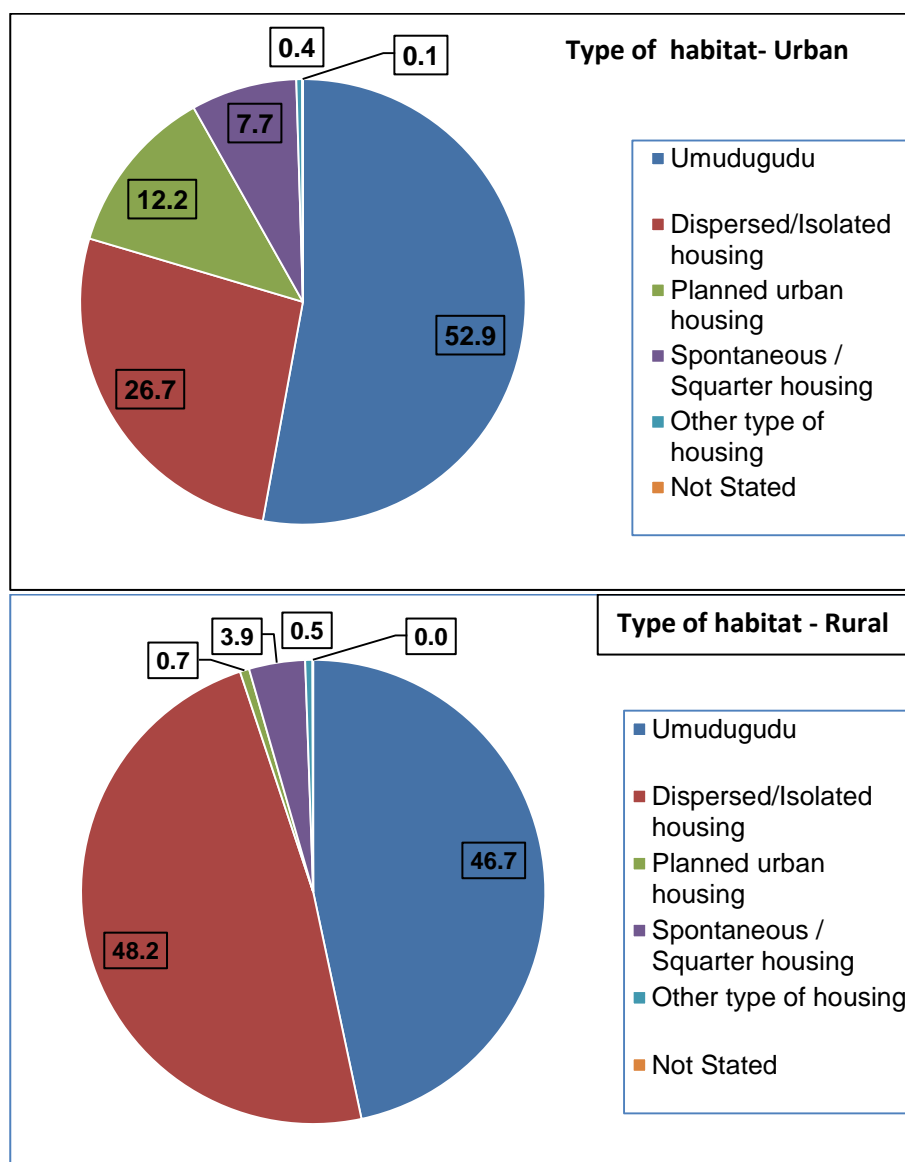
Table 31: Distribution (count and %) of the private households in Kamonyi district by type of habitat and Sector

Sectors	Total number of private households	Total (%)	clustered rural settlement (Umudugudu)	Dispersed/isolated housing	Planned urban housing	Spontaneous / Squatter housing	Other type of housing	Not Stated
Rwanda	2,424,898	100	49.4	33.7	2.2	14.1	0.6	0.1
Southern Province	603,800	100	46.2	45.2	0.7	7.0	0.8	0.1
Kamonyi district	80,468	100	47.4	45.7	2.0	4.3	0.5	0.0
Gacurabwenge	6,470	100	58.2	35.3	0.3	5.8	0.3	0.0
Karama	4,367	100	46.0	52.0	0.5	1.4	0.0	0.1
Kayenzi	5,346	100	34.9	60.5	0.3	4.2	0.0	0.1
Kayumbu	3,787	100	39.7	42.2	0.1	18.1	0.0	0.0
Mugina	9,364	100	79.2	17.1	0.1	2.7	0.9	0.0
Musambira	7,914	100	48.7	50.2	0.2	0.8	0.1	0.1
Ngamba	3,242	100	26.4	73.3	0.0	0.2	0.0	0.1
Nyamiyaga	9,293	100	44.6	52.5	0.5	1.1	1.3	0.0
Nyarubaka	6,015	100	52.8	43.4	0.3	1.6	1.8	0.0
Rugarika	8,510	100	56.6	36.9	0.2	6.2	0.0	0.0
Rukoma	7,888	100	30.9	62.5	0.4	5.9	0.3	0.1
Runda	8,272	100	27.5	46.8	17.2	7.9	0.5	0.1

Source: Rwanda 4<sup>th</sup> Population and Housing Census, 2012 (NISR)

- The most common type of habitat in Kamonyi district is clustered rural settlement (Umudugudu) (47.4%), followed by dispersed/isolated housing (45.7%) and spontaneous/squatter housing (4.3%).
- Percentage of dispersed/isolated housing across sectors varies between 30% and 73.3%.
- Ngamba and Rukoma are the sectors with high percentage of dispersed/isolated habitat (73.3% and 62.5% respectively) while Kayumbu has more spontaneous/squatter housing (18.1%).

**Figure 7:** Distribution (%) of private households of Kamonyi district by type of habitat and by area of residence



Source: Rwanda 4<sup>th</sup> Population and Housing Census, 2012 (NISR)

The type of habitat varies according to the area of residence.

- In urban areas, the predominant type of habitat is clustered rural settlement (umudugudu) (52.9%), dispersed/isolated housing (26.7%) and the spontaneous/squatter housing with 12.2%.
- In rural areas, the predominant type of habitat is dispersed/isolated housing with 48.2% and clustered rural settlement (umudugudu) with 46.7%.

#### 4.2.2. Tenure of the housing

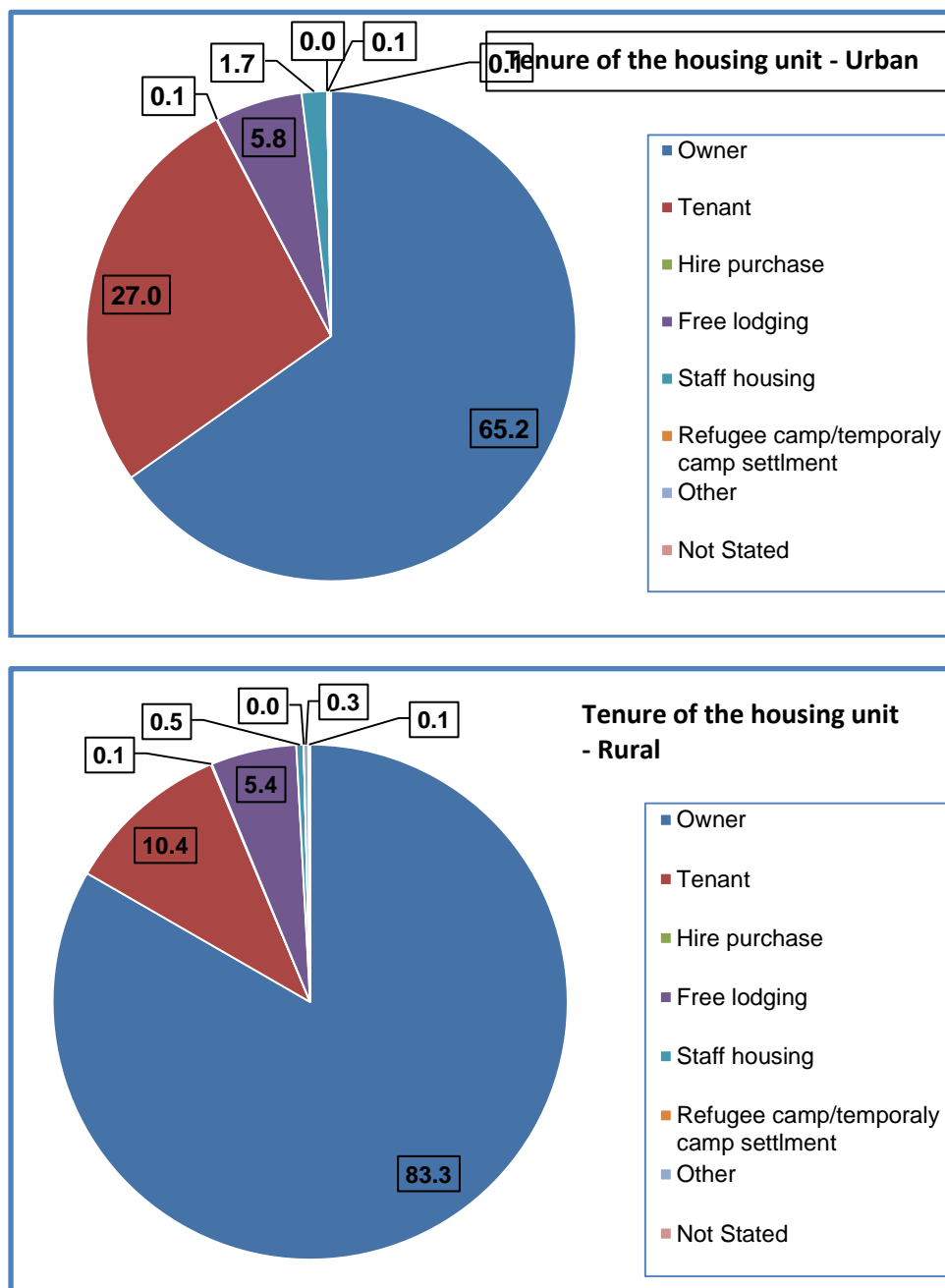
Table 32: Distribution (%) of private households in Kamonyi district by tenure of housing units and by Sector

Sectors	Total number of private households	Total	Owner	Tenant	Hire purchase	Free lodging	Staff housing	Other	Not Stated
Rwanda	2,424,898	100	80.0	14.8	0.1	4.2	0.6	0.2	0.1
Southern Province	603,800	100	82.5	10.1	0.1	6.4	0.5	0.4	0.1
Kamonyi district	80,468	100	81.2	12.3	0.1	5.4	0.6	0.3	0.1
Gacurabwenge	6,470	100	77.4	14.4	0.1	6.4	1.1	0.5	0.2
Karama	4,367	100	89.2	4.3	0.0	5.9	0.4	0.1	0.0
Kayenzi	5,346	100	91.4	4.5	0.1	3.5	0.5	0.0	0.1
Kayumbu	3,787	100	90.4	3.7	0.0	5.1	0.2	0.4	0.1
Mugina	9,364	100	74.6	19.1	0.1	5.6	0.5	0.2	0.0
Musambira	7,914	100	83.9	9.4	0.0	5.8	0.4	0.3	0.2
Ngamba	3,242	100	93.2	3.5	0.0	2.8	0.1	0.1	0.2
Nyamiyaga	9,293	100	76.9	17.5	0.1	4.4	0.4	0.6	0.2
Nyarubaka	6,015	100	88.1	6.5	0.1	4.6	0.2	0.4	0.1
Rugarika	8,510	100	74.6	16.7	0.1	7.6	0.8	0.2	0.1
Rukoma	7,888	100	88.0	7.0	0.0	4.4	0.3	0.1	0.1
Runda	8,272	100	69.3	21.9	0.1	6.6	1.8	0.2	0.2

Source: Rwanda 4<sup>th</sup> Population and Housing Census, 2012 (NISR)

- In Kamonyi district, 81.2% of housing units are occupied by their owner and only 12.3% by tenants.
- At sector level, the percentage of owners of households units is higher in Ngamba (93.2%), Kayenzi (91.4%) and Kayumbu sectors (90.4%).

**Figure 8:** Distribution (%) of private households of Kamonyi district by tenure of the housing and area of residence



Source: Rwanda 4<sup>th</sup> Population and Housing Census, 2012 (NISR)

The tenure of housing units varies substantially according to the area of residence.

- The percentage of owners of housing units is 65.2% in urban areas against 83.3% in rural areas,
- The percentage of tenants of housing units is 27% in urban areas where it is 10.4% in rural areas,



### 4.2.3. Material of the housing units

#### 4.2.3.1. Main materials of the roof

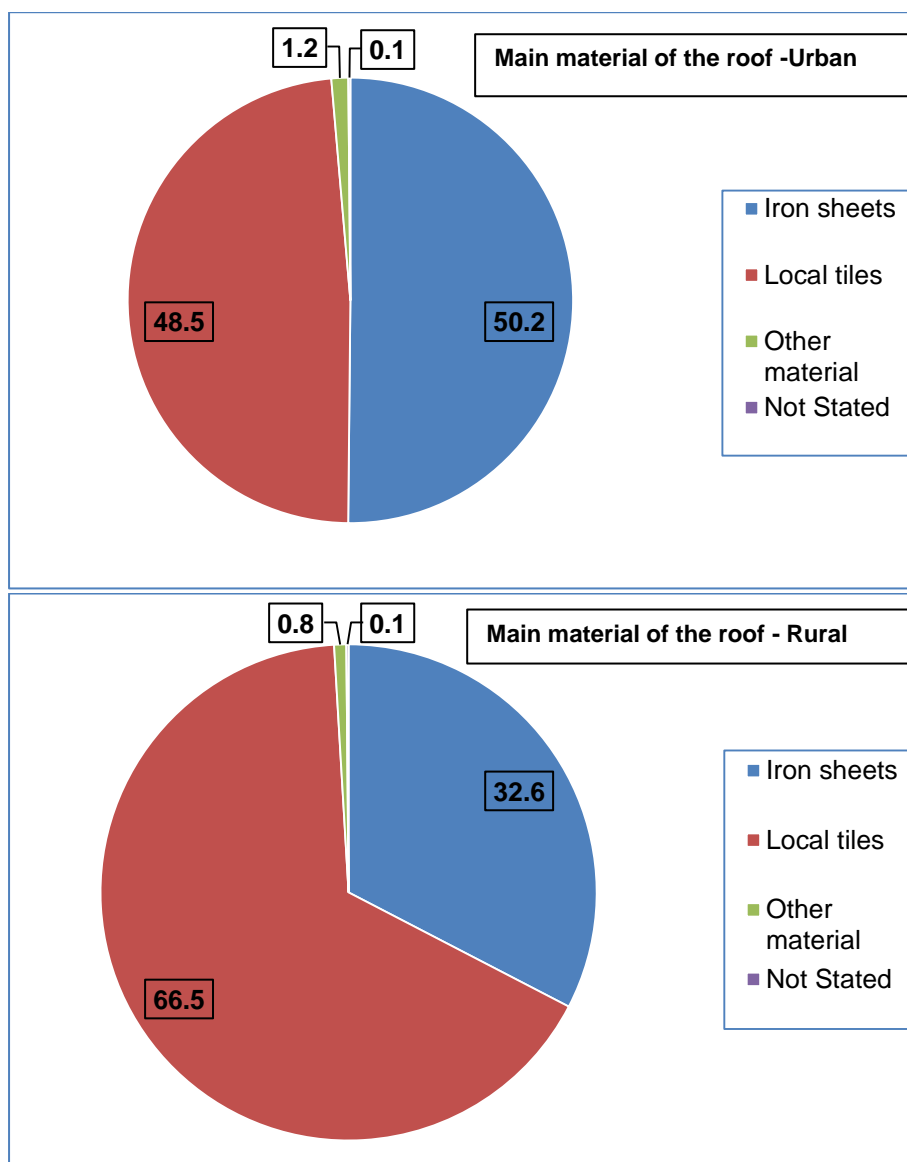
Table 33: Distribution (count and %) of private households of Kamonyi district by main material of the roof of the housing units and by Sector

Sectors	Total number of private households	Total (%)	Iron sheets	Local tiles	Other material	Not Stated
Rwanda	2,424,898	100	59.5	39.3	0.9	0.1
Southern Province	603,800	100	19.8	79.0	1.0	0.1
Kamonyi district	80,468	100	34.7	64.3	0.8	0.1
Gacurabwenge	6,470	100	34.5	64.3	1.0	0.2
Karama	4,367	100	24.3	74.9	0.7	0.1
Kayenzi	5,346	100	42.3	57.3	0.3	0.1
Kayumbu	3,787	100	4.6	94.7	0.6	0.2
Mugina	9,364	100	12.7	86.2	0.9	0.1
Musambira	7,914	100	7.8	90.9	1.1	0.2
Ngamba	3,242	100	76.6	22.9	0.4	0.1
Nyamiyaga	9,293	100	7.5	91.5	0.8	0.2
Nyarubaka	6,015	100	2.7	96.3	0.8	0.2
Rugarika	8,510	100	37.1	61.8	1.0	0.1
Rukoma	7,888	100	88.3	10.9	0.7	0.1
Runda	8,272	100	83.3	15.4	1.2	0.1

Source: Rwanda 4<sup>th</sup> Population and Housing Census, 2012 (NISR)

- In Kamonyi district, housing units are mainly covered by local tiles (64.3%) and iron sheets (34.7%).
- The percentage of housing units using local tiles varies substantially between 10% and 96% in all sectors of Kamonyi district. The highest percentage of housing units covered by local tiles is found in Nyarubaka (96.3%) and Kayumbu (94.7%), and the lowest in Rukoma (10.9%).
- The highest percentages of the housing units covered by iron sheets are in Rukoma (88.3%) and Runda (83.3%).

**Figure 9:** Distribution (%) of private households of Kamonyi district by main material of the roof and by area of residence



Source: Rwanda 4<sup>th</sup> Population and Housing Census, 2012 (NISR)

Materials used for roofing of the households units vary according to the area of residence.

- The materials used for roofing are iron sheets (50.2%) and local tiles (48.5%) in urban areas of Kamonyi district.
- In rural areas, the predominant roofing materials are local tiles (66.5%) and iron sheets (32.6%).

## 4.2.3.2. Main materials of the walls

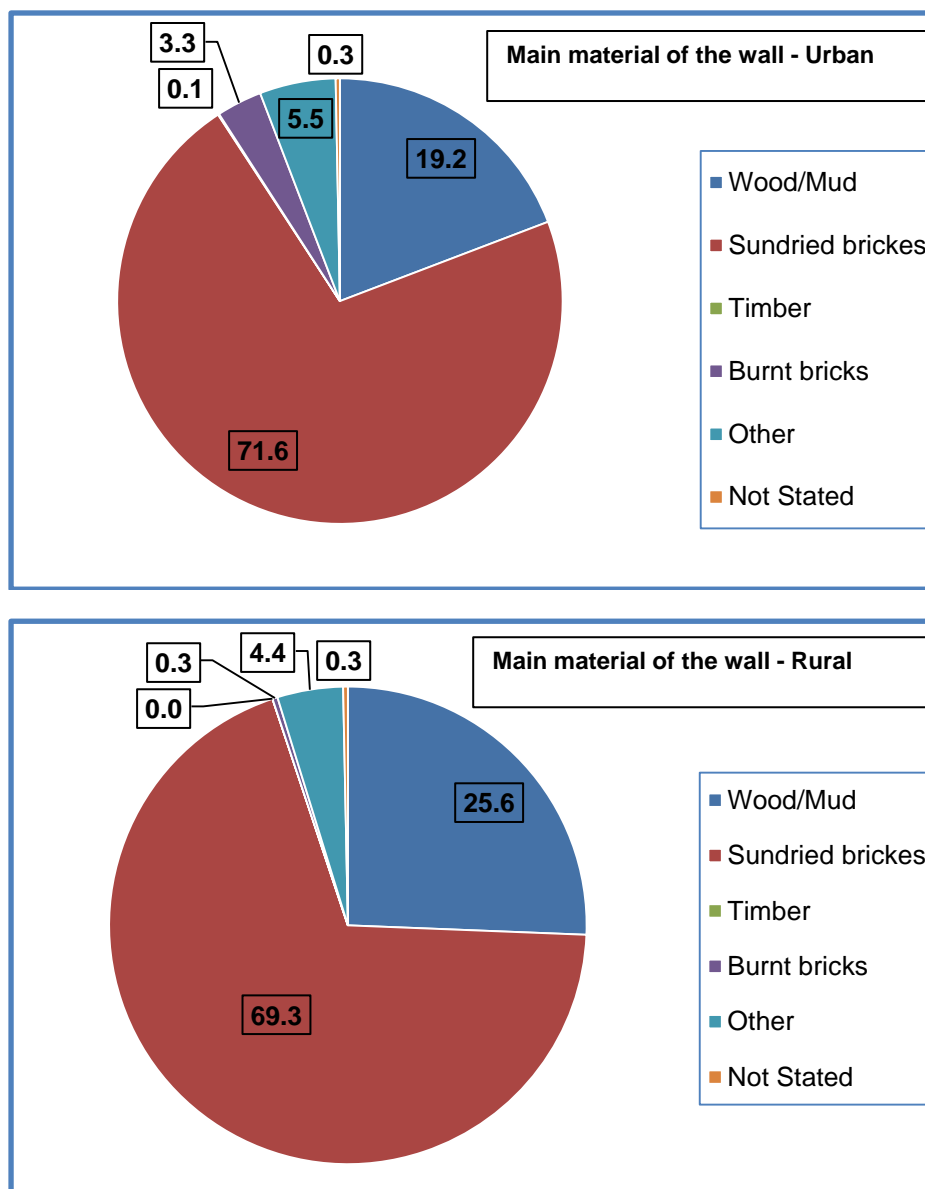
Table 34: Distribution (count and %) of private households of Kamonyi district by main material of the walls and by Sector

Sectors	Total number of private households	Total	Wood /Mud	Sundried bricks	Timber	Burnt bricks	Other
Rwanda	2,424,898	100	35.6	55.3	0.8	2.6	5.4
Southern Province	603,800	100	45.8	47.3	0.0	2.2	4.4
Kamonyi district	80,468	100	24.9	69.5	0.0	0.7	4.6
Gacurabwenge	6,470	100	21.8	73.9	0.0	0.8	3.2
Karama	4,367	100	20.4	72.6	0.0	0.1	6.6
Kayenzi	5,346	100	27.9	65.6	0.0	0.7	5.5
Kayumbu	3,787	100	15.1	82.2	0.0	1.4	1.0
Mugina	9,364	100	21.6	75.1	0.0	0.2	2.9
Musambira	7,914	100	20.9	77.0	0.0	0.2	1.7
Ngamba	3,242	100	41.8	45.1	0.0	0.3	12.7
Nyamiyaga	9,293	100	14.1	82.3	0.0	0.1	3.1
Nyarubaka	6,015	100	13.1	84.2	0.0	0.1	2.1
Rugarika	8,510	100	27.3	68.2	0.0	0.3	3.8
Rukoma	7,888	100	48.5	40.3	0.0	0.7	10.2
Runda	8,272	100	28.6	61.6	0.1	3.4	6.0

Source: Rwanda 4<sup>th</sup> Population and Housing Census, 2012 (NISR)

- In Kamonyi district, walls of the housing units are mostly built with sundried bricks (69.5%), wood/mud (24.9%). Burnt bricks represent 0.7%.
- At the sector level, sundried bricks stand far as the most used material for walls in Nyarubaka (84.2%), Nyamiyaga (82.3%) and Kayumbu (82.2%)

**Figure 10:** Distribution (%) of private households of Kamonyi district by main material of the walls and by area of residence



Source: Rwanda 4<sup>th</sup> Population and Housing Census, 2012 (NISR)

Materials used for walls of the housing units vary according to the area of residence.

- In urban areas, the predominant material are sundried bricks (71.6%) followed by wood/mud (19.2%).
- In rural areas, sundried bricks predominate (69.3%) followed by wood/mud (25.6%).

#### 4.2.4. Source of energy for private households

##### 4.2.4.1. Main source of energy for lighting

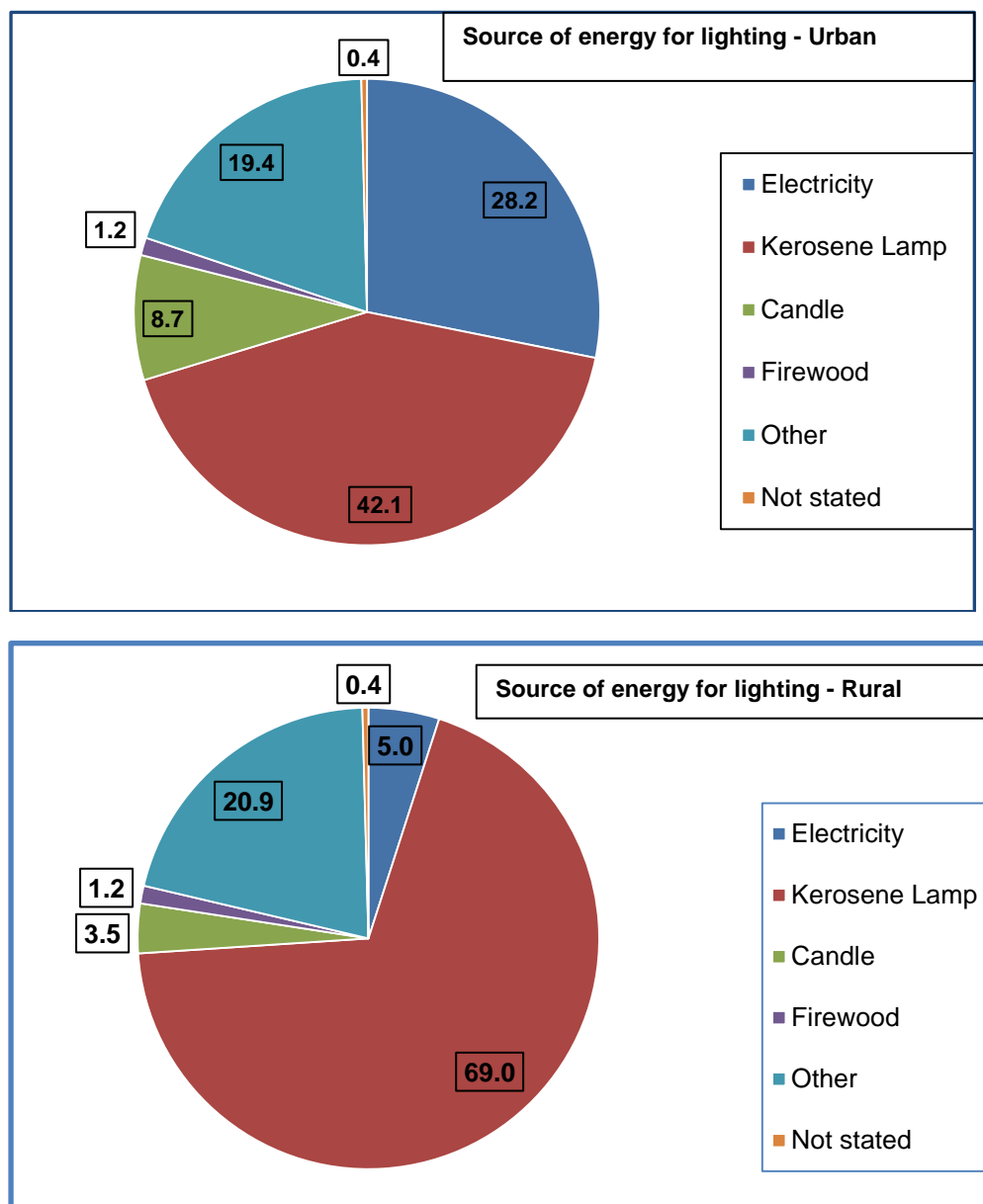
Table 35: Distribution (count and %) for private households of Kamonyi district by main source of energy for lighting and by Sector

Sectors	Total number of private households	Total (%)	Electricity	Kerosene lamp	Candle	Firewood	Other	Not stated
<b>Rwanda</b>	<b>2 424 898</b>	<b>100</b>	<b>17,4</b>	<b>39,6</b>	<b>9,7</b>	<b>7,9</b>	<b>24,9</b>	<b>0,5</b>
<b>Southern Province</b>	<b>603 800</b>	<b>100</b>	<b>8,0</b>	<b>47,4</b>	<b>6,0</b>	<b>10,5</b>	<b>27,8</b>	<b>0,4</b>
<b>Kamonyi district</b>	<b>80 468</b>	<b>100</b>	<b>7,7</b>	<b>65,8</b>	<b>4,1</b>	<b>1,2</b>	<b>20,7</b>	<b>0,4</b>
Gacurabwenge	6 470	100	15,9	63,8	4,3	0,8	14,9	0,4
Karama	4 367	100	4,4	89,0	0,8	0,6	4,9	0,4
Kayenzi	5 346	100	5,5	87,4	1,4	0,4	4,8	0,4
Kayumbu	3 787	100	1,7	82,9	1,6	0,7	12,4	0,7
Mugina	9 364	100	5,6	38,6	5,8	2,4	47,3	0,3
Musambira	7 914	100	8,9	53,4	5,0	2,6	29,7	0,4
Ngamba	3 242	100	0,8	90,6	1,9	0,2	5,7	0,8
Nyamiyaga	9 293	100	3,0	52,4	3,6	2,2	38,5	0,4
Nyarubaka	6 015	100	2,8	57,1	2,3	1,7	35,7	0,4
Rugarika	8 510	100	7,1	71,5	4,2	0,9	16,0	0,3
Rukoma	7 888	100	3,3	90,5	1,8	0,4	3,5	0,5
Runda	8 272	100	24,7	58,6	10,5	0,2	5,6	0,4

Source: Rwanda 4<sup>th</sup> Population and Housing Census, 2012 (NISR)

- In Kamonyi district, the main sources of energy for lighting used by the households are kerosene lamp (65.8%), electricity (7.7%), others (20.7%), candle (4.1%) and firewood (1.2%).
- At sector level, percentage of household using electricity for lighting is high in Runda sector (24.7%) and low in Ngamba (0.8%).
- The percentage of private households using kerosene lamp for lighting predominate in all sectors.
- sectors with high percentage of private households using other for lighting are Mugina (47.3%), Nyamiyaga (38.5%) and Nyarubaka (35.7%).

**Figure 11:** Distribution (%) of private households of Kamonyi district by main source of energy for lighting and by area of residence



Source: Rwanda 4<sup>th</sup> Population and Housing Census, 2012 (NISR)

The sources of energy for lighting vary by area of residence.

- In urban areas, the three main sources of energy for lighting are kerosene lamp (42.1%), electricity (28.2%) and other (19.4%).
- In rural areas, most of the private households use kerosene lamp (69%) and 5% use electricity.

#### 4.2.4.2. Main source of energy for cooking

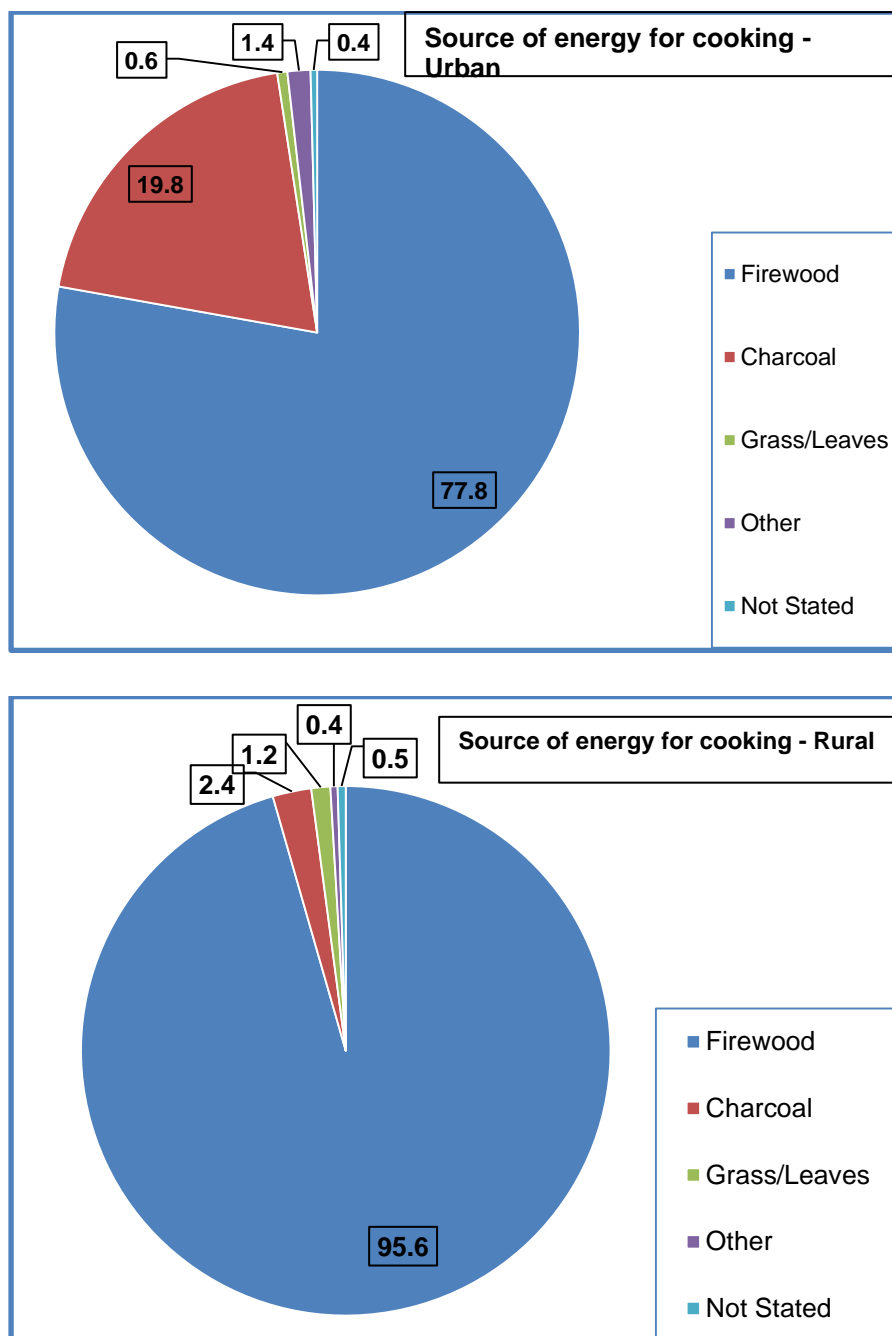
Table 36: Distribution (count and %) of private households of Kamonyi district by main source of energy for cooking and by Sector

Sectors	Total number of private households	Total	Firewood	Charcoal	Grass/Leaves	Other	Not Stated
Rwanda	2 424 898	100	82.2	13.2	2.7	1.2	0.7
Southern Province	603 800	100	92.0	4.7	1.9	0.8	0.5
Kamonyi District	80 468	100	93.5	4.4	1.1	0.6	0.5
Gacurabwenge	6 470	100	92.4	5.5	0.8	0.9	0.4
Karama	4 367	100	97.5	1.3	0.6	0.2	0.4
Kayenzi	5 346	100	98.2	0.9	0.2	0.2	0.4
Kayumbu	3 787	100	97.5	1.0	0.6	0.3	0.6
Mugina	9 364	100	95.1	3.0	1.2	0.4	0.3
Musambira	7 914	100	94.8	2.8	1.5	0.5	0.5
Ngamba	3 242	100	95.8	0.6	2.4	0.3	0.9
Nyamiyaga	9 293	100	97.0	1.3	0.7	0.4	0.5
Nyarubaka	6 015	100	95.7	0.8	2.7	0.3	0.5
Rugarika	8 510	100	93.4	5.5	0.1	0.5	0.5
Rukoma	7 888	100	94.3	1.9	2.6	0.7	0.6
Runda	8 272	100	76.9	21.0	0.4	1.4	0.4

Source: Rwanda 4<sup>th</sup> Population and Housing Census, 2012 (NISR)

- At district level, firewood is used as the main sources of energy for cooking in private households (93.5%), charcoal (4.4%) and grass/leaves (1.1%).
- At sector level, firewood is the most used source of cooking energy by private households (between 76% and 98%).
- Sector with high percentage of private households using charcoal as main source of cooking energy is Runda (21%).

Figure 12: Distribution (%) of private households of Kamonyi district by main source of energy for cooking and by area of residence



Source: Rwanda 4<sup>th</sup> Population and Housing Census, 2012 (NISR)

The main sources of energy for cooking used by private households vary by area of residence.

- In urban areas, private households use more firewood (77%) and charcoal (19.8%) and
- In rural areas, private households use mainly firewood (95.6%).



#### 4.2.5. Water and sanitation of private households

##### 4.2.5.1. Main source of water

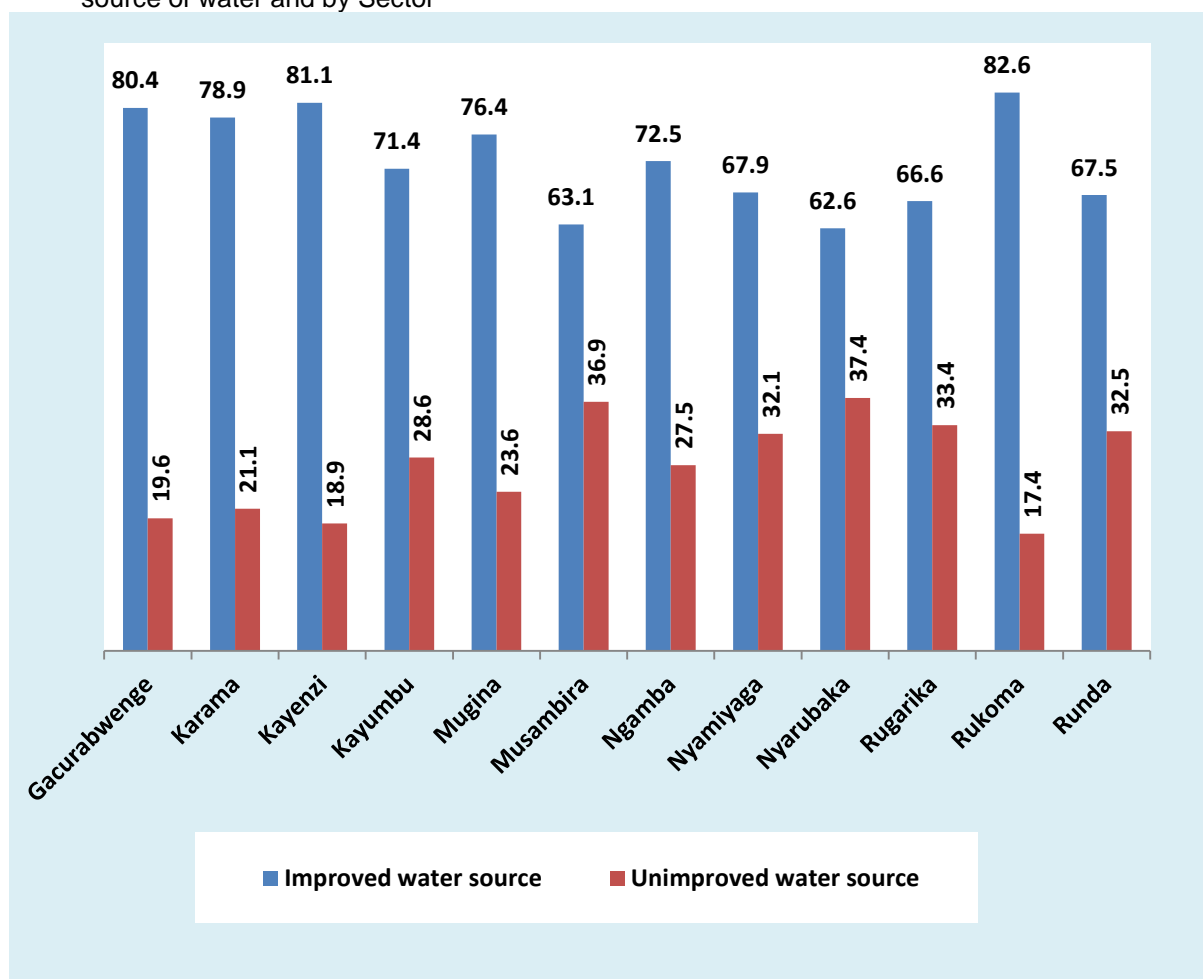
Table 37: Distribution (count and %) of private households of Kamonyi district by main source of water and by Sector

Sectors	Total number of private households	Total	Improved source of water	Unimproved source of water	Not Stated
Rwanda	2 424 898	100	72,3	26,7	1,1
Southern Province	603 800	100	75,5	23,5	0,9
Kamonyi district	80 468	100	72,1	26,8	1,1
Gacurabwenge	6 470	100	80,4	18,7	1,0
Karama	4 367	100	78,9	20,3	0,8
Kayenzi	5 346	100	81,1	17,7	1,1
Kayumbu	3 787	100	71,4	27,2	1,4
Mugina	9 364	100	76,4	22,6	0,9
Musambira	7 914	100	63,1	35,5	1,4
Ngamba	3 242	100	72,5	25,4	2,1
Nyamiyaga	9 293	100	67,9	31,3	0,8
Nyarubaka	6 015	100	62,6	36,6	0,8
Rugarika	8 510	100	66,6	32,5	0,9
Rukoma	7 888	100	82,6	16,3	1,1
Runda	8 272	100	67,5	31,3	1,2

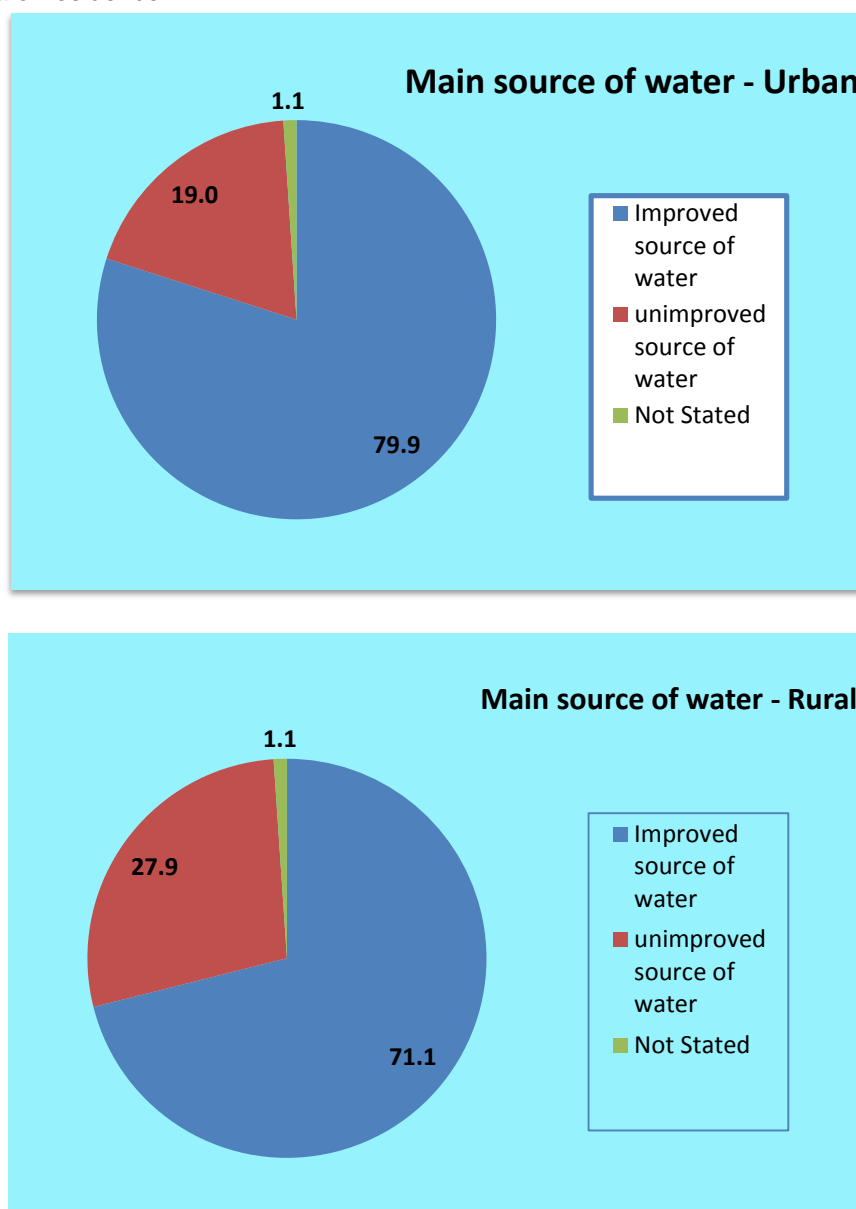
Source: Rwanda 4<sup>th</sup> Population and Housing Census, 2012 (NISR)

- In Kamonyi district, 72.1% of private households use improved sources of water.
- At sector level, the percentage of private households using improved source of water varies between 62.6% in Nyamiyaga to 82.6% in Rukoma sector.

**Figure 13:** Distribution (%) of private households of Kamonyi district by improved and unimproved source of water and by Sector



**Figure 14:** Distribution (%) of private households of Kamonyi district by main source of water and by area of residence



Source: Rwanda 4<sup>th</sup> Population and Housing Census, 2012 (NISR)

The main source of water used by the private households varies according to the area of residence.

- In urban areas, 79.9% of households use improved source of water while 71.1% of households use improved source of water.

#### 4.2.5.2. Main type of toilet facility

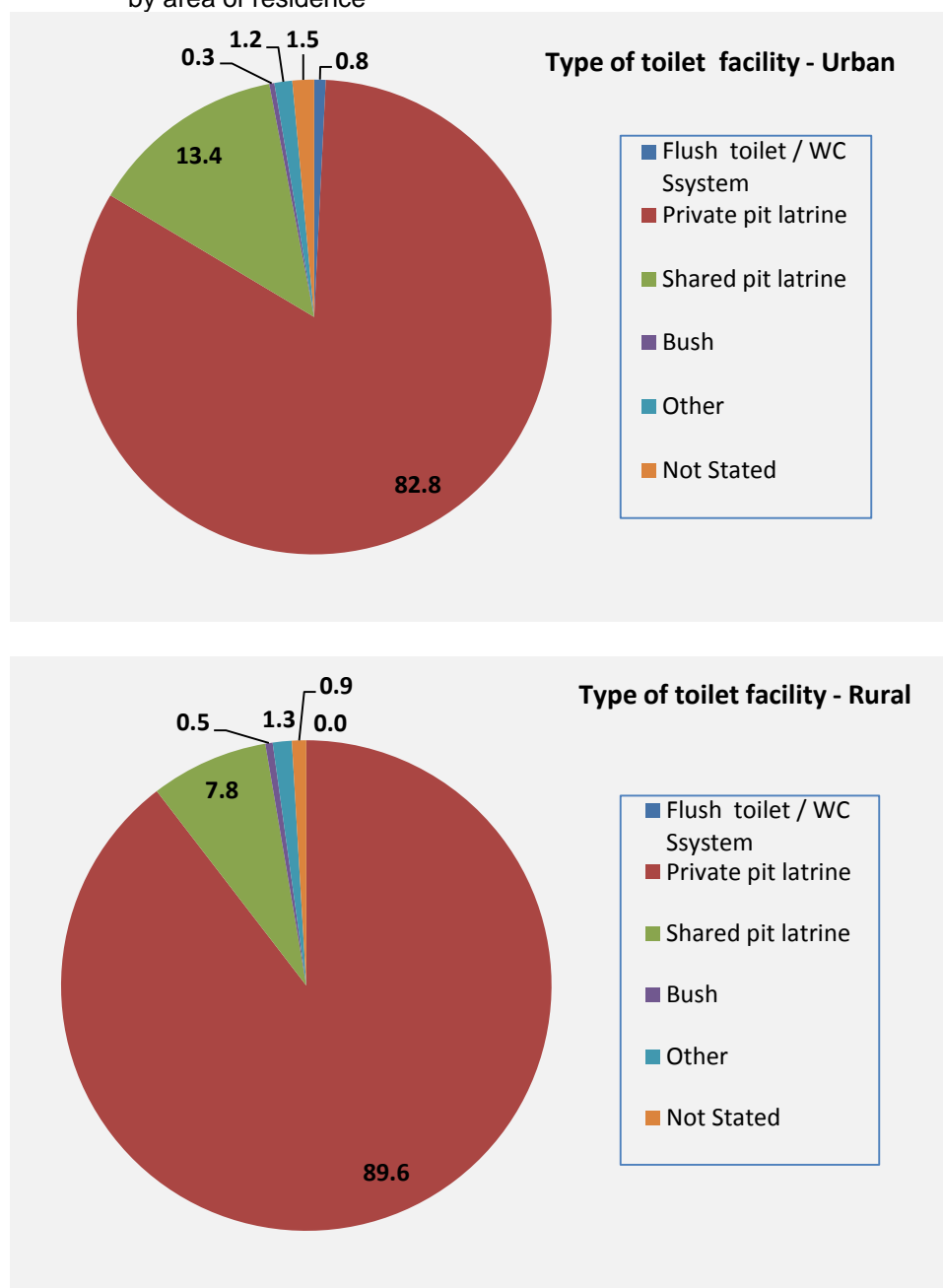
Table 38: Distribution (count and %) of private households in Kamonyi district by main type of toilet facility and by Sector

Sectors	Main source of water							
	Total number of private households	Total	Flush toilet / WC System	Private pit latrine	Shared pit latrine	Bush	Other	Not Stated
<b>Rwanda</b>	<b>2 424 898</b>	<b>100</b>	<b>0.8</b>	<b>82.4</b>	<b>12.4</b>	<b>0.9</b>	<b>1.7</b>	<b>1.7</b>
<b>Southern Province</b>	<b>603 800</b>	<b>100</b>	<b>0.4</b>	<b>85.3</b>	<b>10.1</b>	<b>1.0</b>	<b>2.0</b>	<b>1.3</b>
<b>Kamonyi district</b>	<b>80 468</b>	<b>100</b>	<b>0.1</b>	<b>88.8</b>	<b>8.4</b>	<b>0.5</b>	<b>1.2</b>	<b>1.0</b>
Gacurabwenge	6 470	100	0.0	88.4	9.1	0.3	1.1	1.1
Karama	4 367	100	0.0	93.8	4.4	0.4	0.6	0.8
Kayenzi	5 346	100	0.0	90.7	7.4	0.4	0.8	0.7
Kayumbu	3 787	100	0.0	93.0	3.5	0.4	1.2	2.0
Mugina	9 364	100	0.0	86.6	10.4	0.6	1.9	0.6
Musambira	7 914	100	0.0	86.5	9.6	0.7	2.0	1.2
Ngamba	3 242	100	0.0	94.0	2.8	0.8	1.0	1.3
Nyamiyaga	9 293	100	0.0	86.3	11.1	0.5	1.3	0.8
Nyarubaka	6 015	100	0.0	88.5	9.5	0.5	0.7	0.8
Rugarika	8 510	100	0.0	87.9	9.8	0.7	0.9	0.7
Rukoma	7 888	100	0.1	92.2	4.9	0.2	1.3	1.3
Runda	8 272	100	0.8	86.1	10.1	0.2	1.4	1.4

Source: Rwanda 4<sup>th</sup> Population and Housing Census, 2012 (NISR)

- At district level, the main types of toilet facility used by the private households are private pit latrine (88.8%) and shared pit latrine (8.4%). Only 0.1% of the private households of the district are equipped with flush toilet/WC system.
- At sector level, the percentage of households using private pit latrines is high. It varies between 86% and 94%.
- Nyamiyaga sector has high percentage of private households using shared pit latrines (11.1%).

**Figure 15:** Distribution (%) of private households of Kamonyi district by main type of toilet facility and by area of residence



Source: Rwanda 4<sup>th</sup> Population and Housing Census, 2012 (NISR)

The type of toilet facility used in the private households varies according to the area of residence.

- In urban areas, the most used types of toilet are private pit latrine (69.5%) and shared pit latrine (24.3%).
- In rural areas, the main type of toilet used is the private pit latrine (90.7%) followed by shared pit latrine (6.9%).

### 4.2.5.3. Mode of waste disposal

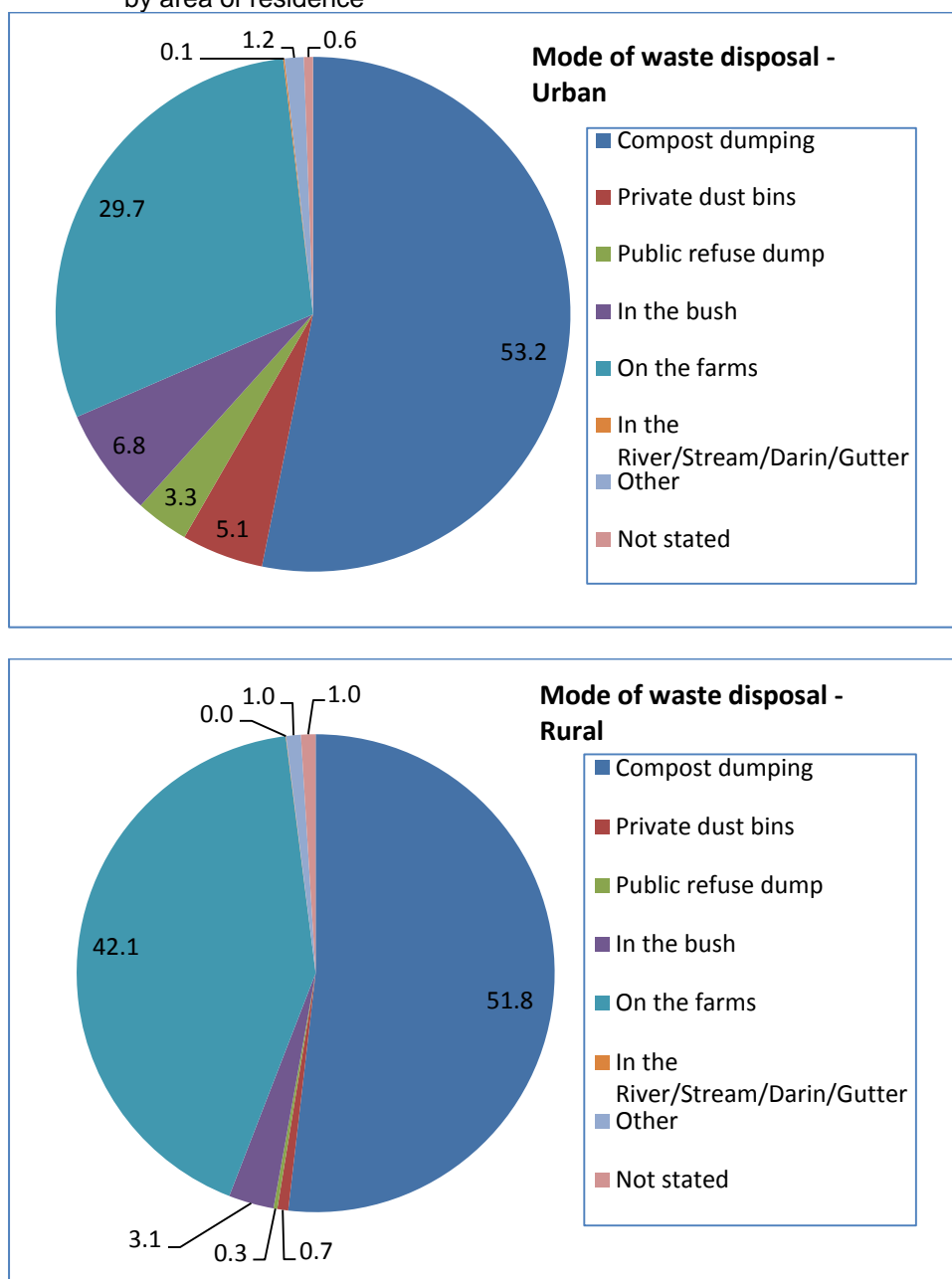
Table 39: Distribution (count and %) of private households in Kamonyi district by mode of waste disposal and by Sector

Sectors	Mode of waste disposal								
	Total number of private households	Total	Compost dumping	Private dust bins	Public refuse dump	In the bush	On the farms	In the River/ Stream/ Darin/Gutter	Not stated
<b>Rwanda</b>	<b>2 424 898</b>	<b>100</b>	<b>57.2</b>	<b>8.7</b>	<b>1.2</b>	<b>6.9</b>	<b>23.7</b>	<b>0.1</b>	<b>1.3</b>
<b>Southern Province</b>	<b>603 800</b>	<b>100</b>	<b>57.9</b>	<b>2.3</b>	<b>0.6</b>	<b>3.5</b>	<b>33.3</b>	<b>0.0</b>	<b>1.3</b>
<b>Kamonyi district</b>	<b>80 468</b>	<b>100</b>	<b>52.0</b>	<b>1.3</b>	<b>0.6</b>	<b>3.5</b>	<b>40.6</b>	<b>0.0</b>	<b>0.9</b>
Gacurabwenge	6 470	100	57.9	1.3	0.5	4.6	34.0	0.0	1.0
Karama	4 367	100	47.9	0.9	0.1	1.6	48.5	0.0	0.8
Kayenzi	5 346	100	48.2	0.2	0.1	0.7	49.1	0.0	1.0
Kayumbu	3 787	100	39.4	0.3	0.2	1.0	56.6	0.0	1.6
Mugina	9 364	100	48.6	0.7	0.8	6.0	42.1	0.1	0.6
Musambira	7 914	100	48.9	0.9	0.3	3.1	45.4	0.0	0.9
Ngamba	3 242	100	54.5	0.2	0.2	3.2	36.2	0.0	1.6
Nyamiyaga	9 293	100	57.3	0.4	0.2	4.4	35.1	0.0	1.1
Nyarubaka	6 015	100	47.2	0.4	0.3	3.0	47.1	0.0	1.1
Rugarika	8 510	100	49.2	1.6	0.2	5.0	42.8	0.0	0.6
Rukoma	7 888	100	63.7	1.4	0.2	1.7	31.4	0.1	1.1
Runda	8 272	100	52.8	5.1	3.3	3.8	32.5	0.1	0.6

Source: Rwanda 4<sup>th</sup> Population and Housing Census, 2012 (NISR)

- In Kamonyi district, the main modes of waste disposal used by private households are the compost dumping (52%), the farms (40.6%), the bush (3.5%), and the private dust bins (1.3%).
- Sectors with high percentages of households using compost dumping are Rukoma (63.7%), Gacurabwenge (57.9%) and Nyamiyaga (57.3%).
- Sectors with the highest proportions of households disposing their waste on the farms are Kayumbu (56.6%), Kayenzi (49.1%) and Karama (48.5%).
- Sectors with highest proportions of private households that discharge domestic waste in the bush are Mugina (6%) and Rugarika (5 %).

**Figure 16:** Distribution (%) of private households in Kamonyi district by mode of waste disposal and by area of residence



Source: Rwanda 4<sup>th</sup> Population and Housing Census, 2012 (NISR)

The main modes of waste disposal used by the households vary by area of residence.

- Urban households evacuate their waste mainly in the compost dumping (53.2%), on the farm (29.7%) and in the bush (6.8%).
- In rural areas, the households evacuate their waste mainly and in compost dumping (51.8%) and on the farms (42.1%).

## 4.2.6. Assets of the private households

### 4.2.6.1. Communication assets

Table 40: Percentage of private households of Kamonyi district possessing communication assets by Sector

Sectors	Total number of private households	Radio	TV	Telephone (landline)	Mobile phone	Computer
Rwanda	2 424 898	64.0	7.8	0.5	54.1	2.4
Southern Province	603 800	62.03	3.4	0.3	45.2	1.1
Kamonyi district	80 468	66.8	3.5	0.3	57.3	0.8
Gacurabwenge	6 470	65.8	5.5	0.2	63.2	1.2
Karama	4 367	67.7	1.6	0.2	57.3	0.2
Kayenzi	5 346	71.3	2.3	0.3	61.2	0.5
Kayumbu	3 787	70.7	1.1	0.2	57.8	0.3
Mugina	9 364	61.3	2.3	0.1	49.3	0.4
Musambira	7 914	63.9	3.3	0.2	55.4	0.6
Ngamba	3 242	72.8	0.8	0.1	53.1	0.2
Nyamiyaga	9 293	61.8	1.1	0.1	51.7	0.1
Nyarubaka	6 015	66.7	1.2	1.1	49.4	0.1
Rugarika	8 510	67.3	3.3	0.4	61.2	0.6
Rukoma	7 888	71.6	2.6	0.2	58.2	0.7
Runda	8 272	70.0	12.8	0.3	70.0	3.3

Source: Rwanda 4<sup>th</sup> Population and Housing Census, 2012 (NISR)

- At the district level, 66.8% of private households possess a radio, 57.3% have a mobile phone, 3.5% a TV and 0.8% own a computer.
- Above 60 percent of private households in Kamonyi district possess a radio with Ngamba (72.8%) leading the trend.
- 70% of households Runda sector possess a Mobile phone and only 49.3% of households sectors of and less common in Mugina
- 12.8% of households in Runda sector possess TV.



#### 4.2.6.2. Access to the Internet

Table 41: Percentages of private households of Kamonyi district that have access to the Internet by place of access

Sectors	Total number of private households	Home	Office/School	Cyber-café	Other
<b>Rwanda</b>	<b>2 424 898</b>	<b>42.3</b>	<b>52.7</b>	<b>57.6</b>	<b>17.7</b>
<b>Southern Province</b>	<b>603 800</b>	<b>32.7</b>	<b>53.0</b>	<b>61.5</b>	<b>19.7</b>
<b>Kamonyi District</b>	<b>80 468</b>	<b>26.9</b>	<b>49.2</b>	<b>59.2</b>	<b>19.7</b>
Gacurabwenge	6 470	23.0	48.2	72.1	16.8
Karama	4 367	14.9	60.4	58.4	23.8
Kayenzi	5 346	11.7	63.5	57.7	9.5
Kayumbu	3 787	29.2	50.8	56.9	41.5
Mugina	9 364	21.5	42.4	61.8	22.9
Musambira	7 914	40.8	56.3	59.2	10.2
Ngamba	3 242	24.1	42.2	53.0	19.3
Nyamiyaga	9 293	28.3	49.6	55.9	14.2
Nyarubaka	6 015	27.3	39.1	52.7	21.8
Rugarika	8 510	17.3	41.3	70.9	13.0
Rukoma	7 888	28.1	56.2	47.5	22.0
Runda	8 272	32.4	46.1	56.7	25.0

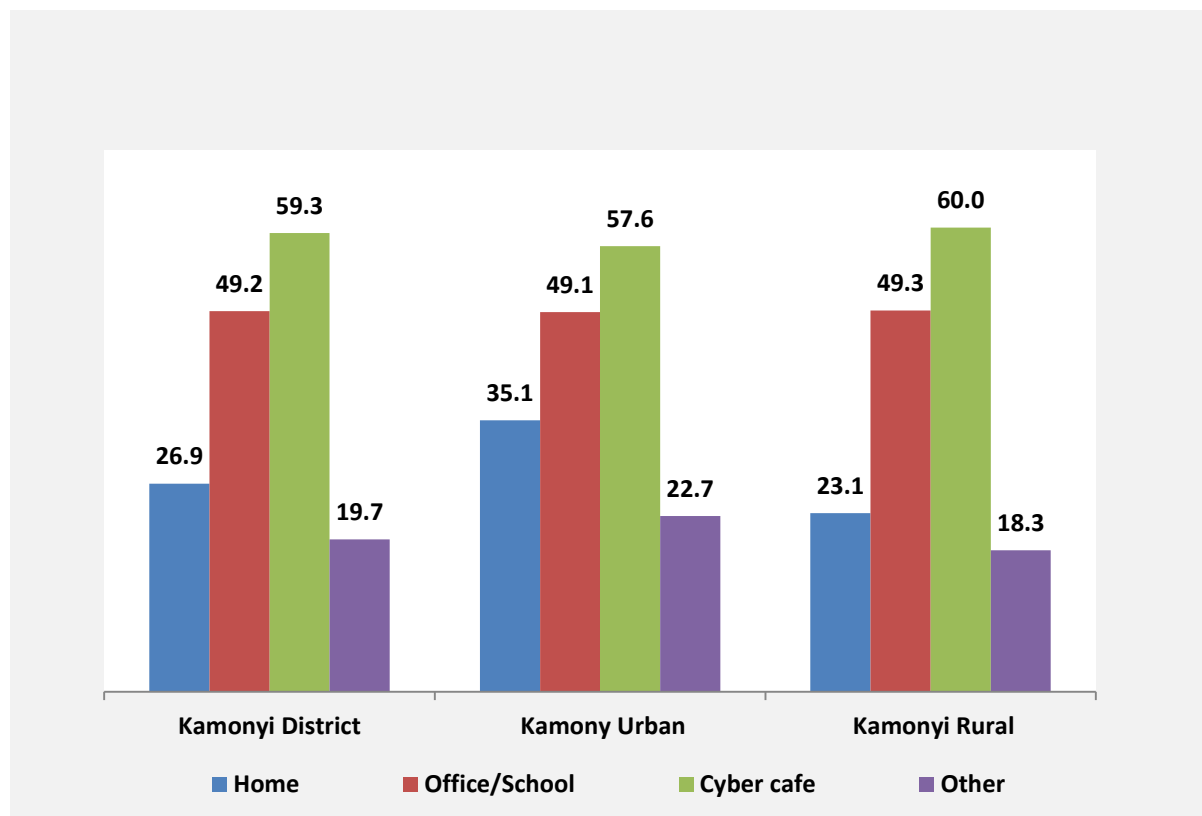
Source: Rwanda 4<sup>th</sup> Population and Housing Census, 2012 (NISR)

- At district level, private households mainly access internet at cyber-cafes (59.2%), at office or school (49.2%) and at home (26.9%).

At the sector level,

- Sectors with the high percentage of private households with access to internet through Cyber-café are Gacurabwenge (72.1%), Rugarika (70.9%) and Mugina (61.8%).
- Sectors with the high percentage of private households with access to internet at home are Musambira (40.8%), Runda (32.4%) and Kayumbu (29.2%).
- Sectors with the high percentage of private households with access to internet from office/school are Kayenzi (63.5%), Karama (60.4%) and Musambira (56.3%).

**Figure 17:** Percentage of private households who's at least one member have access to the Internet by place of access



Source: Rwanda 4<sup>th</sup> Population and Housing Census, 2012 (NISR)

Access to the Internet varies greatly depending on the area of residence.

- In urban areas, private households access the Internet mainly in cybercafé (57.6%),
- In rural areas, private households access Internet mainly in cybercafé (60.0%), office or at school (49.3%).

## ANNEXES

Table 42: Distribution (count and %) of the resident population of Kamonyi district by Single age and Sex

Age	Count			%		
	Both sexes	Male	Female	Both sexes	Male	Female
<b>Total</b>	<b>340,501</b>	<b>162,189</b>	<b>178,312</b>	<b>100</b>	<b>100</b>	<b>100</b>
0	9,137	4,633	4,504	2.7	2.9	2.5
1	9,161	4,622	4,539	2.7	2.8	2.5
2	8,714	4,382	4,332	2.6	2.7	2.4
3	10,069	4,983	5,086	3.0	3.1	2.9
4	10,920	5,424	5,496	3.2	3.3	3.1
5	9,720	4,801	4,919	2.9	3.0	2.8
6	10,500	5,175	5,325	3.1	3.2	3.0
7	9,943	4,999	4,944	2.9	3.1	2.8
8	9,129	4,561	4,568	2.7	2.8	2.6
9	8,863	4,425	4,438	2.6	2.7	2.5
10	9,822	4,935	4,887	2.9	3.0	2.7
11	7,014	3,462	3,552	2.1	2.1	2.0
12	9,525	4,745	4,780	2.8	2.9	2.7
13	6,800	3,449	3,351	2.0	2.1	1.9
14	6,604	3,241	3,363	1.9	2.0	1.9
15	7,491	3,769	3,722	2.2	2.3	2.1
16	8,420	4,191	4,229	2.5	2.6	2.4
17	6,852	3,525	3,327	2.0	2.2	1.9
18	6,909	3,423	3,486	2.0	2.1	2.0
19	5,584	2,798	2,786	1.6	1.7	1.6
20	6,123	2,912	3,211	1.8	1.8	1.8
21	5,306	2,557	2,749	1.6	1.6	1.5
22	5,741	2,766	2,975	1.7	1.7	1.7
23	5,144	2,425	2,719	1.5	1.5	1.5
24	5,912	2,800	3,112	1.7	1.7	1.7
25	5,710	2,789	2,921	1.7	1.7	1.6
26	5,434	2,604	2,830	1.6	1.6	1.6
27	5,869	2,819	3,050	1.7	1.7	1.7
28	5,602	2,719	2,883	1.6	1.7	1.6
29	5,380	2,553	2,827	1.6	1.6	1.6
30	6,742	3,232	3,510	2.0	2.0	2.0
31	5,258	2,567	2,691	1.5	1.6	1.5
32	5,306	2,650	2,656	1.6	1.6	1.5
33	4,538	2,184	2,354	1.3	1.3	1.3
34	4,360	1,942	2,418	1.3	1.2	1.4
35	4,181	1,900	2,281	1.2	1.2	1.3
36	3,549	1,613	1,936	1.0	1.0	1.1
37	3,504	1,594	1,910	1.0	1.0	1.1

Age	Count			%		
	Both sexes	Male	Female	Both sexes	Male	Female
38	3,320	1,447	1,873	1.0	0.9	1.1
39	3,388	1,493	1,895	1.0	0.9	1.1
40	3,640	1,572	2,068	1.1	1.0	1.2
41	2,973	1,345	1,628	0.9	0.8	0.9
42	3,304	1,483	1,821	1.0	0.9	1.0
43	2,850	1,183	1,667	0.8	0.7	0.9
44	2,977	1,325	1,652	0.9	0.8	0.9
45	2,711	1,184	1,527	0.8	0.7	0.9
46	2,662	1,149	1,513	0.8	0.7	0.8
47	2,477	1,097	1,380	0.7	0.7	0.8
48	2,656	1,134	1,522	0.8	0.7	0.9
49	2,917	1,266	1,651	0.9	0.8	0.9
50	2,905	1,284	1,621	0.9	0.8	0.9
51	2,144	988	1,156	0.6	0.6	0.6
52	2,507	1,111	1,396	0.7	0.7	0.8
53	2,738	1,177	1,561	0.8	0.7	0.9
54	2,236	970	1,266	0.7	0.6	0.7
55	2,204	968	1,236	0.6	0.6	0.7
56	1,958	832	1,126	0.6	0.5	0.6
57	1,701	758	943	0.5	0.5	0.5
58	1,579	660	919	0.5	0.4	0.5
59	1,320	543	777	0.4	0.3	0.4
60	1,805	729	1,076	0.5	0.4	0.6
61	926	387	539	0.3	0.2	0.3
62	1,263	554	709	0.4	0.3	0.4
63	981	358	623	0.3	0.2	0.3
64	1,007	395	612	0.3	0.2	0.3
65	841	348	493	0.2	0.2	0.3
66	742	301	441	0.2	0.2	0.2
67	967	324	643	0.3	0.2	0.4
68	645	190	455	0.2	0.1	0.3
69	502	168	334	0.1	0.1	0.2
70	1,093	370	723	0.3	0.2	0.4
71	529	206	323	0.2	0.1	0.2
72	873	280	593	0.3	0.2	0.3
73	564	181	383	0.2	0.1	0.2
74	505	182	323	0.1	0.1	0.2
75	587	223	364	0.2	0.1	0.2
76	585	195	390	0.2	0.1	0.2
77	501	186	315	0.1	0.1	0.2
78	326	147	179	0.1	0.1	0.1
79	328	147	181	0.1	0.1	0.1

Age	Count			%		
	Both sexes	Male	Female	Both sexes	Male	Female
80	510	217	293	0.1	0.1	0.2
81	283	129	154	0.1	0.1	0.1
82	595	229	366	0.2	0.1	0.2
83	158	70	88	0.0	0.0	0.0
84	146	61	85	0.0	0.0	0.0
85	132	37	95	0.0	0.0	0.1
86	160	58	102	0.0	0.0	0.1
87	186	76	110	0.1	0.0	0.1
88	121	55	66	0.0	0.0	0.0
89	67	31	36	0.0	0.0	0.0
90	111	46	65	0.0	0.0	0.0
91	63	25	38	0.0	0.0	0.0
92	139	57	82	0.0	0.0	0.0
93	25	7	18	0.0	0.0	0.0
94	35	14	21	0.0	0.0	0.0
95	29	10	19	0.0	0.0	0.0
96	32	12	20	0.0	0.0	0.0
97	17	7	10	0.0	0.0	0.0
98	18	5	13	0.0	0.0	0.0
99	8	3	5	0.0	0.0	0.0
100	28	11	17	0.0	0.0	0.0
101	8	4	4	0.0	0.0	0.0
102	18	4	14	0.0	0.0	0.0
103	4	0	4	0.0	0.0	0.0
104	2	0	2	0.0	0.0	0.0
105	5	1	4	0.0	0.0	0.0
106	2	0	2	0.0	0.0	0.0
107	4	3	1	0.0	0.0	0.0
108	1	1	0	0.0	0.0	0.0
109	4	0	4	0.0	0.0	0.0
110	3	2	1	0.0	0.0	0.0
112	6	1	5	0.0	0.0	0.0
113	1	1	0	0.0	0.0	0.0
114	2	1	1	0.0	0.0	0.0
115	1	0	1	0.0	0.0	0.0
116	1	0	1	0.0	0.0	0.0
118	1	1	0	0.0	0.0	0.0
120	2	1	1	0.0	0.0	0.0

## Age-sex structure for all sectors

Table 43: Distribution (count and %) of the resident population of Kamonyi district by 5-year age group and sex

Sector=\*\*\*Gacurabwenge

Five -years age group	Counts			%		
	Both sexes	Male	Female	Both sexes	Male	Female
<b>Total</b>	<b>27850</b>	<b>13112</b>	<b>14738</b>	<b>100.0</b>	<b>100.0</b>	<b>100.0</b>
0-4	3862	1967	1895	13.9	15.0	12.9
5-9	3758	1849	1909	13.5	14.1	13.0
10-14	3275	1614	1661	11.8	12.3	11.3
15-19	3112	1559	1553	11.2	11.9	10.5
20-24	2414	1139	1275	8.7	8.7	8.7
25-29	2246	1097	1149	8.1	8.4	7.8
30-34	2118	1013	1105	7.6	7.7	7.5
35-39	1410	636	774	5.1	4.9	5.3
40-44	1306	568	738	4.7	4.3	5.0
45-49	1097	445	652	3.9	3.4	4.4
50-54	1021	418	603	3.7	3.2	4.1
55-59	670	257	413	2.4	2.0	2.8
60-64	486	187	299	1.7	1.4	2.0
65-69	314	104	210	1.1	0.8	1.4
70-74	268	86	182	1.0	0.7	1.2
75-79	209	64	145	0.8	0.5	1.0
80-84	167	63	104	0.6	0.5	0.7
85+	117	46	71	0.4	0.4	0.5

Source: Rwanda 4th Population and Housing Census, 2012, ( NISR)

Sector = \*\*\* Karama

Five -years age group	Counts			%		
	Both sexes	Male	Female	Both sexes	Male	Female
<b>Total</b>	<b>18717</b>	<b>8758</b>	<b>9959</b>	<b>100.0</b>	<b>100.0</b>	<b>100.0</b>
0-4	2685	1291	1394	14.3	14.7	14.0
5-9	2650	1319	1331	14.2	15.1	13.4
10-14	2136	1077	1059	11.4	12.3	10.6
15-19	1876	907	969	10.0	10.4	9.7
20-24	1342	621	721	7.2	7.1	7.2
25-29	1469	704	765	7.8	8.0	7.7
30-34	1530	698	832	8.2	8.0	8.4
35-39	985	447	538	5.3	5.1	5.4
40-44	857	353	504	4.6	4.0	5.1
45-49	724	315	409	3.9	3.6	4.1
50-54	769	346	423	4.1	4.0	4.2
55-59	555	225	330	3.0	2.6	3.3
60-64	342	127	215	1.8	1.5	2.2
65-69	242	101	141	1.3	1.2	1.4
70-74	214	75	139	1.1	0.9	1.4
75-79	172	83	89	0.9	0.9	0.9
80-84	97	47	50	0.5	0.5	0.5
85+	72	22	50	0.4	0.3	0.5

Source: Rwanda 4th Population and Housing Census, 2012, ( NISR)

Sector = \*\*\* Kayenzi

Five -years age group	Counts			%		
	Both sexes	Male	Female	Both sexes	Male	Female
<b>Total</b>	<b>22787</b>	<b>10920</b>	<b>11867</b>	<b>100.0</b>	<b>100.0</b>	<b>100.0</b>
0-4	2797	1374	1423	12.3	12.6	12.0
5-9	2977	1511	1466	13.1	13.8	12.4
10-14	2728	1367	1361	12.0	12.5	11.5
15-19	2343	1204	1139	10.3	11.0	9.6
20-24	1835	868	967	8.1	7.9	8.1
25-29	1953	927	1026	8.6	8.5	8.6
30-34	1703	820	883	7.5	7.5	7.4
35-39	1228	565	663	5.4	5.2	5.6
40-44	1113	483	630	4.9	4.4	5.3
45-49	995	443	552	4.4	4.1	4.7
50-54	893	415	478	3.9	3.8	4.0
55-59	714	340	374	3.1	3.1	3.2
60-64	444	193	251	1.9	1.8	2.1
65-69	297	109	188	1.3	1.0	1.6
70-74	300	106	194	1.3	1.0	1.6
75-79	231	100	131	1.0	0.9	1.1
80-84	128	62	66	0.6	0.6	0.6
85+	108	33	75	0.5	0.3	0.6

Source: Rwanda 4th Population and Housing Census, 2012, ( NISR)



Sector = \*\*\* Kayumbu

Five -years age group	Counts			%		
	Both sexes	Male	Female	Both sexes	Male	Female
<b>Total</b>	<b>15530</b>	<b>7351</b>	<b>8179</b>	<b>100.0</b>	<b>100.0</b>	<b>100.0</b>
0-4	1980	1017	963	12.7	13.8	11.8
5-9	2167	1080	1087	14.0	14.7	13.3
10-14	1840	910	930	11.8	12.4	11.4
15-19	1616	807	809	10.4	11.0	9.9
20-24	1295	605	690	8.3	8.2	8.4
25-29	1329	624	705	8.6	8.5	8.6
30-34	1041	489	552	6.7	6.7	6.7
35-39	792	346	446	5.1	4.7	5.5
40-44	733	302	431	4.7	4.1	5.3
45-49	652	276	376	4.2	3.8	4.6
50-54	676	316	360	4.4	4.3	4.4
55-59	431	194	237	2.8	2.6	2.9
60-64	275	112	163	1.8	1.5	2.0
65-69	187	68	119	1.2	0.9	1.5
70-74	221	78	143	1.4	1.1	1.7
75-79	128	54	74	0.8	0.7	0.9
80-84	96	43	53	0.6	0.6	0.6
85+	71	30	41	0.5	0.4	0.5

Source: Rwanda 4th Population and Housing Census, 2012, ( NISR)

Sector = \*\*\*Mugina

Five -years age group	Counts			%		
	Both sexes	Male	Female	Both sexes	Male	Female
<b>Total</b>	<b>38709</b>	<b>18446</b>	<b>20263</b>	<b>100.0</b>	<b>100.0</b>	<b>100.0</b>
0-4	5767	2895	2872	14.9	15.7	14.2
5-9	5956	2940	3016	15.4	15.9	14.9
10-14	4781	2366	2415	12.4	12.8	11.9
15-19	3692	1827	1865	9.5	9.9	9.2
20-24	3156	1478	1678	8.2	8.0	8.3
25-29	3076	1469	1607	7.9	8.0	7.9
30-34	2939	1411	1528	7.6	7.6	7.5
35-39	2005	871	1134	5.2	4.7	5.6
40-44	1900	852	1048	4.9	4.6	5.2
45-49	1524	702	822	3.9	3.8	4.1
50-54	1386	644	742	3.6	3.5	3.7
55-59	832	353	479	2.1	1.9	2.4
60-64	542	223	319	1.4	1.2	1.6
65-69	351	121	230	0.9	0.7	1.1
70-74	361	116	245	0.9	0.6	1.2
75-79	176	63	113	0.5	0.3	0.6
80-84	167	70	97	0.4	0.4	0.5
85+	98	45	53	0.3	0.2	0.3

Source: Rwanda 4th Population and Housing Census, 2012, (NISR)

Sector = \*\*\*Musambira

Five -years age group	Counts			%		
	Both sexes	Male	Female	Both sexes	Male	Female
<b>Total</b>	<b>34025</b>	<b>16073</b>	<b>17952</b>	<b>100.0</b>	<b>100.0</b>	<b>100.0</b>
0-4	4640	2349	2291	13.6	14.6	12.8
5-9	4809	2386	2423	14.1	14.8	13.5
10-14	4029	2038	1991	11.8	12.7	11.1
15-19	3609	1820	1789	10.6	11.3	10.0
20-24	2819	1332	1487	8.3	8.3	8.3
25-29	2700	1303	1397	7.9	8.1	7.8
30-34	2486	1144	1342	7.3	7.1	7.5
35-39	1809	788	1021	5.3	4.9	5.7
40-44	1543	661	882	4.5	4.1	4.9
45-49	1381	582	799	4.1	3.6	4.5
50-54	1361	570	791	4.0	3.5	4.4
55-59	934	404	530	2.7	2.5	3.0
60-64	655	261	394	1.9	1.6	2.2
65-69	343	112	231	1.0	0.7	1.3
70-74	344	109	235	1.0	0.7	1.3
75-79	239	89	150	0.7	0.6	0.8
80-84	186	76	110	0.5	0.5	0.6
85+	138	49	89	0.4	0.3	0.5

Source: Rwanda 4th Population and Housing Census, 2012, (NISR)

Sector = \*\*\*Ngamba

Five -years age group	Counts			%		
	Both sexes	Male	Female	Both sexes	Male	Female
<b>Total</b>	<b>14175</b>	<b>6778</b>	<b>7397</b>	<b>100.0</b>	<b>100.0</b>	<b>100.0</b>
0-4	1799	901	898	12.7	13.3	12.1
5-9	1930	995	935	13.6	14.7	12.6
10-14	1559	771	788	11.0	11.4	10.7
15-19	1547	778	769	10.9	11.5	10.4
20-24	1221	572	649	8.6	8.4	8.8
25-29	1129	542	587	8.0	8.0	7.9
30-34	1075	515	560	7.6	7.6	7.6
35-39	766	352	414	5.4	5.2	5.6
40-44	660	286	374	4.7	4.2	5.1
45-49	563	248	315	4.0	3.7	4.3
50-54	561	240	321	4.0	3.5	4.3
55-59	427	185	242	3.0	2.7	3.3
60-64	323	131	192	2.3	1.9	2.6
65-69	185	80	105	1.3	1.2	1.4
70-74	170	72	98	1.2	1.1	1.3
75-79	127	58	69	0.9	0.9	0.9
80-84	84	36	48	0.6	0.5	0.6
85+	49	16	33	0.3	0.2	0.4

Source: Rwanda 4th Population and Housing Census, 2012, (NISR)

Sector = \*\*\*Nyamiyaga

Five -years age group	Counts			%		
	Both sexes	Male	Female	Both sexes	Male	Female
<b>Total</b>	<b>38945</b>	<b>18489</b>	<b>20456</b>	<b>100.0</b>	<b>100.0</b>	<b>100.0</b>
0-4	6180	3119	3061	15.9	16.9	15.0
5-9	6047	3084	2963	15.5	16.7	14.5
10-14	4561	2311	2250	11.7	12.5	11.0
15-19	3557	1792	1765	9.1	9.7	8.6
20-24	3025	1358	1667	7.8	7.3	8.1
25-29	3198	1431	1767	8.2	7.7	8.6
30-34	2976	1426	1550	7.6	7.7	7.6
35-39	2168	970	1198	5.6	5.2	5.9
40-44	1766	764	1002	4.5	4.1	4.9
45-49	1559	652	907	4.0	3.5	4.4
50-54	1335	588	747	3.4	3.2	3.7
55-59	874	367	507	2.2	2.0	2.5
60-64	574	242	332	1.5	1.3	1.6
65-69	362	109	253	0.9	0.6	1.2
70-74	319	100	219	0.8	0.5	1.1
75-79	211	79	132	0.5	0.4	0.6
80-84	143	62	81	0.4	0.3	0.4
85+	90	35	55	0.2	0.2	0.3

Source: Rwanda 4th Population and Housing Census, 2012, (NISR)

Sector = \*\*\*Nyarubaka

Five -years age group	Counts			%		
	Both sexes	Male	Female	Both sexes	Male	Female
<b>Total</b>	<b>25155</b>	<b>11774</b>	<b>13381</b>	<b>100.0</b>	<b>100.0</b>	<b>100.0</b>
0-4	3451	1684	1767	13.7	14.3	13.2
5-9	3674	1795	1879	14.6	15.2	14.0
10-14	3124	1535	1589	12.4	13.0	11.9
15-19	2499	1278	1221	9.9	10.9	9.1
20-24	1843	877	966	7.3	7.4	7.2
25-29	2010	951	1059	8.0	8.1	7.9
30-34	1854	853	1001	7.4	7.2	7.5
35-39	1315	578	737	5.2	4.9	5.5
40-44	1152	494	658	4.6	4.2	4.9
45-49	1045	436	609	4.2	3.7	4.6
50-54	977	426	551	3.9	3.6	4.1
55-59	721	302	419	2.9	2.6	3.1
60-64	516	199	317	2.1	1.7	2.4
65-69	285	115	170	1.1	1.0	1.3
70-74	293	109	184	1.2	0.9	1.4
75-79	189	69	120	0.8	0.6	0.9
80-84	111	40	71	0.4	0.3	0.5
85+	96	33	63	0.4	0.3	0.5

Source: Rwanda 4th Population and Housing Census, 2012, (NISR)

Sector = \*\*\*Rugalika

Five -years age group	Counts			%		
	Both sexes	Male	Female	Both sexes	Male	Female
<b>Total</b>	<b>34860</b>	<b>16676</b>	<b>18184</b>	<b>100.0</b>	<b>100.0</b>	<b>100.0</b>
0-4	5452	2766	2686	15.6	16.6	14.8
5-9	4890	2390	2500	14.0	14.3	13.7
10-14	3720	1865	1855	10.7	11.2	10.2
15-19	3653	1834	1819	10.5	11.0	10.0
20-24	3047	1458	1589	8.7	8.7	8.7
25-29	3017	1474	1543	8.7	8.8	8.5
30-34	2842	1367	1475	8.2	8.2	8.1
35-39	1834	837	997	5.3	5.0	5.5
40-44	1575	711	864	4.5	4.3	4.8
45-49	1352	602	750	3.9	3.6	4.1
50-54	1127	491	636	3.2	2.9	3.5
55-59	765	310	455	2.2	1.9	2.5
60-64	530	201	329	1.5	1.2	1.8
65-69	313	120	193	0.9	0.7	1.1
70-74	314	88	226	0.9	0.5	1.2
75-79	204	72	132	0.6	0.4	0.7
80-84	121	51	70	0.3	0.3	0.4
85+	104	39	65	0.3	0.2	0.4

Source: Rwanda 4<sup>th</sup> Population and Housing Census, 2012 (NISR)

Sector = \*\*\* Rukoma

Five -years age group	Counts			%		
	Both sexes	Male	Female	Both sexes	Male	Female
<b>Total</b>	<b>34909</b>	<b>16529</b>	<b>18380</b>	<b>100.0</b>	<b>100.0</b>	<b>100.0</b>
0-4	4490	2208	2282	12.9	13.4	12.4
5-9	4682	2306	2376	13.4	14.0	12.9
10-14	4258	2106	2152	12.2	12.7	11.7
15-19	3974	1986	1988	11.4	12.0	10.8
20-24	2747	1366	1381	7.9	8.3	7.5
25-29	2534	1285	1249	7.3	7.8	6.8
30-34	2602	1227	1375	7.5	7.4	7.5
35-39	1776	780	996	5.1	4.7	5.4
40-44	1626	677	949	4.7	4.1	5.2
45-49	1365	584	781	3.9	3.5	4.2
50-54	1393	597	796	4.0	3.6	4.3
55-59	1038	472	566	3.0	2.9	3.1
60-64	757	310	447	2.2	1.9	2.4
65-69	463	172	291	1.3	1.0	1.6
70-74	461	172	289	1.3	1.0	1.6
75-79	288	104	184	0.8	0.6	1.0
80-84	256	95	161	0.7	0.6	0.9
85+	199	82	117	0.6	0.5	0.6

Source: Rwanda 4<sup>th</sup> Population and Housing Census, 2012 (NISR)



Sector = \*\*\*Runda

Five -years age group	Counts			%		
	Both sexes	Male	Female	Both sexes	Male	Female
<b>Total</b>	<b>34839</b>	<b>17283</b>	<b>17556</b>	<b>100.0</b>	<b>100.0</b>	<b>100.0</b>
0-4	4898	2473	2425	14.1	14.3	13.8
5-9	4615	2306	2309	13.2	13.3	13.2
10-14	3754	1872	1882	10.8	10.8	10.7
15-19	3778	1914	1864	10.8	11.1	10.6
20-24	3482	1786	1696	10.0	10.3	9.7
25-29	3334	1677	1657	9.6	9.7	9.4
30-34	3038	1612	1426	8.7	9.3	8.1
35-39	1854	877	977	5.3	5.1	5.6
40-44	1513	757	756	4.3	4.4	4.3
45-49	1166	545	621	3.3	3.2	3.5
50-54	1031	479	552	3.0	2.8	3.1
55-59	801	352	449	2.3	2.0	2.6
60-64	538	237	301	1.5	1.4	1.7
65-69	355	120	235	1.0	0.7	1.3
70-74	299	108	191	0.9	0.6	1.1
75-79	153	63	90	0.4	0.4	0.5
80-84	136	61	75	0.4	0.4	0.4
85+	94	44	50	0.3	0.3	0.3

Source: Rwanda 4<sup>th</sup> Population and Housing Census, 2012 (NISR)

Table 44: Distribution (Count) of the resident population of Kamonyi district aged 12 years and above by Marital status, Sector and Sex [Male]

Sectors	Total population aged 12+	Never married	Married	Separated	Widowed	Divorced	Not Stated
Male (Count)							
Rwanda	3,284,937	1655398	1557403	6916	41028	23326	866
Southern Province	798069	398728	379024	1898	11979	6214	226
Kamonyi district	105787	53189	50284	271	1343	658	42
Gacurabwenge	8614	4803	3652	23	101	33	2
Karama	5683	2696	2870	9	79	25	4
Kayenzi	7442	3608	3699	13	102	20	0
Kayumbu	4870	2206	2569	5	67	21	2
Mugina	11576	5423	5902	44	132	72	3
Musambira	10472	5412	4819	43	144	50	4
Ngamba	4571	2283	2186	7	70	18	7
Nyamiyaga	11306	5266	5779	48	109	98	6
Nyarubaka	7646	3680	3737	17	113	95	4
Rugarika	10713	5415	5078	19	119	79	3
Rukoma	11148	6065	4831	20	166	60	6
Runda	11746	6332	5162	23	141	87	1
Sectors	Total	Never married	Married	Separated	Widowed	Divorced	Not Stated
Male (%)							
Rwanda	100	50,4	47,4	0,2	1,2	0,7	0,0
Southern province	100,0	50,0	47,5	0,2	1,5	0,8	0,0
Kamonyi district	100,0	50,3	47,5	0,3	1,3	0,6	0,0
Gacurabwenge	100,0	55,8	42,4	0,3	1,2	0,4	0,0
Karama	100,0	47,4	50,5	0,2	1,4	0,4	0,1

Kayenzi	100,0	48,5	49,7	0,2	1,4	0,3	0,0
Kayumbu	100,0	45,3	52,8	0,1	1,4	0,4	0,0
Mugina	100,0	46,8	51,0	0,4	1,1	0,6	0,0
Musambira	100,0	51,7	46,0	0,4	1,4	0,5	0,0
Ngamba	100,0	49,9	47,8	0,2	1,5	0,4	0,2
Nyamiyaga	100,0	46,6	51,1	0,4	1,0	0,9	0,1
Nyarubaka	100,0	48,1	48,9	0,2	1,5	1,2	0,1
Rugarika	100,0	50,5	47,4	0,2	1,1	0,7	0,0
Rukoma	100,0	54,4	43,3	0,2	1,5	0,5	0,1
Runda	100,0	50,3	47,5	0,3	1,3	0,6	0,0

Source: Rwanda 4<sup>th</sup> Population and Housing Census, 2012 (NISR)

Table 45: Distribution (%) of the resident population of Kamonyi district aged 12 years and above by Marital status, Age groups and Sex [Female]

Sectors	Total population aged 12+	Never married	Married	Separated	Widowed	Divorced	Not Stated
Female (Count)							
Rwanda	3652741	1499069	1641203	28625	399117	82142	2585
Southern Province	917349	369952	402466	8999	113929	21262	741
Kamonyi district	121722	49875	54015	1232	14176	2314	110
Gacurabwenge	10279	4654	4017	130	1332	135	11
Karama	6764	2738	3068	66	826	65	1
Kayenzi	8416	3586	3948	70	753	52	7
Kayumbu	5716	2219	2761	22	622	84	8
Mugina	13313	4965	6255	165	1585	334	9
Musambira	12377	5247	5247	171	1508	184	20
Ngamba	5235	2223	2352	38	539	77	6
Nyamiyaga	13476	5038	6307	161	1561	396	13
Nyarubaka	9043	3520	3902	66	1232	322	1
Rugarika	12196	4866	5529	136	1450	201	14
Rukoma	12859	5653	5416	98	1475	208	9
Runda	12048	5166	5213	109	1293	256	11
Female (%)							
Rwanda	100,0	41,0	44,9	0,8	10,9	2,2	0,1
Southern province	100,0	40,3	43,9	1,0	12,4	2,3	0,1
Kamonyi district	100,0	41,0	44,4	1,0	11,6	1,9	0,1
Gacurabwenge	100,0	45,3	39,1	1,3	13,0	1,3	0,1
Karama	100,0	40,5	45,4	1,0	12,2	1,0	0,0
Kayenzi	100,0	42,6	46,9	0,8	8,9	0,6	0,1
Kayumbu	100,0	38,8	48,3	0,4	10,9	1,5	0,1
Mugina	100,0	37,3	47,0	1,2	11,9	2,5	0,1
Musambira	100,0	42,4	42,4	1,4	12,2	1,5	0,2

Ngamba	100,0	42,5	44,9	0,7	10,3	1,5	0,1
Nyamiyaga	100,0	37,4	46,8	1,2	11,6	2,9	0,1
Nyarubaka	100,0	38,9	43,1	0,7	13,6	3,6	0,0
Rugarika	100,0	39,9	45,3	1,1	11,9	1,6	0,1
Rukoma	100,0	44,0	42,1	0,8	11,5	1,6	0,1
Runda	100,0	42,9	43,3	0,9	10,7	2,1	0,1

Source: Rwanda 4<sup>th</sup> Population and Housing Census, 2012 (NISR)

Table 46: Distribution (count and %) of the resident population in Kamonyi district aged 12 years and above by Marital status, Age groups and Sex [Male, Female]

Age group	Total population aged 12+	Total (%)	Never married	Married	Separated	Widowed	Divorced	Not Stated
<b>Male</b>								
<b>Rwanda</b>	<b>3,284,937</b>	<b>100</b>	<b>50.4</b>	<b>47.4</b>	<b>0.2</b>	<b>0.7</b>	<b>1.2</b>	<b>0.0</b>
<b>Southern Province</b>	<b>798069</b>	<b>100</b>	<b>50,0</b>	<b>47,5</b>	<b>0,2</b>	<b>1,5</b>	<b>0,8</b>	<b>0,0</b>
<b>Kamonyi district</b>	<b>105787</b>	<b>100</b>	<b>50,3</b>	<b>47,5</b>	<b>0,3</b>	<b>1,3</b>	<b>0,6</b>	<b>0,0</b>
12-14	11435	100	99,8	0,2	0,0	0,0	0,0	0,0
15-19	17706	100	99,5	0,4	0,0	0,0	0,0	0,0
20-24	13460	100	88,8	11,0	0,0	0,1	0,1	0,0
25-29	13484	100	52,2	47,2	0,2	0,1	0,3	0,0
30-34	12575	100	23,4	75,5	0,3	0,2	0,6	0,0
35-39	8047	100	11,2	86,6	0,4	0,4	1,2	0,1
40-44	6908	100	7,8	90,1	0,3	0,7	1,0	0,0
45-49	5830	100	5,5	90,8	0,6	1,7	1,3	0,1
50-54	5530	100	3,5	90,7	0,6	3,3	1,7	0,1
55-59	3761	100	3,0	90,0	0,7	4,5	1,8	0,1
60-64	2423	100	2,3	89,2	0,5	5,9	2,0	0,1
65-69	1331	100	2,0	85,6	0,8	9,5	1,9	0,2
70-74	1219	100	1,5	84,5	1,1	10,4	2,2	0,2
75-79	898	100	1,9	83,5	0,6	12,2	1,7	0,1
80-84	706	100	2,7	79,0	0,8	16,3	1,0	0,1
85+	474	100	3,0	66,2	0,6	29,3	0,4	0,4
<b>Female</b>								
<b>Rwanda</b>	<b>3,652,741</b>	<b>100</b>	<b>41.1</b>	<b>44.9</b>	<b>0.8</b>	<b>10.9</b>	<b>2.2</b>	<b>0.1</b>
<b>Southern Province</b>	<b>917349</b>	<b>100</b>	<b>40,3</b>	<b>43,9</b>	<b>1,0</b>	<b>12,4</b>	<b>2,3</b>	<b>0,1</b>
<b>Kamonyi district</b>	<b>121722</b>	<b>100</b>	<b>41,0</b>	<b>44,4</b>	<b>1,0</b>	<b>11,6</b>	<b>1,9</b>	<b>0,1</b>
12-14	11494	100	99,5	0,4	0,0	0,0	0,0	0,0
15-19	17550	100	97,6	2,2	0,1	0,1	0,1	0,0
20-24	14766	100	71,0	27,7	0,5	0,1	0,7	0,0
25-29	14511	100	34,5	62,2	1,2	0,5	1,6	0,1
30-34	13629	100	18,3	76,2	1,7	1,5	2,4	0,1
35-39	9895	100	12,4	77,7	1,9	4,4	3,5	0,1
40-44	8836	100	10,3	71,7	1,8	12,2	3,9	0,1
45-49	7593	100	7,1	64,8	1,8	22,3	3,9	0,1
50-54	7000	100	4,9	58,9	1,7	30,7	3,7	0,2
55-59	5001	100	2,7	54,7	1,4	37,8	3,3	0,1
60-64	3559	100	1,9	48,2	1,0	45,8	2,9	0,2
65-69	2366	100	1,3	40,4	1,0	54,5	2,4	0,4
70-74	2345	100	0,9	37,2	0,4	59,0	1,7	0,7
75-79	1429	100	1,5	29,7	0,3	66,3	1,8	0,3
80-84	986	100	1,9	19,8	0,3	77,0	0,4	0,6
85+	762	100	2,9	14,0	0,3	81,4	0,8	0,7

Table 47: Distribution (count and %) of the school-age population of Kamonyi district by Sector and by School attendance status and Sex (Male)

Sectors	Count				%			
	Total	Currently attending	No longer attending	Never attended	Total	Currently attending	No longer attending	Never attended
<b>Pres-school age (3-6 years)</b>								
<b>Rwanda</b>	<b>637995</b>	<b>185075</b>	<b>3491</b>	<b>449429</b>	<b>100</b>	<b>29,0</b>	<b>0,5</b>	<b>70,4</b>
<b>Southern Province</b>	<b>159016</b>	<b>39031</b>	<b>714</b>	<b>119271</b>	<b>100</b>	<b>24,5</b>	<b>0,4</b>	<b>75,0</b>
<b>Kamonyi district</b>	<b>20383</b>	<b>7006</b>	<b>150</b>	<b>13227</b>	<b>100</b>	<b>34,4</b>	<b>0,7</b>	<b>64,9</b>
Gacurabwenge	1605	489	8	1108	100	30,5	0,5	69,0
Karama	1129	559	5	565	100	49,5	0,4	50,0
Kayenzi	1214	494	6	714	100	40,7	0,5	58,8
Kayumbu	861	286	6	569	100	33,2	0,7	66,1
Mugina	2548	445	35	2068	100	17,5	1,4	81,2
Musambira	2049	756	15	1278	100	36,9	0,7	62,4
Ngamba	805	296	0	509	100	36,8	0,0	63,2
Nyamiyaga	2662	918	33	1711	100	34,5	1,2	64,3
Nyarubaka	1462	685	11	766	100	46,9	0,8	52,4
Rugarika	2261	600	12	1649	100	26,5	0,5	72,9
Rukoma	1795	618	8	1169	100	34,4	0,4	65,1
Runda	1992	860	11	1121	100	43,2	0,6	56,3
<b>Primary school age (7-12 years)</b>								
<b>Rwanda</b>	<b>847,951</b>	<b>778,099</b>	<b>8,781</b>	<b>61,071</b>	<b>100</b>	<b>91,8</b>	<b>1,0</b>	<b>7,2</b>
<b>Southern Province</b>	<b>209209</b>	<b>190685</b>	<b>2628</b>	<b>15896</b>	<b>100</b>	<b>91,1</b>	<b>1,3</b>	<b>7,6</b>
<b>Kamonyi district</b>	<b>27127</b>	<b>25657</b>	<b>354</b>	<b>1116</b>	<b>100</b>	<b>94,6</b>	<b>1,3</b>	<b>4,1</b>
Gacurabwenge	2193	2061	44	88	100	94,0	2,0	4,0
Karama	1471	1438	5	28	100	97,8	0,3	1,9
Kayenzi	1775	1720	12	43	100	96,9	0,7	2,4
Kayumbu	1249	1189	32	28	100	95,2	2,6	2,2
Mugina	3274	2915	93	266	100	89,0	2,8	8,1
Musambira	2713	2594	26	93	100	95,6	1,0	3,4
Ngamba	1107	1079	6	22	100	97,5	0,5	2,0
Nyamiyaga	3249	3061	35	153	100	94,2	1,1	4,7
Nyarubaka	2114	2005	23	86	100	94,8	1,1	4,1
Rugarika	2624	2454	40	130	100	93,5	1,5	5,0
Rukoma	2815	2704	24	87	100	96,1	0,9	3,1
Runda	2543	2437	14	92	100	95,8	0,6	3,6
<b>Secondary school age (13-18 years)</b>								
<b>Rwanda</b>	<b>671,825</b>	<b>499,738</b>	<b>138,801</b>	<b>33,286</b>	<b>100</b>	<b>74,4</b>	<b>20,7</b>	<b>5,0</b>
<b>Southern Province</b>	<b>165653</b>	<b>125551</b>	<b>32702</b>	<b>7400</b>	<b>100</b>	<b>75,8</b>	<b>19,7</b>	<b>4,5</b>
<b>Kamonyi District</b>	<b>21598</b>	<b>16386</b>	<b>4440</b>	<b>772</b>	<b>100</b>	<b>75,9</b>	<b>20,6</b>	<b>3,6</b>

Sectors	Count				%			
	Total	Currently attending	No longer attending	Never attended	Total	Currently attending	No longer attending	Never attended
Gacurabwenge	1843	1445	341	57	100	78,4	18,5	3,1
Karama	1097	855	220	22	100	77,9	20,1	2,0
Kayenzi	1477	1160	281	36	100	78,5	19,0	2,4
Kayumbu	990	721	236	33	100	72,8	23,8	3,3
Mugina	2320	1671	532	117	100	72,0	22,9	5,0
Musambira	2240	1868	300	72	100	83,4	13,4	3,2
Ngamba	933	662	250	21	100	71,0	26,8	2,3
Nyamiyaga	2287	1743	430	114	100	76,2	18,8	5,0
Nyarubaka	1569	1143	361	65	100	72,8	23,0	4,1
Rugarika	2191	1602	507	82	100	73,1	23,1	3,7
Rukoma	2405	1762	567	76	100	73,3	23,6	3,2
Runda	2246	1754	415	77	100	78,1	18,5	3,4

Source: Rwanda 4<sup>th</sup> Population and Housing Census, 2012 (NISR)

Table 48: Distribution (count and %) of the school-age population of Kamonyi district by Sector and by School attendance status and Sex (Female)

Sectors	Count				%			
	Total	Currently attending	No longer attending	Never attended	Total	Currently attending	No longer attending	Never attended
<b>Pre-school age (3-6 years)</b>								
<b>Rwanda</b>	<b>642,862</b>	<b>197,189</b>	<b>3,613</b>	<b>442,060</b>	<b>100</b>	<b>30,7</b>	<b>0,6</b>	<b>68,8</b>
<b>Southern Province</b>	<b>160104</b>	<b>42397</b>	<b>729</b>	<b>116978</b>	<b>100</b>	<b>26,5</b>	<b>0,5</b>	<b>73,1</b>
<b>Kamonyi district</b>	<b>20826</b>	<b>7624</b>	<b>131</b>	<b>13071</b>	<b>100</b>	<b>36,6</b>	<b>0,6</b>	<b>62,8</b>
Gacurabwenge	1669	575	16	1078	100	34,5	1,0	64,6
Karama	1209	619	9	581	100	51,2	0,7	48,1
Kayenzi	1263	510	6	747	100	40,4	0,5	59,1
Kayumbu	919	311	6	602	100	33,8	0,7	65,5
Mugina	2606	487	29	2090	100	18,7	1,1	80,2
Musambira	2015	857	5	1153	100	42,5	0,2	57,2
Ngamba	756	280	5	471	100	37,0	0,7	62,3
Nyamiyaga	2593	941	22	1630	100	36,3	0,8	62,9
Nyarubaka	1598	729	11	858	100	45,6	0,7	53,7
Rugarika	2234	654	8	1572	100	29,3	0,4	70,4
Rukoma	1944	704	4	1236	100	36,2	0,2	63,6
Runda	2020	957	10	1053	100	47,4	0,5	52,1
<b>Primary school age (7-12 years)</b>								
<b>Rwanda</b>	<b>864,508</b>	<b>805,864</b>	<b>7,036</b>	<b>51,608</b>	<b>100</b>	<b>93,2</b>	<b>0,8</b>	<b>6,0</b>
<b>Southern Province</b>	<b>211831</b>	<b>197034</b>	<b>1925</b>	<b>12872</b>	<b>100</b>	<b>93,0</b>	<b>0,9</b>	<b>6,1</b>
<b>Kamonyi district</b>	<b>54296</b>	<b>51632</b>	<b>617</b>	<b>2047</b>	<b>100</b>	<b>95,1</b>	<b>1,1</b>	<b>3,8</b>
Gacurabwenge	4357	4108	85	164	100	94,3	2,0	3,8
Karama	2952	2890	10	52	100	97,9	0,3	1,8
Kayenzi	3521	3421	18	82	100	97,2	0,5	2,3
Kayumbu	2482	2372	56	54	100	95,6	2,3	2,2



Sectors	Count				%			
	Total	Currently attending	No longer attending	Never attended	Total	Currently attending	No longer attending	Never attended
Mugina	6599	5939	178	482	100	90,0	2,7	7,3
Musambira	5481	5260	62	159	100	96,0	1,1	2,9
Ngamba	2186	2133	6	47	100	97,6	0,3	2,2
Nyamiyaga	6463	6125	55	283	100	94,8	0,9	4,4
Nyarubaka	4259	4053	37	169	100	95,2	0,9	4,0
Rugarika	5289	4985	53	251	100	94,3	1,0	4,7
Rukoma	5627	5446	32	149	100	96,8	0,6	2,6
Runda	5080	4900	25	155	100	96,5	0,5	3,1
<b>Secondary school age (13-18 years)</b>								
<b>Rwanda</b>	<b>693,946</b>	<b>516,716</b>	<b>148,694</b>	<b>28,536</b>	<b>100</b>	<b>74,5</b>	<b>21,4</b>	<b>4,1</b>
<b>Southern Province</b>	<b>166798</b>	<b>129987</b>	<b>31525</b>	<b>5286</b>	<b>100</b>	<b>77,9</b>	<b>18,9</b>	<b>3,2</b>
<b>Kamonyi district</b>	<b>21478</b>	<b>17531</b>	<b>3486</b>	<b>461</b>	<b>100</b>	<b>81,6</b>	<b>16,2</b>	<b>2,1</b>
Gacurabwenge	1847	1577	239	31	100	85,4	12,9	1,7
Karama	1153	991	148	14	100	85,9	12,8	1,2
Kayenzi	1418	1218	182	18	100	85,9	12,8	1,3
Kayumbu	991	771	200	20	100	77,8	20,2	2,0
Mugina	2388	1766	549	73	100	74,0	23,0	3,1
Musambira	2127	1841	228	58	100	86,6	10,7	2,7
Ngamba	917	796	112	9	100	86,8	12,2	1,0
Nyamiyaga	2236	1751	423	62	100	78,3	18,9	2,8
Nyarubaka	1564	1191	329	44	100	76,2	21,0	2,8
Rugarika	2148	1694	403	51	100	78,9	18,8	2,4
Rukoma	2449	2134	279	36	100	87,1	11,4	1,5
Runda	1847	1577	239	31	100	85,4	12,9	1,7

Source: Rwanda 4<sup>th</sup> Population and Housing Census, 2012 (NISR)

Table 49: Distribution (count and %) of the resident population of Kamonyi district aged 3 years and above by Highest level of educational attainment and Sector (Male)

Sectors	Highest level of education attained							
	Total	Never attended	Pre-school	Primary	Post-Primary	Secondary	University	Not stated
<b>Male (Count)</b>								
<b>Rwanda</b>	<b>4,616,716</b>	<b>1,050,073</b>	<b>166,311</b>	<b>2,682,674</b>	<b>36,952</b>	<b>524,246</b>	<b>112,064</b>	<b>44,396</b>
<b>Southern Province</b>	<b>1128415</b>	<b>281346</b>	<b>37445</b>	<b>670320</b>	<b>11551</b>	<b>100780</b>	<b>16509</b>	<b>10464</b>
<b>Kamonyi district</b>	<b>148552</b>	<b>29902</b>	<b>6589</b>	<b>93751</b>	<b>1769</b>	<b>13467</b>	<b>1548</b>	<b>1526</b>
Gacurabwenge	12016	2242	409	7392	200	1448	182	143
Karama	8025	1339	469	5303	87	710	69	48
Kayenzi	10135	1585	566	6763	118	898	119	86
Kayumbu	6757	1419	265	4312	86	520	46	109
Mugina	16843	4179	391	10638	150	1249	103	133
Musambira	14763	3081	864	8918	132	1437	164	167
Ngamba	6278	1128	237	4175	55	568	52	63
Nyamiyaga	16689	4010	927	10308	135	1068	69	172
Nyarubaka	10817	2164	681	7049	93	684	56	90
Rugarika	15145	3318	544	9477	251	1284	127	144
Rukoma	15242	2730	481	9915	207	1506	194	209
Runda	15842	2707	755	9501	255	2095	367	162
<b>Male (%)</b>								
<b>Rwanda</b>	<b>100</b>	<b>22.8</b>	<b>3.6</b>	<b>58.1</b>	<b>0.8</b>	<b>11.4</b>	<b>2.4</b>	<b>1.0</b>
<b>Southern Province</b>	<b>100</b>	<b>18,7</b>	<b>3,4</b>	<b>61,5</b>	<b>1,7</b>	<b>12,1</b>	<b>1,5</b>	<b>1,2</b>
<b>Kamonyi district</b>	<b>100</b>	<b>20,1</b>	<b>4,4</b>	<b>63,1</b>	<b>1,2</b>	<b>9,1</b>	<b>1,0</b>	<b>1,0</b>
Gacurabwenge	100	18,7	3,4	61,5	1,7	12,1	1,5	1,2
Karama	100	16,7	5,8	66,1	1,1	8,8	0,9	0,6
Kayenzi	100	15,6	5,6	66,7	1,2	8,9	1,2	0,8
Kayumbu	100	21,0	3,9	63,8	1,3	7,7	0,7	1,6
Mugina	100	24,8	2,3	63,2	0,9	7,4	0,6	0,8
Musambira	100	20,9	5,9	60,4	0,9	9,7	1,1	1,1
Ngamba	100	18,0	3,8	66,5	0,9	9,0	0,8	1,0
Nyamiyaga	100	24,0	5,6	61,8	0,8	6,4	0,4	1,0
Nyarubaka	100	20,0	6,3	65,2	0,9	6,3	0,5	0,8
Rugarika	100	21,9	3,6	62,6	1,7	8,5	0,8	1,0
Rukoma	100	17,9	3,2	65,1	1,4	9,9	1,3	1,4
Runda	100	17,1	4,8	60,0	1,6	13,2	2,3	1,0

Source: Rwanda 4<sup>th</sup> Population and Housing Census, 2012 (NISR)

Table 50: Distribution (%) of the resident population of Kamonyi district aged 3 years and above by Highest level of educational attainment and Sector (Female)

Sectors	Highest level of education attained							
	Total	Never attended	Pre-school	Primary	Post-Primary	Secondary	University	Not stated
<b>Female (Count)</b>								
<b>Rwanda</b>	5001594	1397566	171388	2766235	35048	510488	73547	47322
<b>Southern Province</b>	1250460	353277	38925	710313	11813	113522	11104	11506
<b>Kamonyi district</b>	164937	37994	6815	98177	1907	17181	1140	1723
Gacurabwenge	13679	2860	454	7940	204	1920	129	172
Karama	9214	1786	516	5675	114	1033	37	53
Kayenzi	11090	2172	565	6815	126	1238	71	103
Kayumbu	7648	1888	285	4527	58	718	29	143
Mugina	18702	5055	393	11370	165	1498	62	159
Musambira	16663	3962	897	9656	151	1710	95	192
Ngamba	6888	1497	219	4171	85	814	26	76
Nyamiyaga	18739	4904	914	11126	157	1389	46	203
Nyarubaka	12412	3039	664	7666	83	808	35	117
Rugarika	16645	3949	593	10015	212	1624	106	146
Rukoma	17087	3645	505	10014	327	2237	152	207
Runda	16170	3237	810	9202	225	2192	352	152
<b>Female (%)</b>								
<b>Rwanda</b>	100	27,9	3,4	55,3	0,7	10,2	1,5	0,9
<b>Southern Province</b>	100	28,3	3,1	56,8	0,9	9,1	0,9	0,9
<b>Kamonyi district</b>	100	23,0	4,1	59,5	1,2	10,4	0,7	1,0
Gacurabwenge	100	20,9	3,3	58,0	1,5	14,0	0,9	1,3
Karama	100	19,4	5,6	61,6	1,2	11,2	0,4	0,6
Kayenzi	100	19,6	5,1	61,5	1,1	11,2	0,6	0,9
Kayumbu	100	24,7	3,7	59,2	0,8	9,4	0,4	1,9
Mugina	100	27,0	2,1	60,8	0,9	8,0	0,3	0,9
Musambira	100	23,8	5,4	57,9	0,9	10,3	0,6	1,2
Ngamba	100	21,7	3,2	60,6	1,2	11,8	0,4	1,1
Nyamiyaga	100	26,2	4,9	59,4	0,8	7,4	0,2	1,1
Nyarubaka	100	24,5	5,3	61,8	0,7	6,5	0,3	0,9
Rugarika	100	23,7	3,6	60,2	1,3	9,8	0,6	0,9
Rukoma	100	21,3	3,0	58,6	1,9	13,1	0,9	1,2
Runda	100	20,0	5,0	56,9	1,4	13,6	2,2	0,9

Source: Rwanda 4<sup>th</sup> Population and Housing Census, 2012 (NISR)

Table 512: Distribution (%) of the resident population of Kamonyi district aged 16 years and above by Economic activity status and Sector (both sexes)

Sex/ Sectors	Total	Employed	Unemploy ed	Home worker	Retired	Old age	Studen t	Other
<b>Both sexes (Count)</b>								
<b>Rwanda</b>	<b>5846266</b>	<b>4152682</b>	<b>147876</b>	<b>495462</b>	<b>13872</b>	<b>158650</b>	<b>785655</b>	<b>92069</b>
<b>Southern Province</b>	<b>1438382</b>	<b>995593</b>	<b>33662</b>	<b>146271</b>	<b>2909</b>	<b>43830</b>	<b>191898</b>	<b>24219</b>
<b>Kamonyi district</b>	<b>196727</b>	<b>145513</b>	<b>3788</b>	<b>11934</b>	<b>301</b>	<b>5512</b>	<b>26574</b>	<b>3105</b>
Gacurabwenge	16223	10539	584	1681	49	498	2566	306
Karama	10798	8636	70	139	11	373	1458	111
Kayenzi	13759	10808	107	411	15	388	1865	165
Kayumbu	9178	5917	149	1530	10	332	1128	112
Mugina	21427	16914	342	917	30	516	2348	360
Musambira	19780	13425	552	1391	30	739	3189	454
Ngamba	8529	6352	131	495	4	242	1197	108
Nyamiyaga	21431	16819	533	522	42	533	2382	600
Nyarubaka	14341	9855	232	1945	15	439	1584	271
Rugarika	20024	15501	310	948	18	407	2692	148
Rukoma	20588	15972	212	519	47	576	3054	208
Runda	20649	14775	566	1436	30	469	3111	262
<b>Both sexes (%)</b>								
<b>Rwanda</b>	<b>100</b>	<b>71,0</b>	<b>2,5</b>	<b>8,5</b>	<b>0,2</b>	<b>2,7</b>	<b>13,4</b>	<b>1,6</b>
<b>Southern Province</b>	<b>100</b>	<b>69,2</b>	<b>2,3</b>	<b>10,2</b>	<b>0,2</b>	<b>3,0</b>	<b>13,3</b>	<b>1,7</b>
<b>Kamonyi district</b>	<b>100</b>	<b>74,0</b>	<b>1,9</b>	<b>6,1</b>	<b>,2</b>	<b>2,8</b>	<b>13,5</b>	<b>1,6</b>
Gacurabwenge	100	65,0	3,6	10,4	,3	3,1	15,8	1,9
Karama	100	80,0	,6	1,3	,1	3,5	13,5	1,0
Kayenzi	100	78,6	,8	3,0	,1	2,8	13,6	1,2
Kayumbu	100	64,5	1,6	16,7	,1	3,6	12,3	1,2
Mugina	100	78,9	1,6	4,3	,1	2,4	11,0	1,7
Musambira	100	67,9	2,8	7,0	,2	3,7	16,1	2,3
Ngamba	100	74,5	1,5	5,8	,0	2,8	14,0	1,3
Nyamiyaga	100	78,5	2,5	2,4	,2	2,5	11,1	2,8
Nyarubaka	100	68,7	1,6	13,6	,1	3,1	11,0	1,9
Rugarika	100	77,4	1,5	4,7	,1	2,0	13,4	,7
Rukoma	100	77,6	1,0	2,5	,2	2,8	14,8	1,0
Runda	100	71,6	2,7	7,0	,1	2,3	15,1	1,3

Source: Rwanda 4<sup>th</sup> Population and Housing Census, 2012 (NISR)

Table 52: Distribution (count and %) of the resident population of Kamonyi district aged 16 years and above by Economic activity status and Sector (Male)

Sex/ Sectors	Total	Employed	Unemployed	Home worker	Retired	Old age	Student	Other
<b>Male (Count)</b>								
<b>Rwanda</b>	<b>2716688</b>	<b>1998012</b>	<b>57097</b>	<b>158308</b>	<b>6527</b>	<b>54754</b>	<b>402556</b>	<b>39434</b>
<b>Southern Province</b>	<b>649967</b>	<b>463521</b>	<b>13043</b>	<b>50734</b>	<b>1282</b>	<b>14690</b>	<b>96337</b>	<b>10360</b>
<b>Kamonyi district</b>	<b>90378</b>	<b>69097</b>	<b>1326</b>	<b>3952</b>	<b>148</b>	<b>1822</b>	<b>12705</b>	<b>1328</b>
Gacurabwenge	7332	5093	198	530	23	155	1211	122
Karama	4855	3890	24	73	5	142	675	46
Kayenzi	6402	5123	43	145	8	141	878	64
Kayumbu	4183	2858	75	531	3	124	549	43
Mugina	9861	7912	105	350	12	157	1167	158
Musambira	8901	6291	182	435	13	226	1581	173
Ngamba	3942	3011	64	194	1	86	527	59
Nyamiyaga	9606	7656	184	193	17	174	1153	229
Nyarubaka	6467	4698	83	623	7	138	799	119
Rugarika	9236	7372	96	295	11	121	1272	69
Rukoma	9466	7445	92	257	30	199	1349	94
Runda	10127	7748	180	326	18	159	1544	152
<b>Male (%)</b>								
<b>Rwanda</b>	<b>100</b>	<b>73,5</b>	<b>2,1</b>	<b>5,8</b>	<b>0,2</b>	<b>2,0</b>	<b>14,8</b>	<b>1,5</b>
<b>Southern Province</b>	<b>100</b>	<b>71,3</b>	<b>2,0</b>	<b>7,8</b>	<b>0,2</b>	<b>2,3</b>	<b>14,8</b>	<b>1,6</b>
<b>Kamonyi district</b>	<b>100</b>	<b>76,5</b>	<b>1,5</b>	<b>4,4</b>	<b>,2</b>	<b>2,0</b>	<b>14,1</b>	<b>1,5</b>
Gacurabwenge	100	69,5	2,7	7,2	,3	2,1	16,5	1,7
Karama	100	80,1	,5	1,5	,1	2,9	13,9	,9
Kayenzi	100	80,0	,7	2,3	,1	2,2	13,7	1,0
Kayumbu	100	68,3	1,8	12,7	,1	3,0	13,1	1,0
Mugina	100	80,2	1,1	3,5	,1	1,6	11,8	1,6
Musambira	100	70,7	2,0	4,9	,1	2,5	17,8	1,9
Ngamba	100	76,4	1,6	4,9	,0	2,2	13,4	1,5
Nyamiyaga	100	79,7	1,9	2,0	,2	1,8	12,0	2,4
Nyarubaka	100	72,6	1,3	9,6	,1	2,1	12,4	1,8
Rugarika	100	79,8	1,0	3,2	,1	1,3	13,8	,7
Rukoma	100	78,6	1,0	2,7	,3	2,1	14,3	1,0
Runda	100	76,5	1,8	3,2	,2	1,6	15,2	1,5

Source: Rwanda 4<sup>th</sup> Population and Housing Census, 2012 (NISR)

Table 53: Distribution (%) of the resident population of Kamonyi district aged 16 years and above by Economic activity status and Sector (Female)

Sex/ Sectors	Total	Employed	Unemployed	Home worker	Retired	Old age	Student	Other
<b>Female (Count)</b>								
<b>Rwanda</b>	<b>3129578</b>	<b>2154670</b>	<b>90779</b>	<b>337154</b>	<b>7345</b>	<b>103896</b>	<b>383099</b>	<b>52635</b>
<b>Southern Province</b>	<b>788415</b>	<b>532072</b>	<b>20619</b>	<b>95537</b>	<b>1627</b>	<b>29140</b>	<b>95561</b>	<b>13859</b>
<b>Kamonyi district</b>	<b>106349</b>	<b>76416</b>	<b>2462</b>	<b>7982</b>	<b>153</b>	<b>3690</b>	<b>13869</b>	<b>1777</b>
Gacurabwenge	8891	5446	386	1151	26	343	1355	184
Karama	5943	4746	46	66	6	231	783	65
Kayenzi	7357	5685	64	266	7	247	987	101
Kayumbu	4995	3059	74	999	7	208	579	69
Mugina	11566	9002	237	567	18	359	1181	202
Musambira	10879	7134	370	956	17	513	1608	281
Ngamba	4587	3341	67	301	3	156	670	49
Nyamiyaga	11825	9163	349	329	25	359	1229	371
Nyarubaka	7874	5157	149	1322	8	301	785	152
Rugarika	10788	8129	214	653	7	286	1420	79
Rukoma	11122	8527	120	262	17	377	1705	114
Runda	10522	7027	386	1110	12	310	1567	110
<b>Female (%)</b>								
<b>Rwanda</b>	<b>100</b>	<b>68,8</b>	<b>2,9</b>	<b>10,8</b>	<b>0,2</b>	<b>3,3</b>	<b>12,2</b>	<b>1,7</b>
<b>Southern Province</b>	<b>100</b>	<b>67,5</b>	<b>2,6</b>	<b>12,1</b>	<b>0,2</b>	<b>3,7</b>	<b>12,1</b>	<b>1,8</b>
<b>Kamonyi district</b>	<b>100</b>	<b>71,9</b>	<b>2,3</b>	<b>7,5</b>	<b>,1</b>	<b>3,5</b>	<b>13,0</b>	<b>1,7</b>
Gacurabwenge	100	61,3	4,3	12,9	,3	3,9	15,2	2,1
Karama	100	79,9	,8	1,1	,1	3,9	13,2	1,1
Kayenzi	100	77,3	,9	3,6	,1	3,4	13,4	1,4
Kayumbu	100	61,2	1,5	20,0	,1	4,2	11,6	1,4
Mugina	100	77,8	2,0	4,9	,2	3,1	10,2	1,7
Musambira	100	65,6	3,4	8,8	,2	4,7	14,8	2,6
Ngamba	100	72,8	1,5	6,6	,1	3,4	14,6	1,1
Nyamiyaga	100	77,5	3,0	2,8	,2	3,0	10,4	3,1
Nyarubaka	100	65,5	1,9	16,8	,1	3,8	10,0	1,9
Rugarika	100	75,4	2,0	6,1	,1	2,7	13,2	,7
Rukoma	100	76,7	1,1	2,4	,2	3,4	15,3	1,0
Runda	100	66,8	3,7	10,5	,1	2,9	14,9	1,0

Source: Rwanda 4<sup>th</sup> Population and Housing Census, 2012 (NISR)

Table 54: Distribution (count and %) of private households in Kamonyi district by main source of water and by Sector

Sectors	Total (Count)	Total (%)	Internal pipe-born water	Pipe-born water in the compound	Public tap out of the compound	Protected spring/well	Unprotected spring/well	Rain water	River	Lake/Stream/Pond/Surface water	Other	Not stated
			Improved source of water				Unimproved source of water					
<b>Rwanda</b>	<b>2 424 898</b>	<b>100</b>	<b>0,5</b>	<b>7,1</b>	<b>27,7</b>	<b>37,0</b>	<b>13,0</b>	<b>0,7</b>	<b>6,4</b>	<b>6,4</b>	<b>0,2</b>	<b>1,1</b>
<b>Southern Province</b>	<b>603 800</b>	<b>100</b>	<b>0,2</b>	<b>3,4</b>	<b>14,5</b>	<b>57,4</b>	<b>12,7</b>	<b>0,0</b>	<b>5,3</b>	<b>5,6</b>	<b>0,0</b>	<b>0,9</b>
<b>Kamonyi district</b>	<b>80 468</b>	<b>100</b>	<b>0,1</b>	<b>1,4</b>	<b>15,5</b>	<b>55,1</b>	<b>11,8</b>	<b>0,1</b>	<b>6,0</b>	<b>8,9</b>	<b>0,0</b>	<b>1,1</b>
Gacurabwenge	6 470	100	0,1	1,8	17,2	61,3	10,0	0,0	2,5	6,2	0,0	1,0
Karama	4 367	100	0,0	0,4	0,8	77,7	12,3	0,0	1,7	6,1	0,0	0,8
Kayenzi	5 346	100	0,0	0,4	3,0	77,8	11,8	0,1	2,9	2,9	0,0	1,1
Kayumbu	3 787	100	0,1	0,4	8,8	62,1	15,1	0,0	4,9	7,2	0,0	1,4
Mugina	9 364	100	0,1	1,2	27,4	47,8	6,9	0,0	3,3	12,4	0,1	0,9
Musambira	7 914	100	0,2	1,2	12,9	48,9	17,0	0,2	3,0	15,3	0,0	1,4
Ngamba	3 242	100	0,0	0,3	30,0	42,1	8,5	0,0	16,9	0,0	0,0	2,1
Nyamiyaga	9 293	100	0,1	0,5	6,3	61,0	14,5	0,1	7,3	9,5	0,0	0,8
Nyarubaka	6 015	100	0,0	0,2	7,8	54,5	7,5	0,1	8,0	20,9	0,1	0,8
Rugarika	8 510	100	0,0	0,9	4,9	60,8	7,8	0,1	12,5	12,1	0,0	0,9
Rukoma	7 888	100	0,2	2,1	39,2	41,1	13,4	0,2	2,1	0,5	0,0	1,1
Runda	8 272	100	0,1	5,8	20,6	41,0	16,0	0,1	9,0	6,2	0,0	1,2

Source: Rwanda 4<sup>th</sup> Population and Housing Census, 2012 (NISR)

Table 55: Distribution (count and %) of private households in Kamonyi district by main type of sanitation facilities and by Sector of residence

Sectors	Total number of private households	Improved sanitation	Unimproved sanitation	Not stated
<b>Rwanda</b>	<b>2 424 898</b>	<b>95,6</b>	<b>2,6</b>	<b>1,7</b>
<b>Southern Province</b>	<b>603 800</b>	<b>95,8</b>	<b>3,0</b>	<b>1,3</b>
<b>Kamonyi district</b>	<b>80 468</b>	<b>97,3</b>	<b>1,7</b>	<b>1,0</b>
Gacurabwenge	6 470	97,5	1,4	1,1
Karama	4 367	98,2	1,0	0,8
Kayenzi	5 346	98,1	1,2	0,7
Kayumbu	3 787	96,5	1,6	2,0
Mugina	9 364	97,0	2,4	0,6
Musambira	7 914	96,1	2,6	1,2
Ngamba	3 242	96,9	1,8	1,3
Nyamiyaga	9 293	97,4	1,8	0,8
Nyarubaka	6 015	98,0	1,2	0,8
Rugarika	8 510	97,7	1,6	0,7
Rukoma	7 888	97,2	1,5	1,3
Runda	8 272	97,0	1,7	1,4



