



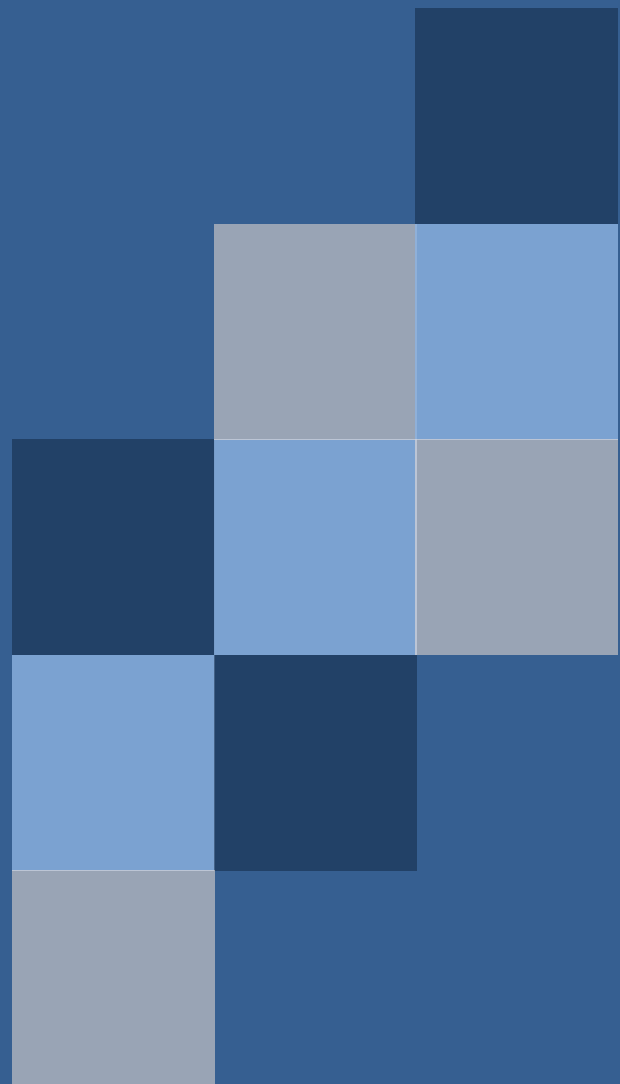
THE REPUBLIC OF RWANDA



Fourth Population and Housing Census, Rwanda, 2012

District Profile

Gatsibo





THE REPUBLIC OF RWANDA



Ministry of Finance and Economic Planning
National Institute of Statistics of Rwanda

Fourth Population and Housing Census, Rwanda, 2012

District Profile Gatsibo

January 2015



The Fourth Rwanda Population and Housing Census (2012 RPHC) was implemented by the National Institute of Statistics of Rwanda (NISR). Field work was conducted from August 16th to 30th, 2012. The funding for the RPHC was provided by the Government of Rwanda, World Bank (WB), the UKAID (Former DFID), European Union (EU), One UN, United Nations Population Fund (UNFPA), United Nations Development Programme (UNDP), United Nations Children's Fund (UNICEF) and UN Women.

Additional information about the 2012 RPHC may be obtained from the NISR:
P.O. Box 6139, Kigali, Rwanda; Telephone: (250) 252 571 035
E-mail: info@statistics.gov.rw; Website: <http://www.statistics.gov.rw>.

Recommended citation:

National Institute of Statistics of Rwanda (NISR), Ministry of Finance and Economic Planning (MINECOFIN) [Rwanda]; 2012. Rwanda Fourth Population and Housing Census.

District Profile: Gatsibo

Foreword

The undertaking of Population Censuses in Rwanda goes back to the year 1978 where the first ever Census was implemented. The second and third censuses were carried out in 1991 and 2002. The 2012 Census marks the Fourth in the series. It is undoubtedly that Census information, particularly if made available on a regular basis, is indispensable for planning, policy development, evaluation and for research purposes.

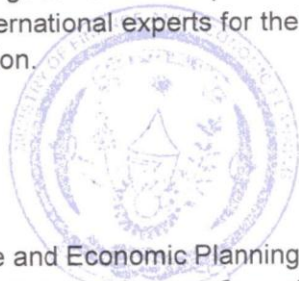
The final results of the 2012 Census are published in the form of statistical tables and analytical thematic reports. Generally, the results provide population counts down to the lowest administrative level, as well as demographic and socioeconomic indicators at both national and district levels. I recommend that such invaluable information contained in the census results be used as updated benchmarks for all development planning, and in monitoring and evaluation of Rwanda's development goals.

On this occasion, I would like to seize this opportunity to thank His Excellency the President of the Republic of Rwanda for his direct support to the census, the Government of Rwanda and development partners for providing the required resources for conducting the 2012 Census. Special gratitude goes to One UN, the European Union (EU), the United Nations Population Fund (UNFPA), the World Bank (WB), the United Kingdom AID (UKAID-formerly DFID), UN Women and UNICEF.

I would also like to thank all members of the National Census Commission and the Census Technical Committee for their able guidance of the entire Census operation. The National Institute of Statistics of Rwanda (NISR) deserves special appreciation for the successful implementation of this huge statistical undertaking and releasing the final results on time.

Special gratitude goes to all respondents, field staff from NISR and other government institutions and international experts for their sincere cooperation and dedication to successfully complete the mission.


Claver GATETE



Minister of Finance and Economic Planning, and
Chairperson of the National Census Commission

Acknowledgment

The National Institute of Statistics of Rwanda (NISR) is pleased to release the final results of the Fourth Population and Housing Census (PHC4). The execution of different Census phases: preparatory works, data collection, data processing, tabulation and data analysis continued for about four years -- between 2010 and 2013.

NISR has published several Census analytical reports to be of direct help to policy makers, planners, local authorities and other users. The reports have dealt with several issues from population size and distribution, education, settlement, labour, population projections to mention but a few. NISR hopes that the analytical reports would meet the demand of Census data users at central and local levels.

On this occasion, I would like to pay our sincere gratitude to the President of the Republic of Rwanda for the Presidential Decree No. 02/01 of 07/02/2011 organizing the 4th Population and Housing Census and the Minister of Finance and Economic Planning the Chairperson of the National Census Commission for the Ministerial Order No. 001/12/10/TC of 19/01/2012 determining the administrative structure and technical organization of the 2012 Population and Housing Census. These legal instruments laid a solid foundation for all activities that followed without which not much could be achieved.

I also take this opportunity to thank the National Census Commission, the Branches of the Commission at Province and District levels and the Census Technical Committee whose invaluable guidance and advice enabled carrying out Census operations in a highly professional and timely manner.

My greatest gratitude extends to the Government of Rwanda and development partners for availing logistical and technical support.

Special recognition goes to the Ministries of Defense, Local Government, Education, Internal Security, Foreign Affairs, the National Police and National Correctional Services for the direct involvement in field data collection operations.

I also wish to express my appreciation to the local government authorities and NISR staff for their excellent operational organization and to the tens of thousands of enumerators and supervisors for their painstaking efforts throughout the data collection phase.

Finally, the people of Rwanda, residents and visitors your cooperation was crucial for the success of the census. Thank you.


MURANGWA Yusef

Director General,
National Institute of Statistics of Rwanda



Table of Content

Foreword.....	i
Acknowledgements.....	iii
LIST OF TABLES.....	vii
LIST OF FIGURES.....	xi
Chapter 1: Population Size, Spatial Distribution, and Structure.....	1
1.1. Size and Spatial Distribution of the Population	1
1.1.1 Size and Spatial Distribution of the Population of the Eastern Province.....	1
1.1.2 Size and Spatial Distribution of the Population of Gatsibo district.....	3
1.1.3 Size and Spatial Distribution of the Population of Gatsibo district by residence area	5
1.1.4 Size and Spatial Distribution of the Population of Gatsibo district.....	6
Chapter 2: Characteristics of the population	9
2.1. Socio-cultural characteristics of the population	9
2.2. Marital Status.....	11
2.3. Educational Characteristics of the Population.....	13
2.4. Economic Activity Characteristics of the Population	18
Chapter 3: Sub-Population	21
3.1. Children (0-17 years).....	21
3.2. Youth (14-35 years).....	26
3.3. Persons with Disabilities	31
3.4. Elderly Population	32
Chapter 4: Households and Housing Characteristics	35
4.1. Households Characteristics.....	35
4.2. Housing Characteristics.....	37
ANNEXES	59

LIST OF TABLES

Table 1: Distribution (count) of resident population of Eastern Province in 2012 by District, Sex and Density	1
Table 2: Distribution (count) of resident population of Gatsibo district in 2012 by Sector, Sex and Density.....	3
Table 3: Distribution (count and %) of resident population of Gatsibo district by Sector and Area of Residence.	5
Table 4: Distribution (count and %) of resident population of Gatsibo district by 5-year age group and sex.....	6
Table 5: Number and population share (%) of some specific interventions targeted groups in Gatsibo district by sex.....	8
Table 6: Distribution (count and %) of resident population of Gatsibo district by Nationality and Sector	9
Table 7: Distribution (count and %) of resident population of Gatsibo district by Religious Affiliation and residence areas.....	10
Table 8: Distribution (%) of resident population of Gatsibo district aged 12 years and above by Marital status and Sector	11
Table 9: Distribution (%) of resident population of Gatsibo district aged 12 years and above by marital status, Age groups and Sex [Both sexes]	12
Table 10: Distribution (count and %) of the school-age population of Gatsibo district by Sector and by School attendance status and Sex (Both sexes)	13
Table 11: Gross and Net Attendance Rate (%) in Primary School of Gatsibo district by Sex and Sector	15
Table 12: Gross and Net Attendance Rate (%) in Secondary School of Gatsibo district by Sex and Sector	16
Table 13: Distribution (count and %) of resident population of Gatsibo district aged 3 years and above by Highest level of educational attainment and Sector (Both sexes)..	17
Table 14: Labour-force participation rate (%) among the resident population aged 16 years and above by sex, Eastern Province, District and area of residence.....	18
Table 15: Unemployment rate (%) among the active population aged 16 years and above in Eastern Province by sex, District and area of residence.	20
Table 16: Number and share (%) of children aged 0-17 years among the total resident population of Gatsibo district by sex and sector of residence.....	21
Table 17: Percentage of the children aged 0-17 in Eastern Province whose birth was registered by sex, District and area of residence	22
Table 18: Percentage of the children aged 0-17 in Gatsibo district whose birth was registered by sex, Sector and area of residence.....	23
Table 19: Percentage of children aged 5-17 years currently employed by age group and sex and by district	24
Table 20: Percentage of children aged 5-17 years currently employed by age group and sex and by sector in Gatsibo district.....	25
Table 21: Number and share (%) of the resident youth aged 14-35 years among the total resident population of Gatsibo district by Sector of residence and sex (Both sexes)	26
Table 22: Distribution (count and %) of the resident youth of Gatsibo district aged 14-35 years by Sector of residence and school attendance status (Both sexes).....	27

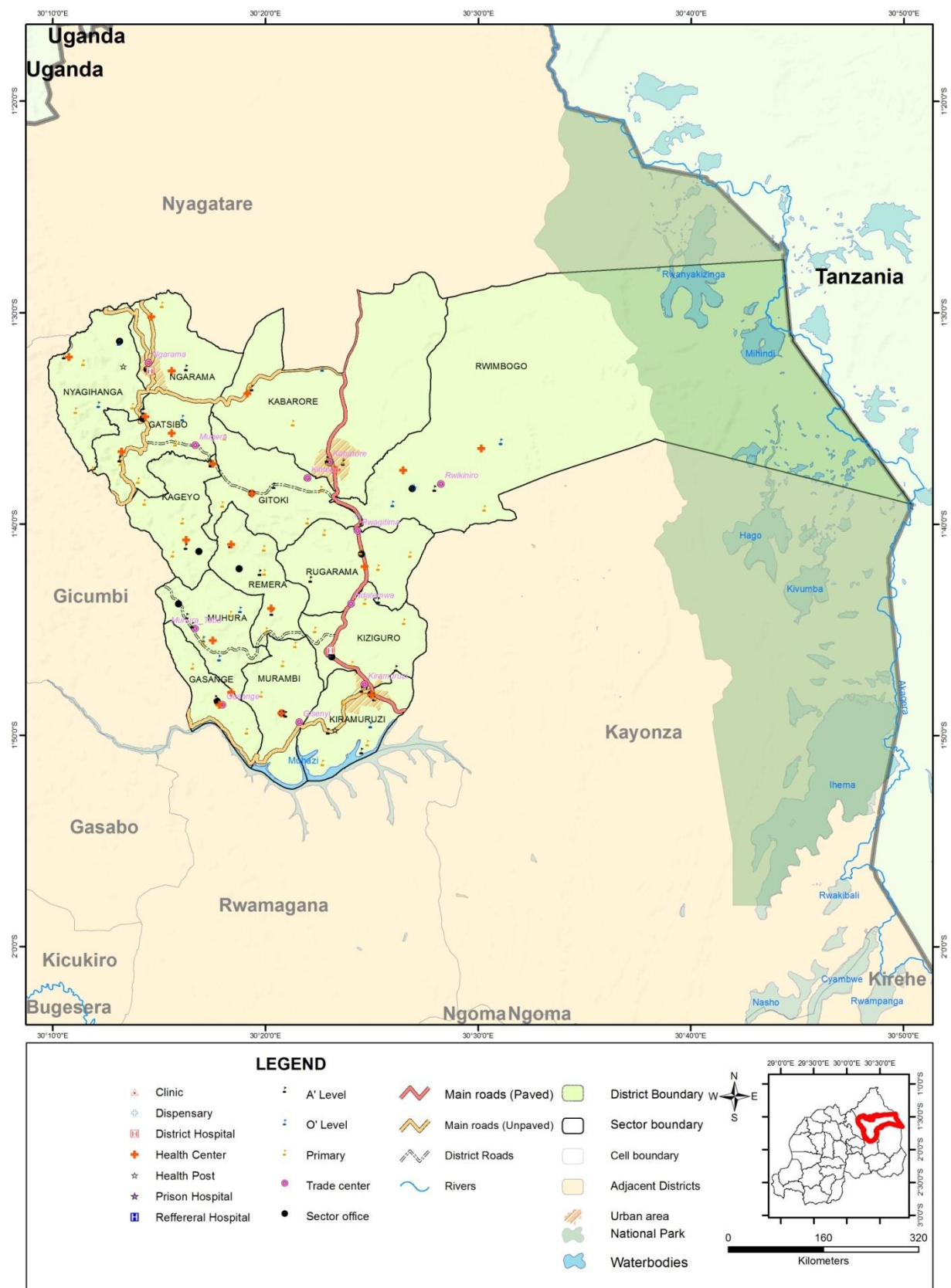
Table 23: Distribution (count and %) of the youth population of Gatsibo district aged 14-35 years by Sector of residence and highest level of education attained (Both sexes)	28
Table 24: Distribution (count and %) of the resident youth in Gatsibo district aged 14 - 35 years by economic activity status and sex, and by sector residence	29
Table 25: Distribution (%) of the currently employed youth of Gatsibo district aged 14-35 years by employment status and sex	30
Table 26: Number and share (%) of persons with disabilities of Gatsibo district aged 5 years and above (Prevalence of disabilities) by Sector of residence and sex	31
Table 27: Number and share (%) of the resident elderly (aged 60 years and above) among the total resident population of Gatsibo district by Sector of residence and sex ..	32
Table 28: Distribution (count and %) of the elderly resident (aged 60 years and above) by economic activity status and sex, and by sector of residence	33
Table 29: Distribution (%) of the elderly resident (aged 60 years and above) of Gatsibo district by sector of residence and marital status (Both sexes)	34
Table 30: Number of private households of Gatsibo district and their corresponding population by Sector and mean size of private households.....	35
Table 31: Distribution (count and %) of private households' heads of Gatsibo district by Sector and sex.....	36
Table 32: Distribution (count and %) of private households of Gatsibo district by type of habitat and Sector.....	37
Table 33: Distribution (%) of private households of Gatsibo district by tenure of the housing units and by Sector	39
Table 34: Distribution (count and %) of private households of Gatsibo district by main material of the roof of the housing units and by Sector	41
Table 35: Distribution (count and %) of private households of Gatsibo district by main material of the walls of the housing unit and by Sector	43
Table 36: Distribution (count and %) of private households of Gatsibo district by main source of energy for lighting and by Sector	45
Table 37: Distribution (count and %) of private households of Gatsibo district by main source of energy for cooking and by Sector.	47
Table 38: Distribution (count and %) of private households of Gatsibo district by main source of water and by Sector	49
Table 39: Distribution (count and %) of private households of Gatsibo district by main type of toilet facility and by Sector	52
Table 40: Distribution (count and %) of private households of Gatsibo district by mode of waste disposal and by Sector	54
Table 41: Percentage of private households of Gatsibo district possessing communication assets by Sector	56
Table 42: Percentages of private households of Gatsibo district that have access to the internet by place of access and by Sector.....	57
Table 43: Distribution (count and %) of resident population of Gatsibo district by Single age and Sex	59
Table 44: Distribution (count and %) of resident population of Gatsibo district by 5-year age group and sex.....	62
Table 45: Distribution (%) of resident population of Gatsibo district aged 12 years and above by Marital status, Sector and Sex [Male].....	76

Table 46: Distribution (%) of resident population of Gatsibo district aged 12 years and above by Marital status, Sector and Sex [Female].....	77
Table 47: Distribution (%) of resident population of Gatsibo district aged 12 years and above by Marital status, Age groups and Sex [Male, Female]	78
Table 48: Distribution (count and %) of the school-age population of Gatsibo district by Sector and by School attendance status and Sex (Male)	80
Table 49: Distribution (count and %) of the school-age population of Gatsibo district by Sector and by School attendance status and Sex (Female)	82
Table 50: Distribution (%) of resident population of Gatsibo district aged 3 years and above by Highest level of educational attainment and Sector (Male)	84
Table 51: Distribution (%) of resident population of Gatsibo district aged 3 years and above by Highest level of educational attainment and Sector (Female).....	85
Table 52: Distribution (%) of resident population of Gatsibo district aged 16 years and above residing in private households by Economic activity status and Sector (Both Sex).....	86
Table 53: Distribution (%) of resident population of Gatsibo district aged 16 years and above residing in private households by Economic activity status and Sector (Male)	87
Table 54: Distribution (%) of resident population of Gatsibo district aged 16 years and above residing in private households by Economic activity status and Sector (Female)	88
Table 55: Distribution (count and %) of the private households of the District of Gatsibo by main source of water supply and Sector	89
Table 56: Distribution of private households in Gatsibo district by type of sanitation facilities and area of residence	90

LIST OF FIGURES

Figure 1: Administrative map of Gatsibo district	xii
Figure 2: Population Density (Inhabitants per square km) by district in Eastern Province.....	2
Figure 3: Population Density of Gatsibo district by Sector in 2012.....	4
Figure 4: Age pyramid of resident population of Gatsibo district in 2012	7
Figure 5: Labour-force participation rate (LFPR) among the resident population aged 16 years and above in Gatsibo district by age and sex.	19
Figure 6: Employed among children aged 5 years and above in Gatsibo district.....	24
Figure 7: Distribution (%) of private households of Gatsibo district by type of habitat and by Area of residence	38
Figure 8: Distribution (%) of private households of Gatsibo district by tenure of the housing and area of residence.....	40
Figure 9: Distribution (%) of private households of Gatsibo district by main material of the roof and of the housing unit and by area of residence.....	42
Figure 10: Distribution (%) of private households of Gatsibo district by main material of the walls of the housing unit and by area of residence.....	44
Figure 11: Distribution (%) of private households of Gatsibo district by main source of energy for lighting and by area of residence	46
Figure 12: Distribution (%) of private households of Gatsibo district by main source of energy for cooking and by area of residence	48
Figure 13: Distribution (%) of private households of Gatsibo district by improved and unimproved source of water and by Sector.....	50
Figure 14: Distribution (%) of private households of Gatsibo district by main source of water and by area of residence	51
Figure 15: Distribution (%) of private households of Gatsibo district by main type of toilet facility and by area of residence	53
Figure 16: Distribution (%) of private households of Gatsibo district by mode of waste disposal and by area of residence	55
Figure 17: Percentage of private households whose at least one member have access to the Internet from home, office/school, cyber café and other by area of residence.....	58

Figure 1: Administrative map of Gatsibo district



Source: Rwanda 4th Population and Housing Census, 2012 (NISR)

Chapter 1: Population Size, Spatial Distribution, and Structure

1.1. Size and Spatial Distribution of the Population

1.1.1 Size and Spatial Distribution of the Population of the Eastern Province

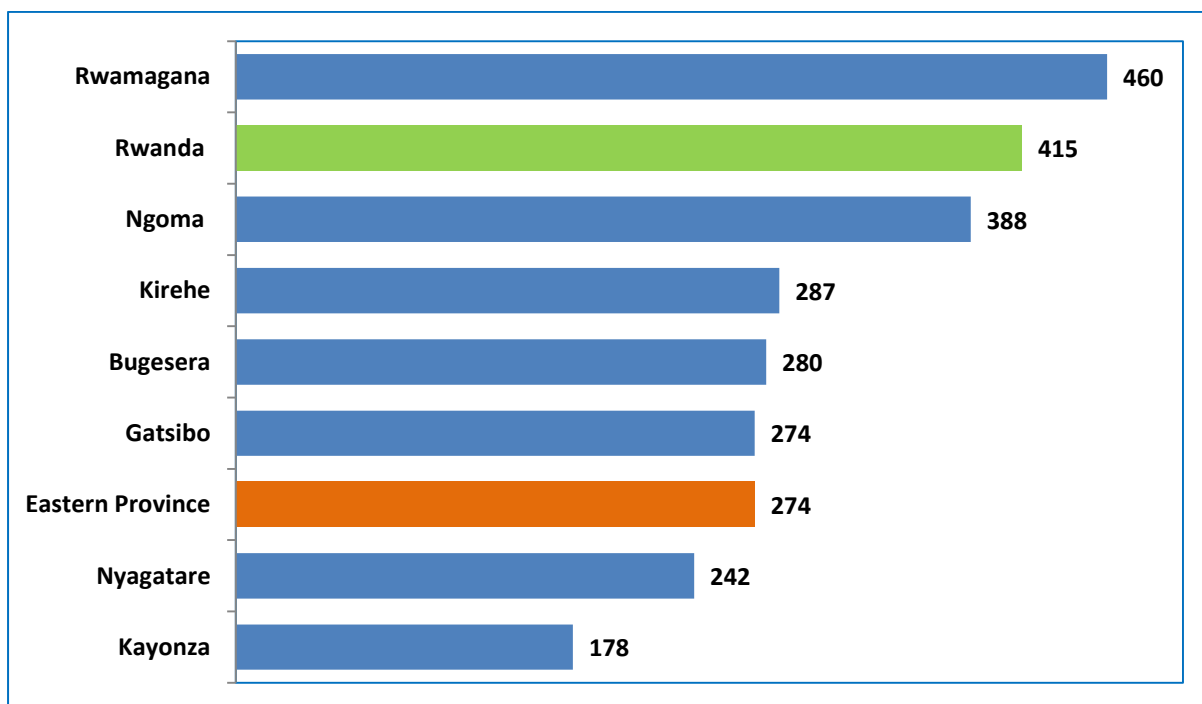
Table 1: Distribution (count) of resident population of Eastern Province in 2012 by District, Sex and Density

Districts	Both sexes	Male	Female	% of female	Population share (% of the total population)	Density (Inhabitants per square km)
Rwanda	10,515,973	5,064,868	5,451,105	51.8		415
Eastern Province	2,595,703	1,258,090	1,337,613	51.5	100	274
Rwamagana	313,461	153,607	159,854	51.0	12.1	460
Nyagatare	465,855	228,325	237,530	51.0	17.9	242
Gatsibo	433,020	207,669	225,351	52.0	16.7	274
Kayonza	344,157	166,720	177,437	51.6	13.3	178
Kirehe	340,368	163,790	176,578	51.9	13.1	287
Ngoma	336,928	161,769	175,159	52.0	13.0	388
Bugesera	361,914	176,210	185,704	51.3	13.9	280

Source: Rwanda 4th Population and Housing Census, 2012 (NISR)

- The 4th Rwanda Population and Housing Census (PHC4) has enumerated 2,595,703 residents in the Eastern Province, which represent 25% of the total population of Rwanda (10,515,973 residents).
- The population of the Eastern Province is predominantly female: 1,337,613 are women corresponding to 51.5% of the total population of the Eastern province.
- Nyagatare and Gatsibo are the mostly populated Districts with more than 400 thousands residents for each. Their populations represent, respectively, 17.9% and 16.7% of the total resident population of the Eastern Province.
- The least populated district is Rwamagana with about 313 thousand inhabitants, corresponding to 12.1% of the total resident population of the Eastern Province.
- Two districts with high population density (Inhabitants per km²) are Rwamagana (460 inhabitants by km²) and Ngoma (388 inhabitants by km²)
- Three districts with low population density (Inhabitants per Sq.km) are Kayonza (178 inhabitants by km²), Nyagatare (242 inhabitants by km²) and Gatsibo (274 inhabitants by km²)

Figure 2: Population Density (Inhabitants per square km) by district in Eastern Province



Source: Rwanda 4th Population and Housing Census, 2012 (NISR)

1.1.2 Size and Spatial Distribution of the Population of Gatsibo district

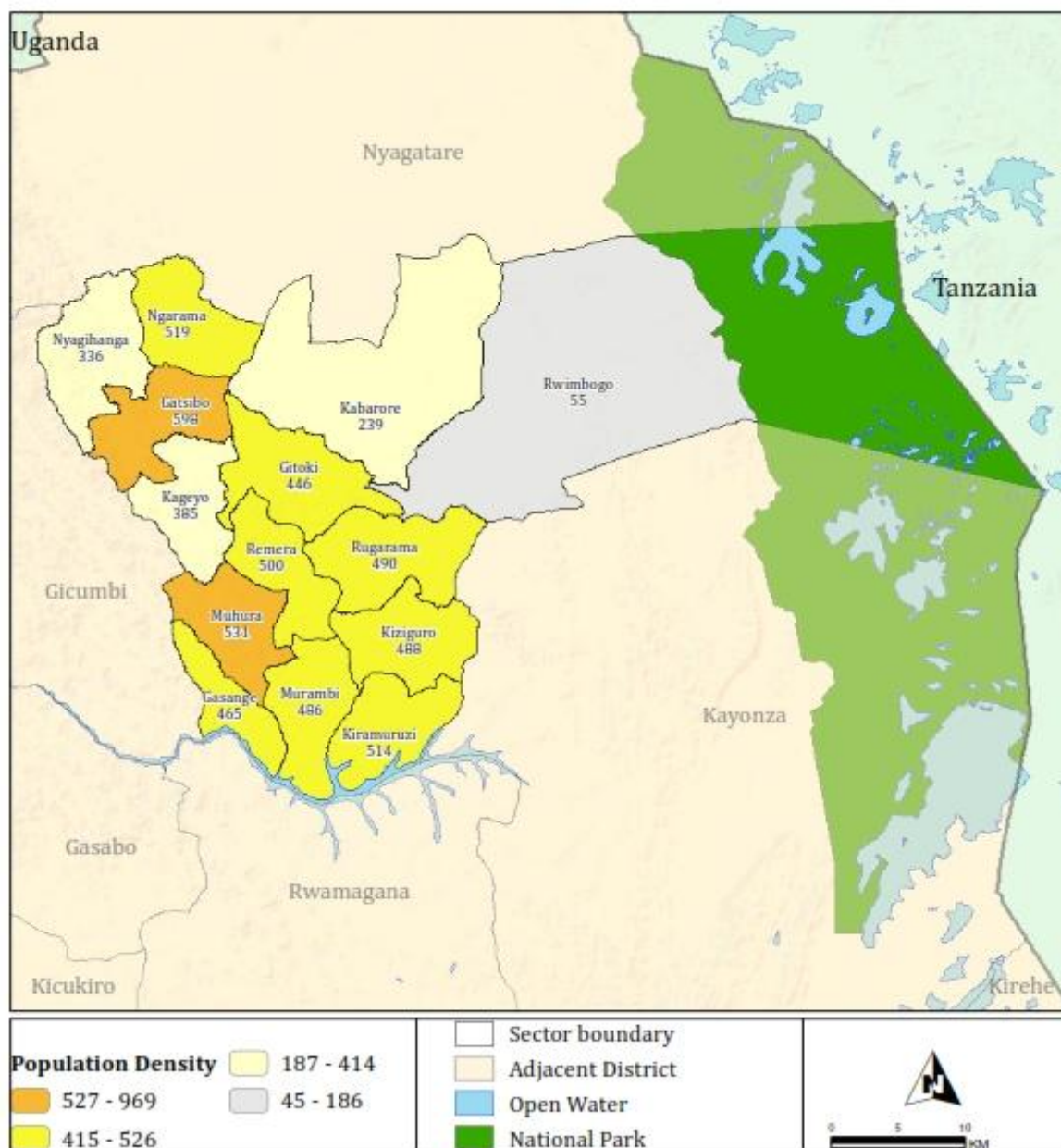
Table 2: Distribution (count) of resident population of Gatsibo district in 2012 by Sector, Sex and Density

Sectors	Both sexes	Male	Female	% of female	Population share (% of the total population)	Density (Inhabitants per km ²)
Rwanda	10,515,973	5,064,868	5,451,105	51.8		415
Eastern Province	2,595,703	1,258,090	1,337,613	51.5		274
Gatsibo district	433,020	207,669	225,351	52.0	100	274
Gasange	17,783	8,537	9,246	52.0	4.1	465
Gatsibo	36,690	17,496	19,194	52.3	8.5	598
Gitoki	33,409	15,836	17,573	52.6	7.7	446
Kabarore	50,288	24,842	25,446	50.6	11.6	239
Kageyo	21,567	10,332	11,235	52.1	5.0	385
Kiramuruzi	31,083	14,803	16,280	52.4	7.2	514
Kiziguro	29,996	14,280	15,716	52.4	6.9	488
Muhura	29,568	14,139	15,429	52.2	6.8	531
Murambi	29,032	13,642	15,390	53.0	6.7	486
Ngarama	30,354	14,423	15,931	52.5	7.0	519
Nyagihanga	24,159	11,548	12,611	52.2	5.6	336
Remera	26,110	12,429	13,681	52.4	6.0	500
Rugarama	37,029	17,867	19,162	51.7	8.6	490
Rwimbogo	35,952	17,495	18,457	51.3	8.3	55

Source: Rwanda 4th Population and Housing Census, 2012 (NISR)

- The 4th Rwanda Population and Housing Census (PHC) has enumerated 433,020 residents in Gatsibo District, which represent 16.7% of the total population of Eastern Province (2,595,703 residents).
- The population of Gatsibo district is predominantly female 225,351 are women corresponding to 52% of the total population.
- Females are predominant in almost all Sectors of the District.
- Kabarore is the most populated Sectors with over 50 thousands residents each. It represents 11.6% of the total population of District.
- The two less populated sectors are Gasange (17 thousand inhabitants) and Kageyo (21 thousands inhabitants). They represent 4.1% and 5.0% of the total resident population of Gatsibo District, respectively.

Figure 3: Population Density of Gatsibo district by Sector in 2012



Source: Rwanda 4th Population and Housing Census, 2012 (NISR)

1.1.3 Size and Spatial Distribution of the Population of Gatsibo district by residence area

Table 3: Distribution (count and %) of resident population of Gatsibo district by Sector and Area of Residence.

District / Sectors	Count			%		
	Total	Urban	Rural	Total	Urban	Rural
Rwanda	10,515,973	1,737,684	8,778,289	100	16.5	83.5
Eastern Province	2,595,703	186,466	24,09,237	100	7.2	92.8
Gatsibo District	433,020	23,914	409,106	100	5.5	94.5
Gasange	17,783	0	17,783	100	0.0	100
Gatsibo	36,690	0	36,690	100	0.0	100
Gitoki	33,409	0	33,409	100	0.0	100
Kabarore	50,288	8,933	41,355	100	17.8	82.2
Kageyo	21,567	0	21,567	100	0.0	100
Kiramuruzi	31,083	8,432	22,651	100	27.1	72.9
Kiziguro	29,996	1,041	28,955	100	3.5	96.5
Muhura	29,568	0	29,568	100	0.0	100
Murambi	29,032	0	29,032	100	0.0	100
Ngarama	30,354	5,508	24,846	100	18.1	81.9
Nyagihanga	24,159	0	24,159	100	0.0	100
Remera	26,110	0	26,110	100	0.0	100
Rugarama	37,029	0	37,029	100	0.0	100
Rwimbogo	35,952	0	35,952	100	0.0	100

Source: Rwanda 4th Population and Housing Census, 2012 (NISR)

- Gatsibo district population is predominantly rural with 94.5% of its population (433,020 inhabitants) lives in rural areas.
- 27.1% of the population of Gatsibo district resides in urban areas. Ten of fourteen sectors in Gatsibo district are entirely rural.

1.1.4 Size and Spatial Distribution of the Population of Gatsibo district

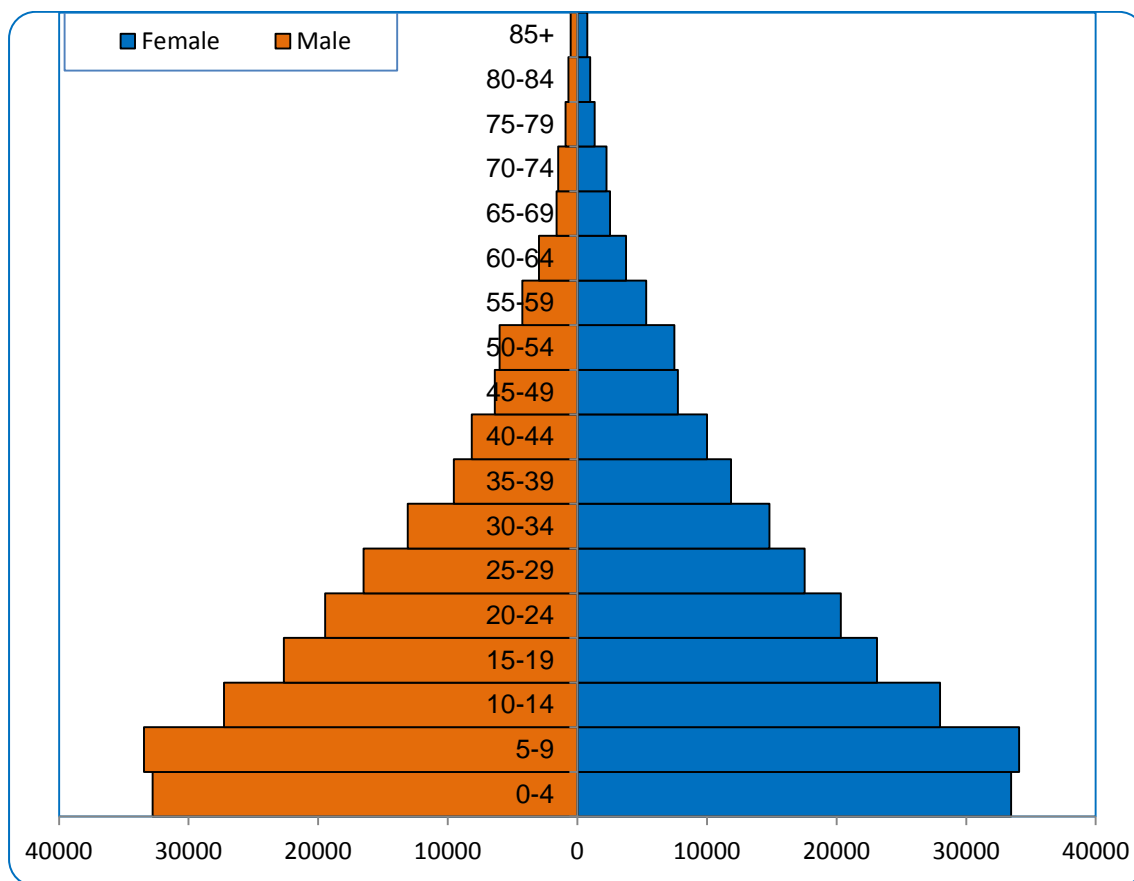
Table 4: Distribution (count and %) of resident population of Gatsibo district by 5-year age group and sex

5-year age group	Count			%		
	Both sexes	Male	Female	Both sexes	Male	Female
Total	433,020	207,669	225,351	100	100	100
0-4	66,252	32,777	33,475	15.3	15.8	14.9
5-9	67,521	33,444	34,077	15.6	16.1	15.1
10-14	55,262	27,279	27,983	12.8	13.1	12.4
15-19	45,778	22,649	23,129	10.6	10.9	10.3
20-24	39,788	19,460	20,328	9.2	9.4	9.0
25-29	34,051	16,506	17,545	7.9	7.9	7.8
30-34	27,907	13,097	14,810	6.4	6.3	6.6
35-39	21,378	9,529	11,849	4.9	4.6	5.3
40-44	18,150	8,145	10,005	4.2	3.9	4.4
45-49	14,145	6,380	7,765	3.3	3.1	3.4
50-54	13,472	5,996	7,476	3.1	2.9	3.3
55-59	9,546	4,243	5,303	2.2	2.0	2.4
60-64	6,728	2,969	3,759	1.6	1.4	1.7
65-69	4,115	1,602	2,513	1.0	0.8	1.1
70-74	3,741	1,485	2,256	0.9	0.7	1.0
75-79	2,228	903	1,325	0.5	0.4	0.6
80-84	1,671	684	987	0.4	0.3	0.4
85+	1,287	521	766	0.3	0.3	0.3

Source: Rwanda 4th Population and Housing Census, 2012, (NISR)

- Gatsibo population is mostly young. 63.5% of resident population of Gatsibo district is under 25 years old, as shown by the age pyramid (Figure 4), reflecting the high level of fertility in the recent past.
- The elderly (60 years and above) represent 3.5% of the total population of Gatsibo district. The distribution of resident population by age and by sector is in the annex.

Figure 4: Age pyramid of resident population of Gatsibo district in 2012



Source: Rwandan 4th Population and Housing Census, 2012 (NISR)

Table 5: Number and population share (%) of some specific interventions targeted groups in Gatsibo district by sex

Intervention target groups (Age groups in years)	Population			Population share (%)		
	Total	Male	Female	Total	Male	Female
<1	12,410	6,102	6,308	2.9	1.4	1.5
<5	66,252	32,777	33,475	15.3	7.6	7.7
1-4	53,842	26,675	27,167	12.4	6.2	6.3
3-6	57,303	28,255	29,048	13.2	6.5	6.7
0-15	199,113	98,474	100,639	46.0	22.7	23.2
0-17	217,477	107,613	109,864	50.2	24.9	25.4
7-12	74,811	37,061	37,750	17.3	8.6	8.7
13-18	57,938	28,684	29,254	13.4	6.6	6.8
14 +	253,341	118,778	134,563	58.5	27.4	31.1
14-35	161,972	78,640	83,332	37.4	18.2	19.2
15-24	85,566	42,109	43,457	19.8	9.7	10.0
15-49 (Female)			105,431			24.3
16-64	220,865	104,000	116,865	51.0	24.0	27.0
16 +	233,907	109,195	124,712	54.0	25.2	28.8
18 +	215,543	100,056	115,487	49.8	23.1	26.7
21 +	189,334	87,121	102,213	43.7	20.1	23.6
60 +	19,770	8,164	11,606	4.6	1.9	2.7
65 +	13,042	5,195	7,847	3.0	1.2	1.8
Gatsibo District	433,020	207,669	225,351	100	48.0	52.0

Source: Rwandan 4th Population and Housing Census, 2012 (NISR)

- Some age groups are targets of specific interventions. For instance children under five year for immunization programs, children in primary school age (7-12 years), people in the official working age group (16-64 years), etc.
- Knowing the size of such groups is of great importance for the design, implementation, monitoring and evaluation of programs targeting such groups. The above table gives the size of the main interventions target groups by sex, and their share in the retire population of Gatsibo district.
- The population aged 0-17 represents 50.2% of the total population of the district. The economically active population aged 16-64 years represents 51.0%.

Chapter 2: Characteristics of the population

2.1. Socio-cultural characteristics of the population

Table 6: Distribution (count and %) of resident population of Gatsibo district by Nationality and Sector

Sectors	Count				Percentage			
	Total	Rwanda	Foreigners	Not stated	Total	Rwanda	Foreigners	Not stated
Rwanda	10,515,973	10,416,164	87,346	12,463	100	99.1	0.8	0.1
Eastern Province	2,595,703	2,573,647	20,456	1,600	100	99.2	0.8	0.1
Gatsibo district	433,020	421,296	11,480	244	100	97.3	2.7	0.1
Gasange	17,783	17,767	0	16	100	99.9	0.0	0.1
Gatsibo	36,690	25,578	11,088	24	100	69.7	30.2	0.1
Gitoki	33,409	33,377	19	13	100	99.9	0.1	0.0
Kabarore	50,288	50,134	132	22	100	99.7	0.3	0.0
Kageyo	21,567	21,548	9	10	100	99.9	0.0	0.0
Kiramuruzi	31,083	31,011	47	25	100	99.8	0.2	0.1
Kiziguro	29,996	29,912	72	12	100	99.7	0.2	0.0
Muhura	29,568	29,552	7	9	100	99.9	0.0	0.0
Murambi	29,032	29,010	3	19	100	99.9	0.0	0.1
Ngarama	30,354	30,316	26	12	100	99.9	0.1	0.0
Nyagihanga	24,159	24,151	2	6	100	100	0.0	0.0
Remera	26,110	26,080	3	27	100	99.9	0.0	0.1
Rugarama	37,029	37,000	19	10	100	99.9	0.1	0.0
Rwimbogo	35,952	35,860	53	39	100	99.7	0.1	0.1

Source: Rwandan 4th Population and Housing Census, 2012 (NISR)

- Gatsibo district hosts few foreigners; only 11,480 out of 433,020 residents are foreigners, who represent 2.7% of the total resident population of Gatsibo district.

Table 7: Distribution (count and %) of resident population of Gatsibo district by Religious Affiliation and residence areas

District	Count			Percentage		
	Total	Urban	Rural	Total	Urban	Rural
Rwanda	10,515,973	1,737,687	8,778,289			
Eastern Province	2,595,703	186,466	2,409,237			
Gatsibo district	433,020	23,914	409,106	100	100	100
Catholic	172,734	6,970	165,764	39.9	29.1	40.5
Protestant	190,322	10,947	179,375	44.0	45.8	43.8
Adventist	25,039	1,849	23,190	5.8	7.7	5.7
Muslim	15,719	3,027	12,692	3.6	12.7	3.1
Jehovah Witness	3,755	330	3,425	0.9	1.4	0.8
Traditional/Animist	79	1	78	0.0	0.0	0.0
Non Religion	11,880	543	11,337	2.7	2.3	2.8
Other	860	49	811	0.2	0.2	0.2
Not stated	12,632	198	12,434	2.9	0.8	3

Source: Rwandan 4th Population and Housing Census, 2012 (NISR)

- Christianity is the predominant religion in Gatsibo district with more than 90.6%, being Protestant (44%), Catholic (39.9%), or Adventist (5.8%) and Jehovah Witness for 0.9%,
- Muslims represent 3.6% of the resident population,
- 2.7% of Gatsibo resident population declared to be without religion.

2.2. Marital Status

Table 8: Distribution (%) of resident population of Gatsibo district aged 12 years and above by Marital status and Sector

District / Sectors	Total (count)	Total (%)	Never married	Currently Married	Separated	Widowed	Divorced	Not Stated
Rwanda	6,937,678	100	45.5	46.1	0.5	6.3	1.5	0.0
Eastern Province	1,666,078	100	43.0	48.1	0.6	6.2	2.0	0.0
Gatsibo District	276,632	100	43.4	47.5	0.5	6.6	2.0	0.0
Gasange	11,111	100	42.9	48.8	0.6	6.0	1.6	0.1
Gatsibo	23,439	100	47.0	44.4	0.5	6.4	1.7	0.0
Gitoki	20,887	100	39.4	50.7	0.9	6.7	2.2	0.0
Kabarore	32,102	100	45.9	46.1	0.5	5.5	1.9	0.1
Kageyo	13,710	100	38.9	52.3	0.5	6.4	1.9	0.0
Kiramuruzi	20,416	100	48.3	40.7	0.5	7.6	2.8	0.1
Kiziguro	19,637	100	48.3	41.9	0.4	7.5	1.8	0.0
Muhura	18,890	100	42.4	49.4	0.4	6.0	1.8	0.0
Murambi	18,286	100	41.2	48.2	0.4	8.3	1.9	0.0
Ngarama	19,238	100	39.6	51.5	0.5	6.0	2.3	0.1
Nyagihanga	15,987	100	41.1	50.5	0.6	5.8	2.0	0.0
Remera	16,515	100	40.9	48.8	0.6	8.1	1.6	0.0
Rugarama	23,781	100	44.2	46.1	0.5	7.3	2.0	0.0
Rwimbogo	22,633	100	43.1	49.7	0.4	4.8	1.9	0.1

Source: Rwanda 4th Population and Housing Census, 2012 (NISR)

- Near half of resident population of Gatsibo district aged 12 and above (47.5%) was married at the time of the census, while 43.4% was never married. Up to 6.6% were widowed, while separated and divorced are relatively few (0.5% and 2%, respectively).
- At the sector level,
 - Two sectors have high percentages of the currently married people Kageyo (52.3%) and Ngarama sectors (51.5%),
 - Murambi and Kiramuruzi sector is having highest percentage of the never married persons (48.3%),
 - Murambi 8.3% and Remera 8.1% sectors have the high percentage of widowed persons.

Details of resident population of Gatsibo district aged 12 years and above by marital status and sex is presented in the annex.

Table 9: Distribution (%) of resident population of Gatsibo district aged 12 years and above by marital status, Age groups and Sex [Both sexes]

District / Sectors	Total (count)	Total (%)	Never married	Currently Married	Separated	Widowed	Divorced	Not Stated
Rwanda	6,937,678	100	45.5	46.1	0.5	6.3	1.5	0.0
Eastern Province	1,666,078	100	43	48.1	0.6	6.2	2.0	0.0
Gatsibo District	276,632	100	43.4	47.5	0.5	6.6	2.0	0.0
12-14	32,647	100	99.3	0.6	0.0	0.0	0.0	0.0
15-19	45,778	100	96.6	3.1	0.1	0.1	0.1	0.0
20-24	39,788	100	65.8	32.4	0.6	0.2	1.0	0.0
25-29	34,051	100	28.4	67.9	0.9	0.7	2.0	0.0
30-34	27,907	100	12.7	81.5	0.9	1.7	3.1	0.1
35-39	21,378	100	7.0	83.5	1.0	4.5	3.9	0.1
40-44	18,150	100	5.2	80.7	0.8	9.1	4.0	0.1
45-49	14,145	100	3.5	77.7	0.7	14.4	3.6	0.0
50-54	13,472	100	2.9	73.3	0.6	19.4	3.6	0.1
55-59	9,546	100	2.4	68.9	0.5	24.6	3.4	0.1
60-64	6,728	100	2.5	63.8	0.4	29.9	3.3	0.2
65-69	4,115	100	1.9	57.1	0.4	38.0	2.6	0.1
70-74	3,741	100	2.3	53.3	0.3	41.4	2.6	0.2
75-79	2,228	100	2.0	49.0	0.4	46.9	1.7	0.1
80-84	1,671	100	2.6	45.6	0.0	49.3	2.2	0.3
85+	1,287	100	4.4	36.6	0.4	56.2	1.6	0.9

Source: Rwanda 4th Population and Housing Census, 2012 (NISR)

The percentages of resident population of Gatsibo district by marital status vary by sex and age:

- The percentage of the never married persons decreases from 99.3% (age group of 12-14 years) to 4.4% (age group of 85 years and above).
- The percentage of persons currently married starts by increasing from 0.6% (age group of 12-14 years) to a maximum of 83.5% (age group of 35-39 years) before decreasing to 36.6% due mainly to widowhood.
- The percentage of divorced persons never reaches 5%, while the percentage of the separated persons is below 2% among all age groups.
- For more details on marital status and sex distribution, see annex.

2.3. Educational Characteristics of the Population

Table 10: Distribution (count and %) of the school-age population of Gatsibo district by Sector and by School attendance status and Sex (Both sexes)

	Total (Count)	Total (%)	Currently attending	No longer attending	Never attended
Pre-School Age (3-6 Years)					
RWANDA	1,280,857	100	29.8	0.6	69.6
Eastern Province	338,595	100	31.0	0.6	68.5
Gatsibo District	57,303	100	28.4	0.5	71.1
Gasange	2,377	100	18.0	0.2	81.8
Gatsibo	4,845	100	21.8	1.3	77.0
Gitoki	4,558	100	24.5	0.3	75.2
Kabarore	6,578	100	34.6	0.4	65.0
Kageyo	3,056	100	13.6	0.1	86.2
Kiramuruzi	3,948	100	40.0	1.2	58.8
Kiziguro	3,828	100	33.2	0.4	66.4
Muhura	3,878	100	20.5	0.3	79.2
Murambi	4,072	100	36.3	0.3	63.4
Ngarama	4,017	100	19.9	0.3	79.8
Nyagihanga	3,036	100	38.7	0.6	60.7
Remera	3,503	100	21.2	0.6	78.2
Rugarama	4,799	100	40.1	0.3	59.6
Rwimbogo	4,808	100	24.9	0.3	74.8
Primary School Age (7-12 Years)					
	Total (Count)	Total (%)	Currently attending	No longer attending	Never attended
Rwanda	1,712,459	100	92.5	0.9	6.6
Eastern Province	431,241	100	91.3	1.0	7.7
Gatsibo District	74,811	100	91.4	1.0	7.6
Gasange	3,441	100	87.6	1.7	10.7
Gatsibo	6,600	100	89.0	2.3	8.7
Gitoki	5,851	100	91.0	0.8	8.2
Kabarore	8,601	100	91.4	1.0	7.6
Kageyo	3,670	100	86.7	0.7	12.6
Kiramuruzi	4,819	100	95.0	1.0	4.0
Kiziguro	4,743	100	93.8	0.6	5.6
Muhura	5,529	100	89.2	1.0	9.8
Murambi	4,706	100	94.2	0.8	5.0
Ngarama	5,170	100	90.1	1.5	8.4
Nyagihanga	4,109	100	95.3	0.9	3.8
Remera	4,694	100	89.9	0.8	9.4
Rugarama	6,281	100	95.3	0.4	4.3
Rwimbogo	6,597	100	89.8	0.8	9.3

	Total (Count)	Total (%)	Currently attending	No longer attending	Never attended
Secondary School Age (13-18 Years)					
Rwanda	1,365,771	100	74.4	21.1	4.5
Eastern Province	330,724	100	74.1	20.9	5.0
Gatsibo District	57,938	100	74.7	20.5	4.8
Gasange	2,283	100	66.3	25.1	8.6
Gatsibo	5,512	100	76.0	19.6	4.4
Gitoki	4,344	100	74.7	20.8	4.5
Kabarore	6,769	100	75.0	18.9	6.0
Kageyo	2,658	100	74.1	19.6	6.3
Kiramuruzi	4,059	100	82.7	14.0	3.3
Kiziguro	4,164	100	81.1	15.6	3.3
Muhura	3,999	100	68.1	26.6	5.3
Murambi	3,462	100	72.1	23.6	4.3
Ngarama	4,080	100	69.1	26.3	4.6
Nyagihanga	3,454	100	75.9	21.0	3.1
Remera	3,242	100	76.0	19.3	4.7
Rugarama	4,957	100	78.3	17.8	4.0
Rwimbogo	4,955	100	71.7	22.4	5.9

Source: Rwanda 4th Population and Housing Census, 2012 (NISR)

School attendance among children varies across education levels:

- It is low (28.4%) for the preschool-age population (3-6 years), widespread (91.4%) for the primary school-age population (7-12 years), and low (74.7%) for the secondary school-age population (13-18 years) at the time of the census.
- School attendance varies also across the sectors:
 - For the preschool-age, it varies from 13.6% in Kageyo to 40.1% in Rugarama,;
 - For the primary school-age, it varies from 86.7% in Kageyo to 95.3% in Rugarama and Nyagihanga each.
 - For the secondary school, it varies from 66.3% in Gasange to 82.7% in Kiramuruzi.

Table 11: Gross and Net Attendance Rate (%) in Primary School of Gatsibo district by Sex and Sector

District / Sectors	Gross attendance rates				Net attendance rates			
	Both sexes	Male	Female	GPI	Both sexes	Male	Female	GPI
Rwanda	138.7	138.9	138.4	1.0	88.2	87.3	89.1	1.0
Eastern Province	137.3	137.8	136.7	1.0	86.3	85.3	87.2	1.0
Gatsibo district	138.9	139.1	138.6	1.00	86.5	85.5	87.4	1.02
Gasange	124.3	124.2	124.4	1.00	83.0	81.6	84.4	1.03
Gatsibo	138.3	134.9	141.8	1.05	86.1	85.1	87.1	1.02
Gitoki	139.9	143.0	137.0	0.96	86.5	85.9	87.1	1.01
Kabarore	137.0	137.0	137.1	1.00	84.5	83.5	85.4	1.02
Kageyo	134.0	132.0	135.9	1.03	83.5	80.9	86.1	1.06
Kiramuruzi	148.3	149.8	146.8	0.98	87.2	86.7	87.6	1.01
Kiziguro	147.3	149.3	145.4	0.97	89.8	88.6	91.0	1.03
Muhura	129.4	128.7	130.0	1.01	86.5	85.5	87.4	1.02
Murambi	140.8	141.3	140.3	0.99	87.6	86.3	88.9	1.03
Ngarama	137.1	139.6	134.8	0.97	85.3	84.6	85.9	1.02
Nyagihanga	153.8	153.4	154.2	1.01	91.3	91.1	91.6	1.01
Remera	135.9	135.8	135.9	1.00	86.3	86.1	86.6	1.01
Rugarama	145.6	144.4	146.8	1.02	89.9	88.8	91.0	1.02
Rwimbogo	132.8	134.7	131.0	0.97	83.8	82.4	85.2	1.03

Source: Rwanda 4th Population and Housing Census, 2012 (NISR)

Table 11 reveals that not all children attending primary school level are of the official age for that level (7-12 years).

- The gross attendance rates are greater than 100% in all sectors, with minor variations. The net attendance rate (NAR) in Primary school for Gatsibo district (86.5%) is between the NAR at Province and National level (86.3% and 88.2%, respectively).
- The highest net attendance rate in primary school (91.3%) is in Nyagihanga sector followed by Rugarama sector with 89.9% while the sector with the lowest NAR is Kabarore with 83.5%.

Table 12: Gross and Net Attendance Rate (%) in Secondary School of Gatsibo district by Sex and Sector

District / Sectors	Gross attendance rates				Net attendance rates			
	Both sexes	Male	Female	GPI	Both sexes	Male	Female	GPI
Rwanda	42.3	41.7	43.0	1.0	22.0	20.1	23.8	1.2
Eastern Province	38.4	38.4	38.4	1.0	18.9	17.4	20.5	1.18
Gatsibo District	35.0	35.7	34.3	1.0	18.1	16.8	19.3	1.1
Gasange	24.9	24.2	25.7	1.06	13.3	12.4	14.2	1.15
Gatsibo	39.7	42.4	37.1	0.88	23.8	24.3	23.3	0.96
Gitoki	26.8	29.0	24.8	0.86	13.6	12.5	14.6	1.17
Kabarore	38.9	40.2	37.7	0.94	19.8	18.7	20.8	1.11
Kageyo	26.2	27.0	25.4	0.94	13.0	12.9	13.1	1.02
Kiramuruzi	53.9	51.2	56.5	1.10	25.9	22.3	29.3	1.31
Kiziguro	52.6	50.8	54.3	1.07	27.0	23.6	30.3	1.28
Muhura	32.2	29.9	34.5	1.15	20.0	16.4	23.5	1.43
Murambi	27.1	27.5	26.6	0.97	12.2	10.3	14.1	1.37
Ngarama	24.4	26.3	22.7	0.86	12.6	12.3	12.9	1.05
Nyagihanga	23.7	26.7	20.9	0.78	12.1	12.3	12.0	0.98
Remera	30.1	33.3	27.0	0.81	16.0	16.6	15.4	0.93
Rugarama	42.3	42.2	42.5	1.01	20.3	18.6	22.1	1.19
Rwimbogo	30.6	31.7	29.5	0.93	15.0	14.2	15.9	1.12

Source: Rwanda 4th Population and Housing Census, 2012 (NISR)

- At the national level, school attendance at secondary level is not universal in Gatsibo District. The net and gross attendance rates in Gatsibo district are below 50% except for Kiramuruzi with 53.9% and Kiziguro with 52.6% for GAR. This means that more than half of the Rwandan children who are supposed to attend secondary school are not actually attending that level.
- There are very important variations by sector. The net attendance rate is 27% in Kiziguro sector while it is 12.6% in Ngarama sector.
- There are differences in both attendance rates (GAR and NAR) among males and females: the GAR is 35.7% for male vs 34.3% for female while the NAR is 16.8% for male vs 19.3% for female.

Table 13: Distribution (count and %) of resident population of Gatsibo district aged 3 years and above by Highest level of educational attainment and Sector (Both sexes)

Sectors	Highest level of education attained								
	Total (Count)	Total (%)	No Schooling	Pre-school	Primary	Post-Primary	Secondary	University	Not stated
Rwanda	9,618,310	100	25.5	3.5	56.7	0.8	10.8	1.9	1.0
Eastern Province	2,360,160	100	26.8	4.1	57.3	0.6	9.3	0.9	1.0
Gatsibo District	395,350	100	27.6	3.8	57.4	0.7	8.8	0.7	1.0
Gasange	16,294	100	34.8	2.1	55.2	0.5	5.5	0.4	1.5
Gatsibo	33,668	100	28.3	2.5	54.3	0.9	12.4	0.8	0.7
Gitoki	30,248	100	29.2	3.1	59.0	0.5	6.6	0.4	1.2
Kabarore	45,618	100	26.8	4.8	54.4	0.4	11.4	1.0	1.3
Kageyo	19,759	100	33.6	1.1	57.0	0.6	5.8	0.3	1.4
Kiramuruzi	28,374	100	20.6	6.0	56.8	0.9	13.3	1.4	1.1
Kiziguro	27,404	100	23.2	3.9	56.7	1.0	13.2	1.1	0.8
Muhura	27,311	100	30.4	2.0	57.5	0.7	7.7	0.7	1.0
Murambi	26,297	100	24.1	6.2	61.8	0.8	5.9	0.4	0.9
Ngarama	27,536	100	30.6	3.3	56.8	0.6	6.9	1.0	0.8
Nyagihanga	22,360	100	28.0	4.6	59.9	0.8	5.5	0.3	0.9
Remera	23,922	100	30.0	2.5	58.5	1.0	6.7	0.5	0.9
Rugarama	33,769	100	23.8	5.3	59.5	0.5	9.6	0.7	0.6
Rwimbogo	32,790	100	28.6	3.8	58.1	0.6	7.4	0.5	0.9

Source: Rwanda 4th Population and Housing Census, 2012 (NISR)

- Among the population aged 3 years and above in Gatsibo district, 27.6% of them has no education, 57.4% attained the primary level and 8.8% attained secondary level, while 0.7% attained university.
- Level of educational attainment varies across sectors and Kiramuruzi sector is having the highest proportion who attained the secondary level, (13.3%) and the highest proportion of residents who attained university (1.4%)

2.4. Economic Activity Characteristics of the Population

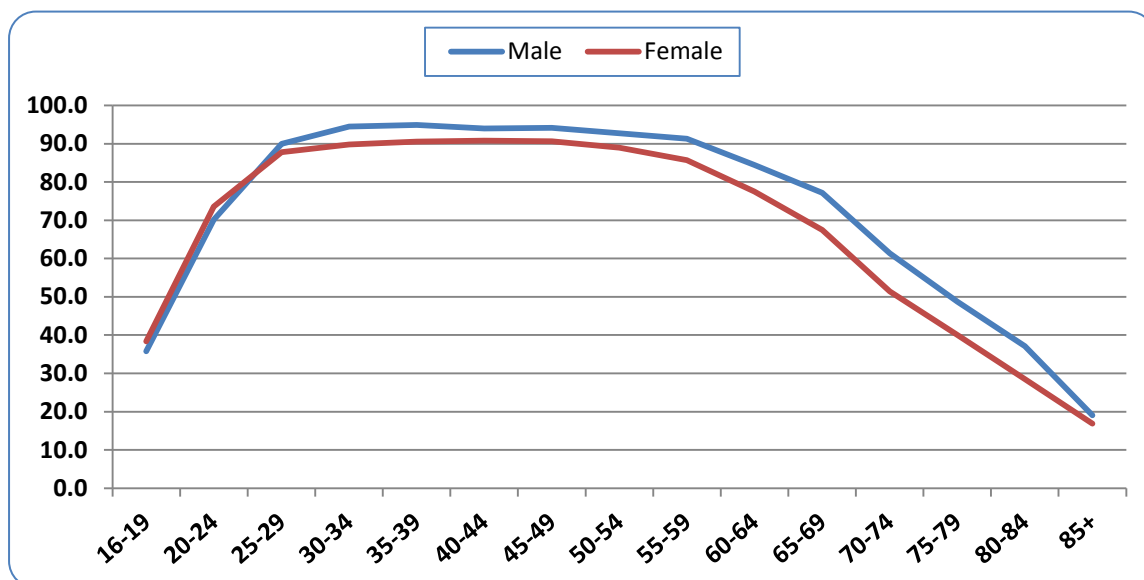
Table 14: Labour-force participation rate (%) among the resident population aged 16 years and above by sex, Eastern Province, District and area of residence

Provinces and Districts	Total			Urban			Rural		
	Both sexes	Male	Female	Both sexes	Male	Female	Both sexes	Male	Female
Rwanda	73.6	75.6	71.7	68.1	75.2	60.9	74.7	75.8	73.9
Eastern Province	75.2	76.6	74.0	68.9	74.5	63.4	75.7	76.8	74.8
Rwamagana	74.7	77.6	72.2	69.4	76.5	62.7	75.3	77.7	73.2
Nyagatare	74.1	75.6	72.6	73.7	77.7	69.7	74.1	75.4	73.0
Gatsibo	77.1	77.7	76.5	69.3	73.9	65.0	77.5	78.0	77.2
Kayonza	74.8	76.2	73.6	61.6	69.9	53.8	76.4	77.0	75.9
Kirehe	74.6	75.1	74.2	75.8	76.8	74.7	74.6	75.1	74.2
Ngoma	81.0	81.1	80.9	69.7	75.1	64.2	81.5	81.4	81.6
Bugesera	70.5	73.3	68.0	66.4	72.2	60.5	70.9	73.4	68.7

Source: Rwanda 4th Population and Housing Census, 2012 (NISR)

- The official working age in Rwanda is 16 years and above.
- The labour force participation varies greatly by district in Eastern Province: from 70.5% in Bugesera to Ngoma 81%.
- 77.1% of Gatsibo district resident aged 16 years and above are in the labour market, either working or looking for a job (economically active)
- Labour force participation rate is slightly higher among males (77.7%) than among females (76.5%) and in rural areas (77.5%) than in urban areas (69.3%).

Figure 5: Labour-force participation rate (LFPR) among the resident population aged 16 years and above in Gatsibo district by age and sex.



Source: Rwanda 4th Population and Housing Census, 2012 (NISR)

Error! Reference source not found. allow the study of the calendar and intensity of labour force participation and its variation by sex .The figure reveals:

- Early entry and late exit to the labour market in Gatsibo district were around 40% at age 16 (the official entry age in the labour market) and above 65% at 65 years (official age of retirement).
- Labour force participation is intense between ages 25 and 60 with around 85% of the population in the labour market.
- Some gender disparity is remarkable in labour force participation, starting form 25-29years; males contribute more than females to labour force.

Table 15: Unemployment rate (%) among the active population aged 16 years and above in Eastern Province by sex, District and area of residence.

Provinces and Districts	Total			Urban			Rural		
	Both sexes	Male	Female	Both sexes	Male	Female	Both sexes	Male	Female
Rwanda	3.4	2.8	4.0	7.7	5.1	11.1	2.6	2.2	2.9
Eastern Province	2.6	2.1	3.0	3.7	2.6	4.9	2.5	2.0	2.9
Rwamagana	3.0	2.3	3.6	4.7	3.2	6.6	2.8	2.2	3.4
Nyagatare	2.2	1.8	2.5	3.0	2.2	3.9	2.1	1.7	2.4
Gatsibo	1.4	1.3	1.6	2.1	1.8	2.6	1.4	1.3	1.5
Kayonza	2.4	2.0	2.8	3.5	2.5	4.7	2.3	1.9	2.7
Kirehe	3.4	2.9	3.8	2.0	1.4	2.7	3.4	2.9	3.9
Ngoma	1.1	0.9	1.2	3.3	2.6	4.1	1.0	0.8	1.1
Bugesera	5.0	3.8	6.2	6.0	3.6	8.9	4.9	3.8	6.0

Source: Rwanda 4th Population and Housing Census, 2012 (NISR)

- In the Eastern Province, variations of unemployment rate are important by District; from 1.1% in Ngoma to 5% in Bugesera District,
- 1.4% of the total active population aged 16 years and above in Gatsibo district was unemployed the week preceding the census
- In Gatsibo district, unemployment rate (UR) is higher in urban areas (2.1%) than in rural areas (1.4%).
- Unemployment rate among females is higher than males' (1.6% vs 1.3%).

Chapter 3: Sub-Population

3.1. Children (0-17 years)

3.1.1. Children population

Table 16: Number and share (%) of children aged 0-17 years among the total resident population of Gatsibo district by sex and sector of residence

Sectors	Total Resident Population			Total Resident Children			Children Share (%)		
	Total	Male	Female	Total	Male	Female	Total	Male	Female
Rwanda	10,515,973	5,064,868	5,451,105	5,015,128	2,486,716	2,528,412	47.7	49.1	46.4
Eastern Province	2,595,703	1,258,090	1,337,613	127,721	636,425	640,296	4.9	50.6	47.9
Gatsibo district	433,020	207,669	225,351	217,477	107,613	109,864	50.2	51.8	48.8
Gasange	17,783	8,537	9,246	9,194	4,529	4,665	51.7	53.1	50.5
Gatsibo	36,690	17,496	19,194	19,019	9,444	9,575	51.8	54.0	49.9
Gitoki	33,409	15,836	17,573	17,165	8,407	8,758	51.4	53.1	49.8
Kabarore	50,288	24,842	25,446	25,387	12,557	12,830	50.5	50.5	50.4
Kageyo	21,567	10,332	11,235	10,763	5,336	5,427	49.9	51.6	48.3
Kiramuruzi	31,083	14,803	16,280	14,739	7,339	7,400	47.4	49.6	45.5
Kiziguro	29,996	14,280	15,716	14,559	7,218	7,341	48.5	50.5	46.7
Muhura	29,568	14,139	15,429	15,040	7,418	7,622	50.9	52.5	49.4
Murambi	29,032	13,642	15,390	14,313	7,059	7,254	49.3	51.7	47.1
Ngarama	30,354	14,423	15,931	15,408	7,552	7,856	50.8	52.4	49.3
Nyagihanga	24,159	11,548	12,611	11,871	5,822	6,049	49.1	50.4	48.0
Remera	26,110	12,429	13,681	13,057	6,493	6,564	50.0	52.2	48.0
Rugarama	37,029	17,867	19,162	18,343	9,225	9,118	49.5	51.6	47.6
Rwimbogo	35,952	17,495	18,457	18,619	9,214	9,405	51.8	52.7	51.0

Source: Rwanda 4th Population and Housing Census, 2012 (NISR)

- The children constitute half (50.2%) of resident population of Gatsibo District, with a slightly percentage of male children than female's one. (51.8% against 48.8%).
- The children share is high in Gatsibo and Rwimbogo (51.8) and small in Kiramuruzi sector (47.4%).

3.1.2. Children birth registration

Table 17: Percentage of the children aged 0-17 in Eastern Province whose birth was registered by sex, District and area of residence

Provinces And Districts	Total			Urban			Rural		
	Both sexes	Male	Female	Both sexes	Male	Female	Both sexes	Male	Female
Rwanda	79.0	79.0	79.0	74.1	74.3	73.9	79.8	79.7	79.8
Eastern Province	77.6	77.5	77.7	77.2	77.2	77.3	77.6	77.5	77.7
Rwamagana	82.3	82.1	82.5	84.7	85.2	84.3	82.1	81.8	82.3
Nyagatare	73.4	73.5	73.4	71.5	71.6	71.4	73.6	73.6	73.6
Gatsibo	75.2	75.1	75.2	73.8	74.0	73.6	75.2	75.2	75.3
Kayonza	78.6	78.4	78.8	77.5	77.2	77.8	78.7	78.6	78.9
Kirehe	78.8	78.8	78.8	83.6	83.7	83.5	78.7	78.7	78.7
Ngoma	75.9	75.7	76.0	83.0	81.7	84.4	75.6	75.5	75.7
Bugesera	81.7	81.4	81.9	78.7	78.5	78.8	81.9	81.6	82.2

Source: Rwanda 4th Population and Housing Census, 2012 (NISR)

- At the national level the percentage of children whose birth was registered is 79%.
- Nyagatare district is the district in the Province with low percentage (73.4%) of children whose birth was registered at the time of the census.
- The situation is better in Rwamagana (82.3%), Bugesera (81.7%) and Kirehe (78.8%) whose percentages of birth registration are higher than the average of Eastern province.
- Birth registration does not vary by sex. In contrast it varies by area of residence and it is common in rural areas (75.2%) than in urban area (73.8%).

Table 18: Percentage of the children aged 0-17 in Gatsibo district whose birth was registered by sex, Sector and area of residence

Sectors	Total			Urban			Rural		
	Both sexes	Male	Female	Both sexes	Male	Female	Both sexes	Male	Female
Rwanda	79.0	79.0	79.0	74.1	74.3	73.9	79.8	79.7	79.8
Eastern Province	77.6	77.5	77.7	77.2	77.2	77.3	77.6	77.5	77.7
Gatsibo District	75.2	75.1	75.2	73.8	74.0	73.6	75.2	75.2	75.3
Gasange	81.2	81.1	81.4	0.0	0.0	0.0	81.2	81.1	81.4
Gatsibo	54.9	54.9	54.9	0.0	0.0	0.0	54.9	54.9	54.9
Gitoki	73.0	72.8	73.2	0.0	0.0	0.0	73.0	72.8	73.2
Kabarore	74.3	74.6	74.1	68.4	68.7	68.2	75.5	75.8	75.2
Kageyo	73.1	73.8	72.5	0.0	0.0	0.0	73.1	73.8	72.5
Kiramuruzi	74.4	74.0	74.9	73.9	74.1	73.7	74.6	74.0	75.3
Kiziguro	78.3	77.7	78.9	76.6	77.6	75.7	78.4	77.7	79.0
Muhura	82.5	82.9	82.1	0.0	0.0	0.0	82.5	82.9	82.1
Murambi	73.6	74.0	73.2	0.0	0.0	0.0	73.6	74.0	73.2
Ngarama	81.8	81.5	82.1	81.3	81.2	81.4	81.9	81.6	82.2
Nyagihanga	79.2	79.6	78.8	0.0	0.0	0.0	79.2	79.6	78.8
Remera	75.4	74.9	75.8	0.0	0.0	0.0	75.4	74.9	75.8
Rugarama	74.4	74.3	74.4	0.0	0.0	0.0	74.4	74.3	74.4
Rwimbogo	83.0	82.4	83.5	0.0	0.0	0.0	83.0	82.4	83.5

Source: Rwanda 4th Population and Housing Census, 2012 (NISR)

- Birth registration varies across sectors. The highest percentage of registered children is in Rwimbogo Sector (83%) while the lowest (54.9%) is in Gatsibo Sector.
- The percentage of birth registration of males is almost the same as of females.
- In all sectors the percentage of children whose birth was registered is lower in urban than in rural.

3.1.3. Economically active children

Table 19: Percentage of children aged 5-17 years currently employed by age group and sex and by district

Districts	5-9years			10-14years			15-17years		
	Total	Male	Female	Total	Male	Female	Total	Male	Female
Rwanda	0.9	1.0	0.9	2.8	3.0	2.7	21.2	20.8	21.6
Eastern Province	0.9	0.9	0.8	2.9	3.1	2.8	21.0	20.8	21.2
Rwamagana	0.6	0.7	0.6	2.3	2.5	2.1	20.3	21.3	19.3
Nyagatare	0.9	0.9	0.8	3.1	3.3	2.9	21.3	20.9	21.6
Gatsibo	1.1	1.2	1.0	3.0	3.2	2.8	20.8	20.1	21.5
Kayonza	0.6	0.6	0.6	2.4	2.4	2.4	18.9	18.5	19.2
Kirehe	1.1	1.2	1.1	3.2	3.3	3.1	22.0	21.4	22.6
Ngoma	0.9	0.9	0.9	3.4	3.4	3.5	24.6	24.4	24.9
Bugesera	0.7	0.7	0.8	2.8	3.3	2.4	19.4	19.7	19.0

Source: Rwanda 4th Population and Housing Census, 2012 (NISR)

Children labour depends on their ages.

- Between 5 and 9 years few children (0.9%) were employed at the time of the Census at the national level. This percentage is 1.1% in Gatsibo District. There is slightly difference between girls and boys.
- Between 10 years and 14 years the percentage of children who were employed during the census is around 3% at the national level, the same as in Gatsibo District.
- Between 15-17years, 21.2% children aged were employed at the time of the census at the national level. This percentage is 20.8% in Gatsibo District.

Figure 6: Employment among children aged 5 years and above in Gatsibo district

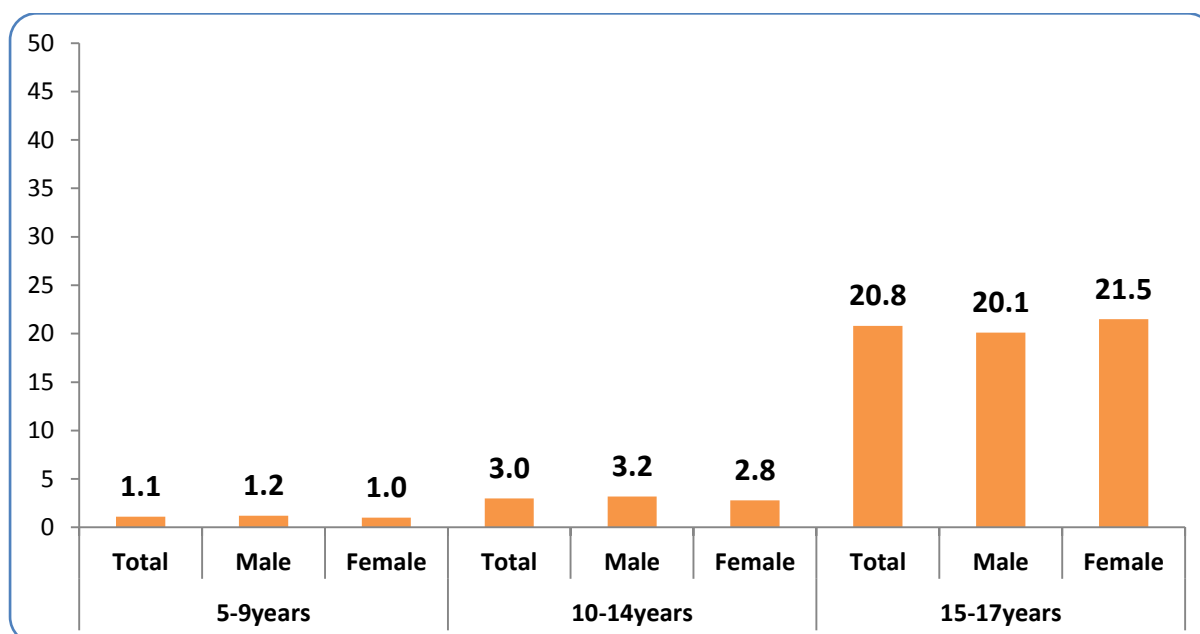


Table 20: Percentage of children aged 5-17 years currently employed by age group and sex and by sector in Gatsibo district

Sectors	5-9years			10-14years			15-17years		
	Both sexes	Male	Female	Both sexes	Male	Female	Both sexes	Male	Female
Rwanda	0.9	1.0	0.9	2.8	3.0	2.7	21.2	20.8	21.6
Eastern Province	0.9	0.9	0.8	2.9	3.1	2.8	21.0	20.8	21.2
Gatsibo district	1.1	1.2	1.0	3.0	3.2	2.8	20.8	20.1	21.5
Gasange	1.2	1.6	0.8	4.1	4.4	3.9	28.6	25.8	31.4
Gatsibo	0.3	0.6	0.1	1.6	1.8	1.4	16.0	16.1	15.9
Gitoki	0.9	1.0	0.7	3.6	4.2	3.0	24.1	20.7	27.4
Kabarore	0.6	0.6	0.7	2.9	2.6	3.2	21.0	21.4	20.7
Kageyo	1.5	1.7	1.2	3.1	3.6	2.6	25.3	22.7	27.9
Kiramuruzi	0.6	0.8	0.5	1.6	1.6	1.6	8.2	9.1	7.4
Kiziguro	1.2	1.4	1.0	2.6	2.8	2.4	13.4	13.9	12.9
Muhura	1.8	1.8	1.8	5.3	6.4	4.3	32.3	34.5	30.2
Murambi	0.8	1.0	0.6	2.3	2.2	2.3	22.8	21.6	24.1
Ngarama	4.6	5.0	4.2	5.2	5.0	5.3	30.9	28.9	32.9
Nyagihanga	0.4	0.4	0.5	2.5	2.8	2.3	17.3	17.8	16.8
Remera	0.6	0.7	0.5	2.8	3.5	2.1	19.2	16.8	21.6
Rugarama	0.2	0.3	0.2	1.7	1.6	1.8	15.9	14.6	17.2
Rwimbogo	1.4	1.4	1.3	2.9	3.0	2.9	23.9	21.8	25.9

Source: Rwanda 4th Population and Housing Census, 2012 (NISR)

- Ngarama Sector has the highest percentage of employed children aged between 5-9years (4.6%) while Muhura sector has the highest percentage of employed children aged 10-14years (5.3%) and children aged 15-17years (32.3%).

3.2. Youth (14-35 years)

3.2.1. Youth population

Table 21: Number and share (%) of the resident youth aged 14-35 years among the total resident population of Gatsibo district by Sector of residence and sex (Both sexes)

	Total Resident Population			Youth Resident Population			Share of youth among total population		
	Both sexes	Male	Female	Both sexes	Male	Female	Both sexes	Male	Female
Rwanda	10,515,973	5,064,868	5,451,105	4,166,777	2,033,130	2,133,647	39.6	40.1	39.1
Eastern Province	2,595,703	1,258,090	1,337,613	991,802	485,034	506,768	38.2	38.6	37.9
Gatsibo District	433,020	207,669	225,351	161,972	78,640	83,332	37.4	37.9	37.0
Gasange	17,783	8,537	9,246	6,123	2,931	3,192	34.4	34.3	34.5
Gatsibo	36,690	17,496	19,194	13,553	6,339	7,214	36.9	36.2	37.6
Gitoki	33,409	15,836	17,573	12,230	5,847	6,383	36.6	36.9	36.3
Kabarore	50,288	24,842	25,446	19,488	9,900	9,588	38.8	39.9	37.7
Kageyo	21,567	10,332	11,235	7,794	3,696	4,098	36.1	35.8	36.5
Kiramuruzi	31,083	14,803	16,280	12,440	6,144	6,296	40.0	41.5	38.7
Kiziguro	29,996	14,280	15,716	11,601	5,694	5,907	38.7	39.9	37.6
Muhura	29,568	14,139	15,429	10,770	5,222	5,548	36.4	36.9	36.0
Murambi	29,032	13,642	15,390	10,765	5,229	5,536	37.1	38.3	36.0
Ngarama	30,354	14,423	15,931	11,481	5,445	6,036	37.8	37.8	37.9
Nyagihanga	24,159	11,548	12,611	8,962	4,298	4,664	37.1	37.2	37.0
Remera	26,110	12,429	13,681	9,520	4,637	4,883	36.5	37.3	35.7
Rugarama	37,029	17,867	19,162	13,980	6,763	7,217	37.8	37.9	37.7
Rwimbogo	35,952	17,495	18,457	13,265	6,495	6,770	36.9	37.1	36.7

Source: Rwanda 4th Population and Housing Census, 2012 (NISR)

Youth is defined in Rwanda as the population aged 14 to 35.

- At the time of the census, young people in Gatsibo district were 161,972 which represent 37.4% of the total resident population of the district (433,020)
- Although the share of the youth is almost the same (at district level, it varies a little within the sectors of the district.
- Sector with the highest youth share are Kiramuruzi (40.0), while Gasange have the lowest percentage of youth (34.4%).

3.2.2. Educational characteristics of youth

Table 22: Distribution (count and %) of the resident youth of Gatsibo district aged 14-35 years by Sector of residence and school attendance status (Both sexes)

Sectors	Counts				Percentage			
	Total	Currently attending	No longer attending	Never attended	Total	Currently attending	No longer attending	Never attended
Rwanda	4,166,777	1,223,587	2,427,974	515,216	100	29.4	58.3	12.4
Eastern Province	991,802	283,116	572,169	136,517	100	28.5	57.7	13.8
Gatsibo District	161,972	47,792	92,202	21,978	100	29.5	56.9	13.6
Gasange	6,123	1,541	3,414	1,168	100	25.2	55.8	19.1
Gatsibo	13,553	4,485	7,279	1,789	100	33.1	53.7	13.2
Gitoki	12,230	3,323	7,106	1,801	100	27.2	58.1	14.7
Kabarore	19,488	5,837	10,728	2,923	100	30.0	55.0	15.0
Kageyo	7,794	2,003	4,521	1,270	100	25.7	58.0	16.3
Kiramuruzi	12,440	4,391	6,966	1,083	100	35.3	56.0	8.7
Kiziguro	11,601	4,129	6,293	1,179	100	35.6	54.2	10.2
Muhura	10,770	2,798	6,421	1,551	100	26.0	59.6	14.4
Murambi	10,765	2,731	6,911	1,123	100	25.4	64.2	10.4
Ngarama	11,481	2,956	6,728	1,797	100	25.7	58.6	15.7
Nyagihanga	8,962	2,625	5,038	1,299	100	29.3	56.2	14.5
Remera	9,520	2,549	5,603	1,368	100	26.8	58.9	14.4
Rugarama	13,980	4,586	7,746	1,648	100	32.8	55.4	11.8
Rwimbogo	13,265	3,838	7,448	1,979	100	28.9	56.1	14.9

Source: Rwanda 4th Population and Housing Census, 2012 (NISR)

- Youth who have never attended school represent 12.4% of the total youth population at national level and 13.6% of the total resident population of Gatsibo District.
- The percentage of youth who never attended school varies a lot within Sectors of Gatsibo district. The highest percentage was registered in Gasange (19.1%) whereas the lowest percentage of youth who never attended school was enumerated in Kiramuruzi (8.7%).

Table 23: Distribution (count and %) of the youth population of Gatsibo district aged 14-35 years by Sector of residence and highest level of education attained (Both sexes)

Sectors	Total (Counts)	Total (%)	No schooling	Preschool	Primary	Post-primary	Secondary	University	Not stated
Rwanda	4,166,777	100	12.4	0.3	61.4	0.2	21.7	3.3	0.8
Eastern Province	991,802	100	13.8	0.3	63.6	0.1	19.5	1.8	0.8
Gatsibo District	161,972	100	13.6	0.4	64.6	0.1	19.1	1.4	0.7
Gasange	6,123	100	19.1	0.3	65.4	0.1	13.4	0.8	1.0
Gatsibo	13,553	100	13.2	0.1	58.0	0.2	26.3	1.6	0.5
Gitoki	12,230	100	14.7	0.1	68.3	0.1	14.8	0.9	1.0
Kabarore	19,488	100	15.0	0.3	58.4	0.1	23.4	1.9	0.7
Kageyo	7,794	100	16.3	0.2	68.8	0.1	13.1	0.6	0.9
Kiramuruzi	12,440	100	8.7	1.1	60.0	0.2	26.6	2.4	0.9
Kiziguro	11,601	100	10.2	0.2	59.1	0.2	27.5	2.2	0.7
Muhura	10,770	100	14.4	0.1	66.2	0.1	17.4	1.2	0.5
Murambi	10,765	100	10.4	1.5	73.0	0.1	13.4	0.8	0.7
Ngarama	11,481	100	15.7	1.5	65.9	0.1	14.4	1.8	0.6
Nyagihanga	8,962	100	14.5	0.2	71.1	0.1	12.8	0.6	0.7
Remera	9,520	100	14.4	0.1	68.5	0.2	15.3	0.9	0.8
Rugarama	13,980	100	11.8	0.1	65.4	0.1	20.7	1.4	0.5
Rwimbogo	13,265	100	14.9	0.3	66.2	0.2	16.4	1.1	0.8

Source: Rwanda 4th Population and Housing Census, 2012 (NISR)

- In Gatsibo district, among all youths, 64.6% attended only the primary school level, 19.1% attended the secondary education, 1.4% went to university, and 13.6% have no education.
- The highest level of education attained varies across sectors of the district.
 - The sectors with the highest percentage of youth with no schooling are Gasange (19.1%), Kageyo (16.3%) and Ngarama (15.7%).
 - Youth with university level is high in Kiramuruzi sector (2.4%); while youth with secondary level also high in Kiziguro sector (27.5%),
 - The sectors with the highest percentages of youth with primary education are Murambi (73%), Nyagihanga (71.1%) and Kageyo (68.8%).

3.2.3. Economically active youth

Table 24: Distribution (count and %) of the resident youth in Gatsibo district aged 14 - 35 years by economic activity status and sex, and by sector residence

Sectors	Total youth Employed	Total (%)	Employed			Unemployed			Inactive			Not stated		
			Both sexes	Male	Female	Both sexes	Male	Female	Both sexes	Male	Female	Both sexes	Male	Female
Rwanda	4,166,777	100	59.6	29.7	29.9	2.5	1.0	1.5	36.6	17.2	19.4	1.3	0.9	0.4
Eastern Province	991,802	100	61.4	30.2	31.3	1.8	0.7	1.1	35.7	17.2	18.4	1.1	0.8	0.3
Gatsibo District	161,972	100	61.6	29.6	32.0	1.1	0.4	0.6	34.2	16.7	17.4	3.2	1.7	1.4
Gasange	6,123	100	68.9	32.3	36.6	1.6	0.7	0.9	29.5	14.9	14.6	0.0	0.0	0.0
Gatsibo	13,553	100	45.6	21.6	24.0	0.9	0.3	0.6	24.0	11.8	12.2	29.5	13.0	16.4
Gitoki	12,230	100	67.6	31.5	36.1	0.7	0.3	0.4	31.7	16.0	15.7	0.0	0.0	0.0
Kabarore	19,488	100	60.4	28.8	31.6	1.0	0.4	0.6	33.6	16.8	16.9	4.9	4.8	0.1
Kageyo	7,794	100	70.2	32.5	37.7	2.7	1.0	1.7	27.1	13.9	13.2	0.0	0.0	0.0
Kiramuruzi	12,440	100	47.1	25.8	21.3	1.1	0.5	0.5	51.4	22.8	28.6	0.3	0.2	0.1
Kiziguro	11,601	100	55.8	28.4	27.4	1.0	0.4	0.7	42.9	20.0	22.9	0.3	0.3	0.0
Muhura	10,770	100	69.7	33.7	36.0	1.0	0.5	0.5	28.9	14.1	14.9	0.4	0.2	0.1
Murambi	10,765	100	69.8	33.5	36.3	0.9	0.3	0.6	29.3	14.8	14.5	0.0	0.0	0.0
Ngarama	11,481	100	71.2	32.8	38.4	0.5	0.2	0.3	27.9	14.2	13.7	0.4	0.2	0.2
Nyagihanga	8,962	100	58.8	28.3	30.5	1.2	0.5	0.7	40.0	19.1	20.9	0.0	0.0	0.0
Remera	9,520	100	66.0	31.3	34.7	1.4	0.4	0.9	32.6	17.0	15.6	0.0	0.0	0.0
Rugarama	13,980	100	59.1	28.5	30.6	0.9	0.3	0.5	39.9	19.5	20.4	0.1	0.0	0.0
Rwimbogo	13,265	100	64.0	30.8	33.3	0.9	0.5	0.5	35.0	17.8	17.3	0.0	0.0	0.0

Source: Rwanda 4th Population and Housing Census, 2012 (NISR)

- In Gatsibo district, 61.6% of the youth was employed at the time of the census, while 34.2% were out of the labour market (inactive). Only 1.1% were unemployed.
- High percentages of employed youth are observed in Ngarama (71.2%), Kageyo (70.2%), and Murambi (69.8%), and the low are in Gatsibo Sectors (45.6%) and Kiramuruzi (47.1%).
- High percentage of unemployment youth is in Kageyo Sector (2.7%) while the lowest percentage of unemployed youth is in Ngarama Sectors (0.5% both).
- At the time of the census, the youth out of the labour market was high in Kiramuruzi (51.4%) and Kiziguro sectors (42.9%), and low in Kageyo (27.1%) and Gatsibo (24%).

Table 25: Distribution (%) of the currently employed youth of Gatsibo district aged 14-35 years by employment status and sex

Sectors	Total (Counts)	Total (%)	Employee	Employer	Self-employed	Contributing family worker	Producers cooperative member	Other	Not Stated
Rwanda	4,166,777	100	21.4	0.4	61.4	12.1	0.3	0.2	4.2
Eastern Province	991,802	100	13.9	0.4	76.9	6.2	0.3	0.1	2.2
Gatsibo district	161,972	100	10.9	0.4	79.8	6.4	0.3	0.1	2.1
Gasange	6,123	100	11.4	0.8	81.3	3.6	0.0	0.1	2.7
Gatsibo	13,553	100	16.9	0.5	71.7	8.6	0.4	0.3	1.7
Gitoki	12,230	100	10.5	0.4	80.0	8.0	0.1	0.0	1.0
Kabarore	19,488	100	9.6	0.5	80.5	6.4	0.2	0.1	2.7
Kageyo	7,794	100	6.9	0.3	90.2	1.7	0.1	0.0	0.7
Kiramuruzi	12,440	100	26.0	0.7	60.4	5.9	1.5	0.1	5.4
Kiziguro	11,601	100	17.8	0.5	73.5	4.4	0.7	0.0	3.1
Muhura	10,770	100	6.1	0.5	77.7	12.9	0.1	0.2	2.5
Murambi	10,765	100	7.4	0.2	84.2	6.8	0.1	0.1	1.1
Ngarama	11,481	100	9.6	0.4	82.7	5.5	0.1	0.1	1.7
Nyagihanga	8,962	100	6.5	0.2	90.2	1.7	0.0	0.1	1.4
Remera	9,520	100	10.1	0.2	80.3	7.5	0.2	0.2	1.5
Rugarama	13,980	100	10.0	0.3	81.7	5.9	0.3	0.1	1.8
Rwimbogo	13,265	100	7.7	0.3	82.5	7.0	0.1	0.5	1.9

Source: Rwanda 4th Population and Housing Census, 2012 (NISR)

- In Gakenke district, the majority of youth aged 14-35 currently employed are self-employed sector (79.8%) followed by employees (10.9%) and contributing family workers (6.4%).
- The highest percentage of employee youth is in Kiramuruzi sector (26%), and the lowest in Muhura (6.1%).
- Majority of self-employed youth are in Murambi (84.2%) while the youth in Kiramuruzi sector are less self-employed (60.4%).

3.3. Persons with Disabilities

Table 26: Number and share (%) of persons with disabilities of Gatsibo district aged 5 years and above (Prevalence of disabilities) by Sector of residence and sex

Sector of residence	Total resident population aged 5 years and above	Persons aged 5 years and above with disabilities			Prevalence of disabilities (% of persons with disabilities)
		Both sexes	Male	Female	
Rwanda	8,975,946	446,453	221,150	225,303	5.0
Eastern province	2,188,364	116,757	59,747	57,010	5.3
Gatsibo district	366,768	22,669	11,536	11,133	6.2
Gasange	15,092	612	310	302	4.1
Gatsibo	31,339	2,153	1,048	1,105	6.9
Gitoki	27,960	1,509	808	701	5.4
Kabarore	42,291	2,366	1,257	1,109	5.6
Kageyo	18,230	819	428	391	4.5
Kiramuruzi	26,374	1,852	870	982	7.0
Kiziguro	25,433	1,565	814	751	6.2
Muhura	25,461	1,436	716	720	5.6
Murambi	24,248	1,621	758	863	6.7
Ngarama	25,596	1,875	991	884	7.3
Nyagihanga	20,885	1,385	718	667	6.6
Remera	22,141	1,393	668	725	6.3
Rugarama	31,341	2,386	1,223	1,163	7.6
Rwimbogo	30,377	1,697	927	770	5.6

Source: Rwanda 4th Population and Housing Census, 2012 (NISR)

- At the national level, 5% of resident population aged 5 years and above have a disability.
- In Eastern Province, the prevalence rate is 5.3%, while in Gatsibo district it is 6.2%
- At sector level, the high prevalence rates of resident population aged 5 years and above with disability are in Rugarama (7.6%), Ngarama (7.3%) and Kiramuruzi (7%) while the low ones are in Gasange (4.1%) and Kageyo (4.5%).

3.4. Elderly Population

3.4.1. Elderly share

Table 27: Number and share (%) of the resident elderly (aged 60 years and above) among the total resident population of Gatsibo district by Sector of residence and sex

Sector of residence	Total population			Total Elderly Population			share of elderly Population among total population		
	Both sexes	Male	Female	Both sexes	Male	Female	Both sexes	Male	Female
Rwanda	10,515,973	5,064,868	5,451,105	511,738	207,239	304,499	4.9	4.1	5.6
Eastern province	2,595,703	1,258,090	1,337,613	119,148	51,169	67,979	4.6	4.1	5.1
Gatsibo district	433,020	207,669	225,351	19,770	8,164	11,606	4.6	3.9	5.2
Gasange	17,783	8,537	9,246	901	364	537	5.1	4.3	5.8
Gatsibo	36,690	17,496	19,194	1,653	725	928	4.5	4.1	4.8
Gitoki	33,409	15,836	17,573	1,377	547	830	4.1	3.5	4.7
Kabarore	50,288	24,842	25,446	2,021	883	1,138	4.0	3.6	4.5
Kageyo	21,567	10,332	11,235	1,093	443	650	5.1	4.3	5.8
Kiramuruzi	31,083	14,803	16,280	1,496	539	957	4.8	3.6	5.9
Kiziguro	29,996	14,280	15,716	1,617	611	1,006	5.4	4.3	6.4
Muhura	29,568	14,139	15,429	1,509	633	876	5.1	4.5	5.7
Murambi	29,032	13,642	15,390	1,365	515	850	4.7	3.8	5.5
Ngarama	30,354	14,423	15,931	1,101	454	647	3.6	3.1	4.1
Nyagihanga	24,159	11,548	12,611	1,258	547	711	5.2	4.7	5.6
Remera	26,110	12,429	13,681	1,325	531	794	5.1	4.3	5.8
Rugarama	37,029	17,867	19,162	1,688	714	974	4.6	4.0	5.1
Rwimbogo	35,952	17,495	18,457	1,366	658	708	3.8	3.8	3.8

Source: Rwanda 4th Population and Housing Census, 2012 (NISR)

- In 2012, the elderly persons constitute 4.6% of resident population of Gatsibo District.
- The share of the elderly females is higher than the male's one (5.2% vs. 3.9%), reflecting the higher life expectancy of women.
- The elderly share is high in Kiziguro sector (5.4%) and low in Ngarama sector (3.6%).

3.4.2. Economically active elderly

Table 28: Distribution (count and %) of the elderly resident (aged 60 years and above) by economic activity status and sex, and by sector of residence

Sectors	Total resident elderly population			Total elderly population currently Employed			% of currently Employed elderly		
	Both sexes	Male	Female	Both sexes	Male	Female	Both sexes	Male	Female
Rwanda	511,738	207,239	304,499	271,605	117,822	153,783	53.1	56.9	50.5
Eastern province	119,148	51,169	67,979	68,048	31,612	36,436	57.1	61.8	53.6
Gatsibo district	19,770	8,164	11,606	11,778	5,269	6,509	59.6	64.5	56.1
Gasange	901	364	537	531	224	307	58.9	61.5	57.2
Gatsibo	1,653	725	928	841	391	450	50.9	53.9	48.5
Gitoki	1,377	547	830	856	362	494	62.2	66.2	59.5
Kabarore	2,021	883	1,138	1,201	595	606	59.4	67.4	53.3
Kageyo	1,093	443	650	722	299	423	66.1	67.5	65.1
Kiramuruzi	1,496	539	957	667	290	377	44.6	53.8	39.4
Kiziguro	1,617	611	1,006	914	376	538	56.5	61.5	53.5
Muhura	1,509	633	876	1,015	444	571	67.3	70.1	65.2
Murambi	1,365	515	850	887	360	527	65.0	69.9	62.0
Ngarama	1,101	454	647	750	338	412	68.1	74.4	63.7
Nyagihanga	1,258	547	711	763	338	425	60.7	61.8	59.8
Remera	1,325	531	794	766	330	436	57.8	62.1	54.9
Rugarama	1,688	714	974	998	468	530	59.1	65.5	54.4
Rwimbogo	1,366	658	708	867	454	413	63.5	69.0	58.3

Source: Rwanda 4th Population and Housing Census, 2012 (NISR)

- In Gatsibo District, 59.6% of elderly populations were still working 2012. The share of males is greater than females' one (64.5% Vs 56.1%).
- The share of employed elderly population is highest in Ngarama sector (68.1%) and lowest in Kiramuruzi (44.6%).

3.4.3. Marital status of elderly

Table 29: Distribution (%) of the elderly resident (aged 60 years and above) of Gatsibo district by sector of residence and marital status (Both sexes)

Sectors	Total (Count)	Total (%)	Never married	Married	Widowed	Separated / Divorced	Not Stated
Rwanda	511,738	100	2.2	56.5	38.6	2.5	0.2
Eastern Province	119,148	100	2.4	56.9	37.4	3.1	0.2
Gatsibo district	19,770	100	2.4	55.4	39.0	3.0	0.2
Gasange	901	100	2.1	58.9	36.3	2.3	0.3
Gatsibo	1,653	100	3.1	58.1	36.0	2.7	0.1
Gitoki	1,377	100	1.9	53.1	40.6	4.1	0.4
Kabarore	2,021	100	4.1	55.6	37.1	3.0	0.2
Kageyo	1,093	100	1.4	56.5	39.8	2.2	0.2
Kiramuruzi	1,496	100	2.3	48.5	45.4	3.7	0.1
Kiziguro	1,617	100	3.0	52.2	41.7	3.0	0.1
Muhura	1,509	100	3.1	60.4	33.9	2.5	0.1
Murambi	1,365	100	1.3	51.4	43.2	3.7	0.3
Ngarama	1,101	100	2.1	54.8	40.0	3.0	0.2
Nyagihanga	1,258	100	1.7	60.0	36.2	1.9	0.1
Remera	1,325	100	1.4	52.2	43.2	3.2	0.0
Rugarama	1,688	100	1.7	51.5	43.6	3.1	0.0
Rwimbogo	1,366	100	2.8	65.3	28.4	2.7	0.8

Source: Rwanda 4th Population and Housing Census, 2012 (NISR)

- In Gatsibo District, 55.4% of elderly are married and 39% are widowed. The percentage of divorced/separated is 3.0 while the percentage of the never married people is 2.4%.
- Marital status among the elderly varies slightly by sector of residence. Marriage rate is high in Rwimbogo (65.3%) and Muhura (60.4%) sectors. Conversely widowhood is widespread in Kiramuruzi (45.4%), and Rugarama sectors (43.6%).

Chapter 4: Households and Housing Characteristics

4.1. Households Characteristics

4.1.1. Average size of households

Table 30: Number of private households of Gatsibo district and their corresponding population by Sector and mean size of private households

Sectors	Number of private households	Corresponding population	Mean size of private household
Rwanda	2,424,898	10,378,021	4.3
Eastern Province	599,272	2,568,499	4.3
Gatsibo district	96,320	420,466	4.4
Gasange	3,841	17,783	4.6
Gatsibo	5,924	25,553	4.3
Gitoki	7,750	33,409	4.3
Kabarore	11,076	49,262	4.4
Kageyo	5,053	21,564	4.3
Kiramuruzi	7,404	31,004	4.2
Kiziguro	6,765	29,947	4.4
Muhura	6,761	29,415	4.4
Murambi	6,683	29,032	4.3
Ngarama	7,199	30,262	4.2
Nyagihanga	5,624	24,159	4.3
Remera	6,091	26,110	4.3
Rugarama	8,427	37,014	4.4
Rwimbogo	7,722	35,952	4.7

Source: Rwanda 4th Population and Housing Census, 2012 (NISR)

- The average household size in Gatsibo district is 4.4 persons.
- At the Sector level, high sizes are found in Rwimbogo (4.7 persons) and Gasange (4.6 persons).
- The smallest household sizes are found in Ngarama and Kiramuruzi (4.2 persons each).

4.1.2. Private households' heads of Gatsibo district

Table 31: Distribution (count and %) of private households' heads of Gatsibo district by Sector and sex

Sectors	Count			%		
	Both sexes	Male	Female	Both sexes	Male	Female
Rwanda	2,424,898	1,728,945	695,953	100	71.3	28.7
Eastern Province	599,272	434,694	164,578	100	72.5	27.5
Gatsibo District	96,320	69,707	26,613	100	72.4	27.6
Gasange	3,841	2,919	922	100	76.0	24.0
Gatsibo	5,924	4,364	1,560	100	73.7	26.3
Gitoki	7,750	5,608	2,142	100	72.4	27.6
Kabarore	11,076	8,240	2,836	100	74.4	25.6
Kageyo	5,053	3,838	1,215	100	76.0	24.0
Kiramuruzi	7,404	4,840	2,564	100	65.4	34.6
Kiziguro	6,765	4,448	2,317	100	65.8	34.2
Muhura	6,761	4,995	1,766	100	73.9	26.1
Murambi	6,683	4,599	2,084	100	68.8	31.2
Ngarama	7,199	5,348	1,851	100	74.3	25.7
Nyagihanga	5,624	4,248	1,376	100	75.5	24.5
Remera	6,091	4,284	1,807	100	70.3	29.7
Rugarama	8,427	5,997	2,430	100	71.2	28.8
Rwimbogo	7,722	5,979	1,743	100	77.4	22.6

Source: Rwanda 4th Population and Housing Census, 2012 (NISR)

- At the national level, 28.7% of private households are headed by women.
- High percentages of private household headed by female are found in the sectors of Kiramuruzi (34.6%), Kiziguro (34.2%), Murambi (31.2%) and Rugarama (29.7%), and small ones in Rwimbogo (22.6%), Gasange and Kageyo (24% each), and Nyagihanga (24.5%).

4.2. Housing Characteristics

4.2.1. Type of habitat

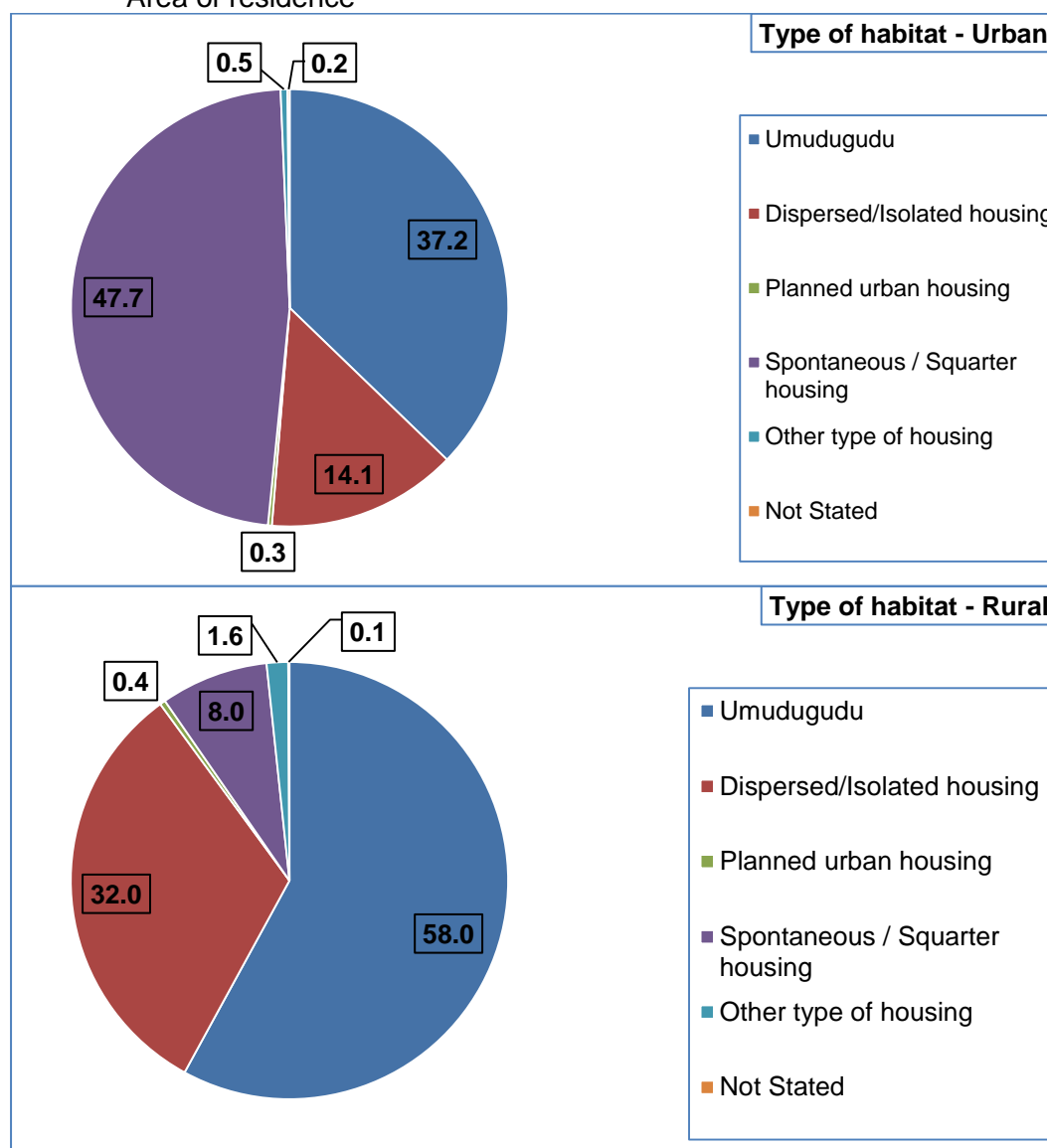
Table 32: Distribution (count and %) of private households of Gatsibo district by type of habitat and Sector

Sectors	Type of habitat							
	Total number of private households	Total (%)	(Clustered rural settlement) Umudugudu	Dispersed/Isolated housing	Planned urban housing	Spontaneous / Squatter housing	Other type of housing	Not Stated
Rwanda	2,424,898	100	49.4	33.7	2.2	14.1	0.6	0.1
Eastern Province	599,272	100	77.6	14.6	0.6	6.6	0.6	0.1
Gatsibo District	96,320	100	56.7	30.9	0.4	10.4	1.5	0.1
Gasange	3,841	100	30.4	62.5	0.2	6.3	0.6	0.1
Gatsibo	5,924	100	40.7	51.7	0.4	6.1	0.9	0.2
Gitoki	7,750	100	45.8	45.1	0.3	8.3	0.4	0.1
Kabarore	11,076	100	35.8	30.9	1.1	31.9	0.2	0.1
Kageyo	5,053	100	60.7	34.3	0.2	4.8	0.1	0.0
Kiramuruzi	7,404	100	57.2	14.2	0.2	28.1	0.4	0.0
Kiziguro	6,765	100	83.0	13.6	0.0	3.4	0.0	0.0
Muhura	6,761	100	44.7	51.6	0.7	2.8	0.3	0.0
Murambi	6,683	100	84.5	12.0	0.2	2.9	0.3	0.0
Ngarama	7,199	100	51.2	18.5	0.2	16.6	13.0	0.5
Nyagihanga	5,624	100	25.4	65.1	0.6	4.4	4.5	0.1
Remera	6,091	100	48.8	48.6	0.9	1.3	0.2	0.1
Rugarama	8,427	100	83.4	9.2	0.3	6.4	0.6	0.1
Rwimbogo	7,722	100	88.3	8.4	0.1	3.1	0.1	0.1

Source: Rwanda 4th Population and Housing Census, 2012 (NISR)

- The most common type of habitat in Gatsibo district is the clustered rural settlement (known as Umudugudu). Overall 56.7% of private households are of that type.
- Percentage of dispersed/isolated housing across sectors varies between 1.3% and 31.9%.
- Rwimbogo (88.3%) and Murambi (84.5%) are sectors with high percentage of clustered rural settlement (Umudugudu) and more spontaneous/squatter housing in Kabarore (31.9%) and Kiramuruzi (28.1%).

Figure 7: Distribution (%) of private households of Gatsibo district by type of habitat and by Area of residence



Source: Rwanda 4th Population and Housing Census, 2012 (NISR)

The type of habitat varies according to the area of residence.

- In urban areas, the predominant type is the spontaneous/squatter housing (47.7%) with clustered rural settlement (umudugudu) with 37.2%, and followed by the dispersed/isolated housing (14.1%).
- In rural areas the predominant type is clustered rural settlement (umudugudu) (58%) and dispersed/isolated housing with 32% and the spontaneous/squatter housing with (8%).

4.2.2. Tenure of the housing Units

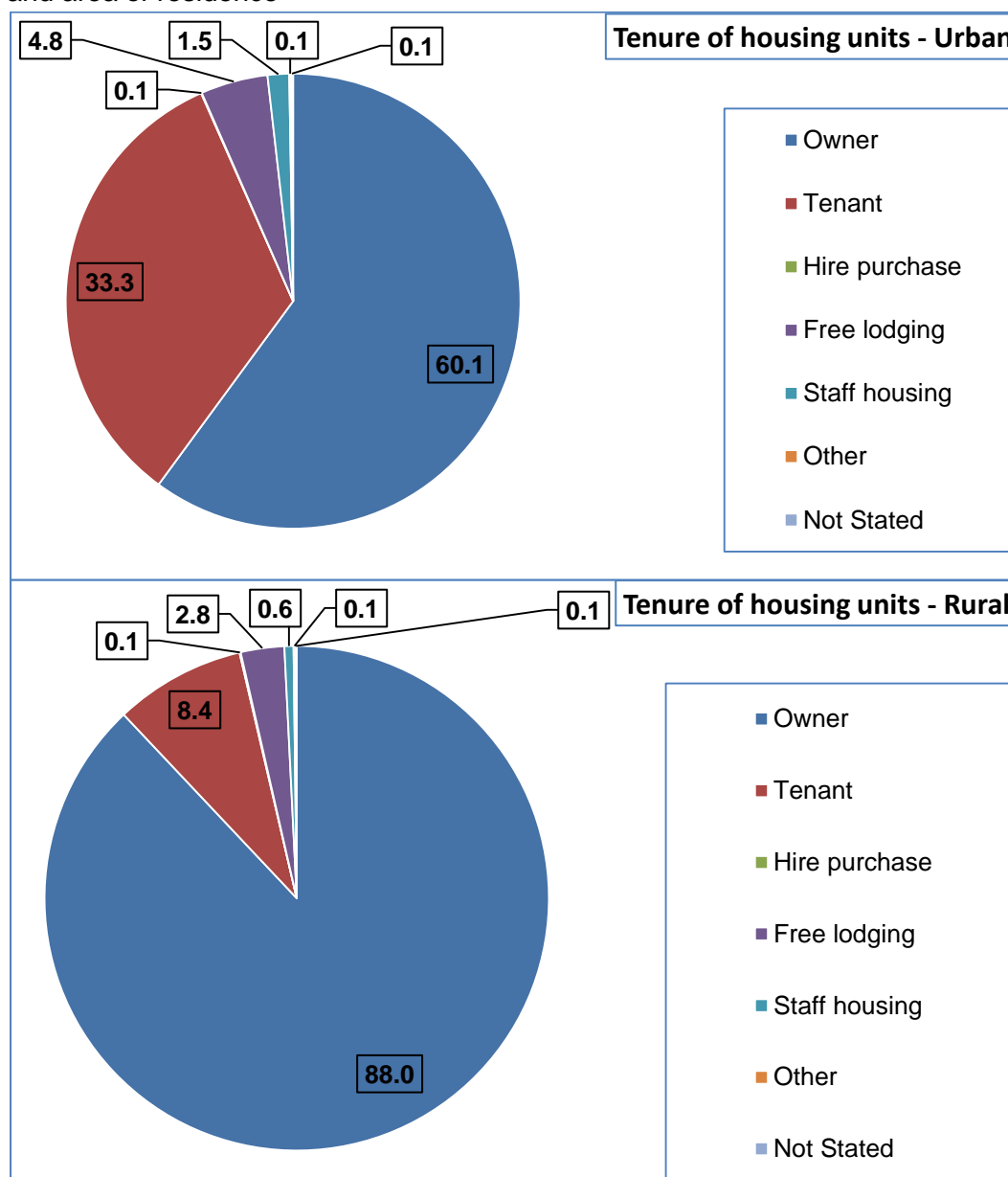
Table 33: Distribution (%) of private households of Gatsibo district by tenure of the housing units and by Sector

Sectors	Total number of private households	Total (%)	Owner	Tenant	Hire purchase	Free lodging	Staff housing	Other	Not Stated
Rwanda	2,424,898	100	80.0	14.8	0.1	4.2	0.6	0.2	0.1
Eastern Province	599,272	100	82.6	13.2	0.1	3.1	0.8	0.1	0.1
Gatsibo district	96,320	100	86.3	9.9	0.1	2.9	0.6	0.1	0.1
Gasange	3,841	100	92.3	4.5	0.0	2.7	0.3	0.2	0.1
Gatsibo	5,924	100	87.0	9.2	0.0	3.3	0.3	0.0	0.1
Gitoki	7,750	100	87.3	9.3	0.1	2.5	0.6	0.1	0.0
Kabarore	11,076	100	74.9	19.8	0.2	3.6	1.3	0.0	0.1
Kageyo	5,053	100	92.9	3.9	0.1	2.4	0.5	0.1	0.1
Kiramuruzi	7,404	100	77.4	15.2	0.0	5.0	2.0	0.2	0.1
Kiziguro	6,765	100	85.0	10.7	0.0	3.4	0.7	0.1	0.1
Muhura	6,761	100	92.5	4.4	0.0	2.6	0.3	0.2	0.0
Murambi	6,683	100	91.8	5.1	0.1	2.6	0.3	0.2	0.0
Ngarama	7,199	100	83.5	12.0	0.1	3.7	0.5	0.2	0.1
Nyagihanga	5,624	100	93.4	4.0	0.0	2.1	0.2	0.2	0.1
Remera	6,091	100	91.7	4.9	0.0	2.9	0.2	0.2	0.0
Rugarama	8,427	100	86.2	11.3	0.1	1.9	0.4	0.1	0.0
Rwimbogo	7,722	100	86.2	11.4	0.1	1.5	0.6	0.1	0.1

Source: Rwanda 4th Population and Housing Census, 2012 (NISR)

- In Gatsibo district, 86.3% of housing units are occupied by their owner and only 9.9% by tenants.
- At the sector level, the percentage of owners of households units is higher in Nyagihanga (93.4%), Kageyo (92.9%) and Gasange sectors (92.3%).

Figure 8: Distribution (%) of private households of Gatsibo district by tenure of the housing and area of residence



Source: Rwanda 4th Population and Housing Census, 2012 (NISR)

The tenure of housing units varies substantially according to the area of residence.

- The percentage of owners of housing units is 60.1% in urban areas against 88% in rural areas,
- The percentage of tenants of housing units is 33.3% in urban areas whereas it is 8.4% in rural areas,

4.2.3. Material of the housing units

4.2.3.1. Main materials of the roof

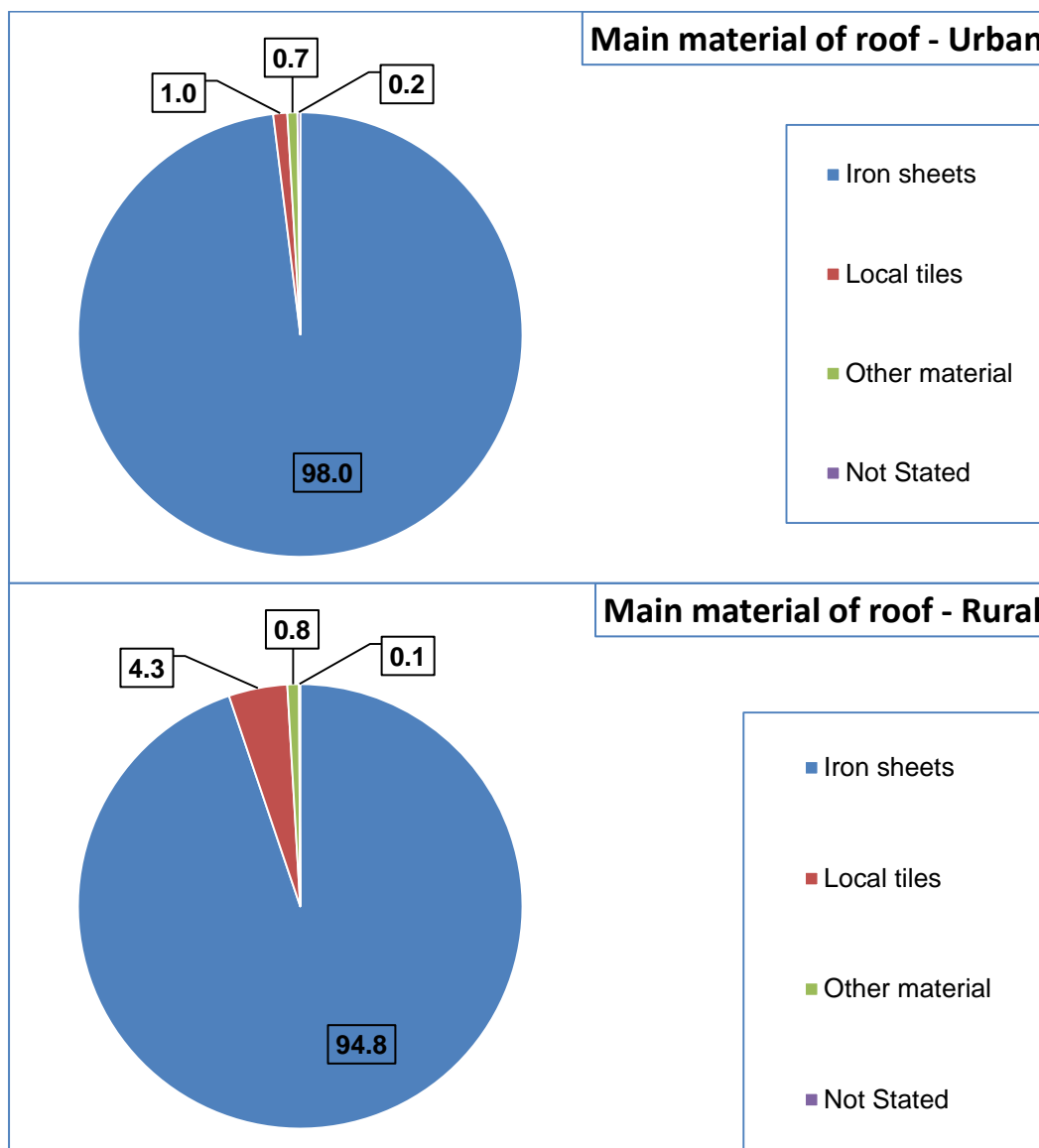
Table 34: Distribution (count and %) of private households of Gatsibo district by main material of the roof of the housing units and by Sector

Sectors	Total (count)	Total (%)	Iron sheets	Local tiles	Other material	Not Stated
Rwanda	2,424,898	100	59.5	39.3	0.9	0.1
Eastern Province	599,272	100	95.7	3.3	0.9	0.1
Gatsibo District	96,320	100	95.0	4.1	0.8	0.1
Gasange	3,841	100	99.6	0.2	0.1	0.1
Gatsibo	5,924	100	85.5	13.5	0.9	0.1
Gitoki	7,750	100	94.5	4.9	0.5	0.1
Kabarore	11,076	100	95.8	1.4	2.6	0.2
Kageyo	5,053	100	71.4	27.7	0.9	0.0
Kiramuruzi	7,404	100	98.7	0.8	0.4	0.1
Kiziguro	6,765	100	98.9	0.5	0.5	0.1
Muhura	6,761	100	99.0	0.4	0.6	0.0
Murambi	6,683	100	99.2	0.3	0.4	0.1
Ngarama	7,199	100	94.1	5.1	0.7	0.2
Nyagihanga	5,624	100	92.4	7.1	0.5	0.0
Remera	6,091	100	99.3	0.3	0.3	0.0
Rugarama	8,427	100	97.0	2.3	0.6	0.1
Rwimbogo	7,722	100	97.8	0.7	1.4	0.1

Source: Rwanda 4th Population and Housing Census, 2012 (NISR)

- In Gatsibo district, housing units are mainly covered by iron sheets (95%) and local tiles (4.1%).
- However this varies substantially by sector. The four high percentages of housing units covered by iron sheets are in Gasange (99.6%), Remera (99.3%), Muhura (99%) and Kiziguro (98.9%), and smallest ones are in Kageyo (71.4%) and Gatsibo (85.5%)
- The highest percentages of the housing units covered by local tiles are in Kageyo (27.7%) and Gatsibo (13.5%) while the lowest are under 0.7% in Kiziguro (0.5%), Remera and Murambi (0.3% each) and Gasange (0.2%) sectors.

Figure 9: Distribution (%) of private households of Gatsibo district by main material of the roof and of the housing unit and by area of residence



Source: Rwanda 4th Population and Housing Census, 2012 (NISR)

- The dominant material is the iron sheets in both urban and rural areas (98% in urban vs 94.8% in rural).

4.2.3.2. Main materials of the walls

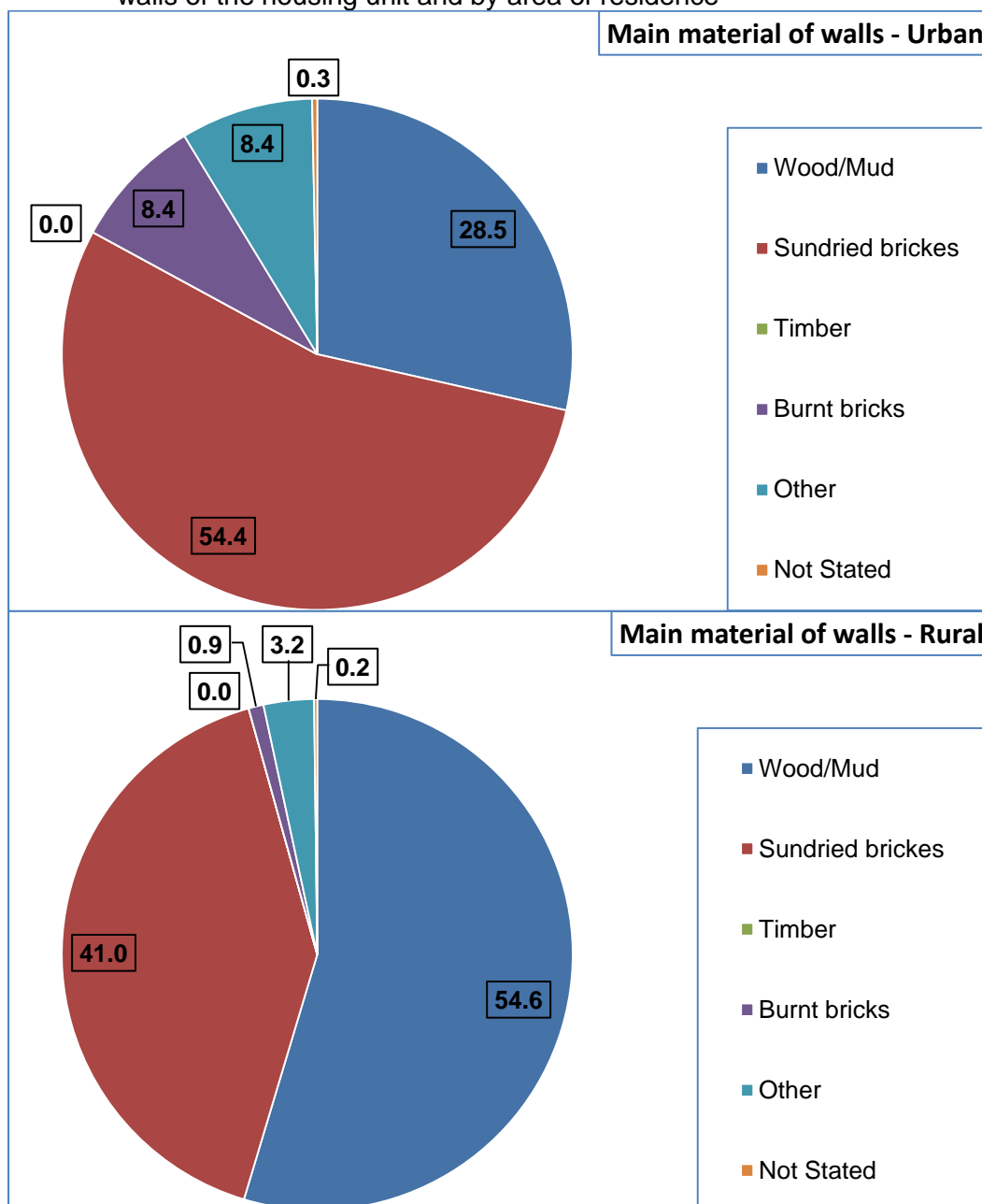
Table 35: Distribution (count and %) of private households of Gatsibo district by main material of the walls of the housing unit and by Sector

Sectors	Total number of private households	Total (%)	Wood /Mud	Sundried bricks	Timber	Burnt bricks	Other	Not Stated
Rwanda	2,424,898	100	35.6	55.3	0.8	2.6	5.4	0.3
Eastern Province	599,272	100	45.0	47.7	0.0	1.6	5.6	0.2
Gatsibo district	96,320	100	53.0	41.9	0.0	1.4	0.1	0.2
Gasange	3,841	100	91.4	4.1	0.0	1.2	0.1	0.2
Gatsibo	5,924	100	64.0	29.7	0.0	3.7	0.1	0.2
Gitoki	7,750	100	56.9	39.7	0.0	0.3	0.1	0.2
Kabarore	11,076	100	17.5	76.4	0.0	2.6	0.1	0.4
Kageyo	5,053	100	81.4	13.4	0.0	2.9	0.0	0.2
Kiramuruzi	7,404	100	62.0	29.5	0.0	2.5	0.1	0.4
Kiziguro	6,765	100	68.3	23.9	0.0	0.9	0.1	0.2
Muhura	6,761	100	83.1	10.3	0.0	1.8	0.0	0.1
Murambi	6,683	100	83.1	11.4	0.0	0.4	0.1	0.0
Ngarama	7,199	100	24.6	72.6	0.0	0.9	0.0	0.3
Nyagihanga	5,624	100	56.7	39.9	0.0	0.2	0.1	0.1
Remera	6,091	100	77.6	16.0	0.0	1.5	0.1	0.1
Rugarama	8,427	100	27.9	68.6	0.0	0.4	0.1	0.2
Rwimbogo	7,722	100	11.6	86.6	0.0	0.3	0.2	0.2

Source: Rwanda 4th Population and Housing Census, 2012 (NISR)

- In Gatsibo district walls of the housing units are mostly built with wood/mud (53%), sundried bricks (41.9%). Burnt bricks (1.4%) are one among other most used wall materials.
- At the sector level, sundried bricks are most used material for walls in Rwimbogo (86.6%), Kabarore (76.4%), Ngarama (72.6%) and Rugarama (68.6%).
- Most burnt bricks are used in Gatsibo sector (3.7%).

Figure 10: Distribution (%) of private households of Gatsibo district by main material of the walls of the housing unit and by area of residence



Source: Rwanda 4th Population and Housing Census, 2012 (NISR)

Materials used for walls of the housing units vary according to the area of residence.

- In urban areas, the dominant materials are sundried bricks (54.4%) and wood or mud (28.5%).
- In rural areas it is the wood or mud (54.6%) along with sundried bricks (41%).

4.2.4. Source of energy of the private households

4.2.4.1. Main source of energy for lighting

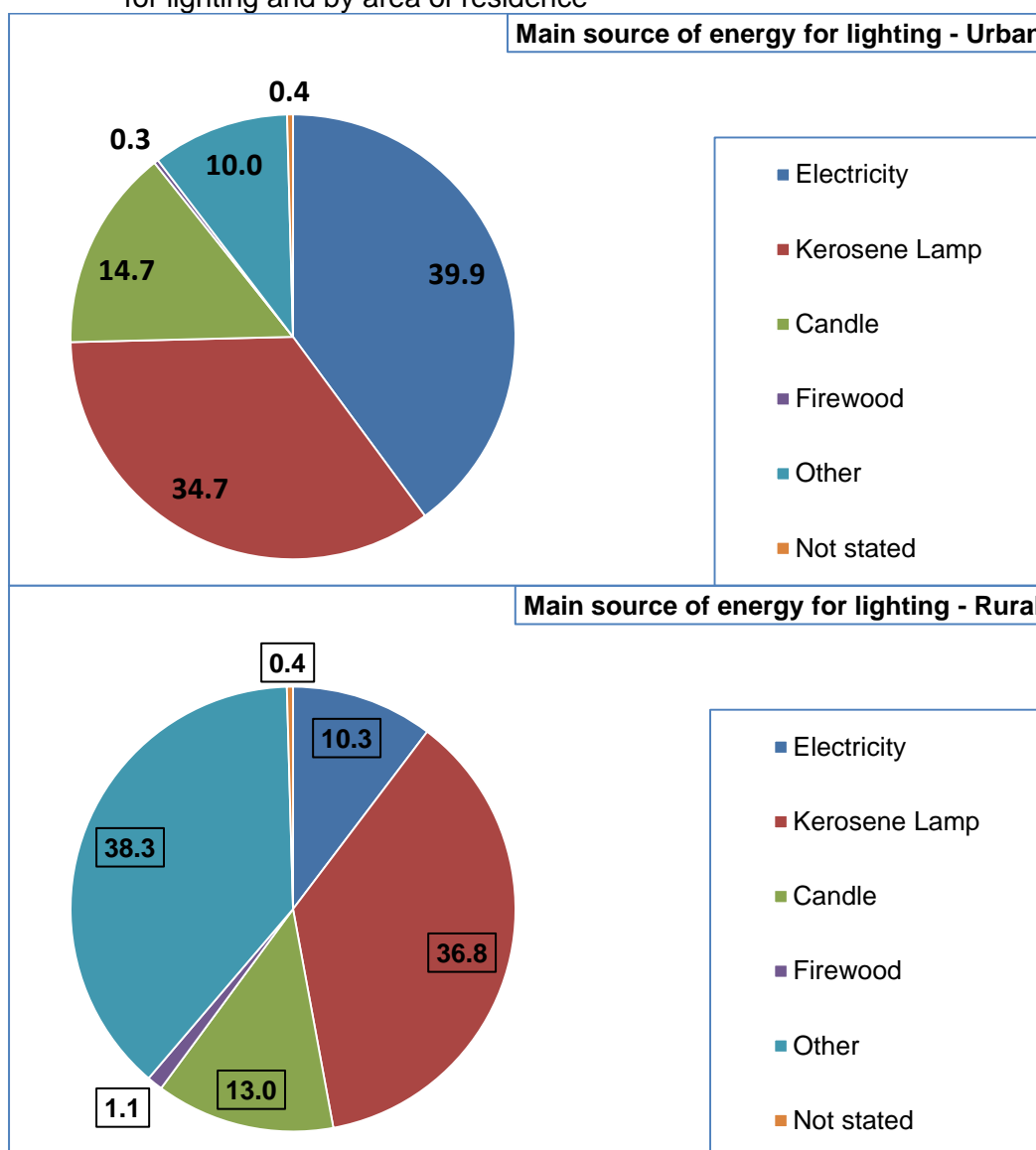
Table 36: Distribution (count and %) of private households of Gatsibo district by main source of energy for lighting and by Sector

Sectors	Total (count)	Total (%)	Electricity	Kerosene lamp	Candle	Firewood	Other	Not Stated
Rwanda	2,424,898	100	17.5	39.6	9.7	7.9	24.9	0.5
Eastern Province	599,272	100	13.5	52.9	8.3	1.1	23.9	0.4
Gatsibo District	96,320	100	11.5	36.7	13.1	1.1	34.0	0.4
Gasange	3,841	100	0.1	10.6	12.4	1.0	71.3	0.7
Gatsibo	5,924	100	9.2	25.5	23.2	1.4	38.1	0.5
Gitoki	7,750	100	10.7	31.4	13.8	1.7	38.3	0.5
Kabarore	11,076	100	14.6	40.6	10.1	0.6	31.0	0.4
Kageyo	5,053	100	5.0	18.6	26.7	2.6	41.3	0.4
Kiramuruzi	7,404	100	30.3	48.3	6.5	0.4	13.4	0.6
Kiziguro	6,765	100	35.0	47.4	4.3	0.3	10.5	0.5
Muhura	6,761	100	1.8	39.9	19.0	1.5	33.2	0.5
Murambi	6,683	100	8.9	50.9	8.8	0.7	27.6	0.5
Ngarama	7,199	100	5.9	12.6	19.0	1.4	54.9	0.4
Nyagihanga	5,624	100	0.7	26.9	17.2	3.4	48.2	0.3
Remera	6,091	100	4.3	37.9	18.7	0.6	32.6	0.3
Rugarama	8,427	100	18.7	45.4	5.4	0.4	29.1	0.4
Rwimbogo	7,722	100	2.3	53.1	8.6	0.6	31.5	0.5

Source: Rwanda 4th Population and Housing Census, 2012 (NISR)

- In Gatsibo district the main sources of energy for lighting used by the households are kerosene lamp (36.7%), candle (13.1%), electricity (11.5%), and firewood (1.1%).
- At the sector level, the percentage using kerosene lamp for lighting is higher in Rwimbogo sector (53.1%) than in other sectors where it varies between 10.6% (in Gasange sector) and 50.9% (in Murambi sector).
- The percentage of private households that use Electricity for lighting is higher in Kiziguro(35%) and Kiramuruzi (30.3%). It is low in Gasange (0.1%) and Nyagihanga (0.7%).
- The sectors with the highest percentages of private households using firewood for lighting are Nyagihanga (3.4%), Kageyo (2.6%) and Gitoki (1.7%).

Figure 11: Distribution (%) of private households of Gatsibo district by main source of energy for lighting and by area of residence



Source: Rwanda 4th Population and Housing Census, 2012 (NISR)

The sources of energy for lighting vary by area of residence.

- In urban areas, the three main sources of energy for lighting are electricity (39.5%), kerosene lamp (34.7%) and candle (14.7%).
- In rural areas, most of private households use kerosene lamps (36.8%) and candle (13%) for lighting.

4.2.4.2. Main source of energy for cooking

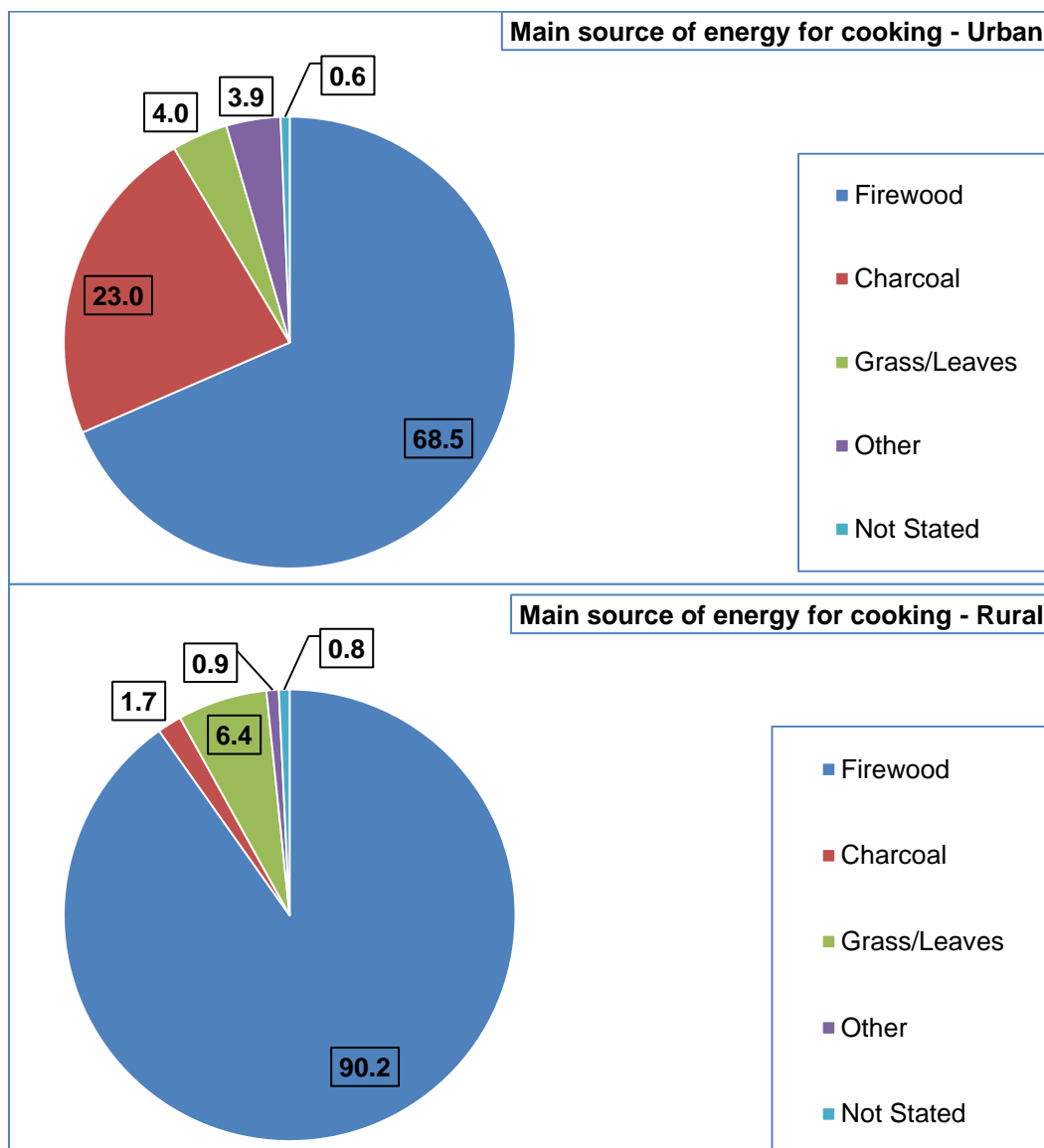
Table 37: Distribution (count and %) of private households of Gatsibo district by main source of energy for cooking and by Sector.

Sectors	Total number of private households	Total (%)	Firewood	Charcoal	Grass/Leaves	Other	Not Stated
Rwanda	2,424,898	100	82.2	13.2	2.7	1.2	0.7
Eastern Province	599,272	100	89.5	5.4	3.3	1.1	0.7
Gatsibo District	96,320	100	88.9	3.0	6.3	0.6	0.8
Gasange	3,841	100	78.9	1.0	18.0	0.9	0.9
Gatsibo	5,924	100	90.5	4.5	2.9	0.9	1.0
Gitoki	7,750	100	94.5	2.1	1.8	0.6	0.7
Kabarore	11,076	100	87.8	6.6	3.5	0.6	0.7
Kageyo	5,053	100	95.9	1.1	1.1	0.5	0.6
Kiramuruzi	7,404	100	77.8	8.7	10.1	1.5	1.1
Kiziguro	6,765	100	91.4	3.2	3.8	0.5	0.6
Muhura	6,761	100	88.7	1.1	8.4	0.6	0.8
Murambi	6,683	100	89.9	0.8	8.0	0.3	0.6
Ngarama	7,199	100	77.6	3.6	16.9	0.8	0.9
Nyagihanga	5,624	100	94.7	0.6	3.7	0.4	0.5
Remera	6,091	100	88.6	1.0	8.9	0.3	0.9
Rugarama	8,427	100	92.3	2.1	4.3	0.4	0.5
Rwimbogo	7,722	100	94.6	1.9	2.2	0.3	0.8

Source: Rwanda 4th Population and Housing Census, 2012 (NISR)

- At the district level, the main sources of energy for cooking used by the private households are firewood (88.9%), grass/leaves (6.3%) and charcoal (3%),
- At the sector level, firewood is the most used source of energy for cooking by private households in all sectors (between 77.6% and 95.9%).
- Sectors with the highest percentage of private households using charcoal as main source of energy for cooking are Kiramuruzi (8.7%), Kabarore (6.6%) and Gatsibo (4.5%).
- Sectors with the highest percentages of private households using grass/leaves as main source of energy for cooking are Gasange (18%), Ngarama (16.9%) and Kiramuruzi (10.1%).

Figure 12: Distribution (%) of private households of Gatsibo district by main source of energy for cooking and by area of residence



Source: Rwanda 4th Population and Housing Census, 2012 (NISR)

The main sources of energy for cooking used by private households vary by area of residence.

- In urban areas, private households use more firewood (68.5%) and charcoal (23%).
- In rural areas, private households use mainly firewood (90.2%).

4.2.5. Water and sanitation of the private households

4.2.5.1. Main source of water

Table 38: Distribution (count and %) of private households of Gatsibo district by main source of water and by Sector

Sectors	Total (Count)	Total (%)	Improved source of water	Unimproved source of water	Not stated
Rwanda	2,424,898	100	72.3	26.7	1.1
Eastern Province	599,272	100	59.2	39.7	1
Gatsibo District	96,320	100	54.2	44.5	1.2
Gasange	3,841	100	26.4	72.7	0.9
Gatsibo	5,924	100	70.4	28.1	1.5
Gitoki	7,750	100	71.0	27.9	1.2
Kabarore	11,076	100	55.7	42.8	1.4
Kageyo	5,053	100	68.7	30.3	1.0
Kiramuruzi	7,404	100	35.9	62.6	1.5
Kiziguro	6,765	100	55.6	43.3	1.0
Muhura	6,761	100	75.9	23.2	1.0
Murambi	6,683	100	41.5	56.9	1.4
Ngarama	7,199	100	30.9	67.5	1.6
Nyagihanga	5,624	100	53.7	45.6	0.6
Remera	6,091	100	67.1	32	0.9
Rugarama	8,427	100	62.6	36.6	0.8
Rwimbogo	7,722	100	38.9	59.8	1.5

Source: Rwanda 4th Population and Housing Census, 2012 (NISR)

- In Gatsibo District, 54.2% of private households use improved sources of water.
- At the sector level, the proportion of private households using water from improved sources is between 30% and 75% except Gasange sector where only 26% of private households have access to improved sources of water.

Figure 13: Distribution (%) of private households of Gatsibo district by improved and unimproved source of water and by Sector

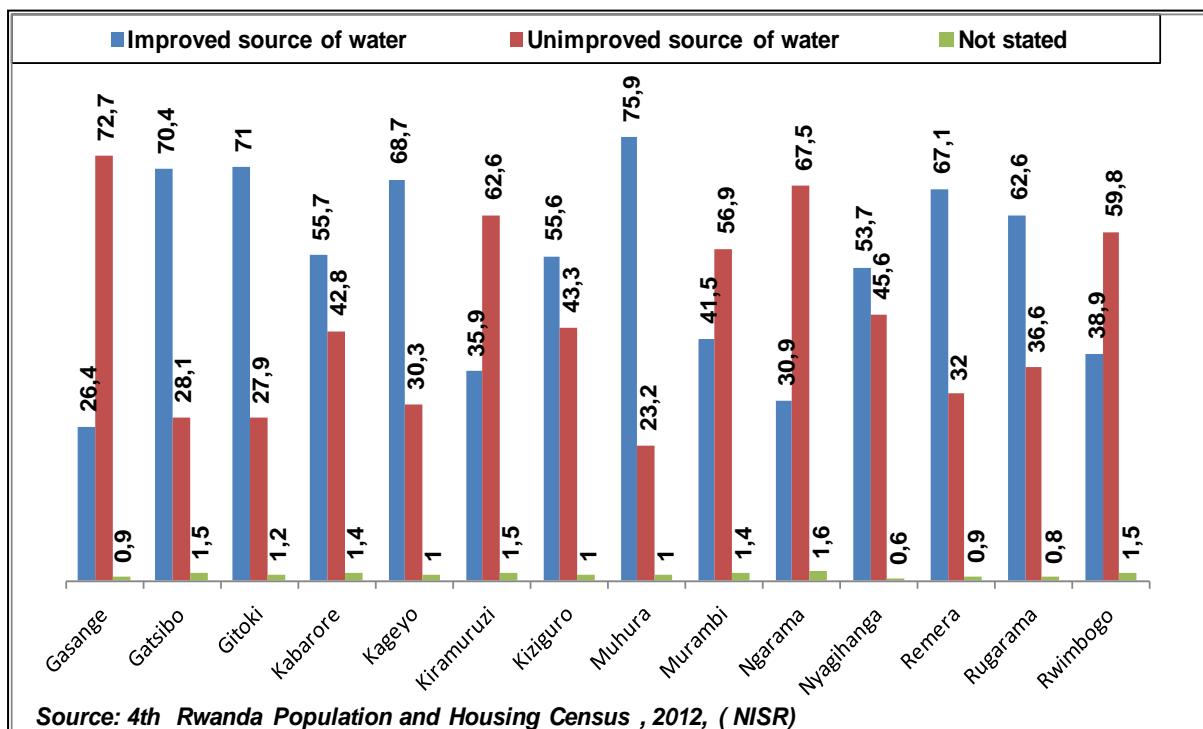
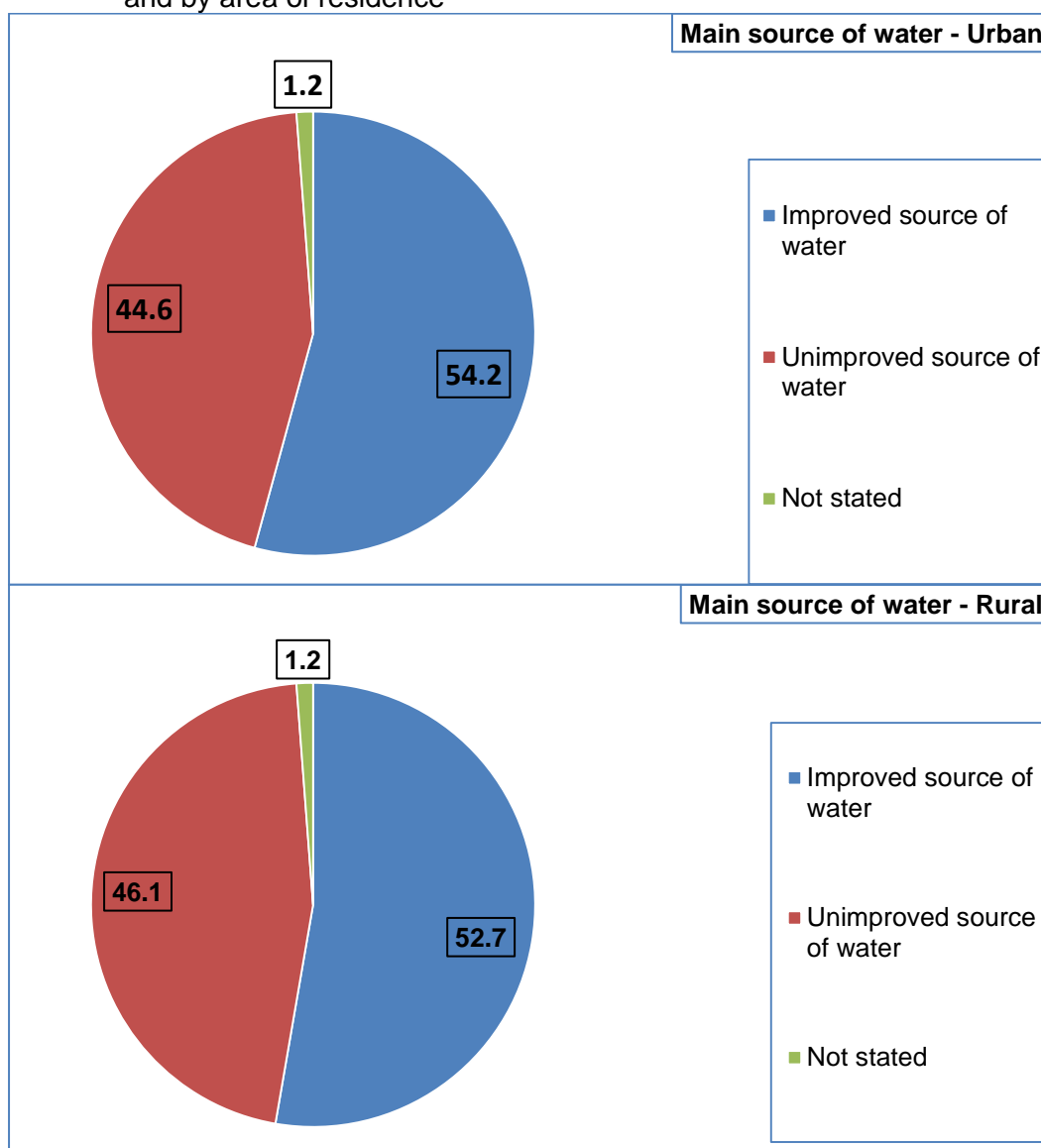


Figure 14: Distribution (%) of private households of Gatsibo district by main source of water and by area of residence



Source: Rwanda 4th Population and Housing Census, 2012 (NISR)

The main source of water used by the private households varies according to the area of residence.

- In rural areas, 52.7% of the private households use improved sources of water while in urban areas, 54.2% of them use improved water source.
- Non improved sources of water are used by 46.1% of private households in rural areas and 44.6% of private households in urban areas.

4.2.5.2. Main type of toilet facility

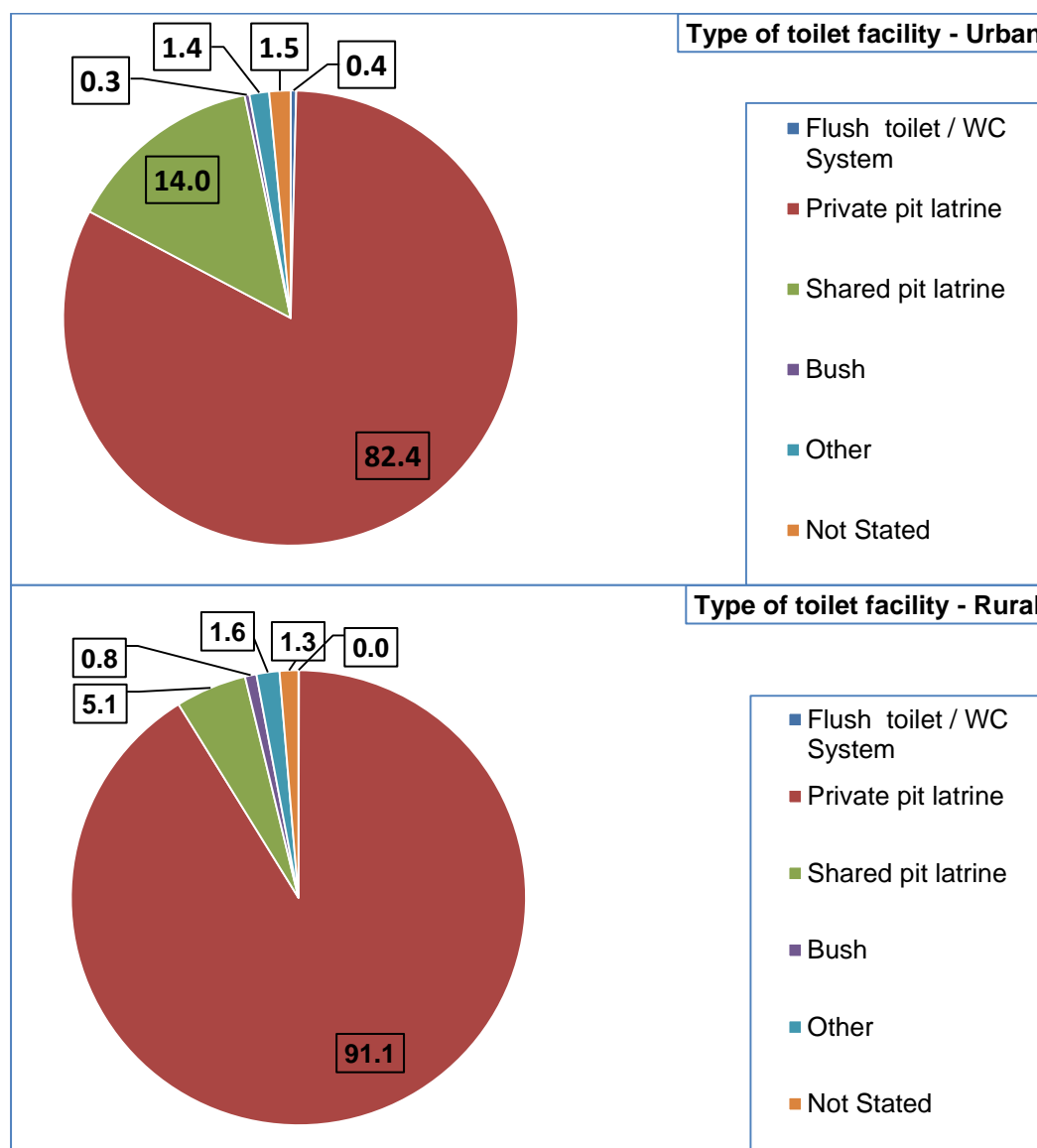
Table 39: Distribution (count and %) of private households of Gatsibo district by main type of toilet facility and by Sector

Sectors	Main type of toilet							
	Total number of private households	Total (%)	Flush toilet / WC System	Private pit latrine	Shared pit latrine	Bush	Other	Not Stated
Rwanda	2,424,898	100	0.8	82.4	12.4	0.9	1.7	1.7
Eastern Province	599,272	100	0.1	88.2	7.8	0.8	1.8	1.3
Gatsibo District	96,320	100	0.1	90.6	5.6	0.8	1.6	1.3
Gasange	3,841	100	0.0	94.5	2.5	0.7	1.4	0.9
Gatsibo	5,924	100	0.2	91.9	3.6	0.5	2.2	1.6
Gitoki	7,750	100	0.0	90.5	4.8	1.3	1.8	1.6
Kabarore	11,076	100	0.0	86.7	9.7	0.8	1.3	1.5
Kageyo	5,053	100	0.0	92.8	3.6	0.7	1.5	1.4
Kiramuruzi	7,404	100	0.1	84.2	11.9	0.8	1.7	1.3
Kiziguro	6,765	100	0.1	92.7	3.2	0.7	1.9	1.3
Muhura	6,761	100	0.1	91.7	4.4	0.9	1.3	1.6
Murambi	6,683	100	0.0	91.7	5.2	0.7	1.0	1.5
Ngarama	7,199	100	0.1	89.6	5.7	0.8	2.4	1.4
Nyagihanga	5,624	100	0.0	92.7	3.2	1.4	2.1	0.6
Remera	6,091	100	0.0	91.8	3.5	0.6	2.5	1.5
Rugarama	8,427	100	0.0	92.2	5.3	0.4	1.0	1.1
Rwimbogo	7,722	100	0.0	90.9	6.2	0.7	0.9	1.3

Source: Rwanda 4th Population and Housing Census, 2012 (NISR)

- At the district level the main types of toilet facility used by the private households are private pit latrine (90.6%) and shared pit latrine (5.6%). Only 0.1% of private households of the district are equipped with flush toilet/WC system.
- At the sector level, the proportion of households using private pit latrines is the highest in all sectors of the district. It varies between 84.2% and 94.5% for all other sectors.
- For the shared pit latrines, Kiramuruzi is the sector with the highest proportion of private households using this kind of toilet (11.9%). It varies between 2.5% and 10% in other sectors.

Figure 15: Distribution (%) of private households of Gatsibo district by main type of toilet facility and by area of residence



Source: Rwanda 4th Population and Housing Census, 2012 (NISR)

The type of toilet facility used in the private households varies according to the area of residence.

- In urban areas, the most used types of toilet are private pit latrine (82.4%) and shared pit latrine (14%).
- In rural areas, the main type of toilet used is the private pit latrine (91.1%) and to a lesser extent the shared pit latrine (5.1%).

4.2.5.3. Mode of waste disposal

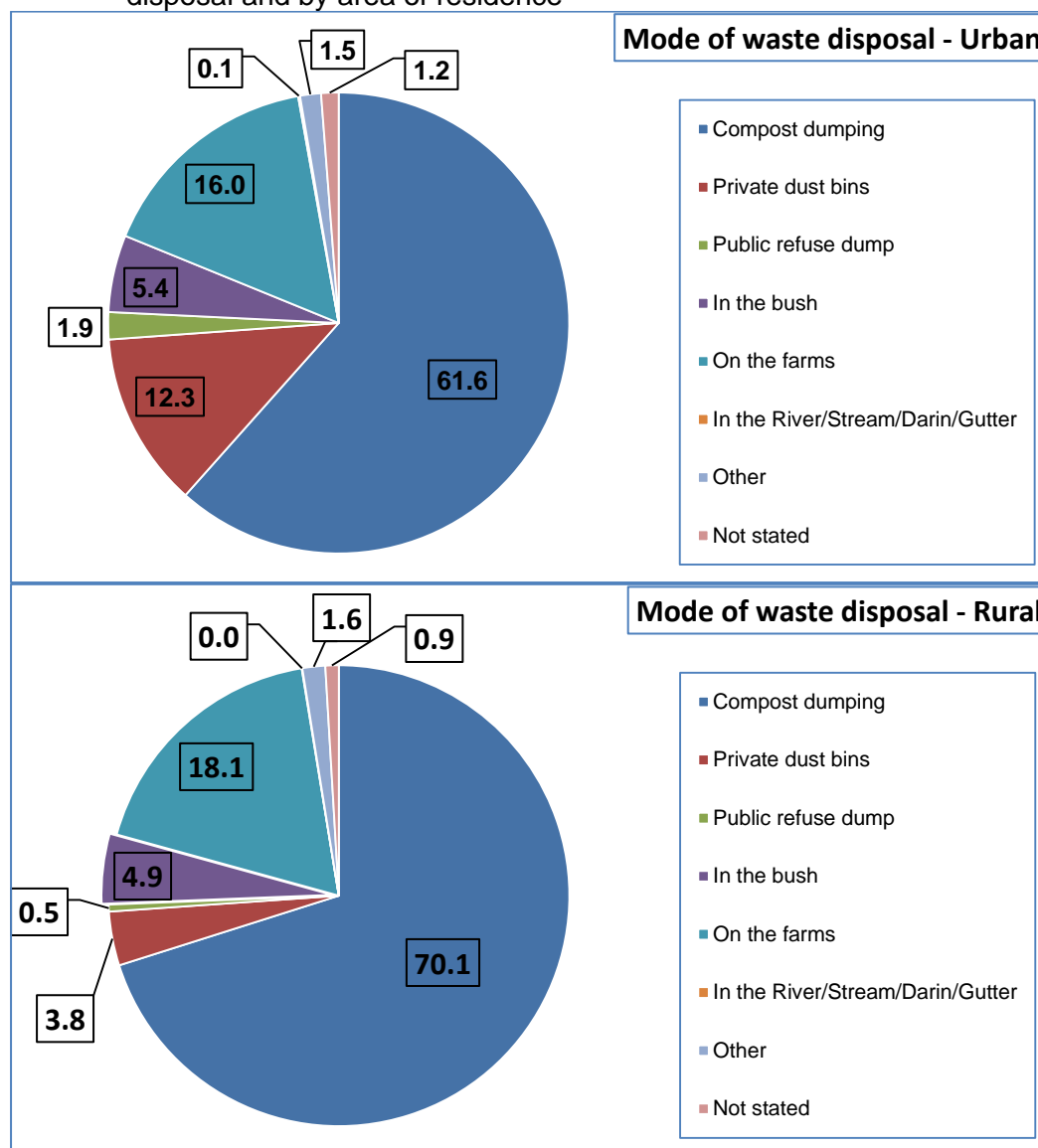
Table 40: Distribution (count and %) of private households of Gatsibo district by mode of waste disposal and by Sector

Sectors	Mode of waste disposal									
	Total (Count)	Total (%)	Compost dumping	Private dust bins	Public refuse dump	In the bush	On the farms	In the River/ Stream/ Darin/Gutter	Other	Not stated
Rwanda	2,424,898	100	57.2	8.7	1.2	6.9	23.7	0.1	1.3	0.9
Eastern Province	599,272	100	64.6	5.7	0.7	8.2	18.3	0.1	1.5	0.9
Gatsibo District	96,320	100	69.6	4.3	0.6	4.9	18.0	0.0	1.6	1.0
Gasange	3,841	100	53.3	5.6	0.3	3.3	35.1	0.0	1.1	1.3
Gatsibo	5,924	100	75.2	3.6	0.5	3.4	13.3	0.0	2.8	1.2
Gitoki	7,750	100	77.9	1.4	0.2	4.9	11.4	0.1	2.9	1.2
Kabarore	11,076	100	53.6	10.4	0.9	9.8	21.0	0.1	3.3	0.9
Kageyo	5,053	100	64.7	2.8	0.0	6.0	24.8	0.0	0.8	0.9
Kiramuruzi	7,404	100	65.8	7.1	1.2	4.3	19.5	0.0	0.9	1.1
Kiziguro	6,765	100	68.1	5.0	0.2	4.5	20.1	0.0	1.2	0.9
Muhura	6,761	100	69.6	1.2	0.3	2.9	24.8	0.1	0.5	0.7
Murambi	6,683	100	72.0	2.2	0.4	2.4	21.3	0.0	0.9	0.7
Ngarama	7,199	100	65.7	4.2	0.5	6.9	18.6	0.1	2.9	1.1
Nyagihanga	5,624	100	71.2	0.6	1.1	3.8	21.9	0.1	0.7	0.6
Remera	6,091	100	80.3	2.5	0.2	2.5	11.8	0.0	1.7	1.0
Rugarama	8,427	100	79.0	6.2	0.6	2.6	10.1	0.0	0.7	0.8
Rwimbogo	7,722	100	77.7	2.8	1.1	7.7	9.2	0.0	0.5	1.0

Source: Rwanda 4th Population and Housing Census, 2012 (NISR)

- In Gatsibo district the main modes of waste disposal used by the private households are the compost dumping (69.6%), the farms (18.0%), the bush (4.9%), and the private dust bins (4.3%).
- Sectors with the highest percentage of household using compost are Remera (80%), Rugarama (79%) and Gitoki (78%).
- Sectors with the highest proportions of households disposing their waste on the farms are Gasanga (35%), Kageyo, Muhura and Nyagihanga (22% each)
- Sectors with highest proportions of private households that discharge domestic waste in the bush are Kabarore (9.8%), Rwimbogo (7.7%) and Ngarama (6.9%).

Figure 16: Distribution (%) of private households of Gatsibo district by mode of waste disposal and by area of residence



Source: Rwanda 4th Population and Housing Census, 2012 (NISR)

The main modes of waste disposal used by the households vary by area of residence.

- Urban households evacuate their waste mainly in the private dust bins (61.6%), in the compost dumping (1.9%) or in the bush (5.4%).
- In rural areas, the households evacuate their waste mainly on the farms (18.1%), in compost dumping (70%) or in the bush (4.9%).

4.2.6. Assets possessed by private households

4.2.6.1. Communication assets

Table 41: Percentage of private households of Gatsibo district possessing communication assets by Sector

Sectors	Total number of private households	Radio	TV	Telephone (landline)	Mobile phone	Computer
Rwanda	2,424,898	64.0	7.8	0.5	54.1	2.4
Eastern Province	599,272	66.7	3.4	0.4	50.0	0.8
Gatsibo District	96,320	64.3	2.2	0.4	50.6	0.5
Gasange	3,841	66.1	0.7	0.2	41.4	0.2
Gatsibo	5,924	66.9	2.9	0.3	51.6	0.5
Gitoki	7,750	60.1	1.6	0.2	48.6	0.2
Kabarore	11,076	66.6	3.7	0.4	59.8	1.0
Kageyo	5,053	61.4	1.1	0.5	35.4	0.2
Kiramuruzi	7,404	63.7	6.6	0.3	58.7	1.2
Kiziguro	6,765	63.0	3.8	0.2	58.5	0.7
Muhura	6,761	66.8	1.7	0.1	46.2	0.5
Murambi	6,683	62.1	0.7	0.2	43.4	0.2
Ngarama	7,199	61.9	2.2	0.3	44.9	1.0
Nyagihanga	5,624	62.0	0.4	0.2	36.3	0.1
Remera	6,091	64.9	1.3	0.1	44.5	0.1
Rugarama	8,427	64.3	1.9	1.5	56.3	0.4
Rwimbogo	7,722	69.1	0.6	0.2	62.6	0.2

Source: Rwanda 4th Population and Housing Census, 2012 (NISR)

- At the district level 64.3% of private households possess a radio, 50.6% have a mobile phone, 2.2% a TV and 0.5% a computer.
- The percentage of private households possessing a radio is higher in Rwimbogo (69.1%) and lower in Gitoki (60.1%) and Kageyo (61.4%).
- Mobile phone is more common among Rwimbogo's households (62.6%) and less common in Kageyo (35.4%).
- TV is more widespread among the Kiramuruzi's households (6.6%) and less than 3% among the remaining sectors.

4.2.6.2. Access to the Internet

Table 42: Percentages of private households of Gatsibo district that have access to the internet by place of access and by Sector

Sectors	Total number of private households	Home	Office/School	Cyber-café	Other
Rwanda	2,424,898	42.3	52.7	57.6	17.7
Eastern Province	599,272	34.7	51.4	51.8	21.6
Gatsibo District	96,320	46.7	57.3	43.4	21.9
Gasange	3,841	37.5	70.3	37.5	46.9
Gatsibo	5,924	56.6	65.9	45.4	28.3
Gitoki	7,750	55.8	43.6	49.7	36.5
Kabarore	11,076	49.1	52.2	59.9	28.9
Kageyo	5,053	22.4	55.2	50.0	10.3
Kiramuruzi	7,404	51.7	57.2	38.1	15.4
Kiziguro	6,765	37.6	53.5	54.0	10.4
Muhura	6,761	32.5	72.0	33.1	12.7
Murambi	6,683	50.7	64.4	21.9	20.5
Ngarama	7,199	51.8	59.1	43.3	20.2
Nyagihanga	5,624	22.5	57.5	27.5	17.5
Remera	6,091	42.9	59.2	27.6	11.2
Rugarama	8,427	50.0	52.9	31.6	23.6
Rwimbogo	7,722	34.7	61.3	29.8	20.2

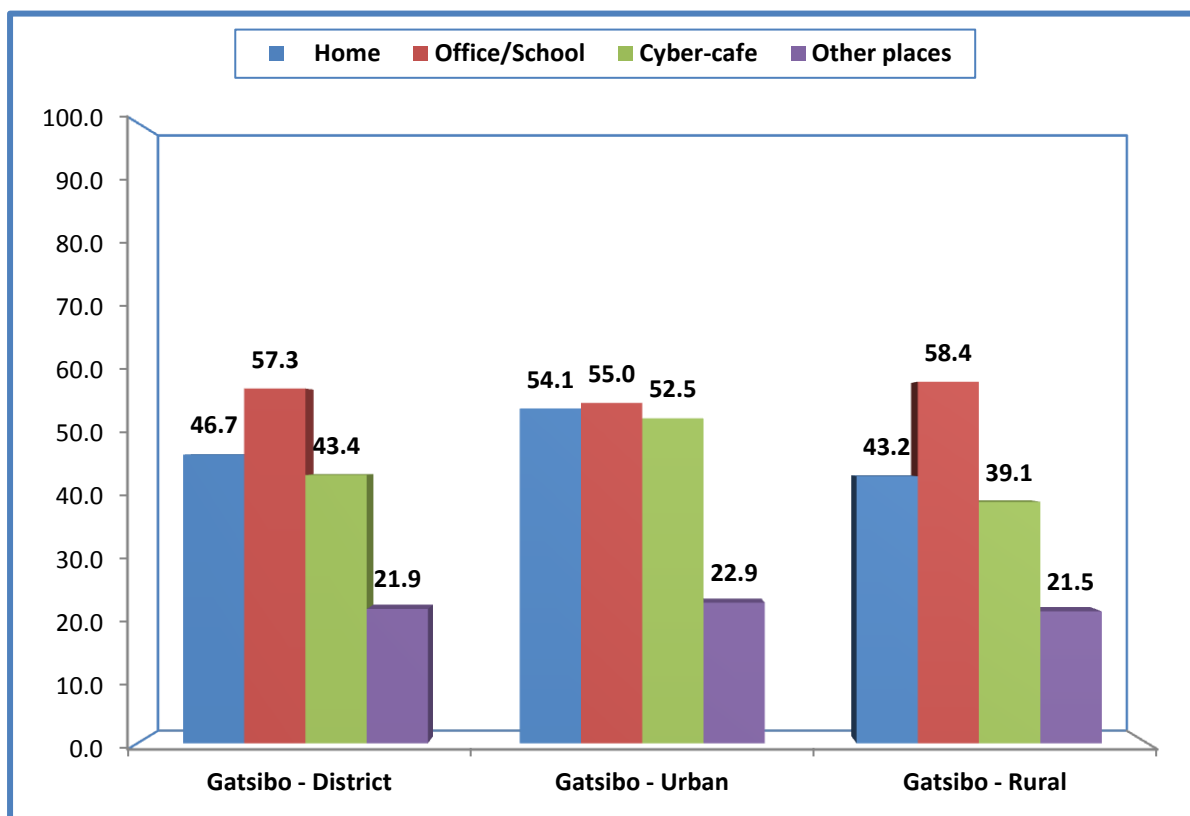
Source: Rwanda 4th Population and Housing Census, 2012 (NISR)

- At the district level, private households mainly access internet at office or school (57.3%), home (46.7%) and cyber-cafes (43.4%).

At the sector level,

- Sectors with the highest proportions of private households with access to internet through Cyber-cafe are Kabarore (59.9%), Kiziguro (54%), Kageyo (50%) and Gitoki(49.7%).
- Sectors with the highest proportions of private households with access to internet at home are Gatsibo (56.6%), Gitoki (55.8%) and Nyagihanga (51.8%).
- Sectors with the highest proportions of private households with access to internet from office or school are Muhura (72%), Gasange (70.3%) and Gatsibo (65.9%)

Figure 17: Percentage of private households whose at least one member have access to the Internet from home, office/school, cyber café and other by area of residence



Source: Rwanda 4th Population and Housing Census, 2012 (NISR)

Access to the Internet varies greatly depending on the area of residence.

- In urban areas, private households access the Internet mainly in cyber cafe (67%),
- In rural areas, private households access the Internet mainly in office or at school (48%) and through cyber cafes (47%).

ANNEXES

Table 43: Distribution (count and %) of resident population of Gatsibo district by Single age and Sex

Age	Count			%		
	Both sexes	Male	Female	Both sexes	Male	Female
Total	433,020	207,669	225,351	100	100	100
0	12,410	6,102	6,308	2.9	2.9	2.8
1	13,137	6,552	6,585	3.0	3.2	2.9
2	12,123	6,031	6,092	2.8	2.9	2.7
3	13,967	6,894	7,073	3.2	3.3	3.1
4	14,615	7,198	7,417	3.4	3.5	3.3
5	14,091	6,951	7,140	3.3	3.3	3.2
6	14,630	7,212	7,418	3.4	3.5	3.3
7	13,889	6,941	6,948	3.2	3.3	3.1
8	12,593	6,185	6,408	2.9	3.0	2.8
9	12,318	6,155	6,163	2.8	3.0	2.7
10	12,910	6,323	6,587	3.0	3.0	2.9
11	9,705	4,815	4,890	2.2	2.3	2.2
12	13,396	6,642	6,754	3.1	3.2	3.0
13	9,895	4,890	5,005	2.3	2.4	2.2
14	9,356	4,609	4,747	2.2	2.2	2.1
15	10,078	4,974	5,104	2.3	2.4	2.3
16	10,370	5,099	5,271	2.4	2.5	2.3
17	7,994	4,040	3,954	1.8	1.9	1.8
18	10,245	5,072	5,173	2.4	2.4	2.3
19	7,091	3,464	3,627	1.6	1.7	1.6
20	8,873	4,399	4,474	2.0	2.1	2.0
21	7,088	3,392	3,696	1.6	1.6	1.6
22	9,119	4,502	4,617	2.1	2.2	2.0
23	7,161	3,502	3,659	1.7	1.7	1.6
24	7,547	3,665	3,882	1.7	1.8	1.7
25	7,037	3,443	3,594	1.6	1.7	1.6
26	6,859	3,191	3,668	1.6	1.5	1.6
27	6,917	3,469	3,448	1.6	1.7	1.5
28	7,326	3,513	3,813	1.7	1.7	1.7
29	5,912	2,890	3,022	1.4	1.4	1.3
30	7,994	3,842	4,152	1.8	1.9	1.8
31	5,118	2,436	2,682	1.2	1.2	1.2
32	5,819	2,799	3,020	1.3	1.3	1.3
33	4,431	2,046	2,385	1.0	1.0	1.1
34	4,545	1,974	2,571	1.0	1.0	1.1
35	5,092	2,319	2,773	1.2	1.1	1.2
36	4,016	1,766	2,250	0.9	0.9	1.0
37	4,287	1,908	2,379	1.0	0.9	1.1

Age	Count			%		
	Both sexes	Male	Female	Both sexes	Male	Female
38	4,241	1,874	2,367	1.0	0.9	1.1
39	3,742	1,662	2,080	0.9	0.8	0.9
40	4,680	2,060	2,620	1.1	1.0	1.2
41	3,235	1,446	1,789	0.7	0.7	0.8
42	3,798	1,746	2,052	0.9	0.8	0.9
43	3,033	1,364	1,669	0.7	0.7	0.7
44	3,404	1,529	1,875	0.8	0.7	0.8
45	2,963	1,323	1,640	0.7	0.6	0.7
46	2,880	1,295	1,585	0.7	0.6	0.7
47	2,467	1,129	1,338	0.6	0.5	0.6
48	3,091	1,389	1,702	0.7	0.7	0.8
49	2,744	1,244	1,500	0.6	0.6	0.7
50	3,811	1,636	2,175	0.9	0.8	1.0
51	1,887	838	1,049	0.4	0.4	0.5
52	2,831	1,213	1,618	0.7	0.6	0.7
53	2,583	1,195	1,388	0.6	0.6	0.6
54	2,360	1,114	1,246	0.5	0.5	0.6
55	2,041	948	1,093	0.5	0.5	0.5
56	2,087	857	1,230	0.5	0.4	0.5
57	1,966	901	1,065	0.5	0.4	0.5
58	1,839	826	1,013	0.4	0.4	0.4
59	1,613	711	902	0.4	0.3	0.4
60	2,195	922	1,273	0.5	0.4	0.6
61	1,075	460	615	0.2	0.2	0.3
62	1,579	741	838	0.4	0.4	0.4
63	900	413	487	0.2	0.2	0.2
64	979	433	546	0.2	0.2	0.2
65	896	390	506	0.2	0.2	0.2
66	920	326	594	0.2	0.2	0.3
67	917	347	570	0.2	0.2	0.3
68	854	322	532	0.2	0.2	0.2
69	528	217	311	0.1	0.1	0.1
70	1,302	493	809	0.3	0.2	0.4
71	486	185	301	0.1	0.1	0.1
72	1,025	421	604	0.2	0.2	0.3
73	470	198	272	0.1	0.1	0.1
74	458	188	270	0.1	0.1	0.1
75	517	200	317	0.1	0.1	0.1
76	553	207	346	0.1	0.1	0.2
77	439	180	259	0.1	0.1	0.1
78	398	176	222	0.1	0.1	0.1
79	321	140	181	0.1	0.1	0.1

Age	Count			%		
	Both sexes	Male	Female	Both sexes	Male	Female
80	524	180	344	0.1	0.1	0.2
81	269	109	160	0.1	0.1	0.1
82	535	236	299	0.1	0.1	0.1
83	144	70	74	0.0	0.0	0.0
84	199	89	110	0.0	0.0	0.0
85	179	69	110	0.0	0.0	0.0
86	197	65	132	0.0	0.0	0.1
87	135	49	86	0.0	0.0	0.0
88	82	30	52	0.0	0.0	0.0
89	57	26	31	0.0	0.0	0.0
90	120	57	63	0.0	0.0	0.0
91	75	36	39	0.0	0.0	0.0
92	145	60	85	0.0	0.0	0.0
93	26	11	15	0.0	0.0	0.0
94	32	15	17	0.0	0.0	0.0
95	29	12	17	0.0	0.0	0.0
96	36	16	20	0.0	0.0	0.0
97	14	4	10	0.0	0.0	0.0
98	20	8	12	0.0	0.0	0.0
99	8	4	4	0.0	0.0	0.0
100	39	17	22	0.0	0.0	0.0
101	20	12	8	0.0	0.0	0.0
102	22	6	16	0.0	0.0	0.0
103	4	3	1	0.0	0.0	0.0
104	5	0	5	0.0	0.0	0.0
105	6	2	4	0.0	0.0	0.0
106	3	2	1	0.0	0.0	0.0
107	1	0	1	0.0	0.0	0.0
108	3	2	1	0.0	0.0	0.0
109	1	0	1	0.0	0.0	0.0
110	3	2	1	0.0	0.0	0.0
112	5	3	2	0.0	0.0	0.0
113	2	1	1	0.0	0.0	0.0
114	5	5	0	0.0	0.0	0.0
115	5	3	2	0.0	0.0	0.0
118	1	0	1	0.0	0.0	0.0
119	1	0	1	0.0	0.0	0.0
120	5	1	4	0.0	0.0	0.0
122	1	0	1	0.0	0.0	0.0

Source: Rwanda 4th Population and Housing Census, 2012, (NISR)

Age-sex structure for all sectors

Table 44: Distribution (count and %) of resident population of Gatsibo district by 5-year age group and sex

Gasange Sector

Five -years age group	Counts			Percentage		
	Both sexes	Male	Female	Both sexes	Male	Female
Total	17,783	8,537	9,246	100	100	100
0-4	2,691	1,316	1,375	15.1	15.4	14.9
5-9	2,965	1,459	1,506	16.7	17.1	16.3
10-14	2,451	1,208	1,243	13.8	14.2	13.4
15-19	1,776	892	884	10.0	10.4	9.6
20-24	1,463	693	770	8.2	8.1	8.3
25-29	1,243	607	636	7.0	7.1	6.9
30-34	1,061	475	586	6.0	5.6	6.3
35-39	859	389	470	4.8	4.6	5.1
40-44	811	362	449	4.6	4.2	4.9
45-49	568	281	287	3.2	3.3	3.1
50-54	604	294	310	3.4	3.4	3.4
55-59	390	197	193	2.2	2.3	2.1
60-64	229	104	125	1.3	1.2	1.4
65-69	179	57	122	1.0	0.7	1.3
70-74	221	81	140	1.2	0.9	1.5
75-79	116	45	71	0.7	0.5	0.8
80-84	96	43	53	0.5	0.5	0.6
85+	60	34	26	0.3	0.4	0.3

Source: Rwanda 4th Population and Housing Census, 2012, (NISR)

Gatsibo Sector

Five -years age group	Counts			Percentage		
	Both sexes	Male	Female	Both sexes	Male	Female
Total	36,690	17,496	19,194	100	100	100
0-4	5,351	2,643	2,708	14.6	15.1	14.1
5-9	5,931	2,941	2,990	16.2	16.8	15.6
10-14	5,039	2,520	2,519	13.7	14.4	13.1
15-19	4,243	2,078	2,165	11.6	11.9	11.3
20-24	3,122	1,446	1,676	8.5	8.3	8.7
25-29	2,620	1,174	1,446	7.1	6.7	7.5
30-34	2,218	988	1,230	6.0	5.6	6.4
35-39	1,807	787	1,020	4.9	4.5	5.3
40-44	1,456	682	774	4.0	3.9	4.0
45-49	1,223	583	640	3.3	3.3	3.3
50-54	1,175	546	629	3.2	3.1	3.3
55-59	852	383	469	2.3	2.2	2.4
60-64	631	308	323	1.7	1.8	1.7
65-69	332	137	195	0.9	0.8	1.0
70-74	310	128	182	0.8	0.7	0.9
75-79	149	69	80	0.4	0.4	0.4
80-84	128	46	82	0.3	0.3	0.4
85+	103	37	66	0.3	0.2	0.3

Source: Rwanda 4th Population and Housing Census, 2012, (NISR)

Gitoki Sector

Five -years age group	Count			Percentage		
	Both sexes	Male	Female	Both sexes	Male	Female
Total	33,409	15,836	17,573	100	100	100
0-4	5,449	2,671	2,778	16.3	16.9	15.8
5-9	5,352	2,625	2,727	16.0	16.6	15.5
10-14	4,307	2,090	2,217	12.9	13.2	12.6
15-19	3,320	1,631	1,689	9.9	10.3	9.6
20-24	2,903	1,389	1,514	8.7	8.8	8.6
25-29	2,598	1,220	1,378	7.8	7.7	7.8
30-34	2,256	1,054	1,202	6.8	6.7	6.8
35-39	1,695	762	933	5.1	4.8	5.3
40-44	1,419	629	790	4.2	4.0	4.5
45-49	1,032	469	563	3.1	3.0	3.2
50-54	983	439	544	2.9	2.8	3.1
55-59	718	310	408	2.1	2.0	2.3
60-64	486	198	288	1.5	1.3	1.6
65-69	294	114	180	0.9	0.7	1.0
70-74	252	91	161	0.8	0.6	0.9
75-79	147	70	77	0.4	0.4	0.4
80-84	118	39	79	0.4	0.2	0.4
85+	80	35	45	0.2	0.2	0.3

Source: Rwanda 4th Population and Housing Census, 2012, (NISR)

Kabarore Sector

Five -years age group	Count			Percentage		
	Both sexes	Male	Female	Both sexes	Male	Female
Total	50,288	24,842	25,446	100	100	100
0-4	7,997	3,933	4,064	15.9	15.8	16.0
5-9	7,585	3,803	3,782	15.1	15.3	14.9
10-14	6,566	3,210	3,356	13.1	12.9	13.2
15-19	5,241	2,597	2,644	10.4	10.5	10.4
20-24	4,909	2,644	2,265	9.8	10.6	8.9
25-29	4,119	2,144	1,975	8.2	8.6	7.8
30-34	3,448	1,660	1,788	6.9	6.7	7.0
35-39	2,535	1,178	1,357	5.0	4.7	5.3
40-44	2,011	966	1,045	4.0	3.9	4.1
45-49	1,487	706	781	3.0	2.8	3.1
50-54	1,404	660	744	2.8	2.7	2.9
55-59	965	458	507	1.9	1.8	2.0
60-64	724	332	392	1.4	1.3	1.5
65-69	444	190	254	0.9	0.8	1.0
70-74	358	150	208	0.7	0.6	0.8
75-79	198	89	109	0.4	0.4	0.4
80-84	154	61	93	0.3	0.2	0.4
85+	143	61	82	0.3	0.2	0.3

Source: Rwanda 4th Population and Housing Census, 2012, (NISR)

Kageyo Sector

Five -years age group	Count			Percentage		
	Both sexes	Male	Female	Both sexes	Male	Female
Total	21,567	10,332	11,235	100	100	100
0-4	3,337	1,622	1,715	15.5	15.7	15.3
5-9	3,459	1,756	1,703	16.0	17.0	15.2
10-14	2,685	1,306	1,379	12.4	12.6	12.3
15-19	2,029	1,031	998	9.4	10.0	8.9
20-24	1,983	910	1,073	9.2	8.8	9.6
25-29	1,715	790	925	8.0	7.6	8.2
30-34	1,349	624	725	6.3	6.0	6.5
35-39	1,038	498	540	4.8	4.8	4.8
40-44	891	430	461	4.1	4.2	4.1
45-49	746	360	386	3.5	3.5	3.4
50-54	694	321	373	3.2	3.1	3.3
55-59	548	241	307	2.5	2.3	2.7
60-64	394	174	220	1.8	1.7	2.0
65-69	243	97	146	1.1	0.9	1.3
70-74	182	69	113	0.8	0.7	1.0
75-79	132	44	88	0.6	0.4	0.8
80-84	89	39	50	0.4	0.4	0.4
85+	53	20	33	0.2	0.2	0.3

Source: Rwanda 4th Population and Housing Census, 2012, (NISR)

Kiramuruzi Sector

Five -years age group	Count			Percentage		
	Both sexes	Male	Female	Both sexes	Male	Female
Total	31,083	14,803	16,280	100	100	100
0-4	4,709	2,409	2,300	15.1	16.3	14.1
5-9	4,493	2,250	2,243	14.5	15.2	13.8
10-14	3,496	1,699	1,797	11.2	11.5	11.0
15-19	3,484	1,702	1,782	11.2	11.5	10.9
20-24	3,394	1,646	1,748	10.9	11.1	10.7
25-29	2,571	1,324	1,247	8.3	8.9	7.7
30-34	2,052	1,011	1,041	6.6	6.8	6.4
35-39	1,439	612	827	4.6	4.1	5.1
40-44	1,366	565	801	4.4	3.8	4.9
45-49	1,009	410	599	3.2	2.8	3.7
50-54	922	375	547	3.0	2.5	3.4
55-59	652	261	391	2.1	1.8	2.4
60-64	468	175	293	1.5	1.2	1.8
65-69	317	100	217	1.0	0.7	1.3
70-74	308	107	201	1.0	0.7	1.2
75-79	185	76	109	0.6	0.5	0.7
80-84	113	42	71	0.4	0.3	0.4
85+	105	39	66	0.3	0.3	0.4

Source: Rwanda 4th Population and Housing Census, 2012, (NISR)

Kiziguro Sector

Five -years age group	Count			Percentage		
	Both sexes	Male	Female	Both sexes	Male	Female
Total	29,996	14,280	15,716	100	100	100
0-4	4,563	2,245	2,318	15.2	15.7	14.7
5-9	4,379	2,188	2,191	14.6	15.3	13.9
10-14	3,463	1,732	1,731	11.5	12.1	11.0
15-19	3,487	1,719	1,768	11.6	12.0	11.2
20-24	2,963	1,477	1,486	9.9	10.3	9.5
25-29	2,378	1,151	1,227	7.9	8.1	7.8
30-34	1,838	892	946	6.1	6.2	6.0
35-39	1,490	660	830	5.0	4.6	5.3
40-44	1,256	543	713	4.2	3.8	4.5
45-49	998	409	589	3.3	2.9	3.7
50-54	907	389	518	3.0	2.7	3.3
55-59	657	264	393	2.2	1.8	2.5
60-64	495	191	304	1.7	1.3	1.9
65-69	361	125	236	1.2	0.9	1.5
70-74	303	122	181	1.0	0.9	1.2
75-79	196	77	119	0.7	0.5	0.8
80-84	144	52	92	0.5	0.4	0.6
85+	118	44	74	0.4	0.3	0.5

Source: Rwanda 4th Population and Housing Census, 2012, (NISR)

Muhura Sector

Five -years age group	Count			Percentage		
	Both sexes	Male	Female	Both sexes	Male	Female
Total	29 568	14 139	15 429	100,0	100,0	100,0
0-4	4 107	2 031	2 076	13,9	14,4	13,5
5-9	4 801	2 375	2 426	16,2	16,8	15,7
10-14	4 207	2 058	2 149	14,2	14,6	13,9
15-19	3 050	1 520	1 530	10,3	10,8	9,9
20-24	2 580	1 214	1 366	8,7	8,6	8,9
25-29	2 214	1 103	1 111	7,5	7,8	7,2
30-34	1 861	881	980	6,3	6,2	6,4
35-39	1 473	636	837	5,0	4,5	5,4
40-44	1 241	579	662	4,2	4,1	4,3
45-49	908	405	503	3,1	2,9	3,3
50-54	905	384	521	3,1	2,7	3,4
55-59	712	320	392	2,4	2,3	2,5
60-64	460	223	237	1,6	1,6	1,5
65-69	286	107	179	1,0	0,8	1,2
70-74	288	111	177	1,0	0,8	1,1
75-79	185	72	113	0,6	0,5	0,7
80-84	163	65	98	0,6	0,5	0,6
85+	127	55	72	0,4	0,4	0,5

Source: Rwanda 4th Population and Housing Census, 2012, (NISR)

Murambi Sector

Five -years age group	Count			Percentage		
	Both sexes	Male	Female	Both sexes	Male	Female
Total	29 032	13 642	15 390	100,0	100,0	100,0
0-4	4 784	2 363	2 421	16,5	17,3	15,7
5-9	4 558	2 212	2 346	15,7	16,2	15,2
10-14	3 309	1 635	1 674	11,4	12,0	10,9
15-19	2 832	1 412	1 420	9,8	10,4	9,2
20-24	2 794	1 319	1 475	9,6	9,7	9,6
25-29	2 354	1 175	1 179	8,1	8,6	7,7
30-34	1 910	907	1 003	6,6	6,6	6,5
35-39	1 307	545	762	4,5	4,0	5,0
40-44	1 247	516	731	4,3	3,8	4,7
45-49	1 006	396	610	3,5	2,9	4,0
50-54	938	368	570	3,2	2,7	3,7
55-59	628	279	349	2,2	2,0	2,3
60-64	453	170	283	1,6	1,2	1,8
65-69	274	98	176	0,9	0,7	1,1
70-74	266	101	165	0,9	0,7	1,1
75-79	165	55	110	0,6	0,4	0,7
80-84	119	53	66	0,4	0,4	0,4
85+	88	38	50	0,3	0,3	0,3

Source: Rwanda 4th Population and Housing Census, 2012, (NISR)

Ngarama Sector

Five -years age group	Count			Percentage		
	Both sexes	Male	Female	Both sexes	Male	Female
Total	30,354	14,423	15,931	100	100	100
0-4	4,758	2,365	2,393	15.7	16.4	15.0
5-9	4,808	2,353	2,455	15.8	16.3	15.4
10-14	3,787	1,818	1,969	12.5	12.6	12.4
15-19	3,148	1,520	1,628	10.4	10.5	10.2
20-24	2,584	1,249	1,335	8.5	8.7	8.4
25-29	2,450	1,131	1,319	8.1	7.8	8.3
30-34	2,237	1,040	1,197	7.4	7.2	7.5
35-39	1,627	743	884	5.4	5.2	5.5
40-44	1,323	613	710	4.4	4.3	4.5
45-49	1,003	463	540	3.3	3.2	3.4
50-54	894	406	488	2.9	2.8	3.1
55-59	634	268	366	2.1	1.9	2.3
60-64	420	200	220	1.4	1.4	1.4
65-69	259	95	164	0.9	0.7	1.0
70-74	194	78	116	0.6	0.5	0.7
75-79	96	35	61	0.3	0.2	0.4
80-84	76	33	43	0.3	0.2	0.3
85+	56	13	43	0.2	0.1	0.3

Source: Rwanda 4th Population and Housing Census, 2012, (NISR)

Nyagihanga Sector

Five-year age groups	Count			%		
	Both sexes	Male	Female	Both sexes	Male	Female
Total	24,159	11,548	12,611	100	100	100
0-4	3,274	1,636	1,638	13.6	14.2	13.0
5-9	3,603	1,731	1,872	14.9	15.0	14.8
10-14	3,189	1,564	1,625	13.2	13.5	12.9
15-19	2,704	1,331	1,373	11.2	11.5	10.9
20-24	2,143	1,058	1,085	8.9	9.2	8.6
25-29	1,939	913	1,026	8.0	7.9	8.1
30-34	1,371	627	744	5.7	5.4	5.9
35-39	1,207	521	686	5.0	4.5	5.4
40-44	1,048	482	566	4.3	4.2	4.5
45-49	833	383	450	3.4	3.3	3.6
50-54	915	441	474	3.8	3.8	3.8
55-59	675	314	361	2.8	2.7	2.9
60-64	451	213	238	1.9	1.8	1.9
65-69	253	112	141	1.0	1.0	1.1
70-74	223	87	136	0.9	0.8	1.1
75-79	162	70	92	0.7	0.6	0.7
80-84	96	38	58	0.4	0.3	0.5
85+	73	27	46	0.3	0.2	0.4

Source: Rwanda 4th Population and Housing Census, 2012, (NISR)

Remera Sector

Five -years age group	Count			Percentage		
	Both sexes	Male	Female	Both sexes	Male	Female
Total	26 110	12 429	13 681	100,0	100,0	100,0
0-4	3 969	1 971	1 998	15,2	15,9	14,6
5-9	4 152	2 041	2 111	15,9	16,4	15,4
10-14	3 381	1 707	1 674	12,9	13,7	12,2
15-19	2 519	1 249	1 270	9,6	10,0	9,3
20-24	2 366	1 177	1 189	9,1	9,5	8,7
25-29	2 142	1 005	1 137	8,2	8,1	8,3
30-34	1 637	771	866	6,3	6,2	6,3
35-39	1 285	602	683	4,9	4,8	5,0
40-44	1 065	435	630	4,1	3,5	4,6
45-49	868	366	502	3,3	2,9	3,7
50-54	777	314	463	3,0	2,5	3,4
55-59	624	260	364	2,4	2,1	2,7
60-64	422	179	243	1,6	1,4	1,8
65-69	275	99	176	1,1	0,8	1,3
70-74	246	95	151	0,9	0,8	1,1
75-79	150	60	90	0,6	0,5	0,7
80-84	130	56	74	0,5	0,5	0,5
85+	102	42	60	0,4	0,3	0,4

Source: Rwanda 4th Population and Housing Census, 2012, (NISR)

Rugarama Sector

Five -years age group	Count			Percentage		
	Both sexes	Male	Female	Both sexes	Male	Female
Total	37 029	17 867	19 162	100,0	100,0	100,0
0-4	5 688	2 793	2 895	15,4	15,6	15,1
5-9	5 606	2 857	2 749	15,1	16,0	14,3
10-14	4 600	2 372	2 228	12,4	13,3	11,6
15-19	4 021	1 994	2 027	10,9	11,2	10,6
20-24	3 449	1 664	1 785	9,3	9,3	9,3
25-29	2 942	1 430	1 512	7,9	8,0	7,9
30-34	2 355	1 078	1 277	6,4	6,0	6,7
35-39	1 867	846	1 021	5,0	4,7	5,3
40-44	1 516	664	852	4,1	3,7	4,4
45-49	1 249	566	683	3,4	3,2	3,6
50-54	1 258	531	727	3,4	3,0	3,8
55-59	790	358	432	2,1	2,0	2,3
60-64	596	258	338	1,6	1,4	1,8
65-69	353	149	204	1,0	0,8	1,1
70-74	319	137	182	0,9	0,8	0,9
75-79	187	72	115	0,5	0,4	0,6
80-84	142	62	80	0,4	0,3	0,4
85+	91	36	55	0,2	0,2	0,3

Source: Rwanda 4th Population and Housing Census, 2012, (NISR)

Rwimbogo Sector

Five -years age group	Count			Percentage		
	Both sexes	Male	Female	Both sexes	Male	Female
Total	35 952	17 495	18 457	100,0	100,0	100,0
0-4	5 575	2 779	2 796	15,5	15,9	15,1
5-9	5 829	2 853	2 976	16,2	16,3	16,1
10-14	4 782	2 360	2 422	13,3	13,5	13,1
15-19	3 924	1 973	1 951	10,9	11,3	10,6
20-24	3 135	1 574	1 561	8,7	9,0	8,5
25-29	2 766	1 339	1 427	7,7	7,7	7,7
30-34	2 314	1 089	1 225	6,4	6,2	6,6
35-39	1 749	750	999	4,9	4,3	5,4
40-44	1 500	679	821	4,2	3,9	4,4
45-49	1 215	583	632	3,4	3,3	3,4
50-54	1 096	528	568	3,0	3,0	3,1
55-59	701	330	371	1,9	1,9	2,0
60-64	499	244	255	1,4	1,4	1,4
65-69	245	122	123	0,7	0,7	0,7
70-74	271	128	143	0,8	0,7	0,8
75-79	160	69	91	0,4	0,4	0,5
80-84	103	55	48	0,3	0,3	0,3
85+	88	40	48	0,2	0,2	0,3

Source: Rwanda 4th Population and Housing Census, 2012, (NISR)

Table 45: Distribution (%) of resident population of Gatsibo district aged 12 years and above by Marital status, Sector and Sex [Male]

	Total	Never married	Married	Separated	Widowed	Divorced	Not Stated
Count							
Rwanda	3,284,937	1,655,398	1,557,403	6,916	41,028	23,326	866
Eastern Province	794,955	386,001	389,630	2,044	9,499	7,604	177
Gatsibo district	104,285	51,618	50,164	230	1,226	1,017	30
Gahini	9,996	5,308	4,493	34	96	64	1
Kabare	10,256	4,863	5,192	24	90	85	2
Kabarondo	9,484	4,843	4,435	18	103	81	4
Mukarange	13,225	7,055	5,846	20	152	150	2
Murama	5,900	2,811	2,926	13	71	78	1
Murundi	10,826	5,066	5,454	29	140	132	5
Mwiri	6,875	3,208	3,491	13	96	64	3
Ndego	5,728	2,585	3,040	7	51	43	2
Nyamirama	9,018	4,457	4,316	20	133	89	3
Rukara	9,396	4,934	4,224	17	133	87	1
Ruramira	4,846	2,287	2,403	14	82	58	2
Rwinkwavu	8,735	4,201	4,344	21	79	86	4
%							
	Total	Never married	Married	Separated	Widowed	Divorced	Not Stated
Rwanda	100	50.4	47.4	0.2	1.2	0.7	0.0
Eastern Province	100	48.6	49.0	0.3	1.2	1.0	0.0
Gatsibo district	100	49.5	48.1	0.2	1.2	1.0	0.0
Gahini	100	53.1	44.9	0.3	1.0	0.6	0.0
Kabare	100	47.4	50.6	0.2	0.9	0.8	0.0
Kabarondo	100	51.1	46.8	0.2	1.1	0.9	0.0
Mukarange	100	53.3	44.2	0.2	1.1	1.1	0.0
Murama	100	47.6	49.6	0.2	1.2	1.3	0.0
Murundi	100	46.8	50.4	0.3	1.3	1.2	0.0
Mwiri	100	46.7	50.8	0.2	1.4	0.9	0.0
Ndego	100	45.1	53.1	0.1	0.9	0.8	0.0
Nyamirama	100	49.4	47.9	0.2	1.5	1.0	0.0
Rukara	100	52.5	45.0	0.2	1.4	0.9	0.0
Ruramira	100	47.2	49.6	0.3	1.7	1.2	0.0
Rwinkwavu	100	48.1	49.7	0.2	0.9	1.0	0.0

Source: Rwanda 4th Population and Housing Census, 2012 (NISR)

Table 46: Distribution (%) of resident population of Gatsibo district aged 12 years and above by Marital status, Sector and Sex [Female]

	Total	Never married	Married	Separated	Widowed	Divorced	Not Stated
Count							
Rwanda	3,652,741	1,499,069	1,641,203	28,625	399,117	82,142	2,585
Eastern Province	871,123	331,216	411,871	7,472	94,363	25,703	498
Gatsibo district	115,203	44,495	53,470	967	12,780	3,414	77
Gahini	10,868	4,642	4,737	84	1,197	200	8
Kabare	11,522	4,235	5,707	105	1,094	371	10
Kabarondo	10,417	4,167	4,737	91	1,091	325	6
Mukarange	14,473	6,025	6,031	127	1,768	515	7
Murama	6,705	2,558	3,119	77	674	274	3
Murundi	11,438	4,077	5,735	69	1,240	312	5
Mwiri	7,366	2,741	3,683	45	712	175	10
Ndego	6,115	2,165	3,211	37	534	168	0
Nyamirama	10,350	3,967	4,707	83	1,291	295	7
Rukara	10,736	4,382	4,600	91	1,405	250	8
Ruramira	5,797	2,044	2,623	64	833	223	10
Rwinkwavu	9,416	3,492	4,580	94	941	306	3
%							
	Total	Never married	Married	Separated	Widowed	Divorced	Not Stated
Rwanda	100	41.0	44.9	0.8	10.9	2.2	0.1
Eastern Province	100	38.0	47.3	0.9	10.8	3.0	0.1
Gatsibo district	100	38.6	46.4	0.8	11.1	3.0	0.1
Gahini	100	42.7	43.6	0.8	11.0	1.8	0.1
Kabare	100	36.8	49.5	0.9	9.5	3.2	0.1
Kabarondo	100	40.0	45.5	0.9	10.5	3.1	0.1
Mukarange	100	41.6	41.7	0.9	12.2	3.6	0.0
Murama	100	38.2	46.5	1.1	10.1	4.1	0.0
Murundi	100	35.6	50.1	0.6	10.8	2.7	0.0
Mwiri	100	37.2	50.0	0.6	9.7	2.4	0.1
Ndego	100	35.4	52.5	0.6	8.7	2.7	0.0
Nyamirama	100	38.3	45.5	0.8	12.5	2.9	0.1
Rukara	100	40.8	42.8	0.8	13.1	2.3	0.1
Ruramira	100	35.3	45.2	1.1	14.4	3.8	0.2
Rwinkwavu	100	37.1	48.6	1.0	10.0	3.2	0.0

Source: Rwanda 4th Population and Housing Census, 2012 (NISR)

Table 47: Distribution (%) of resident population of Gatsibo district aged 12 years and above by Marital status, Age groups and Sex [Male, Female]

Sectors	Count	Total	Never married	Currently Married	Separated	Widowed	Divorced	Not Stated
Male								
Rwanda	3,284,937	100	50.4	47.4	0.2	1.2	0.7	0.0
Eastern Province	794,955	100	48.6	49.0	0.3	1.2	1.0	0.0
Gatsibo district	130310	100	49,1	48,5	0,2	1,2	1,0	0,0
12-14	16141	100	99,4	0,5	0,0	0,0	0,0	0,0
15-19	22649	100	98,7	1,2	0,0	0,0	0,0	0,0
20-24	19460	100	78,7	20,9	0,1	0,0	0,3	0,0
25-29	16506	100	36,8	62,1	0,3	0,1	0,8	0,0
30-34	13097	100	15,8	82,1	0,4	0,4	1,4	0,0
35-39	9529	100	8,1	89,0	0,5	0,6	1,8	0,0
40-44	8145	100	5,9	90,5	0,5	0,9	2,0	0,1
45-49	6380	100	4,1	91,6	0,5	1,7	2,0	0,0
50-54	5996	100	3,4	91,0	0,6	2,8	2,2	0,1
55-59	4243	100	3,5	89,6	0,4	4,5	2,0	0,0
60-64	2969	100	3,7	86,9	0,3	5,8	3,3	0,1
65-69	1602	100	2,3	86,1	0,2	9,0	2,2	0,1
70-74	1485	100	2,8	83,8	0,4	10,2	2,6	0,1
75-79	903	100	2,2	81,4	0,4	14,4	1,6	0,0
80-84	684	100	3,1	79,8	0,0	15,1	1,8	0,3
85+	521	100	5,8	70,1	0,0	22,3	1,5	0,4
Female								
Rwanda	3,652,741	100	41.0	44.9	0.8	10.9	2.2	0.1
Eastern Province	871,123	100	38.0	47.3	0.9	10.8	3.0	0.1
Gatsibo district	146322	100	38,4	46,5	0,8	11,4	2,9	0,1
12-14	16506	100	99,2	0,7	0,0	0,0	0,0	0,0
15-19	23129	100	94,6	5,0	0,1	0,1	0,2	0,0
20-24	20328	100	53,5	43,5	1,0	0,3	1,7	0,0
25-29	17545	100	20,6	73,5	1,4	1,2	3,2	0,0

Sectors	Count	Total	Never married	Currently Married	Separated	Widowed	Divorced	Not Stated
30-34	14810	100	10,0	81,0	1,4	2,8	4,7	0,1
35-39	11849	100	6,2	79,1	1,4	7,6	5,7	0,1
40-44	10005	100	4,7	72,7	1,1	15,8	5,6	0,1
45-49	7765	100	3,1	66,2	0,8	24,8	5,0	0,1
50-54	7476	100	2,5	59,1	0,7	32,8	4,8	0,1
55-59	5303	100	1,6	52,4	0,6	40,6	4,6	0,2
60-64	3759	100	1,5	45,5	0,5	48,9	3,3	0,2
65-69	2513	100	1,6	38,6	0,5	56,5	2,7	0,1
70-74	2256	100	1,9	33,2	0,2	61,8	2,6	0,2
75-79	1325	100	1,8	26,9	0,4	69,1	1,7	0,2
80-84	987	100	2,2	21,9	0,0	73,0	2,5	0,3
85+	766	100	3,5	13,8	0,7	79,2	1,6	1,2

Source: Rwanda 4th Population and Housing Census, 2012 (NISR)

Table 48: Distribution (count and %) of the school-age population of Gatsibo district by Sector and by School attendance status and Sex (Male)

Sectors	Count				Percentage			
	Total	Currently attending	No longer attending	Never attended	Total	Currently attending	No longer attending	Never attended
Pre-school-age children (3-6 years)								
Rwanda	637,995	185,075	3,491	449,429	100	29.0	0.6	70.4
Eastern Province	168,677	50,736	976	116,965	100	30.1	0.6	69.3
Gatsibo District	28,255	7,836	145	20,274	100	27.7	0.5	71.8
Gasange	1,122	190	1	931	100	16.9	0.1	83.0
Gatsibo	2,368	492	32	1,844	100	20.8	1.4	77.9
Gitoki	2,263	539	8	1,716	100	23.8	0.4	75.8
Kabarore	3,242	1,090	15	2,137	100	33.6	0.5	65.9
Kageyo	1,524	192	2	1,330	100	12.6	0.1	87.3
Kiramuruzi	2,005	779	17	1,209	100	38.9	0.8	60.3
Kiziguro	1,893	617	8	1,268	100	32.6	0.4	67.0
Muhura	1,909	370	8	1,531	100	19.4	0.4	80.2
Murambi	1,981	691	8	1,282	100	34.9	0.4	64.7
Ngarama	1,999	392	7	1,600	100	19.6	0.4	80.0
Nyagihanga	1,472	573	9	890	100	38.9	0.6	60.5
Remera	1,724	372	12	1,340	100	21.6	0.7	77.7
Rugarama	2,385	953	11	1,421	100	40.0	0.5	59.6
Rwimbogo	2,368	586	7	1,775	100	24.7	0.3	75.0
Primary school-age children (7-12 years)								
Rwanda	847,951	778,099	8,781	61,071	100	91.8	1.0	7.2
Eastern Province	214,304	193,930	2,359	18,015	100	90.5	1.1	8.4
Gatsibo District	37,061	33,570	413	3,078	100	90.6	1.1	8.3
Gasange	1,708	1,472	34	202	100	86.2	2.0	11.8
Gatsibo	3,335	2,937	85	313	100	88.1	2.5	9.4
Gitoki	2,834	2,561	24	249	100	90.4	0.8	8.8
Kabarore	4,257	3,858	41	358	100	90.6	1.0	8.4
Kageyo	1,832	1,546	14	272	100	84.4	0.8	14.8
Kiramuruzi	2,360	2,232	27	101	100	94.6	1.1	4.3
Kiziguro	2,359	2,185	23	151	100	92.6	1.0	6.4
Muhura	2,738	2,421	29	288	100	88.4	1.1	10.5
Murambi	2,322	2,173	25	124	100	93.6	1.1	5.3
Ngarama	2,473	2,210	33	230	100	89.4	1.3	9.3
Nyagihanga	2,014	1,921	19	74	100	95.4	0.9	3.7
Remera	2,389	2,139	22	228	100	89.5	0.9	9.5
Rugarama	3,233	3,069	11	153	100	94.9	0.3	4.7
Rwimbogo	3,207	2,846	26	335	100	88.7	0.8	10.4

Source: Rwanda 4th Population and Housing Census, 2012 (NISR)

Sectors	Count				Percentage			
	Total	Currently attending	No longer attending	Never attended	Total	Currently attending	No longer attending	Never attended
Secondary school-age children (13-18 years)								
Rwanda	671,825	499,738	138,801	33,286	100	74.4	20.7	5.0
Eastern Province	165,394	122,768	33,519	9,107	100	74.2	20.3	5.5
Gatsibo District	28,684	21,548	5,595	1,541	100	75.1	19.5	5.4
Gasange	1,165	779	275	111	100	66.9	23.6	9.5
Gatsibo	2,711	2,073	510	128	100	76.5	18.8	4.7
Gitoki	2,128	1,642	384	102	100	77.2	18.0	4.8
Kabarore	3,338	2,521	587	230	100	75.5	17.6	6.9
Kageyo	1,331	1,001	239	91	100	75.2	18.0	6.8
Kiramuruzi	1,965	1,598	286	81	100	81.3	14.6	4.1
Kiziguro	2,084	1,686	329	69	100	80.9	15.8	3.3
Muhura	1,968	1,289	559	120	100	65.5	28.4	6.1
Murambi	1,726	1,249	381	96	100	72.4	22.1	5.6
Ngarama	1,980	1,411	476	93	100	71.3	24.0	4.7
Nyagihanga	1,691	1,281	355	55	100	75.8	21.0	3.3
Remera	1,598	1,244	268	86	100	77.8	16.8	5.4
Rugarama	2,491	1,961	432	98	100	78.7	17.3	3.9
Rwimbogo	2,508	1,813	514	181	100	72.3	20.5	7.2

Source: Rwanda 4th Population and Housing Census, 2012 (NISR)

Table 49: Distribution (count and %) of the school-age population of Gatsibo district by Sector and by School attendance status and Sex (Female)

Sectors	Count				Percentage			
	Total	Currently attending	No longer attending	Never attended	Total	Currently attending	No longer attending	Never attended
Pre-school-age children (3-6 years)								
Rwanda	642,862	197,189	3,613	442,060	100	30.7	0.6	68.8
Eastern Province	169,918	54,085	1,005	114,828	100	31.83	0.59	67.58
Gatsibo District	29,048	8,415	137	20,496	100	29.0	0.5	70.6
Gasange	1,255	238	3	1,014	100	19.0	0.2	80.8
Gatsibo	2,477	563	29	1,885	100	22.7	1.2	76.1
Gitoki	2,295	578	7	1,710	100	25.2	0.3	74.5
Kabarore	3,336	1,183	13	2,140	100	35.5	0.4	64.1
Kageyo	1,532	225	2	1,305	100	14.7	0.1	85.2
Kiramuruzi	1,943	800	29	1,114	100	41.2	1.5	57.3
Kiziguro	1,935	654	7	1,274	100	33.8	0.4	65.8
Muhura	1,969	425	5	1,539	100	21.6	0.3	78.2
Murambi	2,091	787	5	1,299	100	37.6	0.2	62.1
Ngarama	2,018	407	7	1,604	100	20.2	0.3	79.5
Nyagihanga	1,564	603	8	953	100	38.6	0.5	60.9
Remera	1,779	370	9	1,400	100	20.8	0.5	78.7
Rugarama	2,414	971	4	1,439	100	40.2	0.2	59.6
Rwimbogo	2,440	611	9	1,820	100	25.0	0.4	74.6
Primary school-age children (7-12 years)								
Rwanda	864,508	805,864	7,036	51,608	100	93.2	0.8	6.0
Eastern Province	216,937	199,647	1,997	15,293	100	92.0	0.9	7.0
Gatsibo District	37,750	34,784	357	2,609	100	92.1	0.9	6.9
Gasange	1,733	1,543	24	166	100	89.0	1.4	9.6
Gatsibo	3,265	2,938	69	258	100	90.0	2.1	7.9
Gitoki	3,017	2,763	22	232	100	91.6	0.7	7.7
Kabarore	4,344	4,003	43	298	100	92.2	1.0	6.9
Kageyo	1,838	1,636	10	192	100	89.0	0.5	10.4
Kiramuruzi	2,459	2,346	20	93	100	95.4	0.8	3.8
Kiziguro	2,384	2,264	6	114	100	95.0	0.3	4.8
Muhura	2,791	2,512	25	254	100	90.0	0.9	9.1
Murambi	2,384	2,260	13	111	100	94.8	0.5	4.7
Ngarama	2,697	2,450	44	203	100	90.8	1.6	7.5
Nyagihanga	2,095	1,993	19	83	100	95.1	0.9	4.0
Remera	2,305	2,079	15	211	100	90.2	0.7	9.2
Rugarama	3,048	2,916	17	115	100	95.7	0.6	3.8
Rwimbogo	3,390	3,081	30	279	100	90.9	0.9	8.2

Source: Rwanda 4th Population and Housing Census, 2012 (NISR)

Sectors	Count				Percentage			
	Total	Currently attending	No longer attending	Never attended	Total	Currently attending	No longer attending	Never attended
Secondary school-age children (13-18 years)								
Rwanda	693,946	516,716	148,694	28,536	100	74.5	21.4	4.1
Eastern Province	165,330	122,347	35,622	7,361	100	74.0	21.5	4.5
Gatsibo District	29,254	21,734	6,277	1,243	100	74.3	21.5	4.2
Gasange	1,118	734	298	86	100	65.7	26.7	7.7
Gatsibo	2,801	2,116	569	116	100	75.5	20.3	4.1
Gitoki	2,216	1,602	519	95	100	72.3	23.4	4.3
Kabarore	3,431	2,558	694	179	100	74.6	20.2	5.2
Kageyo	1,327	968	282	77	100	72.9	21.3	5.8
Kiramuruzi	2,094	1,760	281	53	100	84.0	13.4	2.5
Kiziguro	2,080	1,689	321	70	100	81.2	15.4	3.4
Muhura	2,031	1,436	504	91	100	70.7	24.8	4.5
Murambi	1,736	1,247	437	52	100	71.8	25.2	3.0
Ngarama	2,100	1,407	597	96	100	67.0	28.4	4.6
Nyagihanga	1,763	1,339	372	52	100	76.0	21.1	2.9
Remera	1,644	1,220	358	66	100	74.2	21.8	4.0
Rugarama	2,466	1,919	449	98	100	77.8	18.2	4.0
Rwimbogo	2,447	1,739	596	112	100	71.1	24.4	4.6

Source: Rwanda 4th Population and Housing Census, 2012 (NISR)

Table 50: Distribution (%) of resident population of Gatsibo district aged 3 years and above by Highest level of educational attainment and Sector (Male)

Sectors	Highest level of education attained							
	Total	No Schooling	Pre- school	Primary	Post- Primary	Secondary	University	Not stated
Count								
Rwanda	4,616,716	1,050,073	166,311	2,682,674	36,952	524,246	112,064	44,396
Eastern Province	1,140,234	275,954	48,127	669,912	7,329	113,281	14,579	11,052
Gatsibo District	188,984	46,598	7,377	111,630	1,456	18,123	1,916	1,884
Gasange	7,793	2,531	163	4,452	43	442	40	122
Gatsibo	16,009	3,977	392	8,924	185	2,208	197	126
Gitoki	14,299	3,775	458	8,671	79	1,055	92	169
Kabarore	22,517	5,319	1,060	12,426	98	3,014	316	284
Kageyo	9,460	2,924	109	5,589	72	580	51	135
Kiramuruzi	13,394	2,526	816	7,777	121	1,774	240	140
Kiziguro	13,003	2,683	529	7,591	130	1,793	180	97
Muhura	13,024	3,600	253	7,802	100	1,003	137	129
Murambi	12,292	2,692	791	7,749	98	782	73	107
Ngarama	13,023	3,574	434	7,648	79	995	191	102
Nyagihanga	10,645	2,493	514	6,690	114	685	44	105
Remera	11,363	2,976	309	6,911	143	850	80	94
Rugarama	16,261	3,322	931	10,017	79	1,647	157	108
Rwimbogo	15,901	4,206	618	9,383	115	1,295	118	166
Percentage								
Rwanda	100	22.7	3.6	58.1	0.8	11.4	2.4	1
Eastern Province	100	24.2	4.2	58.8	0.6	9.9	1.3	1
Gatsibo District	100	24.7	3.9	59.1	0.8	9.6	1.0	1.0
Gasange	100	32.5	2.1	57.1	0.6	5.7	0.5	1.6
Gatsibo	100	24.8	2.4	55.7	1.2	13.8	1.2	0.8
Gitoki	100	26.4	3.2	60.6	0.6	7.4	0.6	1.2
Kabarore	100	23.6	4.7	55.2	0.4	13.4	1.4	1.3
Kageyo	100	30.9	1.2	59.1	0.8	6.1	0.5	1.4
Kiramuruzi	100	18.9	6.1	58.1	0.9	13.2	1.8	1.0
Kiziguro	100	20.6	4.1	58.4	1.0	13.8	1.4	0.7
Muhura	100	27.6	1.9	59.9	0.8	7.7	1.1	1.0
Murambi	100	21.9	6.4	63.0	0.8	6.4	0.6	0.9
Ngarama	100	27.4	3.3	58.7	0.6	7.6	1.5	0.8
Nyagihanga	100	23.4	4.8	62.8	1.1	6.4	0.4	1.0
Remera	100	26.2	2.7	60.8	1.3	7.5	0.7	0.8
Rugarama	100	20.4	5.7	61.6	0.5	10.1	1.0	0.7
Rwimbogo	100	26.5	3.9	59.0	0.7	8.1	0.7	1.0

Source: Rwanda 4th Population and Housing Census, 2012 (NISR)

Table 51: Distribution (%) of resident population of Gatsibo district aged 3 years and above by Highest level of educational attainment and Sector (Female)

Sectors	Highest level of education attained							
	Total	No Schooling	Pre- school	Primary	Post- Primary	Secondary	University	Not stated
Count								
Rwanda	5,001,594	1,397,566	171,388	2,766,235	35,048	510,488	73,547	47,322
Eastern Province	1,219,926	357,737	49,394	681,670	6,275	105,527	7,669	11,654
Gatsibo District	206,366	62,445	7,667	115,360	1,255	16,739	917	1,983
Gasange	8,501	3,147	173	4,543	35	452	26	125
Gatsibo	17,659	5,562	444	9,371	130	1,972	82	98
Gitoki	15,949	5,053	483	9,166	63	944	36	204
Kabarore	23,101	6,910	1,123	12,395	80	2,167	138	288
Kageyo	10,299	3,717	118	5,683	55	562	14	150
Kiramuruzi	14,980	3,315	879	8,347	133	1,999	146	161
Kiziguro	14,401	3,666	552	7,945	143	1,836	124	135
Muhura	14,287	4,698	280	7,903	102	1,108	63	133
Murambi	14,005	3,657	839	8,499	100	762	30	118
Ngarama	14,513	4,847	478	7,994	80	916	87	111
Nyagihanga	11,715	3,776	514	6,709	61	550	18	87
Remera	12,559	4,200	283	7,073	100	744	35	124
Rugarama	17,508	4,729	857	10,068	83	1,593	67	111
Rwimbogo	16,889	5,168	644	9,664	90	1,134	51	138
Percentage								
Rwanda	100	27.9	3.4	55.3	0.7	10.2	1.5	0.9
Eastern Province	100	29.3	4.0	55.9	0.5	8.7	0.6	1.0
Gatsibo District	100	30.3	3.7	55.9	0.6	8.1	0.4	1.0
Gasange	100	37.0	2.0	53.4	0.4	5.3	0.3	1.5
Gatsibo	100	31.5	2.5	53.1	0.7	11.2	0.5	0.6
Gitoki	100	31.7	3.0	57.5	0.4	5.9	0.2	1.3
Kabarore	100	29.9	4.9	53.7	0.3	9.4	0.6	1.2
Kageyo	100	36.1	1.1	55.2	0.5	5.5	0.1	1.5
Kiramuruzi	100	22.1	5.9	55.7	0.9	13.3	1.0	1.1
Kiziguro	100	25.5	3.8	55.2	1.0	12.7	0.9	0.9
Muhura	100	32.9	2.0	55.3	0.7	7.8	0.4	0.9
Murambi	100	26.1	6.0	60.7	0.7	5.4	0.2	0.8
Ngarama	100	33.4	3.3	55.1	0.6	6.3	0.6	0.8
Nyagihanga	100	32.2	4.4	57.3	0.5	4.7	0.2	0.7
Remera	100	33.4	2.3	56.3	0.8	5.9	0.3	1.0
Rugarama	100	27.0	4.9	57.5	0.5	9.1	0.4	0.6
Rwimbogo	100	30.6	3.8	57.2	0.5	6.7	0.3	0.8

Source: Rwanda 4th Population and Housing Census, 2012 (NISR)

Table 52: Distribution (%) of resident population of Gatsibo district aged 16 years and above residing in private households by Economic activity status and Sector (Both Sex)

Sectors	Active / inactive population							
	Total	Employed	Unemployed	Home worker	Retired	Old age	Student	Other
Count								
Rwanda	5,846,266	4,152,682	147,876	495,462	13,872	158,650	785,655	92,069
Kigali City	711,864	442,500	46,034	97,375	3,288	10,238	104,309	8,120
Eastern province	1,403,562	1,028,717	27,063	108,958	2,673	33,853	180,680	21,618
Gatsibo District	227,552	172,833	2,527	14,014	389	5,640	28,986	3,163
Gasange	9,267	7,515	113	328	19	321	846	125
Gatsibo	14,331	11,108	200	749	27	333	1,655	259
Gitoki	17,542	13,869	135	892	24	407	1,994	221
Kabarore	25,964	19,902	285	974	49	631	3,796	327
Kageyo	11,642	9,487	368	160	15	299	1,200	113
Kiramuruzi	17,645	10,348	203	3,149	24	539	3,136	246
Kiziguro	16,754	11,662	173	1,160	41	523	2,878	317
Muhura	15,718	12,856	131	542	33	382	1,593	181
Murambi	15,783	12,785	132	486	18	359	1,724	279
Ngarama	16,288	13,561	81	400	16	258	1,751	221
Nyagihanga	13,519	9,600	163	1,685	20	315	1,595	141
Remera	13,994	10,800	193	857	22	435	1,442	245
Rugarama	20,209	14,696	182	1,517	47	479	2,995	293
Rwimbogo	18,896	14,644	168	1,115	34	359	2,381	195
%								
Rwanda	100	71.0	2.5	8.5	0.2	2.7	13.4	1.6
Kigali City	100	73.3	1.9	7.8	0.2	2.4	12.9	1.5
Eastern province	100	76.0	1.1	6.2	0.2	2.5	12.7	1.4
Gasange	100	81.1	1.2	3.5	0.2	3.5	9.1	1.3
Gatsibo	100	77.5	1.4	5.2	0.2	2.3	11.5	1.8
Gitoki	100	79.1	0.8	5.1	0.1	2.3	11.4	1.3
Kabarore	100	76.7	1.1	3.8	0.2	2.4	14.6	1.3
Kageyo	100	81.5	3.2	1.4	0.1	2.6	10.3	1.0
Kiramuruzi	100	58.6	1.2	17.8	0.1	3.1	17.8	1.4
Kiziguro	100	69.6	1.0	6.9	0.2	3.1	17.2	1.9
Muhura	100	81.8	0.8	3.4	0.2	2.4	10.1	1.2
Murambi	100	81.0	0.8	3.1	0.1	2.3	10.9	1.8
Ngarama	100	83.3	0.5	2.5	0.1	1.6	10.8	1.4
Nyagihanga	100	71.0	1.2	12.5	0.1	2.3	11.8	1.0
Remera	100	77.2	1.4	6.1	0.2	3.1	10.3	1.8
Rugarama	100	72.7	0.9	7.5	0.2	2.4	14.8	1.4
Rwimbogo	100	77.5	0.9	5.9	0.2	1.9	12.6	1.0

Source: Rwanda 4th Population and Housing Census, 2012 (NISR)

Table 53: Distribution (%) of resident population of Gatsibo district aged 16 years and above residing in private households by Economic activity status and Sector (Male)

sectors	active/inactive population							
	Total	Employed	Unemployed	Home worker	Retired	Old age	Student	Other
Count								
Rwanda	2,716,688	1,998,012	57,097	158,308	6,527	54,754	402,556	39,434
Eastern Province	658,086	493,493	10,522	36,360	1,080	12,101	95,282	9,248
Gatsibo District	105,781	81,158	1,060	4,674	159	2,000	15,326	1,404
Gasange	4,341	3,514	46	143	8	119	448	63
Gatsibo	6,665	5,202	70	290	13	123	847	120
Gitoki	8,076	6,343	63	297	9	139	1,125	100
Kabarore	12,339	9,518	125	326	20	207	2,003	140
Kageyo	5,420	4,372	158	70	4	113	645	58
Kiramuruzi	8,086	5,204	91	972	12	170	1,536	101
Kiziguro	7,707	5,577	66	273	15	179	1,483	114
Muhura	7,324	6,016	67	168	20	142	822	89
Murambi	7,135	5,788	36	149	9	113	938	102
Ngarama	7,531	6,208	32	165	7	83	947	89
Nyagihanga	6,337	4,549	72	662	6	134	851	63
Remera	6,391	4,916	63	319	8	159	815	111
Rugarama	9,367	6,931	80	456	14	173	1,568	145
Rwimbogo	9,062	7,020	91	384	14	146	1,298	109
%								
Rwanda	100	73.5	2.1	5.8	0.2	2.0	14.8	1.5
Eastern Province	100	75.0	1.6	5.5	0.2	1.8	14.5	1.4
Gatsibo District	100	76.7	1.0	4.4	0.2	1.9	14.5	1.3
Gasange	100	80.9	1.1	3.3	0.2	2.7	10.3	1.5
Gatsibo	100	78.0	1.1	4.4	0.2	1.8	12.7	1.8
Gitoki	100	78.5	0.8	3.7	0.1	1.7	13.9	1.2
Kabarore	100	77.1	1.0	2.6	0.2	1.7	16.2	1.1
Kageyo	100	80.7	2.9	1.3	0.1	2.1	11.9	1.1
Kiramuruzi	100	64.4	1.1	12.0	0.1	2.1	19.0	1.2
Kiziguro	100	72.4	0.9	3.5	0.2	2.3	19.2	1.5
Muhura	100	82.1	0.9	2.3	0.3	1.9	11.2	1.2
Murambi	100	81.1	0.5	2.1	0.1	1.6	13.1	1.4
Ngarama	100	82.4	0.4	2.2	0.1	1.1	12.6	1.2
Nyagihanga	100	71.8	1.1	10.4	0.1	2.1	13.4	1.0
Remera	100	76.9	1.0	5.0	0.1	2.5	12.8	1.7
Rugarama	100	74.0	0.9	4.9	0.1	1.8	16.7	1.5
Rwimbogo	100	77.5	1.0	4.2	0.2	1.6	14.3	1.2

Source: Rwanda 4th Population and Housing Census, 2012 (NISR)

Table 54: Distribution (%) of resident population of Gatsibo district aged 16 years and above residing in private households by Economic activity status and Sector (Female)

Sectors	Active / inactive population							
	Total	Employed	Unemployed	Home worker	Retired	Old age	Student	Other
Count								
Rwanda	3,129,578	2,154,670	90,779	337,154	7,345	103,896	383,099	52,635
Eastern Province	745,476	535,224	16,541	72,598	1,593	21,752	85,398	12,370
Gatsibo District	121,771	91,675	1,467	9,340	230	3,640	13,660	1,759
Gasange	4,926	4,001	67	185	11	202	398	62
Gatsibo	7,666	5,906	130	459	14	210	808	139
Gitoki	9,466	7,526	72	595	15	268	869	121
Kabarore	13,625	10,384	160	648	29	424	1,793	187
Kageyo	6,222	5,115	210	90	11	186	555	55
Kiramuruzi	9,559	5,144	112	2,177	12	369	1,600	145
Kiziguro	9,047	6,085	107	887	26	344	1,395	203
Muhura	8,394	6,840	64	374	13	240	771	92
Murambi	8,648	6,997	96	337	9	246	786	177
Ngarama	8,757	7,353	49	235	9	175	804	132
Nyagihanga	7,182	5,051	91	1,023	14	181	744	78
Remera	7,603	5,884	130	538	14	276	627	134
Rugarama	10,842	7,765	102	1,061	33	306	1,427	148
Rwimbogo	9,834	7,624	77	731	20	213	1,083	86
%								
Rwanda	100	68.8	2.9	10.8	0.2	3.3	12.2	1.7
Eastern Province	100	71.8	2.2	9.7	0.2	2.9	11.5	1.7
Gatsibo District	100	75.3	1.2	7.7	0.2	3.0	11.2	1.4
Gasange	100	81.2	1.4	3.8	0.2	4.1	8.1	1.3
Gatsibo	100	77.0	1.7	6.0	0.2	2.7	10.5	1.8
Gitoki	100	79.5	0.8	6.3	0.2	2.8	9.2	1.3
Kabarore	100	76.2	1.2	4.8	0.2	3.1	13.2	1.4
Kageyo	100	82.2	3.4	1.4	0.2	3.0	8.9	0.9
Kiramuruzi	100	53.8	1.2	22.8	0.1	3.9	16.7	1.5
Kiziguro	100	67.3	1.2	9.8	0.3	3.8	15.4	2.2
Muhura	100	81.5	0.8	4.5	0.2	2.9	9.2	1.1
Murambi	100	80.9	1.1	3.9	0.1	2.8	9.1	2.0
Ngarama	100	84.0	0.6	2.7	0.1	2.0	9.2	1.5
Nyagihanga	100	70.3	1.3	14.2	0.2	2.5	10.4	1.1
Remera	100	77.4	1.7	7.1	0.2	3.6	8.2	1.8
Rugarama	100	71.6	0.9	9.8	0.3	2.8	13.2	1.4
Rwimbogo	100	77.5	0.8	7.4	0.2	2.2	11.0	0.9

Source: Rwanda 4th Population and Housing Census, 2012 (NISR)

Table 55: Distribution (count and %) of the private households of the District of Gatsibo by main source of water supply and Sector

Sectors	Total (Count)	Total (%)	Internal pipe-born water	Pipe-born water in the compound	Public tap out of the compound	Protected spring/well	Unprotected spring/well	Rain water	River	Lake/Stream/Pond/Surface water	Other	Not stated
			Improved water			Non improved water						
Rwanda	2,424,898	100	0.5	7.1	27.7	37	13	0.7	6.4	6.4	0.2	1.1
Eastern Province	599,272	100	0.2	3.3	34.2	21.5	14.2	0.3	9.7	15.2	0.3	1.0
Gatsibo district	96,320	100	0.2	1.3	22.3	30.4	19.0	0.3	10.7	13.8	0.7	1.2
Gasange	3,841	100	0.0	0.3	18.5	7.6	6.8	0.0	24.9	38.5	2.5	0.9
Gatsibo	5,924	100	0.2	4.6	28.7	36.9	11.8	0.1	12.2	3.6	0.4	1.5
Gitoki	7,750	100	0.1	0.6	9.6	60.7	9.5	0.2	9.3	6.0	2.9	1.2
Kabarore	11,076	100	0.4	1.6	25.1	28.6	17.9	0.2	1.6	22.7	0.4	1.4
Kageyo	5,053	100	0.4	1.6	29.0	37.7	18.3	0.1	10.6	1.3	0.0	1.0
Kiramuruzi	7,404	100	0.1	2.5	23.3	10.0	14.1	0.1	12.7	35.5	0.2	1.5
Kiziguro	6,765	100	0.1	1.1	20.2	34.2	32.5	0.7	3.8	6.3	0.0	1.0
Muhura	6,761	100	0.2	1.1	55.1	19.5	9.3	0.0	9.0	4.3	0.6	1.0
Murambi	6,683	100	0.1	0.4	13.0	28.0	10.4	0.2	15.6	28.8	1.9	1.4
Ngarama	7,199	100	0.3	3.1	15.2	12.3	48.3	0.1	8.9	9.4	0.8	1.6
Nyagihanga	5,624	100	0.0	0.5	18.3	34.9	15.5	0.2	29.2	0.6	0.1	0.6
Remera	6,091	100	0.1	0.4	33.8	32.8	13.2	0.1	16.1	2.6	0.0	0.9
Rugarama	8,427	100	0.1	0.5	18.1	43.9	18.0	0.1	11.7	6.8	0.0	0.8
Rwimbogo	7,722	100	0.1	0.3	9.1	29.4	32.1	1.4	1.1	24.3	0.9	1.5

Source: Rwanda 4th Population and Housing Census, 2012 (NISR)

Table 56: Distribution of private households in Gatsibo district by type of sanitation facilities and area of residence

Sector	Total (count)	Total (%)	Main type of toilet facility (%)		Not stated
			Improved sanitation facility	Unimproved sanitation facility	
Rwanda	2,424,898	100	95.6	2.6	1.7
Eastern Province	599,272	100	96.1	2.6	1.3
Gatsibo district	96,320	100	96.3	2.4	1.3
Gasange	3,841	100	97.0	2.1	0.9
Gatsibo	5,924	100	95.7	2.8	1.6
Gitoki	7,750	100	95.3	3.1	1.6
Kabarore	11,076	100	96.4	2.1	1.5
Kageyo	5,053	100	96.4	2.2	1.4
Kiramuruzi	7,404	100	96.2	2.5	1.3
Kiziguro	6,765	100	96.0	2.7	1.3
Muhura	6,761	100	96.2	2.2	1.6
Murambi	6,683	100	96.9	1.7	1.5
Ngarama	7,199	100	95.4	3.2	1.4
Nyagihanga	5,624	100	95.9	3.5	0.6
Remera	6,091	100	95.3	3.2	1.5
Rugarama	8,427	100	97.5	1.4	1.1
Rwimbogo	7,722	100	97.1	1.6	1.3

Source: Rwanda 4th Population and Housing Census, 2012 (NISR)

