

STATISTICAL YEARBOOK 2015

CHAPTER XIV: LAW ENFORCEMENT, COURT AND ORDER

Table 14.1.1: Distribution of crimes by types of offense

Item	Violent crime				Property crime		Total
	Murder	Forcible rape	Robbery	Aggravated assault	Burglary	Larceny theft	
2010							
N	2,455	1,661	22	2,001	-	-	6,139
%	40	27	0	33	-	-	100
2011							
N	177	1,486	49	1,832	1,646	404	5,594
%	3	27	1	33	29	7	
2012							
N	436	265	27	3,177	2,365	769	7,039
%	6	4	0	45	34	11	100
2013							
N	359	265	38	3,299	2,734	1016	7,711
%	5	3	0	43	35	13	100
2014							
N	428	1442	50	3,462	2,523	1275	9,180
%	4.7	15.7	0.5	38	28	13.9	100

Source: Rwanda National Police

Table 14.1.2: Distribution of crimes by type, according to province

Type of crime	Northern Province		Southern Province		Eastern Province		Western Province		Kigali City		Total	
	N	%	N	%	N	%	N	%	N	%	N	%
2013												
Murder and non-negligent manslaughter	52	14.5	103	28.7	77	21.4	76	21.2	51	14.2	359	100
Forcible rape	41	15.5	53	20	78	29.4	44	16.6	49	18.5	265	100
Robbery	8	21.1	11	28.9	9	23.7	8	21.1	2	5.3	38	100
Aggravated assault	490	14.9	648	19.6	864	26.2	519	15.7	778	23.6	3,299	100
Property:												
Burglary	312	11.4	475	17.4	718	26.3	408	14.9	821	30	2,734	100
Larceny-theft	108	10.6	113	11.1	95	9.4	193	19	507	49.9	1,016	100
2014												
Murder and non-negligent manslaughter	78	18.2	97	22.7	108	25.2	89	20.8	56	13.1	428	100
Forcible rape	155	10.7	228	15.8	422	29.3	234	16.2	403	27.9	1,442	100
Robbery	8	16.0	7	14.0	13	26.0	13	26.0	9	18.0	50	100
Aggravated assault	519	15.0	559	16.1	807	23.3	659	19.0	918	26.5	3,462	100
Property:												
Burglary	269	10.7	452	17.9	578	22.9	473	18.7	751	29.8	2,523	100
Larceny-theft	143	11.2	110	8.6	226	17.7	115	9.0	681	53.4	1,275	100

Source: Rwanda National Police

Table 14.1.3: Murder, Assault and Suicide cases related to family conflict

Cases	2013					2014				
	Number		Total	Percentage		Number		Total	Percentage	
	Female	Male		Female	Male	Female	Male		Female	Male
Victims of spousal homicide	39	14		73.6	26.4	37	25		60	40
Victims of homicide between concubines	9	10		47.4	52.6	36	26		58	42
Victims of spousal assault	242	22		91.7	8.3	271	22		92	8
Victims of assault between concubines	84	63		57.1	42.9	164	84		66	34
Victims of spousal suicide	3	7		30	70	2	3		40	60
Victims of suicide between concubines	4	11		26.7	73.3	2	3		40	60

Source: Rwanda National Police

Table 14.1.4: Drug cases registered in 2014

	Arrested Cannabis					Arrested for Kanyanga			Number of Cases
	Gender		Age-group			Gender		36 +	
	Female	Male	Under 18	19 - 35	36 +	Female	Male		
Jan	19	197	1	176	36	19	151	39	313
Feb	20	168	1	166	21	24	96	34	235
Mar	27	163	2	154	34	20	76	21	231
Apr	17	199	3	175	38	22	135	45	250
May	16	183	2	152	45	39	137	22	287
Jun	17	148	3	130	32	47	150	56	296
Jul	13	141	8	135	11	37	150	43	280
Aug	9	107	3	104	9	22	109	33	205
Sep	12	152	6	137	21	28	132	40	267
Oct	12	147	5	131	23	37	152	64	277
Nov	29	155	2	149	33	18	125	38	260
Dec	21	179	1	168	31	39	155	44	304
Total	212	1,939	37	1,777	334	352	1,568	479	3,205

Source: Rwanda National Police

Table 14.1.5: Breakdown of 10 most Crime by province in 2014

CRIME	Kigali City	Northern Province	Western Province	Southern Province	Eastern Province	Total
Murder	34	43	46	68	70	261
Assault and burglary	918	519	659	559	807	3,462
Child defilement	403	155	234	228	422	1,442
Theft without violence	681	143	115	110	226	1,275
Housebreaking theft	751	269	473	452	578	2,523
Fraud and deceit	195	27	55	42	44	363
Breach of trust	169	21	51	24	47	312
Bouncing cheques	286	7	21	15	13	342
Forging documents and related offences	209	32	71	46	55	413
Forging drugs and psychotropic substance	624	733	389	445	989	3,180
TOTAL/REGION	4,270	1,949	2,114	1,989	3,251	13,573

Source: Rwanda National Police

Table 14.1.6: Cases in Court Years, 2010 -2015

Year	Type of cases	Case at the end of the year	Judged cases	New cases
2010	Civil	17,248	28,966	26,062
	Criminal cases (Rape cases included)	17,900	20,497	19,050
	Administrative prosecution	780	395	572
	Minor cases	359	839	625
	Social cases	1,178	831	834
	Genocide cases	157	17	85
	Commercial cases	1,583	2,460	2,527
	General Total	39,205	54,005	47,228
2011-2012	Civil	17,983	29,871	40,258
	Criminal cases (Rape cases included)	11,401	17,438	29,632
	Administrative prosecution	724	526	814
	Minor cases	361	634	935
	Social cases	1,125	619	965
	Genocide cases	149	30	83
	Commercial cases	1,582	2,219	1,803
	General Total	33,325	51,337	74,490
2012-2013	Civil	18,855	43,302	38,382
	Criminal cases (Rape cases included)	14,525	23,369	26,287
	Administrative prosecution	680	793	748
	Minor cases	283	643	710
	Social cases	721	1,103	972
	Genocide cases	174	60	44
	Commercial cases	441	84	161
	General Total	35,679	69,354	67,304
2013-2014	Civil	10,986	37,035	31,906
	Criminal cases (Rape cases included)	11,654	28,804	27,526
	Administrative prosecution	420	907	902
	Minor cases	167	818	750
	Social cases	301	1,341	999
	Genocide cases	50	31	24
	Commercial cases	746	3,592	3,566
	General Total	24,324	72,528	65,673
2014-2015	Civil	7,355	24,069	21,103
	Criminal cases (Rape cases included)	11,391	28,195	28,245
	Administrative prosecution	306	624	457
	Minor cases	144	765	713
	Social cases	284	781	736
	Genocide cases	25	63	112
	Commercial cases	1283	3,338	3,537
	General Total	20,788	57,835	54,903

Source: Rwanda Supreme court

Figure 14.1: Cases in Court Year 2014-2015

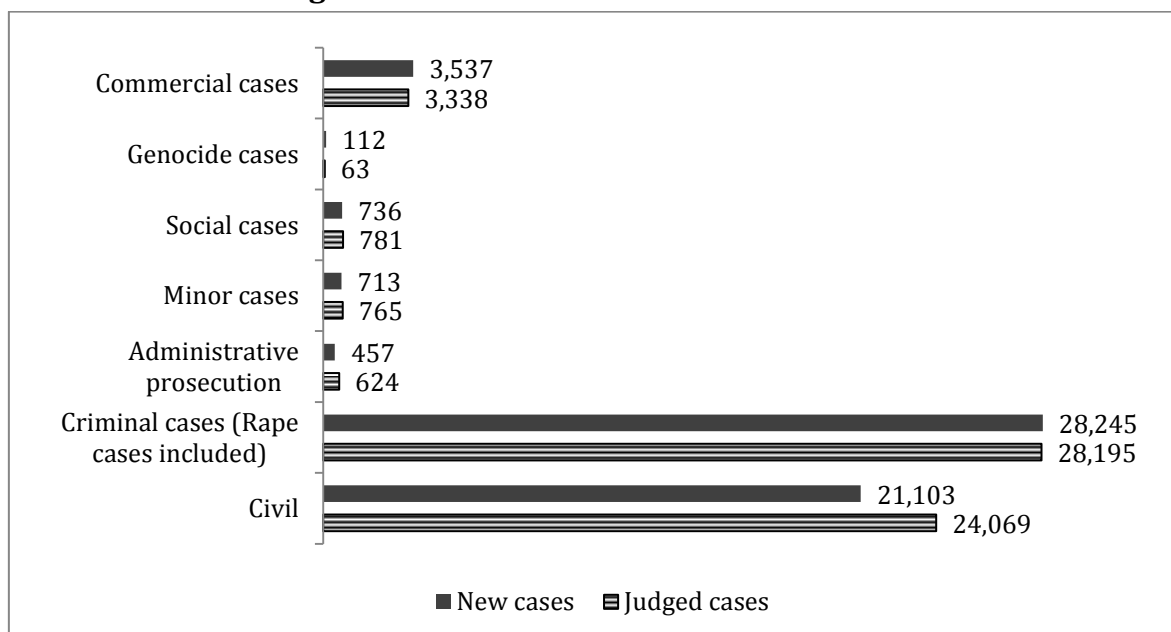


Table 14.1.7: Judged Cases

Type of case	Judged cases					
	2009	2010	2011-2012	2012-2013	2013-2014	2014-2015
Civil	28,573	29,337	41,772	43,302	37,035	24,069
Criminal	22,523	208,430	24,316	23,369	28,804	28,195
Genocide	9	17	59	793	907	63
Social	1055	845	1,094	643	818	781
Administrative prosecution	268	585	660	1,103	1,341	624
Minor	1027	839	1,009	60	31	765
Commercial	42	75	2,624	2,640	3,592	3,338
Total	53,497	52,538	71,534	71,910	72,528	57,835

Source: Rwanda Supreme court

Figure 14.2: Total Judged cases

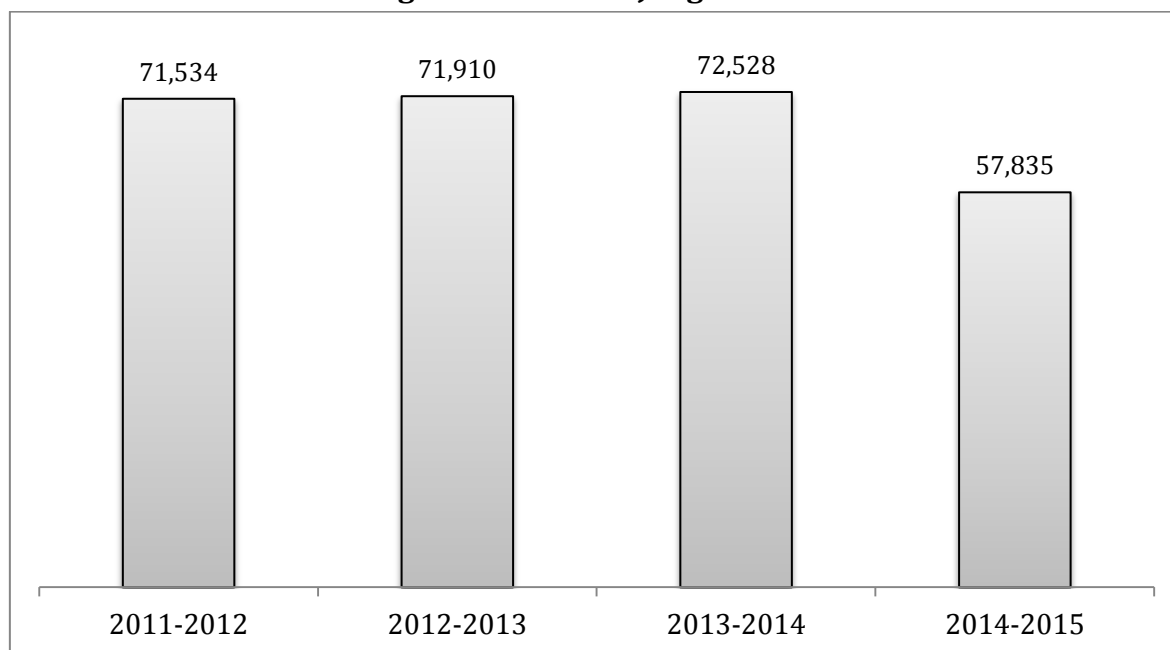


Table 14.1.8: Commercial Courts

Year	Case at the end of the year	Judged cases	New cases
2008	1,787	2,515	908
2009	1,377	1,779	1,840
2010	1,414	2,386	2,365
2011-2012	666	2,545	2,205
2012-2013	312	2,556	2,287
2013-2014	746	3,592	3,566
2014-2015	1283	3,338	3,537

Source: Rwanda Supreme Court

Table 14.1.9: Number of driving licenses delivered by categories and by sex

Year	Type of Driving license	Male	Female	Total
2011	A	24,084	808	24,892
	B	28,800	4,987	33,787
	C	3,823	137	3,960
	D	6,164	260	6,420
	E	353	15	368
	F	723	18	741
	Total	63,947	6,225	70,168
2012	A	25,950	898	26,848
	B	23,092	4,395	27,487
	C	2,498	94	2,592
	D	4,742	210	4,952
	E	261	6	267
	F	806	32	838
	Total	57,349	5,635	62,984
2013	A	1085	370	1,455
	B	11,558	2,446	14,004
	C	1751	55	1,806
	D	2414	95	2,509
	E	182	5	187
	F	752	33	785
	Total	17,742	3,004	20,746
2014	A	3,599	21	3,620
	B	7,133	1,174	8,307
	C	1,115	3	1,118
	D	980	8	988
	D1	17	1	18
	E	131	2	133
	F	582	4	586
	Total	13,557	1,213	14,770

Source: Rwanda National Police

Figure 14.3: Total Number of driving licenses delivered by categories

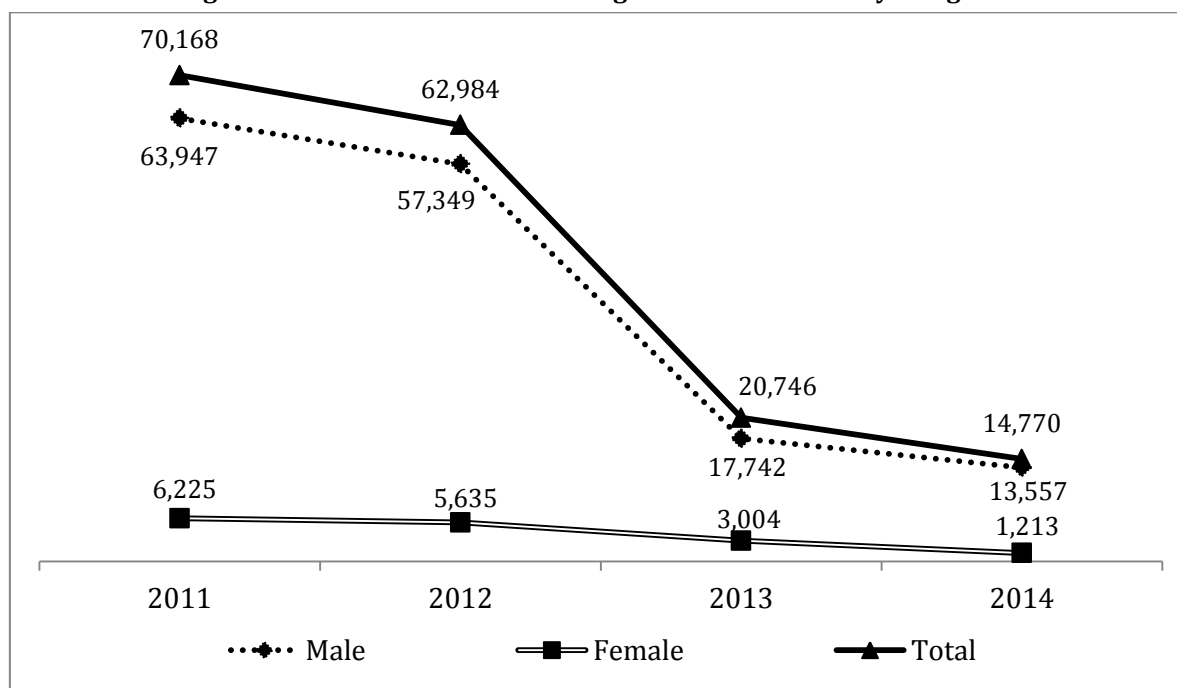


Table 14.1.10: Roads accidents: Number of victims and died persons by kind of vehicles

	Type of vehicles	2009	2010	2011	2012	2013	2014
Injured persons	Motorcycles	700	884	902	585	1,325	1,294
	Public transport Vehicles (Minibus and Bus)	292	642	457	499	540	635
	Voitures and Pick ups	308	636	393	288	640	496
	Truck & Lorries	602	108	126	79	104	61
	Tractors	0	0	0	0	0	22
	Total		1,902	2,270	1,878	1,451	2,609
Killed persons	Motorcycles	35	48	58	51	91	85
	Public transport Vehicles (Minibus and bus)	44	67	71	60	90	117
	Voitures and Pick ups	50	124	71	68	98	120
	Trucks and Lorries	26	31	37	41	36	35
	Tractors	0	0	0	0	0	9
	Total		155	270	237	220	315

Source: Rwanda National Police

Figure 14.4: Roads accidents: Number of victims and died persons

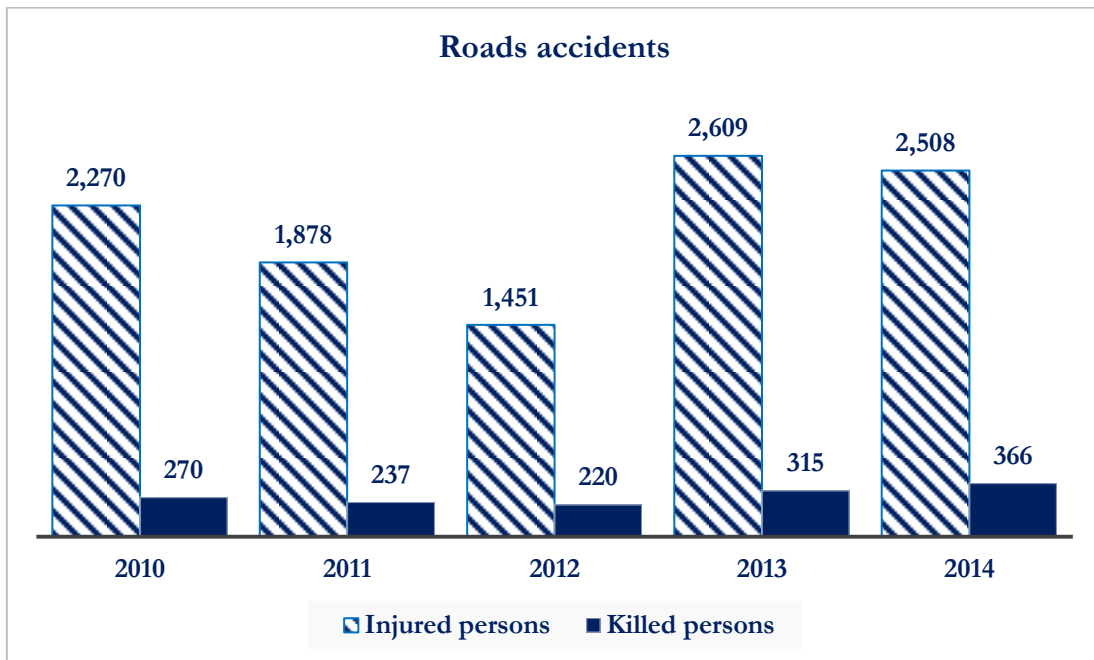


Table 14.1.11: Fire Accidental

	2008	2009	2010	2011	2012	2013	2014
Number of people died in houses destroyed by fire.	2	4	4	2	0	8	3
Number of victims of fire accidents.				7	8	8	7
Number of houses destroyed by fire				84	83	88	88

Source: Rwanda National Police