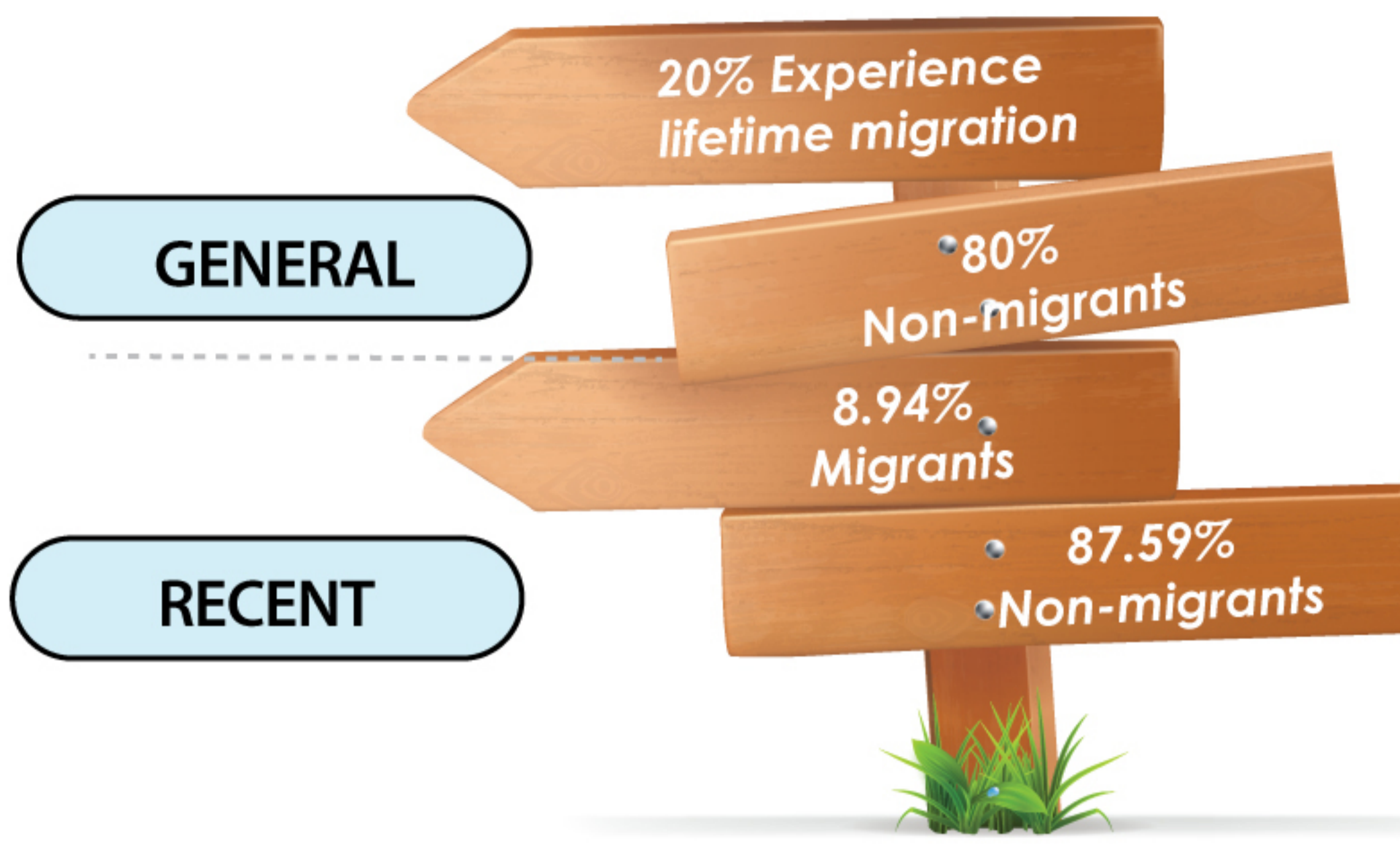


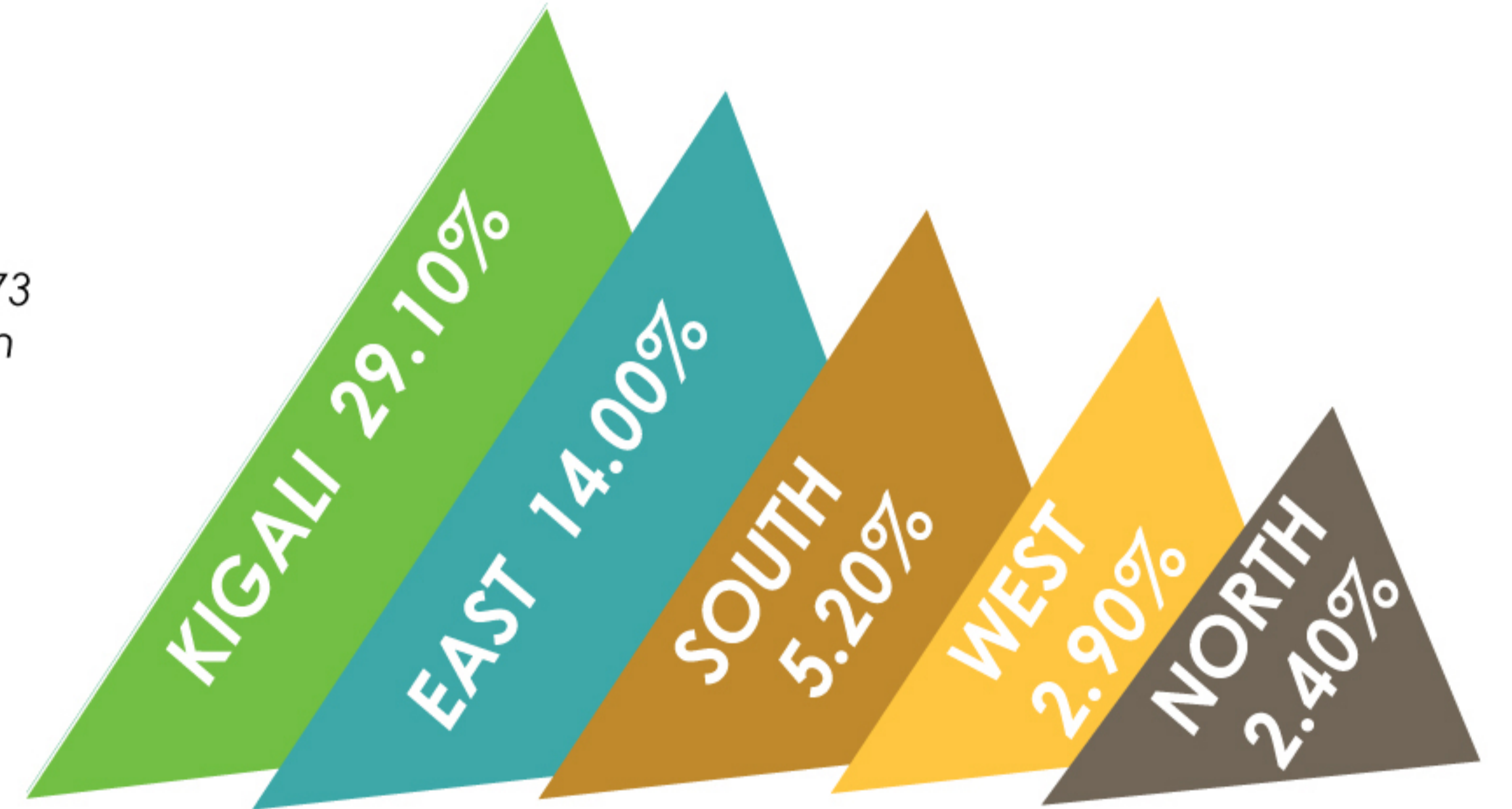
IMPACT OF INTERNAL MIGRATION ON LABOR FORCE PARTICIPATION IN RWANDA

MIGRATION STATUS IN RWANDA



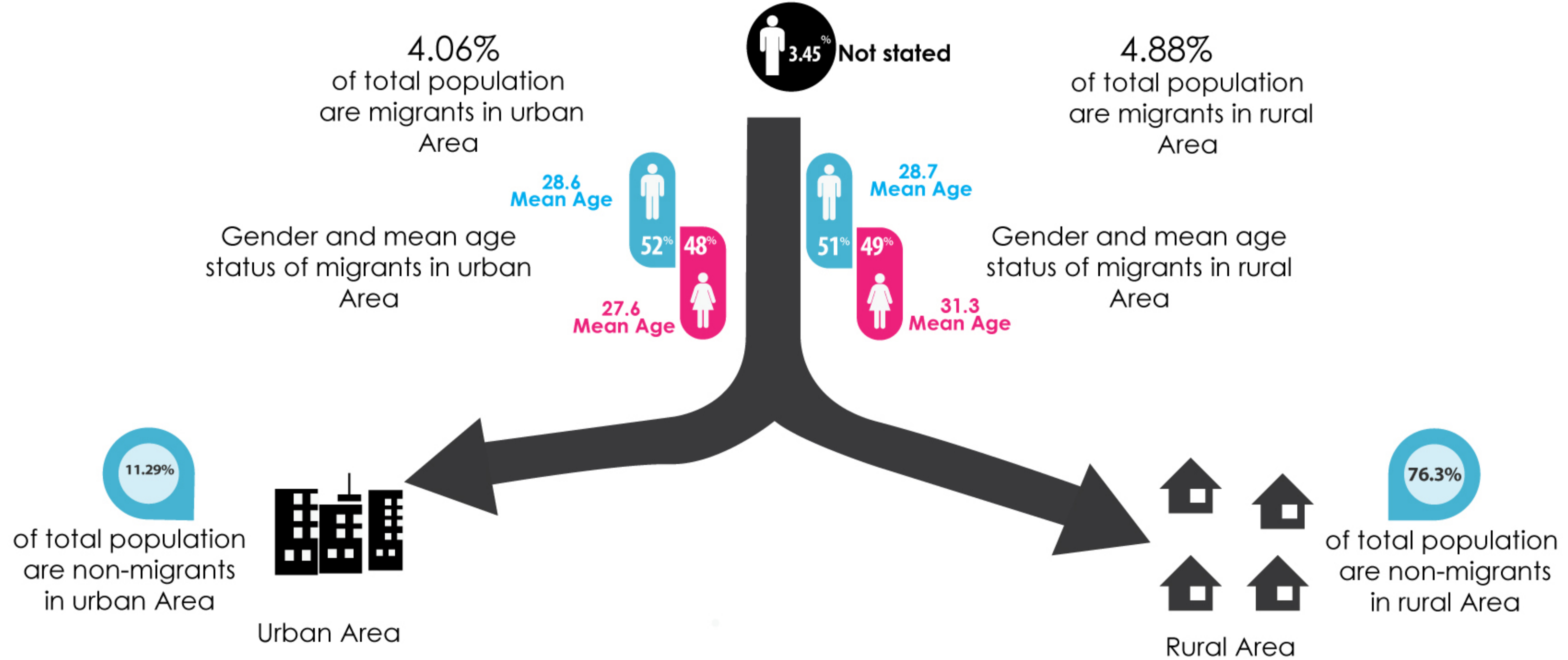
Rwandan population was 10,515,973 according to the fourth population and housing census- 2012

RECENT MIGRATION DISTRIBUTION IN PROVINCES

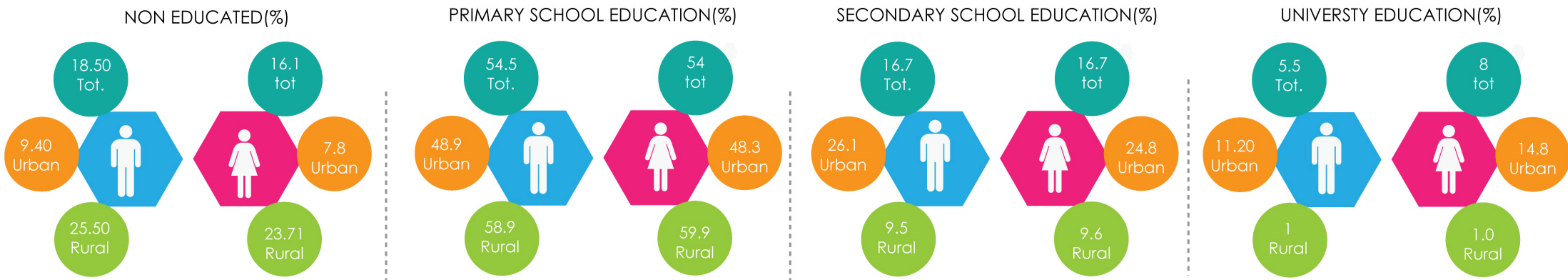


Percentage calculated among total population in each province.

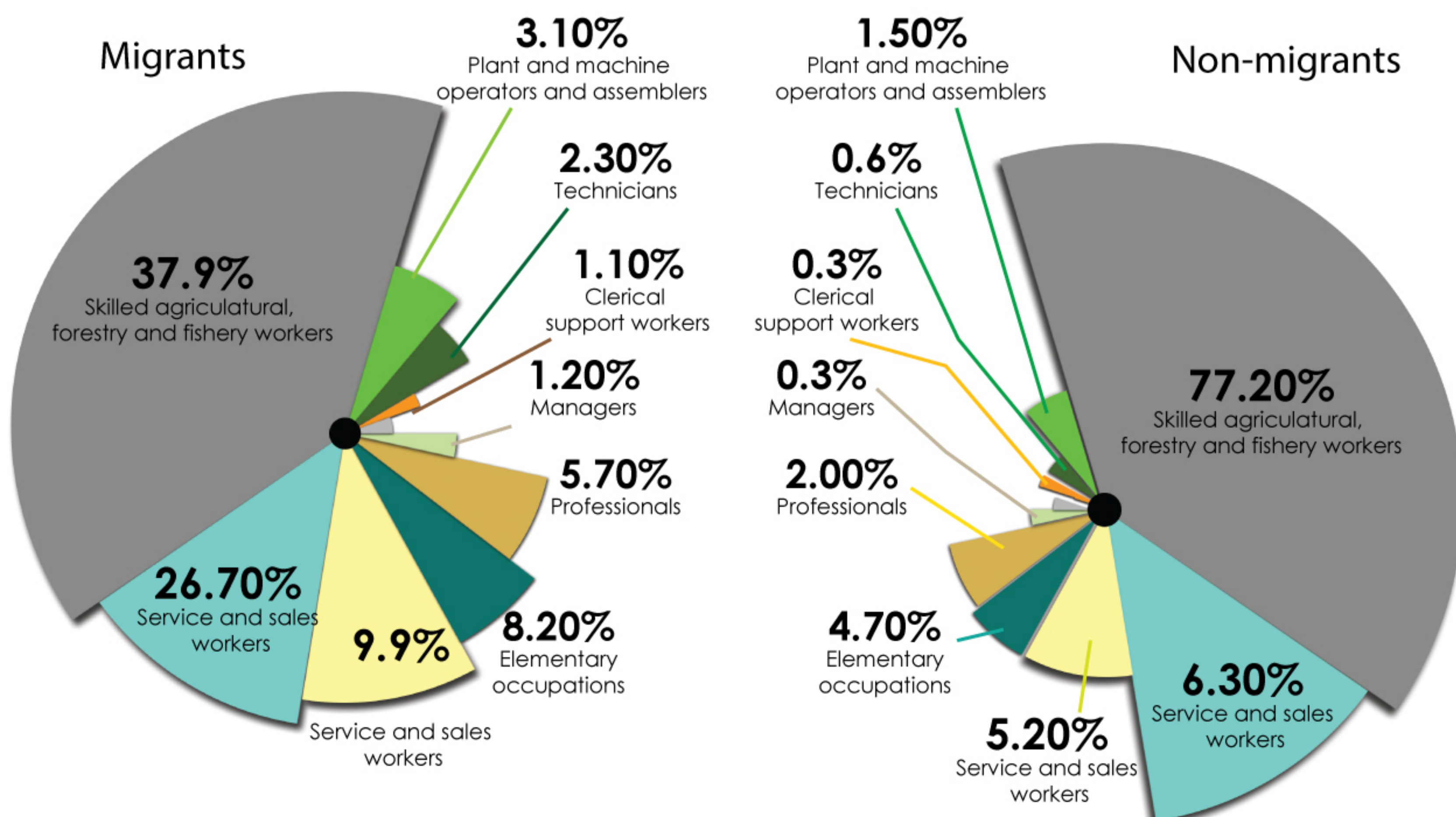
RECENT MIGRATION ANALYSIS



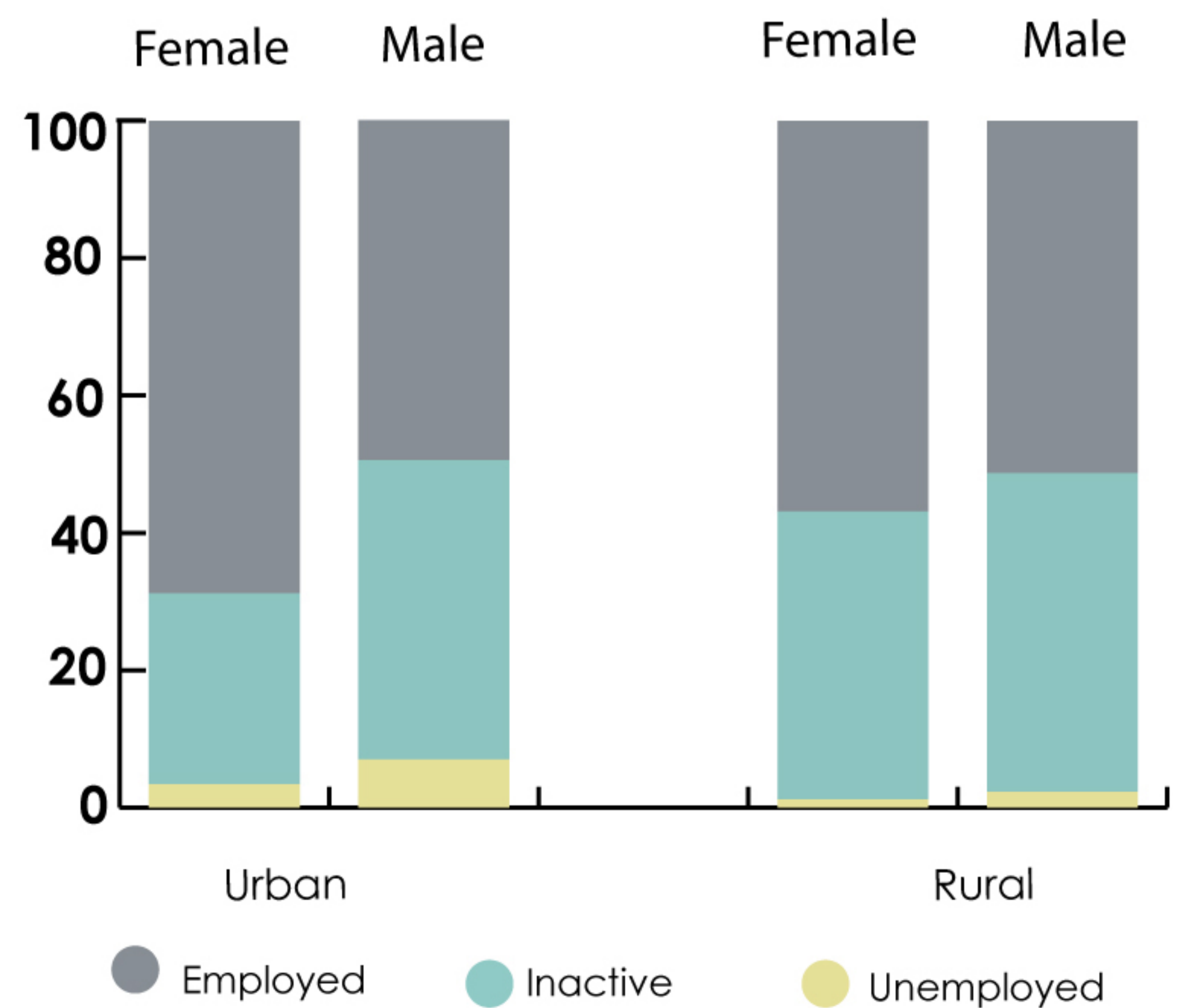
RECENT MIGRANTS EDUCATION LEVEL



LABOR PARTICIPATION OF MIGRANTS COMPARED TO NON-MIGRANTS



ECONOMIC ACTIVITY STATUS OF RECENT MIGRANTS



The percentage of employed migrants is higher than that of non-migrants in all sectors except the agricultural, forestry and fishery workers sector.