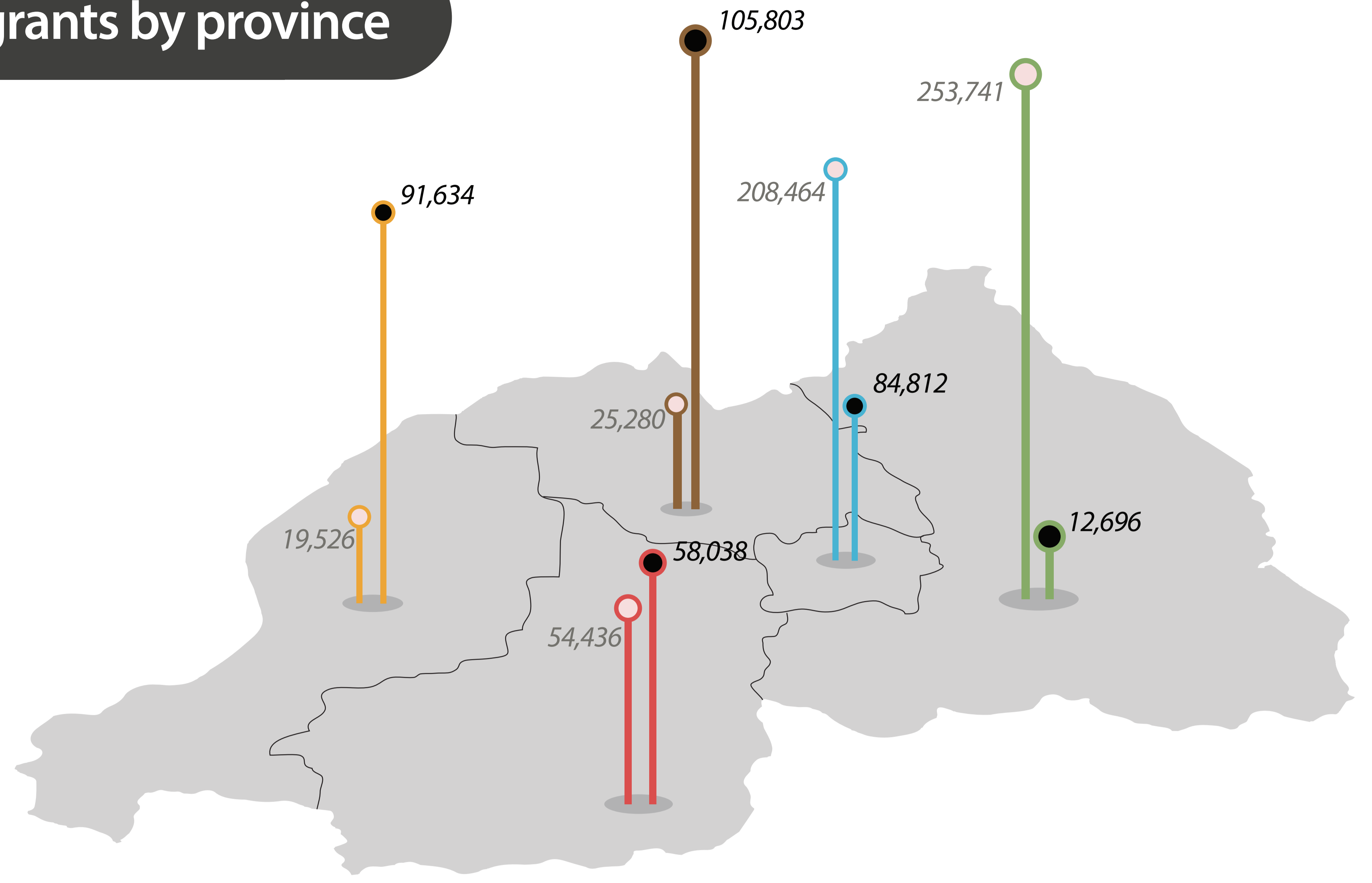


# Impact of internal migration on labour force participation at sub-national levels.

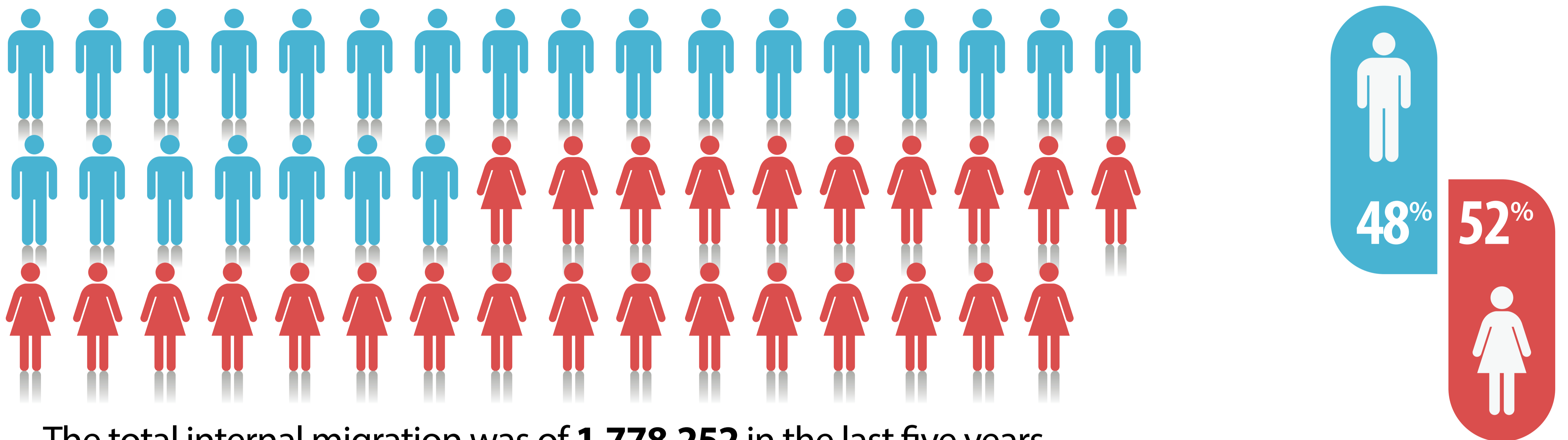


## Total in and out-migrants by province

	In-migrants	Out-migrants
East	253,741	12,696
Kigali city	208,464	84,812
South	54,436	58,038
North	25,280	105,803
West	19,526	91,634

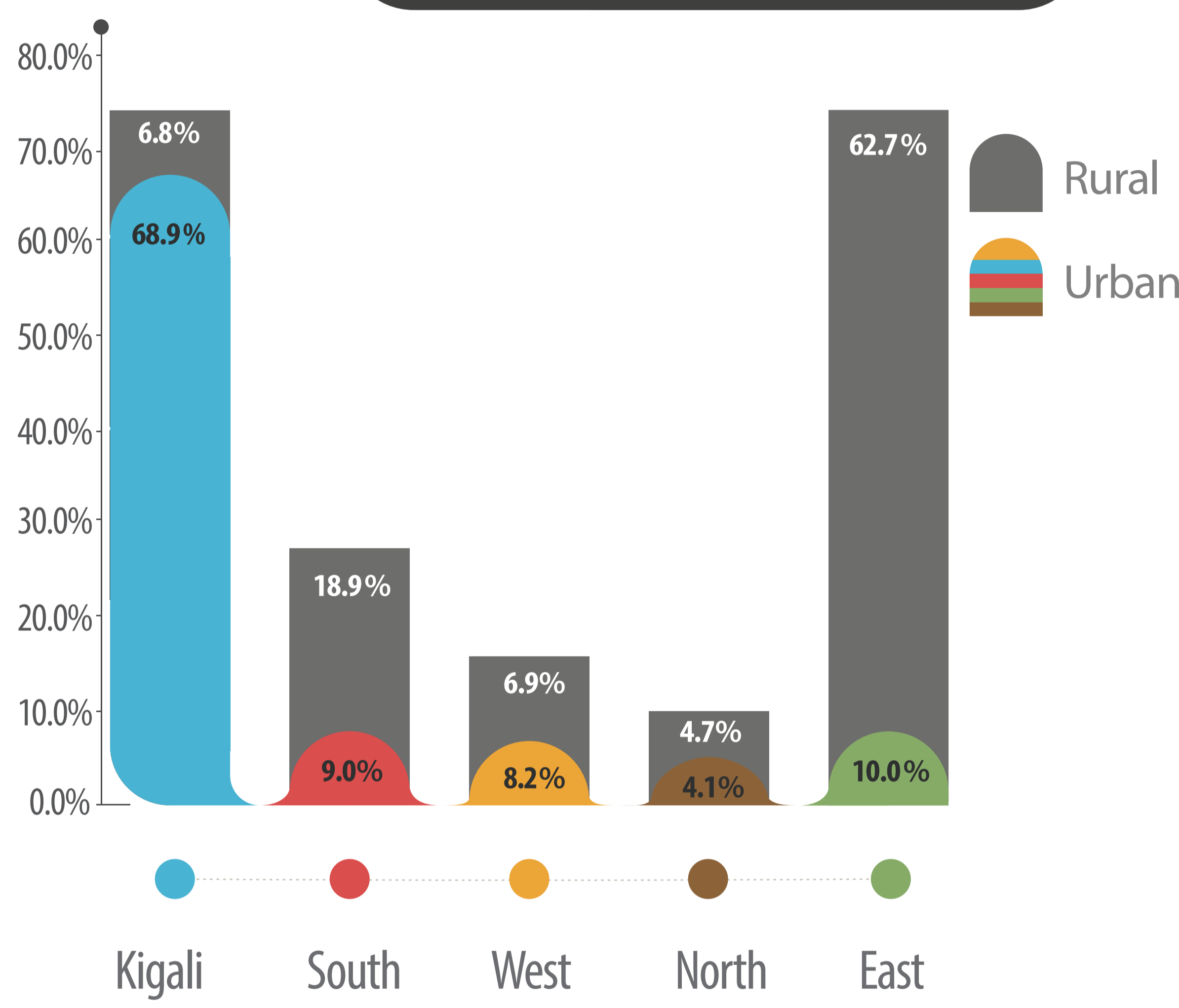


## Proportion of male and female internal migrants

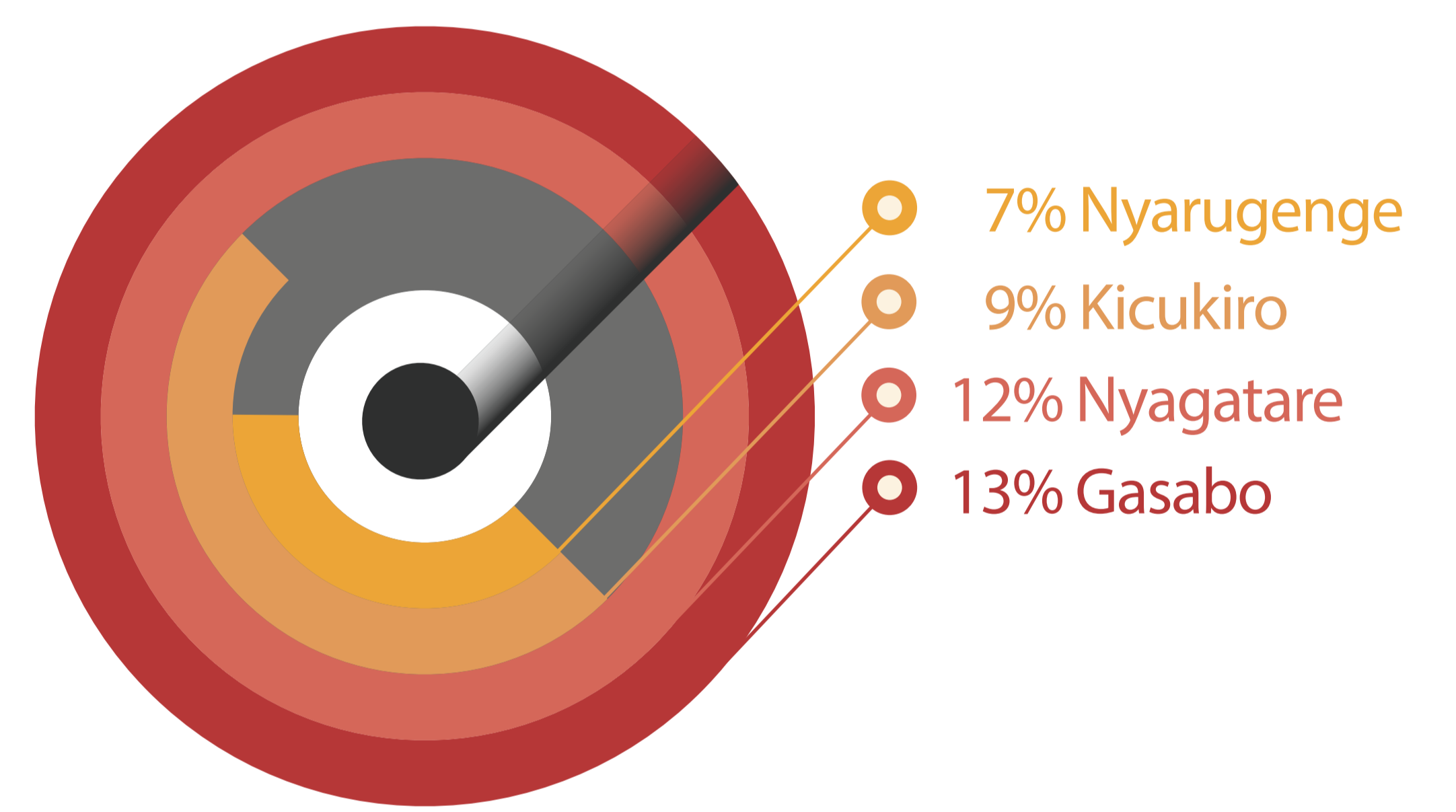


The total internal migration was of **1,778,252** in the last five years

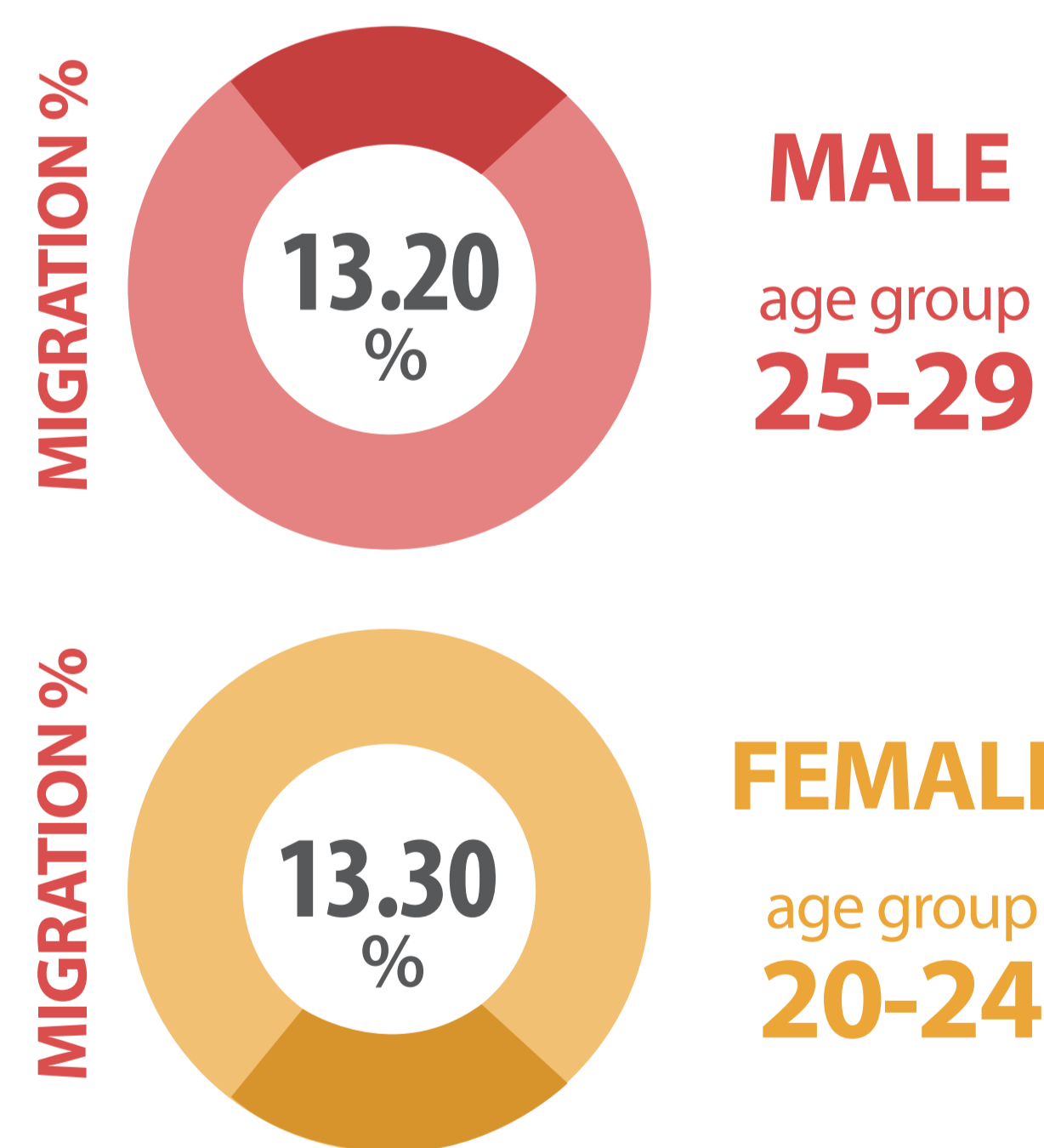
## Recent migrants by area of residence and province



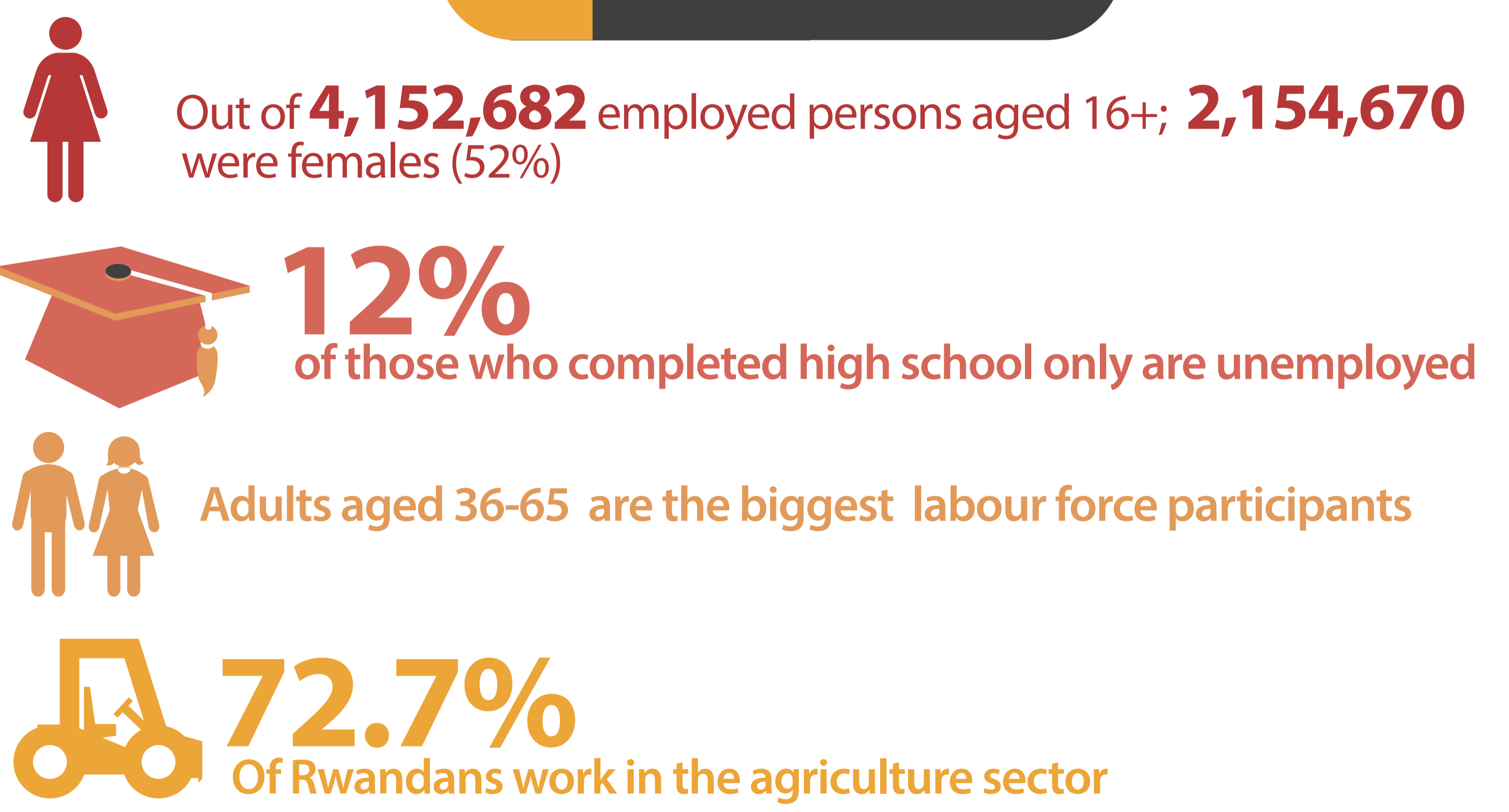
## Preferred districts of destination



## Most migrating age groups by sex



## Labour main facts



## Impact of internal migration on labour force by province

