

REPUBLIC OF RWANDA



NATIONAL INSTITUTE OF STATISTICS OF RWANDA

CONSUMER PRICE INDEX (C.P.I.)
Kigali – December 2007
CAUTION

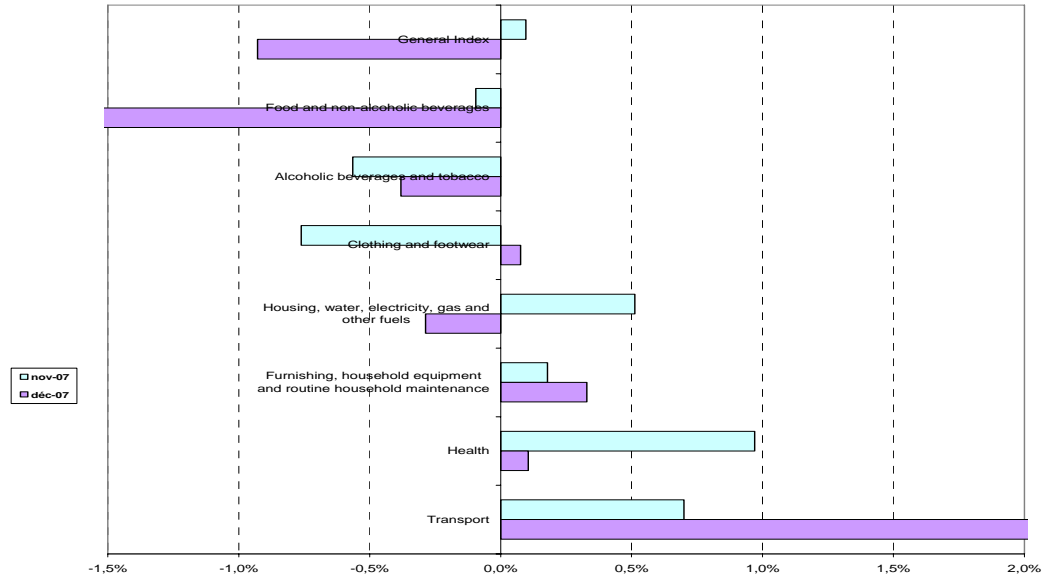
The National Institute of Statistics of Rwanda is very pleased to deliver to users the new Consumer Price Index (CPI) based in 2003 that replaces the previous one which was based in 1989. **The Index is published every month by the 15th.**

Base 100: 2003

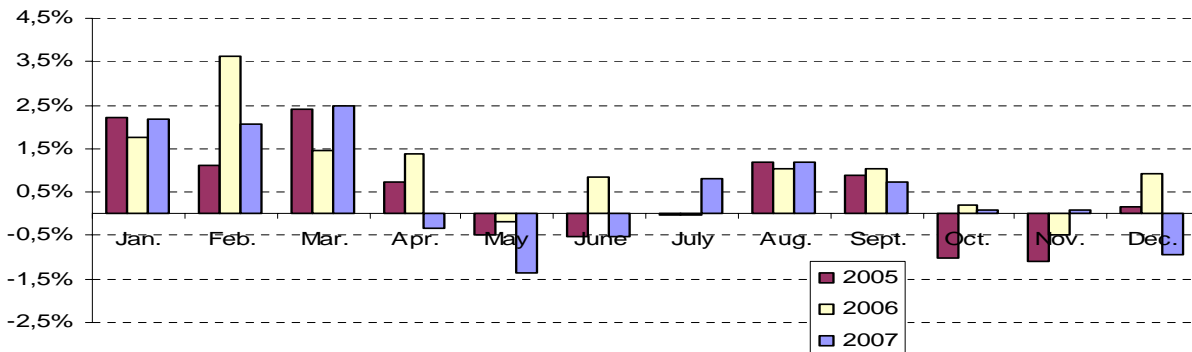
	Divisions ❖ Groups	Weights	Indices for the following months:					Changes in % over		
			dec 06	Sep 07	Oct 07	Nov 07	dec 07	1 month	3 months	12 months
	GENERAL INDEX	10 000	137,0	147,1	147,2	147,4	146,0	-0,93	-0,75	6,58
01	Food and non-alcoholic beverages	3 709	151,4	157,9	157,9	157,7	152,8	-3,12	-3,20	0,95
0111	❖ Bread and cereals	625	153,7	149,7	150,0	154,4	155,3	0,63	3,75	1,07
0112	❖ Meat	345	120,6	120,9	121,9	123,4	125,1	1,31	3,47	3,67
0113	❖ Fish	114	142,3	150,3	159,4	157,0	151,8	-3,29	0,99	6,71
0117	❖ Vegetables	1 332	167,8	182,3	181,5	179,4	162,7	-9,28	-10,71	-3,01
012	❖ Non-alcoholic beverages	180	124,9	132,8	132,5	132,7	133,2	0,32	0,31	6,59
02	Alcoholic beverages and tobacco	221	117,6	127,7	129,2	128,5	128,0	-0,38	0,21	8,88
03	Clothing and footwear	500	105,6	108,5	109,2	108,4	108,5	0,08	-0,05	2,74
04	Housing, water, electricity, gas and other fuels	1 579	161,5	192,6	192,0	193,0	192,4	-0,29	-0,06	19,18
05	Furnishing, household equipment and routine household maintenance	764	117,2	119,7	120,5	120,8	121,1	0,33	1,17	3,39
06	Health	708	109,8	122,5	122,7	123,9	124,0	0,11	1,22	12,97
07	Transport	987	122,0	123,6	124,4	125,3	130,7	4,37	5,74	7,18
08	Communication	37	135,9	135,3	135,3	136,2	140,2	2,93	3,61	3,15
09	Recreation and culture	206	113,4	107,4	108,0	108,4	108,6	0,19	1,11	-4,27
10	Education	432	139,5	156,1	156,1	156,1	153,4	-1,74	-1,74	9,95
11	Restaurants and hotels	273	125,6	144,6	142,8	139,0	139,1	0,04	-3,77	10,78
12	Miscellaneous goods and services	584	109,7	110,9	111,2	111,3	112,4	1,00	1,40	2,45

Month	Dec 06	Jan 07	Feb 07	Mar 07	Apr 07	May 07	Jun 07	Jul 07	Aug 07	Sep 07	Oct 07	Nov 07	Dec 07
Index (2003=100)	137.0	140.0	142.9	146.4	145.9	143.9	143.2	144.4	146.0	147.1	147.2	147,4	146,0
Annual changes	12,2	12,6	10,9	12,0	10,1	8,8	7,3	8,2	8,4	8,0	7,9	8,6	6,6

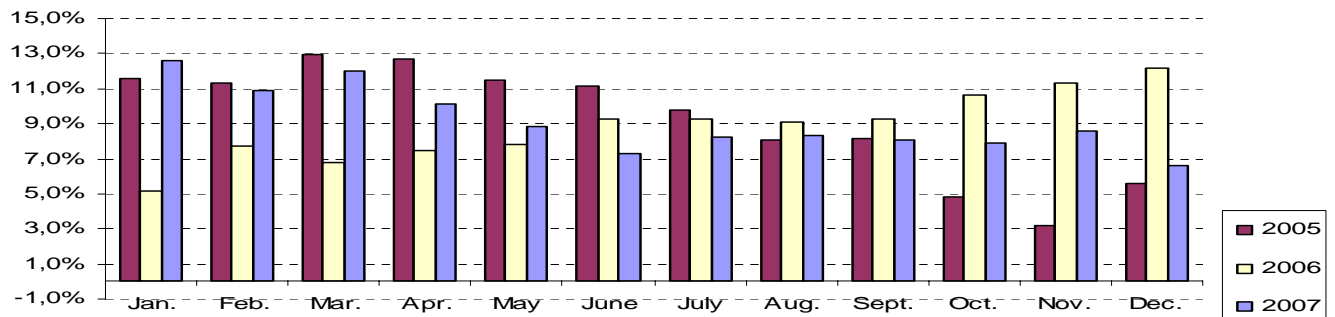
Fluctuations of the general index and the divisions' index in November 2007 and Décembre 2007



Monthly Changes



Annual Changes



CONSUMER PRICE INDEX (IPC), DECEMBER 2007 (Base 100 = 2003)

In December 2007, the consumer price index decreased slightly with a monthly variation of 0.93. The annual change is +6.58% (December 2007 compared with December 2006), a fall compared to the rate of 7, 92% of the previous month. This gives a general inflation rate by an annual average of 9.1%.

The underlying inflation rate (excluding fresh food and energy) is +0.93% from the previous month and +10, 59% in annual change. The underlying inflation rate on annual average was 9.7% in December 2008, slightly in rise compared to that of the previous month (+9, 3%).

The decrease in the CPI was mainly due to the decrease in the price index for 'food and non-alcoholic beverages' (-3.12%). The decline in the index for food and non-alcoholic beverages depends on the fall of 9.28% in the prices of vegetables.

The 'local goods are responsible for inflation than 'imported goods. In terms of annual change, the prices of the local goods have increased by 7.57% with a monthly variation of -1.84%, whereas prices of the imported goods have risen by 4.04% with a monthly variation of 1.69%.

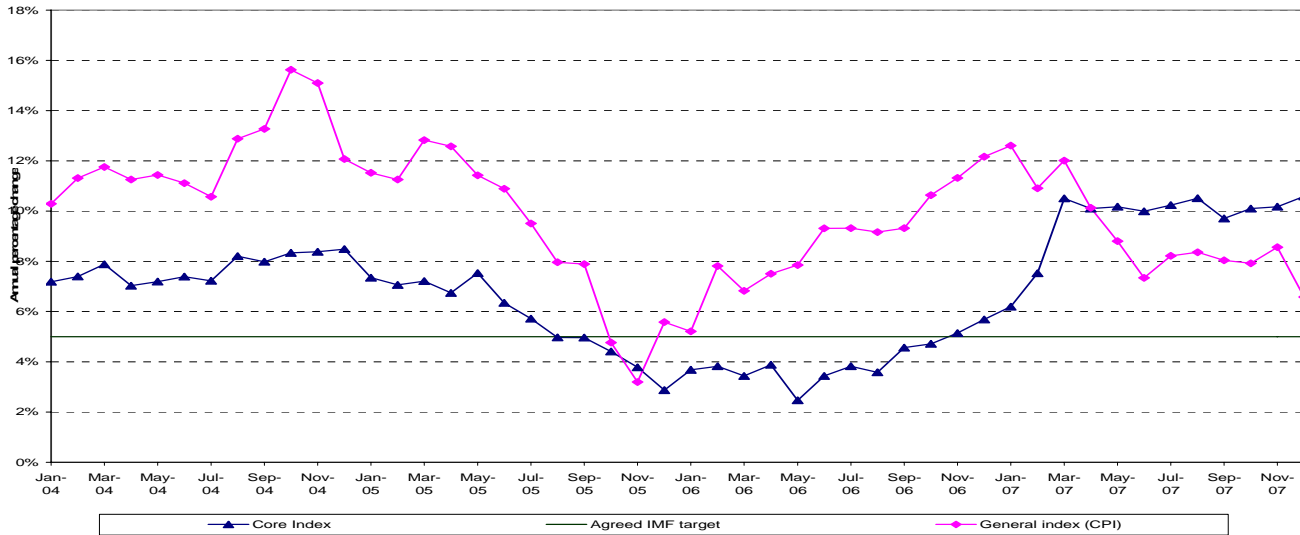
The prices of the fresh products knew a negative annual variation of 3,14% between December 2007 and December 2006, also showing a negative monthly variation of 7,01%.

Evolution (over 12 months) of the rate of inflation (%)⁽¹⁾

MONTH	Dec. 06	Jan. 07	Feb. 07	Mar. 07	Apr. 07	May 07	Jun. 07	Jul. 07	Aug. 07	Sep. 07	Oct. 07	Nov. 07	Dec. 07
General index	8,9	9,5	9,8	10,2	10,4	10,5	10,3	10,2	10,1	10,0	9,8	9,5	9,1
Core / Underlying	4,0	4,2	4,5	5,1	5,7	6,3	6,9	7,4	8,0	8,4	8,8	9,3	9,7

(1) In December 2007 the average index of the last twelve months (January 2007 to December 2007) increased by 9.1% compared to the average index of the previous twelve months (January 2006 to December 2006).

Annual changes (Comparison with the same month of the previous year)



Underlying, Imported and Other Indices

	Weights	Indices for the following months:				Changes in % over:			
		dec-06	Sep-07	Oct-07	Nov-07	Dec-07	1 month	3 months	12 months
General Index	10 000	137,0	147,1	147,2	147,4	146,0	-0,93	-0,75	6,58
Local Goods Index	6 956	142,2	155,9	156,1	155,9	153,0	-1,84	-1,88	7,57
Food and non-alcoholic beverages	2 627	157,0	163,4	163,9	163,6	154,9	-5,31	-5,18	-1,34
Housing, water, electricity, gas and other fuels	1 501	159,7	192,4	191,9	192,1	191,3	-0,39	-0,57	19,82
Transport	698	114,6	114,2	114,2	114,5	120,5	5,30	5,57	5,21
Imported Goods Index	3 044	124,1	126,1	126,1	127,0	129,1	1,69	2,38	4,04
Food and non-alcoholic beverages	1 082	137,0	144,2	142,8	142,5	146,7	2,99	1,75	7,11
Furnishing, household equipment	533	115,6	118,0	118,8	119,1	118,1	-0,83	0,06	2,18
Transport	289	139,8	146,2	148,7	151,0	155,1	2,71	6,09	10,96
Kigali Index	7 679	134,7	145,4	145,5	145,7	144,3	-0,98	-0,76	7,13
Provinces Index⁽¹⁾	2 321	144,6	152,9	153,1	152,8	151,7	-0,75	-0,79	4,87
Fresh Products⁽²⁾ index	1 829	167,0	176,4	175,6	173,9	161,7	-7,01	-8,33	-3,14
Energy index	761	225,1	229,3	229,9	232,4	231,9	-0,24	1,13	2,99
General Index excluding fresh Products and energy⁽³⁾	7 410	120,5	131,4	131,7	132,1	133,3	0,93	1,43	10,59

(1) This is the national index without Kigali

(2) Fresh products are food products which have seasonal fluctuations

(3) Proxy for underlying inflation

METHODOLOGICAL NOTICE

The Consumer Price Index is a Laspeyres index that covers household consumption as it is used by national accounts. The reference population for the CPI consists of all households living in urban areas in Rwanda.

The household basket includes 438 products observed in many places spread all over the administrative centers of all provinces in Rwanda. All kinds of places of observation are selected: shops, markets, services, etc. More than 25,000 prices are collected every month by enumerators of the National Institute of Statistics of Rwanda and of the National Bank of Rwanda.

The base year for the CPI is the year 2003.

The weights used for this new index are the result of the Household Living Conditions Survey (EICV) conducted in 2000-2001 with a sample of 6,450 households.

The splicing with the old index is feasible using the splicing coefficient of 3.889. If you divide the old index by this coefficient, you will be able to make comparisons with the new index based in 2003.

Additional methodological documentation can be obtained at the National Institute of Statistics of Rwanda, Economic Statistics Department.

Contacts

National Institute of Statistics of Rwanda (NISR), P.O. BOX 6139 Kigali, Tel.: (250) 750545 Fax: (250) 575719, Web site: www.statistics.gov.rw /CPI Indexes

Publication Director: Dr. Ir. Louis Munyakazi, Director General of the NISR

Director, Economic Statistics Department: MURANGWA Yusuf, magoyusuf@hotmail.com

Head of the Price Section at the NBR: Callixte Karamage, ckaramage@yahoo.fr

Subscribers can receive this publication by e-mail.