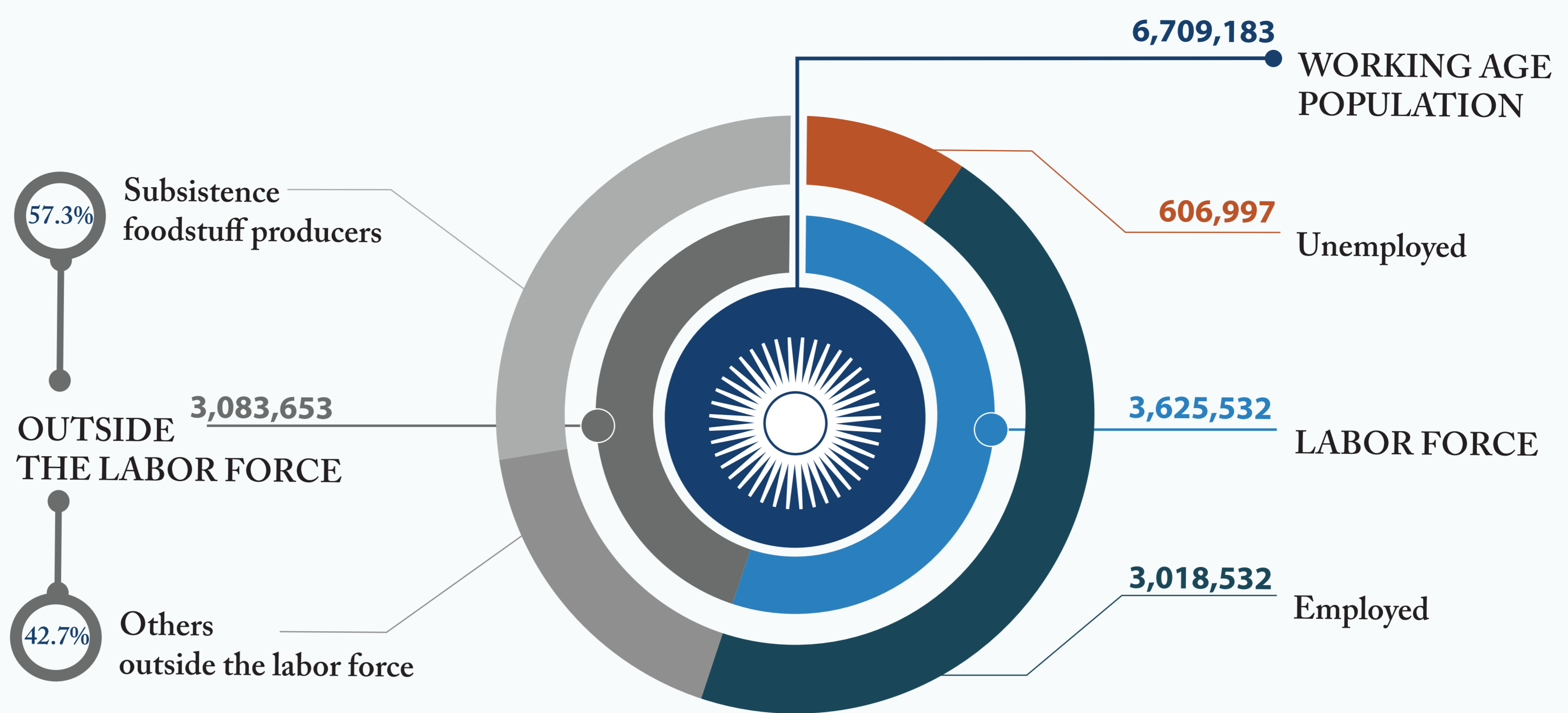


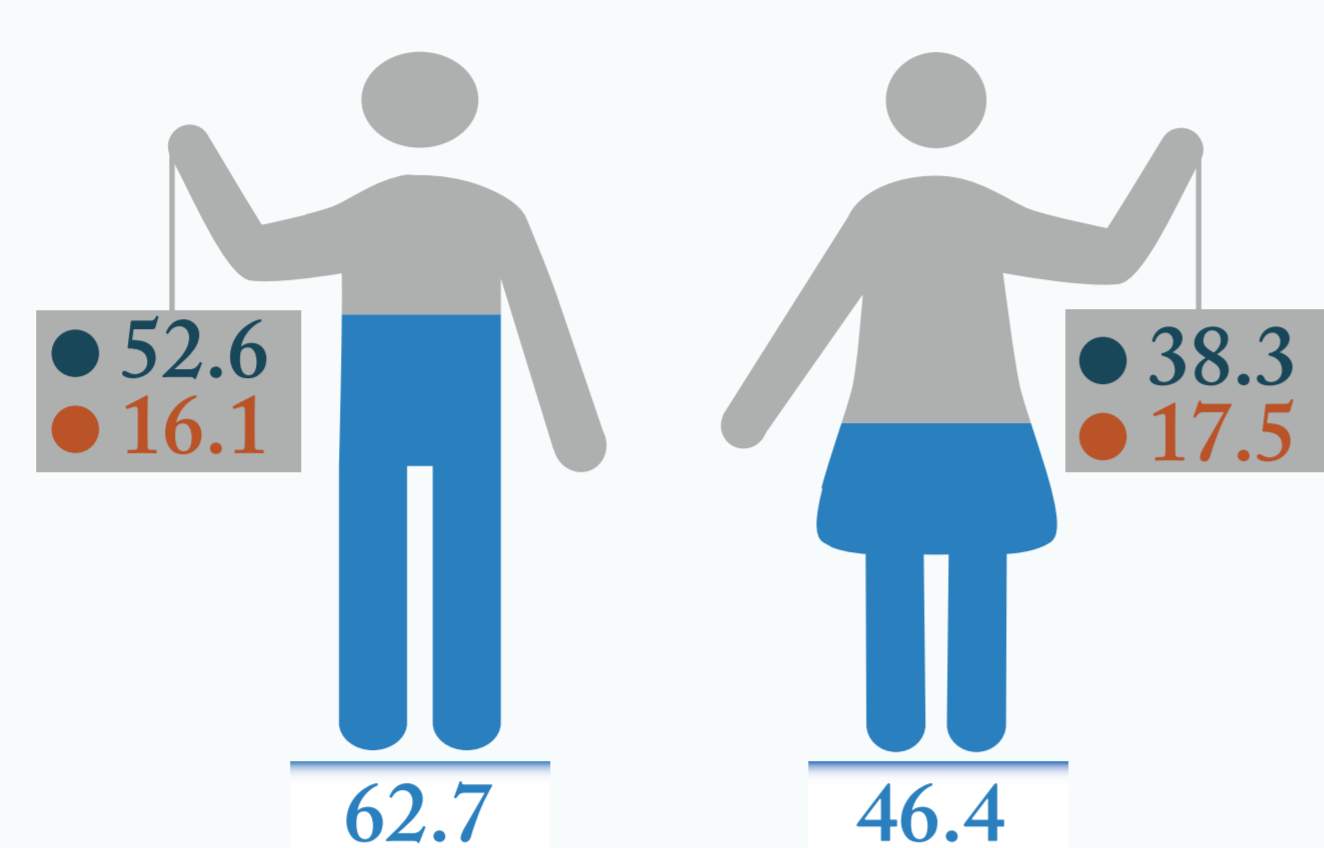
# LABOR MARKET IN RWANDA

## GENERAL DESCRIPTION OF THE LABOR FORCE

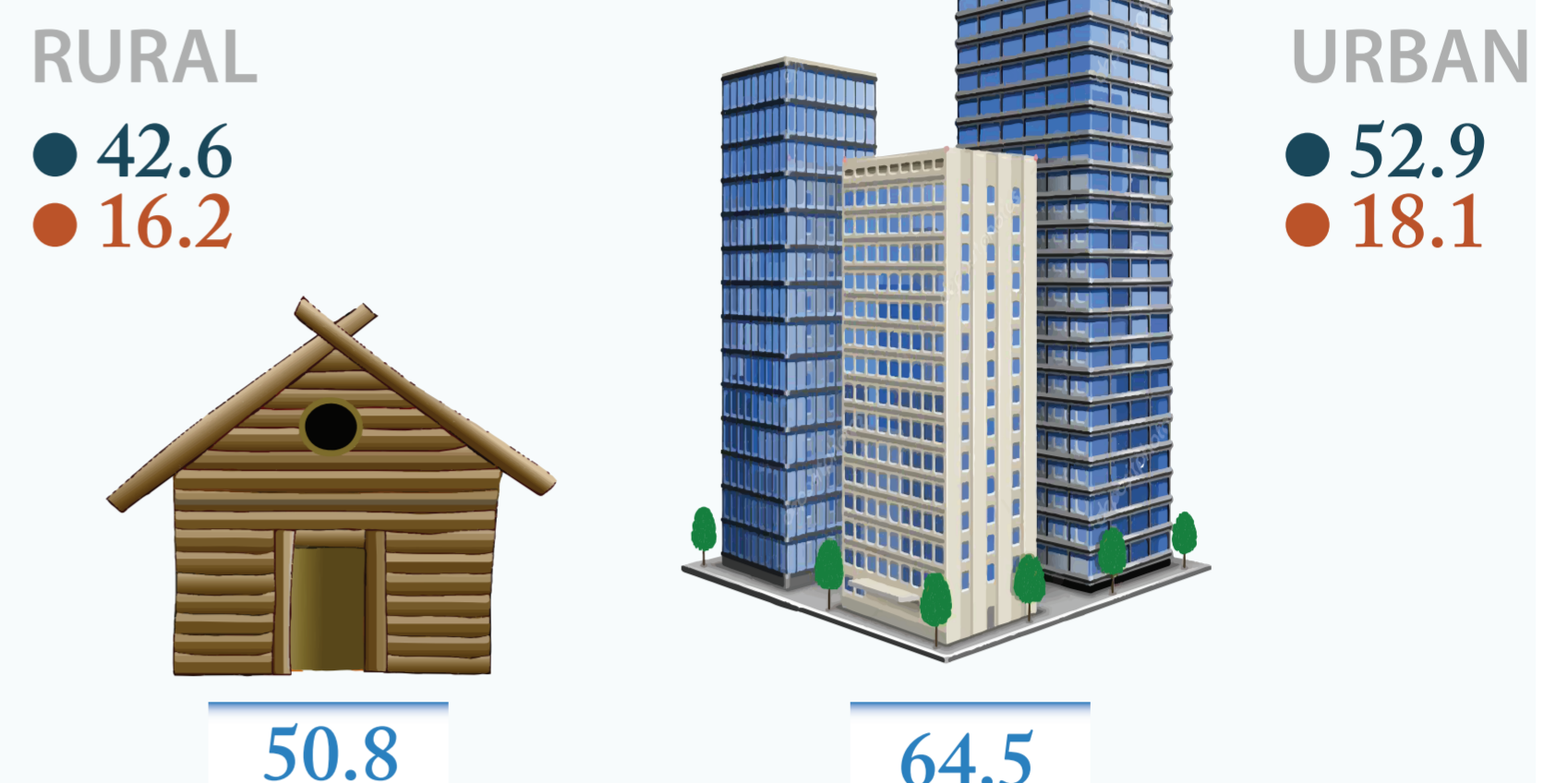


## LABOR FORCE STATUS (%)

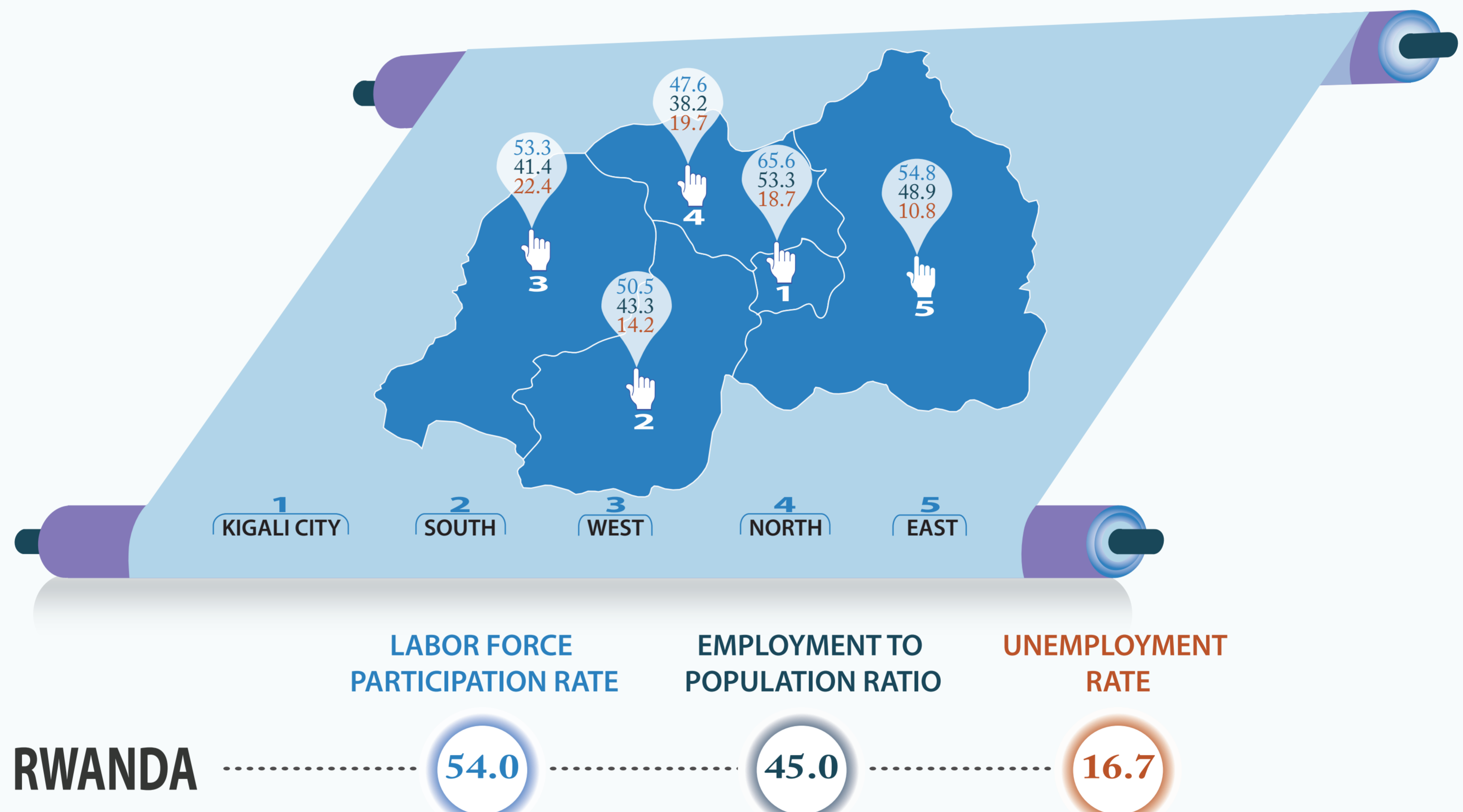
### BY SEX



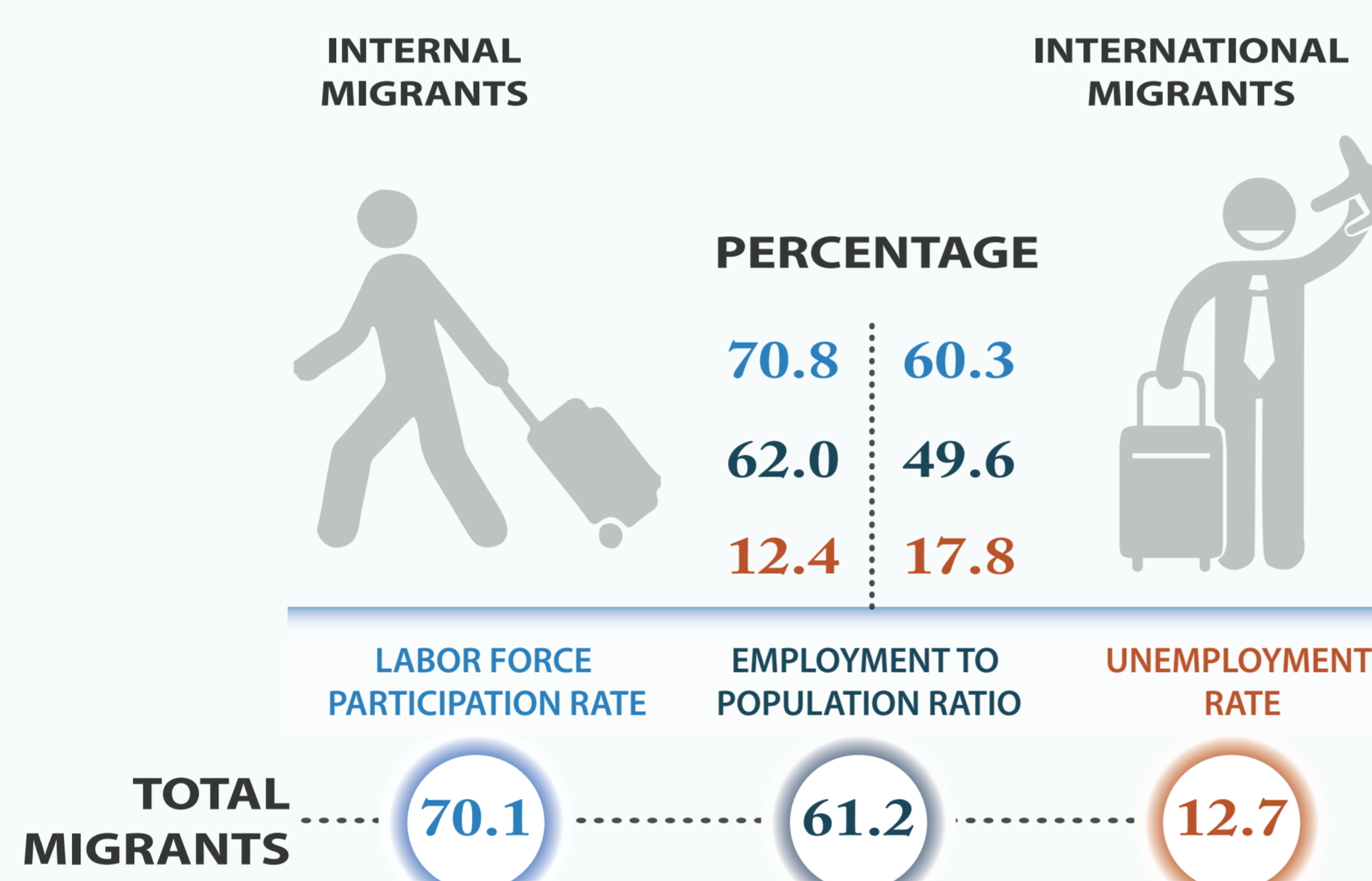
### BY AREA OF RESIDENCE



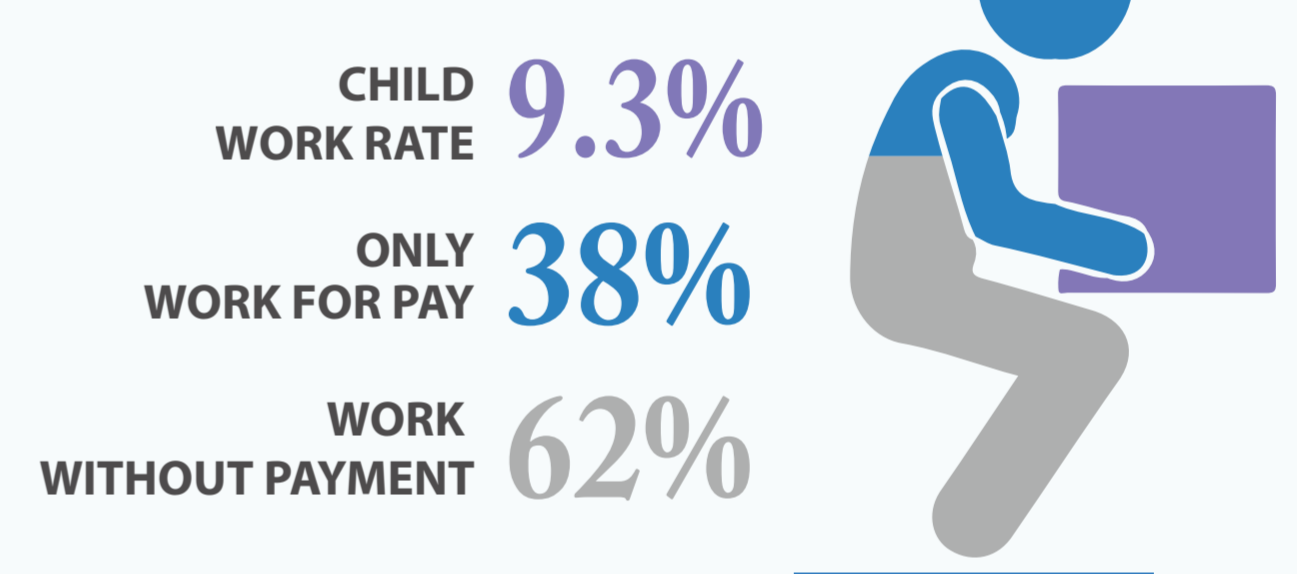
### BY PROVINCES



### WHAT ABOUT MIGRANTS?

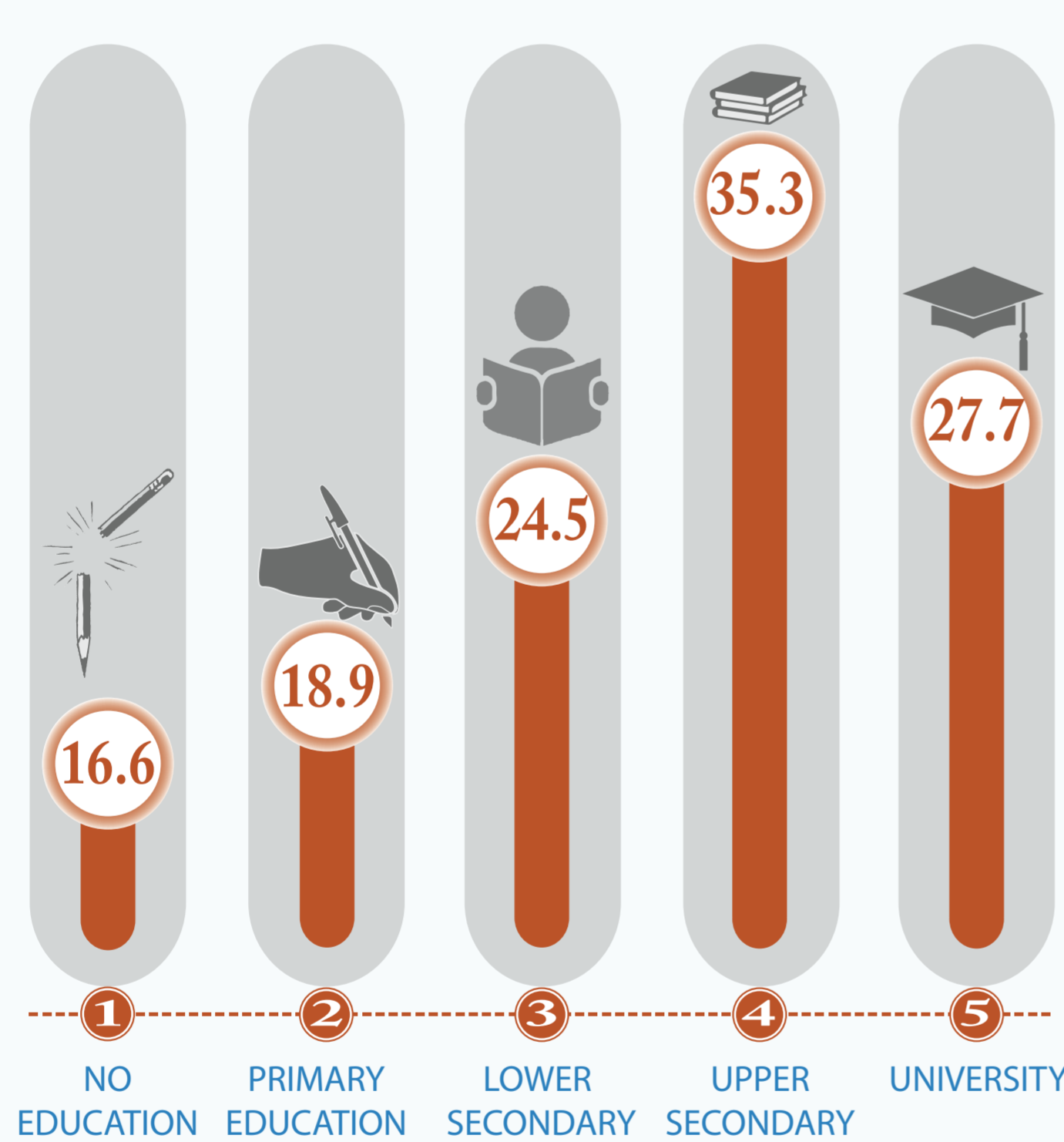


### CHILD WORK RATE



## UNEMPLOYMENT IN YOUTH

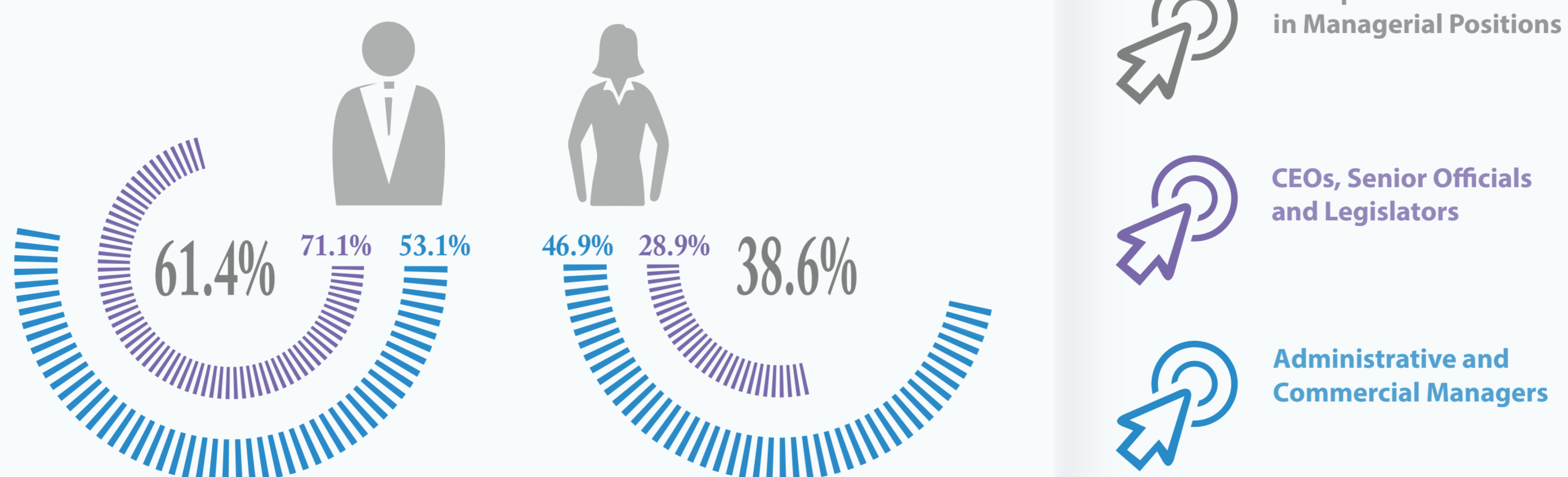
### UNEMPLOYMENT RATE BY EDUCATION ATTAINMENT



### NOT IN EMPLOYMENT AND NOT IN EDUCATION OR TRAINING

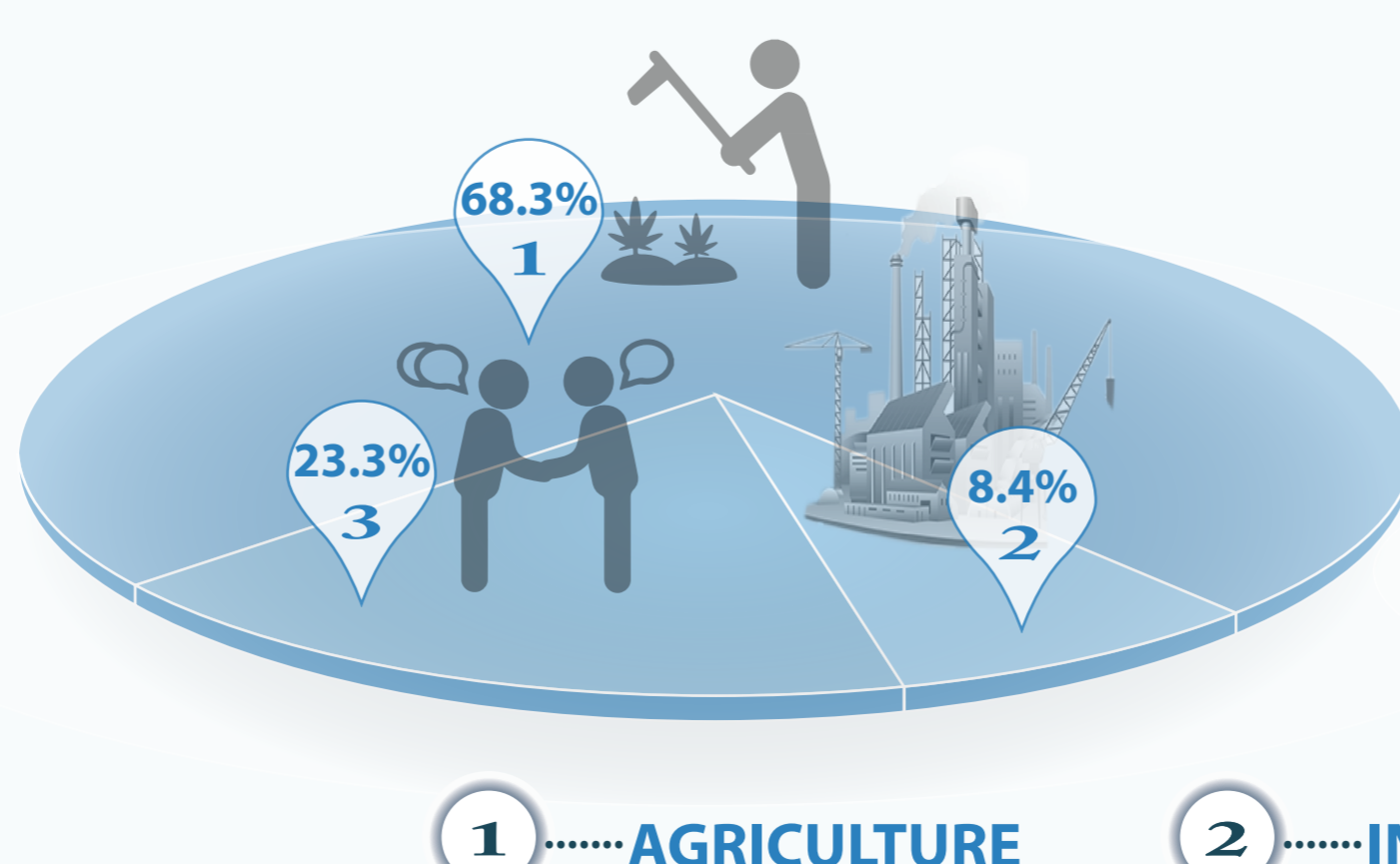


## MEN AND WOMEN IN MANAGERIAL POSITIONS

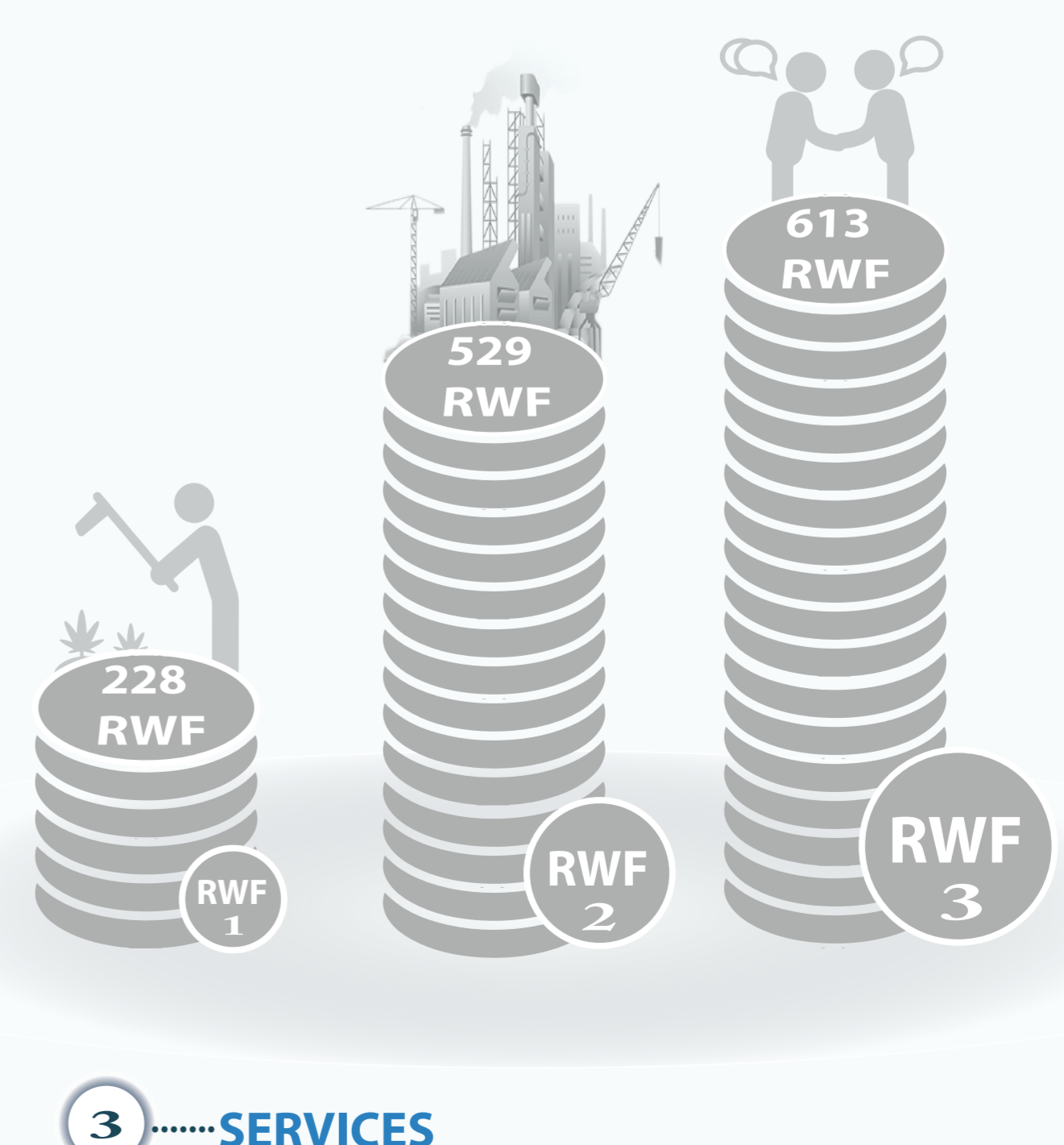


## BROAD BRANCHES OF ECONOMIC ACTIVITIES

### WHAT TO THEY DO?



### HOW MUCH DO THEY EARN PER HOUR?



SOURCE: LABOR FORCE SURVEY REPORT, February 2017