



REPUBLIC OF RWANDA



Formal External Trade in Goods

Third Quarter
2018

December 2018

Table of Contents

ACRONYMS AND ABBREVIATIONS	2
SUMMARY	3
INTRODUCTION.....	4
1. Rwanda’s Formal External Trade in Goods	6
2. Domestic Exports	7
2.1. Overview.....	7
2.2. Rwanda’s Export Markets.....	7
2.2.1. Trade Partners	7
2.2.2. East African Community Partner States	8
3. Imports.....	9
3.1. Overview.....	9
3.2 Origin of the imports of Rwanda.....	9
3.2.1 Trade Partners	9
3.2.2 East African Community Partner States.....	10
4. Re-exports	11
4.1. Overview.....	11
4.2. Rwanda’s Re-export Markets	11
4.2.1. Trade Partners	11
4.2.2. East African Community Partner States	12
5. Trade with Selected Regional Economic Organizations	13
5.1. Common Market for Eastern and Southern Africa	13
5.2. Communauté Economique des Pays de Grands Lacs	14
5.3. Southern African Development Community	14
5.4. European Union	14
5.5. Economic Community of West African States (ECOWAS).....	15
6. Appendices	17

ACRONYMS AND ABBREVIATIONS

CEPGL:	Communauté Economique de Pays de Grands Lacs
COMESA:	Common Market for Eastern and Southern Africa
CPCs:	Customs Procedures Codes
DBMS:	Database Management System
EAC:	East African Community
ECOWAS:	Economic Community of West African States
EU:	European Union
IMTS:	International Merchandise Trade Statistics
NISR:	National Institute of Statistics of Rwanda
RRA:	Rwanda Revenue Authority
SADC:	Southern African Development Community
US\$:	United States of America's Dollar

SUMMARY

In the third quarter of 2018, Rwanda's total trade amounted to US\$ 1,004.32 million, a decrease of 6.98 percent over the third quarter of 2017. Exports totaled US\$ 179.73 million, imports totaled US\$ 738.97 million and re-exports were valued at US\$ 85.61 million.

Total domestic exports increased by 20.10 percent during the period of the third quarter 2018 over the same quarter of 2017 (US\$ 179.73 million and US\$ 149.65 million respectively) and by 9.57 percent compared to the second quarter of 2018. Total imports of Rwanda decreased by 13.65 percent in the third quarter of 2018 when compared to the same quarter of 2017 (US\$ 738.97 million and US\$ 855.75 million respectively) and increased by 11.53 percent over the second quarter of 2018. Re-exports from Rwanda increased by 15.16 percent in the third quarter of 2018 over the same quarter of 2017 (US\$ 85.61 million and US\$ 74.34 million respectively) and decreased by 1.00 percent compared to the second quarter of 2018.

The top five export destinations were: the Democratic Republic of Congo, Kenya, United States of America, Switzerland and Canada. Together, these five countries accounted for 44.65 percent share of total value of domestic exports (US\$ 80.25 million).

The commodity groups with the largest export values were: "Other commodities & transactions, n.e.s" (US\$ 63.23 million), "Food and live animals" (US\$ 59.80 million) and "Crude materials, inedible, except fuels" (US\$ 41.38 million).

In terms of re-exports, the top five destinations in the third quarter of 2018 were: the Democratic Republic of Congo, Burundi, Qatar, Ethiopia and Uganda. Democratic Republic of Congo accounted for 77.84 percent share of Rwanda's total re-exports.

The most re-exported commodity group with the largest values was "Mineral fuels, lubricants and related materials" (US\$ 40.75 million), followed by "Food and live animals" (US\$ 15.38 million).

In terms of total imports (CIF); China, United Arab Emirates, Uganda, India and Kenya were the top five countries of origin of imports to Rwanda and totalized US\$ 400.68 million of imports bill (54.22% of the total value of imports).

The commodity groups with the largest values among the top imported products were: "Machinery and transport equipment" (US\$ 178.07 million), "Mineral fuels, lubricants and related materials" (US\$ 136.41 million), and "Manufactured goods classified chiefly by material" (US\$ 117.98 million).

INTRODUCTION

This Statistical Report of Formal External Trade in Goods covers the third quarter of 2018, the period running from July to September. It is produced by the External Trade Statistics Team of the Economic Statistics Department of the National Institute of Statistics of Rwanda (NISR).

One of the key mandates of the Economic Statistics Department is to compile, analyze and produce statistics and information on external trade sector following international recommendations. The data compiled by the Trade Statistics Team are provided by the Rwanda Revenue Authority (RRA), from the Customs Department, and then processed by NISR using EUROTRACE and MS Access database management systems (DBMS).

To collect and compile formal external trade statistics, NISR relies on the General Trade System under which the recorded aggregates include all goods entering or leaving the country's economic territory with the exception of simple transit trade.

Imports include goods brought in directly for domestic consumption plus goods imported into customs bonded warehouses.

Exports cover domestic exports defined as goods of national origin; that is, goods produced in the exporting country and the nationalized goods.

Re-exports which are exported in the same conditions as imported or after undergoing minor operations which leave them essentially unchanged and include re-exports from customs bonded warehouses.

Partner country is the last known country of destination for exports and the country of origin for imports by the time of compilation. This definition applies to all products with the exception of exports of tea, where the first known destination ports such as Mombasa and Dar Es Salaam are considered in accordance with the IMTS 2010 (*International Merchandise Trade Statistics: Concepts and Definitions*) recommendations.

Valuation of imports and exports: Imports are valued on a CIF (Cost, Insurance and Freight) basis while exports are valued on a FoB (Free on Board) basis.

Classification of commodities: The data are categorized by partner country and the international standard classifications such as the Harmonized Commodity Description and Coding System (HS) and the Standard International Trade Classification (SITC), all linked to the national Customs Procedure Codes (CPCs).

Furthermore, the compilation of External Trade Statistics abides by the recommendations of the *International Merchandise Trade Statistics: Concepts and Definitions 2010* (IMTS 2010) of the United Nations Statistics Division (UNSD). Hence, the data for this report are compiled on **IMTS 2010** basis (not to be confused with data compiled on Balance of Payments or National Accounts basis)

1. Rwanda's Formal External Trade in Goods

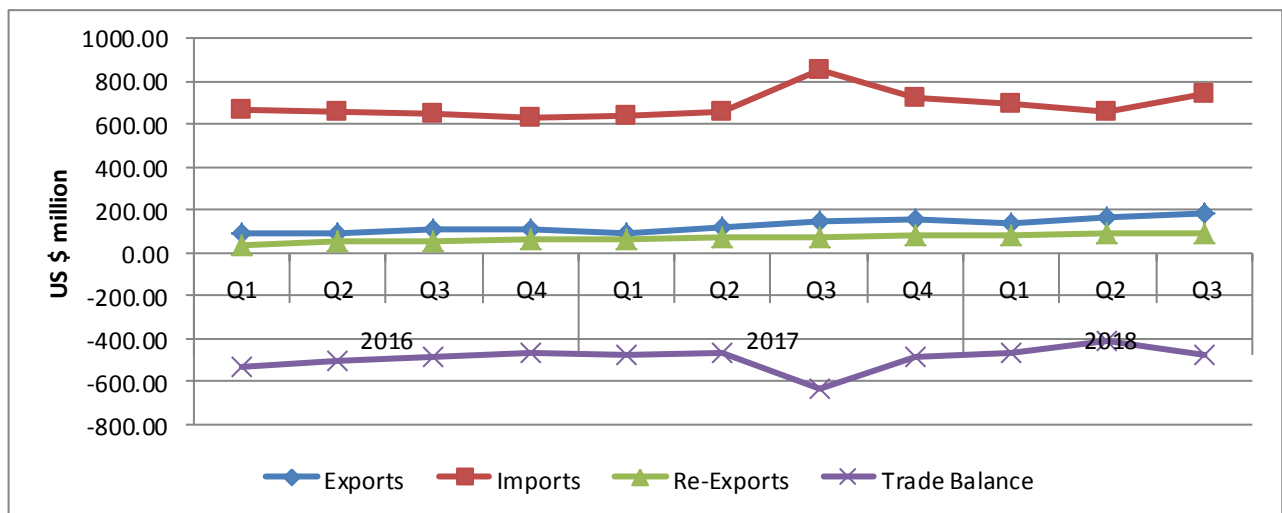
This section provides an overview of Rwanda's total trade in goods covering the period from 2016 to the third quarter of 2018, on a quarterly basis.

In the third quarter of 2018, Rwanda's total trade amounted to US\$ 1004.32 million, a decrease of 6.98 percent over the third quarter of 2017 and an increase of 9.99 percent from US\$ 913.07 million in the preceding quarter (second quarter of 2018).

Figure 1 below summarizes the balance of Rwanda's formal trade in goods. Year-over-year, the deficit on traded goods decreased considerably by 25.03 percent, from the same period in 2017.

Total imports of goods constitute 73.58 percent of total trade in goods (US\$ 738.97 million), while domestic exports constituted 17.90 percent (US\$ 179.73 million) and re-exports constituted 8.52 percent (US\$ 85.61 million). For more detailed figures, see Appendix 6.1.

Figure 1. Value of Rwanda's Formal External Trade in Goods, 2016-2018Q3



Source: NISR with raw data from RRA/Customs Department

2. Domestic Exports

2.1. Overview

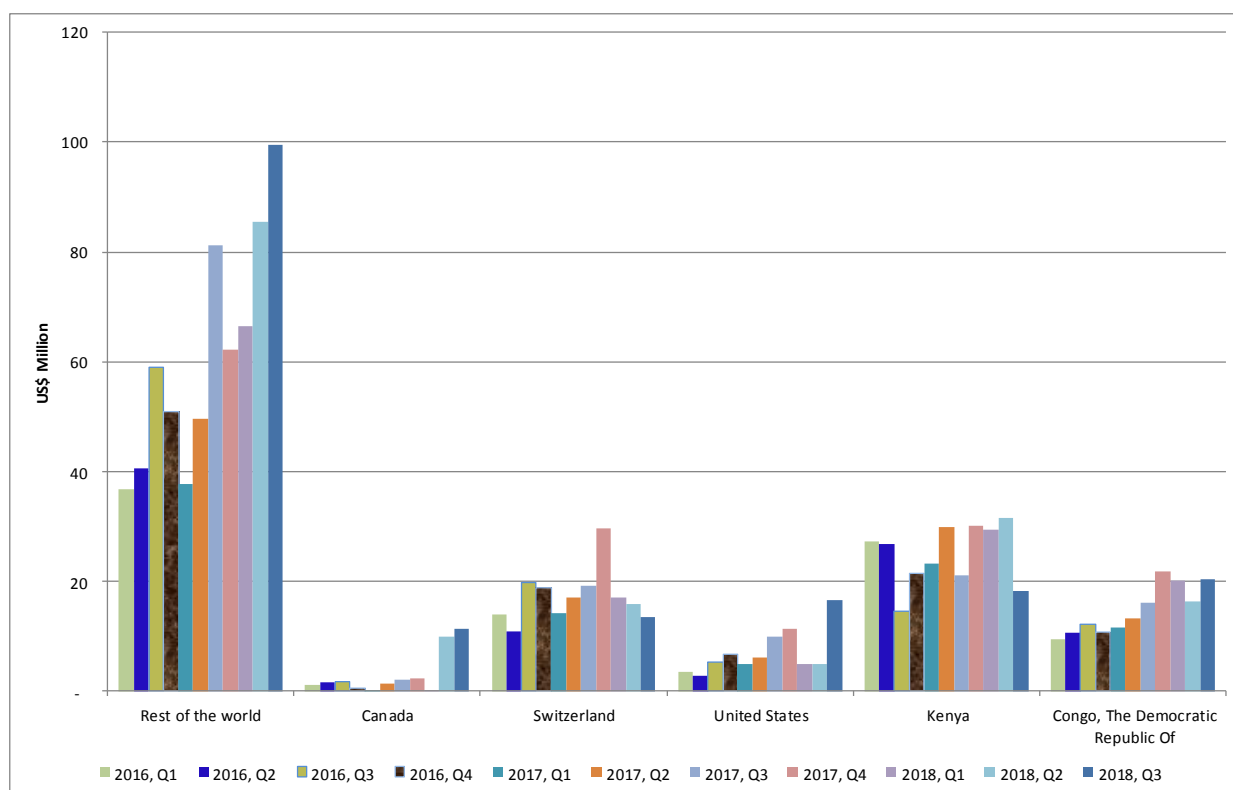
Compared to the second quarter of 2018, the third quarter of 2018 registered an increase in values of 9.57 percent, with total domestic exports amounting to US\$ 179.73 million. Year-over-year, domestic exports' values increased by 20.10 percent compared to the same quarter of 2017 (see Figure 1).

2.2. Rwanda's Export Markets

2.2.1. Trade Partners

Rwanda's key destination markets of exports during the third quarter of 2018 were the Democratic Republic of Congo (US\$ 20.42 million, 11.32 percent share), Kenya (US\$ 18.36 million, 10.21 percent share), United States (US\$ 16.51 million, 9.19 percent share), Switzerland (US\$ 13.59 million, 7.56 percent share) and Canada (US\$ 11.38 million, 6.33 percent share). Together, these five countries accounted for US\$ 80.25 million; that is 44.65 percent share of total value of domestic exports in the third quarter of 2018. Figure 2 summarizes these figures from quarter one of 2016 up to the third quarter of 2018. For the top twenty domestic exports partners see appendix 6.5a

Figure 2. Rwanda's key export partners, 2016Q1-2018Q3



Source: NISR with raw data from RRA/Customs Department

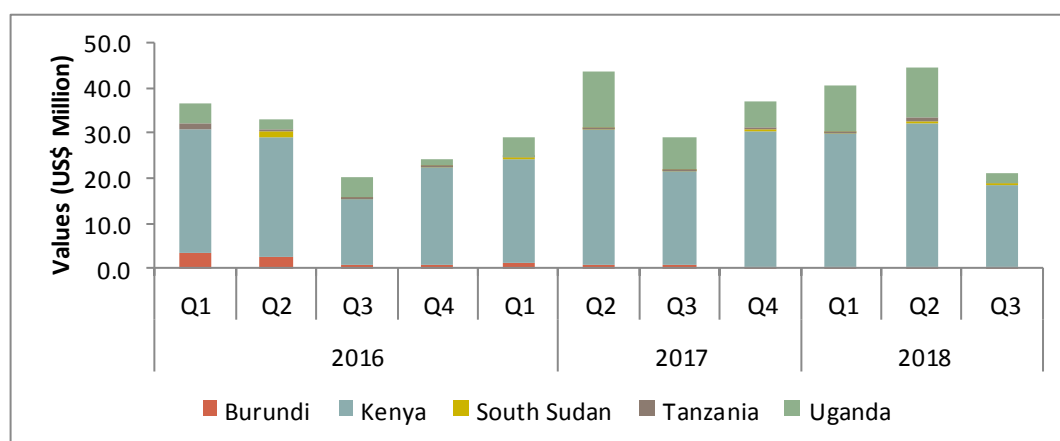
2.2.2. East African Community Partner States

Rwanda's domestic exports of US\$ 21.11 million to the East African Community Partner States in the third quarter of 2018 accounted for around 11.75 percent of total domestic exports value see appendix 6.8b. Of these, about 86.96 percent were destined to Kenya (US\$ 18.36 million). Figure 3 illustrates the total value of Rwanda's exports to EAC Partner States from 2016 up to 2018Q3.

Domestic exports' values to EAC Partner States decreased by 52.61 percent in comparison with the second quarter of 2018 and also by 27.85 percent when compared to the same quarter of 2017.

In terms of EAC export shares, Uganda followed Kenya with domestic exports from Rwanda valued at US\$ 2.23 million.

Figure 3. Exports to EAC Partner States, 2016Q1-2018Q3



Source: NISR with raw data from RRA/Customs Department.

3. Imports

3.1. Overview

The total value of imports in the third quarter of 2018 amounted to US\$ 738.97 million, an increase of 11.53 percent compared to the second quarter of 2018 which amounted to US\$ 662.55 million but also a decrease of 13.65 cent compared to the corresponding quarter of 2017 amounting US\$ 855.75 million (see Figure 1 above and appendix 6.1).

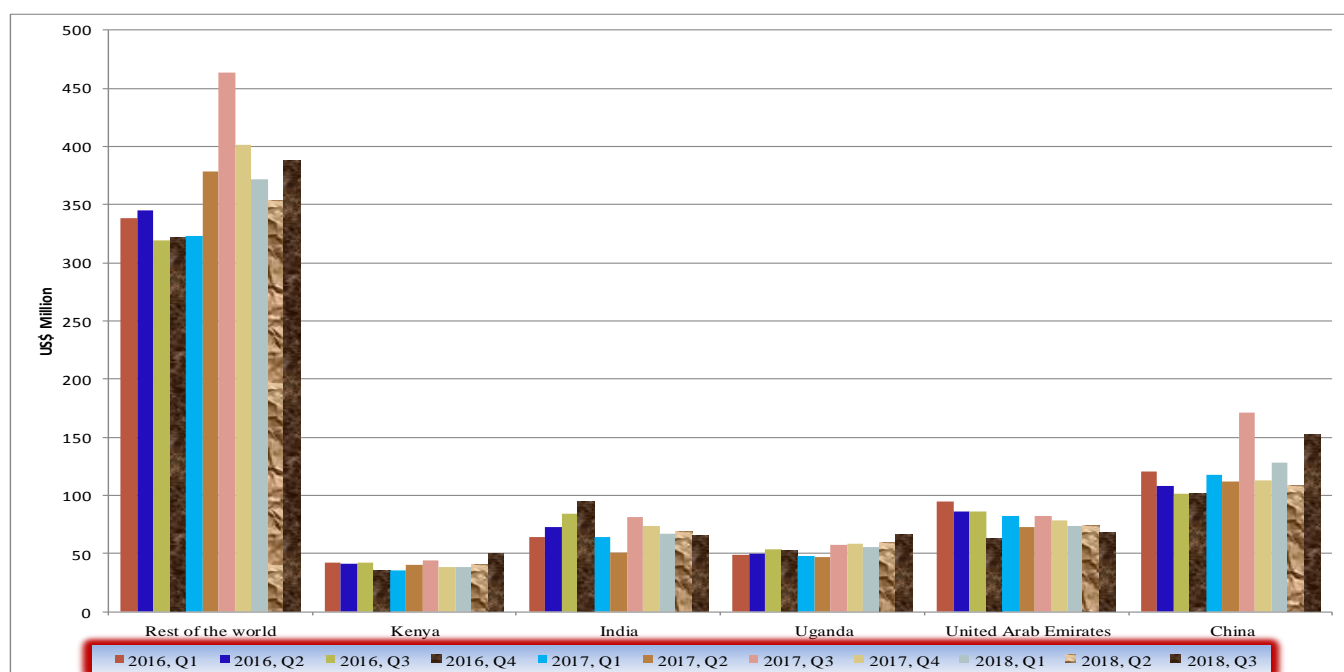
During the third quarter of 2018, the five most imported commodities in terms of USD values ranked from top to bottom were “Machinery and transport equipment”, “Mineral fuels, lubricants and related materials.”, “Manufactured goods classified chiefly by material” and “Food and live animals”

3.2 Origin of the imports of Rwanda

3.2.1 Trade Partners

In the third quarter of 2018, the top five imports of Rwanda came from the following countries: China (US\$ 151.79 million), United Arab Emirates (US\$ 68.09 million), Uganda (US\$ 65.88 million), India (US\$ 65.09 million), and Kenya (US\$ 49.83 million). A more extensive table showing the top twenty partner countries in terms of imports is provided in Appendix 6.6a.

Figure 4. Rwanda’s key imports partners, 2016Q1-2018Q3



Source: NISR with raw data from RRA/Customs Department

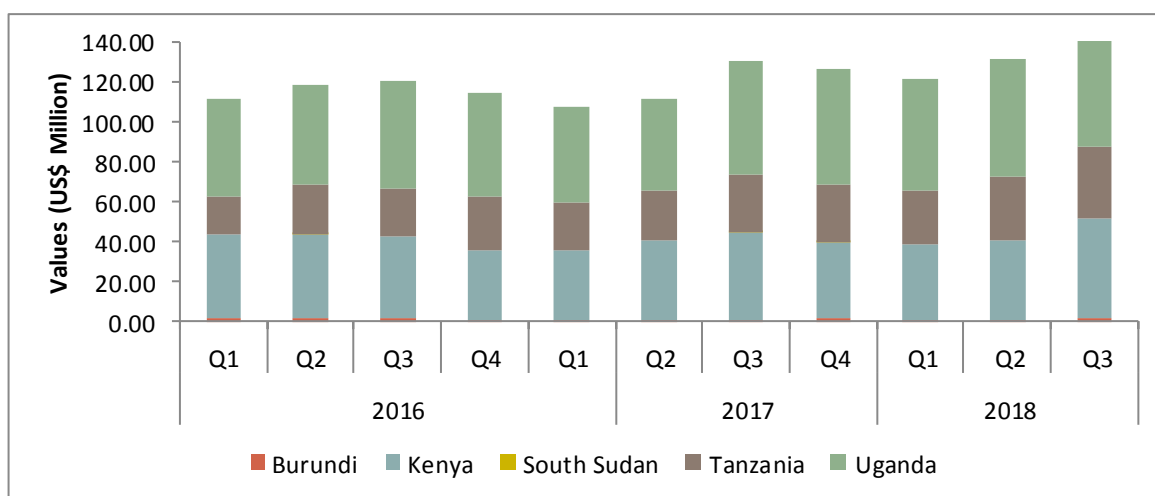
Rwanda’s main imports from China were “Machinery and transport equipment” and “Manufactured goods classified chiefly by material”. Imports from United Arab Emirates were dominated by: “Mineral fuels, lubricants and related materials”, and “Machinery and transport equipment”; Rwanda imported from India “Mineral fuels, lubricants and related materials” and “Chemicals & related products, n.e.s.”; Imports from Uganda were mainly made of “Food and live animals”, and “Manufactured goods classified chiefly by material”. Kenya’s exports to Rwanda were “Manufactured goods classified chiefly by material” and “Chemicals & related products, n.e.s”.

3.2.2 East African Community Partner States

In the third quarter of 2018, Rwanda’s imports from EAC Partner States totaled US\$ 153.75 million; representing 20.81 percent of all imported commodities (see Appendix 6.8a).

Figure 5 shows that Rwanda’s imports from EAC Partner States in the third quarter of 2018 mainly originated from Uganda and Kenya; 42.85 percent and 32.41 percent of total imports from EAC. Tanzania takes the third place with 23.60 percent share of total imports from EAC, Burundi with 1.13 percent share and the last one South Sudan with 0.00 per cent. Rwanda’s imports from EAC Partner States increased by 17.53 percent when compared to the same quarter of 2017 (US\$ 130.82 million in the third quarter of 2017).

Figure 5. Imports from EAC Partner States, 2016Q1-2018Q3



Source: NISR with raw data from RRA/Customs Department

4. Re-exports

4.1. Overview

In the third quarter of 2018, Rwanda's re-exports amounted to US\$ 85.61 million, representing a decrease of 1.00 percent over the second quarter of 2018 (from US\$ 86.48 million in the second quarter) and an increase of 15.16 percent when compared to the same quarter of 2017 (US\$ 74.34 million).

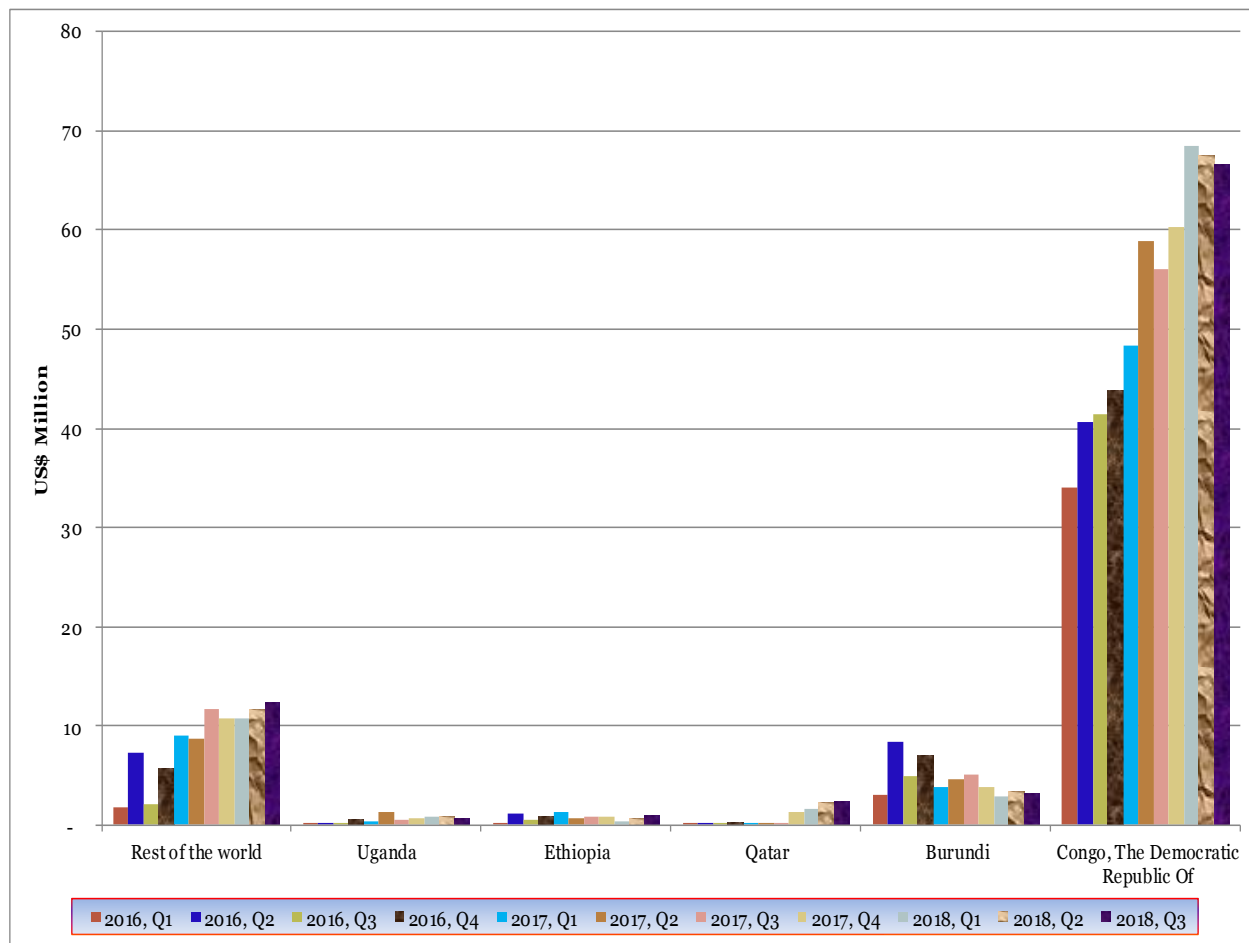
In the third quarter of 2018, the top three products re-exported by Rwanda accounted for around 77.29 percent of total Rwanda's re-exports values. These are: "Mineral fuels, lubricants and related materials", which amounted to US\$ 40.75 million, registering increases in value of 2.93 percent over the second quarter of 2018 and decreases of 2.79 percent compared to the same quarter of 2017; "Food and live animals", which amounted to US\$ 15.38 million registering a year-to-year increase of 29.05 percent and a decrease of 5.78 percent when compared with the second quarter of 2018; "Animals and vegetable oils, fats & waxes (up by 43.98 percent year-over-year and down by 6.06 percent compared to the second quarter of 2018).

4.2. Rwanda's Re-export Markets

4.2.1. Trade Partners

The analysis of re-exports figures by country of destination for the third quarter of 2018 shows that African countries were the main buyers. Out of US\$ 85.61 million of re-exports value of Rwanda, the African countries accounted for 72.59 percent of total re-exports. In the third quarter of 2018, the Democratic Republic of Congo was the main destination, with 77.84 percent share of Rwanda's total re-exports amounting to US\$ 66.64 million. Other important destinations of Rwanda's re-exports, ranked by percent share, were Burundi (3.80 per cent), Qatar (2.83 per cent), Ethiopia (1.18 per cent), Uganda (0.86 per cent) and United Arab Emirates (0.70 per cent). Figure 6 below illustrates respective quarterly values per top five destinations of Rwanda's re-exports and the rest of the world.

Figure 6. Rwanda’s key re-export partners, 2016Q1-2018Q3

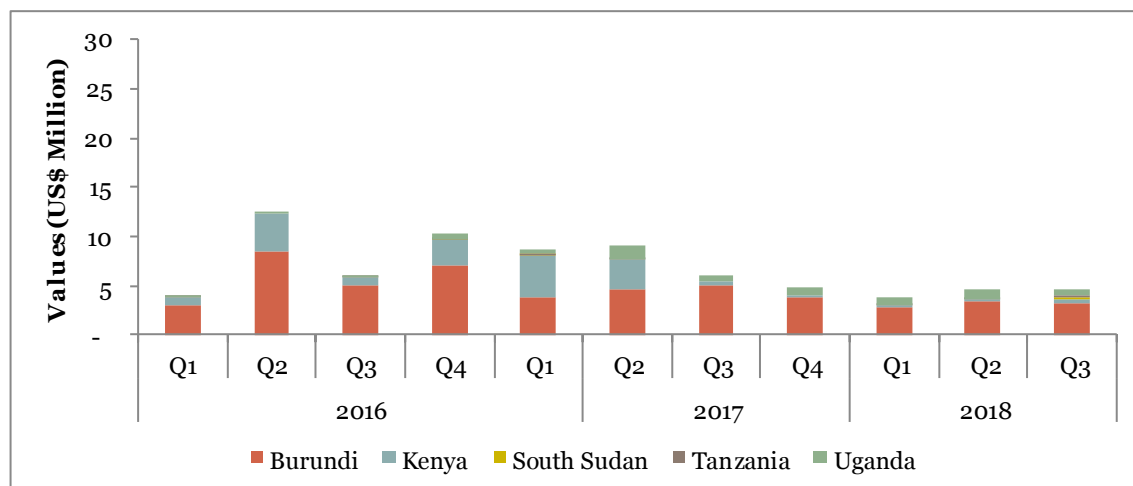


Source: NISR with raw data from RRA/Customs Department

4.2.2. East African Community Partner States

Rwanda’s re-exports to EAC Partner States decreased by 20.73 percent in value terms during the third quarter of 2018 compared to the same quarter of 2017 (US\$ 4.72 million and 5.95 US\$ million, respectively) but increased by 2.12 percent when compared to the second quarter of 2018 (US\$ 4.72 million and 4.62 million).

Figure 7. Re-Exports to EAC Partner States, 2016Q1-2018Q3



Source: NISR with raw data from RRA/Customs Department

5. Trade with Selected Regional Economic Organizations

5.1. Common Market for Eastern and Southern Africa

During the third quarter of 2018, Rwanda's total trade with the Common Market for Eastern and Southern Africa (COMESA) Member States attained US\$ 251.54 million compared to US\$ 250.50 million registered in the same quarter of 2017 and US\$ 253.33 million registered in the second quarter of 2018.

Exports to COMESA Member States decreased by around 25.59 percent in 2018Q3 when compared to the same quarter of 2017 and decreased by 31.09 compared to the second quarter of 2018 (US\$ 41.35 million during the third quarter 2018, US\$ 55.57 million during the third quarter of 2017, and US\$ 60.01 million in the second quarter of 2018).

Imports from COMESA Member States increased by 4.30 percent in 2018Q3 when compared to the same quarter of 2017 and also by 14.60 percent when compared to the second quarter of 2018.

On the re-exports side, Rwanda registered revenues estimated at US\$ 72.43 million during the third quarter of 2018 from COMESA Member States; an increase of 15.26 percent in value terms against the same quarter of 2017 and decreased by 0.92 percent when compared to the second quarter of 2018.

Thus, a deficit in trade balance of US\$ 23.99 has been registered during the 2018Q3 against the other one of US\$ 13.68 million during the third quarter of 2017. While US\$ 12.89 million has been registered also as a positive trade balance with COMESA Member States during the second quarter of 2018.

5.2. Communauté Economique des Pays de Grands Lacs

During the third quarter of 2018, total exports to Communauté Economique des Pays de Grands Lacs (CEPGL) Member States (Burundi and the Democratic Republic of Congo), including re-exports, totaled US\$ 90.51 million and total imports were US\$ 4.22 million. Therefore, the trade in goods surplus with CEPGL member states totaled US\$ 86.29 million compared to US\$ 75.00 million registered in the same quarter of 2017 and to US\$ 84.09 million in the second quarter of 2018.

5.3. Southern African Development Community

Rwanda's total trade with the Southern African Development Community (SADC) Member States totaled US\$ 152.95 million during the third quarter of 2018 compared to US\$ 151.95 million in the third quarter of 2017 and US\$ 150.38 million during the second quarter of 2018.

Year-over-year, domestic exports to the SADC increased by 23.52 percent, from US\$ 17.11 million in the third quarter of 2017 to US\$ 21.13 million in the third quarter of 2018; while total imports decreased by about 17.59 percent, from US\$ 78.86 million to US\$ 64.99 million. Over the same period, re-exports increased by 19.38 percent, from US\$ 55.98 million to 66.83 US\$ million.

Therefore, the trade in goods surplus with SADC totaled US\$ 22.98 million compared to a deficit of US\$ 5.77 million during the same quarter of 2017 and to a surplus of US\$ 19.75 million in the second quarter of 2018.

5.4. European Union

Trade in goods with the European Union (EU) in the third quarter of 2018 totaled US\$ 98.67 against US\$ 126.42 million registered in the same quarter of 2017 and US\$ 88.78 million in the second quarter of 2018.

The quarterly exports to EU Member Countries decreased by 4.48 percent when compared to the same quarter of 2017 (US\$ 16.62 million against US\$ 17.40 million). The total value of imports from EU decreased by 22.87 percent during the third quarter of 2018 over the same quarter of 2017 (US\$ 81.35 million against US\$ 105.47 million).

Re-exports to EU decreased by 80.25 percent during the third quarter of 2018 over the same quarter of 2017 (US\$ 0.70 million and US\$ 3.54 million respectively).

To sum, Rwanda's trade with EU registered a trade deficit of US\$ 64.03 million in the third quarter of 2018 and of US\$ 84.53 million in the third quarter of 2017 while US\$ 52.25 million has been registered as deficit in the second quarter of 2018.

5.5. Economic Community of West African States (ECOWAS)

During the third quarter of 2018, total exports to the Economic Community of West African States (ECOWAS) Member Countries, including re-exports, totaled US\$ 0.05 million and the total imports were US\$ 0.52 million. Therefore, the trade in goods deficit with ECOWAS Member States extended to US\$ 0.46 million from the trade deficit of US\$ 0.01 million in the same quarter of 2017.

Contacts:

National Institute of Statistics of Rwanda (NISR),

P.O. BOX 6139 Kigali, Tel.: (250) 571035 Fax: (250) 570705.

Web site: www.statistics.gov.rw

Publication Directors:

MURANGWA Yusuf, Director General, NISR

MURENZI Ivan, Deputy Director General, NISR

MWIZERWA Jean Claude

Ag. Director of Economic Statistics Department, NISR;

claude.mwizerwa@statistics.gov.rw

NZASINGIZIMANA Tharcisse, Trade and Services Statistics Team Leader, NISR;

tharcisse.nzasingizimana@statistics.gov.rw

6. Appendices

Appendix 6.1. Summary of External Merchandise Trade, 2017Q1 - 2018Q3

Value: US\$ Million

Shares in percentages

	2017Q1	2017Q2	2017Q3	2017Q4	2018Q1	2018Q2	2018Q3	2017Q1	2017Q2	2017Q3	2017Q4	2018Q1	2018Q2	2018Q3
Exports of goods	155.03	191.83	223.99	235.32	223.05	250.51	265.35	19.60	22.51	20.74	24.53	24.29	27.44	26.42
<i>Domestic exports</i>	<i>92.02</i>	<i>117.44</i>	<i>149.65</i>	<i>157.63</i>	<i>138.15</i>	<i>164.03</i>	<i>179.73</i>	<i>11.64</i>	<i>13.78</i>	<i>13.86</i>	<i>16.43</i>	<i>15.05</i>	<i>17.97</i>	<i>17.90</i>
<i>Re-exports</i>	<i>63.01</i>	<i>74.39</i>	<i>74.34</i>	<i>77.70</i>	<i>84.9</i>	<i>86.48</i>	<i>85.61</i>	<i>7.97</i>	<i>8.73</i>	<i>6.89</i>	<i>8.10</i>	<i>9.25</i>	<i>9.47</i>	<i>8.52</i>
Imports of goods	635.79	660.30	855.75	724.15	695.17	662.55	738.97	80.40	77.49	79.26	75.47	75.71	72.56	73.58
A. Total Exports (f.o.b.)	155.03	191.83	223.99	235.32	223.05	250.51	265.35							
B. Total Imports (c.i.f.)	635.79	660.30	855.75	724.15	695.17	662.55	738.97							
Total Value of Trade (A+B)	790.82	852.13	1,079.74	959.48	918.22	913.06	1,004.32	100.00	100.00	100.00	100.00	100.00	100.00	100.00
Balance of Trade (A-B)	-480.76	-468.47	-631.76	-488.83	-472.12	-412.04	-473.63							

Source: NISR with raw data from RRA/Customs

Appendix 6.2a. Exported goods, 2016Q1 - 2018Q3 (Value: US\$ Million)

Year and Period		2016Q1	2016Q2	2016Q3	2016Q4	2017Q1	2017Q2	2017Q3	2017Q4	2018Q1	2018Q2	2018Q3
SITC SECTION	COMMODITY DESCRIPTION/ TOTAL ESTIMATES	92.10	93.29	112.41	109.50	92.02	117.44	149.65	157.63	138.15	164.03	179.73
0	Food and live animals	42.84	44.19	46.35	48.42	40.46	57.13	62.77	74.75	64.93	63.72	59.80
1	Beverages and tobacco	0.16	0.22	0.21	0.08	0.17	0.07	0.02	0.04	0.01	0.03	0.01
2	Crude materials, inedible, except fuels	22.72	26.41	25.39	26.62	29.74	30.68	38.43	45.09	37.47	44.74	41.38
3	Mineral fuels, lubricants and related materials	0.12	0.06	0.04	0.07	0.04	0.05	0.07	0.02	0.05	0.07	0.05
4	Animals and vegetable oils, fats & waxes	0.03	0.03	0.04	0.04	0.03	0.07	0.06	0.06	0.01	0.11	0.00
5	Chemicals & related products, n.e.s.	0.43	0.47	0.81	0.77	0.58	0.65	0.63	0.67	0.66	0.56	0.57
6	Manufactured goods classified chiefly by material	5.18	2.97	4.66	3.65	5.48	6.94	8.07	6.81	5.74	5.26	7.45
7	Machinery and transport equipment	6.29	1.49	5.14	1.94	1.83	3.18	11.76	1.86	1.20	2.81	3.73
8	Miscellaneous manufactured articles	2.15	3.23	2.34	2.20	1.58	2.32	4.20	2.96	3.26	2.95	3.50
9	Other commodities & transactions, n.e.s	12.18	14.21	27.43	25.70	12.10	16.34	23.63	25.35	24.77	43.70	63.23

Source: NISR with raw data from RRA/Customs

Appendix 6.2b. Exported goods, shares in percentage 2016Q1- 2018Q3

Year and Period		2016Q1	2016Q2	2016Q3	2016Q4	2017Q1	2017Q2	2017Q3	2017Q4	2018Q1	2018Q2	2018Q3
SITC SECTION	COMMODITY DESCRIPTION/ TOTAL ESTIMATES	100.00	100.00	100.00	100.00	100.00	100.00	100.00	100.00	100.00	100.00	100.00
0	Food and live animals	46.51	47.37	41.24	44.22	43.97	48.65	41.95	47.42	47.00	38.85	33.27
1	Beverages and tobacco	0.18	0.23	0.19	0.08	0.19	0.06	0.01	0.03	0.01	0.02	0.01
2	Crude materials, inedible, except fuels	24.67	28.31	22.58	24.31	32.31	26.12	25.68	28.60	27.12	27.28	23.02
3	Mineral fuels, lubricants and related materials	0.13	0.06	0.04	0.06	0.05	0.04	0.05	0.01	0.04	0.04	0.03
4	Animals and vegetable oils, fats & waxes	0.03	0.04	0.04	0.03	0.04	0.06	0.04	0.04	0.01	0.06	0.00
5	Chemicals & related products, n.e.s.	0.46	0.50	0.72	0.71	0.64	0.55	0.42	0.42	0.48	0.34	0.32
6	Manufactured goods classified chiefly by material	5.63	3.19	4.15	3.34	5.95	5.91	5.39	4.32	4.15	3.20	4.15
7	Machinery and transport equipment	6.83	1.60	4.57	1.77	1.99	2.71	7.86	1.18	0.87	1.71	2.07
8	Miscellaneous manufactured articles	2.33	3.46	2.08	2.01	1.72	1.97	2.81	1.88	2.36	1.80	1.95
9	Other commodities & transactions, n.e.s	13.22	15.23	24.40	23.47	13.15	13.92	15.79	16.08	17.93	26.64	35.18

Source: NISR with raw data from RRA/Customs

Appendix 6.3a.Imported goods, 2016Q1- 2018Q3 (Value: US\$ Million)

Year and Period		2016Q1	2016Q2	2016Q3	2016Q4	2017Q1	2017Q2	2017Q3	2017Q4	2018Q1	2018Q2	2018Q3
SITC SECTION	COMMODITY DESCRIPTION/ TOTAL ESTIMATES	666.43	660.60	644.46	633.55	635.79	660.30	855.75	724.15	695.17	662.55	738.97
0	Food and live animals	83.67	80.99	88.06	95.17	108.65	105.51	126.05	121.05	98.23	108.80	100.68
1	Beverages and tobacco	4.99	6.95	5.74	8.01	8.01	6.36	8.78	9.05	7.17	8.93	15.52
2	Crude materials, inedible, except fuels	18.58	21.21	13.55	17.54	15.01	16.03	18.57	16.60	15.09	16.21	18.16
3	Mineral fuels, lubricants and related materials	112.51	100.16	120.31	125.95	108.02	101.54	108.74	106.36	124.24	120.73	136.41
4	Animals and vegetable oils, fats & waxes	23.59	19.34	26.74	25.60	21.11	31.72	31.92	22.31	26.59	29.43	30.31
5	Chemicals & related products, n.e.s.	64.21	73.67	77.47	66.28	64.43	78.51	101.60	96.28	79.66	79.56	86.81
6	Manufactured goods classified chiefly by material	104.92	106.50	115.35	104.95	100.43	97.36	133.58	110.21	105.73	99.31	117.98
7	Machinery and transport equipment	185.42	188.96	146.34	136.89	158.68	162.05	251.95	188.49	176.08	144.97	178.07
8	Miscellaneous manufactured articles	68.54	62.82	50.91	53.16	51.45	61.22	73.76	50.52	59.07	51.02	49.28
9	Other commodities & transactions, n.e.s	0.00	0.00	0.00	0.00	0.00	0.00	0.00	0.00	0.00	0.00	0.00

Source: NISR with raw data from RRA/Customs

Appendix 6.3b. Imported goods, shares in percentage 2016Q1-2018Q3

Year and Period		2016Q1	2016Q2	2016Q3	2016Q4	2017Q1	2017Q2	2017Q3	2017Q4	2018Q1	2018Q2	2018Q3
SITC SECTION	COMMODITY DESCRIPTION/ TOTAL ESTIMATES	100.00	100.00	100.00	100.00	100.00	100.00	100.00	100.00	100.00	100.00	100.00
0	Food and live animals	12.55	12.26	13.66	15.02	17.09	15.98	14.73	16.72	14.13	16.42	13.62
1	Beverages and tobacco	0.75	1.05	0.89	1.26	1.26	0.96	1.03	1.25	1.03	1.35	2.10
2	Crude materials, inedible, except fuels	2.79	3.21	2.10	2.77	2.36	2.43	2.17	2.29	2.17	2.45	2.46
3	Mineral fuels, lubricants and related materials	16.88	15.16	18.67	19.88	16.99	15.38	12.71	14.69	17.87	18.22	18.46
4	Animals and vegetable oils, fats & waxes	3.54	2.93	4.15	4.04	3.32	4.80	3.73	3.08	3.83	4.44	4.10
5	Chemicals & related products, n.e.s.	9.64	11.15	12.02	10.46	10.13	11.89	11.87	13.30	11.46	12.01	11.75
6	Manufactured goods classified chiefly by material	15.74	16.12	17.90	16.57	15.80	14.74	15.61	15.22	15.21	14.99	15.97
7	Machinery and transport equipment	27.82	28.60	22.71	21.61	24.96	24.54	29.44	26.03	25.33	21.88	24.10
8	Miscellaneous manufactured articles	10.29	9.51	7.90	8.39	8.09	9.27	8.62	6.98	8.50	7.70	6.67
9	Other commodities & transactions, n.e.s	0.00	0.00	0.00	0.00	0.00	0.00	0.00	0.00	0.00	0.00	0.00

Source: NISR with raw data from RRA/Customs

Appendix 6.4a. Re-exported goods, 2016Q1- 2018Q3 (Value: US\$ Million)

Year and Period		2016Q1	2016Q2	2016Q3	2016Q4	2017Q1	2017Q2	2017Q3	2017Q4	2018Q1	2018Q2	2018Q3
SITC SECTION	DESCRIPTION/ TOTAL ESTIMATES	38.94	57.56	49.15	57.93	63.01	74.39	74.34	77.70	84.90	86.48	85.61
0	Food and live animals	9.72	9.49	7.04	9.88	11.11	13.51	11.92	15.77	17.31	16.32	15.38
1	Beverages and tobacco	0.65	0.75	0.90	0.97	0.84	1.32	1.55	1.51	1.64	1.44	1.30
2	Crude materials, inedible, except fuels	0.16	0.34	1.54	2.47	3.43	4.26	4.16	4.02	3.63	3.38	4.21
3	Mineral fuels, lubricants and related materials	16.21	34.46	26.10	32.21	36.05	41.04	41.92	38.93	40.98	39.59	40.75
4	Animals and vegetable oils, fats & waxes	6.94	6.33	6.70	6.68	6.03	7.08	6.97	8.22	9.73	10.68	10.03
5	Chemicals & related products, n.e.s.	0.92	1.57	2.07	1.52	1.92	1.92	1.79	2.36	2.31	3.05	3.04
6	Manufactured goods classified chiefly by material	1.19	1.39	1.62	0.68	0.88	1.52	1.94	1.24	1.63	3.29	3.60
7	Machinery and transport equipment	2.13	1.89	1.53	2.26	1.35	2.25	2.43	3.99	5.05	6.39	4.54
8	Miscellaneous manufactured articles	1.02	1.34	1.64	1.24	1.40	1.49	1.63	1.63	2.52	2.30	2.61
9	Other commodities & transactions, n.e.s	0.00	0.00	0.00	0.00	0.00	0.00	0.00	0.00	0.00	0.00	0.00

Source: NISR with raw data from RRA/Customs

Appendix 6.4b. Re-exported goods, shares in percentage 2016Q1- 2018Q3

Year and Period		2016Q1	2016Q2	2016Q3	2016Q4	2017Q1	2017Q2	2017Q3	2017Q4	2018Q1	2018Q2	2018Q3
SITC SECTION	DESCRIPTION/ TOTAL ESTIMATES	100.00	100.00	100.00	100.00	100.00	100.00	100.00	100.00	100.00	100.00	100.00
0	Food and live animals	24.96	16.49	14.33	17.06	17.63	18.15	16.03	20.29	20.38	18.88	17.97
1	Beverages and tobacco	1.66	1.31	1.84	1.68	1.34	1.78	2.09	1.94	1.93	1.66	1.52
2	Crude materials, inedible, except fuels	0.40	0.60	3.13	4.27	5.44	5.72	5.59	5.17	4.27	3.91	4.92
3	Mineral fuels, lubricants and related materials	41.64	59.87	53.11	55.60	57.21	55.16	56.39	50.10	48.26	45.78	47.60
4	Animals and vegetable oils, fats & waxes	17.83	10.99	13.63	11.54	9.56	9.52	9.37	10.58	11.46	12.35	11.72
5	Chemicals & related products, n.e.s.	2.38	2.73	4.21	2.63	3.04	2.59	2.41	3.04	2.72	3.53	3.55
6	Manufactured goods classified chiefly by material	3.07	2.41	3.30	1.18	1.40	2.04	2.61	1.59	1.92	3.80	4.20
7	Machinery and transport equipment	5.47	3.28	3.11	3.90	2.15	3.03	3.27	5.13	5.95	7.39	5.31
8	Miscellaneous manufactured articles	2.61	2.33	3.34	2.14	2.22	2.01	2.19	2.09	2.97	2.66	3.05
9	Other commodities & transactions, n.e.s	0.00	0.00	0.00	0.00	0.00	0.00	0.00	0.00	0.00	0.00	0.00

Source: NISR with raw data from RRA/Customs

Appendix 6.5a. Top twenty domestic exports partners, 2016Q1-2018Q3 (Value: US\$ Million)

Year and Period	2016Q1	2016Q2	2016Q3	2016Q4	2017Q1	2017Q2	2017Q3	2017Q4	2018Q1	2018Q2	2018Q3
COUNTRY OF DESTINATION	92.10	93.29	112.41	109.50	92.02	117.44	149.65	157.63	138.15	164.03	179.73
Congo, The Democratic Republic Of	9.51	10.60	12.13	10.79	11.62	13.31	16.10	21.81	20.18	16.35	20.42
Kenya	27.32	26.87	14.48	21.54	23.27	29.89	21.01	30.12	29.35	31.65	18.36
United States	3.45	2.89	5.40	6.73	4.89	6.11	9.95	11.46	4.91	4.91	16.51
Switzerland	13.94	10.94	19.76	18.93	14.28	17.16	19.23	29.74	17.01	15.91	13.59
Canada	1.02	1.52	1.74	0.62	0.28	1.30	2.11	2.34	0.11	9.82	11.38
Kazakhstan	0.00	0.00	0.00	2.30	0.47	3.55	4.35	4.84	4.51	8.25	9.82
Singapore	3.78	6.35	6.08	4.00	3.49	2.59	12.26	11.36	8.47	7.46	8.57
China	1.54	3.31	3.98	2.13	0.55	2.11	5.50	4.24	1.28	1.01	4.98
Belgium	2.50	2.72	5.37	2.75	3.06	4.62	6.12	7.05	2.99	5.80	4.24
United Kingdom	0.27	0.27	3.00	1.31	0.50	0.73	3.93	3.54	0.88	1.49	3.24
Hong Kong	2.37	3.34	2.06	3.89	4.93	1.90	4.08	5.79	3.43	3.98	3.06
Germany	0.34	0.25	0.78	0.58	1.58	3.53	0.62	0.51	3.35	3.33	2.60
Luxembourg	0.90	0.16	0.43	0.74	0.34	1.17	2.06	2.85	0.91	4.06	2.30
Uganda	4.60	2.13	4.69	1.52	4.21	12.42	7.04	5.61	10.45	11.21	2.23
Italy	0.75	0.50	1.04	0.45	0.00	0.20	1.26	0.12	0.35	0.55	1.33
Viet Nam	0.12	0.00	0.09	0.07	0.00	0.00	0.13	0.15	0.09	1.00	1.32
Malaysia	0.92	1.88	1.45	3.07	0.78	0.50	0.15	0.24	1.27	0.48	1.19
Thailand	0.21	0.53	0.03	0.00	0.00	0.00	0.00	0.03	0.07	0.03	1.06
Japan	0.12	0.00	0.81	0.62	0.04	0.01	0.96	0.42	0.01	0.04	0.89
Netherlands	0.11	0.14	0.16	0.37	0.64	0.62	0.76	0.95	1.96	1.57	0.86

Source: NISR with raw data from RRA/Customs

Appendix 6.5b. Top twenty domestic exports partners, shares in percentage, 2016Q1- 2018Q3

Year and Period	2016Q1	2016Q2	2016Q3	2016Q4	2017Q1	2017Q2	2017Q3	2017Q4	2018Q1	2018Q2	2018Q3
COUNTRY OF DESTINATION	100.00	100.00	100.00	100.00	100.00	100.00	100.00	100.00	100.00	100.00	100.00
Congo, The Democratic Republic Of	10.33	11.36	10.79	9.86	12.63	11.33	10.76	13.84	14.61	9.97	11.36
Kenya	29.66	28.80	12.88	19.67	25.29	25.45	14.04	19.11	21.24	19.30	10.21
United States	3.74	3.10	4.80	6.15	5.31	5.20	6.65	7.27	3.56	2.99	9.19
Switzerland	15.13	11.72	17.58	17.29	15.51	14.61	12.85	18.87	12.31	9.70	7.56
Canada	1.10	1.63	1.55	0.57	0.30	1.11	1.41	1.49	0.08	5.99	6.33
Kazakhstan	0.00	0.00	0.00	2.10	0.51	3.02	2.90	3.07	3.26	5.03	5.46
Singapore	4.10	6.80	5.41	3.65	3.79	2.21	8.19	7.21	6.13	4.55	4.77
China	1.67	3.54	3.54	1.95	0.60	1.80	3.68	2.69	0.93	0.62	2.77
Belgium	2.71	2.92	4.78	2.51	3.32	3.93	4.09	4.47	2.16	3.53	2.36
United Kingdom	0.29	0.29	2.67	1.20	0.54	0.62	2.63	2.24	0.63	0.91	1.80
Hong Kong	2.57	3.58	1.83	3.55	5.36	1.62	2.72	3.68	2.48	2.43	1.70
Germany	0.37	0.27	0.69	0.53	1.72	3.00	0.42	0.33	2.42	2.03	1.45
Luxembourg	0.97	0.17	0.39	0.68	0.37	0.99	1.37	1.81	0.66	2.48	1.28
Uganda	4.99	2.29	4.17	1.39	4.58	10.58	4.70	3.56	7.56	6.83	1.24
Italy	0.81	0.54	0.93	0.41	0.00	0.17	0.84	0.08	0.25	0.33	0.74
Viet Nam	0.14	0.00	0.08	0.06	0.00	0.00	0.08	0.10	0.06	0.61	0.74
Malaysia	1.00	2.01	1.29	2.80	0.85	0.42	0.10	0.15	0.92	0.29	0.66
Thailand	0.23	0.57	0.02	0.00	0.00	0.00	0.00	0.02	0.05	0.02	0.59
Japan	0.13	0.00	0.72	0.57	0.05	0.01	0.64	0.27	0.00	0.02	0.49
Netherlands	0.11	0.15	0.14	0.34	0.69	0.53	0.51	0.60	1.42	0.96	0.48

Source: NISR with raw data from RRA/Customs

Appendix 6.6a. Top twenty imports by country of origin, 2016Q1- 2018Q3 (Value: US\$ Million)

Year and Period	2016Q1	2016Q2	2016Q3	2016Q4	2017Q1	2017Q2	2017Q3	2017Q4	2018Q1	2018Q2	2018Q3
COUNTRY OF ORIGIN	666.43	660.60	644.46	633.55	635.79	660.30	855.75	724.15	695.17	662.55	738.97
China	120.15	107.99	101.19	101.52	117.99	112.19	171.51	112.44	127.74	107.85	151.79
United Arab Emirates	94.87	85.58	86.17	62.88	82.41	72.64	82.28	78.72	73.24	73.36	68.09
Uganda	48.66	49.71	53.68	52.34	48.03	46.40	57.26	58.01	55.57	59.40	65.88
India	63.96	72.77	84.46	94.63	64.44	50.49	81.30	73.18	67.26	68.40	65.09
Kenya	41.67	41.43	41.85	35.25	35.37	40.52	43.94	37.95	37.99	40.29	49.83
Tanzania, United Republic Of	19.65	25.22	24.01	27.16	23.45	24.49	29.14	29.10	26.97	31.86	36.29
Saudi Arabia	4.69	3.67	9.30	13.19	23.41	39.03	28.84	18.01	24.22	18.83	28.33
Switzerland	9.89	10.63	12.12	10.57	4.57	1.99	10.54	9.52	12.12	18.72	27.02
Belgium	15.87	16.55	15.49	11.55	11.40	13.89	18.80	12.40	11.71	12.55	22.76
Japan	16.66	25.60	20.61	20.50	17.50	20.92	26.42	27.63	15.31	14.78	14.71
Indonesia	6.92	5.98	5.80	4.15	2.74	5.96	9.11	7.01	10.46	10.75	14.42
Germany	31.81	22.91	21.52	10.77	21.03	17.57	25.87	14.79	21.63	15.53	14.35
South Africa	17.59	11.35	15.69	12.01	17.19	15.38	27.14	18.83	18.35	18.01	13.26
United States	12.033	16.458	8.971	10.252	11.010	23.451	13.165	14.591	9.141	7.312	12.197
Oman	0.156	0.003	0.783	0.383	0.225	0.331	0.343	0.022	0.379	0.559	9.677
Russian Federation	7.338	8.924	5.373	11.483	6.125	10.847	19.710	18.112	9.634	22.813	9.280
Zambia	8.011	8.839	11.677	11.925	8.702	8.855	15.817	11.857	5.357	8.817	9.264
Italy	5.984	6.347	4.364	11.504	5.562	4.857	12.045	8.093	8.329	8.426	9.208
Turkey	27.330	19.942	9.092	12.963	9.655	14.195	17.277	9.517	8.676	7.792	9.188
Malaysia	3.131	4.717	13.059	13.958	11.618	19.041	14.163	8.267	8.335	9.330	8.705

Source: NISR with raw data from RRA/Customs

Appendix 6.6b. Top twenty imports by country of origin, shares in percentage 2016Q1-2018Q3

Year and Period	2016Q1	2016Q2	2016Q3	2016Q4	2017Q1	2017Q2	2017Q3	2017Q4	2018Q1	2018Q2	2018Q3
COUNTRY OF ORIGIN	100.00	100.00	100.00	100.00	100.00	100.00	100.00	100.00	100.00	100.00	100.00
China	18.03	16.35	15.70	16.02	18.56	16.99	20.04	15.53	18.38	16.28	20.54
United Arab Emirates	14.24	12.95	13.37	9.93	12.96	11.00	9.62	10.87	10.54	11.07	9.21
Uganda	7.30	7.53	8.33	8.26	7.55	7.03	6.69	8.01	7.99	8.96	8.92
India	9.60	11.02	13.11	14.94	10.14	7.65	9.50	10.11	9.67	10.32	8.81
Kenya	6.25	6.27	6.49	5.56	5.56	6.14	5.13	5.24	5.47	6.08	6.74
Tanzania, United Republic Of	2.95	3.82	3.73	4.29	3.69	3.71	3.40	4.02	3.88	4.81	4.91
Saudi Arabia	0.70	0.56	1.44	2.08	3.68	5.91	3.37	2.49	3.48	2.84	3.83
Switzerland	1.48	1.61	1.88	1.67	0.72	0.30	1.23	1.31	1.74	2.82	3.66
Belgium	2.38	2.51	2.40	1.82	1.79	2.10	2.20	1.71	1.68	1.89	3.08
Japan	2.50	3.87	3.20	3.24	2.75	3.17	3.09	3.81	2.20	2.23	1.99
Indonesia	1.04	0.91	0.90	0.66	0.43	0.90	1.06	0.97	1.51	1.62	1.95
Germany	4.77	3.47	3.34	1.70	3.31	2.66	3.02	2.04	3.11	2.34	1.94
South Africa	2.64	1.72	2.43	1.90	2.70	2.33	3.17	2.60	2.64	2.72	1.79
United States	1.81	2.49	1.39	1.62	1.73	3.55	1.54	2.01	1.31	1.10	1.65
Oman	0.02	0.00	0.12	0.06	0.04	0.05	0.04	0.00	0.05	0.08	1.31
Russian Federation	1.10	1.35	0.83	1.81	0.96	1.64	2.30	2.50	1.39	3.44	1.26
Zambia	1.20	1.34	1.81	1.88	1.37	1.34	1.85	1.64	0.77	1.33	1.25
Italy	0.90	0.96	0.68	1.82	0.87	0.74	1.41	1.12	1.20	1.27	1.25
Turkey	4.10	3.02	1.41	2.05	1.52	2.15	2.02	1.31	1.25	1.18	1.24
Malaysia	0.47	0.71	2.03	2.20	1.83	2.88	1.66	1.14	1.20	1.41	1.18

Source: NISR with raw data from RRA/Customs

Appendix 6.7a. Top twenty re-exports partners, 2016Q1-2018Q3 (Value: US\$ Million)

Year and Period	2016Q1	2016Q2	2016Q3	2016Q4	2017Q1	2017Q2	2017Q3	2017Q4	2018Q1	2018Q2	2018Q3
COUNTRY OF DESTINATION	38.94	57.56	49.15	57.93	63.01	74.39	74.34	77.70	84.90	86.48	85.61
Congo, The Democratic Republic Of	34.04	40.71	41.45	43.74	48.35	58.91	55.98	60.25	68.44	67.51	66.64
Burundi	3.04	8.40	4.95	7.04	3.81	4.70	5.13	3.80	2.91	3.34	3.25
Qatar	0.00	0.01	0.00	0.00	0.01	0.01	0.03	1.37	1.63	2.20	2.43
Ethiopia	0.11	1.12	0.46	0.82	1.37	0.76	0.90	0.81	0.44	0.72	1.01
Uganda	0.02	0.11	0.20	0.58	0.46	1.34	0.55	0.63	0.79	0.93	0.74
United Arab Emirates	0.07	0.25	0.19	0.31	0.36	0.33	0.51	2.40	2.19	2.54	0.60
Belgium	0.02	2.30	0.65	1.94	3.24	3.02	3.27	2.51	0.66	0.08	0.44
Sudan	0.02	0.00	0.00	0.00	0.00	0.33	0.00	0.00	0.39	0.21	0.34
South Sudan	0.13	0.00	0.00	0.04	0.04	0.00	0.00	0.00	0.00	0.00	0.33
Kenya	0.75	3.94	0.95	2.60	4.27	2.88	0.28	0.31	0.09	0.30	0.33
Turkey	0.04	0.19	0.05	0.17	0.18	0.13	0.24	0.18	0.28	0.28	0.31
United Kingdom	0.54	0.42	0.03	0.23	0.26	0.10	0.19	0.10	0.17	0.29	0.17
United States	0.00	0.00	0.11	0.06	0.13	0.04	0.01	0.01	0.05	0.10	0.16
Mauritius	0.00	0.02	0.00	0.00	0.00	0.00	0.00	0.00	0.00	0.01	0.12
Germany	0.00	0.00	0.00	0.10	0.00	0.05	0.08	0.08	0.12	0.09	0.10
Tanzania, United Republic Of	0.09	0.00	0.02	0.08	0.12	0.13	0.00	0.00	0.08	0.05	0.07
Hong Kong	0.00	0.03	0.00	0.01	0.03	0.02	0.03	0.02	0.00	0.05	0.05
Switzerland	0.01	0.00	0.00	0.00	0.00	0.00	0.00	0.00	0.00	0.00	0.04
Nigeria	0.00	0.01	0.00	0.00	0.00	0.00	0.00	0.00	0.00	0.00	0.01
China	0.00	0.00	0.00	0.00	0.00	0.00	0.00	0.00	0.01	0.01	0.00

Source: NISR with raw data from RRA/Customs

Appendix 6.7b. Top twenty re-exports partners, shares in percentage 2016Q1-2018Q3

Year and Period	2016Q1	2016Q2	2016Q3	2016Q4	2017Q1	2017Q2	2017Q3	2017Q4	2018Q1	2018Q2	2018Q3
COUNTRY OF DESTINATION	100.00	100.00	100.00	100.00	100.00	100.00	100.00	100.00	100.00	100.00	100.00
Congo, The Democratic Republic Of	87.43	70.72	84.34	75.50	76.73	79.18	75.30	77.55	80.61	78.07	77.84
Burundi	7.80	14.59	10.08	12.15	6.04	6.31	6.90	4.89	3.43	3.86	3.80
Qatar	0.01	0.02	0.00	0.01	0.02	0.01	0.03	1.77	1.92	2.55	2.83
Ethiopia	0.27	1.94	0.94	1.41	2.17	1.02	1.22	1.04	0.52	0.83	1.18
Uganda	0.06	0.19	0.40	1.00	0.72	1.80	0.74	0.81	0.93	1.07	0.86
United Arab Emirates	0.17	0.44	0.38	0.54	0.57	0.44	0.69	3.09	2.58	2.93	0.70
Belgium	0.06	3.99	1.32	3.34	5.14	4.06	4.40	3.23	0.78	0.09	0.51
Sudan	0.06	0.00	0.00	0.00	0.00	0.44	0.00	0.00	0.46	0.24	0.40
South Sudan	0.34	0.00	0.00	0.07	0.06	0.00	0.00	0.00	0.00	0.00	0.39
Kenya	1.93	6.84	1.94	4.48	6.78	3.87	0.37	0.40	0.10	0.35	0.38
Turkey	0.10	0.33	0.10	0.29	0.28	0.18	0.32	0.23	0.33	0.32	0.36
United Kingdom	1.39	0.73	0.05	0.40	0.42	0.13	0.25	0.13	0.20	0.34	0.20
United States	0.00	0.01	0.23	0.10	0.21	0.05	0.02	0.01	0.06	0.12	0.18
Mauritius	0.00	0.03	0.00	0.00	0.00	0.00	0.00	0.00	0.00	0.01	0.14
Germany	0.00	0.00	0.00	0.18	0.00	0.06	0.11	0.10	0.14	0.11	0.11
Tanzania, United Republic Of	0.23	0.00	0.05	0.14	0.19	0.17	0.00	0.00	0.09	0.06	0.08
Hong Kong	0.00	0.06	0.00	0.02	0.05	0.02	0.04	0.02	0.00	0.06	0.06
Switzerland	0.02	0.00	0.00	0.00	0.00	0.00	0.00	0.00	0.00	0.00	0.05
Nigeria	0.00	0.01	0.00	0.00	0.00	0.00	0.00	0.00	0.00	0.00	0.01
China	0.00	0.01	0.00	0.00	0.00	0.00	0.00	0.00	0.01	0.01	0.00

Source: NISR with raw data from RRA/Customs

Appendix 6.8a. Trade with selected Economic Organizations, 2016Q1-2018Q3 (Value: US\$ Million)

Economic Block	Flow	2016Q1	2016Q2	2016Q3	2016Q4	2017Q1	2017Q2	2017Q3	2017Q4	2018Q1	2018Q2	2018Q3
EAC	Export	36.70	33.20	20.47	24.21	28.95	43.56	29.26	36.92	40.76	44.55	21.11
	Import	111.68	118.46	120.84	115.17	107.58	111.84	130.82	126.39	121.48	132.21	153.75
	Re-export	3.90	12.44	6.13	10.34	8.69	9.04	5.95	4.74	3.86	4.62	4.72
CEPGL	Export	12.89	12.96	12.96	11.54	12.71	14.27	16.72	22.23	20.72	16.76	20.62
	Import	3.49	4.94	3.64	2.54	2.86	2.81	2.82	3.60	3.37	3.52	4.22
	Re-export	37.08	49.11	46.41	50.78	52.16	63.60	61.11	64.06	71.34	70.85	69.89
COMESA	Export	46.01	42.17	35.15	34.70	40.24	57.97	55.57	58.22	60.73	60.01	41.35
	Import	114.63	116.66	121.90	114.58	106.82	107.88	132.09	128.99	112.67	120.22	137.77
	Re-export	37.99	54.29	48.02	54.77	58.28	68.94	62.84	65.80	73.05	73.10	72.43
COMMON WEALTH	Export	39.87	40.51	33.58	33.49	33.58	49.23	48.80	54.69	55.69	67.04	46.89
	Import	236.80	243.77	276.65	283.51	246.61	230.78	299.63	272.03	257.87	269.51	268.28
	Re-export	1.41	4.50	1.21	3.51	5.12	4.47	1.02	1.06	1.12	1.66	1.43
ECOWAS	Export	0.01	0.03	0.13	0.06	0.08	0.14	0.73	0.07	0.09	0.09	0.05
	Import	0.40	0.72	0.42	0.56	0.29	1.23	0.74	0.78	0.65	0.49	0.52
	Re-export	0.00	0.01	0.00	0.00	0.02	0.01	0.00	0.00	0.01	0.27	0.01
SADC	Export	11.20	11.74	13.56	11.39	12.22	13.67	17.11	22.80	20.76	17.41	21.13
	Import	53.55	53.50	58.40	56.22	55.76	53.34	78.86	73.76	56.63	65.31	64.99
	Re-export	34.14	40.76	41.48	43.85	48.49	59.09	55.98	60.27	68.51	67.65	66.83
EU	Export	6.18	5.10	13.27	8.66	6.78	11.58	17.40	17.01	11.77	17.80	16.62
	Import	81.65	93.99	73.35	64.69	72.32	74.57	105.47	101.96	105.02	70.52	81.35
	Re-export	0.57	2.72	0.70	2.38	3.71	3.18	3.54	2.69	0.95	0.46	0.70

Source: NISR with raw data from RRA/Customs

Appendix 6.8b. Trade with selected Economic Organizations, shares in percentage 2016Q1-2018Q3

Economic Block	Flow	2016Q1	2016Q2	2016Q3	2016Q4	2017Q1	2017Q2	2017Q3	2017Q4	2018Q1	2018Q2	2018Q3
EAC	Export	39.85	35.58	18.21	22.11	31.46	37.09	19.55	23.43	29.51	27.16	11.75
	Import	16.76	17.93	18.75	18.18	16.92	16.94	15.29	17.45	17.47	19.96	20.81
	Re-export	10.03	21.61	12.47	17.84	13.80	12.16	8.01	6.10	4.54	5.34	5.51
CEPGL	Export	13.99	13.90	11.53	10.54	13.81	12.15	11.17	14.10	15.00	10.22	11.47
	Import	0.52	0.75	0.56	0.40	0.45	0.43	0.33	0.50	0.49	0.53	0.57
	Re-export	95.23	85.31	94.42	87.65	82.78	85.50	82.20	82.44	84.03	81.93	81.64
COMESA	Export	49.96	45.20	31.27	31.69	43.73	49.36	37.14	36.94	43.96	36.58	23.01
	Import	17.20	17.66	18.92	18.09	16.80	16.34	15.44	17.81	16.21	18.14	18.64
	Re-export	97.57	94.32	97.71	94.54	92.49	92.66	84.52	84.69	86.04	84.53	84.60
COMMON WEALTH	Export	43.30	43.43	29.87	30.59	36.49	41.92	32.61	34.70	40.31	40.87	26.09
	Import	35.53	36.90	42.93	44.75	38.79	34.95	35.01	37.57	37.09	40.68	36.31
	Re-export	3.63	7.82	2.46	6.06	8.12	6.01	1.37	1.36	1.32	1.92	1.67
ECOWAS	Export	0.01	0.03	0.11	0.06	0.09	0.12	0.49	0.04	0.06	0.06	0.03
	Import	0.06	0.11	0.07	0.09	0.05	0.19	0.09	0.11	0.09	0.07	0.07
	Re-export	0.00	0.01	0.00	0.00	0.04	0.01	0.00	0.00	0.02	0.32	0.01
SADC	Export	12.16	12.59	12.06	10.40	13.28	11.64	11.43	14.47	15.03	10.62	11.76
	Import	8.04	8.10	9.06	8.87	8.77	8.08	9.22	10.19	8.15	9.86	8.79
	Re-export	87.67	70.81	84.39	75.68	76.97	79.42	75.30	77.57	80.70	78.23	78.06
EU	Export	6.71	5.47	11.80	7.91	7.36	9.86	11.63	10.79	8.52	10.85	9.25
	Import	12.25	14.23	11.38	10.21	11.38	11.29	12.33	14.08	15.11	10.64	11.01
	Re-export	1.46	4.72	1.43	4.10	5.89	4.27	4.77	3.46	1.12	0.54	0.82

Source: NISR with raw data from RRA/Customs

**Appendix 6.9. Trade by Mode of Transport, Values in US\$ million, shares in percentage
2016Q1-2018Q3**

Imports

Via	2016Q1	2016Q2	2016Q3	2016Q4	2017Q1	2017Q2	2017Q3	2017Q4	2018Q1	2018Q2	2018Q3
Air	66.86	88.46	66.85	61.72	57.61	72.74	74.88	84.48	83.03	75.22	58.31
Land	600.21	573.5	577.65	571.83	578.27	587.98	781.83	641.26	612.1	587.33	680.66
Total	666.43	660.6	644.46	633.55	635.79	660.3	855.75	724.15	695.17	662.55	738.97

Share in %

Via	2016Q1	2016Q2	2016Q3	2016Q4	2017Q1	2017Q2	2017Q3	2017Q4	2018Q1	2018Q2	2018Q3
Air	10%	13%	10%	10%	9%	11%	9%	12%	12%	11%	8%
Land	90%	87%	90%	90%	91%	89%	91%	88%	88%	89%	92%

Domestic Exports

Via	2016Q1	2016Q2	2016Q3	2016Q4	2017Q1	2017Q2	2017Q3	2017Q4	2018Q1	2018Q2	2018Q3
Air	15.64	17.59	32.6	28.47	18.52	25.26	29.14	29.57	31.9	51.66	72.34
Land	76.45	75.7	79.81	81.02	73.5	92.18	120.51	128.06	106.25	112.38	107.39
Total	92.1	93.29	112.41	109.5	92.02	117.44	149.65	157.63	138.15	164.03	179.73

Share in %

Via	2016Q1	2016Q2	2016Q3	2016Q4	2017Q1	2017Q2	2017Q3	2017Q4	2018Q1	2018Q2	2018Q3
Air	17%	19%	29%	26%	20%	22%	19%	19%	23%	31%	40%
Land	83%	81%	71%	74%	80%	78%	81%	81%	77%	69%	60%

Re-exports

Via	2016Q1	2016Q2	2016Q3	2016Q4	2017Q1	2017Q2	2017Q3	2017Q4	2018Q1	2018Q2	2018Q3
Air	1.53	8.28	2.51	6.20	10.00	8.78	12.57	10.55	9.89	12.17	13.80
Land	37.41	49.29	46.64	51.73	53.01	65.61	61.77	67.15	75.02	74.31	71.81
Total	38.94	57.56	49.15	57.93	63.01	74.39	74.34	77.7	84.9	86.48	85.61

Share in %

Via	2016Q1	2016Q2	2016Q3	2016Q4	2017Q1	2017Q2	2017Q3	2017Q4	2018Q1	2018Q2	2018Q3
Air	4%	14%	5%	11%	16%	12%	17%	14%	12%	14%	16%
Land	96%	86%	95%	89%	84%	88%	83%	86%	88%	86%	84%