



REPUBLIC OF RWANDA



# CONSUMER PRICE INDEX (CPI)

## JUNE 2019

10 July 2019

## 1. Summary

This is the monthly publication of the Consumer Price Index (CPI) for the month of June 2019. Urban CPI will be the focus of the publication as it is the headline index for monetary policy purposes.

### 1.1. Urban Index

Urban CPI increased by 0.9 percent on annual basis and was stable on monthly basis. The annual average rate between June 2019 and June 2018 was 0.8 percent.

### 1.2. Rural Index

Rural CPI increased by 0.9 percent on annual basis and decreased by 0.1 percent on monthly basis.

### 1.3. Overall Rwanda Index

Rwanda CPI increased by 0.9 percent on annual basis and decreased by 0.1 percent on monthly basis.

TABLE 1: Consumer Price Index, Urban and Rural													
percentage change on the same period 12 months earlier:													
2018								2019					
	Jun.	Jul.	Aug.	Sep.	Oct.	Nov.	Dec.	Jan.	Feb.	Mar.	Apr.	May.	Jun.
Urban CPI Annual change	2.9	2.0	2.1	1.2	-0.6	0.1	1.1	1.0	0.8	1.1	0.2	0.0	0.9
Rural CPI Annual change	0.4	-0.3	-0.6	-2.7	-5.4	-1.8	-0.6	-0.4	-1.3	0.4	-0.7	-0.7	0.9
Rwanda CPI Annual change	1.4	0.6	0.6	-1.1	-3.4	-1.0	0.1	0.2	-0.4	0.7	-0.3	-0.4	0.9
Urban CPI Monthly change	-0.9	-1.0	0.4	0.2	-0.6	-0.5	-0.2	0.0	0.3	1.1	0.3	0.9	0.0
Rural CPI Monthly change	-1.7	-0.6	0.6	-0.3	-1.4	-0.6	-1.3	0.0	-0.4	3.1	1.2	0.8	-0.1
Rwanda CPI Monthly change	-1.4	-0.8	0.5	-0.1	-1.0	-0.5	-0.8	0.0	-0.1	2.2	0.9	0.8	-0.1

Source: NISR

## 2. Urban Consumer Price Index

The urban CPI is calculated based on approximately 1,622 products in twelve urban centres of Rwanda. The table below shows monthly and annual changes in June 2019 for the main categories of the urban index.

Code	Categories	Weights	Percentage change in Jun. 2019	
			on May. 2019	on Jun. 2018
	<b>GENERAL INDEX</b>	<b>100%</b>	<b>0.0%</b>	<b>0.9%</b>
01	Food and non-alcoholic beverages	27%	-0.4%	-1.6%
01.1.1	Bread and cereals	5%	0.6%	2.9%
01.1.2	Meat	2%	1.1%	14.8%
01.1.4	Milk cheese and eggs	1%	-0.3%	5.0%
01.1.7	Vegetables	9%	-2.5%	-10.8%
01.2	Non-alcoholic beverages	1%	-0.4%	3.8%
02	Alcoholic beverages tobacco and narcotics	5%	0.2%	5.3%
03	Clothing and footwear	5%	1.4%	6.0%
04	Housing water, electricity, gas and other fuels	21%	-0.2%	0.0%
05	Furnishings household equipment and routine household m	4%	0.6%	3.6%
06	Health	1%	-0.1%	0.2%
07	Transport	12%	0.2%	3.2%
08	Communication	3%	0.0%	0.0%
09	Recreation and culture	3%	0.5%	0.3%
10	Education	3%	0.0%	1.5%
11	Restaurants and hotels	9%	-0.3%	2.0%
12	Miscellaneous goods and services	6%	0.0%	0.7%

Source: NISR

Urban CPI increased by 0.9 percent in June compared to the same month of 2018. 'Alcoholic beverages, tobacco and narcotics increased by 5.3 percent, 'Clothing and footwear increased by 6.0 percent and Transport increased by 3.2 percent.

The CPI for June was stable compared to May 2019.

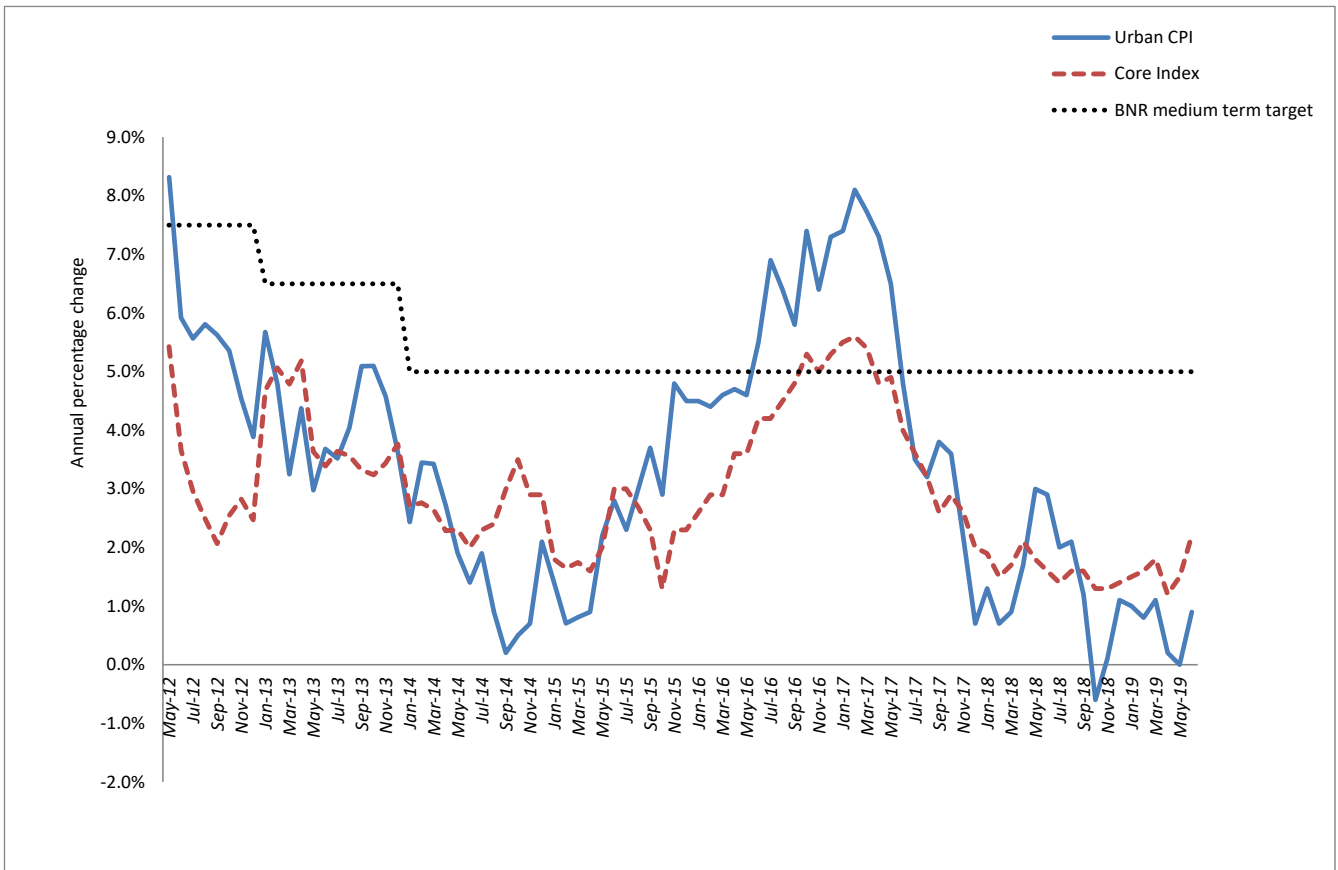
The underlying inflation rate (excluding fresh food and energy) increased by 0.5 percent compared to May 2019 and increased by 2.2 percent when compared to June 2018 (See Table 4).

The annual average inflation rate between June 2019 and June 2018 is 0.8 percent. The annual average underlying inflation rate is 1.5 percent.

	2018				2019								
	Jun.	Jul.	Aug.	Sep.	Oct.	Nov.	Dec.	Jan.	Feb.	Mar.	Apr.	May.	Jun.
General index	2.3	2.2	2.1	1.9	1.5	1.3	1.4	1.3	1.3	1.4	1.2	1.0	0.8
Core / Underlying index	2.3	2.1	2.0	1.9	1.7	1.6	1.6	1.6	1.6	1.6	1.5	1.5	1.5

Source: NISR

**Figure 1: Annual changes in urban CPI (May 2012 – June 2019)**



### 3. Other selected urban indices

This section highlights five selected urban indices: - the local goods index, the imported goods index, the fresh products index, the energy index and the core index.

On annual basis, the local goods index was stable, the imported goods index increased by 3.7 percent, the fresh products index decreased by 3.1 percent, the energy index decreased by 2.9 percent and the core index or the general index excluding fresh products and energy increased by 2.2 percent.

On monthly basis, the local goods index decreased by 0.3 percent; the imported goods index increased by 0.8 percent, the fresh products decreased by 2.2 percent, the energy index decreased by 0.6 percent and the core index increased by 0.5 percent.

<b>TABLE 4: Consumer Price Index (Urban only), Core &amp; other</b>			
<b>Categories</b>	<b>Weights</b>	<b>Percentage change in Jun. 2019</b>	
		<b>on May. 2019</b>	<b>on Jun. 2018</b>
<b>GENERAL INDEX</b>	<b>100%</b>	<b>0.0%</b>	<b>0.9%</b>
<b>Local Goods Index</b>	<b>77%</b>	<b>-0.3%</b>	<b>0.0%</b>
Food and non-alcoholic beverages	21%	-0.9%	-3.1%
Housing, water, electricity, gas and other fuels	21%	-0.2%	-0.1%
Transport	6%	0.2%	3.1%
<b>Imported Goods Index</b>	<b>23%</b>	<b>0.8%</b>	<b>3.7%</b>
Food and non-alcoholic beverages	7%	1.4%	3.4%
Furnishing, household equipment	2%	1.0%	3.4%
Transport	6%	0.2%	3.4%
<b>Fresh Products index<sup>1</sup></b>	<b>16%</b>	<b>-2.2%</b>	<b>-3.1%</b>
<b>Energy index</b>	<b>7%</b>	<b>-0.6%</b>	<b>-2.9%</b>
<b>General Index excluding fresh Products and</b>	<b>77%</b>	<b>0.5%</b>	<b>2.2%</b>
<i>Source: NISR</i>			
(1) Fresh products are food products which have seasonal fluctuations			
(2) Proxy for underlying inflation			

#### 4. Methodological notice

The Consumer Price Index (CPI) is a measure of the average change over time of goods and services purchased by households. The CPI uses a Modified Laspeyres formula to calculate the index. The reference population for the CPI consists of all households, urban and rural in Rwanda.

The household basket includes 1,622 products sold in many places spread all over the country. A variety of places of observation are selected: shops, markets, hospitals, schools etc. More than 29,482 prices in urban areas and 10,744 in rural areas are collected every month.

Weights used for the index are from the Household Living Conditions Survey (EICV4) results conducted in 2013-2014 with a sample of 14,419 households.

Each month, NISR publishes the All Rwanda index, All Urban index and All Rural index. The Urban CPI is considered as the headline index for monetary policy purposes. In addition, select detailed item indices are published for items judged to be important or experiencing extreme price movement.

## 4.1 Main terms used in Rwandan CPI

**General index:** The highest level of aggregation of a CPI which covers all the items within the scope of the CPI

**Core (underlying) inflation:** A type of CPI which shows the underlying trend in inflation by excluding those movements which arise from transient factors such as seasonality or other short term price volatility

**Index reference period (Feb 2014=100):** The period with which all other periods are compared (the period for which the value of the CPI is set at 100).

**Monthly inflation:** Compare the current index number compared with the index number of the previous month

**Annual inflation:** Compare the index number for a particular month with the index number for the same month of the previous year

**Annual average inflation:** Compare the average of all the monthly indices in a particular year with the corresponding average for the previous year. Any twelve-month average (eg. from July 2016 to June 2017) may be compared with the twelve-month average (also from July 2015 to June 2016) in order to calculate June 2017 inflation rate.

## 4. 2. How to Interpret CPI

Movements of the indices from one month to another usually are expressed as percentage changes rather than changes in index points. The level of the index (relative to its base period) affects index point changes, but it does not affect percent changes. The following example illustrates how to calculate percentage changes:

### *Index point change*

CPI	178
Less CPI for previous period	<u>176</u>
Equals index point change	2

### *Percent change*

Index point difference	2
Divided by the previous index	176
Equals	0.011
Results multiplied by 100	0.011 x 100
Equals percent change	1.1

## 6. Annexes: Reference Tables

Annex 1: Consumer Price Index, Urban									
Code	Categories	Weights	Index (Feb 2014=100)			Percentage change in Jun. 2019		Contributions <sup>1</sup> :	
			Jun-18	May-19	Jun-19	on May. 2019	on Jun. 2018	1 month	12 months
	<b>GENERAL INDEX</b>	100%	117.0	118.1	<b>118.0</b>	<b>0.0%</b>	<b>0.9%</b>	<b>0.0%</b>	<b>0.9%</b>
01	Food and non-alcoholic beverages	27%	127.8	126.2	<b>125.8</b>	-0.4%	-1.6%	-0.1	-0.5
01.1.1	Bread and cereals	5%	119.7	122.4	<b>123.2</b>	0.6%	2.9%	0.0	0.2
01.1.2	Meat	2%	112.5	127.8	<b>129.2</b>	1.1%	14.8%	0.0	0.3
01.1.4	Milk cheese and eggs	1%	116.9	123.0	<b>122.6</b>	-0.3%	5.0%	0.0	0.1
01.1.7	Vegetables	9%	145.8	133.4	<b>130.1</b>	-2.5%	-10.8%	-0.2	-1.2
01.2	Non-alcoholic beverages	1%	121.5	126.6	<b>126.1</b>	-0.4%	3.8%	0.0	0.1
02	Alcoholic beverages tobacco and narcotics	5%	126.7	133.2	<b>133.5</b>	0.2%	5.3%	0.0	0.3
03	Clothing and footwear	5%	114.7	119.9	<b>121.6</b>	1.4%	6.0%	0.1	0.3
04	Housing water, electricity, gas and other fuels	21%	114.1	114.3	<b>114.0</b>	-0.2%	0.0%	0.0	0.0
05	Furnishings household equipment and routine household maintenance	4%	111.5	114.9	<b>115.5</b>	0.6%	3.6%	0.0	0.1
06	Health	1%	107.3	107.6	<b>107.5</b>	-0.1%	0.2%	0.0	0.0
07	Transport	12%	118.4	122.0	<b>122.2</b>	0.2%	3.2%	0.0	0.4
08	Communication	3%	105.8	105.8	<b>105.8</b>	0.0%	0.0%	0.0	0.0
09	Recreation and culture	3%	116.4	116.2	<b>116.8</b>	0.5%	0.3%	0.0	0.0
10	Education	3%	103.4	104.9	<b>104.9</b>	0.0%	1.5%	0.0	0.0
11	Restaurants and hotels	9%	103.6	106.0	<b>105.7</b>	-0.3%	2.0%	0.0	0.2
12	Miscellaneous goods and services	6%	111.5	112.2	<b>112.3</b>	0.0%	0.7%	0.0	0.0

Source: NISR  
(1) "Contributions" take into account both the growth rate and the relative weight of each category to explain the percentage change observed.

**Annex 2: Consumer Price Index, Rural**

Code	Categories	Weights	Index (Feb 2014=100)			Percentage change in Jun. 2019		Contributions <sup>1</sup> :	
			Jun-18	May-19	Jun-19	on May. 2019	on Jun. 2018	1 month	12 months
	<b>GENERAL INDEX</b>	100%	124.3	125.6	<b>125.4</b>	<b>-0.1%</b>	<b>0.9%</b>	<b>-0.1%</b>	<b>0.9%</b>
01	Food and non-alcoholic beverages	48%	127.5	126.7	<b>126.4</b>	-0.3%	-0.9%	-0.1	-0.4
01.1.1	Bread and cereals	8%	121.4	130.3	<b>135.9</b>	4.3%	12.0%	0.3	0.9
01.1.2	Meat	2%	118.8	133.2	<b>137.3</b>	3.1%	15.5%	0.1	0.2
01.1.4	Milk cheese and eggs	1%	113.8	123.5	<b>124.7</b>	1.0%	9.6%	0.0	0.1
01.1.7	Vegetables	26%	132.8	128.4	<b>125.9</b>	-2.0%	-5.2%	-0.5	-1.4
01.2	Non-alcoholic beverages	1%	113.5	116.3	<b>116.3</b>	0.0%	2.4%	0.0	0.0
02	Alcoholic beverages tobacco and narcotics	8%	117.6	118.0	<b>117.8</b>	-0.2%	0.1%	0.0	0.0
03	Clothing and footwear	5%	112.9	120.5	<b>120.8</b>	0.2%	7.0%	0.0	0.3
04	Housing water, electricity, gas and other fuels	16%	126.0	130.0	<b>130.1</b>	0.1%	3.2%	0.0	0.5
05	Furnishings household equipment and routine household maintenance	3%	108.7	111.7	<b>112.2</b>	0.5%	3.3%	0.0	0.1
06	Health	1%	105.5	105.9	<b>105.8</b>	-0.1%	0.3%	0.0	0.0
07	Transport	4%	111.1	111.6	<b>111.8</b>	0.1%	0.6%	0.0	0.0
08	Communication	2%	100.0	100.0	<b>100.0</b>	0.0%	0.0%	0.0	0.0
09	Recreation and culture	1%	107.7	120.7	<b>121.1</b>	0.3%	12.5%	0.0	0.2
10	Education	1%	170.6	175.2	<b>175.2</b>	0.0%	2.7%	0.0	0.1
11	Restaurants and hotels	5%	114.9	115.4	<b>115.7</b>	0.3%	0.8%	0.0	0.0
12	Miscellaneous goods and services	4%	105.6	107.8	<b>107.1</b>	-0.7%	1.5%	0.0	0.1

Source: NISR

(1) "Contributions" take into account both the growth rate and the relative weight of each category to explain the percentage change observed.



**Annex 3: Consumer Price Index, All Rwanda**

Code	Categories	Weights	Index (Feb 2014=100)			Percentage change in Jun. 2019		Contributions <sup>1</sup> :	
			Jun-18	May-19	Jun-19	on May. 2019	on Jun. 2018	1 month	12 months
00	<b>GENERAL INDEX</b>	100%	122.0	123.2	<b>123.1</b>	<b>-0.1%</b>	<b>0.9%</b>	<b>-0.1%</b>	<b>0.9%</b>
01	Food and non-alcoholic beverages	39%	128.6	127.6	<b>127.2</b>	-0.3%	-1.1%	-0.1	-0.5
01.1.1	Bread and cereals	7%	122.1	128.8	<b>132.7</b>	3.0%	8.7%	0.2	0.6
01.1.2	Meat	2%	116.1	131.0	<b>133.7</b>	2.1%	15.2%	0.0	0.3
01.1.4	Milk cheese and eggs	1%	115.1	122.9	<b>123.3</b>	0.3%	7.2%	0.0	0.1
01.1.7	Vegetables	18%	135.8	129.7	<b>127.0</b>	-2.1%	-6.5%	-0.4	-1.3
01.2	Non-alcoholic beverages	1%	117.1	121.0	<b>120.8</b>	-0.2%	3.1%	0.0	0.0
02	Alcoholic beverages tobacco and narcotics	7%	120.2	122.4	<b>122.4</b>	-0.1%	1.8%	0.0	0.1
03	Clothing and footwear	5%	113.6	120.1	<b>121.0</b>	0.8%	6.6%	0.0	0.3
04	Housing water, electricity, gas and other fuels	18%	119.3	121.4	<b>121.3</b>	-0.1%	1.7%	0.0	0.3
05	Furnishings household equipment and routine household maintenance	3%	109.8	113.0	<b>113.6</b>	0.5%	3.5%	0.0	0.1
06	Health	1%	106.3	106.7	<b>106.6</b>	-0.1%	0.3%	0.0	0.0
07	Transport	8%	115.7	118.3	<b>118.5</b>	0.2%	2.5%	0.0	0.2
08	Communication	2%	102.5	102.5	<b>102.5</b>	0.0%	0.0%	0.0	0.0
09	Recreation and culture	2%	112.7	117.8	<b>118.3</b>	0.4%	4.9%	0.0	0.1
10	Education	2%	133.3	136.1	<b>136.1</b>	0.0%	2.1%	0.0	0.0
11	Restaurants and hotels	6%	109.0	110.6	<b>110.6</b>	0.0%	1.5%	0.0	0.1
12	Miscellaneous goods and services	5%	108.4	109.8	<b>109.5</b>	-0.3%	1.1%	0.0	0.0

Source: NISR

(1) "Contributions" take into account both the growth rate and the relative weight of each category to explain the percentage change observed.

**Contacts:**

National Institute of Statistics of Rwanda (NISR),  
P.O. BOX 6139 Kigali,  
Tel.: (250) 571035 Fax: (250) 570705.  
Web site: [www.statistics.gov.rw](http://www.statistics.gov.rw) /CPI Indexes

Publication Directors:

MURANGWA Yusuf, Director General, NISR;  
[yusuf.murangwa@statistics.gov.rw](mailto:yusuf.murangwa@statistics.gov.rw),

MURENZI Ivan, Deputy Director General, NISR;  
[ivan.murenzi@statistics.gov.rw](mailto:ivan.murenzi@statistics.gov.rw),

MWIZERWA J. Claude, Director of Economic Statistics Department, NISR;  
[claudemwizerwa@statistics.gov.rw](mailto:claudemwizerwa@statistics.gov.rw),

MUTETIJABIRO Lucie, Price Statistics Research Statistician Team Leader,  
NISR; [lucie.mutetijabiro@statistics.gov.rw](mailto:lucie.mutetijabiro@statistics.gov.rw).