



REPUBLIC OF RWANDA



AUGUST 2019 INDEX OF INDUSTRIAL PRODUCTION (IIP)

*This is the monthly Index of Industrial Production (IIP).
Series has been developed by the National Institute of
Statistics of Rwanda (NISR) to provide more timely
estimates of the broad trends of industrial output.*

August 2019

Index of
Industrial
Production
(IIP)

October 2019

NATIONAL INSTITUTE OF STATISTICS OF RWANDA

Monthly Index of Industrial Production – formal activity August 2019

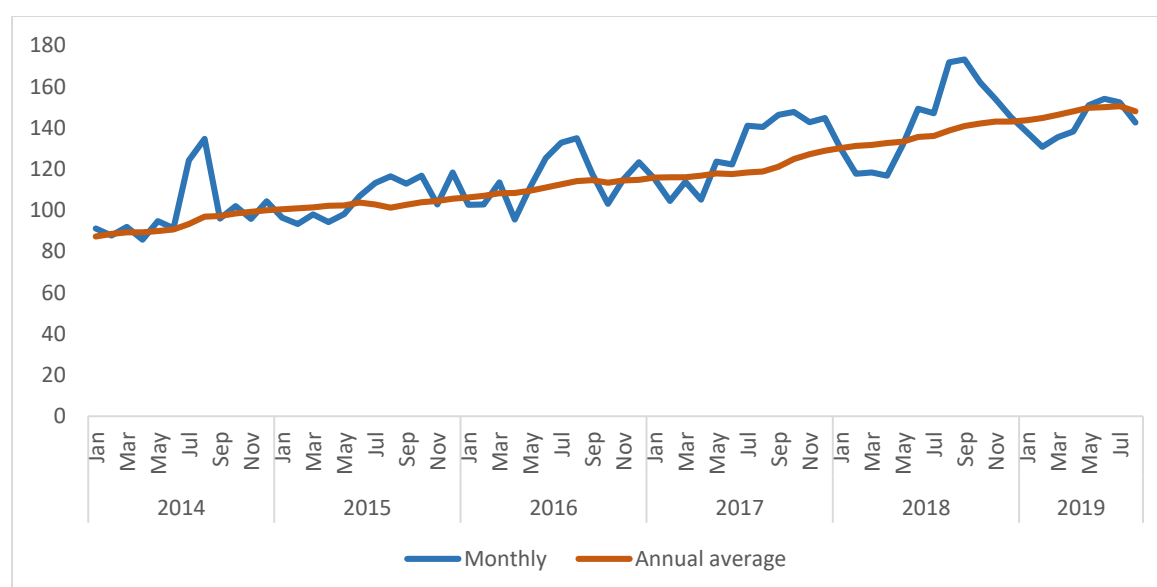
1. Summary

In August 2019, the Index of Industrial Production (IIP) shows that, industrial output (formal sector) decreased by 17.0 percent compared to August 2018, against an increase of 6.8 percent on annual average basis.

Activities in industry changed as follows:

- Mining and quarrying decreased by 51.0 percent;
- Manufacturing increased by 6.7 percent;
- Electricity grew by 5.8 percent; and
- Water and waste management grew by 6.3 percent

Chart 1: Index of Industrial Production (formal activity) constant 2014 prices

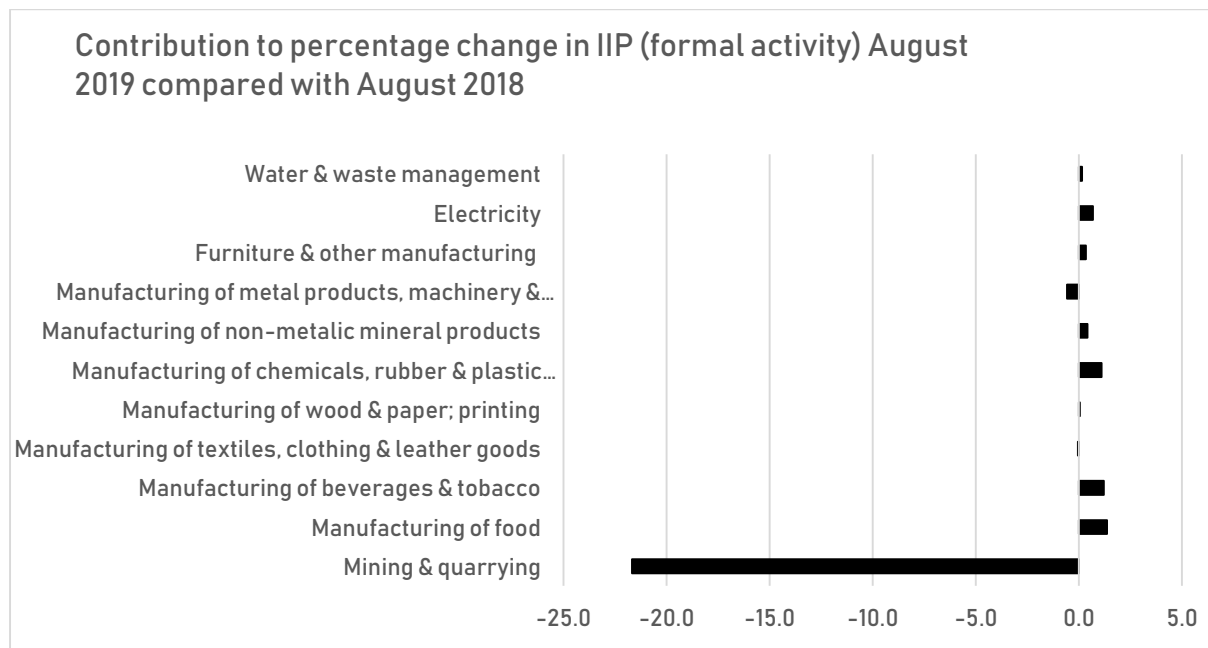


Source: NISR/ Index of Industrial Production

2. Details

The increase in manufacturing is due mainly to an increase of 10.1 percent in manufacturing of beverages and tobacco; 10.2 percent increase in manufacturing of food and 20.5 percent increase in manufacturing of chemicals, rubber & plastic products.

Chart 2: Contribution to percentage change



Source: NISR/ Index of Industrial Production

Table 1: Index of Industrial Production, formal activity, 2014=100, monthly

	Mining & quarrying	Manufacturing of:									Electricity	Water & waste management	General Index
		Food	Beverages & tobacco	Textiles, clothing & leather goods	Wood & paper; printing	Chemicals, rubber & plastic products	Non-metallic mineral products	Metal products, machinery & equipment	Furniture & other manufacturing	Manufacturing Total			
Jan 2016	90.0	112.3	99.1	88.3	103.6	103.5	139.7	135.6	105.0	108.9	122.2	102.8	102.6
Feb 2016	90.9	114.9	103.3	80.2	95.9	105.2	137.1	149.4	109.8	112.4	111.6	97.5	102.8
Mar 2016	97.6	127.4	110.4	178.5	96.8	142.9	162.0	166.5	100.6	125.7	123.4	112.1	113.6
Apr 2016	78.3	95.5	92.8	89.6	113.9	110.7	155.3	139.8	102.8	102.9	120.7	106.9	95.5
May 2016	93.8	124.7	111.1	101.3	93.1	124.2	180.7	154.7	116.9	121.9	127.3	110.5	111.2
Jun 2016	119.2	116.7	117.8	93.8	95.9	151.5	175.8	267.1	123.1	135.8	120.2	113.0	125.4
Jul 2016	135.2	120.6	128.3	75.3	303.5	130.4	171.5	162.4	106.6	133.7	120.5	118.6	132.9
Aug 2016	132.2	141.1	134.4	84.2	100.4	156.2	155.7	192.9	124.2	140.9	127.4	119.4	135.0
Sep 2016	110.5	137.0	98.0	51.0	104.5	155.7	165.1	173.4	103.1	126.8	120.2	111.4	117.8
Oct 2016	83.9	115.5	91.9	80.5	146.0	133.2	190.1	139.5	83.6	114.5	126.8	113.8	103.1
Nov 2016	114.3	112.4	81.3	122.9	113.9	149.8	181.6	187.6	88.6	114.9	124.2	107.4	115.0
Dec 2016	113.7	119.2	121.3	291.0	125.8	125.9	200.0	161.2	123.5	129.5	128.5	114.3	123.4
Jan 2017	103.0	107.6	112.5	135.9	145.5	155.2	181.1	164.9	112.6	122.7	125.5	113.4	115.4
Feb 2017	99.6	94.4	93.6	70.8	108.2	131.9	155.3	159.7	86.7	107.3	116.8	101.4	104.5
Mar 2017	96.8	115.5	111.7	172.8	137.7	149.3	174.6	145.3	116.3	125.0	132.6	110.0	113.8
Apr 2017	91.6	116.8	93.3	62.7	115.9	134.5	171.5	118.2	99.1	114.0	127.2	108.6	105.2
May 2017	106.5	131.5	91.6	746.2	104.4	167.1	190.7	165.4	130.2	131.9	135.5	115.3	123.7
Jun 2017	102.9	123.1	100.6	228.1	89.7	198.1	192.5	296.5	110.8	141.8	128.5	119.4	122.2
Jul 2017	148.8	127.8	108.5	225.5	115.7	184.1	179.7	188.6	152.3	134.8	136.1	121.7	141.0
Aug 2017	145.5	127.1	116.0	206.4	99.3	177.7	218.8	183.0	121.2	136.4	139.6	119.8	140.5
Sep 2017	179.2	130.5	89.7	70.2	92.6	139.6	229.4	156.9	110.5	123.4	134.7	113.5	146.4
Oct 2017	173.0	148.6	87.6	166.9	100.2	147.5	206.7	145.9	155.1	130.2	140.1	109.6	147.8
Nov 2017	156.9	151.8	80.1	249.7	173.0	179.8	216.3	149.3	133.0	134.6	134.6	112.7	142.8
Dec 2017	140.3	166.9	115.0	359.9	131.1	178.3	227.1	148.7	151.6	151.3	138.2	117.8	144.7
Jan 2018	112.0	161.0	102.4	291.9	155.5	180.3	203.3	156.0	140.8	144.8	139.6	117.8	130.0
Feb 2018	92.8	157.9	100.7	324.0	130.6	160.2	173.9	144.3	134.9	137.9	131.7	103.4	117.7
Mar 2018	80.1	162.9	110.0	222.2	116.8	186.4	204.6	189.4	112.4	148.8	144.9	112.9	118.3
Apr 2018	89.8	162.3	99.5	416.8	121.7	164.6	72.1	200.7	109.3	139.8	133.1	106.1	116.8
May 2018	94.8	171.9	112.2	575.6	128.7	224.6	176.2	235.5	111.7	159.3	148.5	114.5	131.7
Jun 2018	137.9	146.0	118.3	300.7	129.1	183.8	257.1	377.2	118.6	167.4	146.0	117.5	149.4
Jul 2018	125.7	160.0	136.3	290.2	113.4	196.2	271.1	248.8	137.7	164.6	152.8	128.6	147.0
Aug 2018	177.8	173.9	135.9	226.9	135.9	225.7	248.4	287.1	133.5	176.9	153.7	126.4	171.9
Sep 2018	203.2	154.5	114.9	341.7	147.1	173.0	274.6	233.3	110.7	157.1	148.1	123.6	173.2
Oct 2018	175.2	154.1	108.5	402.1	122.9	191.0	247.7	240.4	112.6	156.8	154.3	124.7	162.0
Nov 2018	155.7	166.4	101.6	434.2	138.7	217.0	256.1	195.5	125.4	158.6	145.4	121.1	153.9
Dec 2018	128.3	142.0	137.3	656.4	122.9	210.4	224.7	188.3	103.2	158.7	148.0	125.4	145.1
Jan 2019	116.1	150.4	127.8	450.0	167.6	220.8	176.2	166.4	108.3	155.4	152.7	124.8	138.1
Feb 2019	107.9	141.6	120.2	492.8	188.9	195.6	180.9	164.2	133.4	150.8	141.2	114.4	130.9
Mar 2019	95.6	159.6	106.3	716.2	237.2	217.4	300.7	197.6	136.7	170.2	154.0	123.7	135.5
Apr 2019	92.9	183.7	129.0	642.3	217.1	256.3	205.9	168.0	152.7	177.1	150.3	120.5	138.2
May 2019	104.0	194.0	130.7	672.6	218.6	298.8	242.3	229.8	163.3	196.4	160.8	127.5	151.1
Jun 2019	108.8	167.3	147.1	700.8	181.4	233.9	258.1	422.5	159.1	217.1	152.5	125.3	154.1
Jul 2019	102.7	182.5	167.2	398.3	209.1	258.2	308.8	208.0	194.0	196.4	161.4	135.7	152.4
Aug 2019	87.2	191.6	149.6	217.2	140.0	271.9	278.7	255.4	159.7	188.8	162.6	134.3	142.7

Source: NISR/ Index of Industrial Production

Table 2: Index of Industrial Production, formal activity, 2014=100, percentage change on same month in previous year

	Manufacturing of:											Electricity	Water & waste management	General Index
	Mining & quarrying	Food	Beverages & tobacco	Textiles, clothing & leather goods	Wood & paper: printing	Chemicals, rubber & plastic products	Non-metallic mineral products	Metal products, machinery & equipment	Furniture & other manufacturing	Manufacturing Total				
Jan 2017	14.5%	-4.2%	13.6%	53.9%	40.4%	50.0%	29.7%	21.6%	7.2%	12.6%	2.7%	10.3%	12.4%	
Feb 2017	9.6%	-17.9%	-9.3%	-11.7%	12.8%	25.3%	13.3%	6.9%	-21.0%	-4.6%	4.6%	4.0%	1.6%	
Mar 2017	-0.9%	-9.4%	1.2%	-3.2%	42.3%	4.5%	7.8%	-12.8%	15.6%	-0.5%	7.5%	-1.9%	0.2%	
Apr 2017	17.1%	22.3%	0.5%	-30.1%	1.7%	21.4%	10.4%	-15.5%	-3.6%	10.7%	5.4%	1.6%	10.1%	
May 2017	13.6%	5.4%	-17.5%	636.8%	12.1%	34.5%	5.5%	6.9%	11.4%	8.2%	6.4%	4.3%	11.2%	
Jun 2017	-13.7%	5.5%	-14.6%	143.2%	-6.4%	30.7%	9.5%	11.0%	-10.0%	4.4%	7.0%	5.6%	-2.5%	
Jul 2017	10.1%	6.0%	-15.4%	199.3%	-61.9%	41.2%	4.8%	16.1%	42.8%	0.8%	12.9%	2.6%	6.1%	
Aug 2017	10.1%	-9.9%	-13.7%	145.2%	-1.1%	13.8%	40.6%	-5.1%	-2.4%	-3.2%	9.6%	0.4%	4.0%	
Sep 2017	62.1%	-4.8%	-8.4%	37.7%	-11.4%	-10.4%	39.0%	-9.5%	7.2%	-2.7%	12.1%	1.9%	24.3%	
Oct 2017	106.1%	28.6%	-4.6%	107.4%	-31.3%	10.7%	8.7%	4.6%	85.6%	13.7%	10.5%	-3.7%	43.3%	
Nov 2017	37.3%	35.0%	-1.6%	103.2%	51.9%	20.0%	19.1%	-20.4%	50.2%	17.1%	8.4%	4.9%	24.2%	
Dec 2017	23.3%	40.0%	-5.2%	23.7%	4.2%	41.6%	13.5%	-7.8%	22.7%	16.9%	7.6%	3.1%	17.3%	
Jan 2018	8.8%	49.6%	-9.0%	114.8%	6.9%	16.2%	12.3%	-5.4%	25.1%	18.1%	11.3%	3.8%	12.6%	
Feb 2018	-6.9%	67.3%	7.5%	357.7%	20.7%	21.5%	11.9%	-9.7%	55.6%	28.6%	12.7%	2.0%	12.7%	
Mar 2018	-17.2%	41.1%	-1.5%	28.6%	-15.2%	24.8%	17.1%	30.4%	-3.4%	19.0%	9.2%	2.7%	3.9%	
Apr 2018	-1.9%	39.0%	6.7%	565.3%	5.1%	22.4%	-57.9%	69.9%	10.2%	22.7%	4.6%	-2.3%	11.0%	
May 2018	-11.1%	30.7%	22.4%	-22.9%	23.3%	34.4%	-7.6%	42.3%	-14.2%	20.7%	9.6%	-0.7%	6.5%	
Jun 2018	34.0%	18.6%	17.6%	31.9%	43.9%	-7.2%	33.5%	27.2%	7.0%	18.1%	13.6%	-1.6%	22.2%	
Jul 2018	-15.5%	25.1%	25.7%	28.7%	-2.0%	6.6%	50.8%	31.9%	-9.5%	22.1%	12.3%	5.6%	4.3%	
Aug 2018	22.2%	36.8%	17.1%	9.9%	36.8%	27.0%	13.5%	56.9%	10.2%	29.7%	10.1%	5.5%	22.4%	
Sep 2018	13.4%	18.4%	28.1%	386.8%	58.9%	23.9%	19.7%	48.7%	0.2%	27.3%	9.9%	8.9%	18.3%	
Oct 2018	1.3%	3.7%	23.8%	140.8%	22.6%	29.5%	19.8%	64.7%	-27.4%	20.4%	10.1%	13.8%	9.6%	
Nov 2018	-0.8%	9.7%	27.0%	73.9%	-19.8%	20.7%	18.4%	30.9%	-5.7%	17.8%	8.0%	7.5%	7.8%	
Dec 2018	-8.5%	-14.9%	19.4%	82.4%	-6.3%	18.0%	-1.0%	26.6%	-31.9%	4.8%	7.1%	6.5%	0.3%	
Jan 2019	3.6%	-6.6%	24.8%	54.2%	7.8%	22.5%	-13.3%	6.7%	-23.1%	7.3%	9.4%	5.9%	6.3%	
Feb 2019	16.3%	-10.3%	19.4%	52.1%	44.7%	22.1%	4.1%	13.8%	-1.1%	9.4%	7.3%	10.6%	11.2%	
Mar 2019	19.3%	-2.0%	-3.4%	222.4%	103.1%	16.7%	47.0%	4.3%	21.7%	14.4%	6.3%	9.6%	14.5%	
Apr 2019	3.5%	13.2%	29.6%	54.1%	78.3%	55.7%	185.5%	-16.3%	39.8%	26.6%	12.9%	13.6%	18.4%	
May 2019	9.8%	12.9%	16.5%	16.8%	69.8%	33.0%	37.6%	-2.4%	46.2%	23.3%	8.3%	11.3%	14.7%	
Jun 2019	-21.1%	14.6%	24.3%	133.0%	40.4%	27.2%	0.4%	12.0%	34.2%	29.7%	4.4%	6.7%	3.2%	
Jul 2019	-18.3%	14.1%	22.7%	37.3%	84.4%	31.6%	13.9%	-16.4%	40.8%	19.3%	5.6%	5.6%	3.6%	
Aug 2019	-51.0%	10.2%	10.1%	-4.3%	3.0%	20.5%	12.2%	-11.0%	19.6%	6.7%	5.8%	6.3%	-17.0%	

Source: NISR/ Index of Industrial Production

Table 3: Index of Industrial Production, formal activity, 2014=100, annual average

	Mining & quarrying	Manufacturing of:									Electricity	Water & waste management	General Index
		Food	Beverages & tobacco	Textiles, clothing & leather goods	Wood & paper; printing	Chemicals, rubber & plastic products	Non-metallic mineral products	Metal products, machinery & equipment	Furniture & other manufacturing	Manufacturing Total			
Jan 2016	95.4	120.3	107.1	87.4	103.7	118.9	125.7	145.2	117.2	116.4	109.3	99.2	106.2
Feb 2016	96.0	121.1	107.2	88.5	105.2	119.3	129.9	147.6	118.1	117.2	110.5	99.6	107.0
Mar 2016	97.1	122.7	107.4	96.7	105.5	120.7	136.0	150.6	117.0	118.5	112.2	100.5	108.3
Apr 2016	96.8	121.9	107.3	100.3	106.5	122.1	140.6	151.4	114.2	118.4	113.4	101.4	108.4
May 2016	97.8	123.3	107.7	98.0	105.7	123.0	148.8	153.2	115.8	119.6	114.0	102.2	109.4
Jun 2016	100.2	121.9	108.1	92.9	104.9	124.5	156.5	162.7	113.7	120.6	115.6	103.4	111.0
Jul 2016	102.9	121.3	108.7	94.6	122.4	125.0	161.2	162.9	112.0	121.4	116.4	104.8	112.6
Aug 2016	104.7	122.5	109.5	96.6	122.1	126.9	165.1	164.3	112.6	122.6	118.1	106.3	114.2
Sep 2016	105.3	123.6	108.6	92.9	122.9	129.5	161.0	163.5	112.4	122.7	119.3	107.5	114.6
Oct 2016	102.6	121.5	108.5	92.4	124.1	131.3	161.5	164.4	110.4	122.2	120.3	108.7	113.4
Nov 2016	104.4	121.6	107.6	99.0	124.6	132.3	165.1	166.4	109.1	122.5	121.3	109.4	114.4
Dec 2016	105.0	119.8	107.5	111.4	124.4	132.4	167.9	169.2	107.3	122.3	122.7	110.6	114.9
Jan 2017	106.1	119.4	108.6	115.3	127.9	136.7	171.3	171.6	107.9	123.5	123.0	111.5	115.9
Feb 2017	106.8	117.7	107.8	114.6	129.0	139.0	172.9	172.5	106.0	123.1	123.5	111.9	116.1
Mar 2017	106.7	116.7	107.9	114.1	132.4	139.5	173.9	170.7	107.3	123.0	124.2	110.7	116.1
Apr 2017	107.8	118.5	107.9	111.8	132.5	141.5	175.3	168.9	107.0	123.9	124.8	111.8	116.9
May 2017	108.9	119.0	106.3	165.6	133.5	145.1	176.1	169.8	108.1	124.8	125.4	112.2	117.9
Jun 2017	107.5	119.5	104.9	176.8	133.0	148.9	177.5	172.2	107.1	125.3	126.1	112.7	117.7
Jul 2017	108.7	120.2	103.2	189.3	117.3	153.4	178.2	174.4	110.9	125.3	127.4	113.0	118.3
Aug 2017	109.8	119.0	101.7	199.5	117.2	155.2	183.4	173.6	110.6	125.0	128.5	113.0	118.8
Sep 2017	115.5	118.4	101.0	201.1	116.2	153.9	188.8	172.2	111.3	124.7	129.7	113.2	121.2
Oct 2017	122.9	121.2	100.7	208.3	112.4	155.0	190.2	172.8	117.2	126.0	130.8	112.9	124.9
Nov 2017	126.5	124.5	100.5	218.8	117.3	157.5	193.1	169.6	120.9	127.6	131.7	113.3	127.2
Dec 2017	128.7	128.5	100.0	224.6	117.8	161.9	195.3	168.5	123.3	129.4	132.5	113.6	129.0
Jan 2018	129.4	132.9	99.2	237.6	118.6	164.0	197.2	167.8	125.6	131.3	133.6	114.0	130.2
Feb 2018	128.9	138.2	99.8	258.7	120.5	166.4	198.7	166.5	129.6	133.8	134.9	114.1	131.3
Mar 2018	127.5	142.1	99.6	262.8	118.7	169.5	201.2	170.2	129.3	135.8	135.9	114.4	131.7
Apr 2018	127.3	145.9	100.1	292.3	119.2	172.0	192.9	177.1	130.2	138.0	136.4	114.2	132.7
May 2018	126.3	149.3	101.9	278.1	121.3	176.8	191.7	182.9	128.6	140.2	137.5	114.1	133.3
Jun 2018	129.3	151.2	103.3	284.2	124.5	175.6	197.1	189.6	129.3	142.4	138.9	113.9	135.6
Jul 2018	127.3	153.9	105.7	289.5	124.3	176.6	204.7	194.6	128.1	144.9	140.3	114.5	136.1
Aug 2018	130.0	157.8	107.3	291.3	127.4	180.6	207.2	203.3	129.1	148.2	141.5	115.1	138.7
Sep 2018	132.0	159.8	109.4	313.9	131.9	183.4	210.9	209.7	129.1	151.1	142.6	115.9	140.9
Oct 2018	132.2	160.3	111.1	333.5	133.8	187.0	214.4	217.6	125.6	153.3	143.8	117.2	142.1
Nov 2018	132.1	161.5	112.9	348.8	131.0	190.1	217.7	221.4	124.9	155.3	144.7	117.9	143.1
Dec 2018	131.1	159.4	114.8	373.6	130.3	192.8	217.5	224.7	120.9	155.9	145.5	118.5	143.1
Jan 2019	131.5	158.5	116.9	386.7	131.3	196.1	215.2	225.6	118.2	156.8	146.6	119.1	143.8
Feb 2019	132.7	157.2	118.5	400.8	136.1	199.1	215.8	227.2	118.1	157.8	147.4	120.0	144.9
Mar 2019	134.0	156.9	118.2	442.0	146.2	201.7	223.8	227.9	120.1	159.6	148.1	120.9	146.3
Apr 2019	134.3	158.7	120.7	460.8	154.1	209.3	235.0	225.2	123.7	162.7	149.6	122.1	148.1
May 2019	135.0	160.5	122.2	468.8	161.6	215.5	240.5	224.7	128.0	165.8	150.6	123.2	149.7
Jun 2019	132.6	162.3	124.6	502.2	166.0	219.7	240.6	228.5	131.4	170.0	151.1	123.8	150.1
Jul 2019	130.7	164.2	127.2	511.2	173.9	224.8	243.7	225.1	136.1	172.6	151.9	124.4	150.5
Aug 2019	123.1	165.6	128.4	510.4	174.3	228.7	246.2	222.4	138.3	173.6	152.6	125.1	148.1

Source: NISR/ Index of Industrial Production

Notes

In 2017, Rwanda has subscribed to IMF Enhanced General Data Dissemination System (E-GDDS). The E-GDDS is considered as a transition to the Special Data Dissemination Standard (SDDS) which is a more advanced stage. The aim was to subscribe to SDDS by June 2019. The system aims to encourage member countries to improve data quality; and guide member countries in the dissemination to the public of comprehensive, timely, accessible, and reliable economic, financial, and socio-demographic statistics.

In this regards, NISR as responsible institution for the compilation and publication of official statistics in Rwanda has mandate to develop the Index of Industrial Production (IIP) one of the missing requirement to fully compliance with SDDS. IIP series were developed since 2017 and the first publication was done in June 2019. In this publication a series from January 2011 have been compiled and availed to the public.

The Index of Industrial Production (IIP) is a statistical instrument used to monitor the monthly trends in output of industrial activities. By the SDDS, the index for any reference month has to be released within six weeks from the end of that month. They are developed based on a range of short term (monthly) indicators of economic activity. These sources are still under development. These series should therefore be considered as experimental, and will be further developed in the coming period to improve their quality and consistency with the annual estimates.

The IIP in this statistical release relates to the activity of businesses in the formal sector in Rwanda, defined as those registered with the tax authorities. The IIP series is entirely consistent with the quarterly estimates of Gross Value Added published by NISR, which still provide the most comprehensive and detailed assessment of economic activity.

The scope of the IIP as recommended by the United Nations Statistical Office (UNSO) includes mining and quarrying, manufacturing, construction, electricity, gas and water production and supply. But due to constraints of data availability, the IIP compiled in Rwanda has excluded construction activities.

The IIP is produced based on monthly indicators of the volume of economic activity for eleven Rwanda Classification of Products by Activity (RCPA). These are weighted together based on the gross value added in the reference year for the series (currently, 2014), consistent with the estimates of published value added within the Gross Domestic Product series, see table 3. The correspondence table between RCPA and ISIC (International Standard Industrial Classification) Revision 4 is shown in Table 4.

Table 4: 2014 Gross Value Added

RCPA	Activity	Gross Value Added (RWF, billions)	Percentage of total GVA
B	Mining & quarrying	147.1	41.1%
CA	Manufacturing of food	47.3	13.2%
CB	Manufacturing of beverages & tobacco	53.7	15.0%
CC	Manufacturing of textiles, clothing & leather goods	2.9	0.8%
CD	Manufacturing of wood & paper; printing	5.7	1.6%
CE	Manufacturing of chemicals, rubber & plastic products	14.6	4.1%
CF	Manufacturing of non-metallic mineral products	8.4	2.3%
CG	Manufacturing of metal products, machinery & equipment	11.2	3.1%
CH	Furniture & other manufacturing	7.8	2.2%
D	Electricity	47.1	13.1%
E	Water & waste management	11.9	3.3%
	Total	357.9	100.0%

Source: NISR/Index of Industrial Production

Table 5: Matching table between Rwanda Products Classification by Activity (RCPA) and International Standard Industrial Classification Revision 4 (ISIC Rev 4)

RCPA (Rwanda Classification of Products by Activity)			ISIC Rev.4 (here R stands for Rwanda)		
Code	Level	Description	Code	Code1	Description
B	2	Mining and quarrying	R	RB	Mining and quarrying
CA	4	Manufacturing of food	RC	RC10	Manufacture of food products
CB	4	Manufacturing of beverages & tobacco	RC	RC11	Manufacture of beverages
			RC	RC12	Manufacture of tobacco products
CC	4	Manufacturing of textiles, clothing & leather goods	RC	RC13	Manufacture of textiles
			RC	RC14	Manufacture of wearing apparel
			RC	RC15	Manufacture of leather and related products
CD	4	Manufacturing of wood & paper; printing	RC	RC16	Manufacture of wood and of products of wood and cork, except furniture; Manufacture of articles of straw and plaiting materials
CD	4	Manufacturing of wood & paper; printing	RC	RC17	Manufacture of paper and paper products
			RC	RC18	Printing and reproduction of recorded media
CE	4	Manufacturing of chemicals, rubber & plastic products	RC	RC19	Manufacture of coke and refined petroleum products
			RC	RC20	Manufacture of chemicals and chemical products
			RC	RC21	Manufacture of pharmaceuticals, medicinal chemical and botanical products
			RC	RC22	Manufacture of rubber and plastics products
CF	4	Manufacturing of non-metallic mineral products	RC	RC23	Manufacture of other non-metallic mineral products
CG	4	Manufacturing of metal products, machinery & equipment	RC	RC24	Manufacture of basic metals
			RC	RC25	Manufacture of fabricated metal products, except machinery and equipment
			RC	RC26	Manufacture of computer, electronic and optical products
			RC	RC27	Manufacture of electrical equipment
			RC	RC28	Manufacture of machinery and equipment n.e.c.
			RC	RC29	Manufacture of motor vehicles, trailers and semi-trailers
			RC	RC30	Manufacture of other transport equipment
CH	4	Furniture & other manufacturing	RC	RC31	Manufacture of furniture
			RC	RC32	Other manufacturing
			RC	RC33	Repair and installation of machinery and equipment
D	2	Electricity	RD	RD35	Electricity, gas, steam and air conditioning supply
E	2	Water & waste management	RE	RE36	Water collection, treatment and supply

Source: NISR/ Index of Industrial Production

For more information, please contact:

Contacts:

NATIONAL INSTITUTE OF STATISTICS OF RWANDA (NISR),

P.O. BOX 6139 Kigali,

Tel.: (+250) 788383103

Web site: www.statistics.gov.rw;

E-mail: info@statistics.gov.rw;