



REPUBLIC OF RWANDA



# OCTOBER 2020 INDEX OF INDUSTRIAL PRODUCTION (IIP)

*This is the monthly Index of Industrial Production (IIP).  
Series has been developed by the National Institute of  
Statistics of Rwanda (NISR) to provide more timely  
estimates of the broad trends of industrial output.*

October 2020

Index of  
Industrial  
Production  
(IIP)

December 2020

NATIONAL INSTITUTE OF STATISTICS OF RWANDA

## Monthly Index of Industrial Production– Formal activity– October 2020

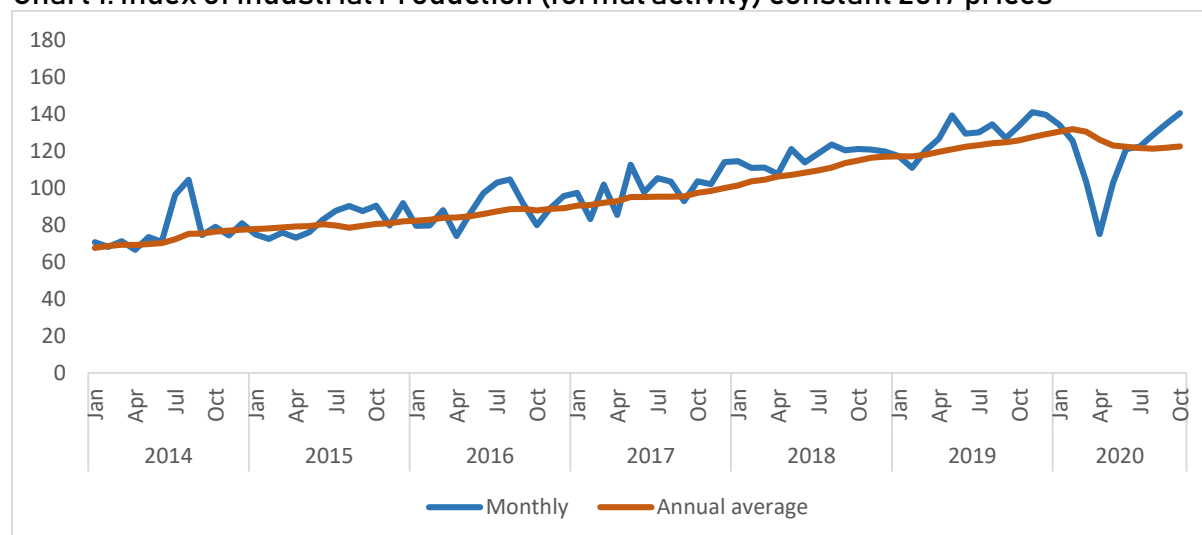
### 1. Summary

In October 2020, the Index of Industrial Production (IIP) shows that, industrial output (formal sector) increased by 5.0 percent compared to October 2019, against a decrease of 2.7 percent on annual average basis.

Activities performed as follows:

- Mining and quarrying decreased by 49.3 percent;
- Manufacturing increased by 20.1 percent;
- Electricity increased by 6.2 percent; and
- Water and waste management increased by 7.4 percent

Chart 1: Index of Industrial Production (formal activity) constant 2017 prices

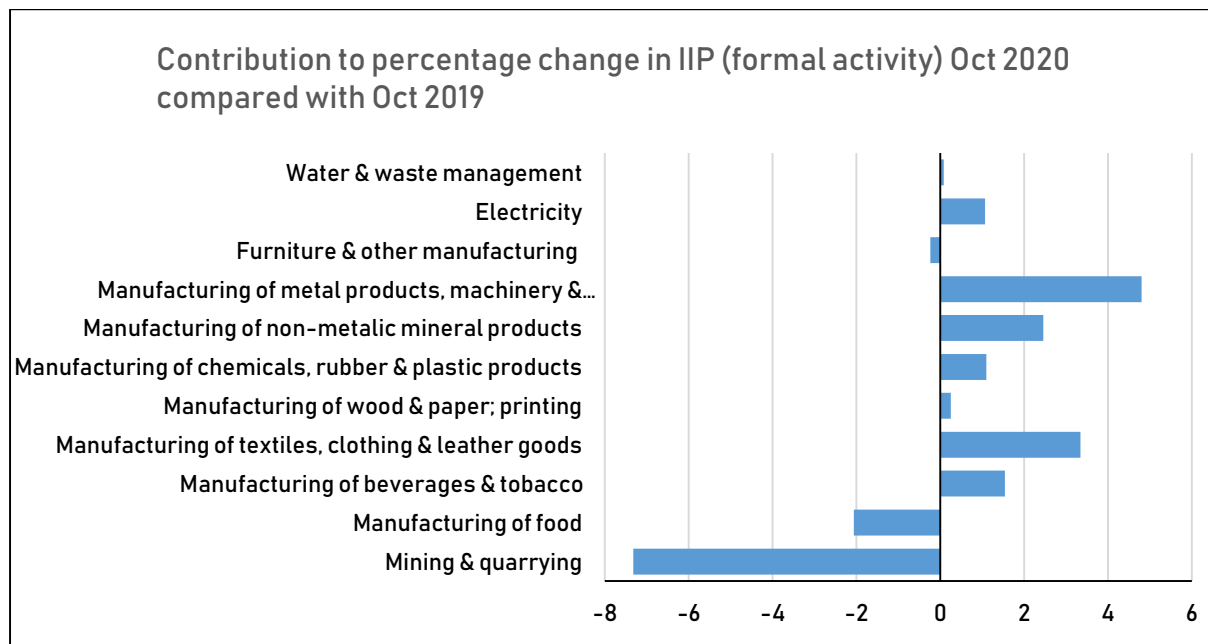


Source: NISR/Index of Industrial Production

### 2. Details

The increase in manufacturing is due mainly to an increase of 93.3 percent in manufacturing of metal products, machinery & equipment, 56.1 percent increase of manufacturing of non-metallic mineral products, 10.1 percent increase of manufacturing of beverages and tobacco and 36.8 percent increase of manufacturing of textiles, clothing & leather goods. However, the increase in total manufacturing is tempered by a decrease of 8.7 percent in manufacturing of food.

**Chart 2: Contribution to percentage change**



Source: NISR/ Index of Industrial Production

Table 1: Index of Industrial Production, formal activity, 2017=100, monthly

	Mining & quarrying	Manufacturing of:										Electricity	Water & waste management	General Index
		Food	Beverages & tobacco	Textiles, clothing & leather goods	Wood & paper; printing	Chemicals, rubber & plastic products	Non-metallic mineral products	Metal products, machinery & equipment	Furniture & other manufacturing	Manufacturing Total				
Jun 2017	80.8	86.4	107.1	101.7	79.2	119.2	106.1	143.2	95.4	105.8	97.0	105.1	97.7	
Jul 2017	119.0	95.1	105.8	129.4	95.0	112.1	93.1	99.3	128.8	100.2	102.7	107.2	105.4	
Aug 2017	109.0	95.5	104.3	117.0	80.6	107.2	112.2	109.8	96.6	101.9	105.4	105.5	103.5	
Sep 2017	88.1	103.5	81.6	34.4	96.1	85.0	115.6	98.8	88.0	94.5	101.7	99.9	92.9	
Oct 2017	120.4	119.7	80.4	51.9	109.2	94.6	99.5	97.3	129.6	100.6	105.8	96.5	103.7	
Nov 2017	99.4	118.5	76.2	77.3	139.1	120.8	113.4	98.7	88.9	103.1	101.6	99.2	102.0	
Dec 2017	88.4	135.9	105.8	155.8	98.2	113.6	109.1	107.7	129.2	120.9	104.4	103.7	114.0	
Jan 2018	84.9	136.8	95.3	184.8	162.6	120.0	100.7	101.9	121.5	122.5	105.4	103.7	114.5	
Feb 2018	80.7	140.8	93.0	228.3	106.3	89.0	79.3	98.9	125.7	118.3	99.4	91.1	110.9	
Mar 2018	68.5	143.3	102.3	154.7	88.2	111.9	91.9	104.2	100.4	122.9	109.4	99.4	111.0	
Apr 2018	68.8	143.6	92.2	219.1	91.8	102.6	29.8	109.0	112.3	113.6	100.5	93.4	107.6	
May 2018	80.0	144.9	104.7	245.7	125.5	136.0	80.5	134.7	103.2	128.2	112.1	100.8	121.2	
Jun 2018	60.3	123.3	109.4	166.1	134.9	112.3	123.4	183.9	107.0	133.4	110.2	103.4	113.8	
Jul 2018	54.4	131.7	123.3	187.4	109.7	112.1	141.7	152.4	120.6	134.0	115.3	113.2	118.8	
Aug 2018	59.3	142.3	126.0	181.9	120.5	130.3	140.8	154.3	118.3	141.1	116.0	111.3	123.5	
Sep 2018	67.2	129.6	110.1	281.4	121.3	107.5	159.5	129.1	101.2	129.2	111.8	108.8	120.4	
Oct 2018	60.8	135.2	107.2	258.6	150.6	123.4	144.8	125.0	107.1	133.2	116.5	109.8	121.2	
Nov 2018	63.2	151.3	99.6	215.5	134.2	145.3	138.9	109.6	108.9	134.7	109.8	106.6	120.7	
Dec 2018	70.8	141.2	115.8	207.1	127.7	126.5	123.3	112.2	96.6	133.9	111.7	110.5	119.8	
Jan 2019	70.4	129.2	118.6	200.3	123.9	145.8	99.9	111.1	96.6	128.9	115.2	109.9	117.4	
Feb 2019	63.1	119.3	108.4	190.7	140.5	119.5	96.4	114.2	148.7	122.0	106.6	100.8	110.8	
Mar 2019	53.9	128.8	102.0	256.8	162.6	134.1	166.1	132.5	110.5	132.5	116.3	108.8	120.2	
Apr 2019	82.0	134.3	127.4	198.7	180.0	174.3	113.5	124.5	125.2	134.0	114.1	104.9	126.6	
May 2019	103.0	125.9	143.6	277.8	205.7	195.1	122.4	163.3	128.8	146.1	121.6	110.0	139.3	
Jun 2019	52.2	109.5	145.4	244.9	173.7	153.0	154.1	254.1	141.8	160.2	115.4	109.5	129.4	
Jul 2019	65.2	113.5	150.1	252.5	155.6	159.0	148.3	150.4	159.4	141.3	122.4	118.4	130.1	
Aug 2019	81.4	131.2	141.8	295.2	137.1	160.4	125.2	153.8	127.3	148.1	123.1	117.9	134.6	
Sep 2019	98.2	115.1	118.9	277.3	127.9	141.4	140.1	163.7	120.7	139.6	119.9	106.2	127.1	
Oct 2019	121.7	132.0	119.4	270.7	138.3	146.5	115.5	152.3	138.9	143.7	121.4	110.4	133.8	
Nov 2019	179.7	136.5	111.0	297.6	102.0	165.0	135.1	136.3	123.3	142.2	116.6	105.6	141.0	
Dec 2019	131.9	119.7	144.7	374.5	134.0	160.6	102.0	132.5	132.7	142.8	120.5	105.2	139.8	
Jan 2020	141.9	116.6	131.0	256.4	128.7	161.2	131.9	139.0	137.9	138.8	118.9	111.9	134.3	
Feb 2020	125.3	98.3	123.3	302.5	117.6	159.5	125.0	131.6	97.7	125.7	116.2	101.6	125.5	
Mar 2020	64.0	100.8	96.0	165.5	65.3	148.4	90.3	128.6	86.8	112.7	118.2	108.0	103.5	
Apr 2020	33.2	84.0	78.2	100.1	74.4	104.1	57.1	35.3	14.8	75.7	98.2	100.8	75.0	
May 2020	28.1	111.0	103.3	117.1	65.9	100.6	153.7	142.7	142.7	124.7	114.7	107.2	102.8	
June 2020	70.2	133.8	120.8	123.8	137.7	138.7	128.1	161.1	154.1	146.9	115.6	114.4	121.2	
July 2020	53.3	124.7	143.1	123.8	67.7	132.6	176.6	182.9	140.6	152.7	115.6	114.4	121.2	
Aug 2020	41.7	101.2	145.8	271.2	143.6	186.4	154.5	218.8	134.9	153.0	126.1	125.6	128.8	
Sept 2020	49.8	123.1	134.3	194.0	207.3	164.6	232.7	245.9	141.3	169.6	123.1	119.2	134.9	
Oct 2020	46.3	120.5	131.5	370.2	151.5	172.5	180.2	294.4	129.7	172.6	129.0	118.6	140.5	

Source: NISR/ Index of Industrial Production

**Table 2: Index of Industrial Production, formal activity, 2017=100, percentage change on same month in previous year**

	Manufacturing of:										Electricity	Water & waste management	General Index
	Mining & quarrying	Food	Beverages & tobacco	Textiles, clothing & leather goods	Wood & paper; printing	Chemicals, rubber & plastic products	Non-metallic mineral products	Metal products, machinery & equipment	Furniture & other manufacturing	Manufacturing Total			
Jun 2017	-12.9%	29.4%	-12.2%	86.6%	-33.6%	61.2%	31.1%	16.1%	-12.4%	-7.1%	7.0%	5.6%	-5.8%
Jul 2017	23.4%	16.3%	-17.7%	133.4%	-65.1%	55.5%	8.5%	22.8%	45.8%	-7.4%	12.9%	2.6%	0.4%
Aug 2017	52.6%	26.4%	-21.8%	111.4%	12.7%	23.4%	53.5%	2.0%	-5.8%	-10.7%	9.6%	0.4%	-0.5%
Sep 2017	16.4%	-11.7%	-18.5%	-1.9%	-24.2%	-4.9%	40.4%	10.6%	-2.8%	-5.8%	12.1%	1.9%	-1.9%
Oct 2017	75.2%	13.0%	-11.5%	7.9%	60.1%	26.1%	-1.8%	22.2%	85.8%	11.3%	10.5%	-3.7%	17.1%
Nov 2017	71.3%	16.0%	-7.5%	64.3%	57.0%	39.4%	20.2%	-0.5%	17.5%	12.1%	8.4%	4.9%	18.3%
Dec 2017	28.9%	30.0%	-12.0%	66.9%	4.8%	62.4%	7.6%	26.6%	13.4%	20.2%	7.6%	3.1%	16.8%
Jan 2018	-10.9%	45.4%	-16.7%	90.9%	72.7%	36.4%	12.9%	7.1%	30.5%	25.9%	11.3%	3.8%	17.5%
Feb 2018	7.7%	75.8%	-6.4%	291.7%	42.3%	17.4%	-9.0%	11.4%	90.9%	37.9%	12.7%	2.0%	33.2%
Mar 2018	-39.8%	53.8%	-12.3%	31.9%	-8.6%	24.9%	4.8%	13.1%	4.5%	23.9%	9.2%	2.7%	8.9%
Apr 2018	-2.9%	67.4%	-9.6%	537.6%	21.1%	15.7%	-66.0%	58.4%	39.6%	31.6%	4.6%	-2.3%	26.0%
May 2018	-42.9%	57.1%	-1.5%	8.8%	-22.2%	28.9%	-19.0%	34.3%	-4.4%	22.7%	9.6%	-0.7%	7.6%
Jun 2018	-25.4%	42.7%	2.2%	63.4%	70.3%	-5.8%	16.3%	28.4%	12.1%	26.0%	13.6%	-1.6%	16.5%
Jul 2018	-54.3%	38.4%	16.6%	44.8%	15.5%	0.0%	52.3%	53.4%	-6.4%	33.8%	12.3%	5.6%	12.7%
Aug 2018	-45.6%	48.9%	20.8%	55.5%	49.5%	21.6%	25.5%	40.5%	22.6%	38.5%	10.1%	5.5%	19.3%
Sep 2018	-23.7%	25.3%	34.9%	718.1%	26.2%	26.5%	38.0%	30.6%	15.0%	36.7%	9.9%	8.9%	29.6%
Oct 2018	-49.5%	13.0%	33.2%	397.9%	37.9%	30.4%	45.6%	28.5%	-17.3%	32.4%	10.1%	13.8%	16.9%
Nov 2018	-36.4%	27.7%	30.6%	178.7%	-3.6%	20.4%	22.5%	11.1%	22.6%	30.6%	8.0%	7.4%	18.4%
Dec 2018	-19.9%	3.9%	9.5%	33.0%	30.0%	11.3%	13.0%	4.2%	-25.3%	10.7%	7.0%	6.5%	5.1%
Jan 2019	-17.1%	-5.6%	24.4%	8.4%	-23.8%	21.5%	-0.8%	9.0%	-20.5%	5.3%	9.3%	6.0%	2.5%
Feb 2019	-21.9%	15.3%	16.5%	-16.5%	32.2%	34.3%	21.6%	15.5%	18.3%	3.1%	7.3%	10.7%	-0.1%
Mar 2019	-21.3%	-10.1%	-0.3%	66.0%	84.5%	19.8%	80.7%	27.1%	10.1%	7.8%	6.3%	9.5%	8.3%
Apr 2019	19.2%	-6.5%	38.1%	-9.3%	96.1%	69.8%	281.3%	14.2%	11.5%	18.0%	13.5%	12.4%	17.7%
May 2019	28.8%	-13.1%	37.1%	13.1%	63.9%	43.4%	52.0%	21.3%	24.8%	14.0%	8.5%	9.1%	15.0%
Jun 2019	-13.4%	-11.2%	32.9%	47.4%	28.8%	36.3%	24.9%	38.2%	32.6%	20.1%	4.7%	5.9%	13.7%
Jul 2019	19.9%	13.8%	21.8%	34.7%	41.7%	41.9%	4.7%	-1.3%	32.2%	5.4%	6.1%	4.6%	9.6%
Aug 2019	37.4%	-7.8%	12.6%	62.3%	13.8%	23.0%	-11.1%	-0.3%	7.6%	5.0%	6.1%	5.9%	9.0%
Sep 2019	46.1%	-11.2%	7.9%	-1.4%	5.5%	31.5%	-12.1%	26.8%	19.3%	8.1%	7.3%	-2.4%	5.6%
Oct 2019	100.3%	-2.4%	11.4%	4.7%	-8.1%	18.8%	-20.3%	21.8%	29.7%	7.9%	4.3%	0.6%	10.4%
Nov 2019	184.2%	-9.8%	11.5%	38.1%	-24.0%	13.5%	-2.7%	24.3%	13.2%	5.6%	6.2%	-0.9%	16.8%
Dec 2019	86.2%	15.2%	24.9%	80.8%	5.0%	27.0%	-17.3%	18.1%	37.5%	6.7%	7.9%	-4.8%	16.7%
Jan 2020	101.5%	-9.7%	10.4%	28.0%	3.9%	10.6%	32.0%	25.1%	42.7%	7.7%	3.2%	1.8%	14.4%
Feb 2020	98.6%	17.5%	13.8%	58.6%	-16.3%	33.4%	29.7%	15.2%	-34.3%	3.1%	9.0%	0.8%	13.2%
Mar 2020	18.7%	21.7%	-5.9%	-35.6%	-59.8%	10.7%	-45.6%	-2.9%	-21.5%	-15.0%	1.7%	-0.8%	-13.9%
Apr 2020	-59.4%	37.4%	-38.6%	-49.6%	-58.7%	-40.3%	-49.7%	-71.7%	-88.2%	-43.5%	-13.9%	-3.9%	-40.7%
May 2020	-72.7%	-11.9%	-28.1%	-57.9%	-67.9%	-48.4%	25.6%	-12.6%	10.8%	-14.6%	-5.6%	-2.5%	-26.2
Jun 2020	34.5%	22.2%	16.9%	-49.4%	-20.8%	-9.4%	-16.9%	-36.6%	8.6%	-8.3%	0.2%	4.4%	-6.4%
Jul 2020	18.3%	9.8%	-4.7%	-58.3%	-56.5%	-16.6%	19.0%	21.5%	-11.8%	8.1%	1.6%	5.1%	-6.0%
Aug 2020	-48.9%	-22.9%	2.8%	-8.1%	4.7%	16.3%	23.4%	42.3%	6.0%	3.4%	2.4%	6.5%	-4.3%
Sept 2020	-49.3%	7.0%	13.0%	-30.0%	62.0%	16.4%	66.1%	50.2%	17.0%	21.5%	2.6%	12.3%	6.1%
Oct 2020	-62.0%	-8.7%	10.1%	36.8%	9.5%	17.7%	56.1%	93.3%	-6.7%	20.1%	6.2%	7.4%	5.0%

Source: NISR/ Index of Industrial Production

**Table 3: Index of Industrial Production, formal activity, 2017=100, annual average**

	Mining & quarrying	Manufacturing of:										Electricity	Water & waste management	General Index
		Food	Beverages & tobacco	Textiles, clothing & leather goods	Wood & paper; printing	Chemicals, rubber & plastic products	Non-metallic mineral products	Metal products, machinery & equipment	Furniture & other manufacturing	Manufacturing Total				
Jun 2017	84.6	100.4	108.5	80.7	108.6	87.2	91.3	94.2	90.0	98.7	95.2	99.2	96.2	
Jul 2017	86.4	98.9	106.6	86.9	93.8	90.6	91.9	95.7	93.3	98.0	96.2	99.5	96.2	
Aug 2017	89.6	96.0	104.1	92.0	94.6	92.2	95.1	95.9	92.9	97.0	97.0	99.5	96.2	
Sep 2017	90.6	94.9	102.6	92.0	92.0	91.9	97.9	96.7	92.6	96.5	97.9	99.7	96.1	
Oct 2017	94.9	96.0	101.7	92.3	95.4	93.5	97.8	98.2	97.6	97.4	98.7	99.4	97.3	
Nov 2017	98.3	97.4	101.2	94.8	99.6	96.4	99.4	98.1	98.7	98.3	99.4	99.7	98.6	
Dec 2017	100.0	100.0	100.0	100.0	100.0	100.0	100.0	100.0	100.0	100.0	100.0	100.0	100.0	
Jan 2018	99.1	103.6	98.4	107.3	105.7	102.7	101.0	100.6	102.4	102.1	100.9	100.3	101.4	
Feb 2018	99.6	108.6	97.9	121.5	108.3	103.8	100.3	101.4	107.4	104.8	101.8	100.5	103.7	
Mar 2018	95.8	112.8	96.7	124.6	107.6	105.6	100.7	102.4	107.7	106.8	102.6	100.7	104.5	
Apr 2018	95.7	117.6	95.9	140.0	109.0	106.8	95.8	105.8	110.4	109.1	103.0	100.5	106.3	
May 2018	90.7	122.0	95.7	141.7	106.0	109.3	94.3	108.6	110.0	111.0	103.8	100.4	107.0	
Jun 2018	89.0	125.1	95.9	147.0	110.6	108.8	95.7	112.0	110.9	113.3	104.9	100.3	108.4	
Jul 2018	83.6	128.1	97.4	151.9	111.9	108.8	99.8	116.4	110.2	116.1	105.9	100.8	109.5	
Aug 2018	79.4	132.0	99.2	157.3	115.2	110.7	102.1	120.1	112.1	119.4	106.8	101.3	111.2	
Sep 2018	77.7	134.2	101.6	177.9	117.3	112.6	105.8	122.7	113.2	122.3	107.7	102.0	113.5	
Oct 2018	72.7	135.5	103.8	195.1	120.7	115.0	109.6	125.0	111.3	125.0	108.5	103.1	114.9	
Nov 2018	69.7	138.2	105.7	206.6	120.3	117.0	111.7	125.9	113.0	127.7	109.2	103.8	116.5	
Dec 2018	68.2	138.7	106.6	210.9	122.8	118.1	112.9	126.3	110.2	128.7	109.8	104.3	117.0	
Jan 2019	67.0	138.0	108.5	212.2	119.5	120.2	112.8	127.0	108.2	129.3	110.7	104.8	117.2	
Feb 2019	65.6	136.2	109.8	209.0	122.4	122.8	114.2	128.3	110.1	129.6	111.3	105.6	117.2	
Mar 2019	64.3	135.0	109.8	217.5	128.6	124.6	120.4	130.7	110.9	130.4	111.8	106.4	118.0	
Apr 2019	65.4	134.2	112.7	215.8	135.9	130.6	127.4	132.0	112.0	132.1	113.0	107.4	119.5	
May 2019	67.4	132.7	115.9	218.5	142.6	135.5	130.9	134.3	114.1	133.6	113.8	108.2	121.1	
Jun 2019	66.7	131.5	118.9	225.1	145.9	138.9	133.5	140.2	117.0	135.8	114.2	108.7	122.4	
Jul 2019	67.6	130.0	121.2	230.5	149.7	142.8	134.0	140.0	120.3	136.4	114.8	109.1	123.3	
Aug 2019	69.4	129.1	122.5	239.9	151.1	145.3	132.7	140.0	121.0	137.0	115.4	109.7	124.2	
Sep 2019	72.0	127.9	123.2	239.6	151.6	148.1	131.1	142.9	122.6	137.9	116.1	109.4	124.8	
Oct 2019	77.1	127.6	124.3	240.6	150.6	150.1	128.6	145.2	125.3	138.7	116.5	109.5	125.8	
Nov 2019	86.8	126.4	125.2	247.5	147.9	151.7	128.3	147.4	126.5	139.4	117.0	109.4	127.5	
Dec 2019	91.9	124.6	127.6	261.4	148.4	154.6	126.6	149.1	129.5	140.1	117.8	109.0	129.2	
Jan 2020	97.8	123.5	128.7	266.1	148.8	155.8	129.2	151.4	132.9	140.9	118.1	109.1	130.6	
Feb 2020	103.0	121.8	129.9	275.4	146.9	159.2	131.6	152.8	128.7	141.2	118.9	109.2	131.8	
Mar 2020	103.9	119.5	129.4	267.8	138.8	160.4	125.3	152.5	126.7	139.6	119.0	109.1	130.4	
Apr 2020	99.8	115.3	125.3	259.6	130.0	154.5	120.6	145.1	117.5	134.7	117.7	108.8	126.1	
May 2020	93.6	114.0	121.9	246.2	118.4	146.6	123.2	143.4	118.7	133.0	117.1	108.6	123.1	
Jun 2020	95.1	116.0	119.9	236.1	115.4	145.4	121.0	135.6	119.7	131.8	117.2	109.0	122.4	
July 2020	94.1	117.0	119.3	223.8	108.0	143.2	123.4	138.3	118.1	132.8	117.3	109.5	121.7	
Aug 2020	90.8	114.5	119.6	221.8	108.6	145.4	125.8	143.7	118.7	132.2	117.6	110.1	121.3	
Sept 2020	86.7	115.1	120.9	214.9	115.2	147.4	133.6	150.6	120.5	135.7	117.8	111.2	121.9	
Oct 2020	80.4	114.2	121.9	223.2	116.3	149.5	138.9	162.4	119.7	138.1	118.5	111.9	122.5	

Source: NISR/ Index of Industrial Production

Table 4: Linking factors between old base and new base (linking year = 2017)

	Mining & quarrying	Manufacturing of:									Electricity	Water & waste management	General Index
		Food	Beverages & tobacco	Textiles, clothing & leather goods	Wood & paper; printing	Chemicals, rubber & plastic products	Non-metallic mineral products	Metal products, machinery & equipment	Furniture & other manufacturing	Manufacturing Total			
Linking factors	1.29	1.28	1.00	2.25	1.18	1.62	1.95	1.69	1.23	1.29	1.32	1.14	1.29

Source: NISR/Index of Industrial Production

**Note:**

- The series from 2017 are based on the new weights.
- For the years before 2017, the growth rates of old series are preserved by dividing the old series by the above linking factors.

## Notes

In 2017, Rwanda has subscribed to IMF Enhanced General Data Dissemination System (E-GDDS). The E-GDDS is considered as a transition to the Special Data Dissemination Standard (SDDS) which is a more advanced stage. The aim was to subscribe to SDDS by June 2019. The system aims to encourage member countries to improve data quality; and guide member countries in the dissemination to the public of comprehensive, timely, accessible, and reliable economic, financial, and socio-demographic statistics.

In this regards, NISR as responsible institution for the compilation and publication of official statistics in Rwanda has mandate to develop the Index of Industrial Production (IIP) one of the missing requirement to fully compliance with SDDS. IIP series were developed since 2017 and the first publication was done in June 2019. In this publication a series from January 2011 have been compiled and availed to the public. Moreover, figures in this publication are the results of the 2017 rebasing exercise explained below in this note.

The Index of Industrial Production (IIP) is a statistical instrument used to monitor the monthly trends in output of industrial activities. By the SDDS, the index for any reference month has to be released within six weeks from the end of that month. They are developed based on a range of short term (monthly) indicators of economic activity.

The IIP in this statistical release relates to the activity of businesses in the formal sector in Rwanda, defined as those registered with the tax authorities. The IIP series is entirely consistent with the quarterly estimates of Gross Value Added published by NISR, which still provide the most comprehensive and detailed assessment of economic activity.

The scope of the IIP as recommended by the United Nations Statistical Office (UNSO) includes mining and quarrying, manufacturing, construction, electricity, gas and water production and supply. But due to constraints of data availability, the IIP compiled in Rwanda has excluded construction activities.

### 2017 Rebasing

The National Institute of Statistics of Rwanda finalised new series that are based on the 2017 weights replacing old series based on 2014 weights. The International best practice recommends doing it at least once in five years but in Rwanda it is compiled every three years due to the availability of information collected at a higher frequency. Note that the series from 2017 are based on the 2017 weights. For the years before 2017, the growth rates of old series are preserved by dividing the published indices by the linking factors found in the above table 4.

The IIP is produced based on monthly indicators of the volume of economic activity for eleven Rwanda Classification of Products by Activity (RCPA). These are weighted together based on the gross value added in the reference year for the series (currently,



2017), consistent with the estimates of published value added within the Gross Domestic Product series, see table 5.

The correspondence table between RCPA and ISIC (International Standard Industrial Classification) Revision 4 is shown in Table 6.

Table 5: 2017 Gross Value Added

RCPA	Activity	Gross Value Added (RWF, billions)	Percentage of total GVA
B	Mining & quarrying	57.4	13.0%
CA	Manufacturing of food	105.8	23.9%
CB	Manufacturing of beverages & tobacco	75.3	17.0%
CC	Manufacturing of textiles, clothing & leather goods	19.9	4.5%
CD	Manufacturing of wood & paper; printing	11.5	2.6%
CE	Manufacturing of chemicals, rubber & plastic products	25.0	5.7%
CF	Manufacturing of non-metallic mineral products	22.4	5.1%
CG	Manufacturing of metal products, machinery & equipment	20.0	4.5%
CH	Furniture & other manufacturing	15.0	3.4%
D	Electricity	83.6	18.9%
E	Water & waste management	6.2	1.4%
	<b>Total</b>	<b>442.1</b>	<b>100.0%</b>

Source: NISR/ Index of Industrial Production

Table 6: Matching table between Rwanda Products Classification by Activity (RCPA) and International Standard Industrial Classification Revision 4 (ISIC Rev 4)

RCPA (Rwanda Classification of Products by Activity)			ISIC Rev.4 (here R stands for Rwanda)		
Code	Level	Description	Code	Code1	Description
B	2	Mining and quarrying	R	RB	Mining and quarrying
CA	4	Manufacturing of food	RC	RC10	Manufacture of food products
CB	4	Manufacturing of beverages & tobacco	RC	RC11	Manufacture of beverages
			RC	RC12	Manufacture of tobacco products
CC	4	Manufacturing of textiles, clothing & leather goods	RC	RC13	Manufacture of textiles
			RC	RC14	Manufacture of wearing apparel
			RC	RC15	Manufacture of leather and related products
CD	4	Manufacturing of wood & paper; printing	RC	RC16	Manufacture of wood and of products of wood and cork, except furniture; Manufacture of articles of straw and plaiting materials
CD	4	Manufacturing of wood & paper; printing	RC	RC17	Manufacture of paper and paper products
			RC	RC18	Printing and reproduction of recorded media
CE	4	Manufacturing of chemicals, rubber & plastic products	RC	RC19	Manufacture of coke and refined petroleum products
			RC	RC20	Manufacture of chemicals and chemical products
			RC	RC21	Manufacture of pharmaceuticals, medicinal chemical and botanical products
			RC	RC22	Manufacture of rubber and plastics products
CF	4	Manufacturing of non-metallic mineral products	RC	RC23	Manufacture of other non-metallic mineral products
CG	4	Manufacturing of metal products, machinery & equipment	RC	RC24	Manufacture of basic metals
			RC	RC25	Manufacture of fabricated metal products, except machinery and equipment
			RC	RC26	Manufacture of computer, electronic and optical products
			RC	RC27	Manufacture of electrical equipment
			RC	RC28	Manufacture of machinery and equipment n.e.c.
			RC	RC29	Manufacture of motor vehicles, trailers and semi-trailers
			RC	RC30	Manufacture of other transport equipment
CH	4	Furniture & other manufacturing	RC	RC31	Manufacture of furniture
			RC	RC32	Other manufacturing
			RC	RC33	Repair and installation of machinery and equipment
D	2	Electricity	RD	RD35	Electricity, gas, steam and air conditioning supply
E	2	Water & waste management	RE	RE36	Water collection, treatment and supply

Source: NISR/ Index of Industrial Production

For more information, please contact:

Contacts:

NATIONAL INSTITUTE OF STATISTICS OF RWANDA (NISR),

P.O. BOX 6139 Kigali,

Tel.: (+250) 788383103

Web site: [www.statistics.gov.rw](http://www.statistics.gov.rw);

E-mail: [info@statistics.gov.rw](mailto:info@statistics.gov.rw);