



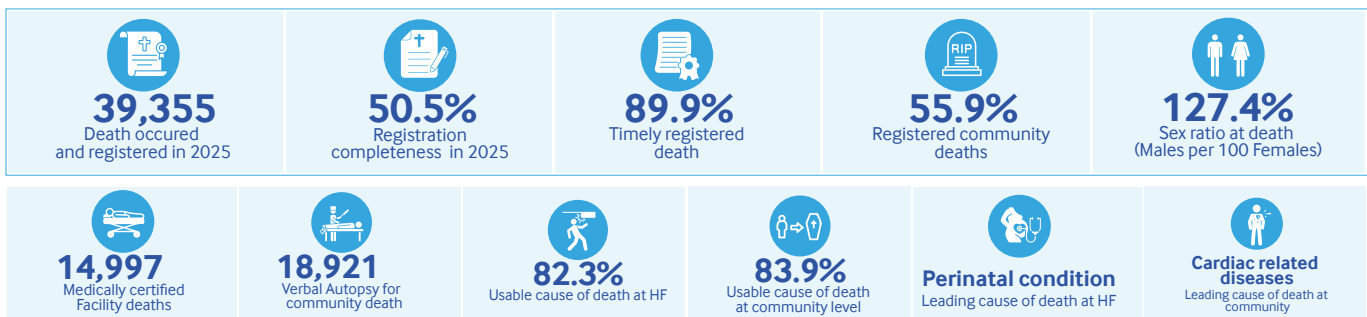
DEATH & CAUSE OF DEATH STATISTICS Factsheet 2025

National Institute of Statistics of Rwanda (NISR) | Civil Registration and Vital Statistics (CRVS) | Reference Year: 2025 | www.statistics.gov.rw | Published: 2026

About this factsheet

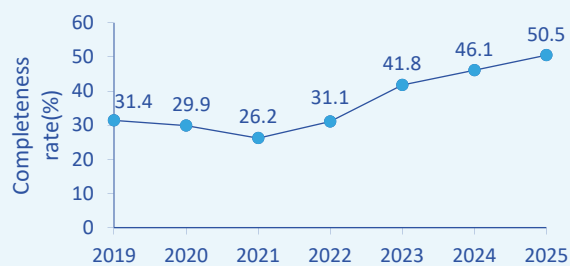
Rwanda's Civil Registration and Vital Statistics (CRVS) system captures information for death and cause of death from both community and health facility across the country. This factsheet summarizes death and Cause of death data compiled in 2025. It covers also total numbers of deaths registered, timeliness and completeness, place of occurrence, Age and sex distribution, leading cause of death and distribution by 3 main broad group.

Key figures at a glance

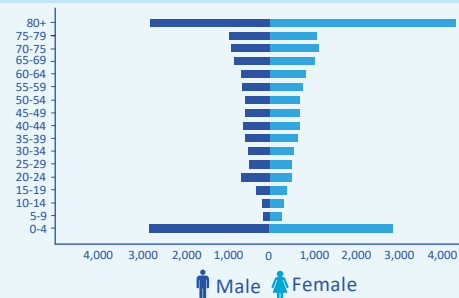


Death statistics

Trend of death registration completeness rate 2019 - 2025



Age-sex structure of registered deaths 2025



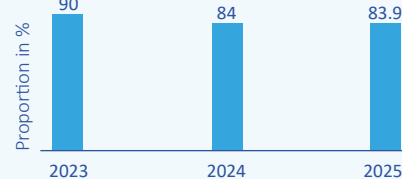
Cause of death statistics

Trends of usable cause of death in health facilities and community (in %)

Health Facility cause of death



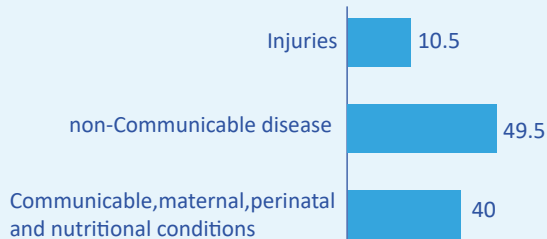
Community cause of death



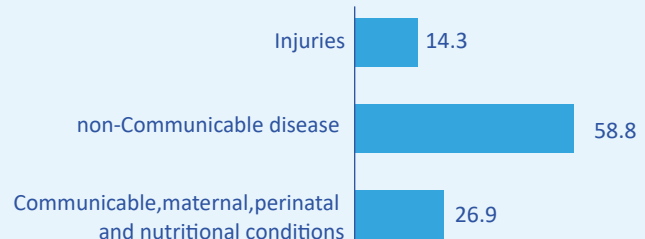
Distribution of usable death causes

Distribution of usable death cause at health facilities & community by three main broad groups

Health Facility

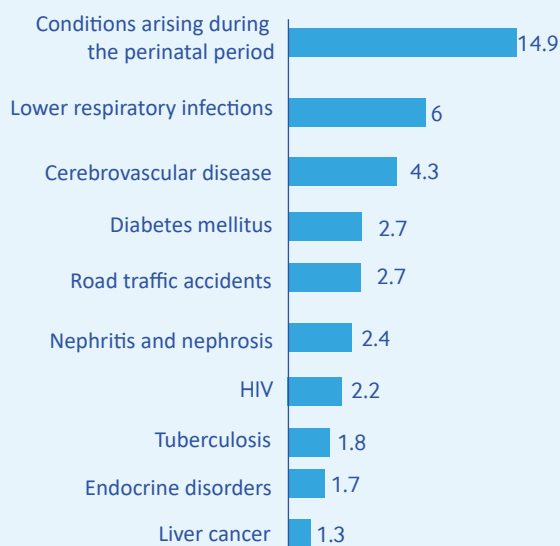


Community

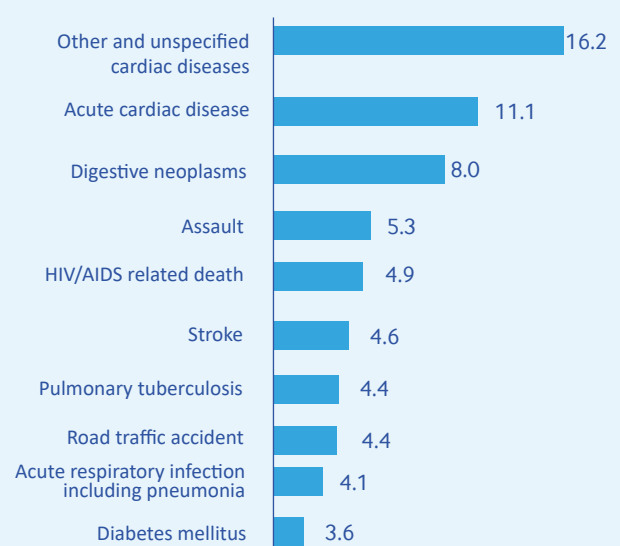


Top 10 leading cause of death at health facilities & community level

Health Facility



Community



Summary of key findings

- A total number of 39,355 deaths that occurred in 2025 were registered in CRVS system.
- Death registration completeness increased by 4.4 percentage points, from 46.1% in 2024 to 50.5% in 2025.
- Roughly 55.9% of registered deaths occurred in the community.
- The sex ratio of registered deaths in 2025 stood at 127.4 males per 100 females.
- A total of 14,997 deaths were medically certified at hospitals.
- A total of 18,921 Verbal Autopsy interviews were conducted out of 22,034 community deaths registered in 2025.
- The proportion of usable cause of death increased by 16.9 percentage points, from 65.4% in 2024 to 82.3% in 2025, for deaths medically certified deaths by health facilities.
- At community level, the proportion of usable cause of death remained almost constant in 2025 compared to 2024 (~84%).
- Non-communicable diseases accounted for 49.5% of deaths in health facilities, and with 58.8% of community deaths .